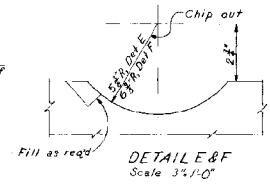
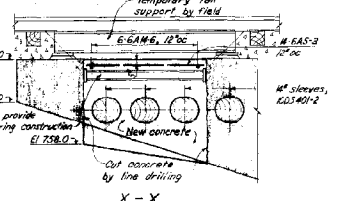
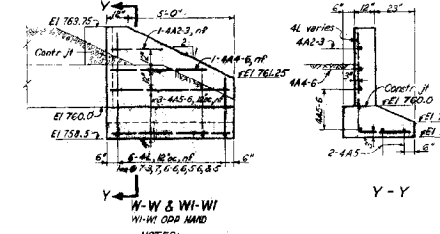
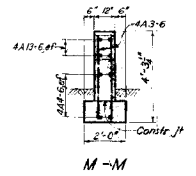
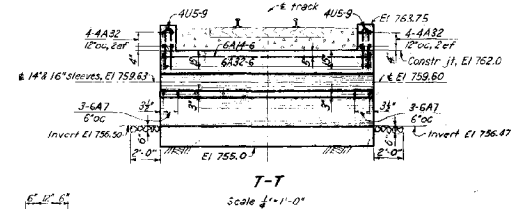
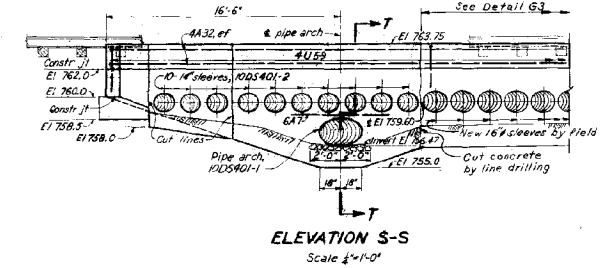
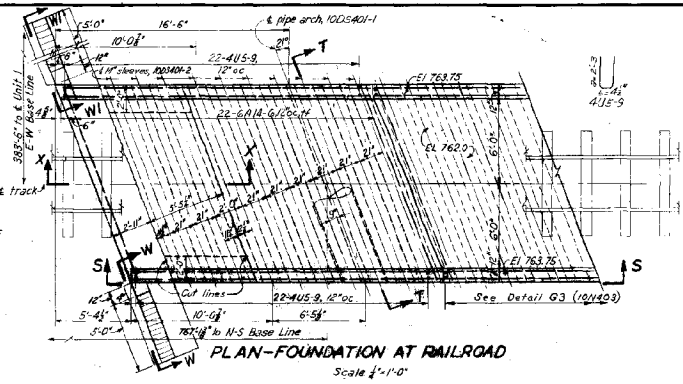
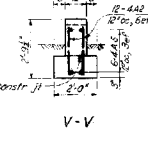
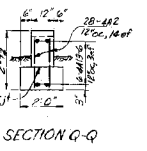
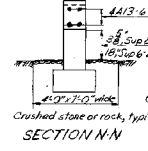
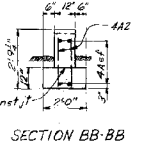
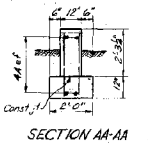


SUPPORT NO.	EL. A	EL. B	EL. C
2	761.00	759.20	756.50
3	760.88	759.19	756.48
4	760.86	759.06	756.36
5	760.80	759.00	756.30
6	760.73	757.72	756.23
7	760.66	757.66	756.16
8	760.60	757.60	756.10
9	760.53	757.53	756.03
10	760.46	757.46	755.96
11	760.40	757.40	755.90
12	760.33	757.33	755.83
13	760.26	757.26	755.76
14	760.20	757.20	755.70
15	760.12	757.13	755.63
16	760.06	757.06	755.56
17	760.00	757.00	755.50
18	759.96	756.96	755.46
19	759.90	756.90	755.40
20	759.84	756.84	755.34
21	759.78	756.78	755.28
22	759.71	756.71	755.21
23	759.65	756.65	755.15
24	759.59	756.59	755.09
25	759.52	756.52	755.02

For location of supports see Plan.
For details of supports see Section L-L



1	1/2" x 1/2" x 1/2" x 1/2"	1/2" x 1/2" x 1/2" x 1/2"
2	1/2" x 1/2" x 1/2" x 1/2"	1/2" x 1/2" x 1/2" x 1/2"
3	1/2" x 1/2" x 1/2" x 1/2"	1/2" x 1/2" x 1/2" x 1/2"
4	1/2" x 1/2" x 1/2" x 1/2"	1/2" x 1/2" x 1/2" x 1/2"
5	1/2" x 1/2" x 1/2" x 1/2"	1/2" x 1/2" x 1/2" x 1/2"
6	1/2" x 1/2" x 1/2" x 1/2"	1/2" x 1/2" x 1/2" x 1/2"
7	1/2" x 1/2" x 1/2" x 1/2"	1/2" x 1/2" x 1/2" x 1/2"
8	1/2" x 1/2" x 1/2" x 1/2"	1/2" x 1/2" x 1/2" x 1/2"
9	1/2" x 1/2" x 1/2" x 1/2"	1/2" x 1/2" x 1/2" x 1/2"
10	1/2" x 1/2" x 1/2" x 1/2"	1/2" x 1/2" x 1/2" x 1/2"
11	1/2" x 1/2" x 1/2" x 1/2"	1/2" x 1/2" x 1/2" x 1/2"
12	1/2" x 1/2" x 1/2" x 1/2"	1/2" x 1/2" x 1/2" x 1/2"
13	1/2" x 1/2" x 1/2" x 1/2"	1/2" x 1/2" x 1/2" x 1/2"
14	1/2" x 1/2" x 1/2" x 1/2"	1/2" x 1/2" x 1/2" x 1/2"
15	1/2" x 1/2" x 1/2" x 1/2"	1/2" x 1/2" x 1/2" x 1/2"
16	1/2" x 1/2" x 1/2" x 1/2"	1/2" x 1/2" x 1/2" x 1/2"
17	1/2" x 1/2" x 1/2" x 1/2"	1/2" x 1/2" x 1/2" x 1/2"
18	1/2" x 1/2" x 1/2" x 1/2"	1/2" x 1/2" x 1/2" x 1/2"
19	1/2" x 1/2" x 1/2" x 1/2"	1/2" x 1/2" x 1/2" x 1/2"
20	1/2" x 1/2" x 1/2" x 1/2"	1/2" x 1/2" x 1/2" x 1/2"
21	1/2" x 1/2" x 1/2" x 1/2"	1/2" x 1/2" x 1/2" x 1/2"
22	1/2" x 1/2" x 1/2" x 1/2"	1/2" x 1/2" x 1/2" x 1/2"
23	1/2" x 1/2" x 1/2" x 1/2"	1/2" x 1/2" x 1/2" x 1/2"
24	1/2" x 1/2" x 1/2" x 1/2"	1/2" x 1/2" x 1/2" x 1/2"
25	1/2" x 1/2" x 1/2" x 1/2"	1/2" x 1/2" x 1/2" x 1/2"
26	1/2" x 1/2" x 1/2" x 1/2"	1/2" x 1/2" x 1/2" x 1/2"
27	1/2" x 1/2" x 1/2" x 1/2"	1/2" x 1/2" x 1/2" x 1/2"
28	1/2" x 1/2" x 1/2" x 1/2"	1/2" x 1/2" x 1/2" x 1/2"
29	1/2" x 1/2" x 1/2" x 1/2"	1/2" x 1/2" x 1/2" x 1/2"
30	1/2" x 1/2" x 1/2" x 1/2"	1/2" x 1/2" x 1/2" x 1/2"
31	1/2" x 1/2" x 1/2" x 1/2"	1/2" x 1/2" x 1/2" x 1/2"
32	1/2" x 1/2" x 1/2" x 1/2"	1/2" x 1/2" x 1/2" x 1/2"
33	1/2" x 1/2" x 1/2" x 1/2"	1/2" x 1/2" x 1/2" x 1/2"
34	1/2" x 1/2" x 1/2" x 1/2"	1/2" x 1/2" x 1/2" x 1/2"
35	1/2" x 1/2" x 1/2" x 1/2"	1/2" x 1/2" x 1/2" x 1/2"
36	1/2" x 1/2" x 1/2" x 1/2"	1/2" x 1/2" x 1/2" x 1/2"



YARD UNITS I-9

CONCRETE
ASH SLUICE PIPE TRENCH & SUPPORTS
OUTLINE & REINF-SH 2

KINGSTON STEAM PLANT
TENNESSEE VALLEY AUTHORITY
DIVISION OF DESIGN

SUBMITTED	RECOMMENDED	APPROVED
<i>A. J. Ginn</i>	<i>A. J. Ginn</i>	<i>A. J. Ginn</i>
KNOXVILLE	4-17-53	36 C 4 ION 402 R4

RECORD DRAWING AS CONSTRUCTED
1-5-56