

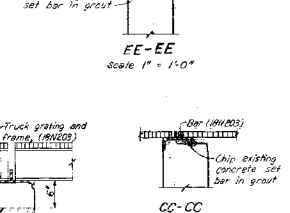
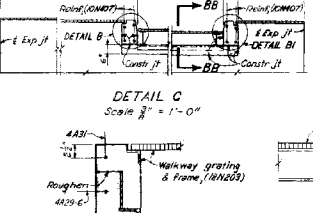
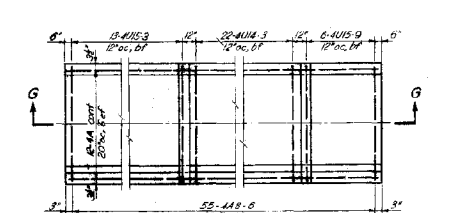
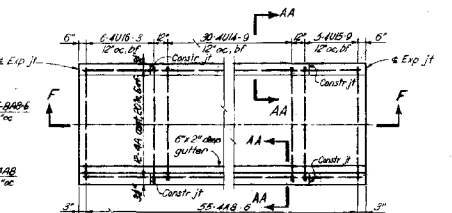
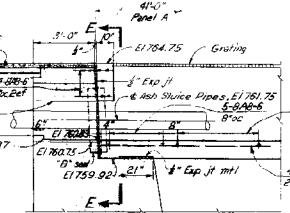
**PLAN - PANELS A, B, C, E, F, G & H**  
Scale 1/2" = 1'-0"

**PLAN - PANEL D**  
Scale 1/2" = 1'-0"

**PLAN - PANEL J**  
Scale 1/2" = 1'-0"

**DETAIL C**  
Scale 1/2" = 1'-0"

**EE-EE**  
Scale 1" = 1'-0"



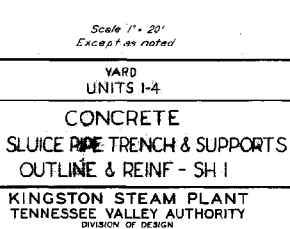
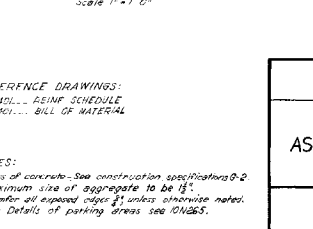
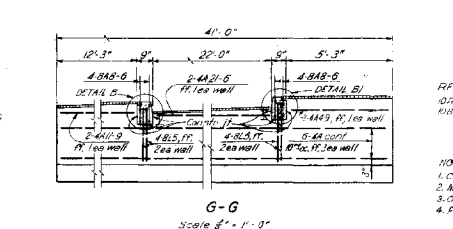
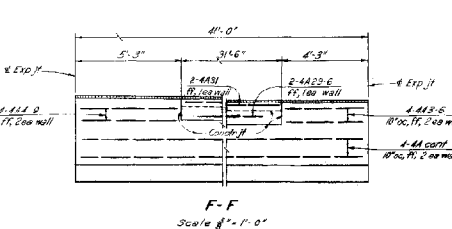
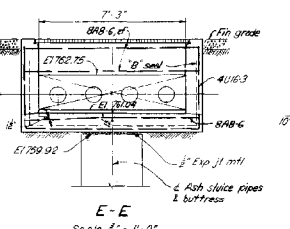
**DETAIL A**  
Scale 1/2" = 1'-0"

**PLAN - PANEL D**  
Scale 1/2" = 1'-0"

**PLAN - PANEL J**  
Scale 1/2" = 1'-0"

**DETAIL C**  
Scale 1/2" = 1'-0"

**CC-CC**  
Scale 1" = 1'-0"



**E-E**  
Scale 1/2" = 1'-0"

**F-F**  
Scale 1/2" = 1'-0"

**G-G**  
Scale 1/2" = 1'-0"

**AA-AA**  
Scale 1" = 1'-0"

**BB-BB**  
Scale 1" = 1'-0"

FIELD SUBSTITUTED NO.5 BARS FOR NO.4 BARS, DIRECT SUBSTITUTION

**REFERENCE DRAWINGS:**  
ION401 - REIN SCHEDULE  
ION401 - BILL OF MATERIALS

**NOTES:**  
1. Class of concrete - See construction specifications 0-2  
2. Maximum size of aggregate to be 1 1/2"  
3. Chamfer all exposed edges 1/4" unless otherwise noted.  
4. For Details of parking areas see ION405.

COMPANION DRAWINGS: ION402, ION410

<b>YARD UNITS I-4</b>			
<b>CONCRETE</b>			
<b>ASH SLUICE TRENCH &amp; SUPPORTS</b>			
<b>OUTLINE &amp; REIN - SH 1</b>			
<b>KINGSTON STEAM PLANT</b>			
<b>TENNESSEE VALLEY AUTHORITY</b>			
<b>DIVISION OF DESIGN</b>			
SUBMITTED	RECOMMENDED	APPROVED	
<i>G. Grinn</i>	<i>G.A. Moore</i>	<i>A.G. Moore</i>	
KNOXVILLE	4-17-53	36 c 4	ION401 R5
RECORD DRAWING AS CONSTRUCTED			
7-5-56			