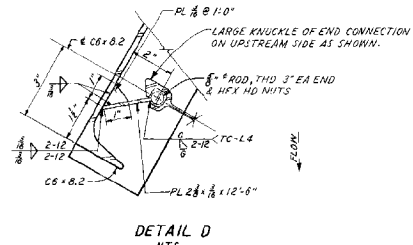
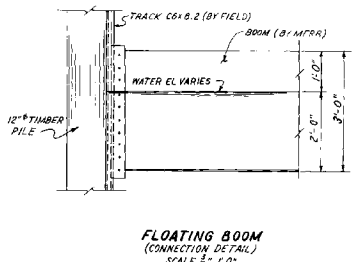
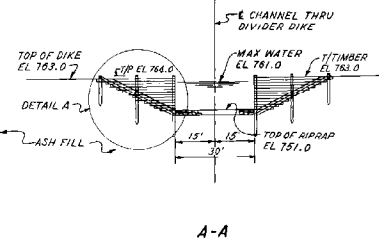


BILL OF FIELD MATERIALS REQUIRED

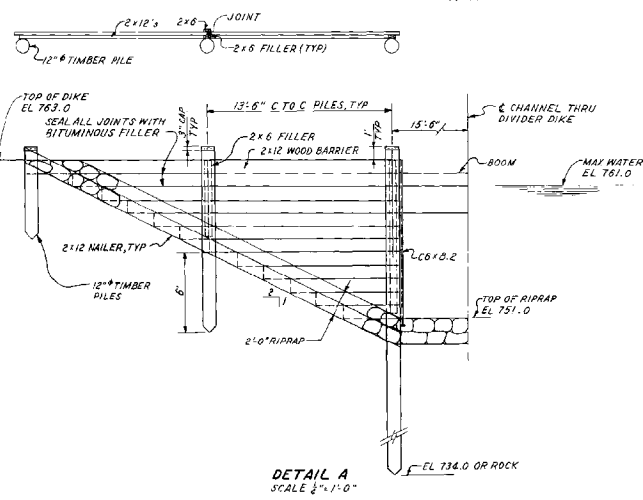
ITEM	SIZE	NO	LENGTH	QUANTITY
TIMBER (NAILER)	2x12 ROUGH	4	16'-0"	64 LF
BARRIER	2x12 ROUGH	34	14'-0"	476 LF
FILLER	2x6 ROUGH	4	12'-0"	48 LF
FILING (CLASS B CRESSOTED)	12"	2	30'-0"	60 LF
	12"	2	14'-0"	28 LF
	12"	2	8'-0"	16 LF
HARDWARE				
BOLTS - CHANNEL TO PILE	3/4" X 6 HEX NUT	6	1'-3"	6 LBS
OEE WASHERS	FOR 3/4" BOLTS	6		3 LBS
NAILS	20 D COMMON			4 LBS
ROOFING NAILS			0-11"	2 LBS
STEEL				
C6x8.2		2	12'-5"	205 LBS
PL	3/4" X 10'-7"	4		12 LBS
PL	2 1/2" X 12'-6"	4		481 LBS
GALV SHEET STEEL	20 GAUGE			31 LBS
3/4" ROD		2	13'-0"	27 LBS
PL 1/2"				1 LB



FLOATING BOOM

ITEM	NO	LENGTH	QUANTITY
BOOM	1	35'-0"	36 LF

- NOTES:
1. MATERIALS: ALL MATERIALS TO BE FURNISHED AND FABRICATED BY TVA FIELD EXCEPT FLOATING BOOM, TO BE PROVIDED UNDER REQUISITION 023167.
 2. BOLTS TO BE ASTM A307.
 3. ALL METAL PARTS FURNISHED BY TVA TO BE ASTM A36 AND GALVANIZED.
 4. TIMBER TO BE ROUGH SAWN PINE TREATED WITH COAL-TAR CRESSOTE @ 12% PCF OR AN EQUAL PRESERVATIVE. SEE SECTION 450 OF THE HIGHWAY SPECS NO. T-1 FOR CLASS B DOLINS.
 5. FOR FIELD WELDING SEE TVA SPEC 629C.



NO.	CON. NO.	DATE	SCALE	EXCEPT AS NOTED
DESIGN: PAUL REED	INSP: H.C. HOOD			
DRAWN: PAUL REED	ENGINEER: H.C. HOOD			
CHECKED: PAUL REED				
APPROVED: H.C. HOOD				
SCALE: 1" = 20'				
MAIN PLANT				
ASH DISPOSAL AREA DIVIDER DIKE & FLOATING BOOM				
KINGSTON STEAM PLANT TENNESSEE VALLEY AUTHORITY DIVISION OF ENGINEERING DESIGN				
SUBMITTED: R.A. DORRICK	RECOMMENDED: H.C. HOOD	APPROVED: H.C. HOOD		
INSPECTED AND APPROVED FOR ISSUE: H.C. HOOD				
KNOXVILLE 7/23/77 36 C ION424 RO				
RECORD DRAWING AS CONSTRUCTED				

FIRST ISSUE FOR PA 3076

PRINT	IN	ES			
SIZE	11	11	11	11	11