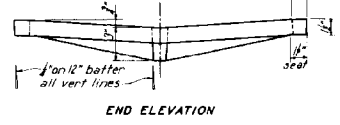
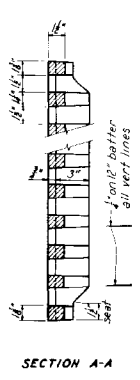
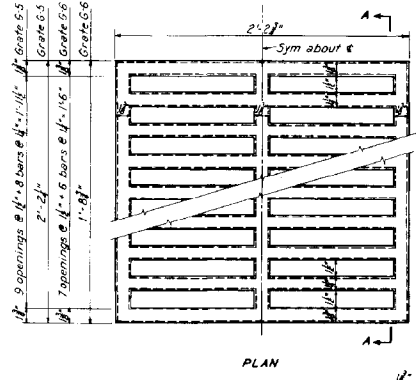
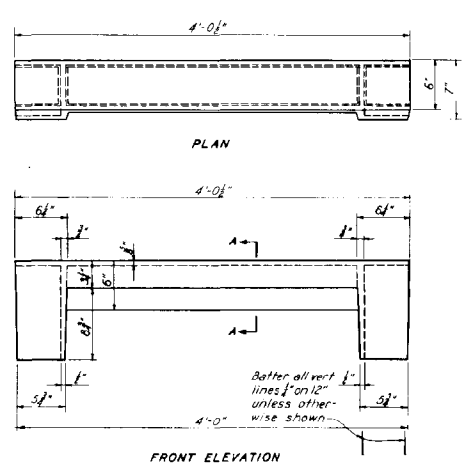


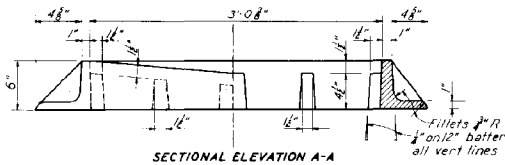
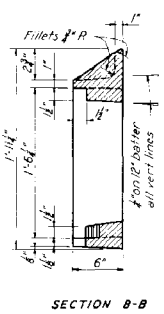
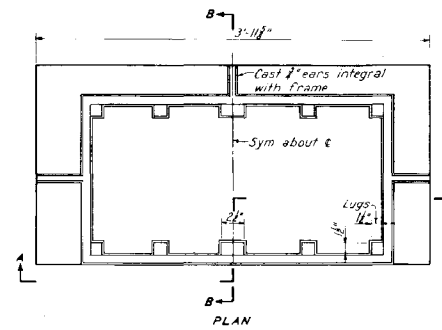
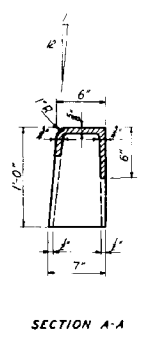
GRATES G-IR & G-IL
 ONE REQD - AS SHOWN - WEIGHT 115 LBS - G-IR, FOR FRAME F-1
 ONE REQD - OPP HAND - WEIGHT 115 LBS - G-IL, FOR FRAME F-1
 Scale 3/4"=1'-0"



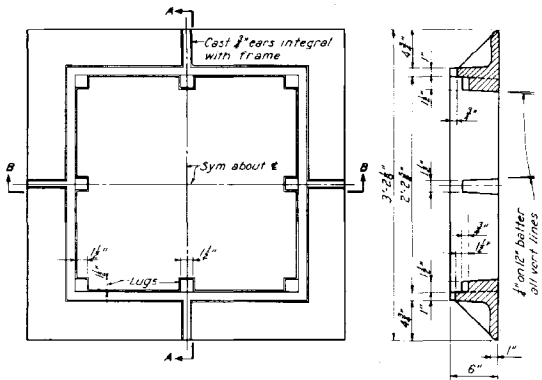
GRATES G-5 & G-6
 ONE REQD - WEIGHT 200 LBS - G-5, FOR FRAME F-5
 TWO REQD - WEIGHT 160 LBS EA - G-6, FOR FRAME F-6
 Scale 2"=1'-0"



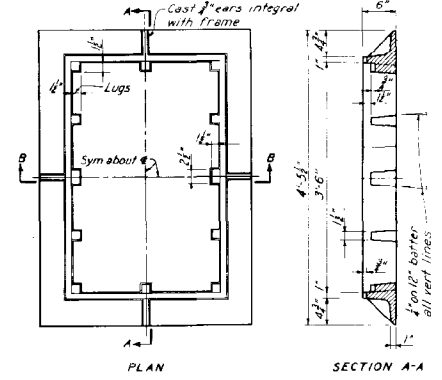
CURB CASTING C-1
 ONE REQD - WEIGHT 160 LBS - C-1, FOR FRAME F-1
 Scale 1/2"=1'-0"



FRAME F-1
 WEIGHT 320 LBS
 Scale 1/2"=1'-0"



FRAME F-5
 WEIGHT 390 LBS
 Scale 1/2"=1'-0"



FRAME F-6
 WEIGHT 500 LBS
 Scale 1"=1'-0"

NOTES:
 Castings for frames, grates and curb-irons shall conform to the requirements of the latest revision of A.S.T.M. specification A48, for Class No. 30 castings. Sealing surfaces of grates and frames shall be ground as necessary to insure an even fit. Foundry patterns in stock, similar in design and weight may be substituted after approval by the engineer.

Scale as noted

REV	DATE	MADE	CHKD	SUPV	INSP	SUBM	REC'D
CSUM	J.M.R.			SUPV	M.C.A.		
DRWN	J.M.R.			INSP	J.D.D.		
CHKD	J.M.R.			ENGR			
FILED	J.M.R.			ENGR			
DATE	J.M.R.			ENGR			

COMPANION DRAWING: 10H248

STANDARD DRAWING			
CAST IRON FRAMES & GRATES			
KINGSTON STEAM PLANT TENNESSEE VALLEY AUTHORITY DIVISION OF DESIGN			
SUBMITTED	RECOMMENDED	REVIEWED	APPROVED
B.H. Ark	Tom W. Ark	Bill M. Ark	Bill M. Ark
KNOXVILLE	4-29-52	38 C 4	10H249R1