

## Loading Text Into Excel

This example shows how to take an extract file from the Accumulated Landings system and put it into a Microsoft Excel spreadsheet, which is suitable for small datasets of up to about 65,000 records.

This same methodology could be used to load sql output into an Excel spreadsheet.



alsdatadescripti...

PL/SQL Develop...

Telnet 199.242....

2 Windows Ex...

4:15 PM

Slide 2  
LMUCCIO

- Microsoft Access
- Calculator
- E-mail  
Netscape Messenger
- Excel
- Explorer
- Internet  
Internet Explorer
- jdev902
- Paint
- Photoshop.exe
- ...

- My Documents
- My Recent Documents ▶
- My Pictures
- My Music
- My Computer
- My Network Places
- Control Panel
- Set Program Access and Defaults
- Printers and Faxes
- Help and Support
- Search

We have used FTP to bring the extract file to our PC.  
We found where FTP put the file and copied it to the C:\ directory on the pc.  
We will now bring it into Excel because we already know it is less than 65,000 records so Excel can handle it.

**Click start**

start

alsdatadescripti...

PL/SQL Develop...

Telnet 199.242. ....

2 Windows Ex...

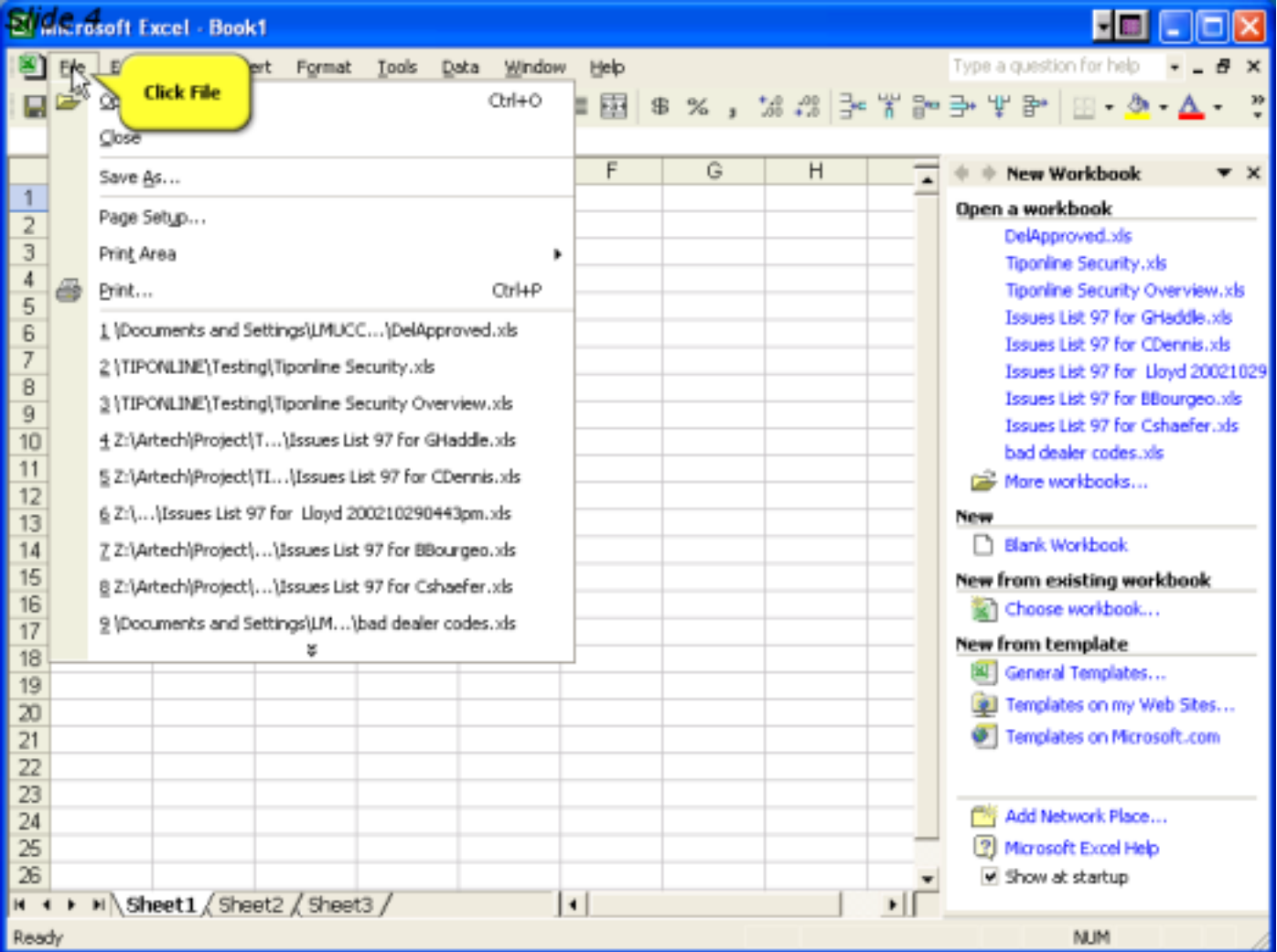
3:59 PM

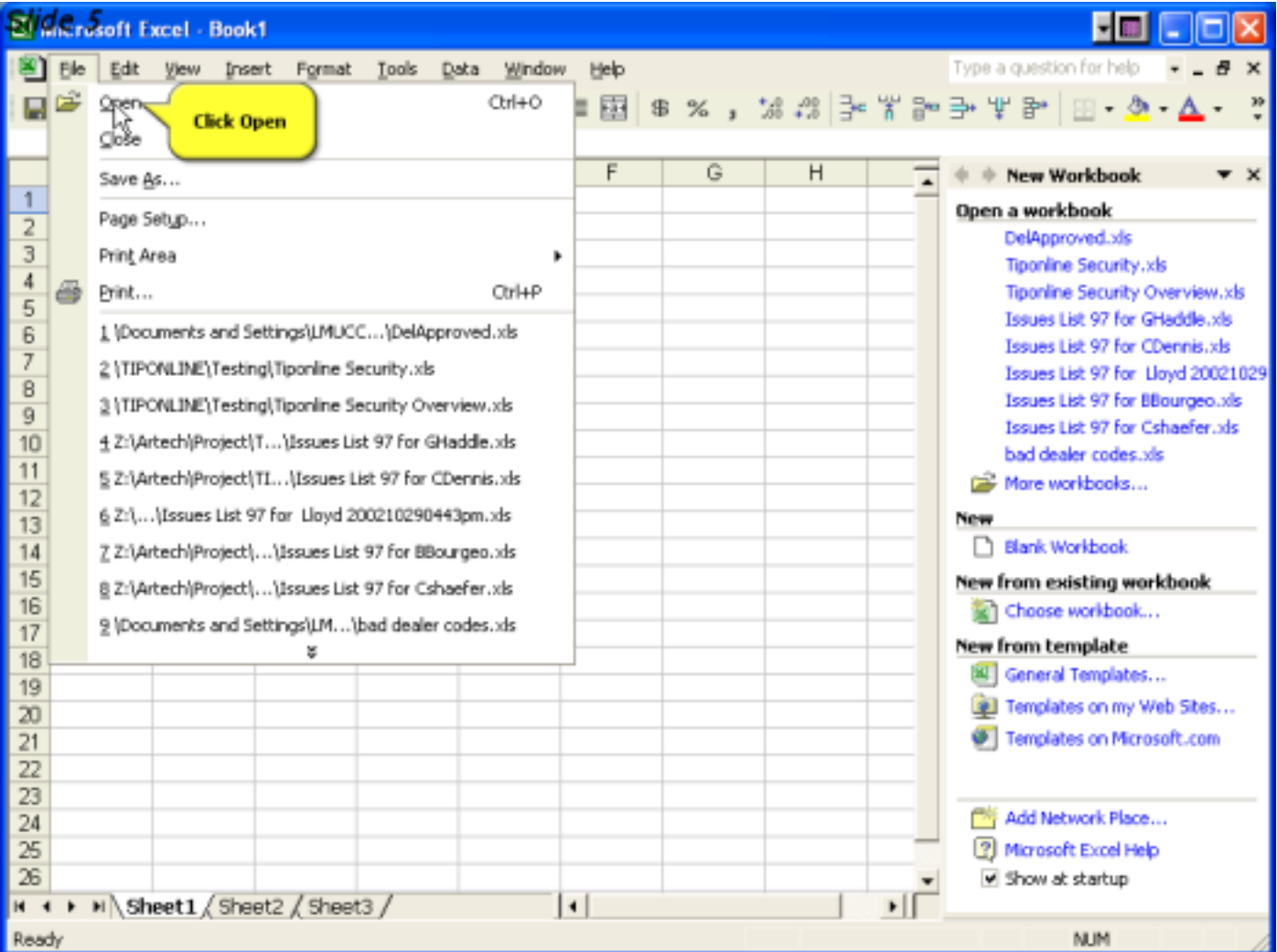
Slide 3  
LMUCCIO

The screenshot shows the Windows XP Start menu. On the left, there are application shortcuts: Microsoft Access, Calculator, E-mail (Netscape Messenger), Excel, Explorer, Internet (Internet Explorer), jdev902, Paint, Photoshop.exe, and plsqldev.exe. At the bottom of this list is an 'All Programs' button with a green arrow. On the right, there are folder shortcuts: My Documents, My Recent Documents, My Pictures, and My Music. Below these are system utilities: Set Program Access and Defaults, Printers and Faxes, Help and Support, Search, Run..., and the Dell Solution Center. A yellow callout box points to the Excel icon with the text: 'Click Excel. I use Excel frequently so it is on my start menu. You may have to click a desktop icon or find it through All Programs.'



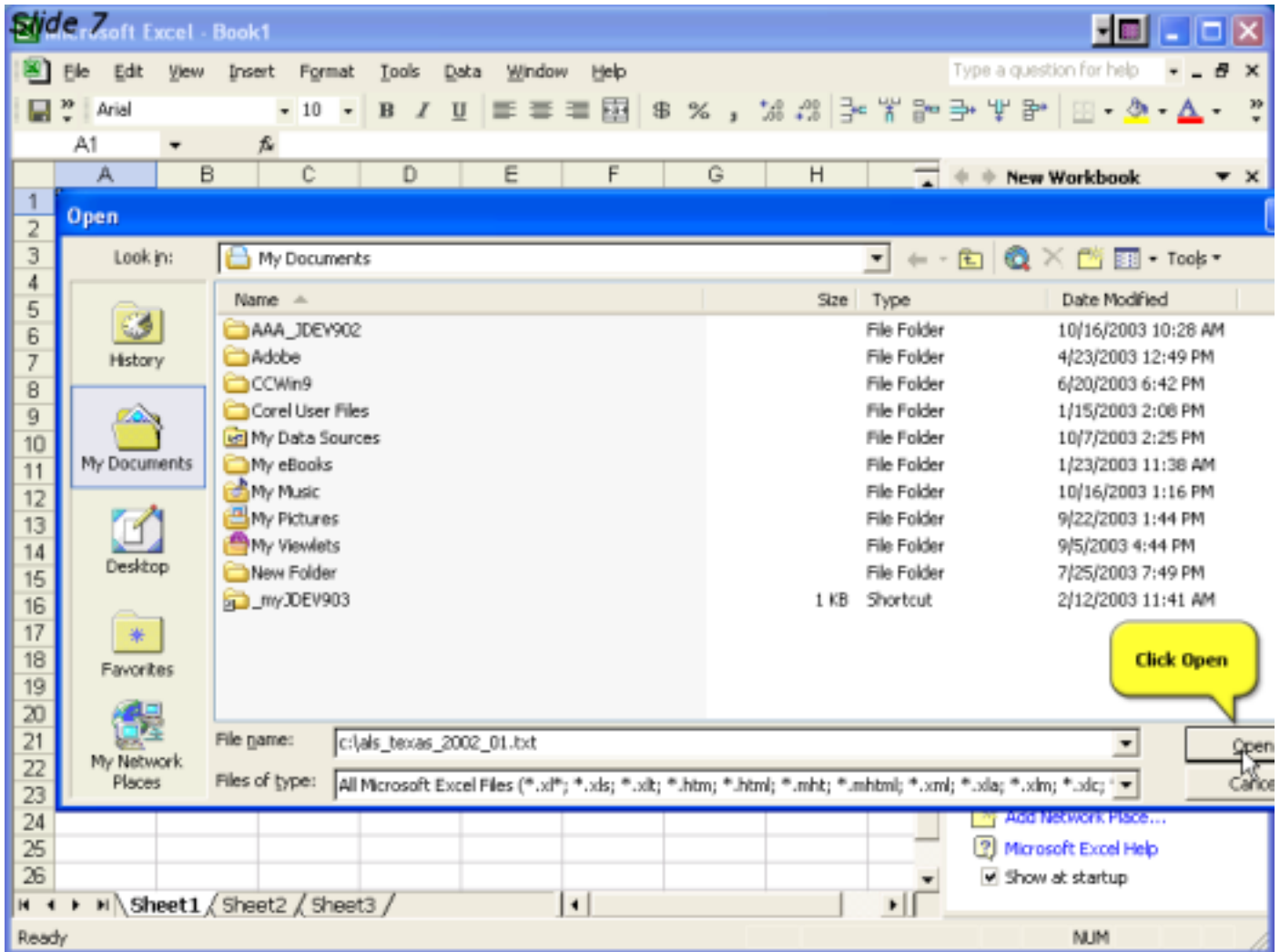
The Windows XP taskbar is visible at the bottom. It includes the 'start' button on the left, followed by several open application windows: 'alsdatadescripti...', 'PL/SQL Develop...', and 'Telnet 199.242.1...'. On the right side of the taskbar, there are icons for network status, volume, and other background processes, along with the system clock showing '3:59 PM'.





The screenshot shows the Microsoft Excel application window titled "Microsoft Excel - Book1". The menu bar includes File, Edit, View, Insert, Format, Tools, Data, Window, and Help. The toolbar contains various icons for text formatting and editing. The spreadsheet grid is visible with columns A through H and rows 1 through 26. An "Open" dialog box is overlaid on the spreadsheet, showing the "My Documents" folder. The "Look in:" field is set to "My Documents". The file list shows several folders and one shortcut file named "\_my.DEV903". The "File name:" field contains the text "c:\als\_texas\_2002\_01.txt". A yellow callout bubble with a pointer to the "File name:" field contains the text "Type the name of the extract file." The "Files of type:" field is set to "All Microsoft Excel Files (\*.xl\*)". The status bar at the bottom shows "Ready" and "NUM".

| Name             | Size | Type        | Date Modified       |
|------------------|------|-------------|---------------------|
| AAA_IDEV902      |      | File Folder | 10/16/2003 10:28 AM |
| Adobe            |      | File Folder | 4/23/2003 12:49 PM  |
| CCWin9           |      | File Folder | 6/20/2003 6:42 PM   |
| Corel User Files |      | File Folder | 1/15/2003 2:08 PM   |
| My Data Sources  |      | File Folder | 10/7/2003 2:25 PM   |
| My eBooks        |      | File Folder | 1/23/2003 11:38 AM  |
| My Music         |      | File Folder | 10/16/2003 1:16 PM  |
| My Pictures      |      | File Folder | 9/22/2003 1:44 PM   |
| My Viewlets      |      | File Folder | 9/5/2003 4:44 PM    |
| New Folder       |      | File Folder | 7/25/2003 7:49 PM   |
| _my.DEV903       | 1 KB | Shortcut    | 2/12/2003 11:41 AM  |



The Text Wizard has determined that your data is Fixed Width.  
If this is correct, choose Next, or choose the data type that best describes your data.

Original data type

Choose the file type that best describes your data:

Delimited - Characters such as commas or tabs separate each field.

Fixed width - Fields are aligned in columns with spaces between each field.

Start import at row:  File origin:

Preview of file C:\als\_texas\_2002\_01.txt.

|   |                                  |     |     |         |
|---|----------------------------------|-----|-----|---------|
| 1 | 01200246011000002443018099902701 | 127 | 61  | 000480U |
| 2 | 01200246019000003110019099902701 | 99  | 38  | 000384U |
| 3 | 01200246011000002443018099905701 | 50  | 60  | 001200U |
| 4 | 01200246003000002676019099905701 | 265 | 446 | 001603U |
| 5 | 01200246019000003110019099905701 | 61  | 80  | 001311U |

Buttons: Cancel, < Back, Next >, Finish

Ready NUM



Microsoft Excel

File Edit View Insert Format Tools Data Window Help

Type a question for help

Text Import Wizard - Step 1 of 3

The Text Wizard has determined that your data is Fixed Width.  
If this is correct, choose Next, or choose the data type that best describes your data.

Original data type

Choose the file type that best describes your data:

- Delimited - Characters such as commas or tabs separate each field.
- Fixed width - Fields are aligned in columns with spaces between each field.

Start import at row: 1 File origin: 437 : OEM United States

Preview of file C:\als\_texas\_2002\_01.txt.

|   |                                  |     |     |         |
|---|----------------------------------|-----|-----|---------|
| 1 | 01200246011000002443018099902701 | 127 | 61  | 000480U |
| 2 | 01200246019000003110019099902701 | 99  | 38  | 000384U |
| 3 | 01200246011000002443018099905701 | 50  | 60  | 001200U |
| 4 | 01200246003000002676019099905701 | 265 | 446 | 001603U |
| 5 | 01200246019000003110019099905701 | 61  | 80  | 001311U |

Cancel < Back Next > Finish

Click Next

Ready NUM

Microsoft Excel - Book1

File Edit View Insert Format Tools Data Window Help

Type a question for help

Arial 10 B I U

A1

New Workbook

### Text Import Wizard - Step 2 of 3

This screen lets you set field widths (column breaks).

Lines with arrows signify a column break.

To CREATE a break line, click at the desired position.  
 To DELETE a break line, double click on the line.  
 To MOVE a break line, click and drag it.

Excel has guessed what your columns are based upon spaces in your data.

Data preview

|                                  |     |     |         |
|----------------------------------|-----|-----|---------|
| 01200246011000002443018099902701 | 127 | 61  | 000480U |
| 01200246019000003110019099902701 | 99  | 38  | 000384U |
| 01200246011000002443018099905701 | 50  | 60  | 001200U |
| 01200246003000002676019099905701 | 265 | 446 | 001683U |
| 01200246019000003110019099905701 | 61  | 80  | 001311U |

Cancel < Back Next > Finish

Sheet1 / Sheet2 / Sheet3

Ready NUM

Microsoft Excel - Book1

File Edit View Insert Format Tools Data Window Help

Type a question for help

Arial 10 B I U

A1

New Workbook

### Text Import Wizard - Step 2 of 3

This screen lets you set field widths (column breaks).

Consulting our documentation (60.doc) on the layout of the extract file, we click on the 2nd tick mark to designate the first Excel column consists of columns 01 - 02 in the text file.

Excel draws the line between columns 2 and 3.

|                                  |     |     |         |
|----------------------------------|-----|-----|---------|
| 01200246011000002443018099902701 | 127 | 61  | 000480U |
| 01200246019000003110019099902701 | 99  | 38  | 000384U |
| 01200246011000002443018099905701 | 50  | 60  | 001200U |
| 01200246003000002676019099905701 | 265 | 446 | 001683U |
| 01200246019000003110019099905701 | 61  | 80  | 001311U |

Cancel < Back Next > Finish

Sheet1 / Sheet2 / Sheet3

Ready NUM

Microsoft Excel - Book1

File Edit View Insert Format Tools Data Window Help

Type a question for help

Arial 10 B I U

A1

New Workbook

### Text Import Wizard - Step 2 of 3

This screen lets you set field widths (column breaks).

Lines with arrows signify a column break.

To CREATE a break line, click at the desired position.

To DELETE a break line, double click on the line.

To

**Click on column 6 to mark the end of the year field.**

Data preview:

|                                  |     |     |         |
|----------------------------------|-----|-----|---------|
| 01200246011000002443018099902701 | 127 | 61  | 000480U |
| 01200246019000003110019099902701 | 99  | 38  | 000384U |
| 01200246011000002443018099905701 | 50  | 60  | 001200U |
| 01200246003000002676019099905701 | 265 | 446 | 001683U |
| 01200246019000003110019099905701 | 61  | 80  | 001311U |

Buttons: Cancel < Back Next > Finish

Sheet1 / Sheet2 / Sheet3

Ready NUM

Microsoft Excel - Book1

File Edit View Insert Format Tools Data Window Help

Type a question for help

Arial 10 B I U

A1

New Workbook

### Text Import Wizard - Step 2 of 3

This screen lets you set field widths (column breaks).

Lines with arrows signify a column break.

To CREATE a break line, click at the desired position.

To DELETE a break line, double click on the line.

To MOVE a break line, click and drag it.

Data preview

|                                  |     |     |         |
|----------------------------------|-----|-----|---------|
| 01200246011000002443018099902701 | 127 | 61  | 000480U |
| 01200246019000003110019099902701 | 99  | 38  | 000384U |
| 01200246011000002443018099905701 | 50  | 60  | 001200U |
| 01200246003000002676019099905701 | 265 | 446 | 001683U |
| 01200246019000003110019099905701 | 61  | 80  | 001311U |

Cancel < Back Next > Finish

Sheet1 / Sheet2 / Sheet3

Ready NUM

Microsoft Excel - Book1

File Edit View Insert Format Tools Data Window Help

Type a question for help

Arial 10 B I U

A1

New Workbook

### Text Import Wizard - Step 2 of 3

This screen lets you set field widths (column breaks).

Lines with arrows signify a column break.

To CREATE a break line, click at the desired position.  
 To DELETE a break line, double click on the line.  
 To MOVE a break line, click and drag it.

Data preview

|                                  |     |     |         |
|----------------------------------|-----|-----|---------|
| 01200246011000002443018099902701 | 127 | 61  | 000480U |
| 01200246019000003110019099902701 | 99  | 38  | 000384U |
| 01200246011000002443018099905701 | 50  | 60  | 001200U |
| 01200246003000002676019099905701 | 265 | 446 | 001683U |
| 01200246019000003110019099905701 | 61  | 80  | 001311U |

Cancel < Back Next > Finish

Sheet1 / Sheet2 / Sheet3 /

Ready NUM

Microsoft Excel - Book1

File Edit View Insert Format Tools Data Window Help

Type a question for help

Arial 10 B I U

A1

New Workbook

### Text Import Wizard - Step 2 of 3

This screen lets you set field widths (column breaks).

Lines with arrows signify a column break.

To CREATE a break line, click at the desired position.

To DELETE a break line, double click on the line.

To MOVE a break line, click and drag it.

Data preview

|                                  |    |    |    |     |     |         |
|----------------------------------|----|----|----|-----|-----|---------|
|                                  | 10 | 20 | 30 | 40  | 50  | 60      |
| 01200246011000002443018099902701 |    |    |    | 127 | 61  | 000480U |
| 01200246019000003110019099902701 |    |    |    | 99  | 38  | 000384U |
| 01200246011000002443018099905701 |    |    |    | 50  | 60  | 001200U |
| 01200246003000002676019099905701 |    |    |    | 265 | 446 | 001683U |
| 01200246019000003110019099905701 |    |    |    | 61  | 80  | 001311U |

Cancel < Back Next > Finish

Sheet1 / Sheet2 / Sheet3 /

Ready NUM

Microsoft Excel - Book1

File Edit View Insert Format Tools Data Window Help

Type a question for help

Arial 10 B I U

A1

New Workbook

### Text Import Wizard - Step 2 of 3

This screen lets you set field widths (column breaks).

Lines with arrows signify a column break.

To CREATE a break line, click at the desired position.  
 To DELETE a break line, double click on the line.  
 To MOVE a break line, click and drag it.

Data preview

|                                  |    |    |    |     |     |         |
|----------------------------------|----|----|----|-----|-----|---------|
|                                  | 10 | 20 | 30 | 40  | 50  | 60      |
| 01200246011000002443018099902701 |    |    |    | 127 | 61  | 000480U |
| 01200246019000003110019099902701 |    |    |    | 99  | 38  | 000384U |
| 01200246011000002443018099905701 |    |    |    | 50  | 60  | 001200U |
| 01200246003000002676019099905701 |    |    |    | 265 | 446 | 001683U |
| 01200246019000003110019099905701 |    |    |    | 61  | 80  | 001311U |

Cancel < Back Next > Finish

Sheet1 / Sheet2 / Sheet3 /

Ready NUM



Microsoft Excel - Book1

File Edit View Insert Format Tools Data Window Help

Type a question for help

Arial 10 B I U

A1

New Workbook

### Text Import Wizard - Step 2 of 3

This screen lets you set field widths (column breaks).

Lines with arrows signify a column break.

To CREATE a break line, click at the desired position.

To DELETE a break line, double click on the line.

To MOVE a break line, click and drag it.

Data preview

|                                  |    |    |    |     |     |         |
|----------------------------------|----|----|----|-----|-----|---------|
|                                  | 10 | 20 | 30 | 40  | 50  | 60      |
| 01200246011000002443018099902701 |    |    |    | 127 | 61  | 000480U |
| 01200246019000003110019099902701 |    |    |    | 99  | 38  | 000384U |
| 01200246011000002443018099905701 |    |    |    | 50  | 60  | 001200U |
| 01200246003000002676019099905701 |    |    |    | 265 | 446 | 001683U |
| 01200246019000003110019099905701 |    |    |    | 61  | 80  | 001311U |

Cancel < Back Next > Finish

Sheet1 / Sheet2 / Sheet3 /

Ready NUM

Microsoft Excel - Book1

File Edit View Insert Format Tools Data Window Help

Type a question for help

Arial 10 B I U

A1

New Workbook

### Text Import Wizard - Step 2 of 3

This screen lets you set field widths (column breaks).

Lines with arrows signify a column break.

To CREATE a break line, click at the desired position.

To DELETE a break line, double click on the line.

To MOVE a break line, click and drag it.

Data preview

|                                  | 10 | 20 | 30 | 40  | 50  | 60      |
|----------------------------------|----|----|----|-----|-----|---------|
| 01200246011000002443018099902700 |    |    |    | 127 | 61  | 000480U |
| 01200246019000003110019099902700 |    |    |    | 99  | 38  | 000384U |
| 01200246011000002443018099905700 |    |    |    | 50  | 60  | 001200U |
| 01200246003000002676019099905700 |    |    |    | 265 | 446 | 001683U |
| 01200246019000003110019099905700 |    |    |    | 61  | 80  | 001311U |

Cancel < Back Next > Finish

Sheet1 / Sheet2 / Sheet3 /

Ready NUM

[New Workbook](#)  
[Book1](#)  
[Book2](#)  
[Book3](#)  
[Book4](#)  
[Book5](#)  
[Book6](#)  
[Book7](#)  
[Book8](#)  
[Book9](#)  
[Book10](#)  
[Book11](#)  
[Book12](#)  
[Book13](#)  
[Book14](#)  
[Book15](#)  
[Book16](#)  
[Book17](#)  
[Book18](#)  
[Book19](#)  
[Book20](#)  
[Book21](#)  
[Book22](#)  
[Book23](#)  
[Book24](#)  
[Book25](#)  
[Book26](#)  
[Book27](#)  
[Book28](#)  
[Book29](#)  
[Book30](#)  
[Book31](#)  
[Book32](#)  
[Book33](#)  
[Book34](#)  
[Book35](#)  
[Book36](#)  
[Book37](#)  
[Book38](#)  
[Book39](#)  
[Book40](#)  
[Book41](#)  
[Book42](#)  
[Book43](#)  
[Book44](#)  
[Book45](#)  
[Book46](#)  
[Book47](#)  
[Book48](#)  
[Book49](#)  
[Book50](#)  
[Book51](#)  
[Book52](#)  
[Book53](#)  
[Book54](#)  
[Book55](#)  
[Book56](#)  
[Book57](#)  
[Book58](#)  
[Book59](#)  
[Book60](#)  
[Book61](#)  
[Book62](#)  
[Book63](#)  
[Book64](#)  
[Book65](#)  
[Book66](#)  
[Book67](#)  
[Book68](#)  
[Book69](#)  
[Book70](#)  
[Book71](#)  
[Book72](#)  
[Book73](#)  
[Book74](#)  
[Book75](#)  
[Book76](#)  
[Book77](#)  
[Book78](#)  
[Book79](#)  
[Book80](#)  
[Book81](#)  
[Book82](#)  
[Book83](#)  
[Book84](#)  
[Book85](#)  
[Book86](#)  
[Book87](#)  
[Book88](#)  
[Book89](#)  
[Book90](#)  
[Book91](#)  
[Book92](#)  
[Book93](#)  
[Book94](#)  
[Book95](#)  
[Book96](#)  
[Book97](#)  
[Book98](#)  
[Book99](#)  
[Book100](#)

Microsoft Excel - Book1

File Edit View Insert Format Tools Data Window Help

Type a question for help

Arial 10 B I U

A1

New Workbook

### Text Import Wizard - Step 2 of 3

This screen lets you set field widths (column breaks).

Lines with arrows signify a column break.

To CREATE a break line, click at the desired position.  
 To DELETE a break line, double click on the line.  
 To MOVE a break line, click and drag it.

Data preview

|                                  |    |    |    |     |     |         |
|----------------------------------|----|----|----|-----|-----|---------|
|                                  | 10 | 20 | 30 | 40  | 50  | 60      |
| 01200246011000002443018099902700 |    |    |    | 127 | 61  | 000480U |
| 01200246019000003110019099902700 |    |    |    | 99  | 38  | 000384U |
| 01200246011000002443018099905700 |    |    |    | 50  | 60  | 001200U |
| 01200246003000002676019099905700 |    |    |    | 265 | 446 | 001680U |
| 01200246019000003110019099905700 |    |    |    | 61  | 80  | 001311U |

Cancel < Back Next > Finish

Sheet1 / Sheet2 / Sheet3

Ready NUM

Microsoft Excel - Book1

File Edit View Insert Format Tools Data Window Help

Type a question for help

Arial 10 B I U

A1

New Workbook

### Text Import Wizard - Step 2 of 3

This screen lets you set field widths (column breaks).

Lines with arrows signify a column break.

To CREATE a break line, click at the desired position.  
 To DELETE a break line, double click on the line.  
 To MOVE a break line, click and drag it.

Data preview

|                                  | 10 | 20 | 30 | 40  | 50  | 60      |
|----------------------------------|----|----|----|-----|-----|---------|
| 01200246011000002443018099902700 |    |    |    | 127 | 61  | 0004800 |
| 01200246019000003110019099902700 |    |    |    | 99  | 38  | 0003840 |
| 01200246011000002443018099905700 |    |    |    | 50  | 60  | 0012000 |
| 01200246003000002676019099905700 |    |    |    | 265 | 446 | 0016800 |
| 01200246019000003110019099905700 |    |    |    | 61  | 80  | 0013110 |

Cancel < Back Next > Finish

Sheet1 / Sheet2 / Sheet3 /

Ready NUM

Microsoft Excel - Book1

File Edit View Insert Format Tools Data Window Help

Type a question for help

Arial 10 B I U

A1

New Workbook

### Text Import Wizard - Step 2 of 3

This screen lets you set field widths (column breaks).

Lines with arrows signify a column break.

To CREATE a break line, click at the desired position.

To DELETE a break line, double click on the line.

To MOVE a break line, click and drag it.

Data preview

|                                  | 10 | 20 | 30 | 40  | 50  | 60      |
|----------------------------------|----|----|----|-----|-----|---------|
| 01200246011000002443018099902700 |    |    |    | 127 | 61  | 000480  |
| 01200246019000003110019099902700 |    |    |    | 99  | 38  | 0003840 |
| 01200246011000002443018099905700 |    |    |    | 50  | 60  | 0012000 |
| 01200246003000002676019099905700 |    |    |    | 265 | 446 | 0016830 |
| 01200246019000003110019099905700 |    |    |    | 61  | 80  | 0013110 |

Cancel < Back Next > Finish

Sheet1 / Sheet2 / Sheet3 /

Ready NUM

**Text Import Wizard - Step 2 of 3**

This screen lets you set field widths (column breaks).

Lines with arrows signify a column break.

To CREATE a break line, click at the desired position.  
 To DELETE a break line, double click on the line.  
 To MOVE a break line, click and drag it.

**Data preview**

|                                  |    |    |    |     |     |         |
|----------------------------------|----|----|----|-----|-----|---------|
|                                  | 10 | 20 | 30 | 40  | 50  | 60      |
| 01200246011000002443018099902700 |    |    |    | 127 | 61  | 0004800 |
| 01200246019000003110019099902700 |    |    |    | 99  | 38  | 0003840 |
| 01200246011000002443018099905700 |    |    |    | 50  | 60  | 0012000 |
| 01200246003000002676019099905700 |    |    |    | 265 | 446 | 0016830 |
| 01200246019000003110019099905700 |    |    |    | 61  | 80  | 0013110 |

Buttons: Cancel, < Back, **Next >**, Finish

After the text has been divided according to the extract format, **Click Next.**

Microsoft Excel - Book1

File Edit View Insert Format Tools Data Window Help

Type a question for help

Arial 10 B I U

A1

New Workbook

### Text Import Wizard - Step 3 of 3

This screen lets you select each column and set the Data Format.

'General' converts numeric values to numbers, date values to dates, and all remaining values to text.

Advanced...

Column data format

- General
- Text
- Date: MDY
- Do not import column (skip)

Data preview

| General                          | General | General | General | General | General | General | General |
|----------------------------------|---------|---------|---------|---------|---------|---------|---------|
| 01200246011000002443018099902700 |         |         |         | 127     | 61      | 0004800 |         |
| 01200246019000003110019099902700 |         |         |         | 99      | 38      | 0003840 |         |
| 01200246011000002443018099905700 |         |         |         | 50      | 60      | 0012000 |         |
| 01200246003000002676019099905700 |         |         |         | 265     | 446     | 0016830 |         |
| 01200246019000003110019099905700 |         |         |         | 61      | 80      | 0013110 |         |

Cancel < Back Next > Finish

Click Finish

Ready NUM

Microsoft Excel - als\_texas\_2002\_01.txt

File Edit View Insert Format Tools Data Window Help

Type a question for help

Arial 10 B I U

A1 1

|    | A | B    | C  | D   | E    | F    | G   | H    | I | J     | K     | L |
|----|---|------|----|-----|------|------|-----|------|---|-------|-------|---|
| 1  | 1 | 2002 | 46 | 11  | 2443 | 180  | 999 | 270  | 1 | 127   | 61    |   |
| 2  | 1 | 2002 | 46 | 19  | 3110 | 190  | 999 | 270  | 1 | 99    | 38    |   |
| 3  | 1 | 2002 | 46 | 11  | 2443 | 180  | 999 | 570  | 1 | 50    | 60    |   |
| 4  | 1 | 2002 | 46 | 3   | 2676 | 190  | 999 | 570  | 1 | 265   | 446   |   |
| 5  | 1 | 2002 | 46 | 19  | 3110 | 190  | 999 | 570  | 1 | 61    | 80    |   |
| 6  | 1 | 2002 | 46 | 9   | 2334 | 9182 | 999 | 662  | 1 | 515   | 438   |   |
| 7  | 1 | 2002 | 46 | 21  | 4626 | 9191 | 999 | 662  | 1 | 625   | 563   |   |
| 8  | 1 | 2002 | 46 | 9   | 2170 | 9182 | 999 | 662  | 1 | 1203  | 950   |   |
| 9  | 1 | 2002 | 46 | 5   | 4252 | 192  | 999 | 662  | 1 | 139   | 56    |   |
| 10 | 1 | 2002 | 46 | 9   | 2334 | 9182 | 999 | 663  | 1 | 68    | 54    |   |
| 11 | 1 | 2002 | 46 | 5   | 3311 | 191  | 999 | 663  | 1 | 380   | 266   |   |
| 12 | 1 | 2002 | 46 | 9   |      |      |     | 663  | 1 | 1203  | 950   |   |
| 13 | 1 | 2002 | 46 | 7   |      |      |     | 925  | 1 | 2     | 1     |   |
| 14 | 1 | 2002 | 46 | 11  |      |      |     | 1050 | 1 | 71    | 130   |   |
| 15 | 1 | 2002 | 46 | 7   | 5506 | 210  | 999 | 1050 | 1 | 444   | 326   |   |
| 16 | 1 | 2002 | 46 | 11  | 2443 | 180  | 999 | 1050 | 1 | 211   | 387   |   |
| 17 | 1 | 2002 | 46 | 999 | 7072 | 180  | 999 | 1050 | 1 | 195   | 140   |   |
| 18 | 1 | 2002 | 46 | 11  | 2443 | 5189 | 999 | 1081 | 1 | 1675  | 838   |   |
| 19 | 1 | 2002 | 46 | 1   | 4320 | 193  | 999 | 1081 | 1 | 58    | 31    |   |
| 20 | 1 | 2002 | 46 | 21  | 5114 | 202  | 999 | 1081 | 1 | 45675 | 27405 |   |
| 21 | 1 | 2002 | 46 | 17  | 5199 | 1204 | 999 | 1081 | 1 | 34479 | 18963 |   |
| 22 | 1 | 2002 | 46 | 7   | 5405 | 201  | 999 | 1081 | 1 | 6299  | 4094  |   |
| 23 | 1 | 2002 | 46 | 13  | 2128 | 1189 | 999 | 1081 | 1 | 16175 | 7804  |   |
| 24 | 1 | 2002 | 46 | 13  | 2128 | 1189 | 999 | 1081 | 1 | 4750  | 2292  |   |
| 25 | 1 | 2002 | 46 | 5   | 4252 | 192  | 999 | 1081 | 1 | 8785  | 4393  |   |
| 26 | 1 | 2002 | 46 | 27  | 4559 | 202  | 999 | 1081 | 1 | 2250  | 1125  |   |

We now have the data in Excel.

\\als\_texas\_2002\_01/ NUM



Microsoft Excel - als\_texas\_2002\_01.txt

File Edit View Insert Format Tools Data Window Help

Arial A1

Type a question for help

**We need some column headings, so lets insert a row of column headings**

**Click Insert**

|    | A | B    |    |     |  | G    | H    | I   | J    | K | L     |       |
|----|---|------|----|-----|--|------|------|-----|------|---|-------|-------|
| 1  | 1 |      |    |     |  | 2443 | 180  | 999 | 270  | 1 | 127   | 61    |
| 2  | 1 |      |    |     |  | 3110 | 190  | 999 | 270  | 1 | 99    | 38    |
| 3  | 1 |      |    |     |  | 2443 | 180  | 999 | 570  | 1 | 50    | 60    |
| 4  | 1 |      |    |     |  | 2676 | 190  | 999 | 570  | 1 | 265   | 446   |
| 5  | 1 |      |    |     |  | 3110 | 190  | 999 | 570  | 1 | 61    | 80    |
| 6  | 1 |      |    |     |  | 2334 | 9182 | 999 | 662  | 1 | 515   | 438   |
| 7  | 1 |      |    |     |  | 4626 | 9191 | 999 | 662  | 1 | 625   | 563   |
| 8  | 1 |      |    |     |  | 2170 | 9182 | 999 | 662  | 1 | 1203  | 950   |
| 9  | 1 | 2002 | 46 | 5   |  | 4252 | 192  | 999 | 662  | 1 | 139   | 56    |
| 10 | 1 | 2002 | 46 | 9   |  | 2334 | 9182 | 999 | 663  | 1 | 68    | 54    |
| 11 | 1 | 2002 | 46 | 5   |  | 3311 | 191  | 999 | 663  | 1 | 380   | 266   |
| 12 | 1 | 2002 | 46 | 9   |  | 2170 | 9182 | 999 | 663  | 1 | 1203  | 950   |
| 13 | 1 | 2002 | 46 | 7   |  | 5405 | 211  | 999 | 925  | 1 | 2     | 1     |
| 14 | 1 | 2002 | 46 | 11  |  | 2443 | 180  | 999 | 1050 | 1 | 71    | 130   |
| 15 | 1 | 2002 | 46 | 7   |  | 5506 | 210  | 999 | 1050 | 1 | 444   | 326   |
| 16 | 1 | 2002 | 46 | 11  |  | 2443 | 180  | 999 | 1050 | 1 | 211   | 387   |
| 17 | 1 | 2002 | 46 | 999 |  | 7072 | 180  | 999 | 1050 | 1 | 195   | 140   |
| 18 | 1 | 2002 | 46 | 11  |  | 2443 | 5189 | 999 | 1081 | 1 | 1675  | 838   |
| 19 | 1 | 2002 | 46 | 1   |  | 4320 | 193  | 999 | 1081 | 1 | 58    | 31    |
| 20 | 1 | 2002 | 46 | 21  |  | 5114 | 202  | 999 | 1081 | 1 | 45675 | 27405 |
| 21 | 1 | 2002 | 46 | 17  |  | 5199 | 1204 | 999 | 1081 | 1 | 34479 | 18963 |
| 22 | 1 | 2002 | 46 | 7   |  | 5405 | 201  | 999 | 1081 | 1 | 6299  | 4094  |
| 23 | 1 | 2002 | 46 | 13  |  | 2128 | 1189 | 999 | 1081 | 1 | 16175 | 7804  |
| 24 | 1 | 2002 | 46 | 13  |  | 2128 | 1189 | 999 | 1081 | 1 | 4750  | 2292  |
| 25 | 1 | 2002 | 46 | 5   |  | 4252 | 192  | 999 | 1081 | 1 | 8785  | 4393  |
| 26 | 1 | 2002 | 46 | 27  |  | 4559 | 202  | 999 | 1081 | 1 | 2250  | 1125  |

Ready NUM

Microsoft Excel - als\_texas\_2002\_01.txt

File Edit View Insert Format Tools Data Window Help

Type a question for help

Rows  
Columns

**Click Rows**

|    | A | B    |    | E    | F    | G    | H   | I    | J    | K     | L     |
|----|---|------|----|------|------|------|-----|------|------|-------|-------|
| 1  | 1 |      |    | 2443 | 180  | 999  | 270 | 1    | 127  | 61    |       |
| 2  | 1 |      |    | 3110 | 190  | 999  | 270 | 1    | 99   | 38    |       |
| 3  | 1 |      |    | 2443 | 180  | 999  | 570 | 1    | 50   | 60    |       |
| 4  | 1 |      |    | 2676 | 190  | 999  | 570 | 1    | 265  | 446   |       |
| 5  | 1 |      |    | 3110 | 190  | 999  | 570 | 1    | 61   | 80    |       |
| 6  | 1 |      |    | 2334 | 9182 | 999  | 662 | 1    | 515  | 438   |       |
| 7  | 1 |      |    | 4626 | 9191 | 999  | 662 | 1    | 625  | 563   |       |
| 8  | 1 |      |    | 2170 | 9182 | 999  | 662 | 1    | 1203 | 950   |       |
| 9  | 1 | 2002 | 46 | 5    | 4252 | 192  | 999 | 662  | 1    | 139   | 56    |
| 10 | 1 | 2002 | 46 | 9    | 2334 | 9182 | 999 | 663  | 1    | 68    | 54    |
| 11 | 1 | 2002 | 46 | 5    | 3311 | 191  | 999 | 663  | 1    | 380   | 266   |
| 12 | 1 | 2002 | 46 | 9    | 2170 | 9182 | 999 | 663  | 1    | 1203  | 950   |
| 13 | 1 | 2002 | 46 | 7    | 5405 | 211  | 999 | 925  | 1    | 2     | 1     |
| 14 | 1 | 2002 | 46 | 11   | 2443 | 180  | 999 | 1050 | 1    | 71    | 130   |
| 15 | 1 | 2002 | 46 | 7    | 5506 | 210  | 999 | 1050 | 1    | 444   | 326   |
| 16 | 1 | 2002 | 46 | 11   | 2443 | 180  | 999 | 1050 | 1    | 211   | 387   |
| 17 | 1 | 2002 | 46 | 999  | 7072 | 180  | 999 | 1050 | 1    | 195   | 140   |
| 18 | 1 | 2002 | 46 | 11   | 2443 | 5189 | 999 | 1081 | 1    | 1675  | 838   |
| 19 | 1 | 2002 | 46 | 1    | 4320 | 193  | 999 | 1081 | 1    | 58    | 31    |
| 20 | 1 | 2002 | 46 | 21   | 5114 | 202  | 999 | 1081 | 1    | 45675 | 27405 |
| 21 | 1 | 2002 | 46 | 17   | 5199 | 1204 | 999 | 1081 | 1    | 34479 | 18963 |
| 22 | 1 | 2002 | 46 | 7    | 5405 | 201  | 999 | 1081 | 1    | 6299  | 4094  |
| 23 | 1 | 2002 | 46 | 13   | 2128 | 1189 | 999 | 1081 | 1    | 16175 | 7804  |
| 24 | 1 | 2002 | 46 | 13   | 2128 | 1189 | 999 | 1081 | 1    | 4750  | 2292  |
| 25 | 1 | 2002 | 46 | 5    | 4252 | 192  | 999 | 1081 | 1    | 8785  | 4393  |
| 26 | 1 | 2002 | 46 | 27   | 4559 | 202  | 999 | 1081 | 1    | 2250  | 1125  |

Ready NUM

Microsoft Excel - als\_texas\_2002\_01.txt

File Edit View Insert Format Tools Data Window Help

Type a question for help

Arial 10 B I U

K1 Value

|    | A     | B    | C     | D      | E      | F     | G    | H       | I     | J      | K     | L   |
|----|-------|------|-------|--------|--------|-------|------|---------|-------|--------|-------|-----|
| 1  | Month | Year | State | County | Dealer | Water | Gear | Species | Shell | Pounds | Value |     |
| 2  | 1     | 2002 | 46    | 11     | 2443   | 180   | 999  | 270     | 1     | 127    | 61    |     |
| 3  |       |      |       |        |        |       |      | 99      | 270   | 1      | 99    | 38  |
| 4  |       |      |       |        |        |       |      | 99      | 570   | 1      | 50    | 60  |
| 5  |       |      |       |        |        |       |      | 99      | 570   | 1      | 265   | 446 |
| 6  |       |      |       |        |        |       |      | 99      | 570   | 1      | 61    | 80  |
| 7  | 1     | 2002 | 46    | 9      | 2334   | 9182  | 999  | 662     | 1     | 515    | 438   |     |
| 8  | 1     | 2002 | 46    | 21     | 4626   | 9191  | 999  | 662     | 1     | 625    | 563   |     |
| 9  | 1     | 2002 | 46    | 9      | 2170   | 9182  | 999  | 662     | 1     | 1203   | 950   |     |
| 10 | 1     | 2002 | 46    | 5      | 4252   | 192   | 999  | 662     | 1     | 139    | 56    |     |
| 11 | 1     | 2002 | 46    | 9      | 2334   | 9182  | 999  | 663     | 1     | 68     | 54    |     |
| 12 | 1     | 2002 | 46    | 5      | 3311   | 191   | 999  | 663     | 1     | 380    | 266   |     |
| 13 | 1     | 2002 | 46    | 9      | 2170   | 9182  | 999  | 663     | 1     | 1203   | 950   |     |
| 14 | 1     | 2002 | 46    | 7      | 5405   | 211   | 999  | 925     | 1     | 2      | 1     |     |
| 15 | 1     | 2002 | 46    | 11     | 2443   | 180   | 999  | 1050    | 1     | 71     | 130   |     |
| 16 | 1     | 2002 | 46    | 7      | 5506   | 210   | 999  | 1050    | 1     | 444    | 326   |     |
| 17 | 1     | 2002 | 46    | 11     | 2443   | 180   | 999  | 1050    | 1     | 211    | 387   |     |
| 18 | 1     | 2002 | 46    | 999    | 7072   | 180   | 999  | 1050    | 1     | 195    | 140   |     |
| 19 | 1     | 2002 | 46    | 11     | 2443   | 5189  | 999  | 1081    | 1     | 1675   | 838   |     |
| 20 | 1     | 2002 | 46    | 1      | 4320   | 193   | 999  | 1081    | 1     | 58     | 31    |     |
| 21 | 1     | 2002 | 46    | 21     | 5114   | 202   | 999  | 1081    | 1     | 45675  | 27405 |     |
| 22 | 1     | 2002 | 46    | 17     | 5199   | 1204  | 999  | 1081    | 1     | 34479  | 18963 |     |
| 23 | 1     | 2002 | 46    | 7      | 5405   | 201   | 999  | 1081    | 1     | 6299   | 4094  |     |
| 24 | 1     | 2002 | 46    | 13     | 2128   | 1189  | 999  | 1081    | 1     | 16175  | 7804  |     |
| 25 | 1     | 2002 | 46    | 13     | 2128   | 1189  | 999  | 1081    | 1     | 4750   | 2292  |     |
| 26 | 1     | 2002 | 46    | 5      | 4252   | 192   | 999  | 1081    | 1     | 8785   | 4393  |     |

Enter NUM

We add each of the column headings described in the extract format.

Microsoft Excel - als\_texas\_2002\_01.txt

File Edit View Insert Format Tools Data Window Help

Type a question for help

Arial 10 B I U

02

|    | H       | I     | J      | K     | L       | M            | N        | O            | P | Q | R |
|----|---------|-------|--------|-------|---------|--------------|----------|--------------|---|---|---|
| 1  | Species | Shell | Pounds | Value | Section | Price x 1000 | Distance | State Caught |   |   |   |
| 2  | 270     | 1     | 127    | 61    |         |              | 480 U    |              |   |   |   |
| 3  | 270     | 1     | 99     | 38    |         |              | 364 U    |              |   |   |   |
| 4  | 570     | 1     | 50     | 60    |         |              | 1200 U   |              |   |   |   |
| 5  | 570     | 1     | 265    | 446   |         |              | 1683 U   |              |   |   |   |
| 6  | 570     | 1     | 61     | 80    |         |              | 1311 U   |              |   |   |   |
| 7  | 662     | 1     | 515    | 438   |         |              | 850 U    |              |   |   |   |
| 8  | 662     | 1     | 625    | 563   |         |              | 901 U    |              |   |   |   |
| 9  | 662     | 1     | 1203   | 950   |         |              | 790 U    |              |   |   |   |
| 10 | 662     | 1     | 139    | 56    |         |              | 403 U    |              |   |   |   |
| 11 | 663     | 1     | 68     | 54    |         |              | 794 U    |              |   |   |   |
| 12 | 663     | 1     | 380    | 266   |         |              | 700 U    |              |   |   |   |
| 13 | 663     | 1     | 1203   | 950   |         |              | 790 U    |              |   |   |   |
| 14 | 925     | 1     | 2      | 1     |         |              | 500 U    |              |   |   |   |
| 15 | 1050    | 1     | 71     | 130   |         |              | 1831 U   |              |   |   |   |
| 16 | 1050    | 1     | 444    | 326   |         |              | 734 U    |              |   |   |   |
| 17 | 1050    | 1     | 211    | 387   |         |              | 1834 U   |              |   |   |   |
| 18 | 1050    | 1     | 195    | 140   |         |              | 718 U    |              |   |   |   |
| 19 | 1081    | 1     | 1675   | 838   |         |              | 500 U    |              |   |   |   |
| 20 | 1081    | 1     | 58     | 31    |         |              | 534 U    |              |   |   |   |
| 21 | 1081    | 1     | 45675  | 27405 |         |              | 600 U    |              |   |   |   |
| 22 | 1081    | 1     | 34479  | 18963 |         |              | 550 U    |              |   |   |   |
| 23 | 1081    | 1     | 6299   | 4094  |         |              | 650 U    |              |   |   |   |
| 24 | 1081    | 1     | 16175  | 7804  |         |              | 482 U    |              |   |   |   |
| 25 | 1081    | 1     | 4750   | 2292  |         |              | 483 U    |              |   |   |   |
| 26 | 1081    | 1     | 8785   | 4393  |         |              | 500 U    |              |   |   |   |

Note that the price field is output with an assumed decimal, that is, 1683 means \$1.683 per pound.

Ready NUM

Microsoft Excel - als\_texas\_2002\_01.txt

File Edit View Insert Format Tools Data Window Help

Type a question for help

Arial 10 B I U

O2

|    | H       | I     | J      | K     | L       | M            | N        | O | R |
|----|---------|-------|--------|-------|---------|--------------|----------|---|---|
| 1  | Species | Shell | Pounds | Value | Section | Price x 1000 | Distance |   |   |
| 2  | 270     | 1     | 127    | 61    |         | 480          | U        |   |   |
| 3  | 270     | 1     | 99     | 38    |         | 364          | U        |   |   |
| 4  | 570     | 1     | 50     | 60    |         | 1200         | U        |   |   |
| 5  | 570     | 1     | 265    | 446   |         | 1683         | U        |   |   |
| 6  | 570     | 1     | 61     | 80    |         | 1311         | U        |   |   |
| 7  | 662     | 1     | 515    | 438   |         | 850          | U        |   |   |
| 8  | 662     | 1     | 625    | 563   |         | 901          | U        |   |   |
| 9  | 662     | 1     | 1203   | 950   |         | 790          | U        |   |   |
| 10 | 662     | 1     | 139    | 56    |         | 403          | U        |   |   |
| 11 | 663     | 1     | 68     | 54    |         | 794          | U        |   |   |
| 12 | 663     | 1     | 380    | 266   |         | 700          | U        |   |   |
| 13 | 663     | 1     | 1203   | 950   |         | 790          | U        |   |   |
| 14 | 925     | 1     | 2      | 1     |         | 500          | U        |   |   |
| 15 | 1050    | 1     | 71     | 130   |         | 1831         | U        |   |   |
| 16 | 1050    | 1     | 444    | 326   |         | 734          | U        |   |   |
| 17 | 1050    | 1     | 211    | 387   |         | 1834         | U        |   |   |
| 18 | 1050    | 1     | 195    | 140   |         | 718          | U        |   |   |
| 19 | 1081    | 1     | 1675   | 838   |         | 500          | U        |   |   |
| 20 | 1081    | 1     | 58     | 31    |         | 534          | U        |   |   |
| 21 | 1081    | 1     | 45675  | 27405 |         | 600          | U        |   |   |
| 22 | 1081    | 1     | 34479  | 18963 |         | 550          | U        |   |   |
| 23 | 1081    | 1     | 6299   | 4094  |         | 650          | U        |   |   |
| 24 | 1081    | 1     | 16175  | 7804  |         | 482          | U        |   |   |
| 25 | 1081    | 1     | 4750   | 2292  |         | 483          | U        |   |   |
| 26 | 1081    | 1     | 8785   | 4393  |         | 500          | U        |   |   |

Ready NUM

Click in Column N Header

Microsoft Excel - als\_texas\_2002\_01.txt

File Edit View Insert **Click Insert** Window Help

Type a question for help

Arial 1

N1 Distance

|    | H       | I     | J      | K     | L       | M            | N        | O            | P | Q | R |
|----|---------|-------|--------|-------|---------|--------------|----------|--------------|---|---|---|
| 1  | Species | Shell | Pounds | Value | Section | Price x 1000 | Distance | State Caught |   |   |   |
| 2  | 270     | 1     | 127    | 61    |         | 480          | U        |              |   |   |   |
| 3  | 270     | 1     | 99     | 38    |         | 364          | U        |              |   |   |   |
| 4  | 570     | 1     | 50     | 60    |         | 1200         | U        |              |   |   |   |
| 5  | 570     | 1     | 265    | 446   |         | 1683         | U        |              |   |   |   |
| 6  | 570     | 1     | 61     | 80    |         | 1311         | U        |              |   |   |   |
| 7  | 662     | 1     | 515    | 438   |         | 850          | U        |              |   |   |   |
| 8  | 662     | 1     | 625    | 563   |         | 901          | U        |              |   |   |   |
| 9  | 662     | 1     | 1203   | 950   |         | 790          | U        |              |   |   |   |
| 10 | 662     | 1     | 139    | 56    |         | 403          | U        |              |   |   |   |
| 11 | 663     | 1     | 68     | 54    |         | 794          | U        |              |   |   |   |
| 12 | 663     | 1     | 380    | 266   |         | 700          | U        |              |   |   |   |
| 13 | 663     | 1     | 1203   | 950   |         | 790          | U        |              |   |   |   |
| 14 | 925     | 1     | 2      | 1     |         | 500          | U        |              |   |   |   |
| 15 | 1050    | 1     | 71     | 130   |         | 1831         | U        |              |   |   |   |
| 16 | 1050    | 1     | 444    | 326   |         | 734          | U        |              |   |   |   |
| 17 | 1050    | 1     | 211    | 387   |         | 1834         | U        |              |   |   |   |
| 18 | 1050    | 1     | 195    | 140   |         | 718          | U        |              |   |   |   |
| 19 | 1081    | 1     | 1675   | 838   |         | 500          | U        |              |   |   |   |
| 20 | 1081    | 1     | 58     | 31    |         | 534          | U        |              |   |   |   |
| 21 | 1081    | 1     | 45675  | 27405 |         | 600          | U        |              |   |   |   |
| 22 | 1081    | 1     | 34479  | 18963 |         | 550          | U        |              |   |   |   |
| 23 | 1081    | 1     | 6299   | 4094  |         | 650          | U        |              |   |   |   |
| 24 | 1081    | 1     | 16175  | 7804  |         | 482          | U        |              |   |   |   |
| 25 | 1081    | 1     | 4750   | 2292  |         | 483          | U        |              |   |   |   |
| 26 | 1081    | 1     | 8785   | 4393  |         | 500          | U        |              |   |   |   |

Ready NUM

Microsoft Excel - als\_texas\_2002\_01.txt

File Edit View Insert Format Tools Data Window Help

Type a question for help

Columns

Worksheet

Chart...

Function...

Name

Picture

Hyperlink... Ctrl+K

Click Columns

|    | H       | I     |   | M       | N            | O        | P            | Q | R |
|----|---------|-------|---|---------|--------------|----------|--------------|---|---|
| 1  | Species | Shell |   | Section | Price x 1000 | Distance | State Caught |   |   |
| 2  |         | 270   |   |         | 480          | U        |              |   |   |
| 3  |         | 270   |   |         | 364          | U        |              |   |   |
| 4  |         | 570   |   |         | 1200         | U        |              |   |   |
| 5  |         | 570   |   |         | 1683         | U        |              |   |   |
| 6  |         | 570   |   |         | 1311         | U        |              |   |   |
| 7  |         | 662   |   |         | 850          | U        |              |   |   |
| 8  |         | 662   |   |         | 901          | U        |              |   |   |
| 9  |         | 662   | 1 | 1203    | 950          | 790      | U            |   |   |
| 10 |         | 662   | 1 | 139     | 56           | 403      | U            |   |   |
| 11 |         | 663   | 1 | 68      | 54           | 794      | U            |   |   |
| 12 |         | 663   | 1 | 380     | 266          | 700      | U            |   |   |
| 13 |         | 663   | 1 | 1203    | 950          | 790      | U            |   |   |
| 14 |         | 925   | 1 | 2       | 1            | 500      | U            |   |   |
| 15 |         | 1050  | 1 | 71      | 130          | 1831     | U            |   |   |
| 16 |         | 1050  | 1 | 444     | 326          | 734      | U            |   |   |
| 17 |         | 1050  | 1 | 211     | 387          | 1834     | U            |   |   |
| 18 |         | 1050  | 1 | 195     | 140          | 718      | U            |   |   |
| 19 |         | 1081  | 1 | 1675    | 838          | 500      | U            |   |   |
| 20 |         | 1081  | 1 | 58      | 31           | 534      | U            |   |   |
| 21 |         | 1081  | 1 | 45675   | 27405        | 600      | U            |   |   |
| 22 |         | 1081  | 1 | 34479   | 18963        | 550      | U            |   |   |
| 23 |         | 1081  | 1 | 6299    | 4094         | 650      | U            |   |   |
| 24 |         | 1081  | 1 | 16175   | 7804         | 482      | U            |   |   |
| 25 |         | 1081  | 1 | 4750    | 2292         | 483      | U            |   |   |
| 26 |         | 1081  | 1 | 8785    | 4393         | 500      | U            |   |   |

Ready NUM

Microsoft Excel - als\_texas\_2002\_01.txt

File Edit View Insert Format Tools Data Window Help

Type a question for help

Arial 10 B I U

N1 Distance

|    | H       | I     | J      | K     | L       | M            | N | O | P | Q | R |
|----|---------|-------|--------|-------|---------|--------------|---|---|---|---|---|
| 1  | Species | Shell | Pounds | Value | Section | Price x 1000 |   |   |   |   |   |
| 2  | 270     | 1     | 127    | 61    |         | 480          |   |   |   |   |   |
| 3  | 270     | 1     | 99     | 38    |         | 364          |   |   |   |   |   |
| 4  | 570     | 1     | 50     | 60    |         | 1200         | U |   |   |   |   |
| 5  | 570     | 1     | 265    | 446   |         | 1683         | U |   |   |   |   |
| 6  | 570     | 1     | 61     | 80    |         | 1311         | U |   |   |   |   |
| 7  | 662     | 1     | 515    | 438   |         | 850          | U |   |   |   |   |
| 8  | 662     | 1     | 625    | 563   |         | 901          | U |   |   |   |   |
| 9  | 662     | 1     | 1203   | 950   |         | 790          | U |   |   |   |   |
| 10 | 662     | 1     | 139    | 56    |         | 403          | U |   |   |   |   |
| 11 | 663     | 1     | 68     | 54    |         | 794          | U |   |   |   |   |
| 12 | 663     | 1     | 380    | 266   |         | 700          | U |   |   |   |   |
| 13 | 663     | 1     | 1203   | 950   |         | 790          | U |   |   |   |   |
| 14 | 925     | 1     | 2      | 1     |         | 500          | U |   |   |   |   |
| 15 | 1050    | 1     | 71     | 130   |         | 1831         | U |   |   |   |   |
| 16 | 1050    | 1     | 444    | 326   |         | 734          | U |   |   |   |   |
| 17 | 1050    | 1     | 211    | 387   |         | 1834         | U |   |   |   |   |
| 18 | 1050    | 1     | 195    | 140   |         | 718          | U |   |   |   |   |
| 19 | 1081    | 1     | 1675   | 838   |         | 500          | U |   |   |   |   |
| 20 | 1081    | 1     | 58     | 31    |         | 534          | U |   |   |   |   |
| 21 | 1081    | 1     | 45675  | 27405 |         | 600          | U |   |   |   |   |
| 22 | 1081    | 1     | 34479  | 18963 |         | 550          | U |   |   |   |   |
| 23 | 1081    | 1     | 6299   | 4094  |         | 650          | U |   |   |   |   |
| 24 | 1081    | 1     | 16175  | 7804  |         | 482          | U |   |   |   |   |
| 25 | 1081    | 1     | 4750   | 2292  |         | 483          | U |   |   |   |   |
| 26 | 1081    | 1     | 8785   | 4393  |         | 500          | U |   |   |   |   |

Excel has given us a new column.

\\als\_texas\_2002\_01/ NUM



Microsoft Excel - als\_texas\_2002\_01.txt

File Edit View Insert Format Tools Data Window Help

Type a question for help

Arial 10

SLM X ✓ =M2

|    | H       | I     | J      | K     | L       | M            | N     | O | P | Q | R |
|----|---------|-------|--------|-------|---------|--------------|-------|---|---|---|---|
| 1  | Species | Shell | Pounds | Value | Section | Price x 1000 | Price |   |   |   |   |
| 2  | 270     | 1     | 127    | 61    |         | 460          | =M2   |   |   |   |   |
| 3  | 270     | 1     | 99     | 38    |         | 364          |       |   |   |   |   |
| 4  | 570     | 1     | 50     | 60    |         | 1200         |       |   |   |   |   |
| 5  | 570     | 1     | 265    | 446   |         | 1683         |       |   |   |   |   |
| 6  | 570     | 1     | 61     | 80    |         | 1311         |       | U |   |   |   |
| 7  | 662     | 1     | 515    | 438   |         | 850          |       | U |   |   |   |
| 8  | 662     | 1     | 625    | 563   |         | 901          |       | U |   |   |   |
| 9  | 662     | 1     | 1203   | 950   |         | 790          |       | U |   |   |   |
| 10 | 662     | 1     | 139    | 56    |         | 403          |       | U |   |   |   |
| 11 | 663     | 1     | 68     | 54    |         | 794          |       | U |   |   |   |
| 12 | 663     | 1     | 380    | 266   |         | 700          |       | U |   |   |   |
| 13 | 663     | 1     | 1203   | 950   |         | 790          |       | U |   |   |   |
| 14 | 925     | 1     | 2      | 1     |         | 500          |       | U |   |   |   |
| 15 | 1050    | 1     | 71     | 130   |         | 1831         |       | U |   |   |   |
| 16 | 1050    | 1     | 444    | 326   |         | 734          |       | U |   |   |   |
| 17 | 1050    | 1     | 211    | 387   |         | 1834         |       | U |   |   |   |
| 18 | 1050    | 1     | 195    | 140   |         | 718          |       | U |   |   |   |
| 19 | 1081    | 1     | 1675   | 838   |         | 500          |       | U |   |   |   |
| 20 | 1081    | 1     | 58     | 31    |         | 534          |       | U |   |   |   |
| 21 | 1081    | 1     | 45675  | 27405 |         | 600          |       | U |   |   |   |
| 22 | 1081    | 1     | 34479  | 18963 |         | 550          |       | U |   |   |   |
| 23 | 1081    | 1     | 6299   | 4094  |         | 650          |       | U |   |   |   |
| 24 | 1081    | 1     | 16175  | 7804  |         | 482          |       | U |   |   |   |
| 25 | 1081    | 1     | 4750   | 2292  |         | 483          |       | U |   |   |   |
| 26 | 1081    | 1     | 8785   | 4393  |         | 500          |       | U |   |   |   |

Point NUM

Type Price for the column header.  
We will compute the price and produce a dollars and cents value that is more intuitive.

Microsoft Excel - als\_texas\_2002\_01.txt

File Edit View Insert Format Tools Data Window Help

Type a question for help

Arial 10 B I U

N2 =M2/1000

Enter the formula that divided the Price in the extract file by 1000

|    | H       | I     | J      | K     | L | M    | N | O | P | Q | R |
|----|---------|-------|--------|-------|---|------|---|---|---|---|---|
| 1  | Species | Shell | Pounds | Value |   |      |   |   |   |   |   |
| 2  | 270     | 1     | 127    | 61    |   | 480  | U |   |   |   |   |
| 3  | 270     | 1     | 99     | 38    |   | 364  | U |   |   |   |   |
| 4  | 570     | 1     | 50     | 60    |   | 1200 | U |   |   |   |   |
| 5  | 570     | 1     | 265    | 446   |   | 1683 | U |   |   |   |   |
| 6  | 570     | 1     | 61     | 80    |   | 1311 | U |   |   |   |   |
| 7  | 662     | 1     | 515    | 438   |   | 850  | U |   |   |   |   |
| 8  | 662     | 1     | 625    | 563   |   | 901  | U |   |   |   |   |
| 9  | 662     | 1     | 1203   | 950   |   | 790  | U |   |   |   |   |
| 10 | 662     | 1     | 139    | 56    |   | 403  | U |   |   |   |   |
| 11 | 663     | 1     | 68     | 54    |   | 794  | U |   |   |   |   |
| 12 | 663     | 1     | 380    | 266   |   | 700  | U |   |   |   |   |
| 13 | 663     | 1     | 1203   | 950   |   | 790  | U |   |   |   |   |
| 14 | 925     | 1     | 2      | 1     |   | 500  | U |   |   |   |   |
| 15 | 1050    | 1     | 71     | 130   |   | 1831 | U |   |   |   |   |
| 16 | 1050    | 1     | 444    | 326   |   | 734  | U |   |   |   |   |
| 17 | 1050    | 1     | 211    | 387   |   | 1834 | U |   |   |   |   |
| 18 | 1050    | 1     | 195    | 140   |   | 718  | U |   |   |   |   |
| 19 | 1081    | 1     | 1675   | 838   |   | 500  | U |   |   |   |   |
| 20 | 1081    | 1     | 58     | 31    |   | 534  | U |   |   |   |   |
| 21 | 1081    | 1     | 45675  | 27405 |   | 600  | U |   |   |   |   |
| 22 | 1081    | 1     | 34479  | 18963 |   | 550  | U |   |   |   |   |
| 23 | 1081    | 1     | 6299   | 4094  |   | 650  | U |   |   |   |   |
| 24 | 1081    | 1     | 16175  | 7804  |   | 482  | U |   |   |   |   |
| 25 | 1081    | 1     | 4750   | 2292  |   | 483  | U |   |   |   |   |
| 26 | 1081    | 1     | 8785   | 4393  |   | 500  | U |   |   |   |   |

Ready NUM

Microsoft Excel - als\_texas\_2002\_01.txt

File Edit View Insert Format Tools Data Window Help

Type a question for help

Arial 10 B I U

N2 =M2/1000

|    | H       | I     | J      | K     | L       | M            | N     | O        | P            | Q | R |
|----|---------|-------|--------|-------|---------|--------------|-------|----------|--------------|---|---|
| 1  | Species | Shell | Pounds | Value | Section | Price x 1000 | Price | Distance | State Caught |   |   |
| 2  | 270     | 1     | 127    | 61    |         | 480          | 0.48  | U        |              |   |   |
| 3  | 270     | 1     | 99     | 38    |         | 364          |       | U        |              |   |   |
| 4  | 570     | 1     | 50     | 80    |         | 1200         |       | U        |              |   |   |
| 5  | 570     | 1     | 265    | 446   |         | 1683         |       | U        |              |   |   |
| 6  | 570     | 1     | 61     | 80    |         | 1311         |       | U        |              |   |   |
| 7  | 662     | 1     | 515    | 438   |         | 850          |       | U        |              |   |   |
| 8  | 662     | 1     | 625    | 563   |         | 901          |       | U        |              |   |   |
| 9  | 662     | 1     | 1203   | 950   |         | 790          |       | U        |              |   |   |
| 10 | 662     | 1     | 139    | 56    |         | 403          |       | U        |              |   |   |
| 11 | 663     | 1     | 68     | 54    |         | 794          |       | U        |              |   |   |
| 12 | 663     | 1     | 380    | 266   |         | 700          |       | U        |              |   |   |
| 13 | 663     | 1     | 1203   | 950   |         | 790          |       | U        |              |   |   |
| 14 | 925     | 1     | 2      | 1     |         | 500          |       | U        |              |   |   |
| 15 | 1050    | 1     | 71     | 130   |         | 1831         |       | U        |              |   |   |
| 16 | 1050    | 1     | 444    | 326   |         | 734          |       | U        |              |   |   |
| 17 | 1050    | 1     | 211    | 387   |         | 1834         |       | U        |              |   |   |
| 18 | 1050    | 1     | 195    | 140   |         | 718          |       | U        |              |   |   |
| 19 | 1081    | 1     | 1675   | 838   |         | 500          |       | U        |              |   |   |
| 20 | 1081    | 1     | 58     | 31    |         | 534          |       | U        |              |   |   |
| 21 | 1081    | 1     | 45675  | 27405 |         | 600          |       | U        |              |   |   |
| 22 | 1081    | 1     | 34479  | 18963 |         | 550          |       | U        |              |   |   |
| 23 | 1081    | 1     | 6299   | 4094  |         | 650          |       | U        |              |   |   |
| 24 | 1081    | 1     | 16175  | 7804  |         | 482          |       | U        |              |   |   |
| 25 | 1081    | 1     | 4750   | 2292  |         | 483          |       | U        |              |   |   |
| 26 | 1081    | 1     | 8785   | 4393  |         | 500          |       | U        |              |   |   |

Using the drag bar in the lower right hand of the first cell, copy the formula to all other cells in this column up to the end of the data.

\\als\_texas\_2002\_01/ NUM

Drag outside selection to extend series or fill; drag inside to clear

Microsoft Excel - xals\_texas\_2002\_01.xls

File Edit View Insert Format Tools Data Window Help

Type a question for help

Arial 10 B I U

N2 =M2/1000

|    | G    | H       | I     | J      | K     | L       | M            | N     | O        | P     | Q      |
|----|------|---------|-------|--------|-------|---------|--------------|-------|----------|-------|--------|
|    | Gear | Species | Shell | Pounds | Value | Section | Price x 1000 | Price | Distance | State | Caught |
| 1  |      |         |       |        |       |         |              |       |          |       |        |
| 2  | 999  | 270     | 1     | 127    | 61    |         | 480          | 0.48  | U        |       |        |
| 3  | 999  | 270     | 1     | 99     | 38    |         | 364          | 0.364 | U        |       |        |
| 4  | 999  | 570     | 1     | 50     | 60    |         | 1200         | 1.2   | U        |       |        |
| 5  | 999  | 570     | 1     | 265    | 446   |         | 1683         | 1.683 | U        |       |        |
| 6  | 999  | 570     | 1     | 61     | 80    |         | 1311         | 1.311 | U        |       |        |
| 7  | 999  | 662     | 1     | 515    | 438   |         | 850          | 0.85  | U        |       |        |
| 8  | 999  | 662     | 1     | 625    | 563   |         | 901          | 0.901 | U        |       |        |
| 9  | 999  | 662     | 1     | 1203   | 950   |         | 790          | 0.79  | U        |       |        |
| 10 | 999  | 662     | 1     | 139    |       |         |              | 0.403 | U        |       |        |
| 11 | 999  | 663     | 1     | 66     |       |         |              | 0.794 | U        |       |        |
| 12 | 999  | 663     | 1     | 380    |       |         |              | 0.7   | U        |       |        |
| 13 | 999  | 663     | 1     | 1203   |       |         |              | 0.79  | U        |       |        |
| 14 | 999  | 925     | 1     | 2      | 1     |         | 500          | 0.5   | U        |       |        |
| 15 | 999  | 1050    | 1     | 71     | 130   |         | 1831         | 1.831 | U        |       |        |
| 16 | 999  | 1050    | 1     | 444    | 326   |         | 734          | 0.734 | U        |       |        |
| 17 | 999  | 1050    | 1     | 211    | 387   |         | 1834         | 1.834 | U        |       |        |
| 18 | 999  | 1050    | 1     | 195    | 140   |         | 718          | 0.718 | U        |       |        |
| 19 | 999  | 1081    | 1     | 1675   | 838   |         | 500          | 0.5   | U        |       |        |
| 20 | 999  | 1081    | 1     | 58     | 31    |         | 534          | 0.534 | U        |       |        |
| 21 | 999  | 1081    | 1     | 45675  | 27405 |         | 600          | 0.6   | U        |       |        |
| 22 | 999  | 1081    | 1     | 34479  | 18963 |         | 550          | 0.55  | U        |       |        |
| 23 | 999  | 1081    | 1     | 6299   | 4094  |         | 660          | 0.66  | U        |       |        |
| 24 | 999  | 1081    | 1     | 16175  | 7804  |         | 487          |       |          |       |        |

Ready Sum=18.737 NUM

Here we see the price computed for the other records.

|    | A     | B    | C     | D      | E      | F     | G    | H       | I     | J      | K     | L       |
|----|-------|------|-------|--------|--------|-------|------|---------|-------|--------|-------|---------|
|    | Month | Year | State | County | Dealer | Water | Gear | Species | Shell | Pounds | Value | Section |
| 6  | 1     | 2002 | 46    | 11     | 2443   | 180   | 999  | 270     | 1     | 127    | 61    |         |
| 7  | 1     | 2002 | 46    | 19     | 3110   | 190   | 999  | 270     | 1     | 99     | 38    |         |
| 8  | 1     | 2002 | 46    | 11     | 2443   | 180   | 999  | 570     | 1     | 50     | 60    |         |
| 9  | 1     | 2002 | 46    | 3      | 2676   | 190   | 999  | 570     | 1     | 265    | 446   |         |
| 10 | 1     | 2002 | 46    | 19     | 3110   | 190   | 999  | 570     | 1     | 61     | 80    |         |
| 11 | 1     | 2002 | 46    | 9      | 2334   | 9182  | 999  | 662     | 1     | 515    | 438   |         |
| 12 | 1     | 2002 | 46    | 21     | 4626   | 9191  | 999  | 662     | 1     | 625    | 563   |         |
| 13 | 1     | 2002 | 46    | 9      | 2170   | 9182  | 999  | 662     | 1     | 1203   | 950   |         |
| 14 | 1     | 2002 | 46    | 5      | 4252   | 192   | 999  | 662     | 1     | 139    | 56    |         |
| 15 | 1     | 2002 | 46    | 9      | 2334   | 9182  | 999  | 663     | 1     | 68     | 54    |         |
| 16 | 1     | 2002 | 46    | 5      | 3311   | 191   | 999  | 663     | 1     | 380    | 266   |         |
| 17 | 1     | 2002 | 46    | 9      | 2170   | 9182  | 999  | 663     | 1     | 1203   | 950   |         |
| 18 | 1     | 2002 | 46    | 7      | 5405   | 211   | 999  | 925     | 1     | 2      | 1     |         |
| 19 | 1     | 2002 | 46    | 11     | 2443   | 180   | 999  | 1050    | 1     | 71     | 130   |         |
| 20 | 1     | 2002 | 46    | 7      | 5506   | 210   | 999  | 1050    | 1     | 444    | 326   |         |
| 21 | 1     | 2002 | 46    | 11     | 2443   | 180   | 999  | 1050    | 1     | 211    | 387   |         |
| 22 | 1     | 2002 | 46    | 999    | 7072   | 180   | 999  | 1050    | 1     | 195    | 140   |         |
| 23 | 1     | 2002 | 46    | 11     | 2443   | 5189  | 999  | 1081    | 1     | 1675   | 838   |         |
| 24 | 1     | 2002 | 46    | 1      | 4320   | 193   | 999  | 1081    | 1     | 58     | 31    |         |
| 25 | 1     | 2002 | 46    | 21     | 5114   | 202   | 999  | 1081    | 1     | 45675  | 27405 |         |
| 26 | 1     | 2002 | 46    | 17     | 5199   | 1204  | 999  | 1081    | 1     | 34479  | 18963 |         |
| 27 | 1     | 2002 | 46    | 7      | 5405   | 201   | 999  | 1081    | 1     | 6299   | 4094  |         |
| 28 | 1     | 2002 | 46    | 13     | 2128   | 1189  | 999  | 1081    | 1     | 16175  | 7804  |         |
| 29 | 1     | 2002 | 46    | 13     | 2128   | 1189  | 999  | 1081    | 1     | 4750   | 2292  |         |
| 30 | 1     | 2002 | 46    | 5      | 4252   | 192   | 999  | 1081    | 1     | 8785   | 4393  |         |

Click on 1  
to select the entire first row.

Microsoft Excel - als\_texas\_2002\_01.txt

File Edit View Insert Format Tools Data Window Help

Type a question for help

Arial 10 B I U

A1 Month

|    | A     | B    | C     | D      | E      |      | I     | J      | K     | L     |       |
|----|-------|------|-------|--------|--------|------|-------|--------|-------|-------|-------|
| 1  | Month | Year | State | County | Dealer |      | Shell | Pounds | Value | Sec   |       |
| 2  | 1     | 2002 | 46    | 11     | 2443   |      | 1     | 127    | 61    |       |       |
| 3  | 1     | 2002 | 46    | 19     | 3110   |      | 1     | 99     | 38    |       |       |
| 4  | 1     | 2002 | 46    | 11     | 2443   |      | 1     | 50     | 60    |       |       |
| 5  | 1     | 2002 | 46    | 3      | 2676   |      | 1     | 265    | 446   |       |       |
| 6  | 1     | 2002 | 46    | 19     | 3110   |      | 1     | 61     | 80    |       |       |
| 7  | 1     | 2002 | 46    | 9      | 2334   | 9182 | 999   | 662    | 1     | 515   | 438   |
| 8  | 1     | 2002 | 46    | 21     | 4626   | 9191 | 999   | 662    | 1     | 625   | 563   |
| 9  | 1     | 2002 | 46    | 9      | 2170   | 9182 | 999   | 662    | 1     | 1203  | 950   |
| 10 | 1     | 2002 | 46    | 5      | 4252   | 192  | 999   | 662    | 1     | 139   | 56    |
| 11 | 1     | 2002 | 46    | 9      | 2334   | 9182 | 999   | 663    | 1     | 68    | 54    |
| 12 | 1     | 2002 | 46    | 5      | 3311   | 191  | 999   | 663    | 1     | 380   | 266   |
| 13 | 1     | 2002 | 46    | 9      | 2170   | 9182 | 999   | 663    | 1     | 1203  | 950   |
| 14 | 1     | 2002 | 46    | 7      | 5405   | 211  | 999   | 925    | 1     | 2     | 1     |
| 15 | 1     | 2002 | 46    | 11     | 2443   | 180  | 999   | 1050   | 1     | 71    | 130   |
| 16 | 1     | 2002 | 46    | 7      | 5506   | 210  | 999   | 1050   | 1     | 444   | 326   |
| 17 | 1     | 2002 | 46    | 11     | 2443   | 180  | 999   | 1050   | 1     | 211   | 387   |
| 18 | 1     | 2002 | 46    | 999    | 7072   | 180  | 999   | 1050   | 1     | 195   | 140   |
| 19 | 1     | 2002 | 46    | 11     | 2443   | 5189 | 999   | 1081   | 1     | 1675  | 838   |
| 20 | 1     | 2002 | 46    | 1      | 4320   | 193  | 999   | 1081   | 1     | 58    | 31    |
| 21 | 1     | 2002 | 46    | 21     | 5114   | 202  | 999   | 1081   | 1     | 45675 | 27405 |
| 22 | 1     | 2002 | 46    | 17     | 5199   | 1204 | 999   | 1081   | 1     | 34479 | 18963 |
| 23 | 1     | 2002 | 46    | 7      | 5405   | 201  | 999   | 1081   | 1     | 6299  | 4094  |
| 24 | 1     | 2002 | 46    | 13     | 2128   | 1189 | 999   | 1081   | 1     | 16175 | 7804  |
| 25 | 1     | 2002 | 46    | 13     | 2128   | 1189 | 999   | 1081   | 1     | 4750  | 2292  |
| 26 | 1     | 2002 | 46    | 5      | 4252   | 192  | 999   | 1081   | 1     | 8785  | 4393  |

Click this icon to right justify all the column headings

Ready NUM

Microsoft Excel - als\_texas\_2002\_01.txt

File Edit Format Tools Data Window Help

Type a question for help

Click File

Close Ctrl+O

Save As...

Page Setup...

Print Area

Print... Ctrl+P

als\_texas\_2002\_01.txt

\\Documents and Settings\JMUCC...\DelApproved.xls

\\TIPONLINE\Testing\Tipline Security.xls

\\TIPONLINE\Testing\Tipline Security Overview.xls

Z:\Artech\Project\T...\Issues List 97 for GHaddie.xls

Z:\Artech\Project\TI...Issues List 97 for CDennis.xls

Z:\...Issues List 97 for Lloyd 200210290443pm.xls

Z:\Artech\Project\...Issues List 97 for BBourgeo.xls

Z:\Artech\Project\...Issues List 97 for Cshaefer.xls

|    | F     | G    | H       | I     | J      | K     | L    |
|----|-------|------|---------|-------|--------|-------|------|
|    | Water | Gear | Species | Shell | Pounds | Value | Sect |
| 1  |       |      |         |       |        |       |      |
| 2  | 180   | 999  | 270     | 1     | 127    | 61    |      |
| 3  | 190   | 999  | 270     | 1     | 99     | 38    |      |
| 4  | 180   | 999  | 570     | 1     | 50     | 60    |      |
| 5  | 190   | 999  | 570     | 1     | 265    | 446   |      |
| 6  | 190   | 999  | 570     | 1     | 61     | 80    |      |
| 7  | 9182  | 999  | 662     | 1     | 515    | 438   |      |
| 8  | 9191  | 999  | 662     | 1     | 625    | 563   |      |
| 9  | 9182  | 999  | 662     | 1     | 1203   | 950   |      |
| 10 | 192   | 999  | 662     | 1     | 139    | 56    |      |
| 11 | 9182  | 999  | 663     | 1     | 68     | 54    |      |
| 12 | 191   | 999  | 663     | 1     | 380    | 266   |      |
| 13 | 9182  | 999  | 663     | 1     | 1203   | 950   |      |
| 14 | 211   | 999  | 925     | 1     | 2      | 1     |      |
| 15 | 180   | 999  | 1050    | 1     | 71     | 130   |      |
| 16 | 210   | 999  | 1050    | 1     | 444    | 326   |      |
| 17 | 180   | 999  | 1050    | 1     | 211    | 387   |      |
| 18 | 180   | 999  | 1050    | 1     | 195    | 140   |      |
| 19 | 1     | 2002 | 46      | 11    | 2443   | 5189  | 999  |
| 20 | 1     | 2002 | 46      | 1     | 4320   | 193   | 999  |
| 21 | 1     | 2002 | 46      | 21    | 5114   | 202   | 999  |
| 22 | 1     | 2002 | 46      | 17    | 5199   | 1204  | 999  |
| 23 | 1     | 2002 | 46      | 7     | 5405   | 201   | 999  |
| 24 | 1     | 2002 | 46      | 13    | 2128   | 1189  | 999  |
| 25 | 1     | 2002 | 46      | 13    | 2128   | 1189  | 999  |
| 26 | 1     | 2002 | 46      | 5     | 4252   | 192   | 999  |

Ready NUM

Microsoft Excel - als\_texas\_2002\_01.txt

File Edit View Insert Format Tools Data Window Help

Type a question for help

Open... Ctrl+O

Close

Save As... **Click Save As**

Page Setup...

Print Area

Print... Ctrl+P

als\_texas\_2002\_01.txt

\\Documents and Settings\JMUCC...\DelApproved.xls

\\TIPONLINE\Testing\Tipline Security.xls

\\TIPONLINE\Testing\Tipline Security Overview.xls

\\Z:\Artech\Project\T...Issues List 97 for GHaddie.xls

\\Z:\Artech\Project\T...Issues List 97 for CDennis.xls

\\Z:\...Issues List 97 for Lloyd 200210290443pm.xls

\\Z:\Artech\Project\...Issues List 97 for BBourgeo.xls

\\Z:\Artech\Project\...Issues List 97 for Cshaefer.xls

|    | F     | G    | H       | I     | J      | K     | L    |
|----|-------|------|---------|-------|--------|-------|------|
|    | Water | Gear | Species | Shell | Pounds | Value | Sect |
| 1  |       |      |         |       |        |       |      |
| 2  | 180   | 999  | 270     | 1     | 127    | 61    |      |
| 3  | 190   | 999  | 270     | 1     | 99     | 38    |      |
| 4  | 180   | 999  | 570     | 1     | 50     | 60    |      |
| 5  | 190   | 999  | 570     | 1     | 265    | 446   |      |
| 6  | 190   | 999  | 570     | 1     | 61     | 80    |      |
| 7  | 9182  | 999  | 662     | 1     | 515    | 438   |      |
| 8  | 9191  | 999  | 662     | 1     | 625    | 563   |      |
| 9  | 9182  | 999  | 662     | 1     | 1203   | 950   |      |
| 10 | 192   | 999  | 662     | 1     | 139    | 56    |      |
| 11 | 9182  | 999  | 663     | 1     | 68     | 54    |      |
| 12 | 191   | 999  | 663     | 1     | 380    | 266   |      |
| 13 | 9182  | 999  | 663     | 1     | 1203   | 950   |      |
| 14 | 211   | 999  | 925     | 1     | 2      | 1     |      |
| 15 | 180   | 999  | 1050    | 1     | 71     | 130   |      |
| 16 | 210   | 999  | 1050    | 1     | 444    | 326   |      |
| 17 | 180   | 999  | 1050    | 1     | 211    | 387   |      |
| 18 | 180   | 999  | 1050    | 1     | 195    | 140   |      |
| 19 | 1     | 2002 | 46      | 11    | 2443   | 5189  | 999  |
| 20 | 1     | 2002 | 46      | 1     | 4320   | 193   | 999  |
| 21 | 1     | 2002 | 46      | 21    | 5114   | 202   | 999  |
| 22 | 1     | 2002 | 46      | 17    | 5199   | 1204  | 999  |
| 23 | 1     | 2002 | 46      | 7     | 5405   | 201   | 999  |
| 24 | 1     | 2002 | 46      | 13    | 2128   | 1189  | 999  |
| 25 | 1     | 2002 | 46      | 13    | 2128   | 1189  | 999  |
| 26 | 1     | 2002 | 46      | 5     | 4252   | 192   | 999  |

Ready NUM



Slide 41  
Microsoft Excel - als\_texas\_2002\_01.txt

File Edit View Insert Format Tools Data Window Help  
Type a question for help

Arial 10 B I U  
A1 Month

Save As

Save in: Local Disk (C:)

| Name                   | Size | Type        | Date Modified      |
|------------------------|------|-------------|--------------------|
| CCMailArchives         |      | File Folder | 1/15/2003 10:57 AM |
| CTS                    |      | File Folder | 1/15/2003 10:57 AM |
| danny_files            |      | File Folder | 2/3/2003 11:42 AM  |
| DELL                   |      | File Folder | 4/29/2003 7:47 AM  |
| Documents and Settings |      | File Folder | 7/31/2003 2:07 PM  |
| DOS Utilities          |      | File Folder | 1/15/2003 10:59 AM |
| DRIVERS                |      | File Folder | 1/8/2003 11:58 AM  |
| FLS                    |      | File Folder | 10/21/2003 8:41 AM |
| FOXRUN                 |      | File Folder | 1/15/2003 11:01 AM |
| Home                   |      | File Folder | 9/18/2003 3:51 PM  |
| HTML                   |      | File Folder | 1/15/2003 11:02 AM |
| I386                   |      | File Folder | 4/29/2003 7:48 AM  |
| images                 |      | File Folder | 3/20/2003 9:51 AM  |
| java                   |      | File Folder | 2/25/2003 10:49 AM |
| Javascript             |      | File Folder | 10/14/2003 8:37 AM |

File name: als\_texas\_2002\_01.txt  
Save as type: Text (Tab delimited) (\*.txt)

Click this arrow to change the file from a text file

|    |   |      |    |    |      |      |     |      |   |      |      |
|----|---|------|----|----|------|------|-----|------|---|------|------|
| 24 | 1 | 2002 | 46 | 13 | 2128 | 1189 | 175 | 7804 |   |      |      |
| 25 | 1 | 2002 | 46 | 13 | 2128 | 1189 | 750 | 2292 |   |      |      |
| 26 | 1 | 2002 | 46 | 5  | 4252 | 192  | 999 | 1081 | 1 | 8785 | 4393 |

Ready NUM

Microsoft Excel - als\_texas\_2002\_01.txt

File Edit View Insert Format Tools Data Window Help

Type a question for help

Arial 10 B I U

A1 Month

Save As

Save in: Local Disk (C:)

| Name                   | Size | Type        | Date Modified      |
|------------------------|------|-------------|--------------------|
| CCMailArchives         |      | File Folder | 1/15/2003 10:57 AM |
| CTS                    |      | File Folder | 1/15/2003 10:57 AM |
| danny_files            |      | File Folder | 2/3/2003 11:42 AM  |
| DELL                   |      | File Folder | 4/29/2003 7:47 AM  |
| Documents and Settings |      | File Folder | 7/31/2003 2:07 PM  |
| DOS Utilities          |      | File Folder | 1/15/2003 10:59 AM |
| DRIVERS                |      | File Folder | 1/8/2003 11:58 AM  |
| FLS                    |      | File Folder | 10/21/2003 8:41 AM |
| FOXRUN                 |      | File Folder | 1/15/2003 11:01 AM |
| Home                   |      | File Folder | 9/18/2003 3:51 PM  |
| HTML                   |      | File Folder | 1/15/2003 11:02 AM |
| I386                   |      | File Folder | 4/29/2003 7:48 AM  |
| images                 |      | File Folder | 3/20/2003 9:51 AM  |
| java                   |      | File Folder | 2/25/2003 10:49 AM |
| Javascript             |      | File Folder | 10/14/2003 8:37 AM |

File name: als\_texas\_2002\_01.txt

Save as type: Text (Tab delimited) (\*.txt)

Save Cancel

24 1 2002 7804

25 1 2002 2292

26 1 2002 4393

als\_texas\_2002

Ready NUM

Click Microsoft Excel Workbook (\*.xls) to change it to an Excel Spreadsheet

Microsoft Excel - als\_texas\_2002\_01.txt

File Edit View Insert Format Tools Data Window Help

Type a question for help

Arial 10 B I U

A1 Month

Save As

Save in: Local Disk (C:)

| Name                   | Size | Type        | Date Modified      |
|------------------------|------|-------------|--------------------|
| CCMailArchives         |      | File Folder | 1/15/2003 10:57 AM |
| CTS                    |      | File Folder | 1/15/2003 10:57 AM |
| danny_files            |      | File Folder | 2/3/2003 11:42 AM  |
| DELL                   |      | File Folder | 4/29/2003 7:47 AM  |
| Documents and Settings |      | File Folder | 7/31/2003 2:07 PM  |
| DOS Utilities          |      | File Folder | 1/15/2003 10:59 AM |
| DRIVERS                |      | File Folder | 1/8/2003 11:58 AM  |
| FLS                    |      | File Folder | 10/21/2003 8:41 AM |
| FOXRUN                 |      | File Folder | 1/15/2003 11:01 AM |
| Home                   |      | File Folder | 9/18/2003 3:51 PM  |
| HTML                   |      | File Folder | 1/15/2003 11:02 AM |
| I386                   |      | File Folder | 4/29/2003 7:48 AM  |
| images                 |      | File Folder | 3/20/2003 9:51 AM  |
| java                   |      | File Folder | 2/25/2003 10:49 AM |
| Javascript             |      | File Folder | 10/14/2003 8:37 AM |

File name: als\_texas\_2002\_01.xls

Save as type: Microsoft Excel Workbook (\*.xls)

Note that Excel has changed the file extension for you.

|    |   |      |    |    |      |      |     |      |   |       |      |
|----|---|------|----|----|------|------|-----|------|---|-------|------|
| 24 | 1 | 2002 | 46 | 13 | 2128 | 1189 | 999 | 1081 | 1 | 16175 | 7804 |
| 25 | 1 | 2002 | 46 | 13 | 2128 | 1189 | 999 | 1081 | 1 | 4750  | 2292 |
| 26 | 1 | 2002 | 46 | 5  | 4252 | 192  | 999 | 1081 | 1 | 8785  | 4393 |

Ready NUM

Microsoft Excel - als\_texas\_2002\_01.txt

File Edit View Insert Format Tools Data Window Help

Type a question for help

Arial 10 B I U

A1 Month

A B C D E F G H I J K L

### Save As

Save in: Local Disk (C:)

| Name                   | Size | Type        | Date Modified      |
|------------------------|------|-------------|--------------------|
| CCMailArchives         |      | File Folder | 1/15/2003 10:57 AM |
| CTS                    |      | File Folder | 1/15/2003 10:57 AM |
| danny_files            |      | File Folder | 2/3/2003 11:42 AM  |
| DELL                   |      | File Folder | 4/29/2003 7:47 AM  |
| Documents and Settings |      | File Folder | 7/31/2003 2:07 PM  |
| DOS Utilities          |      | File Folder | 1/15/2003 10:59 AM |
| DRIVERS                |      | File Folder | 1/8/2003 11:58 AM  |
| FLS                    |      | File Folder | 10/21/2003 8:41 AM |
| FOXRUN                 |      | File Folder | 1/15/2003 11:01 AM |
| Home                   |      | File Folder | 9/18/2003 3:51 PM  |
| HTML                   |      | File Folder | 1/15/2003 11:02 AM |
| I386                   |      | File Folder | 4/29/2003 7:48 AM  |
| images                 |      | File Folder | 3/20/2003 9:51 AM  |
| java                   |      | File Folder | 1/15/2003 10:59 AM |
| Javascript             |      | File Folder | 1/15/2003 10:59 AM |

File name: als\_texas\_2002\_01.xls

Save as type: Microsoft Excel Workbook (\*.xls)

Click Save

|    |   |      |    |    |      |      |     |      |   |       |      |
|----|---|------|----|----|------|------|-----|------|---|-------|------|
| 24 | 1 | 2002 | 46 | 13 | 2128 | 1189 | 999 | 1081 | 1 | 16175 | 7804 |
| 25 | 1 | 2002 | 46 | 13 | 2128 | 1189 | 999 | 1081 | 1 | 4750  | 2292 |
| 26 | 1 | 2002 | 46 | 5  | 4252 | 192  | 999 | 1081 | 1 | 8785  | 4393 |

Ready NUM

Microsoft Excel - als\_texas\_2002\_01.xls

File Edit View Insert Format Tools Data Window Help

Type a question for help

Arial 10 B / U

A1 Month

|    | A     | B    | C     | D      | E      | F     | G    | H       | I     | J      | K     | L    |
|----|-------|------|-------|--------|--------|-------|------|---------|-------|--------|-------|------|
| 1  | Month | Year | State | County | Dealer | Water | Gear | Species | Shell | Pounds | Value | Sect |
| 2  | 1     | 2002 | 46    | 11     | 2443   | 180   | 999  | 270     | 1     | 127    | 61    |      |
| 3  | 1     | 2002 | 46    | 19     | 3110   | 190   | 999  | 270     | 1     | 99     | 38    |      |
| 4  | 1     | 2002 | 46    | 11     | 2443   | 180   | 999  | 570     | 1     | 50     | 60    |      |
| 5  | 1     | 2002 | 46    | 3      | 2676   | 190   | 999  | 570     | 1     | 265    | 446   |      |
| 6  | 1     | 2002 | 46    | 19     | 3110   | 190   | 999  | 570     | 1     | 61     | 80    |      |
| 7  | 1     | 2002 | 46    | 9      | 2334   | 9182  | 999  | 662     | 1     | 515    | 438   |      |
| 8  | 1     | 2002 | 46    | 21     | 4626   | 9191  | 999  | 662     | 1     | 625    | 563   |      |
| 9  | 1     | 2002 | 46    | 9      | 2170   | 9182  | 999  | 662     | 1     | 1203   | 950   |      |
| 10 | 1     | 2002 | 46    | 5      | 4252   | 192   | 999  | 662     | 1     | 139    | 56    |      |
| 11 | 1     | 2002 | 46    | 9      | 2334   | 9182  | 999  | 663     | 1     | 68     | 54    |      |
| 12 | 1     | 2002 | 46    | 5      | 3311   | 191   | 999  | 663     | 1     | 380    | 266   |      |
| 13 | 1     | 2002 | 46    | 9      | 2170   | 9182  | 999  | 663     | 1     | 1203   | 950   |      |
| 14 | 1     | 2002 | 46    | 7      | 5405   | 211   | 999  | 925     | 1     | 2      | 1     |      |
| 15 | 1     | 2002 | 46    |        |        |       |      | 950     | 1     | 71     | 130   |      |
| 16 | 1     | 2002 | 46    |        |        |       |      | 950     | 1     | 444    | 326   |      |
| 17 | 1     | 2002 | 46    |        |        |       |      | 950     | 1     | 211    | 387   |      |
| 18 | 1     | 2002 | 46    | 9      |        |       |      | 950     | 1     | 195    | 140   |      |
| 19 | 1     | 2002 | 46    |        |        |       |      | 981     | 1     | 1675   | 838   |      |
| 20 | 1     | 2002 | 46    | 1      | 4320   | 193   | 999  | 1081    | 1     | 58     | 31    |      |
| 21 | 1     | 2002 | 46    | 21     | 5114   | 202   | 999  | 1081    | 1     | 45675  | 27405 |      |
| 22 | 1     | 2002 | 46    | 17     | 5199   | 1204  | 999  | 1081    | 1     | 34479  | 18963 |      |
| 23 | 1     | 2002 | 46    | 7      | 5405   | 201   | 999  | 1081    | 1     | 6299   | 4094  |      |
| 24 | 1     | 2002 | 46    | 13     | 2128   | 1189  | 999  | 1081    | 1     | 16175  | 7804  |      |
| 25 | 1     | 2002 | 46    | 13     | 2128   | 1189  | 999  | 1081    | 1     | 4750   | 2292  |      |
| 26 | 1     | 2002 | 46    | 5      | 4252   | 192   | 999  | 1081    | 1     | 8785   | 4393  |      |

Our extract file is now an Excel spreadsheet.  
We can use Excel's analytical functions and graph it.

\\als\_texas\_2002\_01/

Saving als\_texas\_2002\_01.xls: .....

Microsoft Excel - als\_texas\_2002\_01.xls

File Edit View Insert Format Tools Data Window Help

Type a question for help

Arial 10 B / U

A1 Month

|    | A     | B    | C     | D      | E      | F     | G    | H       | I     | J      | K     | L    |
|----|-------|------|-------|--------|--------|-------|------|---------|-------|--------|-------|------|
| 1  | Month | Year | State | County | Dealer | Water | Gear | Species | Shell | Pounds | Value | Sect |
| 2  | 1     | 2002 | 46    | 11     | 2443   | 180   | 999  | 270     | 1     | 127    | 61    |      |
| 3  | 1     | 2002 | 46    | 19     | 3110   | 190   | 999  | 270     | 1     | 99     | 38    |      |
| 4  | 1     | 2002 | 46    | 11     | 2443   | 180   | 999  | 570     | 1     | 50     | 60    |      |
| 5  | 1     | 2002 | 46    | 3      | 2676   | 190   | 999  | 570     | 1     | 265    | 446   |      |
| 6  | 1     | 2002 | 46    | 19     | 3110   | 190   | 999  | 570     | 1     | 61     | 80    |      |
| 7  | 1     | 2002 | 46    | 9      | 2334   | 9182  | 999  | 662     | 1     | 515    | 438   |      |
| 8  | 1     | 2002 | 46    | 21     | 4626   | 9191  | 999  | 662     | 1     | 625    | 563   |      |
| 9  | 1     | 2002 | 46    | 9      | 2170   | 9182  | 999  | 662     | 1     | 1203   | 950   |      |
| 10 | 1     | 2002 | 46    | 5      | 4262   | 192   | 999  | 662     | 1     | 139    | 56    |      |
| 11 | 1     | 2002 | 46    | 9      | 999    | 999   | 999  | 663     | 1     | 68     | 54    |      |
| 12 | 1     | 2002 | 46    | 5      | 999    | 999   | 999  | 663     | 1     | 380    | 266   |      |
| 13 | 1     | 2002 | 46    | 9      | 999    | 999   | 999  | 663     | 1     | 1203   | 950   |      |
| 14 | 1     | 2002 | 46    | 7      | 999    | 999   | 999  | 925     | 1     | 2      | 1     |      |
| 15 | 1     | 2002 | 46    | 11     | 2443   | 180   | 999  | 1050    | 1     | 71     | 130   |      |
| 16 | 1     | 2002 | 46    | 7      | 5506   | 210   | 999  | 1050    | 1     | 444    | 326   |      |
| 17 | 1     | 2002 | 46    | 11     | 2443   | 180   | 999  | 1050    | 1     | 211    | 387   |      |
| 18 | 1     | 2002 | 46    | 999    | 7072   | 180   | 999  | 1050    | 1     | 195    | 140   |      |
| 19 | 1     | 2002 | 46    | 11     | 2443   | 5189  | 999  | 1081    | 1     | 1675   | 838   |      |
| 20 | 1     | 2002 | 46    | 1      | 4320   | 193   | 999  | 1081    | 1     | 58     | 31    |      |
| 21 | 1     | 2002 | 46    | 21     | 5114   | 202   | 999  | 1081    | 1     | 45675  | 27405 |      |
| 22 | 1     | 2002 | 46    | 17     | 5199   | 1204  | 999  | 1081    | 1     | 34479  | 18963 |      |
| 23 | 1     | 2002 | 46    | 7      | 5405   | 201   | 999  | 1081    | 1     | 6299   | 4094  |      |
| 24 | 1     | 2002 | 46    | 13     | 2128   | 1189  | 999  | 1081    | 1     | 16175  | 7804  |      |
| 25 | 1     | 2002 | 46    | 13     | 2128   | 1189  | 999  | 1081    | 1     | 4750   | 2292  |      |
| 26 | 1     | 2002 | 46    | 5      | 4252   | 192   | 999  | 1081    | 1     | 8785   | 4393  |      |

\\als\_texas\_2002\_01/

Saving als\_texas\_2002\_01.xls: .....

The End