

1. Incident Name

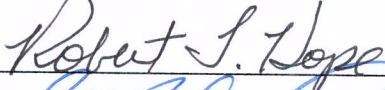
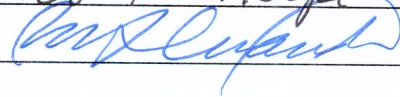
Fly Ash Pond Incident

2. Issue (Date/Time)

1/16/2009 6:23:02 PM

ORIGINAL DOCUMENT

3. Approved by Incident Commander(s):

<u>ORG</u>	<u>NAME</u>	
RPIC	Robert T. Hope (TVA)	
SOSC	Bob Alexander (SOSC)	
Roane Co.	Howie Rose (RCEMA)	

**Incident Action Plan Addendum
January 16, 2009**

Addendum to IAP Period #7 – January 9 – January 23, 2009
ICS 204 – Standing up of Division E – resources shared with Division D

4. Prepared by:

Melanie Jarrell, Planning

1. Incident Name					2. Operational Period (Date / Time)		Assignment List	
Fly Ash Pond Incident					From: JAN 9 09 06:00 To: JAN 23 09 06:00		ICS 204-CG	
3. Branch					4. Division/Group/Staging			
					Division E			
5. Operational Personnel		Name		Affiliation		Contact # (s)		
Operations Section Chief:		Bob Summers		Tennessee Valley Authority				
Branch Director:		Dave Stevens		O'Briens Response Management				
Division/Group Supervisor/STAM:		Chad Oliver		Tennessee Valley Authority				
6. Resources Assigned					"X" indicates 204a attachment with additional instructions			
Strike Team/Task Force/Resource Identifier		Leader	Contact Info. #	# Of Persons	Reporting Info/Notes/Remarks			
7150' of 18" Boom					Determined based on need - from Div D <input type="checkbox"/>			
5 - Workboats					Determined based on need - from Div D <input type="checkbox"/>			
2 - Vacuum Trucks (SWS)					Determined based on need - from Div D <input type="checkbox"/>			
1 - Skimming Barge Sets (SWS)					Determined based on need - from Div D <input type="checkbox"/>			
1 - Track Hoe (SWS)					Determined based on need - from Div D <input type="checkbox"/>			
1 - Air Compressor (SWS)					Determined based on need - from Div D <input type="checkbox"/>			
1 - Track Hoe/Excavator (SWS)					Determined based on need - from Div D <input type="checkbox"/>			
3 - Trash Pumps (SWS)					Determined based on need - from Div D <input type="checkbox"/>			
9 - Vehicles					Determined based on need - from Div D <input type="checkbox"/>			
25' of 8-12" Boom					Determined based on need - from Div D <input type="checkbox"/>			
17 - Personnel (SWS)					Determined based on need - from Div D <input type="checkbox"/>			
7. Work Assignments								
Recover floating debris wherever possible. Make use of catch booms to recover material in the heaviest concentrations possible. Recover material making landfall on public beaches. These will be daylight operations only. Kingston Water intake has been boomed off and will be maintained.								
8. Special Instructions								
Tailgate Safety Meetings will be conducted prior to the day's operations. All personnel will follow the guidelines set forth in the Site Safety Plan. All incidents and near misses will be reported to a safety representative as soon as possible. On water operations will not be conducted while visibility is limited unless it is safe to do so. All personnel will wear PFDs while working on the water. If a deceased bird is found, do not touch. Mark the bird's locations and call the Command Post immediately.								
9. Communications (radio and/or phone contact numbers needed for this assignment)								
Name / Function		Radio Freq./System/Channel			Phone		Cell/Pager	
_____		_____			_____		_____	
_____		_____			_____		_____	
_____		_____			_____		_____	
Emergency Communications								
Medical: _____			Evacuation: _____			Other: _____		
10. Prepared by		Date/Time	11. Reviewed by (PSC)		Date/Time	12. Reviewed by (OSC)		Date/Time
M. Jarrell		JAN 16 09 18:17	R Majiros			M Ploen		

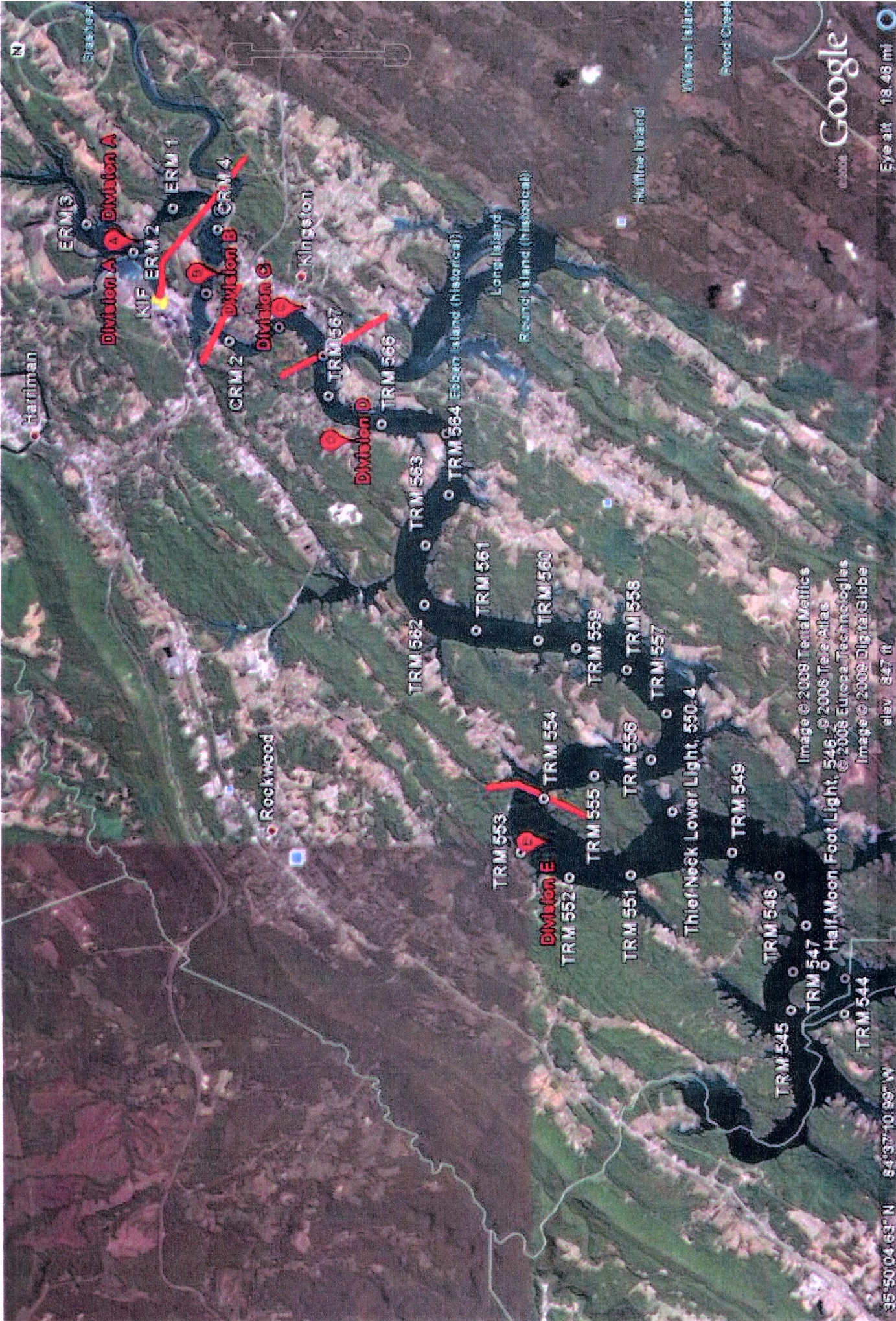


Image © 2009 TerraMetrics
Image © 2008 TeleAtlas
Image © 2008 Europa Technologies
Image © 2008 DigitalGlobe

Eye alt 13.48 mi

35°50'04.65" N 84°37'10.98" W elev 847 ft