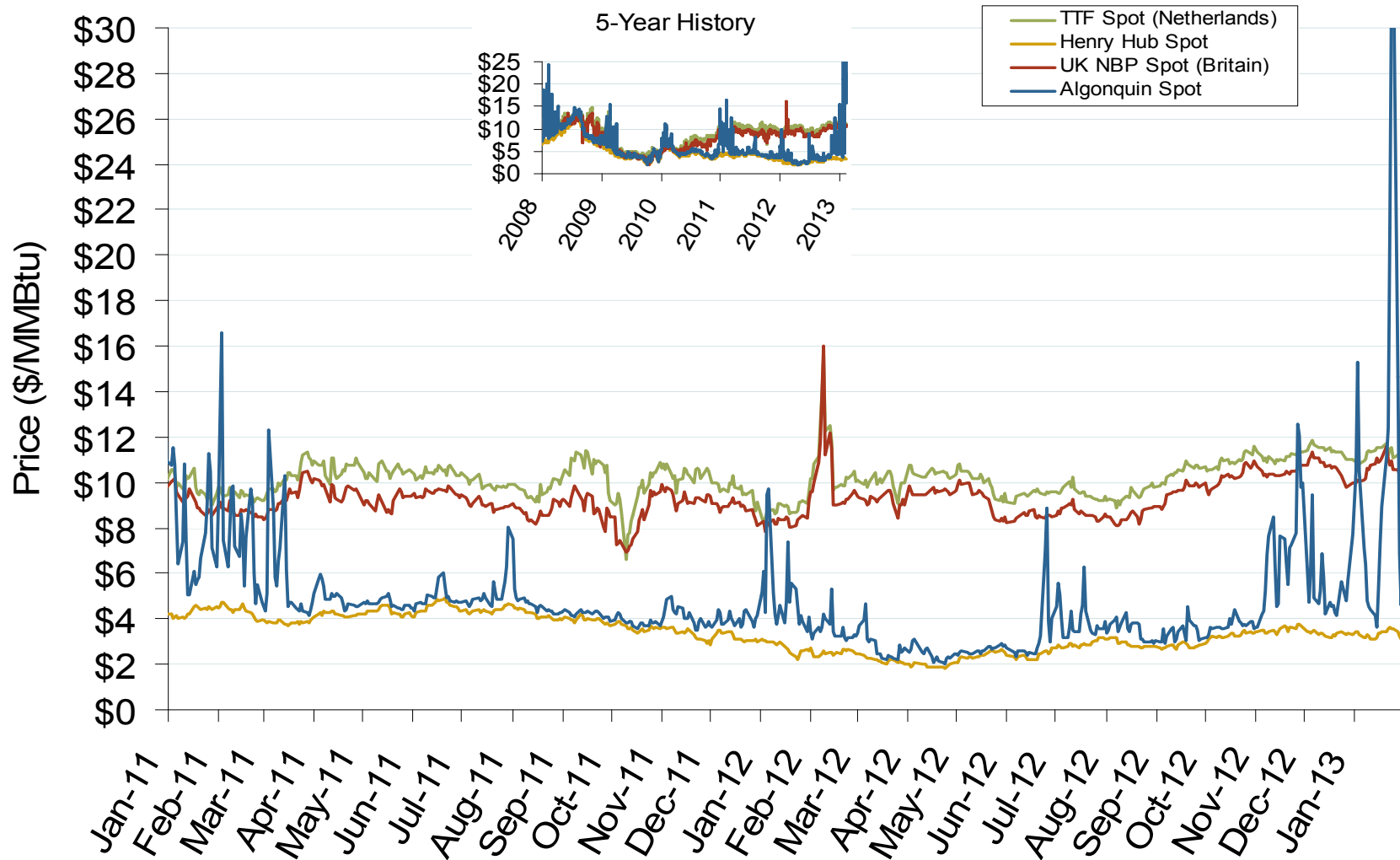


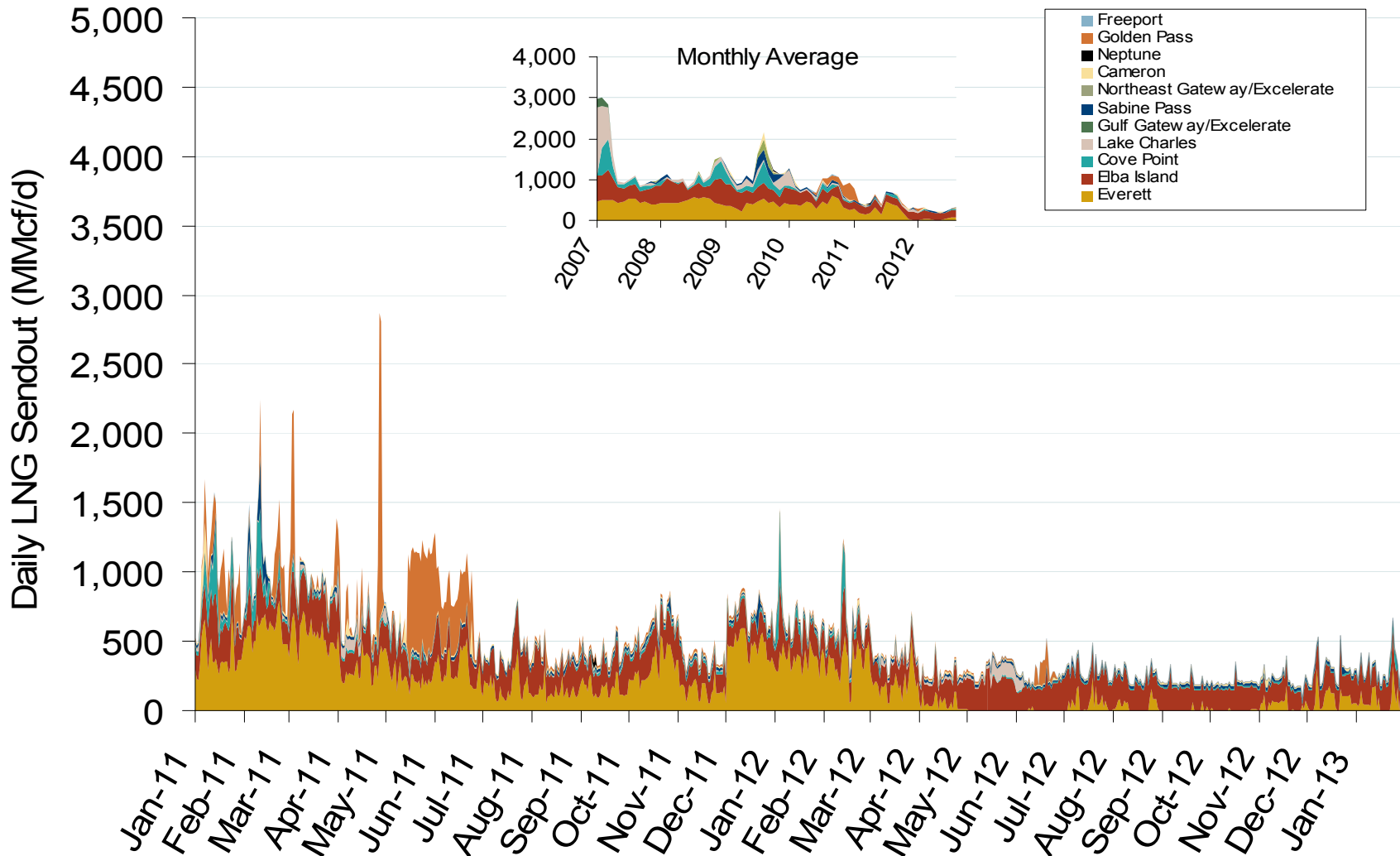
World LNG Estimated March 2013 Landed Prices



Atlantic Basin European and US Spot Natural Gas Prices



Daily Gas Sendout from Existing U.S. LNG Facilities



Notes: Everett data includes flows onto the AGT and TGP interstate lines, plus estimates of flows to the Mystic 7 power plant, Keyspan Boston Gas, and LNG trucked out of the terminal. Excludes flows to the Freeport LNG which flows via intrastate pipelines and flows to the Mystic 8 and 9 power plants.

Source: Derived from *Bentek Energy* data

February 2013

Updated: February 07, 2013

Monthly Gas Imports at Existing U.S. LNG Facilities

