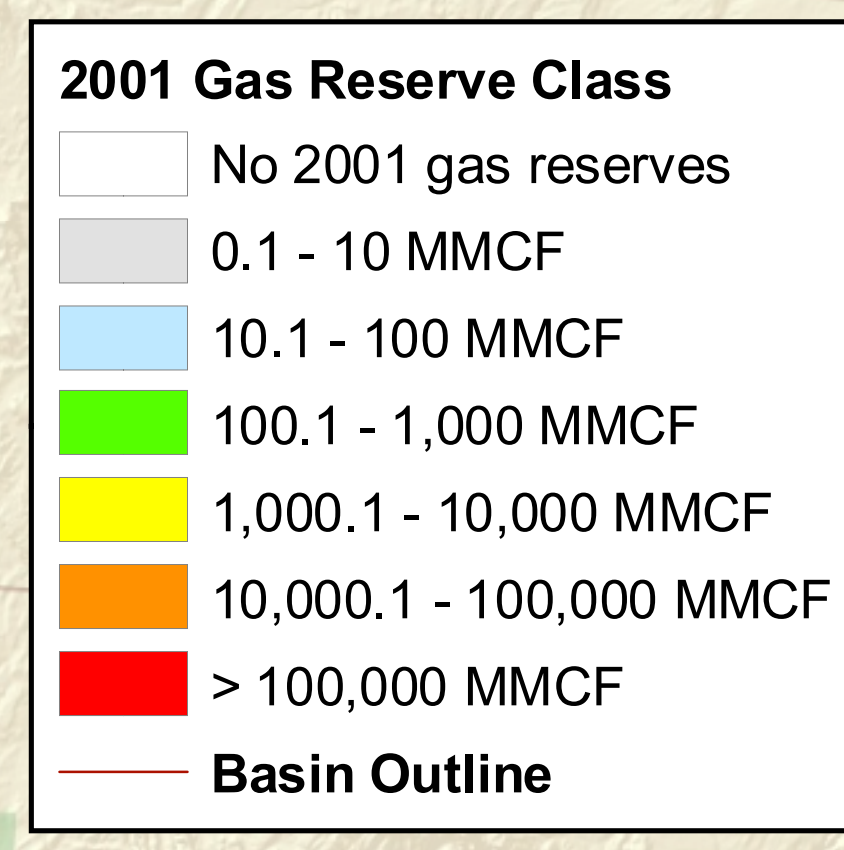
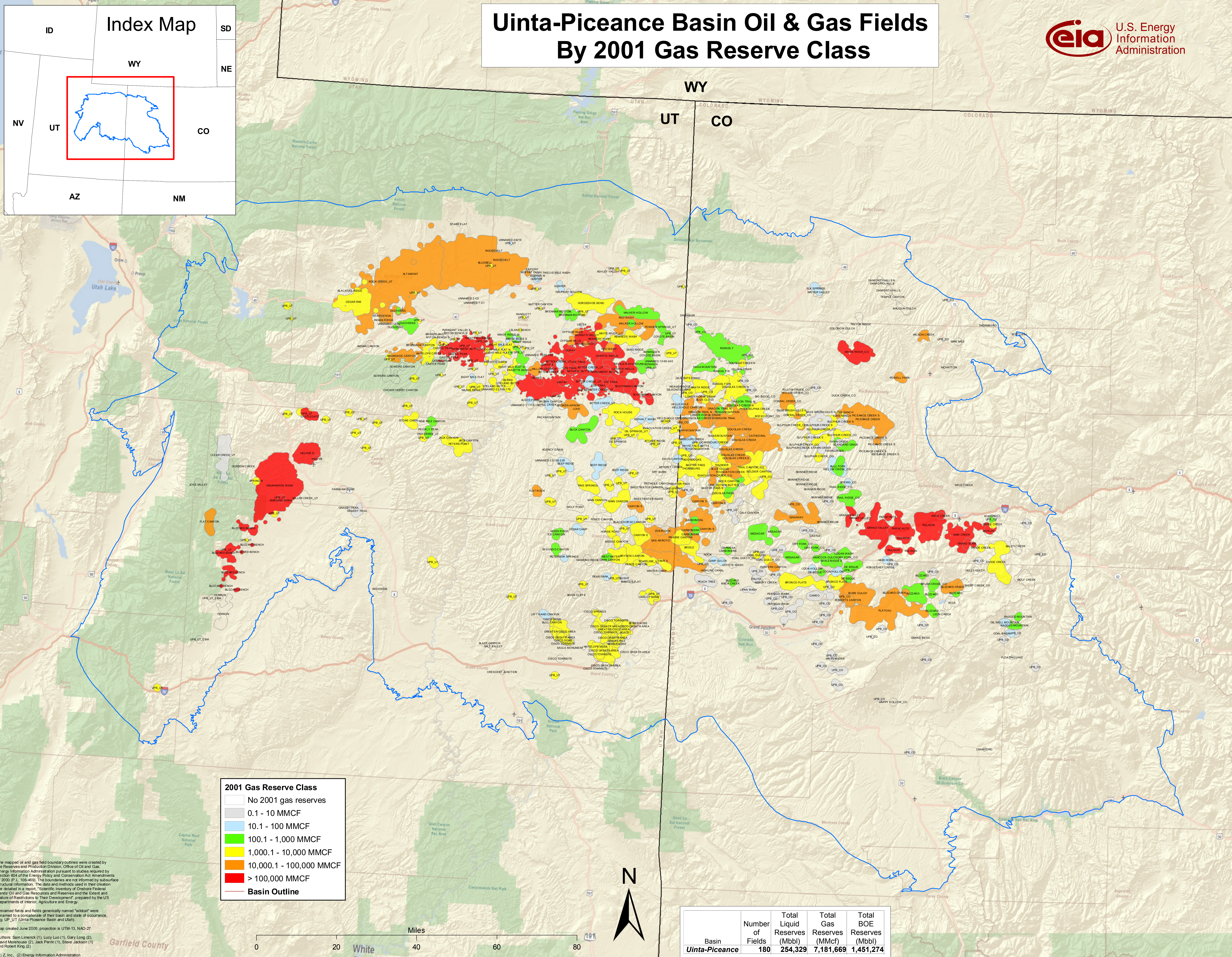


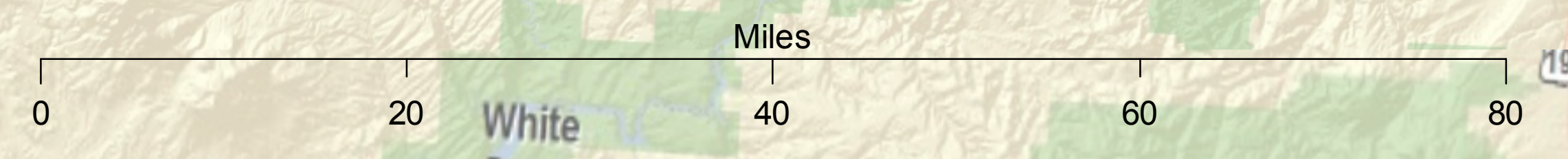
Uinta-Piceance Basin Oil & Gas Fields By 2001 Gas Reserve Class



The mapped oil and gas field boundary outlines were created by the Reserves and Production Division, Office of Oil and Gas, Energy Information Administration pursuant to studies required by Section 604 of the Energy Policy and Conservation Act Amendments of 2000 (P.L. 106-469). The boundaries are not informed by subsurface structural information. The data and methods used in their creation are detailed in a report, "Scientific Inventory of Onshore Federal Lands' Oil and Gas Resources and Reserves and the Extent and Nature of Reservoirs to Their Development", prepared by the U.S. Departments of Interior, Agriculture and Energy.

Unnamed fields and fields generally named "wildcat" were renamed to a combination of their basin and state of occurrence, e.g. UP_UT (Uinta-Piceance Basin and Utah).

Map created June 2005, projection is UTM-13, NAD-27.
 Authors: Sam Limerick (1), Lucy Luo (1), Gary Long (2), David Morehouse (2), Jack Parris (1), Steve Jackson (1) and Robert King (2)



Basin	Number of Fields	Total Liquid Reserves (Mbbbl)	Total Gas Reserves (MMcf)	Total BOE Reserves (Mbbbl)
Uinta-Piceance	180	254,329	7,181,669	1,451,274