

# NEW JERSEY BOARD OF PUBLIC UTILITIES

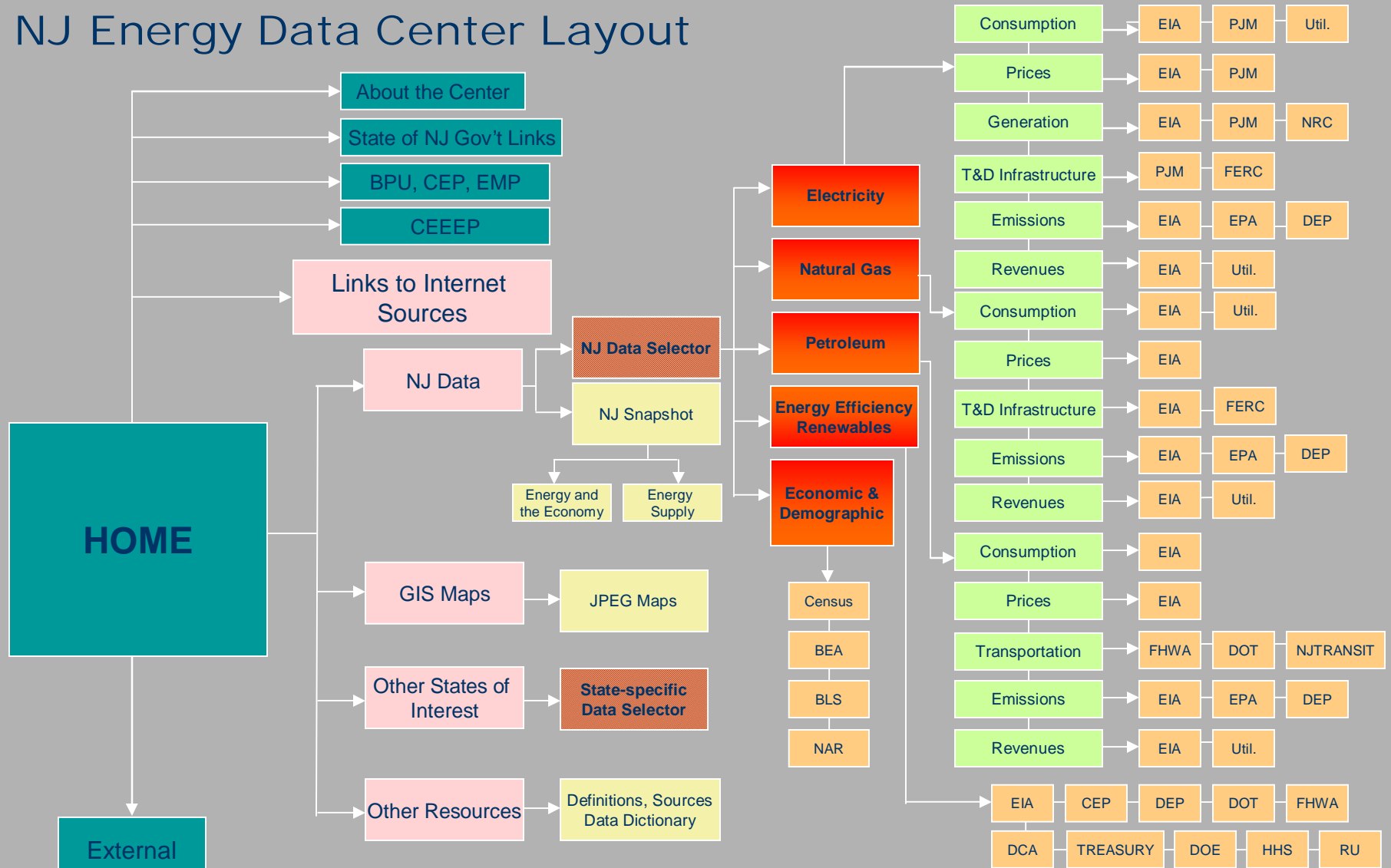
## An Overview of State Level Energy Data in the development of New Jersey Energy Master Plan

Bharat C. Patel, D. Eng. Sc., P.E.  
Director of Planning

May 22, 2008

- New Jersey Energy Data Center
- Governor Corzine's Initiatives
  - Global Warming*
  - Energy Master Plan*

# NJ Energy Data Center Layout



**KEY**

- Homepages
- Main Menu Items; links to pages within EDC website
- End pages w/ links, graphs, etc.

- Data Selector – Allows users to choose from 5 categories
- Main Data Categories w/ Drop Down Menus
- Drop Down Menu Categories w/ further menu items
- Drop Down Menu Categories w/ final drop down menus

5/20/2008

# New Jersey Energy Data Center, "Data Dictionary" as of 05/06/08

## Electricity

### Consumption

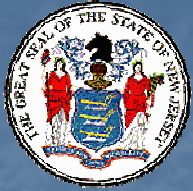
EIA	Table Title	Units	Time Period	Source	Type
	Form 826 - Monthly Electric Utility Sales and Revenue Data (MWh)	MWh	1990-2007	Form EIA-826 Database Monthly Electric Utility Sales and Revenue Data <a href="http://www.eia.doe.gov/cneaf/electricity/page/eia826.html">http://www.eia.doe.gov/cneaf/electricity/page/eia826.html</a>	Monthly

PJM	Table Title	Units	Time Period	Source	Type
	Historical Load Data, JCPL	MW	1993-2007	Historical Load Data <a href="http://www.pjm.com/services/system-performance/historical.html">http://www.pjm.com/services/system-performance/historical.html</a>	Annual
	Historical Load Data, PJM	MW	1993-2007	Historical Load Data <a href="http://www.pjm.com/services/system-performance/historical.html">http://www.pjm.com/services/system-performance/historical.html</a>	Annual
	Historical Load Data, NJ	MW	1993-2007	Historical Load Data <a href="http://www.pjm.com/services/system-performance/historical.html">http://www.pjm.com/services/system-performance/historical.html</a>	Annual

Utilities	Table Title	Units	Time Period	Source	Type
	Monthly Utility Reports to BPU	# of	2004-2006	Monthly email listserve	Monthly
	Office of NJ State Climatologist (ONJSC) Average cooling days, data from 1971-200	days	1971-2000	<a href="http://climate.rutgers.edu/stateclim_v1/norms/monthly/cdd.html">http://climate.rutgers.edu/stateclim_v1/norms/monthly/cdd.html</a>	
	Office of NJ State Climatologist (ONJSC) Average heating days, data from 1971-201	days	1971-2000	<a href="http://climate.rutgers.edu/stateclim_v1/norms/monthly/hdd.html">http://climate.rutgers.edu/stateclim_v1/norms/monthly/hdd.html</a>	

### Prices

EIA	Table Title	Units	Time Period	Source	Type
	Form 826 - Monthly Electric Utility Sales and Revenue Data (¢/KWh)	¢/KWh	1990-2007	Form EIA-826 Database Monthly Electric Utility Sales and Revenue Data <a href="http://www.eia.doe.gov/cneaf/electricity/page/eia826.html">http://www.eia.doe.gov/cneaf/electricity/page/eia826.html</a>	Monthly



# Governor Corzine's Initiatives

- Global Warming
- Energy Master Plan

# Global Warming

- Executive Order 54
- Global Warming Response Act

<http://www.state.nj.us/globalwarming/index.shtml>

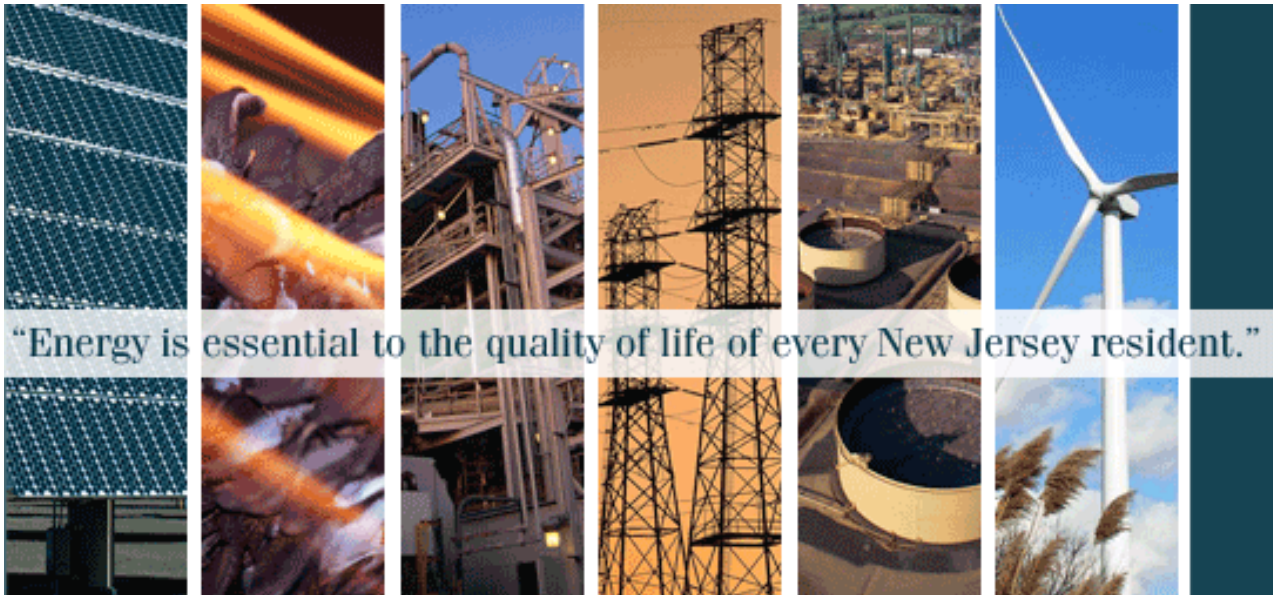
# Greenhouse Gas Emission Targets

- 1990 = 120 MMT
- 2005 = 138 MMT
- 2006 = TBD assume 140 MMT
- 2020 = 158 MMT based on BAU
- 2020 = 120 MMT Global Warming Response Act
- 2050 = 20% of 2006 (assume 28 MMT)

# Energy Master Plan



## STATE OF NEW JERSEY ENERGY MASTER PLAN



"Energy is essential to the quality of life of every New Jersey resident."

<http://nj.gov/emp>



# Goals

- Maximize the State's energy conservation and energy efficiency to achieve reductions in energy consumption of at least 20% by 2020.
- Reduce peak demand for electricity by 5,700 MW by 2020.
- Meet 22.5% of the State's electricity needs from renewable sources.
- Develop new low carbon emitting, efficient power plants and close the gap between the supply and demand of electricity
- Invest in innovative clean energy technologies and businesses to stimulate the industry's growth in New Jersey.

# Business As Usual vs. Alternative Case

- Business as Usual (BAU)
  - Existing economic and energy efficiency trends
  - Includes Regional Greenhouse Gas Initiative (RGGI)
  - Includes the “22.50%” RPS in 2020
- Alternative Case
  - Covers all sectors (heating, electricity)
  - Focuses on energy efficiency and renewable sources
  - Substantial emphasis on electricity

# Energy Modeling Flow Chart

Business as Usual Assumptions

Alternative Assumptions

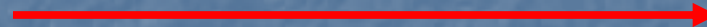


**DAYZER**  
GEOGRAPHIC SCOPE: PJM  
PURPOSE: Grid model;  
Generation/transmission changes;  
Locational Marginal Prices;  
Unit Commitment;  
& Dispatch  
OUTPUT: Electricity Price Projections &  
Power Plant Emissions

(BAU electricity prices) –  
(Alternative electricity Prices)



Price  $\Delta$



**R/ECON™**  
GEOGRAPHIC SCOPE:  
New Jersey  
PURPOSE:  
Economic &  
Environmental  
Impact Model  
OUTPUT:  
Jobs,  
Gross State Product,  
Prices & Taxes

Capacity prices are calculated based on DAYZER energy prices and added to BAU and Alternative cases

# Implementation Strategies

- **Conservation and Energy Efficiency**
  - Energy Efficiency Program for Existing Buildings
  - Enhanced Building Codes
  - Appliance Standards
  - Best Practices Manuals and Energy Audits for 10 Industry Groups
  - Education and Public Outreach
- **Reduce Peak Demand**
  - Decrease Size of Customers in Real-time Pricing
  - Demand Response Programs
  - Load Management Program for Large Commercial and Industrial Customers
  - Block Tariff Pricing
  - A Pilot for Testing Components of a "Smart Grid"
- **Renewable Energy**
  - Solar Transition
  - Offshore Wind
  - Onshore Wind
  - Biofuel
  - Biomass-fired Electric Production Capacity
  - Increase the Renewable Portfolio Standards for 2021-2025
- **Develop New Low Carbon Emitting, Efficient Power Plants and Close the Gap between the Supply and Demand of Electricity**
  - Evaluate State Authorities to Influence Development of Low Carbon Emitting, Efficient Generation to Meet Demand
  - Combined Heat and Power Retail Margin Fund Incentive to Develop 1500 MW of Cogeneration
  - Sales and Use Tax Exemption for Combined Heat and Power (CHP)
  - Consideration of the Need for a New Nuclear Plant in New Jersey
  - Facilitate Siting of Clean Generation Sources
  - For Natural Gas Supply, Assess Future Pipeline Capacity Requirements
- **Invest in Clean Energy Technologies and Businesses**
  - Clean Energy Technology
  - Green Jobs Initiative

# Appendix

## New Jersey Data Center Data Dictionary

# New Jersey Energy Data Center, "Data Dictionary" as of 05/06/08

## Electricity

### Consumption

EIA	Table Title	Units	Time Period	Source	Type
	Form 826 - Monthly Electric Utility Sales and Revenue Data (MWh)	MWh	1990-2007	Form EIA-826 Database Monthly Electric Utility Sales and Revenue Data <a href="http://www.eia.doe.gov/cneaf/electricity/page/eia826.html">http://www.eia.doe.gov/cneaf/electricity/page/eia826.html</a>	Monthly
PJM	Table Title	Units	Time Period	Source	Type
	Historical Load Data, JCPL	MW	1993-2007	Historical Load Data <a href="http://www.pjm.com/services/system-performance/historical.html">http://www.pjm.com/services/system-performance/historical.html</a>	Annual
	Historical Load Data, PJM	MW	1993-2007	Historical Load Data <a href="http://www.pjm.com/services/system-performance/historical.html">http://www.pjm.com/services/system-performance/historical.html</a>	Annual
	Historical Load Data, NJ	MW	1993-2007	Historical Load Data <a href="http://www.pjm.com/services/system-performance/historical.html">http://www.pjm.com/services/system-performance/historical.html</a>	Annual

Utilities	Table Title	Units	Time Period	Source	Type
	Monthly Utility Reports to BPU	# of	2004-2006	Monthly email listserve	Monthly
	Office of NJ State Climatologist (ONJSC) Average cooling days, data from 1971-200	days	1971-2000	<a href="http://climate.rutgers.edu/stateclim_v1/norms/monthly/cdd.html">http://climate.rutgers.edu/stateclim_v1/norms/monthly/cdd.html</a>	
	Office of NJ State Climatologist (ONJSC) Average heating days, data from 1971-201	days	1971-2000	<a href="http://climate.rutgers.edu/stateclim_v1/norms/monthly/hdd.html">http://climate.rutgers.edu/stateclim_v1/norms/monthly/hdd.html</a>	

### Prices

EIA	Table Title	Units	Time Period	Source	Type
	Form 826 - Monthly Electric Utility Sales and Revenue Data (¢/KWh)	¢/KWh	1990-2007	Form EIA-826 Database Monthly Electric Utility Sales and Revenue Data <a href="http://www.eia.doe.gov/cneaf/electricity/page/eia826.html">http://www.eia.doe.gov/cneaf/electricity/page/eia826.html</a>	Monthly

(...continued)

PJM	Table Title	Units	Time Period	Source	Type
	Day Ahead LMP (\$/mw) PJM, 2007	(\$/mw)	2007	Monthly Locational Marginal Pricing <a href="http://www.pjm.com/markets/jsp/Impmonthly.jsp">http://www.pjm.com/markets/jsp/Impmonthly.jsp</a>	Monthly
	Day Ahead LMP (\$/mw) PSEG, 2007	(\$/mw)	2007	Monthly Locational Marginal Pricing <a href="http://www.pjm.com/markets/jsp/Impmonthly.jsp">http://www.pjm.com/markets/jsp/Impmonthly.jsp</a>	Monthly
	Day Ahead LMP (\$/mw) PSEG, pre-2007	(\$/mw)	2000-2007	Monthly Locational Marginal Pricing <a href="http://www.pjm.com/markets/jsp/Impmonthly.jsp">http://www.pjm.com/markets/jsp/Impmonthly.jsp</a>	Monthly
	Day Ahead LMP	(\$/mw)	2000-2007	Monthly Locational Marginal Pricing <a href="http://www.pjm.com/markets/jsp/Impmonthly.jsp">http://www.pjm.com/markets/jsp/Impmonthly.jsp</a>	Monthly
	Day Ahead LMP Zones	(\$/mw)	2000-2007	Monthly Locational Marginal Pricing <a href="http://www.pjm.com/markets/jsp/Impmonthly.jsp">http://www.pjm.com/markets/jsp/Impmonthly.jsp</a>	Monthly
Utilities	Table Title	Units	Time Period	Source	Type
Generation					
EIA	Table Title	Units	Time Period	Source	Type
	Form 860: Existing Electric Generating Units in the United States (NJ data)		2005	Form EIA-860 Database: Annual Electric Generator Report <a href="http://www.eia.doe.gov/cneaf/electricity/page/capacity/capacity.html">http://www.eia.doe.gov/cneaf/electricity/page/capacity/capacity.html</a>	Annual
	Form 860: Electric Generating Unit Additions in the United States (NJ data)		2006	Form EIA-860 Database: Annual Electric Generator Report <a href="http://www.eia.doe.gov/cneaf/electricity/page/capacity/capacity.html">http://www.eia.doe.gov/cneaf/electricity/page/capacity/capacity.html</a>	Annual
	Form 860: New Jersey Generating Units by County (Plant Y)		2001-2005	Annual Electric Generator Report <a href="http://www.eia.doe.gov/cneaf/electricity/page/eia860.html">http://www.eia.doe.gov/cneaf/electricity/page/eia860.html</a>	Annual
	Form 860: New Jersey Generating Units (Gen Y)		2007	Annual Electric Generator Report <a href="http://www.eia.doe.gov/cneaf/electricity/page/eia860.html">http://www.eia.doe.gov/cneaf/electricity/page/eia860.html</a>	Annual

(...continued)

	"1990 - 2005 Net Generation by State by Type of Producer by Energy Source (EIA-906)"		1990-2005	Electric Power Annual 2005 - State Data Tables <a href="http://www.eia.doe.gov/cneaf/electricity/epa/epa_sprdshts.html">http://www.eia.doe.gov/cneaf/electricity/epa/epa_sprdshts.html</a>	Annual	
	"1990 - 2005 Existing Nameplate and Net Summer Capacity by Energy Source, Producer Type and State (EIA-860)"		1989-2005	Electric Power Annual 2005 - State Data Tables <a href="http://www.eia.doe.gov/cneaf/electricity/epa/epa_sprdshts.html">http://www.eia.doe.gov/cneaf/electricity/epa/epa_sprdshts.html</a>	Annual	
	Generator Information			eia.doe.gov		
	In-State, Out-of-State, Onsite Generation		2004	Various EIA Sources	Annual	
	In-State, Out-of-State, Onsite Generation		2005	Various EIA Sources	Annual	
	In-State, Out-of-State, Onsite Generation		2006	Various EIA Sources	Annual	
	PJM	Table Title	Units	Time Period	Source	Type
Transmission						
	PJM	Table Title	Units	Time Period	Source	Type
	FERC	Table Title	Units	Time Period	Source	Type
Emissions						
	EIA	Table Title	Units	Time Period	Source	Type
		Emissions from Energy Consumption for Electricity Production and Useful Thermal Output at Combined-Heat-and-Power Plants		1990-2006	<a href="http://www.eia.doe.gov/cneaf/electricity/epa/epat5p1.html">http://www.eia.doe.gov/cneaf/electricity/epa/epat5p1.html</a>	Annual
	EPA	Table Title	Units	Time Period	Source	Type
	DEP	Table Title	Units	Time Period	Source	Type



(...continued)

Revenues						
EIA	Table Title	Units	Time Period	Source	Type	
	Form 826 - Monthly Electric Utility Sales and Revenue Data (\$000s)	\$000s	1990-2007	Form EIA-826 Database Monthly Electric Utility Sales and Revenue Data <a href="http://www.eia.doe.gov/cneaf/electricity/page/eia826.html">http://www.eia.doe.gov/cneaf/electricity/page/eia826.html</a>	Monthly	
Utilities	Table Title	Units	Time Period	Source	Type	
	Monthly Utility Reports to BPU	K\$	2004-2006	Monthly email listserve	Monthly	
Natural Gas						
Consumption						
EIA	Table Title	Units	Time Period	Source	Type	
	Natural Gas Consumption by End Use (million cubic feet), Annual		1967-2006	Natural Gas Consumption by End Use <a href="http://tonto.eia.doe.gov/dnav/ng/ng_cons_sum_dcu_SNJ_a.htm">http://tonto.eia.doe.gov/dnav/ng/ng_cons_sum_dcu_SNJ_a.htm</a>	Annual	
	Natural Gas Consumption by End Use (million cubic feet), Monthly		1989-2007	Natural Gas Consumption by End Use <a href="http://tonto.eia.doe.gov/dnav/ng/ng_cons_sum_dcu_SNJ_a.htm">http://tonto.eia.doe.gov/dnav/ng/ng_cons_sum_dcu_SNJ_a.htm</a>	Monthly	
Utilities	Table Title	Units	Time Period	Source	Type	
	Monthly Utility Reports to BPU	# of	2004-2006	Monthly email listserve	Monthly	
Prices						
EIA	Table Title	Units	Time Period	Source	Type	
	NJ Sales and Prices		1989-2007	<a href="http://tonto.eia.doe.gov/dnav/ng/ng_pri_sum_dcu_SNJ_m.htm">http://tonto.eia.doe.gov/dnav/ng/ng_pri_sum_dcu_SNJ_m.htm</a>	Monthly	
Utilities	Table Title	Units	Time Period	Source	Type	

(...continued)

T&D Infrastructure						
EIA	Table Title	Units	Time Period	Source	Type	
FERC	Table Title	Units	Time Period	Source	Type	
Emissions						
EIA	Table Title	Units	Time Period	Source	Type	
EPA	Table Title	Units	Time Period	Source	Type	
DEP	Table Title	Units	Time Period	Source	Type	
Revenues						
EIA	Table Title	Units	Time Period	Source	Type	
Utilities	Table Title	Units	Time Period	Source	Type	
	Monthly Utility Reports to BPU	K\$	2004-2006	Monthly email listserve	Monthly	
Petroleum						
Consumption						
EIA	Table Title	Units	Time Period	Source	Type	
Prices						
EIA	Table Title	Units	Time Period	Source	Type	
	Fuel Oil Consumption (Distillate Fuel Oil and Kerosene Sales by End Use) (thousand gallons)	Mgal	1990-2005	Distillate Fuel Oil and Kerosene Sales by End Use <a href="http://tonto.eia.doe.gov/dnav/pet/pet_cons_821use_dcu_SNJ_a.htm">http://tonto.eia.doe.gov/dnav/pet/pet_cons_821use_dcu_SNJ_a.htm</a>	Annual	
	Fuel Oil Prices (cents per gallon excluding taxes)	¢/gal	1990-2007	No. 2 Distillate Prices by Sales Type <a href="http://tonto.eia.doe.gov/dnav/pet/pet_pri_dist_dcu_SNJ_m.htm">http://tonto.eia.doe.gov/dnav/pet/pet_pri_dist_dcu_SNJ_m.htm</a>	Monthly	

(...continued)

	Motor Gasoline Prices (¢/gallon excluding taxes)	¢/gal	1990-2007	Prices, Sales Volume and Stock by State <a href="http://tonto.eia.doe.gov/dnav/pet/pet_cons_prim_dcu_SNJ_m.htm">http://tonto.eia.doe.gov/dnav/pet/pet_cons_prim_dcu_SNJ_m.htm</a>	Monthly
	Motor Gasoline (thousand gallons per day)	kGal/D ay	1990-2007	Prime Supplier Sales Volumes <a href="http://tonto.eia.doe.gov/dnav/pet/pet_cons_prim_dcu_SNJ_m.htm">http://tonto.eia.doe.gov/dnav/pet/pet_cons_prim_dcu_SNJ_m.htm</a>	Monthly
<b>Transportation</b>					
FHWA	Table Title	Units	Time Period	Source	Type
	NJ Vehicle Miles Traveled by Functional System	Millions	1994-2005	NJ Department of Transportation	Annual
DOT	Table Title	Units	Time Period	Source	Type
NJ Transit	Table Title	Units	Time Period	Source	Type
<b>Emissions</b>					
EIA	Table Title	Units	Time Period	Source	Type
EPA	Table Title	Units	Time Period	Source	Type
DEP	Table Title	Units	Time Period	Source	Type
<b>Revenues</b>					
EIA	Table Title	Units	Time Period	Source	Type
Utilities	Table Title	Units	Time Period	Source	Type

(...continued)

EE & RE					
EIA	Table Title	Units	Time Period	Source	Type
CEP	Table Title	Units	Time Period	Source	Type
	NJ Comfort Partner, Income Eligibility for Energy Efficiency Aid	\$	2007	Comfort Partners <a href="http://njcleanenergy.com/residential/programs/comfort-partners/comfort-partners">http://njcleanenergy.com/residential/programs/comfort-partners/comfort-partners</a>	Annual
	NJ Clean Energy Program, Lifetime Energy Savings and Renewable Energy Generation, 2001-2005	MWh, Dtherms	2001-2005	New Clean Energy Program	Annual
	NJ Clean Energy Program, Annual Energy Savings and Renewable Energy Generation, 2001-2005	MWh, KW, Dtherms	2001-2005	New Clean Energy Program	Annual
	Residential ENERGY STAR Products Program Results	MWh	2003-2005	New Clean Energy Program	Annual
	NJ Clean Energy Program, Expenditures (\$000s)	\$000s	2001-2005	New Clean Energy Program	Annual
	Appliance Cycling Program Results	\$000s, MW	2001-2005	New Clean Energy Program	Annual
	Cool Cities Program Results	\$000s, MW	2003-2005	New Clean Energy Program	Annual
	SBC Funding Levels	\$	2005-2007	New Clean Energy Program	Monthly
	Emission Savings 2001-05		2001-2005	New Clean Energy Program	Annual
DEP	Table Title	Units	Time Period	Source	Type
DOT	Table Title	Units	Time Period	Source	Type

(...continued)

FHWA	Table Title	Units	Time Period	Source	Type
DCA	Table Title	Units	Time Period	Source	Type
RU	Table Title	Units	Time Period	Source	Type
	Biomass Amounts in County	dry tons, Mwh/yr	2007	The New Jersey BioEnergy Calculator and BioEnergy Resource Database	
	Electricity Production Potential in each County	Mwh/yr	2007	The New Jersey BioEnergy Calculator and BioEnergy Resource Database	
	Current Gross Quantity (dry tons) in each County	dry tons	2007	The New Jersey BioEnergy Calculator and BioEnergy Resource Database	
	Net Usable Quantity (dry tons) in each County	dry tons	2007	The New Jersey BioEnergy Calculator and BioEnergy Resource Database	
Treasury	Table Title	Units	Time Period	Source	Type
Econ/Demographic					
Census	Table Title	Units	Time Period	Source	Type
	NJ County Housing Unit Structures by Type	units	2006	<a href="http://factfinder.census.gov/servlet/ADPGeoSearchByListServlet?ds_name=ACS_2006_EST_G00_&amp;_lang=en&amp;_ts=213538662598">http://factfinder.census.gov/servlet/ADPGeoSearchByListServlet?ds_name=ACS_2006_EST_G00_&amp;_lang=en&amp;_ts=213538662598</a>	Annual
	NJ County Housing Units Year Built	units	2006	<a href="http://factfinder.census.gov/servlet/ADPGeoSearchByListServlet?ds_name=ACS_2006_EST_G00_&amp;_lang=en&amp;_ts=213538662598">http://factfinder.census.gov/servlet/ADPGeoSearchByListServlet?ds_name=ACS_2006_EST_G00_&amp;_lang=en&amp;_ts=213538662598</a>	Annual
	NJ County Bedrooms per Residential Unit	units	2006	<a href="http://factfinder.census.gov/servlet/ADPGeoSearchByListServlet?ds_name=ACS_2006_EST_G00_&amp;_lang=en&amp;_ts=213538662598">http://factfinder.census.gov/servlet/ADPGeoSearchByListServlet?ds_name=ACS_2006_EST_G00_&amp;_lang=en&amp;_ts=213538662598</a>	Annual
	NJ County Available Vehicles per Household	units	2006	<a href="http://factfinder.census.gov/servlet/ADPGeoSearchByListServlet?ds_name=ACS_2006_EST_G00_&amp;_lang=en&amp;_ts=213538662598">http://factfinder.census.gov/servlet/ADPGeoSearchByListServlet?ds_name=ACS_2006_EST_G00_&amp;_lang=en&amp;_ts=213538662598</a>	Annual

(...continued)

	NJ County Heating Fuel Type by Housing Units	units	2006	<a href="http://factfinder.census.gov/servlet/ADPGeoSearchByListServlet?ds_name=ACS_2006_EST_G00_&amp;lang=en&amp;ts=213538662598">http://factfinder.census.gov/servlet/ADPGeoSearchByListServlet?ds_name=ACS_2006_EST_G00_&amp;lang=en&amp;ts=213538662598</a>	Annual
	NJ Towns Utilities included in rent	units	2000	<a href="http://factfinder.census.gov/servlet/ADPGeoSearchByListServlet?ds_name=ACS_2006_EST_G00_&amp;lang=en&amp;ts=213538662598">http://factfinder.census.gov/servlet/ADPGeoSearchByListServlet?ds_name=ACS_2006_EST_G00_&amp;lang=en&amp;ts=213538662598</a>	Annual
	NJ Towns Housing Units Year Built	units	2000	<a href="http://factfinder.census.gov/servlet/ADPGeoSearchByListServlet?ds_name=ACS_2006_EST_G00_&amp;lang=en&amp;ts=213538662598">http://factfinder.census.gov/servlet/ADPGeoSearchByListServlet?ds_name=ACS_2006_EST_G00_&amp;lang=en&amp;ts=213538662598</a>	Annual
	NJ Towns Housing Units Structures by Type	units	2000	<a href="http://factfinder.census.gov/servlet/ADPGeoSearchByListServlet?ds_name=ACS_2006_EST_G00_&amp;lang=en&amp;ts=213538662598">http://factfinder.census.gov/servlet/ADPGeoSearchByListServlet?ds_name=ACS_2006_EST_G00_&amp;lang=en&amp;ts=213538662598</a>	Annual
	NJ Towns Heating Fuel Type by Housing Units	units	2000	<a href="http://factfinder.census.gov/servlet/ADPGeoSearchByListServlet?ds_name=ACS_2006_EST_G00_&amp;lang=en&amp;ts=213538662598">http://factfinder.census.gov/servlet/ADPGeoSearchByListServlet?ds_name=ACS_2006_EST_G00_&amp;lang=en&amp;ts=213538662598</a>	Annual
BEA	Table Title	Units	Time Period	Source	Type
BLS	Table Title	Units	Time Period	Source	Type
	NJ Employees by Industry	ee	1990-2007		Monthly
NAR	Table Title	Units	Time Period	Source	Type
Other State Tables					
California	Table Title	Units	Time Period	Source	Type
	CA Employees by Industry	#	1990-2007		Monthly
				<a href="http://bea.gov/regional/definitions/nextpage.cfm?key=Gross%20Domestic%20Product%20by%20State%20%28millions%20of%20current%20dollars%29">http://bea.gov/regional/definitions/nextpage.cfm?key=Gross%20Domestic%20Product%20by%20State%20%28millions%20of%20current%20dollars%29</a>	Annual
					Monthly
	Natural Gas Consumption by end use				Monthly

## EIA Data Sets for EMP Projections

Sector	Residential	Commercial	Industrial
Electricity	Annual Electric Power Industry Database (Form EIA-861): <a href="http://www.eia.doe.gov/cneaf/electricity/page/eia861.html">http://www.eia.doe.gov/cneaf/electricity/page/eia861.html</a> Annual Electric Power Industry Database (Form EIA-906/920): <a href="http://www.eia.doe.gov/cneaf/electricity/page/eia906_920.html">http://www.eia.doe.gov/cneaf/electricity/page/eia906_920.html</a> Annual Electric Power Industry Database (Form EIA-860): <a href="http://www.eia.doe.gov/cneaf/electricity/page/eia860.html">http://www.eia.doe.gov/cneaf/electricity/page/eia860.html</a> Monthly Electric Utility Database (Form EIA-826): <a href="http://www.eia.doe.gov/cneaf/electricity/page/eia826.html">http://www.eia.doe.gov/cneaf/electricity/page/eia826.html</a>		
Natural Gas	EIA, Natural Gas Consumption by End Use: <a href="http://tonto.eia.doe.gov/dnav/ng/ng_cons_sum_dcu_SNJ_a.htm">http://tonto.eia.doe.gov/dnav/ng/ng_cons_sum_dcu_SNJ_a.htm</a>		
<b>Fuel Oil:</b>  No. 2 Distillate	Adjusted Sales of Distillate Fuel Oil by End Use: <a href="http://tonto.eia.doe.gov/dnav/pet/pet_cons_821dsta_dcu_SNJ_a.htm">http://tonto.eia.doe.gov/dnav/pet/pet_cons_821dsta_dcu_SNJ_a.htm</a> Sales of Distillate Fuel Oil by End Use: <a href="http://tonto.eia.doe.gov/dnav/pet/pet_cons_821dst_dcu_SNJ_a.htm">http://tonto.eia.doe.gov/dnav/pet/pet_cons_821dst_dcu_SNJ_a.htm</a> "State Energy Profiles: <a href="http://www.eia.doe.gov/emeu/states/state.html?q_state_a=nj&amp;q_state=NEW%20JERSEY">http://www.eia.doe.gov/emeu/states/state.html?q_state_a=nj&amp;q_state=NEW%20JERSEY</a>		
Residual	n/a  n/a  n/a	Adjusted Sales of Residual Fuel Oil by End Use: <a href="http://tonto.eia.doe.gov/dnav/pet/pet_cons_821rsda_dcu_SNJ_a.htm">http://tonto.eia.doe.gov/dnav/pet/pet_cons_821rsda_dcu_SNJ_a.htm</a>  Sales of Residual Fuel Oil by End Use: <a href="http://tonto.eia.doe.gov/dnav/pet/pet_cons_821rsd_dcu_SNJ_a.htm">http://tonto.eia.doe.gov/dnav/pet/pet_cons_821rsd_dcu_SNJ_a.htm</a>  EIA, "State Energy Profiles: <a href="http://www.eia.doe.gov/emeu/states/state.html?q_state_a=nj&amp;q_state=NEW%20JERSEY">http://www.eia.doe.gov/emeu/states/state.html?q_state_a=nj&amp;q_state=NEW%20JERSEY</a>	
Kerosene	Adjusted Sales of Kerosene by End Use: <a href="http://tonto.eia.doe.gov/dnav/pet/pet_cons_821kera_dcu_SNJ_a.htm">http://tonto.eia.doe.gov/dnav/pet/pet_cons_821kera_dcu_SNJ_a.htm</a> Sales of Kerosene by End Use: <a href="http://tonto.eia.doe.gov/dnav/pet/pet_cons_821ker_dcu_SNJ_a.htm">http://tonto.eia.doe.gov/dnav/pet/pet_cons_821ker_dcu_SNJ_a.htm</a> "State Energy Profiles: <a href="http://www.eia.doe.gov/emeu/states/state.html?q_state_a=nj&amp;q_state=NEW%20JERSEY">http://www.eia.doe.gov/emeu/states/state.html?q_state_a=nj&amp;q_state=NEW%20JERSEY</a>		
Propane	Petroleum, Prime Supplier Sales Volumes: <a href="http://tonto.eia.doe.gov/dnav/pet/pet_cons_prim_dcu_SNJ_a.htm">http://tonto.eia.doe.gov/dnav/pet/pet_cons_prim_dcu_SNJ_a.htm</a>		