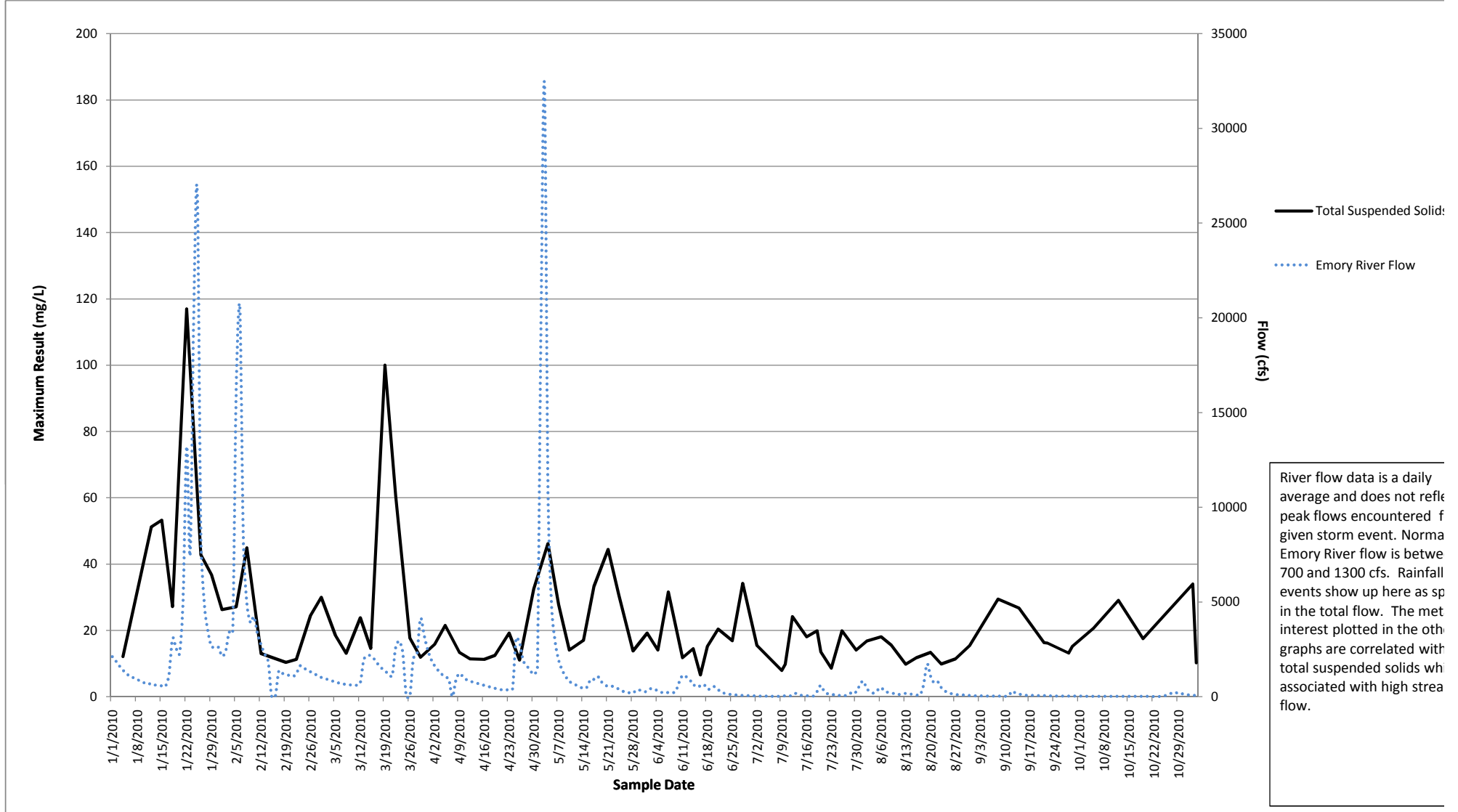
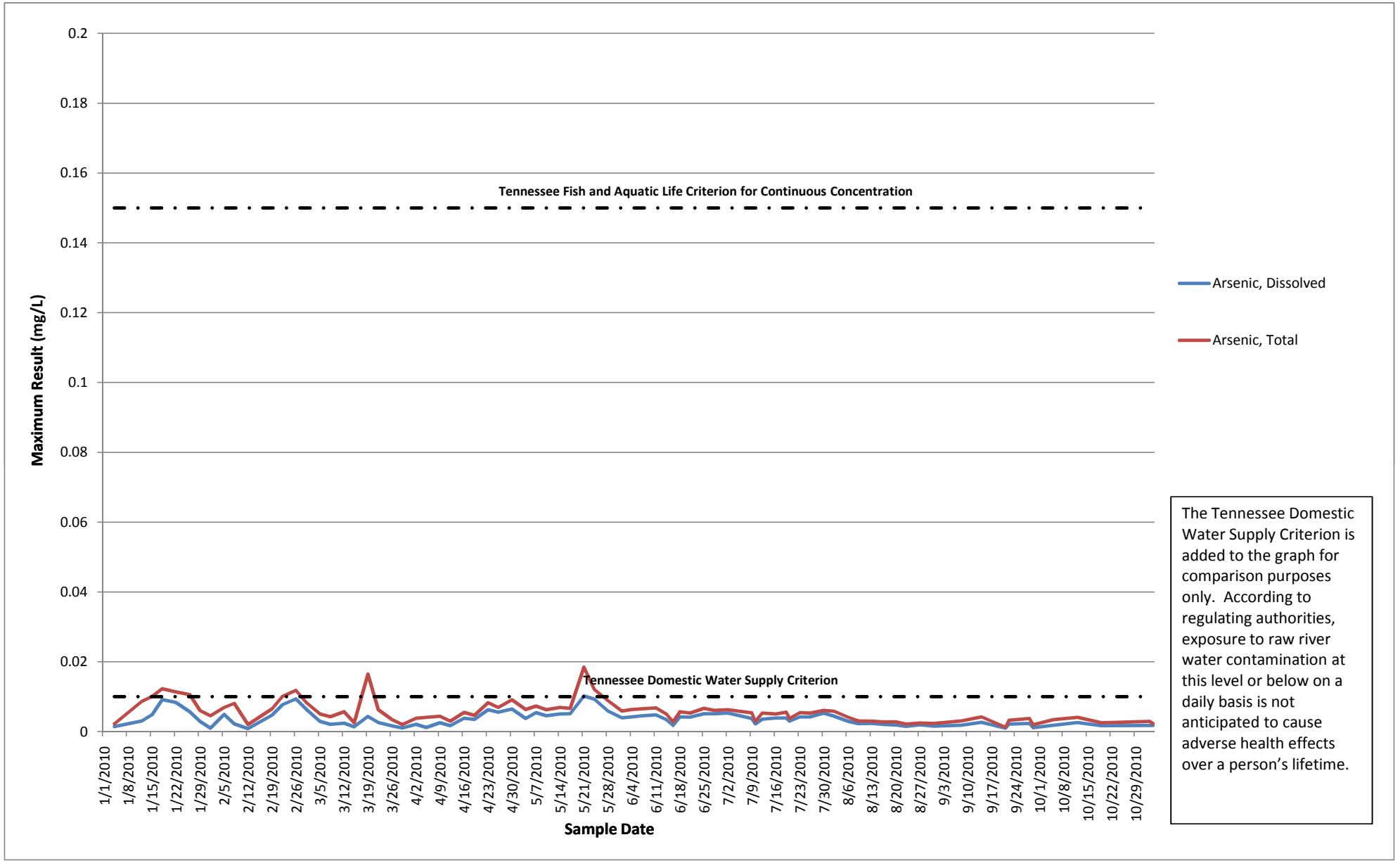


**Figure 1**  
**Total Suspended Solids From all Standard Sampling Locations on the Emory, Clinch, and Tennessee Rivers**  
**TVA - Kingston**



Note: The Result line represents the maximum value reported for Total Suspended Solids From all Standard Sampling Locations on the Emory, Clinch, and Tennessee Rivers for any location for a given day.

**Figure 2**  
**Arsenic From all Standard Sampling Locations on the Emory, Clinch, and Tennessee Rivers**  
**TVA - Kingston**

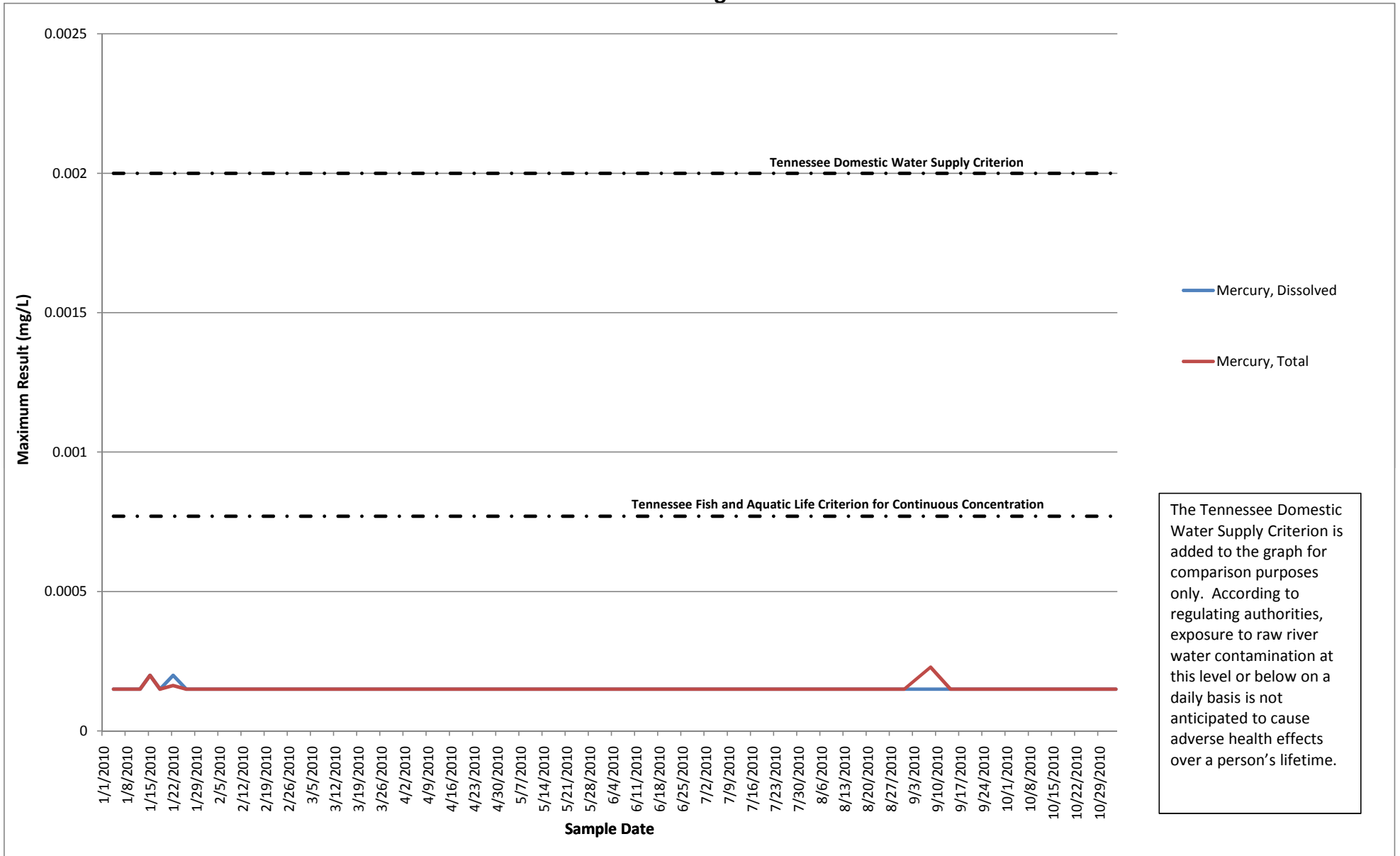


The Tennessee Domestic Water Supply Criterion is added to the graph for comparison purposes only. According to regulating authorities, exposure to raw river water contamination at this level or below on a daily basis is not anticipated to cause adverse health effects over a person's lifetime.

Note: Results are reported at the lowest concentration that laboratory instruments can reliably measure.

Note: The Result line represents the maximum value reported for Arsenic From all Standard Sampling Locations on the Emory, Clinch, and Tennessee Rivers for any location for a given day.

**Figure 3**  
**Mercury From all Standard Sampling Locations on the Emory, Clinch, and Tennessee Rivers**  
**TVA - Kingston**

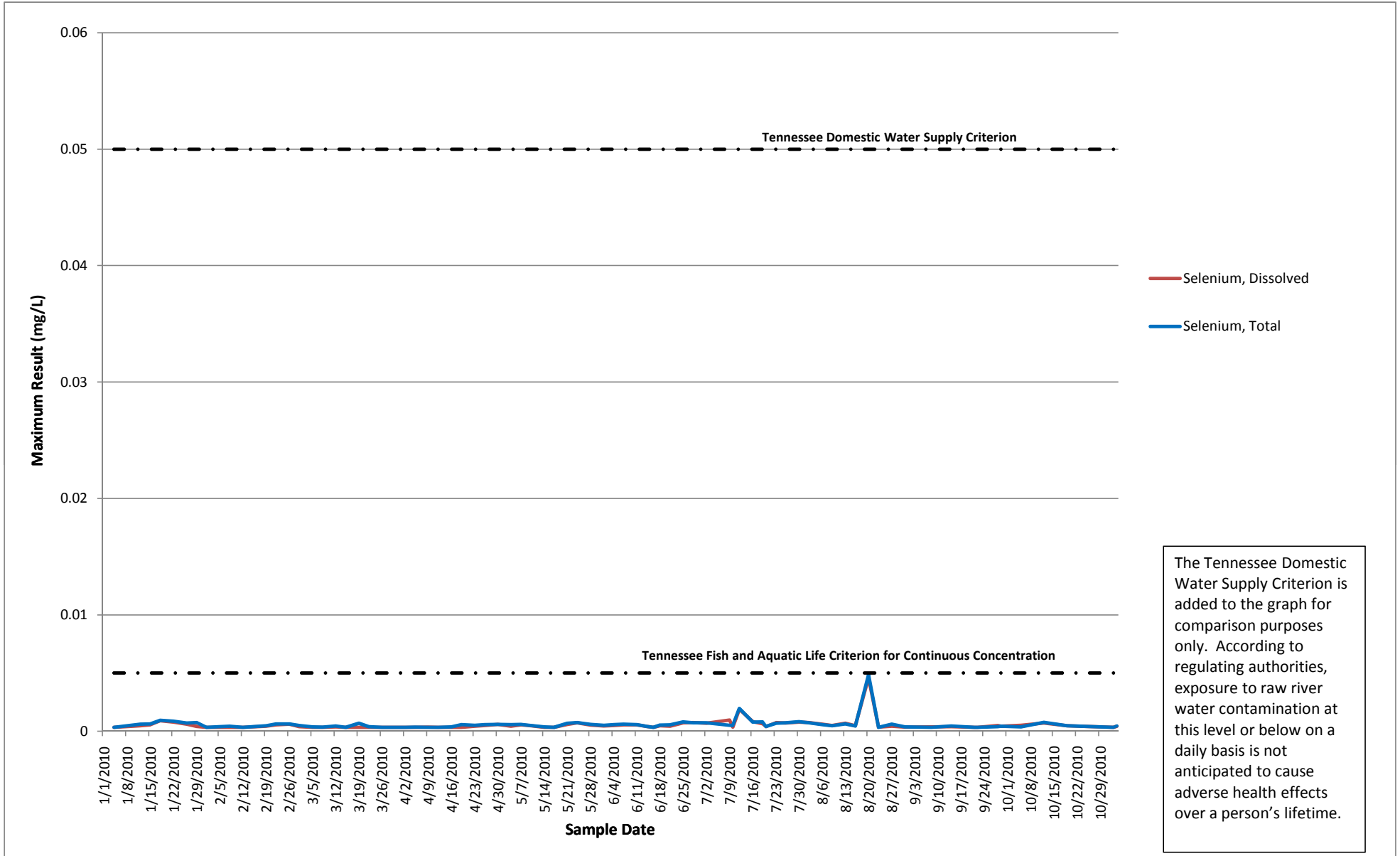


The Tennessee Domestic Water Supply Criterion is added to the graph for comparison purposes only. According to regulating authorities, exposure to raw river water contamination at this level or below on a daily basis is not anticipated to cause adverse health effects over a person's lifetime.

Note: Results are reported at the lowest concentration that laboratory instruments can reliably measure.

Note: The Result line represents the maximum value reported for Mercury From all Standard Sampling Locations on the Emory, Clinch, and Tennessee Rivers for any location for a given day.

**Figure 4**  
**Selenium From all Standard Sampling Locations on the Emory, Clinch, and Tennessee Rivers**  
**TVA - Kingston**



Note: Results are reported at the lowest concentration that laboratory instruments can reliably measure.

Note: The Result line represents the maximum value reported for Selenium From all Standard Sampling Locations on the Emory, Clinch, and Tennessee Rivers for any location for a given day.

The Tennessee Domestic Water Supply Criterion is added to the graph for comparison purposes only. According to regulating authorities, exposure to raw river water contamination at this level or below on a daily basis is not anticipated to cause adverse health effects over a person's lifetime.