



Generic Instructions for H323 Connections with the ECS Gatekeeper

Quick Start Guide

- From your computer open <http://evo.caltech.edu>
- Login using your account or dedicated room account

Before joining a meeting select Koala, then Preferences in the pull down menu.

Select the Local A/V Client tab.

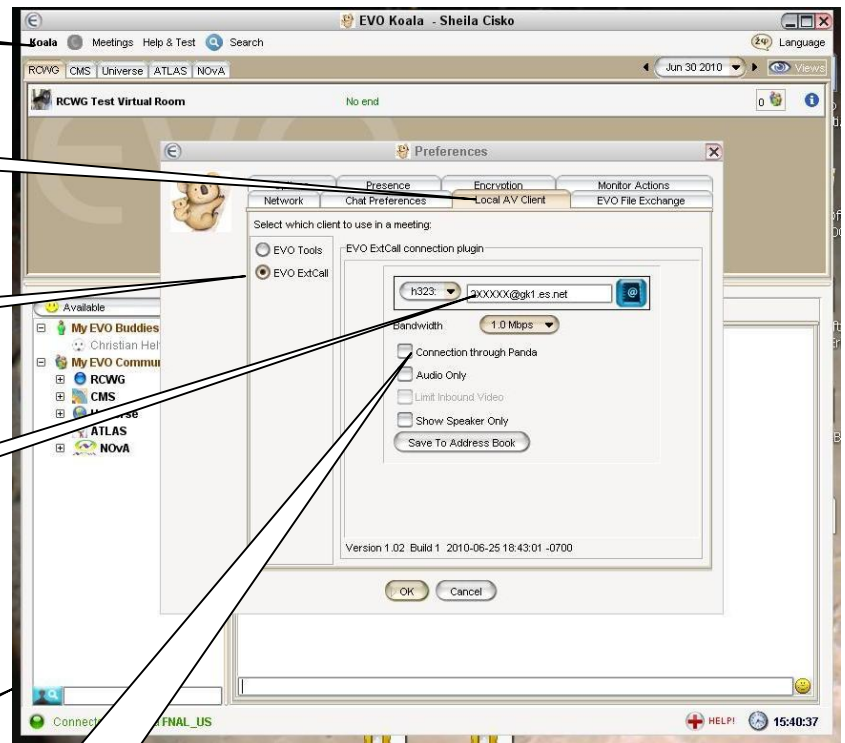
Select EVO ExtCall button.

Replace 2XXXXX with your E164# @gk1.es.net

Use this page as a guide. You may have to lower the Bandwidth setting from the default (1Mbps).

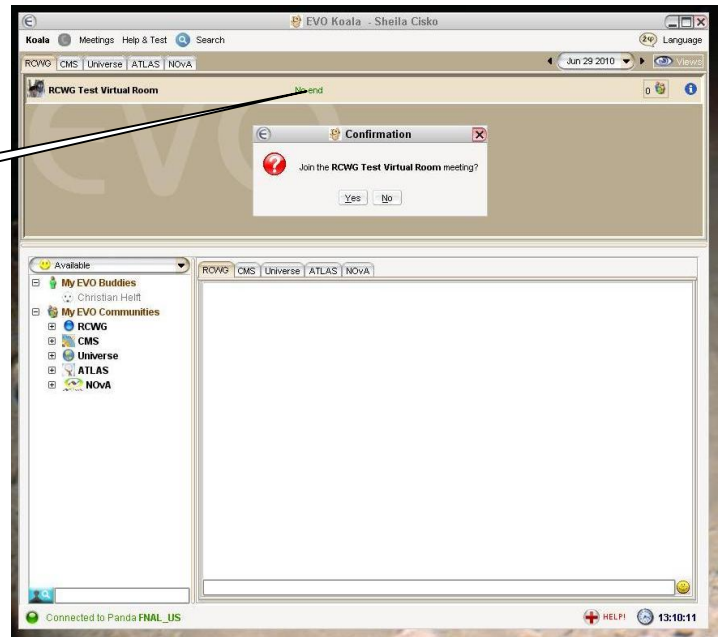
If your PC is wireless or a low end machine you may want to select "Connect through Panda".

Note: there may be firewall issues and other limitations using this method.



- Find your meeting in a community you're subscribed to or from a provided URL.

Click to join



- Meeting view

Reconnect

Meeting participants

Watch all videos or only speaker

Record meeting

Chat window

Leave meeting

