

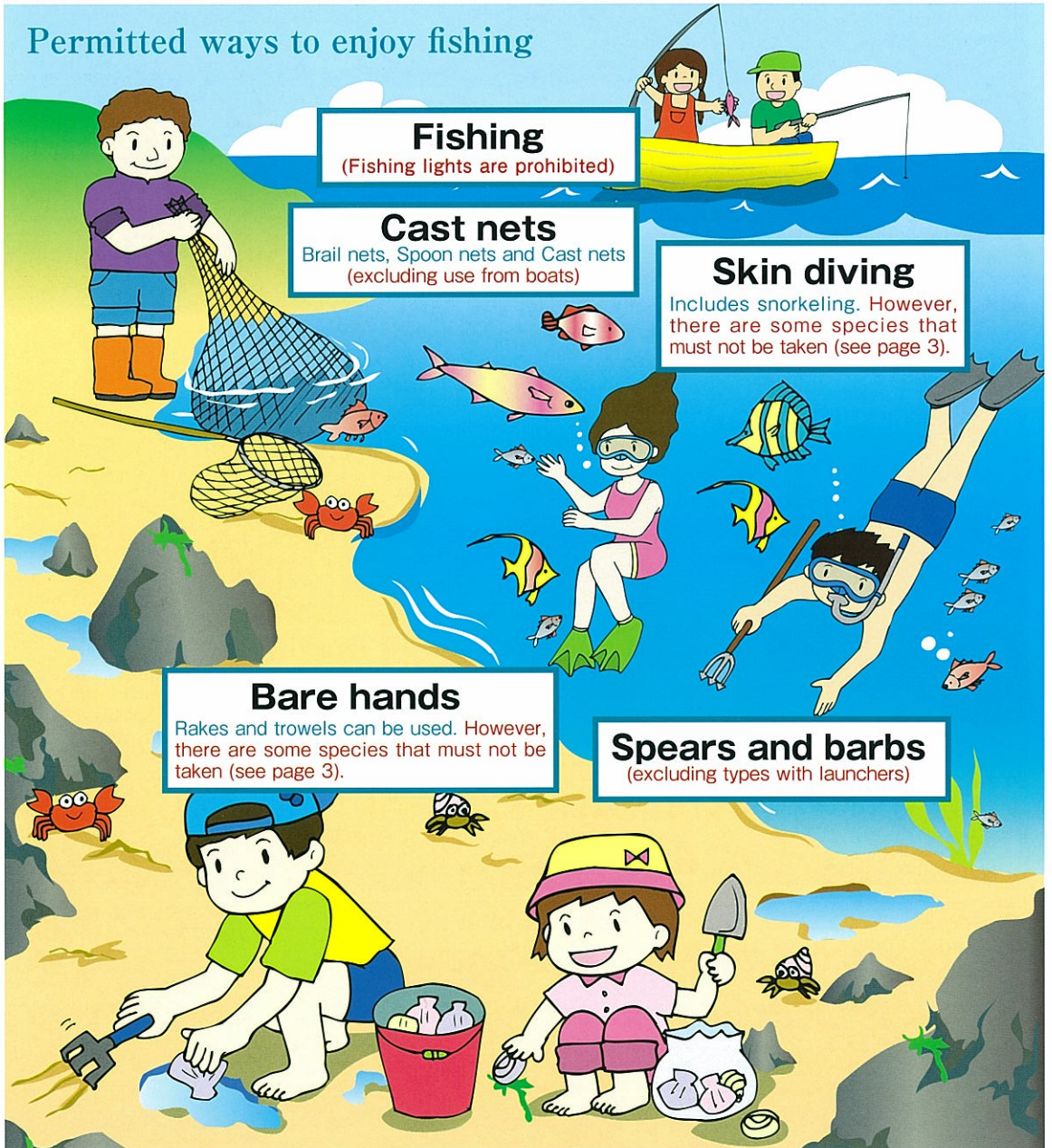
For everybody who enjoys the **Sea**

Rules and Manners of Pleasure Fishing

Fishing and playing on the beach relieve the stress of our busy daily lives and give us the energy for tomorrow. But at the same time, the sea is also the place where commercial fishermen work to provide us with marine products, an important food source.

If we can respect each other as amateur and commercial fishermen, together obeying the rules of fishing and showing good fishing manners, then the bounty of the sea will always be there for us to use and enjoy.

Permitted ways to enjoy fishing



Fishing
(Fishing lights are prohibited)

Cast nets
Brail nets, Spoon nets and Cast nets
(excluding use from boats)

Skin diving
Includes snorkeling. However,
there are some species that
must not be taken (see page 3).

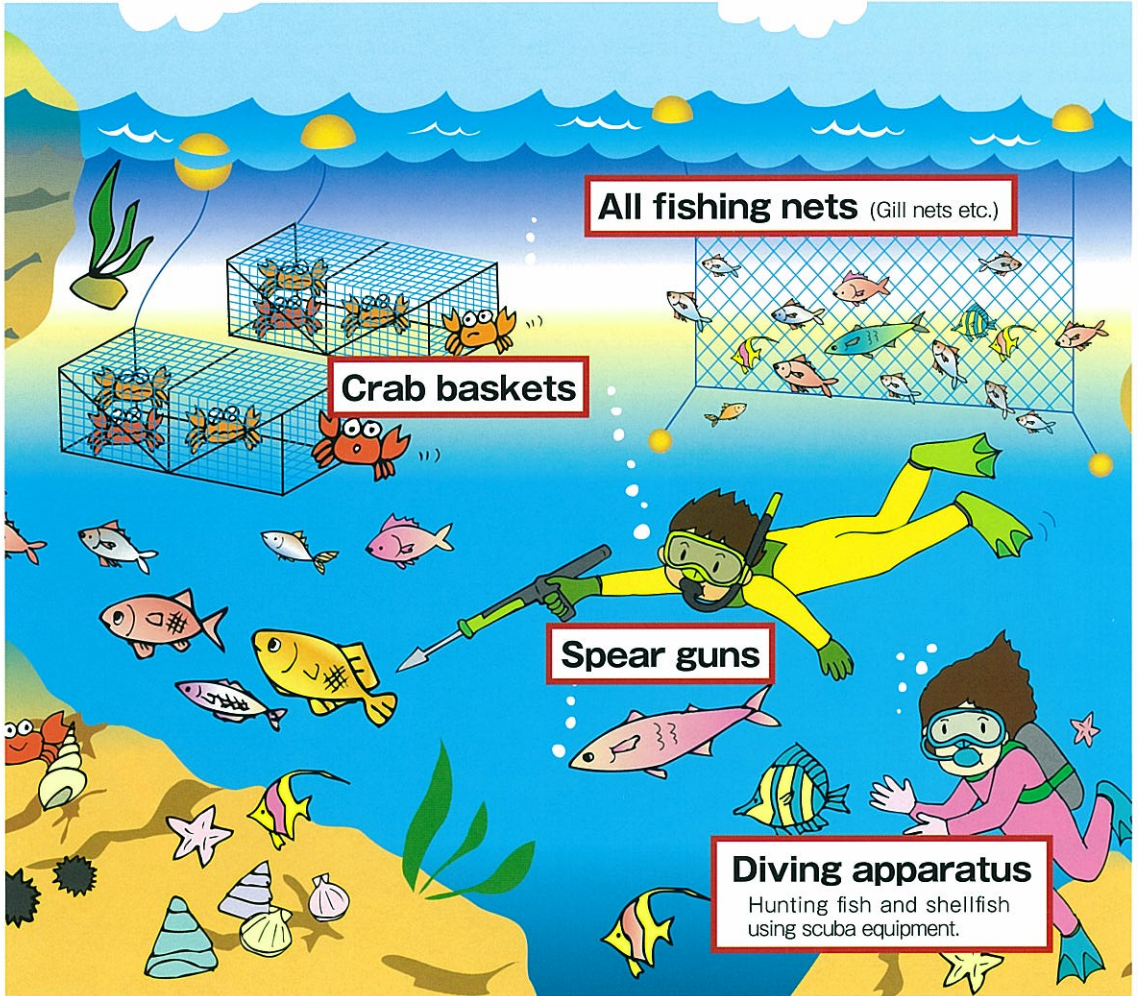
Bare hands
Rakes and trowels can be used. However,
there are some species that must not be
taken (see page 3).

Spears and barbs
(excluding types with launchers)

Please avoid obstructing the work of commercial fishermen.



These items must not be used by the **general public**.



⊗ These species must not be taken by the **general public** or **commercial fishermen**.

Reef-building corals



Sea turtles and their eggs



These important resources are protected by law!

Failing to observe rules concerning equipment that must not be used, and fauna and flora that must not be taken is an infringement of Japan Fisheries Law, and may be subject to a maximum penalty of a fine of 2 million yen or 3 years in prison.

Do not take these species.

Commercial fishermen use their fishing rights to provide us with marine products. If you take these species and impede commercial fishermen, you may be sued for infringing their fishing rights, and could be liable for fines up to 200,000 yen.

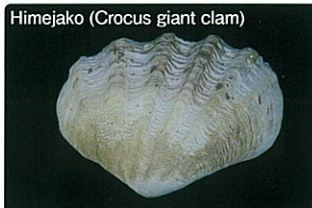
Ise ebi
(Japanese Spiny Lobsters)



Hirosegai
(Green Top)



Shakogai
(Giant Clams)



Yakougai
(Great Green Turban)



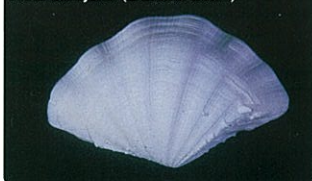
Sazae
(Silver-mouth Turban)



Hirejako (FILLED clam)



Hirenashijako (Derasa Clam)



Takasegai
(Commercial trochus)



Hitoegusa
(Sea-lettuce)



Shagou (Strawberry clam)



Shirahige uni
(Hawaiian sea urchin)



Hijiki
(Hijikia seaweed)



Shiranami (Elongate Giant Clam)



Other species include mozuku (*Cladosiphon okamuranus*) and ogonori (*Gracilaria vermiculophylla*) etc.

These species are important marine resources and the following rules apply even to commercial fishing.

Prohibitions in the Okinawa Prefecture Fisheries Regulations

Closed season

Shakogai (Giant clams) (June 1 - August 31) Ise ebi (Japanese Spiny Lobsters) (April 1~June 30)

Prohibited sizes

Japanese Spiny Lobsters (length: Up to 18 cm), Crocus giant clam (shell length: Up to 8 cm), Strawberry clam(shell length: Up to 15 cm), Filled clam (shell length: Up to 20 cm), Derasa Clam (shell length: Up to 30 cm), Silver-mouth Turban (opening: Up to 3 cm), Great Green Turban (opening: Up to 6 cm), Commercial trochus (minor axis of shell: Up to 6 cm), Green Top (minor axis of shell: Up to 6 cm), Black-lip Oyster (shell height: Up to 10 cm), Black-winged pearl oyster (shell height: Up to 10 cm), Erabu black-banded sea krait (length: Up to 60 cm), Eel (length: Up to 10 cm)

Failing to observe these rules is an infringement of Japan Fisheries Law, and may be subject to a maximum penalty of a fine of 100,000 yen and 6 months in prison.

Fishing Rights

Fishing rights are the right to gather and cultivate specific types of marine animals and plants, by specific methods (fishing equipment and techniques), in a specific area (fishery). These rights are obtained by fishery cooperatives and similar organizations.

Common Fishing Right

Giant Clams fisheries, Japanese Spiny Lobsters fisheries, gill net fisheries etc.

The right of commercial fishermen in a specific region to use a specific area in common to operate a fishery (in Okinawa Prefecture this applies to all coastal areas).

Demarcated Fishing Right

Mozuku sea weed aquaculture, Kuruma ebi aquaculture etc.

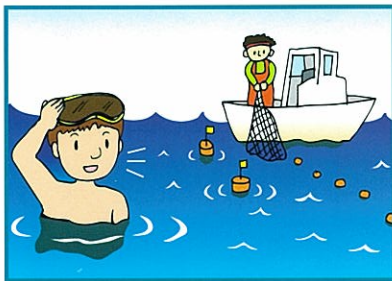
The right to cultivate marine techniques in a specific area.

Fixed Net Fishing Right

Large fixed net fisheries.

The right to operate a fixed net fishery in locations with a sea depth of 15 m or more.

Please follow good sea manners.



When enjoying personal water craft, diving, and fishing, stay away from fishing vessels, commercial fishermen, fixed nets and aquaculture rafts.



Do not throw unused bait, fishing tackle, empty cans, plastic bags and other rubbish into the sea. Please dispose of it properly.

Please be aware that fish and shellfish are limited resources, and avoid taking more than necessary.