



Before Shots

Dilapidated table shelters with dangerous overhanging masonry and wood structure





Toilet building in disrepair with the roof structure collapsing

Before Shots



Numerous table shelters in various stages of failure

Before Shots



Table shelter damaged by fire and vandalism



Some shelters were completely collapsed with scattered debris



Vandalized restroom

Before Shots

Photos on this page taken from
Abandoned Oklahoma,
<http://www.AbandonedOK.com/optima-lake-state-park/>





Collapsed table shelter with dangerous hanging masonry

Before Shots

Photos on this page taken from
Abandoned Oklahoma,
<http://www.AbandonedOK.com/optima-lake-state-park/>



Dilapidated toilet buildings in various states of failure

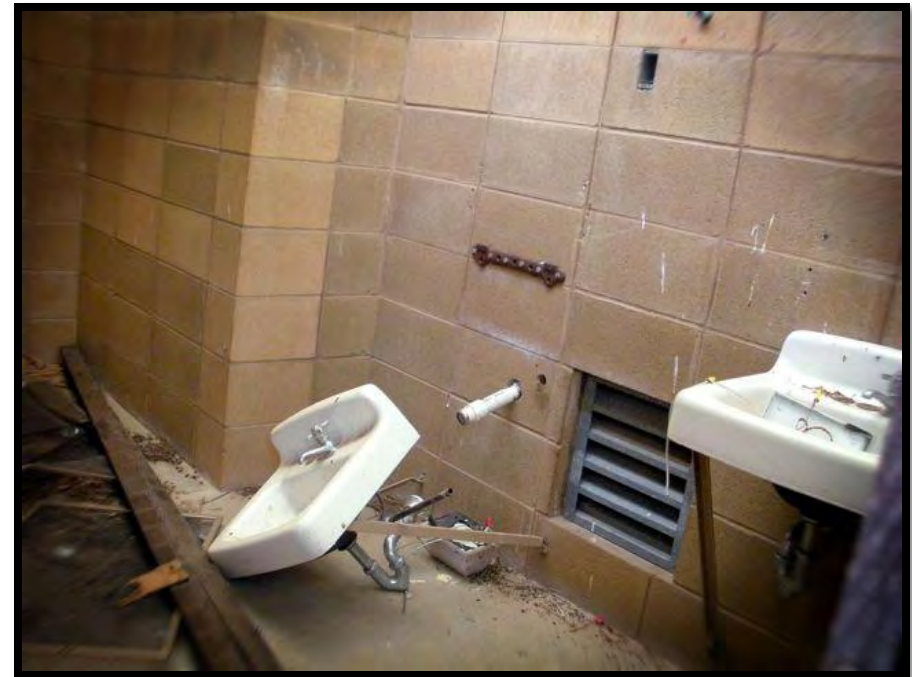


Topped canopy

Before Shots

Photos on this page taken from
Abandoned Oklahoma,
<http://www.AbandonedOK.com/optima-lake-state-park/>

Failed table shelter and vandalized toilet buildings with
failing roof structures considered unsafe for public use



Vandalized restroom



Canopy falling down

Before Shots

Photos on this page taken from
Abandoned Oklahoma,
<http://www.AbandonedOK.com/optima-lake-state-park/>



Failing fire pit facility at location of group shelter



Closeup of campsite pad



Busted utility table

Before Shots

Photos on this page taken from
Abandoned Oklahoma,
<http://www.AbandonedOK.com/optima-lake-state-park/>

Failed table shelters typical throughout the campgrounds



Before



Same site after



Failing dangerous overhead canopy and wall of table shelter removed with the table left in place for public use

Before



Same site after



Failing and structurally unsafe toilet buildings were removed to ground level to alleviate overhead hazards and unsafe conditions.

Before

After



Failed table shelter and broken table removed with the concrete pad left in place



After Shots



Safe picnic tables in good repair left in place for public use

After Shots



Vandalized overlook building with dangerous broken over hanging concrete and masonry structure was removed.

Remaining slab after demolition of unsafe Overlook building