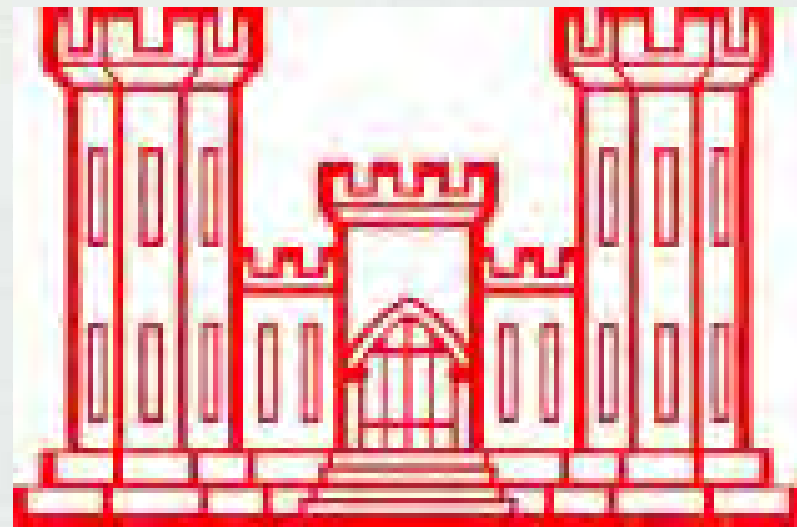


# Welcome!!!

Your participation is essential!

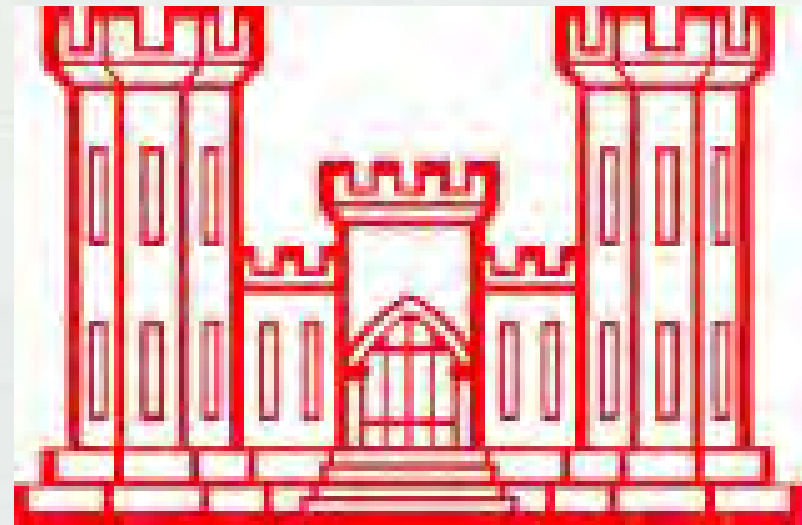


Encourage other interested parties to participate in the process!



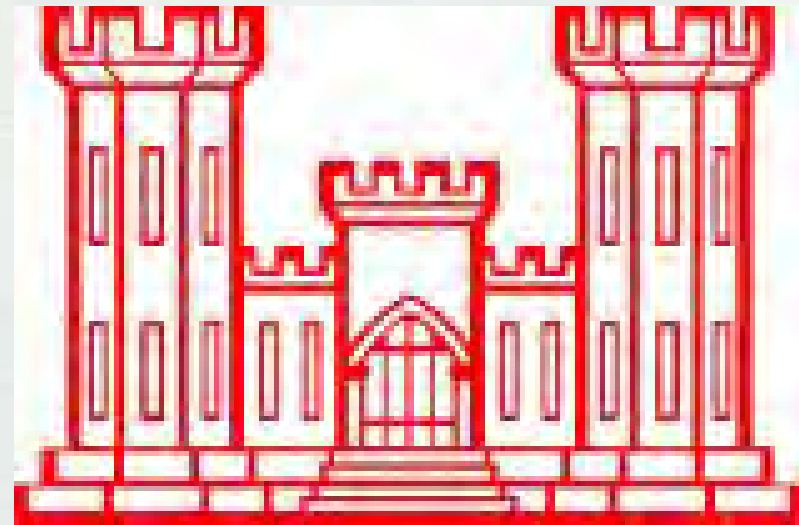
# Public Workshop

Your participation is essential!



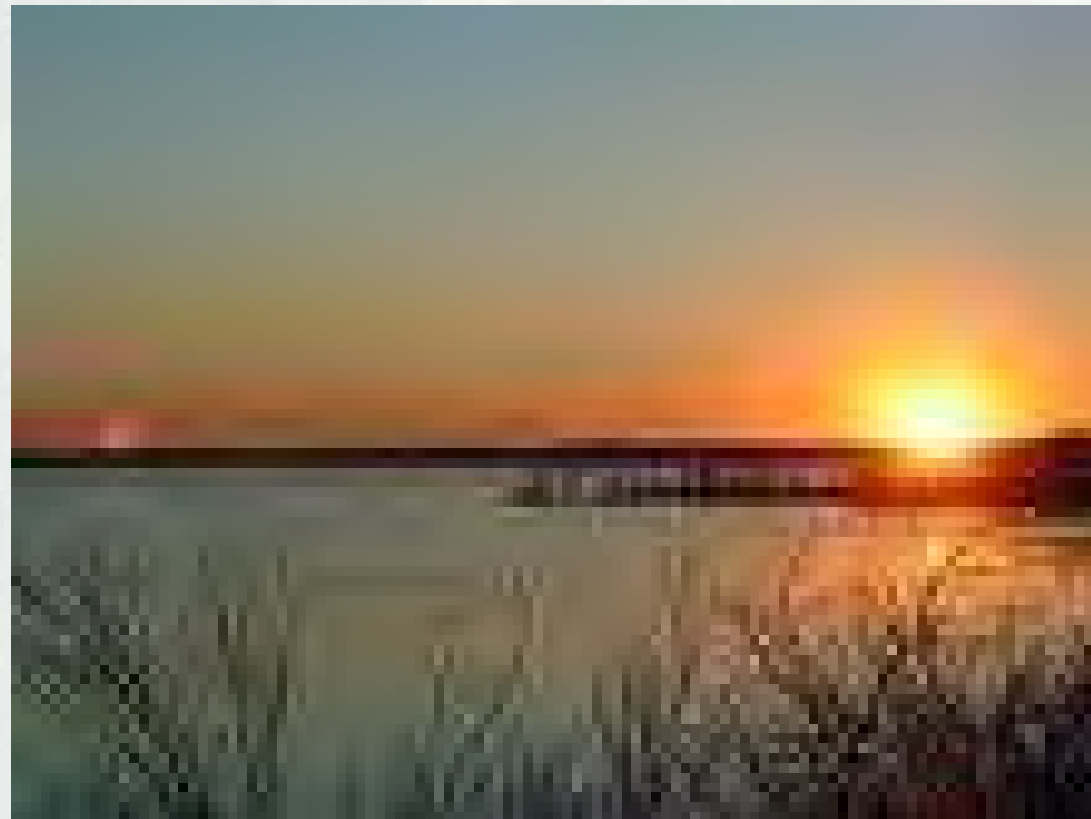
# Public Workshop

Your participation is essential!



# Eufaula Lake, Environmental Impact Statement

## Public Workshop



Hosted by:  
U.S. Army Corps of Engineers  
Tulsa District



BUILDING STRONG®

# Public Involvement



---

**BUILDING STRONG®**

# Open House

- Open house/come and go
- Overall purpose: **Listening**
- No set formal presentations



# Open House

- Facilitates and encourages participation in the study from:
  - Interested stakeholders
  - Federal, State, local government agencies
  - Native American tribes
- Provides team approach to:
  - Determine project issues and concerns
  - Develop proposed alternatives and measures
- Allows attendees to express their views and concerns

Format of today's workshop



# Open House

- Informs stakeholders of study process and next steps
- Solicit comments and questions with respect to environmental conditions and concerns to be addressed during the development of an Environmental Impact Statement (EIS)
- Presentation Stations
  - ▶ Display materials, hand-outs, technical experts
- Verbal questions and comments addressed on one-on-one basis at presentation stations





# Questions and Comments

- Comment or question forms available here, or...
- Take a sheet home and complete it at your convenience
- Postage-paid envelopes available
- Comments accepted throughout NEPA process
  - ▶ Comments received through August 2, 2011 will be summarized in a scoping report and used to focus EIS efforts. However, comments will continue to be accepted throughout the NEPA process.



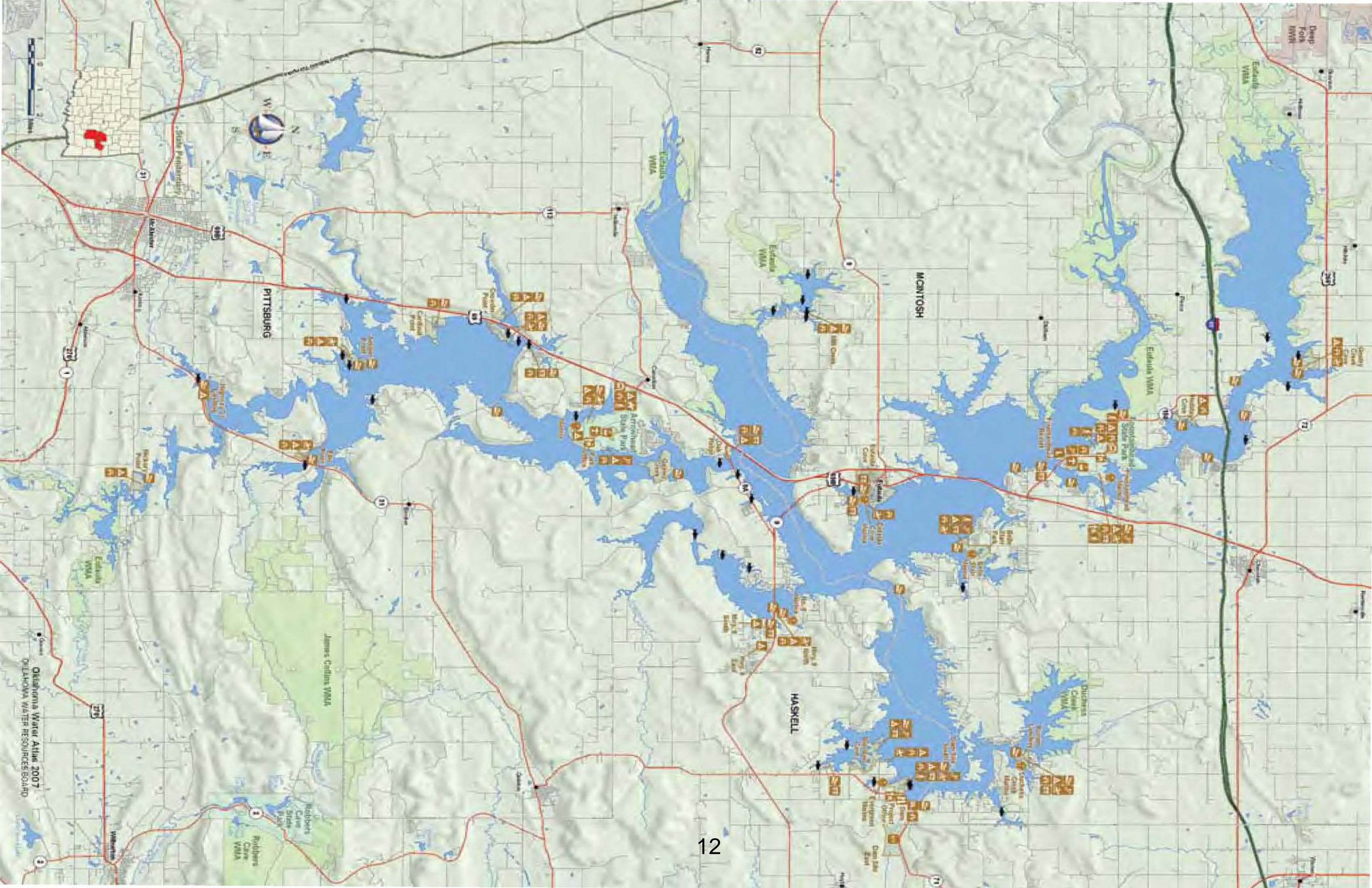
# Mailing List

- List to keep people informed of future events and availability of documents
  - ▶ The list will **NOT** be used for any other purpose
- Sign-in sheet at welcome table will be used for the mailing list
- If you do not want to be included on the mailing list, please check the “**NO**” box



# Overview

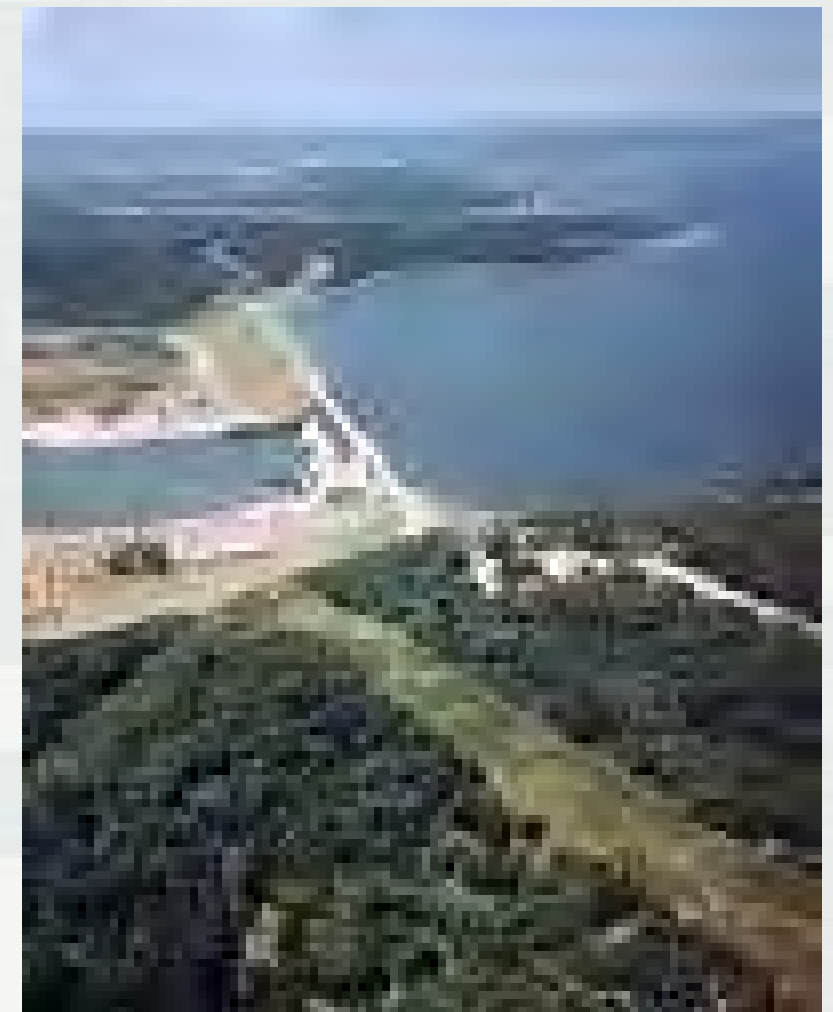




# Overview

- Eufaula Lake characteristics:
  - ▶ Eufaula Lake is located on the Canadian river, 27 miles upstream from its confluence with the Arkansas River. The dam is 12 miles east of the city of Eufaula.
  - ▶ Major tributaries include the North and South Canadian Rivers, the Deep Fork River, Duchess, Longtown and Gaines Creeks.

Eufaula Lake Dam site



# Overview

- Eufaula Lake Characteristics (continued)
  - ▶ Construction began in December of 1956 and was completed in February of 1964. It is operated by the United States Army Corps of Engineers (USACE) for the purposes of flood control, water supply, hydroelectric power, navigation and recreation.
  - ▶ It has over 600 miles of shoreline ranging from large areas of sandy beach to rocky bluffs.



# Overview

- Recreation was added as a project purpose by the Water Resource Development Act (WRDA) of 2007.
  - ▶ While recreation was given project purpose status it was never given capacity.
  - ▶ Capacity remains: conservation pool, water supply contract, hydropower contracts, and flood control storage.

Pertinent Data Table

Feature	Elevation (feet)	Area (acres)	Capacity (acre-feet)
Top of Dam	612.0	-	-
Maximum Pool	604.96	-	-
Top of Gates and Flood Control Pool	597.0	147,500	3,825,400
Flood Control Storage	585.0-597.0	-	1,510,800
Top of Power Pool	585.0	105,500	2,314,600
Power Storage	565.0-585.0	-	1,463,000 <sup>(2)</sup>
Bottom of Power Pool and Spillway Crest	565.0	46,100	851,600



# Overview

- Updates to the Shoreline Management Plan (SMP) are periodically provided.
  - ▶ The last update to the Eufaula Lake SMP occurred in 1998.
  - ▶ In accordance with Engineer Regulation 1130-2-406
- Update the Master Plan (MP).
  - ▶ The MP specifies the land use categories in accordance with Engineering Pamphlet 1130-2-550.
  - ▶ The last update to the Eufaula Lake MP occurred in 1977.





# Overview

- In order to implement any Federal action, the lead agency must assess impacts in accordance with the National Environmental Policy Act (NEPA)
  - ▶ In this case, impacts will be evaluated in an Environmental Impact Statement (EIS) which will be available for public review and comment.

Shoreline at Eufaula Lake



# Overview

- Comments and concerns used to identify potential impacts including (but not limited to):
  - ▶ Socioeconomic
  - ▶ Cultural
  - ▶ Environmental
  - ▶ Impacts to Lake Use and Recreation
- Environmental Impact Statement will address cumulative impacts related to the MP and SMP updated as well as specific recreation development proposals.



# Development Proposals



# Development Proposals

- Development Proposals are separate from the EIS public involvement scoping comments.
- Proposals include requested use of project shorelines or Federal lands for recreational development.
- Development proposals should include maps and detailed plans for recreation development facilities on Federal lands.

Shoreline Development proposal



# Development Proposals

- All development proposals will be received during this process.
- Only well envisioned and detailed plans can be studied in the current process.
- All development proposals should be received within 60 day of this workshop.



Photo courtesy of Carolyn Fletcher and OTRD



# Development Proposals

- Definite deadline is August 2, 2011. Proposals received after this date will **NOT** be evaluated in detail in the EIS.
- Proposals received after this date will require additional NEPA documentation in the future.
- Contributed funds:
  - ▶ While receipt of contributed funds through Oklahoma Tourism and Recreation Department will likely be necessary to advance the overall EIS, review of specific proposals are not dependent upon receipt of funds from individual requestors for specific proposals



# Development Proposals Include

(but not limited to):

## ■ Examples of Development Proposals

- ▶ Golf course(s)
- ▶ Trails /parks
- ▶ Yacht club and boat docking facilities
- ▶ Public boat ramp and parking with facilities
- ▶ Recreational facilities adjacent to residential development
- ▶ Marinas
- ▶ Restaurants
- ▶ Natural forest preserve/open space

Arrowhead State Park



Photos courtesy of  
Carolyn Fletcher  
and OTRD



# National Environmental Policy Act (NEPA)

Hérons nesting at Arrowhead State Park



Photo courtesy of Carolyn Fletcher and OTRD





# National Environmental Policy Act

## What NEPA is:

- It is **NOT** a vote or referendum on a given action or alternative

Herons nesting at Arrowhead State Park



Photo courtesy of Carolyn Fletcher and OTRD



# NEPA is:

- Identify and quantify potential impacts
- Gather public comments
- Public exchange of information
  - ▶ Problems, issues, potential alternatives
- Discuss and evaluate alternatives
- Federal, State, and local review
- Document the NEPA coordination process

Bald Eagle at Eufaula Lake



Photos courtesy of Carolyn Fletcher and OTRD



# Scoping Process

- Required by the National Environmental Policy Act
- Purpose: Solicit comments and questions on potential impacts of future Federal actions
- Conducted throughout the documentation process



# Scoping Process

- Includes:
  - ▶ Participation of federal, state, local agencies, Native American tribes, & other interested parties
  - ▶ Identification of potential impacts/concerns for further evaluation during the NEPA review
  - ▶ Identification of non-significant issues or those issues covered by prior review



# Public Notices

- Federal, state, local agencies and the public notified of scoping period
- Additional notices will be provided for:
  - ▶ Comments on draft and final documents
  - ▶ Investigation findings
  - ▶ Record of decision



# Environmental Impact Statement (EIS)



# Environmental Impact Statement (EIS)

- Evaluation and quantification of impacts identified through scoping process
- Identification and refinement of alternatives related to land development
- Allows Army chain-of-command to make an informed final decision
- Final decision maker: Designated official in Army chain-of-command



# Potential Impacts Include

(but not limited to):

- Cumulative impacts associated with past, current, and reasonably foreseeable future actions at Eufaula Lake based on lake-wide assessment
- Those associated with changes to the Eufaula Lake SMP and MP following assessment of lake-wide cumulative effects
- Socioeconomics, such as:
  - ▶ Population
  - ▶ Public services
  - ▶ Education
  - ▶ Jobs





# Potential Impacts

Continued:

- Ecological resources, such as:
  - ▶ Aquatic and terrestrial species
  - ▶ Wildlife habitat
  - ▶ Important recreational fishery
- Cultural resources
- Public access and safety
- Those associations with specific development proposals



Photo courtesy of Carolyn Fletcher and OTRD



# Potential Impacts

(continued):

- Aesthetics
- Water and wastewater infrastructure
- Lake water quality
- Traffic patterns
- Federally-listed threatened and endangered species

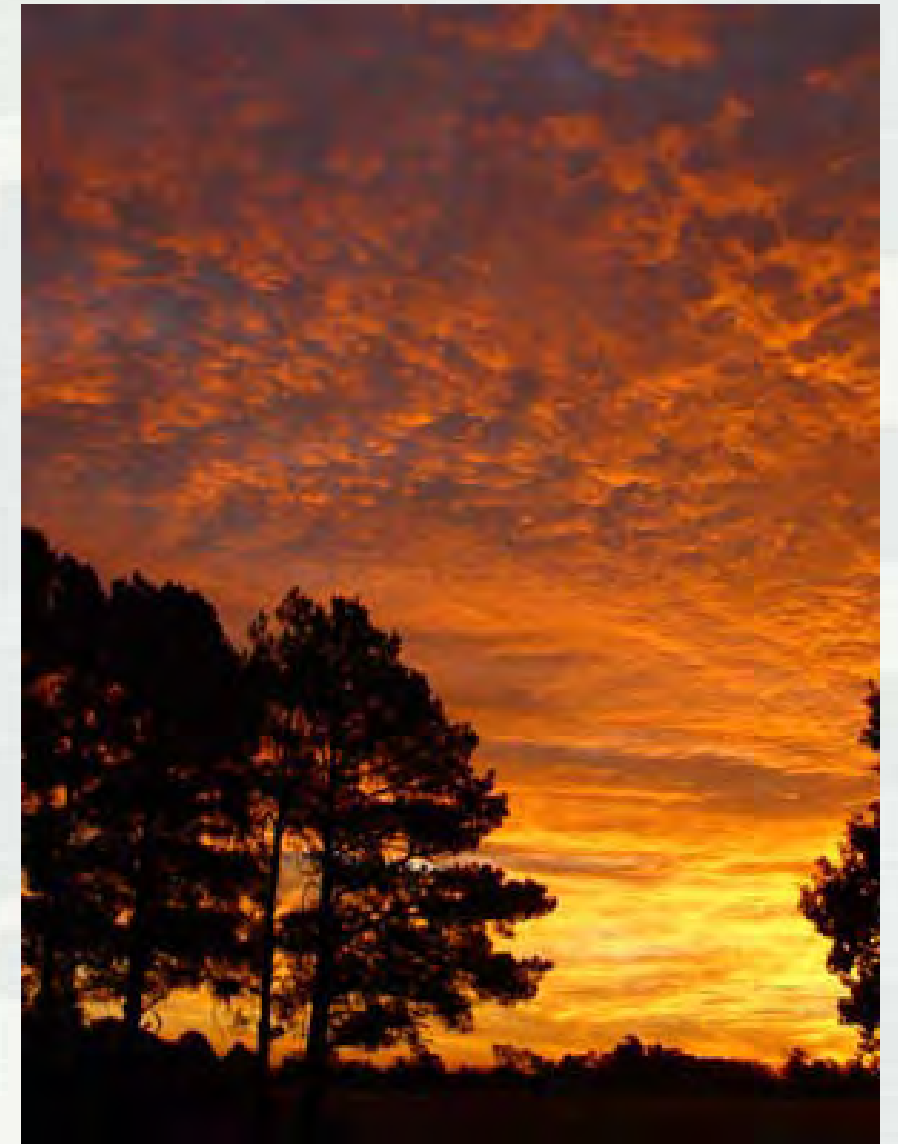


Photo courtesy of Carolyn Fletcher and OTRD



**BUILDING STRONG®**

# Potential Impacts

(continued):

- Other issues identified during the scoping process by:
  - ▶ Local landowners, residents, stakeholders
  - ▶ Study team
  - ▶ Agency input
    - Federal, state, county, city, and local
  - ▶ Public
    - Workshops, written comments, mail, e-mail, phone calls



# Existing Conditions



Photos courtesy of Carolyn Fletcher



# Existing conditions-Recreation

- 7 marinas/concessions located on Eufaula Lake
- In FY 2010: 2,295,608 total visitors at Eufaula Lake
- Over 250 housing developments located within walking distance of the lake
- Over 4,500 current residents with lake front property

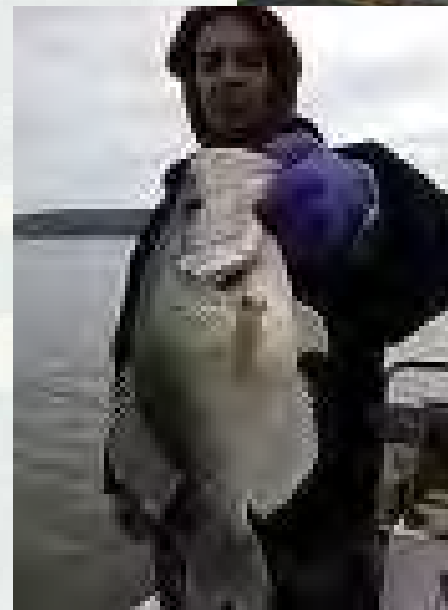


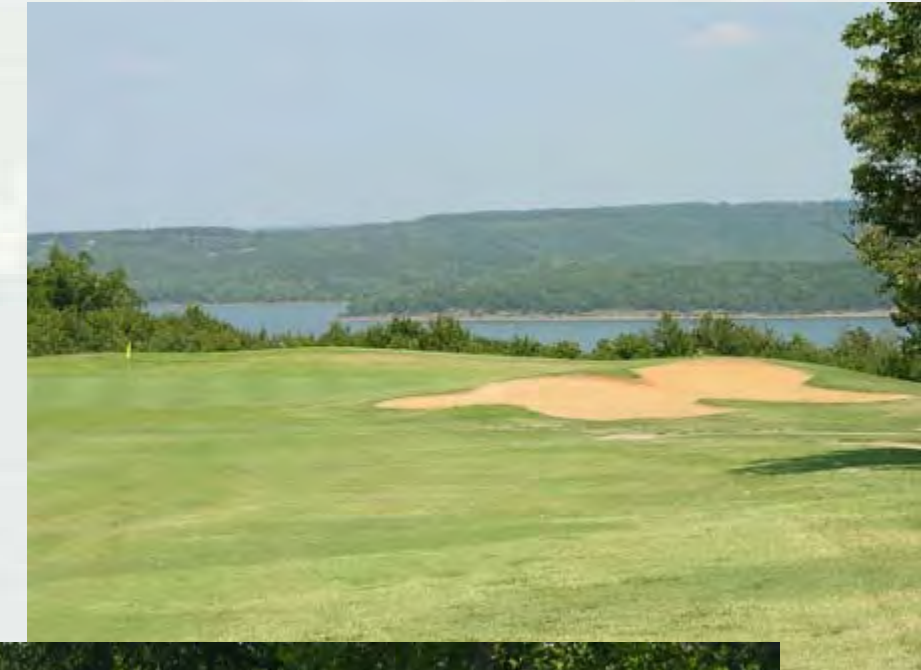
Photo courtesy of Carolyn Fletcher and ODTR



# Existing conditions-Recreation

- More than 31,800 acres of public hunting lands around Eufaula Lake.
- Lake Eufaula State Park has 235 campsites, hiking trails, a beach, marina, a restaurant, and a gift shop.
- Arrowhead State Park has 214 campsites, equestrian trails and stables, playgrounds, and a miniature golf course. Each park has an 18-hole golf course and a pro shop.

Arrowhead State Park Golf Course



# Other existing conditions

- Eufaula Lake has provided \$503,813,740 in Flood Risk Management protection during it's lifetime.
- Eufaula contributes to the McClellan-Kerr navigation channel, which provides over \$24.9 million in savings to American businesses annually.
- Eufaula dam has three 30,000 kilowatt generators creating 260 million kilowatt annually.



Photo courtesy of lakelubber.com



# Other existing conditions

- Water clarity ranges from poor (North Canadian) to excellent (Dripping Springs) while many locations have average clarity.
- Water Quality remains with the Oklahoma Water Quality Standards and is suitable for public supply use. (OWRB)

Pelicans at Eufaula Lake



Photos courtesy of Carolyn Fletcher and OTRD





# Other existing conditions

- Water Supply contracts
  - ▶ Rural Water Districts; No
    - No. 4 Pittsburg Co., No. 1&3 Haskell Co., No. 3 Muskogee Co., No. 2 McIntosh Co.
  - ▶ Warner Utilities, PSO
  - ▶ Municipalities
    - Sherwood, Porum, Twin Rivers



# Shoreline Management Plan Update

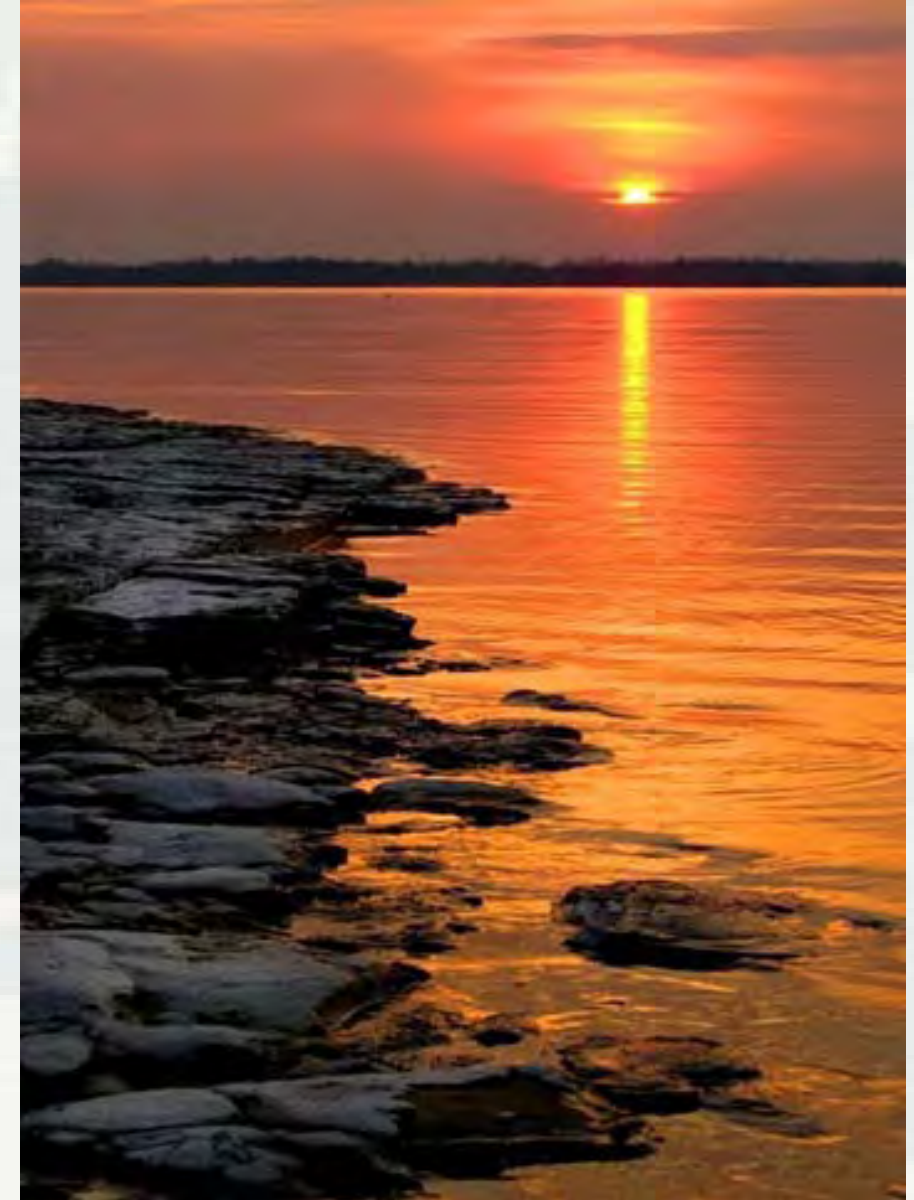


Photos courtesy of Carolyn Fletcher and OTRD



# Shoreline Management Plan

- Shoreline Management Plan is a guideline for effective management of the shoreline at Eufaula Lake. Additionally the plan addresses the shoreline allocations, rules and regulations.
  - Private dock permit applications
  - Mowing guidelines
  - Shoreline use
  - Water and electric line easement



<http://www.swt.usace.army.mil/recreat/eufaula/SMdocs/index.cfm>

Photos courtesy of Carolyn Fletcher and OTRD



# Shoreline Management Plan

- The number of shoreline-use permits issued over the past fifteen years has nearly tripled.
- Land-based permits and real estate licenses have nearly doubled over the same period.



Photos courtesy of Carolyn Fletcher and OTRD



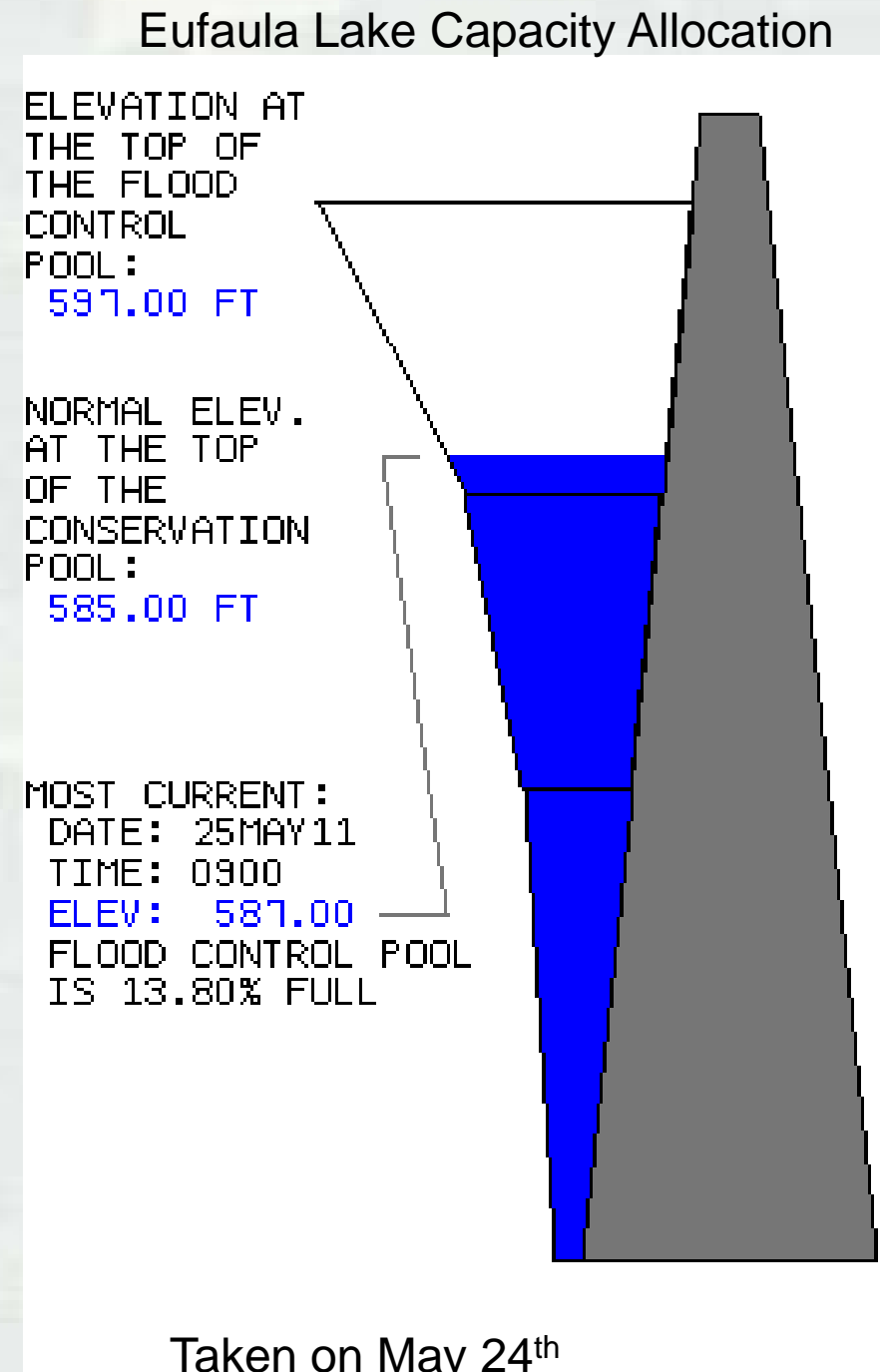
# Shoreline Management Plan

- Shoreline allocations are categorized into four types.
  - Limited Development Shoreline. (22% of Total Shoreline)
  - Public Recreation Shoreline. (21% of Total Shoreline)
  - Protected Shoreline. (56 % of Total Shoreline)
  - Prohibited Access Shoreline. (Less than 1% of Total Shoreline)
- Copy of current SMP available on the Tulsa district website : [www.swt.usace.army.mil/recreat/eufaula/SMdocs/index.cfm](http://www.swt.usace.army.mil/recreat/eufaula/SMdocs/index.cfm)



# Master Plan

- Zoning for Federal lands
- Land allocations:
  - ▶ Operations
  - ▶ Recreation
  - ▶ Fish and wildlife
  - ▶ Mitigation



# ALTERNATIVES



---

**BUILDING STRONG®**

# Reasonable Alternatives to be Considered:

- No Action
  - ▶ Required by NEPA
  - ▶ Expected future conditions absent changes to the SMP, MP, or consideration of development proposals
  - ▶ Establishes a baseline condition upon which to compare impacts of various alternatives





# Reasonable Alternatives to be Considered:

- Other potential alternatives:
  - ▶ Alternative land allocations for MP zoning
  - ▶ Alternatives for development proposals
  - ▶ Alternative shoreline development zoning under SMP
  - ▶ Others as identified through the NEPA process



# Future and Ongoing Activities

- Web Site (<http://www.swt.usace.army.mil>)
  - ▶ Information about the Process
  - ▶ Comments and Questions
  - ▶ Points of Contact
- Draft Document for Public Review
  - ▶ Public Workshops to Discuss Draft Environmental Impact Statement
- Comment Periods
- Notifications of Activities in newspapers, direct mail and other means



# For More Information and to Submit NEPA scoping Comments:

- See any representative here
- Contact the U.S. Army Corps of Engineers, Tulsa District

**Stephen L. Nolen**

**Chief, Environmental Analysis and Compliance Branch**

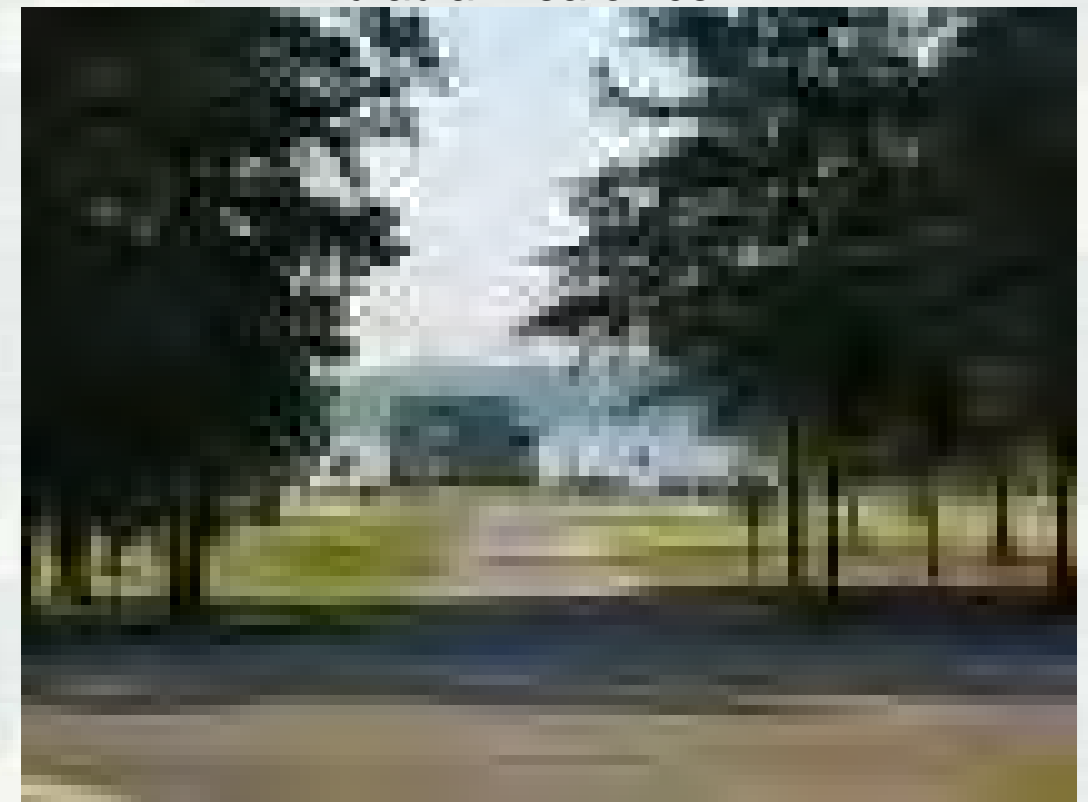
- **U.S. Army Corps of Engineers**  
**Attn: CESWT-PE-E**  
**1645 South 101st East Avenue**  
**Tulsa, OK 74128-4629**
- **(918) 669-7660**
- **Fax: (918) 669-7546**
- **E-mail: *Stephen.L.Nolen@usace.army.mil.***



# Lake Office Open House:

- Lake office open house to be held on 30<sup>th</sup> 1:00 p.m. – 3:00 p.m.
- This will provide an opportunity to visit with lake staff regarding development proposals

Eufaula Area office



# To Submit Specific Development Proposals:

- E-mail Mr. Jeff Knack at: [Jeff.Knack@usace.army.mil](mailto:Jeff.Knack@usace.army.mil)
- Contact the Eufaula Lake office:

## **Corps of Engineers, Eufaula Lake**

Phone: (918) 484-5135      Fax: (918) 484-2266

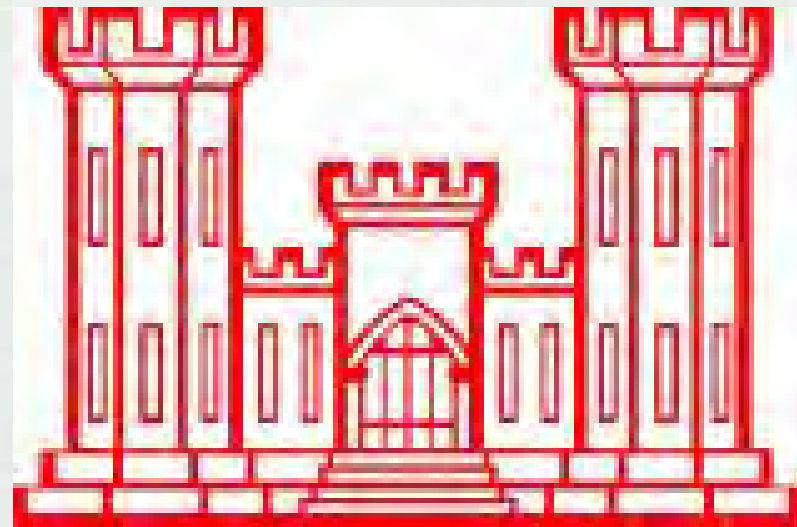
102 E BK 200 RD

Stigler, Oklahoma 74462-9440



# THANK YOU!!!

Your participation is valued and essential!



Encourage other interested parties to participate in the process!



# Eufaula EIS Schedule

