

RECLAMATION

Managing Water in the West



Directory of Services

Current version is available online at
http://www.usbr.gov/pmts/tech_services/tskdir/cform.cfm



U.S. Department of the Interior
Bureau of Reclamation

January 2012

Mission Statements

The U.S. Department of the Interior protects America's natural resources and heritage, honors our cultures and tribal communities, and supplies the energy to power our future.

The mission of the Bureau of Reclamation is to manage, develop, and protect water and related resources in an environmentally and economically sound manner in the interest of the American public.

Technical Service Center Profile

Created	October 1994												
Agency	United States Department of the Interior Bureau of Reclamation												
Director	Lowell Pimley, 303-445-2720												
Contacts	Civil Engineering Services, Dick LaFond, 303-445-3226 Water and Environmental Resources, Craig Albertsen, 303-445-2526 Geotechnical Services, Karen Knight, 303-445-3044 Infrastructure Services, Mark Boyle, 303-445-2828												
How to Contact Us	Internet address < http://www.usbr.gov/pmts/tech_services > Email address lpimley@usbr.gov Telephone 303-445-2720 Fax 303-445-6379 Address Denver Federal Center, Bldg 67 PO Box 25007 (86-68000) Denver, CO 80225-0007												
Our Business	World-class engineering, science, research, and support services for projects related to water resources												
How We Operate	The Technical Service Center recovers our operating costs through fee-for-service arrangements with clients without profit												
Number of Employees	519												
Our Clients	<i>Reclamation:</i> Reclamation's Commissioner; Regional and Area Offices; Safety of Dams Program; Program and Administration; Science and Technology Program; Office of Security, Safety, and Law Enforcement; International Affairs Office; Management Services Office, etc. <i>Other government agencies:</i> National Park Service, the U.S. Fish and Wildlife Service, the U.S. Geological Survey, Department of Energy, Bureau of Indian Affairs, the U.S. Environmental Protection Agency, etc. <i>International Customers</i>												
Annual Revenues	\$72 million												
Billable Rates (FY12)	<table><thead><tr><th>Skill Level</th><th>Hourly</th><th>Daily</th></tr></thead><tbody><tr><td>1 (GS-10 or below)</td><td>\$69</td><td>\$552</td></tr><tr><td>2 (GS-11 or 12)</td><td>\$95</td><td>\$760</td></tr><tr><td>3 (GS-13 or above)</td><td>\$117</td><td>\$936</td></tr></tbody></table>	Skill Level	Hourly	Daily	1 (GS-10 or below)	\$69	\$552	2 (GS-11 or 12)	\$95	\$760	3 (GS-13 or above)	\$117	\$936
Skill Level	Hourly	Daily											
1 (GS-10 or below)	\$69	\$552											
2 (GS-11 or 12)	\$95	\$760											
3 (GS-13 or above)	\$117	\$936											

Please See Our Web site

*We have much more information on our Web site at
<http://www.usbr.gov/pmts/tech_services/>.*

*You can use our easy-to-use search engine for TSC services at
<http://www.usbr.gov/pmts/tech_services/tskdir/cform.cfm>. You can
also download a copy of the latest TSC Directory from there.*

*Please email TSCCHANGE@usbr.gov if you would like additional hard
copies of the Directory, have changes to make to the Directory, or have
photos of projects or staff that could be used on the cover of future
editions.*

Contents

	<i>Page</i>
TSC Condensed Directory of Services Contacts	1
Alphabetical Directory of TSC Staff	3
86-68000 Director, Technical Service Center	9
68010 Client Support and Technical Presentations Office	11
86-68100 Civil Engineering Services Division	15
68110 Structural Analysis Group	17
68120 Plant Structures Group	17
68130 Waterways and Concrete Dams Group	18
68140 Water Conveyance Group	18
68170 Estimating, Specifications, and Construction Management Group	19
68180 Materials Engineering and Research Laboratory Group	20
86-68200 Water and Environmental Resources Division	23
68210 Water Resources Planning and Operations Support Group	25
68212 Economics and Resource Planning Team	26
68220 Environmental Applications and Research Group	27
68221 Water Treatment Engineering Research Team	28
68240 Sedimentation and River Hydraulics Group	29
68250 Flood Hydrology and Emergency Management Group	30
68251 Remote Sensing and Geographic Information Systems Team	31
68290 Fisheries and Wildlife Resources Group	32
86-68300 Geotechnical Services Division	35
68300 Risk Advisory Team	37
68311 Embankment Dams and Geotechnical Engineering Group 1	37
68312 Embankment Dams and Geotechnical Engineering Group 2	37
68313 Embankment Dams and Geotechnical Engineering Group 3	37
68320 Engineering Geology Group	38
68322 Geotechnical Computer and Technical Support Team	38
68330 Seismotectonics and Geophysics Group	39
68360 Instrumentation and Inspections Group	40
86-68400 Infrastructure Services Division	43
68410 Mechanical Equipment Group	45
68420 Hydraulic Equipment Group	45
68430 Electrical Design Group	46
68440 Hydropower Technical Services Group	47
68460 Hydraulic Investigations and Laboratory Services Group	48

Contents - continued

Page

TSC Subject Matter Areas and Contacts	51
TSC Employee Telephone Directory (by Work Group).....	81
Bureau of Reclamation Organization Chart	91
Technical Service Center Organization Chart.....	92

Alphabetical Directory of TSC Staff

This list shows all TSC staff by last name, first name, phone number and organization code (86-XXXXX).

A

Adams, Luke, 303-445-2861, 68420
 Agee, J. C., 303-445-2309, 68440
 Ahlers, Darrell, 303-445-2233, 68290
 Akins, Greg, 303-445-3093, 68170
 Albertsen, Craig, 303-445-2526, 68200
 Alexander, Patty, 303-445-2574, 68010
 Allen, Jeff, 303-445-3303, 68170
 Andersen, Doug, 303-445-2209, 68220
 Arthur, Nancy, 303-445-3078, 68170
 Atwater, Kevin, 303-445-3113, 68140

B

Babcock, John, 303-445-3095, 68170
 Baca, Billy, 303-445-2331, 68460
 Bailey, Ian, 303-445-3073, 68170
 Bailey, James, 303-445-2704, 68010
 Baird, Drew, 303-445-2564, 68240
 Bark, Raymond, 303-445-2204, 68290
 Barns, Sheena, 303-445-2609, 68130
 Barraclough, Mark, 303-445-2987, 68313
 Barthel, Rodney, 303-445-3221, 68120
 Bartojay, Katie, 303-445-2374, 68180
 Battle, Jakym, 303-445-2361, 68180
 Bauer, Travis, 303-445-3672, 68330
 Baumgarten, Bob, 303-445-3076, 68170
 Baumgarten, Brian, 303-445-2344, 68180
 Baybayan, Allen, 303-445-2280, 68430
 Baysinger, Jeff, 303-445-3194, 68140
 Bell, Alan, 303-445-2268, 68251
 Bender, Merlynn, 303-445-2460, 68220
 Benik, Rick, 303-445-3242, 68130
 Berg, Glenna, 303-445-2577, 68010
 Bergstrom, Eric, 303-445-2974, 68312
 Berk, Darrell, 303-445-2269, 68430
 Bernal, Yvonne, 303-445-2205, 68290
 Bernstein, Al, 303-445-3275, 68120
 Best, Eric, 303-445-2179, 68290
 Bhattacharya, Babi, 303-445-3184, 68313
 Black, Jason, 303-445-2166, 68460
 Black, Susan, 303-445-2705, 68212
 Blickenstaff, Kristine, 303-445-2507, 68210
 Bliss, Mark, 303-445-2988, 68313
 Block, Lisa, 303-445-3171, 68330
 Borda, Charles, 303-445-2728, 68212
 Bountry, Jennifer, 303-445-3614, 68240
 Bowen, Mark, 303-445-2222, 68290
 Bowles, Linda, 303-445-3114, 68140
 Boyle, Mark, 303-445-2828, 68400
 Bradshaw, Jeremiah, 303-445-2812, 68430
 Brockman, Kenneth, 406-949-1514, 68172
 Broderick, Susan, 303-445-2235, 68220
 Brom, Kelly, 303-445-3464, 68250

Brooks, John, 303-445-2878, 68420
 Brower, Al, 303-445-2507, 68210
 Brown, Tim, 303-445-3709, 68140
 Buck, John, 303-445-2381, 68180
 Burnett, Roger, 303-445-2508, 68210

C

Caldwell, Jason, 303-445-2536, 68250
 Campbell, DeWayne, 303-445-3052, 68360
 Carbone, Linda C., 303-445-3739, 68170
 Cardon, Diana, 303-445-3301, 68170
 Carlson, John, 303-445-2270, 68240
 Carlson, Rob, 303-445-3077, 68170
 Carpenter, Jeannette, 303-445-2230, 68220
 Carson, Janice, 303-445-3466, 68010
 Cartensen, Durel, 303-445-2218, 68290
 Casement, Joan, 303-445-2017, 68220
 Casey, Larissa, 303-445-3234, 68120
 Cawthorne, Gary, 303-445-2817, 68440
 Cha, Chou, 303-445-3129, 68140
 Chapman, Michelle, 303-445-2264, 68221
 Cheek, Dane, 303-445-2162, 68460
 Christensen, Rick, 303-445-2858, 68410
 Chugh, Ashok, 303-445-3026, 68311
 Chung, Sammy, 303-445-2016, 68251
 Clair, Kyle, 303-445-2813, 68440
 Clark, Douglas, 303-445-2271, 68251
 Cline, Roger, 303-445-2293, 68410
 Clough, Nicholas, 303-445-3112, 68140
 Coberly, Steven, 303-445-3291, 68440
 Cohen, Bitsy, 303-445-3247, 68130
 Collins, Colette, 303-445-2540, 68250
 Collins, Kent, 303-445-2549, 68240
 Coleman, Kristi, 303-445-2924, 68312
 Condon, Laura, 303-445-2232, 68210
 Converse, Kyle, 303-445-2859, 68420
 Craig, Paul, 303-445-2982, 68312
 Crawford, Doug, 303-445-2290, 68430
 Crutchfield, Lloyd, 303-445-3074, 68320
 Curran, Dave, 303-445-2992, 68313

D

Dahm, Katherine, 303-445-2495, 68221
 Dam, Kim, 303-445-3633, 68430
 Danley, Chris, 303-445-2755, 68360
 Danos, Warren, 303-445-3053, 68360
 Davidson, Ryan, 303-445-3020, 68312
 Davis, Rob, 303-445-2730, 68212
 Davis, Roy, 303-445-3055, 68360
 Dawson, Patrick, 303-445-3758, 68410
 DeHaan, Jim, 303-445-2305, 68440
 Delagah, Saied, 303-445-2248, 68221
 Derouin, Sarah, 303-445-3180, 68330

Technical Service Center Directory

Dewey, Bob, 303-445-2976, 68313
Dewolfe, Giorgia, 303-445-3027, 68311
Dham, Riba, 303-445-2638, 68120
Dixon, Leif, 303-445-3071, 68311
Dombroski, Dan, 303-445-2570, 68240
Dominic, Stephen, 303-445-2379, 68130
Donaldson, Dan, 303-445-3080, 68170
Dowling, Casey, 303-445-2386, 68180
Drake, Dan, 303-445-2874, 68420
Dressel, William, 303-445-3267, 68110
Duke, Chris, 303-445-3120, 68140
Dundorf, Steve, 303-445-2263, 68120
Durham, Shanna, 303-445-2876, 68420
Dworak, Frank, 303-445-2547, 68250

E

Earle, John, 303-445-3152, 68320
East, Jonathan, 303-445-3217, 68110
Eastment, Eric, 303-445-2324, 68440
Eckhardt, David, 303-445-2273, 68251
Eddy, Greg, 303-445-2984, 68313
Egan, Randy, 303-445-2855, 68410
Einhellig, Robert F., 303-445-2142, 68460
Ell, Jeremy, 303-445-2860, 68410
Ellingson, John, 303-445-3264, 68130
Ellis, Christopher, 303-445-3056, 68311
Engel, Paula, 303-445-2732, 68212
Engemoen, Bill, 303-445-2960, 68300
England, John, 303-445-2541, 68250
Enz, Stephanie, 303-445-3733, 68410
Erdogan, Zeynep, 303-445-2348, 68180

F

Fabbri, Matthew, 303-445-2344, 68440
Farnes, Brianna, 303-445-3066, 68360
Farrar, Jeff, 303-445-2333, 68320
Feinberg, Bruce, 303-445-3241, 68250
Fenton, Kathleen, 303-445-2274, 68290
Ferguson, Ian, 303-445-2513, 68210
Ferrari, Ronald, 303-445-2551, 68240
Few, Benjamin, 303-445-2304, 68440
Fiedler, Bill, 303-445-3248, 68300
Fisher, David, 303-445-2542, 68250
Fisk, Gary, 303-445-2980, 68313
Fotherby, Lisa, 303-445-2476, 68240
Frazar, Ed, 303-445-3297, 68170
Frisz, Rick, 303-445-2879, 68420
Frizell, Warren, 303-445-2145, 68460

G

Gagliardi, Jack, 303-445-2969, 68311
Gagner, Kevin, 303-445-2746, 68360
Galic, Domagoj, 303-445-2961, 68312
Gallegos, Lorenzo, 303-445-2300, 68440
Gamuciello, Lisa, 303-445-2835, 68430
Gangopadhyay, Subhrendu, 303-445-2465, 68210
Gaston, Todd, 303-445-2738, 68212
Gemperline, Chris, 303-445-3199, 68313
Gemperline, Joe, 303-445-2483, 68140
Germann, John, 303-445-2295, 68410

Gesundheit, Dave, 303-445-3119, 68140
Gill, Tom, 303-445-2201, 68460
Gillette, Dave, 303-445-2994, 68313
Girgis, George, 303-445-2310, 68430
Gobla, Michael, 303-445-3032, 68313
Godaire, David, 303-445-3249, 68130
Godaire, Jeanne, 303-445-3164, 68330
Goettlicher, Bill, 303-445-2275, 68251
Goins, Danny, 303-445-3057, 68360
Gonzales, Daniel, 303-445-2250, 68440
Gonzales, Will, 303-445-3149, 68312
Gonzalez, Cesar, 303-445-3228, 68313
Goodrich, Amy, 303-445-2536, 68250
Goplen, Brian, 303-445-3271, 68120
Gray, Cindy, 303-445-2615, 68010
Greimann, Blair, 303-445-2563, 68240
Grenemyer, Dustin, 303-445-2299, 68440
Griess, Todd W., 303-445-2811, 68430
Grush, Craig, 303-445-3081, 68170
Guerra, Katie, 303-445-2013, 68221
Gulsvig, Greg, 303-445-3082, 68170
Gulsvig, Michael, 303-445-2832, 68420

H

Haley, Keith, 303-445-2899, 68170
Hall, Ernie, 303-445-3244, 68130
Hamedian, Sherry, 303-445-3224, 68110
Hanke, Norman, 303-445-3083, 68170
Hanna, Leslie, 303-445-2146, 68460
Hanneman, Dennis, 303-445-2958, 68311
Hannigan, Ashley, 303-445-2838, 68440
Harden, Tessa, 303-445-3317, 68330
Harpman, David, 303-445-2733, 68212
Harris, Jonathan, 303-445-2959, 68313
Harrison, Alan, 303-445-2459, 68210
Hart, Tonya, 303-445-2968, 68313
Hardee, Ken, 303-445-2998, 68313
Hastings, Jimmy, 303-445-2153, 68460
Heckler, Bill, 303-445-2833, 68430
Heiner, Bryan, 303-445-2140, 68460
Heisler, Rebecca, 303-445-3172, 68320
Hepler, Tom, 303-445-3261, 68130
Heyder, Walt, 303-445-3246, 68130
Hidalgo, Allison, 303-445-2326, 68440
Higgs, James, 303-445-2147, 68460
Hilldale, Robert, 303-445-3135, 68240
Hoang, Vince, 303-445-2836, 68440
Hoffman, Peter, 303-445-2880, 68420
Holburn, Elaina, 303-445-2550, 68240
Holdren, G. Chris, 303-445-2178, 68220
Holmes, Jill, 303-445-2307, 68440
Horn, Jackie, 303-445-2026, 68430
Horn, Mike, 303-445-2203, 68220
Hosler, Denise, 303-445-2195, 68220
Hoss, Jeff, 303-445-2831, 68410
Howard, Ted, 303-445-3042, 68311
Huang, Victor, 303-445-2158, 68240
Huerta, Olaff, 303-445-3270, 68120
Hueth, Chuck, 303-445-2183, 68290
Huggins, Jennifer, 303-445-2491, 68130

Hulse, Dave, 303-445-2881, 68410
 Hummel, Terry, 303-445-3103, 68410
 Hunt-Williams, Sheri, 303-445-3141, 68312
 Hurcomb, Doug, 303-445-2336, 68180
 Hurrell, Derek, 303-445-2857, 68410
 Hutcherson, Jarod, 303-445-2011, 68290

I

Irey, Peter, 303-445-3033, 68311
 Irvine, Scott, 303-445-2253, 68120

J

Jackson, Bethany, 303-445-2387, 68180
 Jackson, Brandon, 303-445-3205, 68120
 Jecminek, Nicole, 303-445-3213, 68120
 Jensen, Navead, 303-445-3142, 68311
 Johnson, Karen, 303-445-3289, 68300
 Johnson, Stacy, 303-445-3277, 68130
 Jones, Eric, 303-445-3132, 68110
 Jones, Jim, 303-445-3168, 68330
 Jones, Marcia H., 303-445-2337, 68360
 Jones, Matt, 303-445-3198, 68330
 Jorgensen, Erik, 303-445-3604, 68120
 Joy, Westin, 303-445-2382, 68180
 Joyce, Charles, 303-445-2863, 68140
 Jurenka, Robert, 303-445-2254, 68120

K

Kallio, Rebecca, 303-445-2533, 68250
 Kamstra, Lex, 303-445-2544, 68250
 Karp, Catherine, 303-445-2226, 68290
 Katers, Andrew, 303-445-2842, 68430
 Kayser, Jack, 303-445-3061, 68360
 Kellstadt, Dave, 303-445-2385, 68360
 Kelly, John, 303-445-2822, 68430
 Kelly, Kevin, kkelly@usbr.gov, 68220
 Kelsic, Rick, 303-445-3059, 68360
 Kennedy, Seth, 303-445-2182, 68290
 Kepler, Bill, 303-445-2386, 68180
 Kiene, Al, 303-445-2965, 68312
 Kimbrel, Sean, 303-445-2539, 68240
 Kinkel, Brenda, 303-445-2530, 68250
 Klinger, Ralph, 303-445-3173, 68330
 Klish, Dave, 303-445-3060, 68360
 Klumpp, Cassie, 303-445-2554, 68240
 Knight, Karen, 303-445-3044, 68300
 Koltuniuk, Roman, 303-445-3225, 68110
 Kottenstette, Joe, 303-445-2966, 68312
 Kramer, Michael, 303-445-2946, 68120
 Kresin, David, 303-445-3131, 68110
 Krest, Lisa, 303-445-3260, 68250
 Kubitschek, Joseph, 303-445-2148, 68460
 Kurzdorfer, Ronnie, 303-445-3269, 68110
 Kuzniakowski, Randy, 303-445-3043, 68313

L

LaFond, Dick, 303-445-3226, 68100
 Lai, Yong, 303-445-2560, 68240
 Lajimodiere, Bernie, 303-445-2996, 68120
 Larrimore, Kevin, 303-445-2983, 68311

Larsen, Deena, 303-445-2584, 68010
 Larson, William (Mike), 303-445-2531, 68250
 Latham, Amy, 303-445-3140, 68140
 Latham, Stephen, 303-445-2519, 68110
 Learned, Cheryl, 303-445-2773, 68311
 Leavitt, Mark, 303-445-3227, 68140
 LeBlanc, Ronald, 303-445-3230, 68120
 Ledezma, Gabriel, 303-445-3137, 68140
 Lee, Kevin, 303-445-3022, 68313
 Leffel, Sharon, 303-445-2585, 68010
 Leidholdt, Susie, 303-445-2828, 68400
 Leitz, Frank, 303-445-2255, 68221
 Lender, Nancy, 303-445-3299, 68170
 Lentz, Dale, 303-445-2143, 68460
 Levish, Dan, 303-445-3175, 68330
 Liechty, Daniel, 303-445-3214, 68330
 Liscomb, Darryl, 303-445-2794, 68430
 Little, Daryl, 303-445-2384, 68180
 Liu, Ming, 303-445-3259, 68110
 Liu, Pengcheng, 303-445-2562, 68330
 Lopez, Gloria, 303-445-2381, 68180
 Lorberau, Jeremy, 303-445-3118, 68140
 Lottes, Leah, 303-445-2180, 68460
 Lowder, Diane, 303-445-3050, 68360
 Luebke, Tom, 303-445-2600, 68010
 Lung, Robert, 303-445-3190, 68320

M

Maag, Dan, 303-445-3084, 68170
 Macartney, James, 303-445-3296, 68170
 MacDonald, Robert, 303-445-3404, 68360
 Madera, Veronica, 303-445-2424, 68180
 Magalong, Connie, 303-445-3085, 68170
 Magalong, Renee, 303-445-3122, 68140
 Maier, Patrick, 303-445-2601, 68130
 Major, Jeanne, 303-445-2972, 68312
 Makar, Paula, 303-445-2555, 68240
 Manross, Teri, 303-445-2587, 68010
 Mar, Daniel, 303-445-2872, 68170
 Mares, Dan, 303-445-3252, 68130
 Markiewicz, Rich, 303-445-3167, 68330
 Markley, John, 303-445-3254, 68130
 Martin, Gary, 303-445-3707, 68360
 Martin, Peter, 303-445-2588, 68250
 Martinez, Dave, 303-445-2997, 68322
 Mauney, Lee, 303-445-2464, 68250
 Maurer, Cory, 303-445-2834, 68430
 McCaslin, Angela, 303-445-2320, 68440
 McDaniel, Tom, 303-445-3556, 68312
 McFarland, Tara, 303-445-2995, 68313
 McGovern, Bob, 303-445-3243, 68130
 McKelvie, David, 303-445-3099, 68170
 McStraw, Bill, 303-445-2294, 68410
 Mefford, Brent, 303-445-2149, 68460
 Mills-Bria, Barbara, 303-445-3229, 68110
 Mitchell, Mark, 303-445-2381, 68180
 Mitzelfield, William, 303-445-3096
 Mogck, Larry, 303-445-3237, 68360
 Monson, Marshall, 303-445-3200, 68322
 Moore, Andrea, 303-445-2952, 68010

Technical Service Center Directory

Moore, David, 303-445-2242, 68290
Morris, Jeff, 303-445-3373, 68170
Mortensen, Joshua, 303-445-2156, 68460
Morton, Mark, 303-445-3014, 68320
Mueller, Gordon, 303-445-2218, 68220
Munger, Dawn, 303-445-2734, 68212
Murphy, Andy, 303-445-2017, 68220
Myers, Nathan, 303-445-2643, 68440

N

Nakamoto, Nathan, 303-445-3692, 68420
Nelson, Mark S., 303-445-2225, 68220
Neumaier, Jim, 303-445-3280, 68120
Ngozi-Bullock, Khadija, 303-445-2375, 68180
Nibling, Fred, 303-445-2202, 68220
Noi, Richard, 303-445-2819, 68430
Novembre, Nicole, 303-445-2543, 68250
Nuanes, Sharon, 303-445-2533, 68250

O

Oaks, Ron, 303-445-2975, 68312
Ocana, Susan, 303-445-3178, 68010
Oliver, Jan Karri-, 303-445-2281, 68240
O'Meara, Scott, 303-445-2216, 68220
Orlicky, Amy, 303-445-2792, 68212
O'Shea, Kevin, 303-445-3223, 68120
O'Shea, Mike, 303-445-3272, 68120
Osman, Khadija, 303-445-3062, 68360
Osmun, Dan, 303-445-2980, 68300
Osterberg, John, 303-445-2462, 68210
Ouellette, Elizabeth, 303-445-3036, 68312

P

Parker, Nancy, 303-445-2532, 68210
Parson, Dianne, 303-445-2302, 68010
Patterson, Jay, 303-445-2753, 68430
Patterson, Shawn, 303-445-2311, 68440
Pattie, John, 303-445-3273, 68120
Pavol, Anne, 303-445-3116, 68140
Payne, Terry, 303-445-3232, 68360
Pepin, Rick, 303-445-2391, 68180
Percell, Phoebe, 303-445-3253, 68110
Perkins, Remeshian, 303-445-2714, 68430
Perry, Thomas, 303-445-2567, 68210
Petersen, Tyna, 303-445-2573, 68010
Piety, Lucy, 303-445-3185, 68330
Pimley, Lowell, 303-445-2720, 68000
Piper, Steve, 303-445-2736, 68212
Platt, Jon, 303-445-2737, 68212
Podany, Nicholas, 303-445-2815, 68430
Ponnferrada, Norm, 303-445-2234, 68290
Poos, Brandon, 303-445-2389, 68180
Poos, Marty, 303-445-2161, 68460
Popelka, Andrea, 303-445-2762, 68360
Porras-Mendoza, Yuliana, 303-445-2265, 68221
Portz, Don, 303-445-2220, 68290
Power, Kate, 303-445-3276, 68170
Price, Gia, 303-445-3268, 68130
Pruitt, Tom, 303-445-2512, 68210
Purto, Gerri, 303-445-3051, 68360

Q

Quiniones, Andres, 303-445-2851, 68240

R

Rademacher, Emily, 303-445-3445, 68010
Randle, Tim, 303-445-2557, 68240
Read, Don, 303-445-2884, 68420
Redhorse, Becky, 303-445-2710, 68212
Redwine, Joanna, 303-445-3188, 68330
Reed, Gregory, 303-445-2208, 68290
Reed, Shaun, 303-445-2873, 68410
Reynolds, Rose, 303-445-3239, 68110
Rinehart, Robert, 303-445-2395, 68180
Ritt, Alex, 303-445-2866, 68410
Rittgers, Justin, 303-445-3010, 68330
Robertson, Bret, 303-445-2381, 68180
Robertson, Steve, 303-445-3123, 68140
Rodriguez, Robert, 303-445-2262, 68120
Romansky, Mike, 303-445-2970, 68312
Romero, Jesus, 303-445-3124, 68140
Rossi, Larry, 303-445-2820, 68430
Rougely, David, 303-445-2318, 68440
Ruchti, Paul, 303-445-3290, 68120
Rudkin, Caleb, 303-445-3069, 68313
Russell, Kendra, 303-445-2552, 68240
Ryan, Stephen, 303-445-2234, 68290

S

Salamon, Jerzy, 303-445-3234, 68110
Salas, David, 303-445-3619, 68251
Sanders, James, 303-445-3001, 68140
Sankovich, Victoria, 303-445-2474, 68250
Sayer, Ken, 303-445-3125, 68140
Schipper, Sharon, 303-445-3289, 68311
Schlein, Paul, 303-445-2868, 68410
Schlosser, Eric, 303-445-3048, 68360
Schlundt, Kent, 303-445-3102, 68420
Schmidt, Jason, 303-445-2843, 68440
Schneider, Jason, 303-445-2590, 68110
Schubitzke, Paul, 303-445-3365, 68330
Schuh, Mike, 303-445-2821, 68430
Schwairy, Ken, 303-445-3015, 68360
Schwarzer, Justin, 303-445-3097, 68330
Scobell, Tom, 303-445-3706, 68130
Scott, Bryan, 303-445-2977, 68312
Sechrist, Juddson, 303-445-2198, 68290
Sewell, Jim, 303-445-3063, 68440
Sharman, Jerry, 303-445-2749, 68360
Shepherd, Mike, 303-445-3262, 68110
Shisler, John, 303-445-2869, 68410
Siebert, Gary, 303-445-3089, 68170
Siegler, Rebecca, 303-445-2237, 68290
Simonavice, Mike, 303-445-2196, 68220
Simpson, Bryan, 303-445-3094, 68320
Singh, Shawn, 303-445-2361, 68180
Sixta, Mike, 303-445-2568, 68240
Skaja, Allen, 303-445-2396, 68180
Slaven, Chris, 303-445-3046, 68311

Smith, Del, 303-445-2516, 68210
 Smith, Ken, 303-445-2885, 68420
 Snodgrass, Elizabeth, 303-445-2720, 68000
 Snyder, Gary, 303-445-3282, 68120
 Soddell, Jade, 303-445-2538, 68250
 Spears, Mark, 303-445-2514, 68210
 Starbuck, David, 303-445-2317, 68180
 Stanton, Doug, 303-445-3265, 68130
 Stateler, Jay, 303-445-3064, 68360
 Stenberg, Jeffrey, 303-445-2321, 68440
 Stephen, Ryan, 303-445-2867, 68410
 Stevens, Scott, 303-445-3039, 68311
 Steves, Toby, 303-445-3258, 68440
 Strauss, Tom, 303-445-2343, 68180
 Streifel, Art, 303-445-3126, 68140
 Strickland, Christopher, 303-445-2625, 68322
 Strozinski, Katherine, 303-445-3266, 68170
 Su, Feng, 303-445-3209, 68330
 Suggs, John, 303-445-3065, 68360
 Sullivan, Chuck, 303-445-3145, 68320
 Sutley, Garrett, 303-445-3047, 68311
 Sutphin, Zak, 303-445-2141, 68290
 Svoboda, Connie, 303-445-2152, 68460
 Swaim, Kristen, 303-445-3037, 68330
 Swain, Bob, 303-445-2525, 68250
 Swanson, Charlie, 303-445-2757, 68360
 Swihart, Jay, 303-445-2397, 68180

T

Talbot, Bob, 303-445-2518, 68320
 Taylor, Sharon, 303-445-2052, 68290
 Thullen, Joan, 303-445-2212, 68220
 Tierney, Tuti, 303-445-3016, 68313
 Tiffenbach, Andrew, 303-445-2393, 68221
 Tinetti, Paul (Richard), 303-445-2325, 68440
 Tobin, Caleb, 303-445-3210, 68120
 Toothman, Adam, 303-445-3596, 68110
 Tordonato, David, 303-445-2394, 68180
 Torres, Roger, 303-445-2967, 68312
 Touseull, Jack, 303-445-2346, 68312
 Travers, Benjamin, 303-445-2347, 68440
 Travers, Fred, 303-445-2398, 68180
 Trojanowski, John, 303-445-3263, 68130
 Tucker, Anne, 303-445-3278, 68360
 Turcotte, Roger, 303-445-2383, 68180
 Turlington, Gary, 303-445-2340, 68320
 Turnage, Toby, 303-445-2864, 68420

U

Uchiyama, Joe, 303-445-2845, 68440

V

Vail, Mike, 303-445-3019, 68311
 Vandeberg, Mark A., 303-445-3306, 68320
 Vandegrift, Todd, 303-445-2534, 68210
 VanOtterloo, Brad, 303-445-3179, 68120
 Varyu, David, 303-445-2535, 68240
 Vaughn, Eric, 303-445-2816, 68430
 Vaughn, Jennifer, 303-445-2469, 68210
 Vauk, Jared, 303-445-3147, 68320

Venturini, Hillery, 303-445-3281, 68110
 Vermeyen, Tracy, 303-445-2154, 68460
 Vigil, Annette, 303-445-2537, 68200
 VonFay, Kurt, 303-445-2399, 68180
 Voorheis, Pete, 303-445-2846, 68440
 Vu, Henry, 303.445.2837, 68430
 Vu, Hoa, 303-445-2312, 68440

W

Wagner, Jason, 303-445-3136, 68140
 Wahl, Tony, 303-445-2155, 68460
 Walker, Ryan, 303-445-3086, 68320
 Walp, John, 303-445-2871, 68410
 Waltz, Ruthanne, 303-445-5896, 68410
 Ward, Susan, 303-445-2690, 68010
 Waugh, Jerry, 303-445-3192, 68420
 Weeks, Benjamin, 303-445-2306, 68440
 Weems, Mike, 303-445-3617, 68410
 Wegher, Carly, 303-445-3236, 68130
 Weingardt, Dennis, 303-445-3599, 68360
 Westerdale, Matthew, 303-445-2313, 68440
 White, Janet, 303-445-2373, 68180
 Whitesell, Bruce, 303-445-2287, 68251
 Whitfield, Jim, 303-445-2630, 68322
 Wille, Kurt, 303-445-2285, 68240
 Williams, Collette, 303-445-3240, 68100
 Wiltshire, Richard, 303-445-2973, 68311
 Wittwer, Derek, 303-445-2978, 68311
 Wood, Chris, 303-445-3187, 68330
 Woodruff, Ryan, 303-445-2334, 68311
 Wormer, Jeff, 303-445-3691, 68311
 Wright, Jacque, 303-445-2604, 68010
 Wright, Joseph, 303-445-2463, 68250
 Wright, Patrick, 303-445-2288, 68250
 Wydoski, Richard, 303-445-2207, 68220

Y

Yepez, Shanna, 303-445-3485, 68170
 Yip, Curtis, 303-445-2224, 68290
 Yokoyama, Kenneth, 303-445-2014, 68140
 Young, Christi, 303-445-2561, 68010
 Young, Wayne, 303-445-2743, 68360
 Yu, Jie, 303-445-2991, 68312

Z

Zander, Jerry, 303-445-3088, 68170
 Zehfuss, Katherine, 303-445-2240, 68290
 Zeiger, James, 303-445-2850, 68440
 Zelenka, Bob, 303-445-2886, 68420
 Zlomke, Lonnie, 303-445-3087, 68170

86-68000

Technical Service Center

Lowell Pimley, Director		303-445-2720
86-68100	Civil Engineering Services Division	
	Dick LaFond, Division Chief	303-445-3226
86-68200	Water and Environmental Resources Division	
	Craig Albertsen, Division Chief	303-445-2526
86-68300	Geotechnical Services Division	
	Karen Knight, Division Chief	303-445-3044
86-68400	Infrastructure Service Division	
	Mark Boyle, Division Chief	303-445-2828
86-68010	Client Support and Technical Presentations Office	
	Christi Young	303-445-2561
	TSC Business Manager	
	Tom Luebke	303-445-2600
	Client Liaisons and Budget Support Staff	(see page 12)
	TSC Hazardous Waste Coordinator	
	Mike Simonavice, (86-68220)	303-445-2196

86-68000 Technical Service Center

Lowell Pimley, Director 303-445-2720

http://www.usbr.gov/pmts/tech_services/

The Technical Service Center (TSC) provides Reclamation-wide and Interior Department-wide scientific, applied research, and engineering services related to water resources management support; and provides technical support for broad areas of water and power resources management, including geotechnical engineering, dam safety, civil engineering, environmental engineering, mechanical and electrical engineering, social and environmental science, and laboratory services.

86-68010 Client Support and Technical Presentations Office

Christi Young 303-445-2561

http://www.usbr.gov/pmts/client_service/

This office provides a variety of support services to the TSC and its clients.

TSC Business Manager

Tom Luebke 303-445-2600

The Business Manager advises management on business strategies and tactics necessary for the successful operation of the TSC. Key aspects of TSC business include operating costs, billing rates, markets, staffing, outsourcing, and project delivery. Performance measures are developed, monitored, and reported on a real-time basis to aid individual managers in the implementation of the annual TSC business plan.

Client Liaisons

Client Liaisons coordinate workflow activities between the TSC and its clients. They are the primary points of contact for initiating work within multiple technical groups. Client Liaisons are involved in the following activities:

- Facilitating communication between clients and TSC teams
- Verifying product quality and client satisfaction
- Identifying the technical groups needed to perform the work
- Developing service agreements
- Monitoring schedules and budgets for ongoing work
- Distributing monthly management reports to clients and TSC team leaders
- Coordinating administrative functions such as establishing charge numbers

Budget and Program Analysts

Budget and Program Analysts assist client liaisons in the above activities and provide budget support to TSC team leaders.

Client Support Staff and Client Groups Represented

Client Liaison	Client	Program Assist Support
Tom Gill (86-68460) 303-445-2201	Great Plains Region	Emily Rademacher (86-68010) 303-445-3445
Connie Svoboda (86-68460) 303-445-2152	Lower Colorado Region	Susan Ocana (86-68010) 303-445-3178
Dan Maag (86-68170) 303-445-3084	Mid-Pacific Region	Janice Carson (86-68010) 303-445-3446
Paula Engel (86-68212) 303-445-2732	Pacific Northwest Region	
Chuck Borda (86-68212) 303-445-2728	Upper Colorado Region	Susan Ocana (86-68010) 303-445-3178
Elizabeth Cohen (86-68130) 303-445-3247	Dam Safety Security BIA SOD	Tyna Petersen (86-68010) 303-445-2573
Dave Fisher (86-68250) 303-445-2542	International Affairs	Andrea Moore (86-68010) 303-445-2952
Accounts Manager	Client	Program Assist Support
Dianne Parson (86-68010) 303-445-2302	Policy and Admin Office	Susan Ocana (86-68010) 303-445-3178
	Reclamation Other (TR, WO, MSO)	Elizabeth Snodgrass (86-68000) 303-445-2720
	Other Government Agencies (SOD)	Tyna Petersen (86-68010) 303-445-2573
	Other Government Agencies	-----
Christi Young (86-68010) 303-445-2561	TSC P&A	Elizabeth Snodgrass (86-68000) 303-445-2720
Jacque Wright (86-68010) 303-445-2604	Research Office	Janice Carson (86-68010) 303-445-3446
	K8T Advance Funding Accts	Emily Rademacher (86-68010) 303-445-3445
	K88 Working Capital Fund	-----

TSC Hazardous Waste Coordinator

Mike Simonavice (86-68220) 303-445-2196

This officer coordinates hazardous material disposal, medical surveillance, and environmental, industrial hygiene, occupational health, and safety services to meet Federal, State, and local government regulations.

Technical Presentations

<<http://www.usbr.gov/pmts/writing/>>

The technical presentations staff includes technical writers, editors, illustrators, and editorial assistants with extensive publications experience, varied technical backgrounds, and a broad knowledge of Reclamation policies, procedures, and projects. They are experts in Reclamation's Visual Identity requirements. Services and products provided by these staff members include:

- Technical reports
- Environmental impact statements and other environmental documents
- Manuals and handbooks
- Journal articles and proceedings
- Presentations and speeches
- Web page design and modification
- Exhibits and interpretive text
- Brochures
- Policy, instructional, and other nontechnical documents
- CD/DVD mastering and duplication
- Video editing and reformatting
- Multimedia enhancements
- Conversion of hardcopy documents into electronic formats
- Creation of documents using optical character recognition (OCR) applications
- Electronic graphic presentations
- Visual graphics for meetings, conferences, displays, litigation cases, and other purposes

Records Liaison

Jim Bailey (86-68010) 303-445-2704

The TSC Records Liaison provides internal oversight, support, and training for TSC managers and employees regarding the creation, usage, maintenance, retention, and disposition of official Federal records. Working with Reclamation's Records Manager (Information Management Division, 84-21300), the records liaison also provides litigation and discovery support, and fulfills internal and regional client requests for National Archives document retrieval, research, and analysis.

86-68100

Civil Engineering Services Division

Dick LaFond, Division Chief	303-445-3226
86-68110 Structural Analysis Group	
Barbara Mills-Bria	303-445-3229
86-68120 Plant Structures Group	
Al Bernstein	303-445-3275
86-68130 Waterways and Concrete Dams Group	
John Trojanowski	303-445-3263
86-68140 Water Conveyance Group	
Tim Brown	303-445-3709
86-68170 Estimating, Specifications, and Construction Management Group	
Bob Baumgarten	303-445-3076
<i>86-68172 Butte, Montana</i>	406-491-1933
86-68180 Materials Engineering and Research Laboratory Group	
William Kepler	303-445-2386

86-68110 Structural Analysis Group

Barbara Mills-Bria, 303-445-3229

http://www.usbr.gov/pmts/structure_analysis/

This group provides structural engineering specialists for the design and analysis of new and existing concrete arch, multiple arch, gravity and buttress dams, powerplants, pumping plants, and other buildings and structures.

The Structural Analysis Group has experience in structures designed and constructed using mass, roller-compacted, reinforced, post-tensioned, and prestressed concrete, steel, timber, and masonry materials. Group expertise includes:

- Seismic performance evaluations of structures
 - Finite element analyses
 - Nonlinear dynamic analysis of dams, appurtenances, and buildings
 - Seismic modification designs of dams, appurtenances, and buildings
 - Seismic risk analyses
-

86-68120 Plant Structures Group

Al Bernstein 303-445-3275

<http://www.usbr.gov/pmts/architecture/>

This group of structural and environmental engineers, architects, landscape architects, and technicians provides a wide array of services including:

- Project management and planning – appraisal, feasibility, and final design
- Building and site layouts and design. Expertise includes powerplants, pumping plants, water and wastewater treatment facilities, visitor centers, and office buildings
- Analysis and design of reinforced concrete, precast/prestressed concrete, masonry, structural steel, miscellaneous metalwork, and timber structures
- Analysis and design of conventional and advanced water, wastewater, and hazardous waste treatment systems, including membrane purification and concentrate management applications
- Analysis, design, and testing of pilot and demonstration-scale water treatment plants
- Conservation and water reuse and recycling program planning
- Rural water planning and planning designs for municipal, rural, and industrial (MR&I) systems
- Civil and structural design of switchyards and substations
- Recreation site development

- Wetlands site landscape design
 - Structural evaluation of existing facilities
 - Evaluation, design, and retrofit of water treatment systems for compliance with the Safe Drinking Water Act (SDWA) and Clean Water Act (CWA)
 - Evaluation, design, and retrofit of buildings and recreation facilities for accessibility compliance in accordance with guidelines established by the Architectural Barriers Act (ABA) and Americans with Disabilities Act (ADA)
 - Evaluation, design, and retrofit of buildings for life safety compliance in accordance with the National Fire Protection Code (NFPA 101 – Life Safety Code)
 - Technical assistance for contract development and administration, including statements of work, evaluation of proposals, and oversight as Contracting Officer's Technical Representative (COTR)
-

86-68130 Waterways and Concrete Dams Group

John Trojanowski 303-445-3263

<<http://www.usbr.gov/pmts/waterways/>>

This group specializes in structural and hydraulic analyses, evaluations, and designs of appurtenant structures (such as spillways and outlet works) for both concrete and embankment dams. In addition, the group works in concert with the Structural Analysis Group when designing or evaluating new and existing concrete dams. Typical structures analyzed, evaluated, or designed are composed of mass concrete, roller-compacted concrete, and reinforced concrete. The group analyzes, evaluates, and designs new structures and rehabilitates, removes, replaces, and upgrades existing structures.

The Waterways and Concrete Dams Group has the expertise to effectively undertake and complete technical work, ranging from long-term, complex activities to quick-turn-around activities. A large portion of the group's experience relates to safety of dams modifications to existing structures that are evaluated, analyzed, designed, and constructed in a risk framework.

86-68140 Water Conveyance Group

Tim Brown 303-445-3709

<<http://www.usbr.gov/pmts/conveyance/>>

This group provides engineering services for design and analysis of water conveyance systems, river improvements, and roads and bridges. The Water Conveyance Group performs work on:

- Irrigation and power canals and associated structures
- Transmission pipelines, pipe distribution systems, and pipeline control systems
- Tunnels, underground chambers, and shafts for all purposes

- Fish facilities (screens, ladders, and lifts)
- Hydraulic transient analysis (open channel and closed conduit)
- Water diversion structures
- Wetlands water conveyance features
- Bridge design
- Roadway design

The Water Conveyance Group also provides engineering support for inspection and rehabilitation of existing facilities, including open channels, canal automation and control systems, roads, bridges, tunnels, underground structures, diversion dams, and pipelines.

In concert with diverse professional disciplines from the TSC and other Reclamation offices, the group provides planning engineering services to integrate physical resources and environmental intangibles into viable alternative solutions.

86-68170 Estimating, Specifications, and Construction Management Group

Bob Baumgarten 303-445-3076

<http://www.usbr.gov/pmts/estimate/>

This group provides numerous distinct areas of services from project conception through design and construction to project close-out. The group prepares Independent Government Cost Estimates (IGCE) at the appraisal, feasibility, percent design, prevalidation, engineers estimate, and contract modification levels. Services include preparing or reviewing detailed cost estimates, providing support for negotiated procurement, and analyzing bids and proposals. The group tracks cost indexes, which provide a rapid means of determining the current cost of construction of various properties based on previous estimates. This group maintains selected guide specifications and coordinates, prepares, and reviews specifications for a variety of purposes:

- Modify embankment dams and concrete dams for safety; to rehabilitate and improve roads and bridges
- Maintain, rehabilitate, and improve water conveyance systems infrastructure, powerplant and pumping plant structures, substations, and switchyards
- Clean up hazardous waste sites
- Plants and architectural buildings

This group facilitates Group Objectives and Logistics (GOAL) teams and Project Alternative Solutions Studies (PASS). This group applies portions of the value method and other strategies with multi-disciplined teams using the GOAL and/or PASS process. Studies can be conducted for programs, projects, systems, products, equipment, buildings, facilities, services, or supplies to improve performance, reliability, quality, safety, and reduce life-cycle costs. Although teams using the GOAL and/or PASS process typically save both time and money in the planning and design process, these tools are an enhancement to, not a replacement for, conducting a required Value Study by the Value Program.

The group provides a full range of construction management type services and support for design activities. Construction/PMP/project administration, and environmental experts provide specific activities including:

- Constructability and specifications reviews
- Construction scheduling, tracking, and time impact analyses
- Contract dispute analysis and claims resolution
- Developing and monitoring detailed workplans, budgets, contract correspondence and reviewing contractor' submittals
- Interagency support for BIA, NPS, FWS, and EPA
- Project Management/Earned Value Analysis

86-68180 Materials Engineering and Research Laboratory Group

Bill Kepler 303-445-2386

<http://www.usbr.gov/pmts/materials_lab/>

This group provides specialized expertise on all of the engineering materials used to build Reclamation facilities. It provides a wide variety of services and assistance related to testing and evaluating engineering materials. The Materials Engineering and Research Laboratory Group is divided into seven teams that work in different areas:

- **Corrosion Technology team**—designs and specifies corrosion monitoring and cathodic protection systems. In addition, they evaluate existing cathodic protection systems, and investigate corrosion problems.
- **Coatings Technology team**—prepares specifications and reviews submittals pertaining to paints and coatings. They also conduct applied research to evaluate proposed coatings systems. This team also provides technical and troubleshooting assistance related to paints and protective coatings.
- **Geosynthetics Technology team**—conducts applied research to evaluate new, improved, or conventional materials and methodologies to effect more economical construction, less frequent maintenance, and new repair or design approaches. This team also provides technical and troubleshooting expertise related to the proper use of geosynthetic/polymeric materials (sealants, waterstops, roofing, gaskets, and plastic pipe).
- **Concrete Technology team**—evaluates and tests concrete and concrete making materials, prepares and reviews specifications, and provides concrete mixture proportions for unusual design or construction requirements. It also provides concrete technology training, supplies inspection and calibration services, and assists with procurement of unique testing equipment.
- **Rock and Soil Testing team**—tests and evaluates the physical properties of rock and soils.

- **Concrete Repair team**—provides guidance and technical advice in failure analysis, condition assessment, maintenance, repair, rehabilitation, and preservation of concrete infrastructure.
- **Structural Testing and Evaluation team**—provides unique testing capabilities for the evaluation **of concrete and steel**. Capabilities include: dynamic loading, non-linear loading, biaxial, triaxial, and shear loading, testing unique structures, field dynamic loading, and nondestructive testing capabilities.

Standard and customized testing is available in the areas listed above. Special equipment includes a 5-million-pound universal large-scale testing machine, a vibration laboratory, and walk-in environmental and adiabatic test chambers.

86-68200

Water and Environmental Resources Division

Craig Albertsen, Division Chief	303-445-2526
86-68210 Water Resources Planning and Operations Support Group	
Del Smith	303-445-2516
<i>86-68212</i> <i>Economics and Resource Planning Team</i>	
Steve Piper	303-445-2736
86-68220 Environmental Applications and Research Group	
Chris Holdren	303-445-2178
<i>86-68221</i> <i>Water Treatment Engineering Research Team</i>	
Chris Holdren	303-445-2178
86-68240 Sedimentation and River Hydraulics Group	
Tim Randle	303-445-2557
86-68250 Flood Hydrology and Emergency Management Group	
Dave Fisher	303-445-2542
<i>86-68251</i> <i>Remote Sensing and Geographic Information Team</i>	
Doug Clark (Acting Team Leader)	303-445-2271
86-68290 Fisheries and Wildlife Resources Group	
Sharon Taylor	303-445-2052

86-68210 Water Resources Planning and Operations Support Group

Del Smith 303-445-2516

http://www.usbr.gov/pmts/water_use/

This group provides hydrologic engineering technical services to decisionmakers on water resources planning and management, reservoir and river system operations, water supply issues, surface water and groundwater uses, hydrological watershed analysis, watershed hydrology, water conservation planning, water and land resources development and suitability assessments.

The professional staff includes hydraulic engineers, hydrologists, agricultural engineers, environmental engineers, geologists, physical scientists, and engineering technicians.

The Water Resources Planning and Operations Support Group also develops and applies innovative methods for water resource investigations, including advanced development and application of water resource computer modeling systems, analysis tools, and integrated data management systems.

Specific areas of technical expertise include:

- Technical team leadership and/or participation in complex water resources investigations and feasibility studies
- Studies of stream flow and aquifer conditions to determine natural flows, consumptive uses, influences of changing watershed conditions on runoff, water quality, and aquifer recharge
- Modeling tools and decision support for integrated operations of river systems, multipurpose reservoirs, water delivery and return flows, and conjunctive surface and groundwater use
- Evaluating beneficial and consumptive uses of water for agricultural, domestic, commercial, industrial, hydropower, environmental, recreational and other purposes
- Analysis of availability and dependability of water supplies for meeting historical, present and future water demands including uncertainty and risk analysis
- Utilization of advanced mathematical techniques such as stochastic hydrology and optimization for managing water resources and analysis of improved water operations to conserve water supplies and manage water more efficiently to meet competing demands
- Evaluation, quality assurance, and enhancements of hydrological databases including measure and natural streamflow, water uses and demands, precipitation and evaporation evapotranspiration
- Technical assistance for design, construction, operations and maintenance of wells, well fields, subsurface irrigation drainage, dewatering, and infiltration systems
- Providing support to Native American water right negotiations

- Conducting drainage investigations, canal seepage testing, and analysis to assess infiltration seepage losses, drainage systems, groundwater flow, and quality
- Conducting water supply and use investigations for National Environmental Policy Act (NEPA) compliance to support construction, operation, and maintenance planning activities
- Laboratory analyses on soil and sediment for land resource and watershed investigations including chemical and physical properties, particle size distribution, and leachate trace element
- Investigating soil, water, and plant interactions and compatibility on lands experiencing crop production problems, salinity control measures, and for revegetation studies
- Providing Reclamation-wide technical guidance and standards for hydrologic information, supply and utilization, surface water/groundwater studies, land resources, irrigation suitability, and drainage investigation
- Providing technical training on request for Reclamation staff and stakeholders
- Conducting applied research and technology advancement in the areas of water resources planning and operations
- Evaluating opportunities for improved water delivery and water use efficiency in water conservation planning activities

86-68212 Economics and Resource Planning Team

Steve Piper 303-445-2736

< <http://www.usbr.gov/pmts/economics/> >

This team provides a wide range of expertise in water resource-related planning, economic and financial analyses, recreation, cultural resources, multidisciplinary team management, public involvement, conflict resolution, social analysis, facilitation, and conference planning. It provides a wide range of analyses to assist in decision making for project planning and evaluation. The team also provides studies and other associated services necessary for compliance with the National Environmental Policy Act (NEPA). The Economics and Resource Planning Team staff consists of a broad range of experts providing the following services:

- Economists who derive benefit-cost analyses for feasibility studies, apply economic models to estimate NEPA impacts in environmental impact statements, compute ability-to-pay of irrigators and rural domestic water users, determine the value of environmental resources such as wetlands and endangered species, determine recreation use benefits, value the costs of hydropower generation changes, evaluate actions affecting Native Americans, prepare project final cost allocations, develop economic standards for land classification, evaluate the economic benefits of improvements in water quality, and provide economic decision making for Safety of Dams Programs. We also have agricultural and natural resource economists, all with advanced degrees and many years of experience.

- Cultural resources staff that provide expertise in historic, architectural, archeological, and ethnographic resources. Services include comprehensive field surveys; archival research; consultation with the Advisory Council on Historic Preservation and with Tribal and State Historic Preservation Offices; determinations of significance; repository evaluations; National Register listings; curation and compliance with the National Historic Preservation Act; historic context statements, and oral histories.
- Public involvement staff who provide expertise in soliciting public opinion, conflict resolution, consensus building, and issue identification. The group assists in scoping for environmental compliance, and developing and implementing public involvement programs.
- Social analysis staff who evaluate societal changes resulting from proposed or ongoing Reclamation activities. They provide consultation and analyses for NEPA compliance and planning studies, including environmental justice and Indian Trust Assets.

86-68220 Environmental Applications and Research Group

Chris Holdren 303-445-2178

<http://www.usbr.gov/pmts/eco_research/>

This group uses applied research to examine the interrelationships between the environment and regulated aquatic systems. Studies and research conducted by the group help Reclamation staff, stakeholders, and cooperators understand environmental conditions and issues, develop measures to protect and enhance water quality, and adopt solutions to improve water deliveries. The group provides techniques to control the spread of invasive species, including quagga and zebra mussels, and provides recommendations on reservoir management measures to help maintain or enhance water deliveries.

The Environmental Applications and Research Group's specialized expertise includes:

- Aquatic ecology
- Aquatic, terrestrial, and riparian plant ecology and management
- Bioassessment
- Environmental chemistry
- Invasive species management
- Reservoir management
- Water quality
- Wetlands construction and management
- Drainage analysis

- Evaluating water, soil, sediment, and biological characteristics of regulated systems to assist with environmental assessments, environmental impact statements, and resource management plans
- Planning investigations for aquatic, wetland, and riparian restoration; point and non-point source best management practices (BMPs); and watershed loading plans (TMDLs)
- Numerical, statistical, chemical, and hydrodynamic models to evaluate water quality in reservoirs, rivers, and other aquatic systems

Our specialized resources and equipment include biological laboratories, a greenhouse, environmental chambers for plant and aquatic weed studies, boats, and extensive field monitoring and collection equipment.

Water Treatment Engineering Research Team

86-68221 Chris Holdren 303-445-2178

<http://www.usbr.gov/pmts/water/>

This team researches and designs desalination, water treatment, and wastewater treatment systems. These systems remediate water containing hazardous chemicals and compounds to meet current requirements, including the Safe Drinking Water Act, Clean Water Act, and quality requirements for water reuse or discharge. The group's work includes researching pretreatment techniques, chlorine resistant membranes, concentrate disposal techniques, renewable energy related to treatment, methods for reducing fouling, reducing operation and maintenance costs, and identifying and resolving environmental issues. Research contracts with universities, nonprofit organizations, and private industry are managed to cost share research and testing projects.

The Water Treatment Engineering Research Team's services include:

- Advanced treatment workshops on desalination, reuse, concentrate management, and other issues
- Research and pilot studies, laboratory and demonstration testing
- Testing and demonstrations of treatment for brackish water, seawater, irrigation return flows, produced water, and reclaimed water
- Standards setting
- Technology transfer

The team installs and tests pretreatment systems using advanced water treatment and desalting pilot plants, low-grade heat brine disposal systems, salt-gradient solar ponds, and renewable energy-driven pumping and desalting systems.

86-68240 Sedimentation and River Hydraulics Group

Tim Randle 303-445-2557

<http://www.usbr.gov/pmts/sediment/>

This group conducts studies on how rivers and reservoirs have or will respond to changes in river flow, sediment supply, or channel modification. Studies are prepared for a variety of purposes including operation and maintenance, dam safety, and fish and wildlife habitat restoration. Many studies focus on Reclamation facilities; their physical impact on river channels and endangered species habitat, recreation, wetlands, and cultural resources.

The Sedimentation and River Hydraulics Group assists in planning effective water and sediment management programs including:

- Reservoir sedimentation surveys
- Sediment management studies for rivers, reservoirs, and structures
- Flood inundation mapping and emergency planning
- Reservoir and river channel surveys
- GIS and data analysis
- Geomorphic analysis
- Research and development:
 - Numerical model development
 - River channel process investigations
 - River structure design criteria
- Numerical Modeling (1D, 2D, and 3D):
 - River and floodplain hydraulics
 - Sediment transport
 - Channel migration
 - Vegetation and habitat
- Environmental impact analysis
- Dam safety and loss of life analysis.

Sediment impact studies of rivers and reservoirs link changes in stream flow and sediment supply to processes controlling changes in channel shape and bank erosion. Applied research and customized investigations range from simple technical advice to in-depth, multi-year studies integrating diverse disciplines.

Investigations focus on the hydraulic and sediment impacts to fish and wildlife habitat, recreation, wetlands, or cultural resources and can incorporate assessment, planning, and design of water resource facilities. Staff participate in interdisciplinary and interagency teams in evaluating ecological systems and providing input for environmental impact statements and assessments.

Dam break and flood inundation studies are used for emergency planning, hazard classification, and guidance in selecting risk reduction alternatives for dams. The group has also developed procedures for estimating the loss of life from dam failures.

A wide range of modeling and analysis software tools are applied including an extensive suite developed and maintained in-house. In-house software allows us to customize and optimize numerical models to solve specific problems. Software packages are designed to work together and provide an integrated view of river hydraulic and morphological processes.

86-68250 Flood Hydrology and Emergency Management Group

Dave Fisher 303-445-2542

<http://www.usbr.gov/pmts/flood/>

This group provides technical investigations, designs, reviews, and related work in flood hydrology, hydrometeorology, paleohydrology, meteorology, and emergency management.

The Flood Hydrology and Emergency Management Group provides information on a range of flood-related hydrology and emergency management including:

- Extreme precipitation and extreme flood event studies up to the probable maximum flood
- Hydrologic input for risk assessments of dams
- Inflow design hydrographs and cross drainage analyses
- Flood frequency and statistical hydrological analyses
- Early warning system planning, design, installation, and maintenance
- Drought index development and application, hydrometeorology, and hydrology research
- Various other activities associated with flood hydrology
- Conducting fluvial geomorphology studies and paleoflood hydrology investigations
- Meteorological water analysis and forecasting
- Cloud physics analyses of precipitation processes
- General meteorological studies including field program evaluation and analysis
- NEXRAD precipitation processing application
- Emergency Action Plan (EAP) development

- EAP exercise development and facilitation including orientation, tabletop, functional, and full scale exercises
- Continuity of Operations (COO) Planning and support

The staff provides expertise for the hydrological aspects of Reclamation's Dam Safety Program and services to other Department of the Interior agencies as well. They also develop flood hydrology, hydrometeorology, and dam safety standards and criteria and coordinate these with other Federal agencies. General meteorological studies are also performed. Emergency Management activities from planning to operations including policy development/support are also conducted.

Remote Sensing and Geographic Information Team

86-68251 *Vacant*

<http://www.usbr.gov/pmts/rsgis/>

The Remote Sensing and Geographic Information Team has over 30 years of experience and service using a large variety of:

- Image processing capabilities
- Satellite mapping
- Geographic Information Systems (GIS)
- Global Positioning Systems (GPS)
- Airborne Videography
- Photography, LiDAR and surveying contracts
- Data base development
- Thermal analysis
- Photogrammetry
- Other geospatial technologies

Our staff members are scientists specializing in geography, cartography, photogrammetry, forestry, remote sensing, GIS, technical writing, hydrology, biology, and computer science. We often assist clients with all types of mapping projects and data base development. We have many reports available to give examples of large database development projects, assistance with EIS's, river mapping, canal seepage studies, vegetation mapping, irrigated lands inventory and research on state-of-the-art technology.

We provide a large array of services to Reclamation offices, and other DOI offices throughout the 17 Western States and abroad. In addition, we have an in-house contract staff of mapping experts and technicians that are available to staff up and down on short notice to meet any client needs.

Timely and accurate ecosystem information is vital to a good resource management program. Remote Sensing (aerial photography, satellite mapping, airborne videography, thermal, etc) captures and provides up-to-date data quickly and cost effectively. A GIS can be used for manipulation, mensuration, and scientific analysis of remotely sensed data.

A variety of data themes such as soils, slope, aspect, hydrology, and land use practices can be linked, integrated and examined in ways that were difficult or impossible only a short time ago. Any spatially located variable can be linked, and become a part of a GIS database. Various combinations of mapped variables can be used by the GIS to model and analyze a wide variety of geographic problems.

Our staff can best help clients by becoming involved in the initial planning stages of a new project. Proper planning is critical for a successful project. In the planning stage, we can acquaint the client with the full range of available technology and plan the tasks so as to provide a cost effective and superior product.

Typical RSGIS applications include those designed to map and monitor agricultural practices, natural vegetation, riparian ecology, water quality, wildlife and fisheries management, land suitability for irrigation, hydrology and water resources, water body limnology, long term monitoring, facilities mapping as well as many other applications.

We coordinate the Bureau of Reclamation Geographic Information System (BORGIS) and the Reclamation-wide IT business case for GIS. BORGIS's purpose is to coordinate GIS hardware and software and systems security, as well as begin the efforts for a Reclamation wide enterprise database. In addition, we represent Reclamation with the Department of Interior on ad-hoc committees such as the Base Cartography coordination committee, the Remote Sensing coordination working group, Wetlands subcommittee, and enterprise, geographic information management (EGIM) team.

86-68290 Fisheries and Wildlife Resources Group

Sharon Taylor 303-445-2052

< <http://www.usbr.gov/pmts/fish/> >

This group conducts investigations to understand and develop technologies to reduce impacts, sustain, and improve aquatic and terrestrial communities associated with Reclamation's water development facilities and operations. Group member fisheries scientists, wildlife biologists, NEPA specialists, and environmental chemists work together with hydraulic, civil and design engineers to perform studies and projects that provide information for Reclamation to maintain water and power deliveries in an environmentally sound manner.

The Fisheries and Wildlife Resources Group provides specific research and services, including:

- Investigating fishery and avian interactions with Reclamation operations and facilities
- Evaluating habitat needs, use, and upstream-downstream movements for native and rare bird and fish species

- Assessing and assisting in designing fish protection technology (fishways, fish louvers, crowders, and screens)
- Evaluating new fish screening technology and other fish protection methods for irrigation canal diversions
- Performing NEPA process and documentation: Environmental Impact Statements, Environmental Assessments, Categorical Exclusions, Section 7 ESA Consultation
- Determining methods for separating and removing debris, invasive species (including exotic mitten crabs), and other unwanted materials from fish at protection facilities
- Aquaculture of fish for live evaluation testing in hydraulic models
- Developing a fish friendly pumping technology for water diversions
- Performing environmental chemistry studies and interpretations
- Testing, validating, and designing environmental, biological, and fisheries computer models

The group's specialized resources include boats (electrofishing, inflatable, survey), DIDSON (Dual Frequency Identification Sonar) underwater imaging system, hydroacoustic survey gear; avian, herpetological, and fisheries biotelemetry systems, fish and bird sampling equipment, water quality probes, laboratory research equipment, and aquaculture facilities.

86-68300

Geotechnical Services Division

Karen Knight, Division Chief	303-445-3044
86-68300 Risk Advisory Team	
Bill Engemoen	303-445-2960
Bill Fiedler	303-445-3248
Dan Osmun	303-445-2980
86-68311 Embankment Dams & Geotechnical Engineering Group 1	
Dennis Hanneman	303-445-2958
86-68312 Embankment Dams & Geotechnical Engineering Group 2	
Jeanne Major	303-445-2972
86-68313 Embankment Dams & Geotechnical Engineering Group 3	
Mike Gobla	303-445-3032
86-68320 Engineering Geology Group	
Lloyd Crutchfield	303-445-3074
<i>86-68322 Geotechnical Computer and Technical Support Team</i>	
Lloyd Crutchfield	303-445-3074
86-68330 Seismotectonics and Geophysics Group	
Dan Levish	303-445-3175
86-68360 Instrumentation and Inspections Group	
DeWayne Campbell	303-445-3052

86-68300 Risk Advisory Team

Bill Engemoen 303-445-2960

Bill Fiedler 303-445-3248

Dan Osmun 303-445-2980

The Risk Advisory Team will provide the TSC and the Dam Safety Office a focused development of risk management strategy for the agency. Three key areas identified for the team to advance within this risk management strategy are: staff development, methodology development, and outreach.

Embankment Dams and Geotechnical Engineering Groups

86-68311 Group 1 — Dennis Hanneman 303-445-2958

86-68312 Group 2 — Jeanne Major 303-445-2972

86-68313 Group 3 — Mike Gobla 303-445-3032

<http://www.usbr.gov/pmts/geotech/>

These highly experienced groups provide cost-effective geotechnical studies and analyses for embankment dams and a wide range of other water resources and environmental mitigation projects. The groups are substantially involved in the support of Reclamation's Dam Safety Program. The groups perform dam safety evaluations, including probabilistic risk analysis, for over 300 high and significant hazard embankment dams in Reclamation's current inventory. The groups also provide design support services for dam safety modifications to Reclamation and other agency dams. The groups provide experienced team leaders to lead multidisciplinary technical teams actively engaged in the support of Reclamation's mission, as well as those at other Federal agencies and tribal authorities.

The Geotechnical Engineering Groups' projects include:

- Embankment dams and foundations (geotechnical analysis and design of new and modifications to existing dams, construction support services, dam safety evaluations including probabilistic risk analysis, and security evaluations)
- Embankment dam risk analysis
- Emergency incident response
- Geotechnical analysis and design of foundations for concrete dams, pumping plants, powerplants, and other civil structures, canals, pipelines, and related features
- Environmental restoration of mining and other hazardous waste sites
- Natural soil and rock slope, including landslide, stability analysis, and improvement
- Underground excavations, rock slopes, landslides, and other projects requiring the application of rock mechanics

The highly experienced geotechnical engineering staff also has specialized expertise in the areas of static and dynamic (earthquake loading) stability analyses of embankments and natural slopes; numerical modeling of structures and foundations; groundwater, dewatering, and seepage analyses related to structures; geosynthetics design; security-related evaluations; and applied rock mechanics for foundations, slopes, and tunnels.

86-68320 Engineering Geology Group

Lloyd Crutchfield 303-445-3074

<http://www.usbr.gov/pmts/geology/>

This group leads planning, executing, and coordinating geologic site characterization activities, evaluates, and portrays geological and geotechnical conditions. Geologic services are integrated with seismotectonic and geophysical studies. The Engineering Geology Group provides a range of services, including:

- Field mapping and subsurface exploration and sampling
- Close-range stereographic geologic mapping
- Computer-aided design (CAD) and computer-aided design and drafting (CADD) three-dimensional modeling using GIS, GPS, and related databases for subsurface conditions, pollutants, and other physical data
- Geologic interpretations for planning, design, and specifications
- Foundation mapping and approval during construction
- Geologic analyses for rock mechanics issues, blasting and grouting programs, foundations, borrow investigations, seepage studies, dewatering systems, and environmental restoration
- Photogrammetric modeling and geologic analysis

The Engineering Geology Group's investigation and analysis expertise includes dams; water conveyances; bridge, building, and plant foundations; excavation stability; landslide studies; and characterizing sites for hazardous and toxic wastes. The group has broad expertise in technical project management.

Geotechnical Computer and Technical Support Team

86-68322 Lloyd Crutchfield 303-445-3074

http://www.usbr.gov/pmts/geotech_support/index.html

This group supports the geotechnical, geological, geophysical, and instrumentation and inspections groups in the Geotechnical Services Division and to other clients throughout Reclamation.

The Geotechnical Computer and Technical Support Group is integrated with the Geotechnical Services groups to support a wide variety of activities including:

- Two- and three-dimensional modeling and analyses for material and quantity estimates using state-of-the-art modeling packages such as Auto Cad (Civil 3D) and MicroStation (InRoads) programs
- Use of Global Positioning Systems (GPS) surveys and point cloud data for foundation and surface mapping
- Three-dimensional terrain modeling analysis for embankment dams, foundations, borrow areas, rock abutments, and foundations for rock mechanics issues, and environmental restoration
- Computer-aided design and drafting for final specifications drawings
- Contouring and development of three-dimensional surfaces for presentation of alignments, profiles, and cross sections
- Image processing

The group's staff members include highly trained technicians, scientists, and draftsmen with significant experience in the geotechnical, geological, and geophysical fields.

86-68330 Seismotectonics and Geophysics Group

Dan Levis 303-445-3175

http://www.usbr.gov/pmts/tech_services/8330.html

This group provides specialized geological, geomorphological, seismological, and geophysical expertise for site-specific and regional earthquake and geomorphology studies, Quaternary geology, and engineering geophysics.

Information and services that the Seismotectonics and Geophysics Group provides include:

- Paleoflood hydrology for assessment of extreme flood hazards
- Natural hazards for risk analysis through probabilistic earthquake hazard studies
- Numerical and statistical analysis and modeling, including ground motion synthesis, and seismic tomography
- Earthquake loadings, including site-specific ground motions and response spectra
- Probabilistic risk analyses for dam safety and design evaluations
- Seismic monitoring of Reclamation facilities for real-time structural response information for post-earthquake assessment and emergency notification
- Paleoseismic investigations to define earthquake hazards

- Fluvial geomorphology, geomorphological processes, and Quaternary history for stream evaluation and restoration, site characterization, environmental impact, and other investigations
- Complete geophysical site characterization services including data acquisition, processing, analysis, and integration with borehole and other geologic and hydrologic information
- Surface, borehole, cross-hole, and surface-to-borehole geophysical surveys to determine a wide range of subsurface physical properties and conditions, including centimeter-level global positioning system surveys in support of scientific and engineering investigations

The group directly operates regional seismic networks in the Western United States and maintains an extensive network of digital and analog strong-motion recorders.

86-68360 Instrumentation and Inspections Group

DeWayne Campbell 303-445-3052

<http://www.usbr.gov/pmts/instrumentation/>

This group provides a wide range of instrumentation and inspection-related services for dams and other facilities.

Instrumentation-related services include:

- Routine dam performance monitoring:
 - Reviewing data for validity and performance anomalies
 - Troubleshooting questionable data to assure accurate information
 - Maintaining a database of visual and instrumental monitoring information
 - Reporting and presenting routine data results
- Periodic in-depth analyses of monitoring results, including dam safety analyses
 - Participating in the failure mode analysis/performance parameter process
 - Participating in comprehensive facility reviews
 - Instrumentation design:
 - Determining the type, number, location, and reading frequency of instruments required
 - Preparing drawings and specifications for procuring, installing, maintaining, and repairing instrumentation systems
 - Designing automated data collection and transmission systems for both short and long term monitoring
- Field assistance including:
 - Calibrating, installing, and inspecting instrument systems
 - Maintaining lab facilities for instrument repair, testing, calibration, and assembly
 - Troubleshooting and consulting on special problems
 - Providing training on instrumentation matters

The group's engineers and technicians have extensive experience in designing, installing, and monitoring over 70 types of instruments used to provide information in categories such as water pressure, earth/total pressure and load, deformations (internal

and surface), temperature, and seepage quantity and quality. The group also has expertise developing monitoring systems for special purposes and unique applications.

Registered professional engineers perform a variety of activities, including:

- Coordinating and performing dam safety and operation and maintenance (O&M) inspections of Reclamation dams as a part of the Comprehensive Facility Review Program, and inspections for other Department of the Interior and other agency dams upon request
- Participating in transfer inspections of facilities from construction to O&M status
- Performing preliminary hazard classifications and hazard reassessments of low- and significant- hazard dams
- Providing technical advice and assistance on O&M items
- Updating the Technical Priority Ratings of all Department of the Interior dams

Coordinating and providing training to Reclamation staff and others, including:

- Annual Safety Evaluation of Existing Dams (SEED) seminars for Federal, State, and private personnel, and biennial seminars for international personnel
- Onsite O&M training for dam tenders, operating personnel, and water systems managers
- Client-tailored onsite dam safety and emergency management training programs domestically and abroad

The group also provides data and document management services, including:

- Development and maintenance of the Dam Safety Information System (DSIS) and the Dam Safety Document Management System (DSDaMS) databases
 - Maintenance and updating of the official record copies of Standing Operating Procedures, and maintaining storage of Designer's Operating Criteria and Design Summaries
 - Development and maintenance of O&M technical standards, bulletins, and guidelines
 - Maintenance of other dam safety and O&M files and databases of information
-

86-68400

Infrastructure Services Division

Mark W. Boyle, Division Chief	303-445-2828
86-68410 Mechanical Equipment Group	
Dave Hulse	303-445-2881
86-68420 Hydraulic Equipment Group	
Dan Drake	303-445-2874
86-68430 Electrical Design Group	
George Girgis	303-445-2310
86-68440 Hydropower Technical Services Group	
Jim Zeiger	303-445-2850
86-68460 Hydraulic Investigations and Laboratory Services Group	
Bob Einhellig	303-445-2142

86-68410 Mechanical Equipment Group

Dave Hulse 303-445-2881

<http://www.usbr.gov/pmts/infrastructure/mechanical/>

This group provides engineering services for mechanical equipment and systems related to new and existing dams, powerplants, pumping plants, fish handling facilities, water conveyance structures, and other building facilities. They also provide factory inspection and equipment installation expertise; operation and maintenance support, finite element studies; and produce technical manuals. Systems and equipment that the Mechanical Equipment Group designs and services include:

- Compressed air, cooling water, service water, oil lubrication, fire suppression, gravity drainage, heating, ventilating, air conditioning, and building plumbing systems
- Cranes and hoists
- Engine generators
- Trash rakes, conveyors, and traveling water screens
- Fish and moss screens and fish handling equipment
- Water temperature control devices and selective withdrawal systems
- Water flow meters and temperature sensors
- Stoplogs, draft tube gates, and bulkhead gates

Mechanical operation and maintenance (O&M) support and program services are provided in coordination with the Power Resources Office. These include Facilities Instructions, Standards, and Techniques (FIST) volumes, Power Equipment Bulletins (PEBs), power O&M reviews and incident investigations, technical advice and assistance, training, unit alignment and balancing, mechanical speed governor adjustment, unit vibration testing and analysis, welding procedure analysis, penstock inspection program management, penstock guard gate and valve testing program management, pressure vessel inspection, and underwater inspection services using a remote-controlled vehicle.

86-68420 Hydraulic Equipment Group

Dan Drake 303-445-2874

<http://www.usbr.gov/pmts/infrastructure/hydraulic/>

This group provides mechanical engineering services for water delivery equipment. Engineering services include budget estimating, design, and specifications writing, and equipment installation and field assistance. The Hydraulic Equipment Group's services include engineering analysis and design for:

- Hydraulic transients in power system waterways including stress analysis

- General stress analysis for large gates, turbine/pumps, and other equipment
- Equipment life analysis using field test data, fatigue analysis, and fracture mechanics
- Onsite testing for pumps and turbines during new equipment startups
- Performance testing for pumps and turbines to confirm warranted characteristics

The staff works on a variety of equipment including pumps, hydroelectric turbines, pump-turbines, and turbine governors; large custom-designed gates and commercial slide gates; sleeve, hollow-jet, and butterfly valves; and steel penstocks.

86-68430 Electrical Design Group

George Girgis 303-445-2310

http://www.usbr.gov/pmts/infrastructure/electrical_design/

This group provides designs, drawings, technical specifications, and construction/installation support for electrical equipment and systems. The Electrical Design Group's electrical engineering services include:

- Generator rewind/uprates
- Neutral grounding transformers
- Power transformers
- Power circuit breakers
- Substations, switchyards, switchgear, and station service equipment
- Excitation (voltage regulator) and governor systems
- High and medium voltage cable and bus
- Motor control centers, adjustable speed drives, and reduced voltage starters
- Factory inspection of electrical equipment
- Warranty inspections of generators
- Control system interface
- Wiring checkout, startup, and acceptance testing
- On-site inspection services
- Design Summaries, Designer Operating Criteria, and Standing Operating Procedures

- Support of Reclamation's Western Electricity Coordinating Council control system requirements

The group also provides electrical engineering services for low voltage circuit breakers; station batteries and battery chargers, distribution panelboards; dry type transformers; electrical equipment grounding; instrumentation and annunciation systems; and electrical features of mechanical equipment (such as speed governors, cranes, gates, valves, heating and ventilation, elevators, trash rakes, etc.).

86-68440 Hydropower Technical Services Group

Jim Zeiger 303-445-2850

<http://www.usbr.gov/pmts/hydroelectric/>

This group performs a wide range of electrical hydropower technical services including onsite technical assistance, diagnostics, troubleshooting, failure investigation, and inspection. It also offers program consultation, training, unique in-house support services, power system studies, and design and installation support for plant Supervisory Control and Data Acquisition (SCADA) systems.

The group's electrical engineering services include:

- Power system modeling (e.g., arc-flash analysis, fault studies, circuit transient, synchronous stability, harmonic system performance, insulation coordination, power flow studies, and facility design rating reviews)
- Protective relay system recommendations and settings
- Protective relay system calibration, functional testing, and commissioning
- SCADA system and Programmable Logic Controller (PLC) system design
- SCADA system evaluation, analysis, software support, and security accreditation
- Plant automation, embedded systems, and efficiency-based water/power control and modeling software
- Technical support for Reclamation's Western Electricity Coordinating Council power reliability requirements
- Machine startup, acceptance, and diagnostic testing
- System staged-fault testing
- Voltage regulator, power system stabilizer, and speed governor tuning
- Equipment and personal protective safety grounding evaluation
- Plant control battery system diagnostics
- In-house electrical/electronics equipment design and fabrication

Machine condition monitoring

- Life extension
- Development of related training

The group also coordinates Reclamation's technical power program services and hydropower research efforts to focus on innovative solutions for power facilities in the following areas:

- Electrical operation and maintenance (O&M) support and program services are provided in coordination with the Power Resources Office. These include Facilities Instructions, Standards, and Techniques (FIST) volumes, Power Equipment Bulletins (PEBs), power O&M reviews and incident investigations, technical advice and assistance, training, Doble testing, infrared testing services, arc flash studies, and speed governor adjustment.
- Power apparatus (rotating machinery, power transformers, electronics, etc.)
- Electrical insulation systems including rotating machinery and cable systems
- Excitation systems (voltage regulators) and speed governor systems including related power system stability and controls
- Automatic generation control, water and power scheduling, and plant optimization

This group also maintains extensive power, electronics, controls, and computer laboratories and research facilities, which enable the group to support project needs in an efficient, cost-effective manner.

86-68460 Hydraulic Investigations and Laboratory Services Group

Bob Einhellig, Manager 303-445-2142

http://www.usbr.gov/pmts/hydraulics_lab/

This group uses unique expertise and capabilities in hydraulics and fluid mechanics to investigate and develop application-oriented solutions to water resources problems. Capabilities include physical modeling, computational fluid dynamics modeling, field investigations, and analytical studies. Application focus areas include:

- **Water Conservation** – Canal automation and operations, water measurement technology and field evaluations, groundwater and drainage modeling, and water management training workshops
- **Environmental Hydraulics** – Reservoir selective withdrawal, fish protection and passage, design support and field evaluations, river restoration, habitat model verification data collection, reservoir density current measurements, total dissolved gas abatement, river sediment flushing, and reservoir and river sedimentation related to hydraulic structures.

- **Testing and Evaluation of Hydraulic Facilities** – Hydraulic design, operation and maintenance troubleshooting, hydraulic structures and machinery improvements, flow-induced vibration, fatigue failure evaluations, cavitation analyses and research, and selective withdrawal structure performance evaluations.
- **Hydroacoustic Applications** – Our staff have been involved in developing and using acoustic flow measurement technology since the early 1970s. We use a variety of state-of-the-art acoustic Doppler instruments to collect hydraulic data for laboratory and field studies.
- **Computational Fluid Dynamics (CFD) Modeling** – Commercially available modeling software, FLOW-3D® is employed to study a variety of hydrodynamic processes for a wide range of applications. For example, CFD modeling has recently been used to improve predictions for existing spillway discharge capacity at Folsom Dam, improve our understanding of energy dissipation and hydraulic performance characteristics for the proposed Folsom Auxiliary Spillway, develop innovative fish passage concepts, and improve our description and understanding of transient reservoir hydrodynamics.
- **Dam Safety** – Design support and evaluation of dam safety tools including emergency spillways, risk assessment studies, dam-overtopping protection, rock and alluvium scour, cohesive soil erodibility, cavitation, stagnation-induced uplift, and improved models for simulating embankment dam breach.
- **Training Courses** – Our group hosts specific annual training classes on Modern Methods in Canal Operation and Control (5 days) and Basic Principles and Developments in Flow Measurement (3 days). Our staff also provides teaching assistance for the annual Water Management Workshop, and Safety Evaluation of Existing Dams seminar offered by the Technical Service Center. We also provide customized training on request in the field or at other sites (e.g., water measurement training for irrigation districts or State Engineer's Offices)

Please visit our website for updated project information, training course schedules, and recent accomplishments: <http://www.usbr.gov/pmts/hydraulics_lab/>

The engineers and technicians in the Hydraulic Investigations and Laboratory Services Group work on over 100 projects per year. Some recent projects include model studies to support the spillway design and construction at Folsom Dam, incorporate new valves (which were invented in the hydraulics laboratory) into Arrowrock Dam outlet works; Tracy Fish Facility model studies using live fish; stilling basin abrasion research; and a physical model study to improve sediment bypass at Robles Diversion Dam to support Matilija Dam removal project

Laboratory Shops

<http://www.usbr.gov/pmts/hydraulics_lab/lab_shops/>

Our team of craftsmen constructs and fabricates physical models and specialized testing equipment to support Reclamation's Science and Technology Program and hydraulic laboratory studies conducted in the Technical Service Center. Our Laboratory Shops are equipped and staffed for carpentry, pattern making (plastics), machining, welding, electrical work, painting and coating applications, and other disciplines. The Laboratory Shops are an integral part of the Hydraulic Investigations and Laboratory Services Group.

Technical Service Center Directory

A sample of laboratory shop products includes:

- Custom-designed scaled physical models of hydraulic structures
 - Architectural and demonstration models
 - Construction of scientific testing facilities
 - Integrating instrumentation packages and specialized installation tools
 - Custom CNC routing and machining
-

Technical Service Center Subject Matter Areas and Contacts

This lists contacts for many of TSC's areas of expertise by subject name, group (86-XXXXX), contact, and phone number (area code 303 unless otherwise specified).

A

Ability to meet repayment obligations, agriculture	68212	Rob Davis	445-2730
Ability-to-pay in determining rates	68212	Steve Piper	445-2736
Abrasion testing	68180	Bill Kepler	445-2386
Acceptance testing for concrete aggregates	68180	Bill Kepler	445-2386
Accessibility	68120	Al Bernstein	445-3275
Acid mine drainage	68313	Michael Gobla	445-3032
Acid mine drainage, mitigation	68313	Michael Gobla	445-3032
Acoustic Doppler surveys	68460	Tracy Vermeyen	445-2154
Acoustic Doppler velocimetry	68460	Tracy Vermeyen	445-2154
Acoustic emissions	68460	Warren Frizell	445-2145
Acoustic flowmeters	68460	Tracy Vermeyen	445-2154
Administrative record management	68212	Susan Black	445-2705
Advanced Water Treatment Research (AWTR)	68221	G. Chris Holdren	445-2178
Aerial photography	68251	Doug Clark	445-2271
Aggregate quality evaluation	68180	Bill Kepler	445-2386
Aggregate testing	68180	Bill Kepler	445-2386
Agrometeorology	68250	John England	445-2541
Amphibian/reptile	68290	David Moore	445-2242
Anadromous fish, economic values	68212	David Harpman	445-2733
Analytical chemistry	68290	Kevin Kelly	kkelly@usbr.gov
Ancillary service monitoring	68440	Toby Steves	445-3258
Aquaculture systems	68290	Chuck Hueth	445-2183
Aquatic restoration	68210	Mark Bowen	445-2222
Aquatic systems research	68220	G. Chris Holdren	445-2178
Aquatic vertebrates, physiological stress	68290	Don Portz	445-2220
Aquifer / stream interaction analysis	68320	Bob Talbot	445-2518
Aquifer tests, characteristics	68320	Bob Talbot	445-2518
Arc flash	68440	James Zeiger	445-2850
Archeologic resources & analysis	68010	Jim Bailey	445-2704
Architectural design	68120	Jim Neumaier	445-3280
Architectural models	68460	Bob Einhellig	445-2142
As-built drawings	68322	Dave Martinez	445-2997
Assessing dams, spillways, bridges, conveyance	68180	Bill Kepler	445-2386

Technical Service Center Directory

Assigning project costs, multiple beneficiaries	68212	Charles Borda	445-2728
Atmosphere / watershed ecosystem models	68250	John England	445-2541
AutoCAD (TSC drawings, Committee)	68322	Dave Martinez	445-2997
Automated Data Acquisition Systems	68360	DeWayne Campbell	445-3052
Automation, irrigation	68460	Tony Wahl	445-2155
Automation, powerplant & generation control	68440	James Zeiger	445-2850
Avian surveys & research	68290	Darrell Ahlers	445-2233

B

Bank & bed stabilization	68240	Tim Randle	445-2557
Bathymetric surveys	68460	Tracy Vermeyen	445-2154
Battery testing	68440	Nathan Myers	445-2643
Bed material sampling	68240	Jennifer Bountry	445-3614
Behavioral barriers (fish)	68290	Mark Bowen	445-2222
Bioassessments	68220	G. Chris Holdren	445-2178
Biocontrol	68220	Denise Hosler	445-2195
Bioengineering (fisheries)	68290	Don Portz	445-2220
Biological Assessments & Opinions (writing)	68010	Patty Alexander	445-2574
Bird resources	68290	David Moore	445-2242
Blasting requirements	68312	Joe Kottenstette	445-2966
Borescope inspection	68410	Roger Cline	445-2293
Borrow area development	68311	Jeff Wormer	445-3681
Borrow investigations	68320	Lloyd Crutchfield	445-3074
Brackish water desalination	68221	G. Chris Holdren	445-2178
Bridge building, investigation & analysis	68320	Lloyd Crutchfield	445-3074
Bridge foundations, geologic analysis	68320	Lloyd Crutchfield	445-3074
Bridges, water conveyance	68140	Jesus Romero	445-3124
Brochures, writing & design	68010	Cindy Gray	445-2615
Budget & schedule developing & monitoring	68010	See Specific Client Liaison on page 12	
Building additions, modifications, & rehabilitation	68120	Al Bernstein	445-3275
Building design	68120	Al Bernstein	445-3275
Building earthquake safety	68140	Tim Brown	445-3709
Building foundations, geologic analysis	68320	Lloyd Crutchfield	445-3074
Building, structural analysis	68140	Tim Brown	445-3709
Buildings, risk analysis	68140	Tim Brown	445-3709
Buildings, seismic analysis & safety	68140	Tim Brown	445-3709
Bulkhead gates	68410	Randy Egan	445-2855
Bullchase gate, stoplog design	68410	Dave Hulse	445-2881
Bureau of Indian Affairs client liaison	68312	Will Gonzales	445-3149

C

Cable testing	68440	Eric Eastment	445-2324
Cableways	68410	Alex Ritt	445-2866
CAD, computer-aided design	68322	Dave Martinez	445-2997
CAD, drawings & standardization	68322	Dave Martinez	445-2997
CAD, three dimensional modeling	68322	Dave Martinez	445-2997
Calibration of specialized field testing equipment	68180	Bill Kepler	445-2386

CALSIM (optimization system model)	68210	Nancy Parker	445-2532
Canal lining	68180	Jay Swihart	445-2397
Canal lining workshops	68180	Jay Swihart	445-2397
Canal seepage testing analyses	68210	Del Smith	445-2516
Canal system modeling	68460	Robert Einhellig	445-2142
Canals & pipelines, geotechnical engineering	68311	Chris Slaven	445-3046
Canals, specification drawings , geotechnical	68311	Chris Slaven	445-3046
Canals, water conveyance	68140	Jesus Romero	445-3124
Categorical Exclusion checklist	68212	Susan Black	445-2705
Cathodic protection	68180	Daryl Little	445-2384
Cathodic protection field investigations, research, testing	68180	Daryl Little	445-2384
Cathodic protection, guide paragraphs	68180	Daryl Little	445-2384
Cathodic protection, technical specifications	68180	Daryl Little	445-2384
Cavitation detection	68460	Warren Frizell	445-2145
CD-DVD mastering & duplication for publications	68010	Cindy Gray	445-2615
Cement-pozzolan testing	68180	Bill Kepler	445-2386
Channel maintenance & stability (geomorphic & sediment)	68240	Drew Baird	445-2564
Charge numbers established	68010	See Specific Client Liaison on Page 12	
Chemical processes	68221	G. Chris Holdren	445-2178
Chemical testing	68221	G. Chris Holdren	445-2178
Chemistry for hazardous waste products	68170	Dan Mar	445-2601
Chemistry, quality assurance	68221	Chris Holdren	445-2178
Circuit breaker design	68430	Lisa Gamuciello	445-2835
Circuit breaker ratings	68440	Shawn Patterson	445-2311
Circuit breaker testing	68440	Jim DeHaan	445-2305
Civil Engineering Services Division	68100	Dick LaFond	445-3226
Claims, contract	68170	Nancy Lender	445-3299
Class 3 cultural surveys	68010	Jim Bailey	445-2704
Clean Water Act compliance	68221	G. Chris Holdren	445-2178
Client liaisons & client support	68010	See Specific Client Liaison on Page 12	
Climate analysis & simulation	68210	Subhrendu Gangopadhyay	445-2465
Climate change analyses	68210	Subhrendu Gangopadhyay	445-2465
Climate studies	68250	John England	445-2541
Closed Circuit TV (CCTV) inspection & evaluation	68130	Doug Stanton	445-3265
Coatings & paints technology	68180	Allen Skaja	445-2396
Coatings & paints, laboratory & field testing	68180	Allen Skaja	445-2396
Coatings & paints, technical specifications	68180	Allen Skaja	445-2396
Coatings technology workshops	68180	Allen Skaja	445-2396
Coatings, guide paragraphs	68180	Allen Skaja	445-2396
Coatings, guide specifications	68180	Bill Kepler	445-2386
Cofferdams	68311	Ron Oaks	445-2975
Commercial services planning	68212	Charles Borda	445-2728
Commissioner's Office client liaison	68010	Christi Young	445-2561

Technical Service Center Directory

Community & residential redevelopment	68120	Al Bernstein	445-3275
Components, rapid replacement of malfunctioning	68360	DeWayne Campbell	445-3052
Comprehensive Facility Reviews, mechanical equipment	68410	John Shisler	445-2869
Compressed air systems	68410	Randy Egan	445-2855
Computer system administration	68440	James Zeiger	445-2850
Computer system debugging, problem solving	68440	James Zeiger	445-2850
Computer-aided design (CAD)	68322	Dave Martinez	445-2997
Concrete & concrete repair workshops	68180	Bill Kepler	445-2386
Concrete & rock abrasion testing	68180	Bill Kepler	445-2386
Concrete & rock creep design & testing	68180	Bill Kepler	445-2386
Concrete & rock durability testing	68180	Bill Kepler	445-2386
Concrete aggregate source surveys	68180	Bill Kepler	445-2386
Concrete construction & protective coatings	68180	Katie Bartojay	445-2374
Concrete construction & repair	68180	Katie Bartojay	445-2374
Concrete construction laboratory testing & inspection	68180	Katie Bartojay	445-2374
Concrete construction quality control practices training	68180	Katie Bartojay	445-2374
Concrete construction, field inspection	68180	Bill Kepler	445-2386
Concrete construction, technical specifications	68180	Katie Bartojay	445-2374
Concrete core cutting, preparation, & testing	68180	Bill Kepler	445-2386
Concrete core evaluation studies, mass/structural	68180	Bill Kepler	445-2386
Concrete coring investigations	68180	Bill Kepler	445-2386
Concrete dam foundations	68312	Jeanne Major	445-2972
Concrete dams	68130	John Trojanowski	445-3263
Concrete dams, seismic analysis	68110	Barbara Mills-Bria	445-3229
Concrete inspection	68180	Bill Kepler	445-2386
Concrete materials, guide paragraphs	68180	Katie Bartojay	445-2374
Concrete pipe design	68140	Jesus Romero	445-3124
Concrete pipe investigations	68140	Jesus Romero	445-3124
Concrete repair	68180	Kurt VonFay	445-2399
Concrete repair materials, development & testing	68180	Kurt VonFay	445-2399
Concrete structure inspection	68130	Doug Stanton	445-3265
Concrete technology	68180	Bill Kepler	445-2386
Concrete thermal properties tests (hydration, diffusivity)	68180	Bill Kepler	445-2386
Concrete, forensic evaluation of failures	68180	Bill Kepler	445-2386
Concrete, laboratory testing	68180	Bill Kepler	445-2386
Concrete, precast	68120	Al Bernstein	445-3275
Concrete, roller compacted	68180	Bill Kepler	445-2386
Cone penetration tests (CPT)	68320	Jeff Farrar	445-2333
Conjunctive relationships, surface & groundwater	68210	Del Smith	445-2516
Conjunctive use opportunities evaluation	68210	Del Smith	445-2516
Conservation, water supply & use	68210	Mark Spears	445-2514

Consolidated sampling	68320	Lloyd Crutchfield	445-3074
Constructed wetlands	68220	G. Chris Holdren	445-2178
Construction control/materials testing	68180	Bill Kepler	445-2386
Construction cost estimates	68170	Dan Maag	445-3084
Construction cost trends, index	68170	Dan Maag	445-3084
Construction geologic mapping	68320	Lloyd Crutchfield	445-3074
Construction management	68170	Bob Baumgarten	445-3076
Construction materials, technical standards	68180	Bill Kepler	445-2386
Construction submittals, review & approval	68180	Katie Bartojay	445-2374
Construction support & inspections	68170	Jamie Macartney	445-3296
Construction support, subsurface drains & wells	68210	Roger Burnett	445-2508
Consumptive use	68210	Mark Spears	445-2514
Consumptive use demands	68210	Mark Spears	445-2514
Consumptive water use by crops & riparian vegetation	68210	Mark Spears	445-2514
Contaminants, fate & transport	68220	Merlynn Bender	445-2460
Contract claims consultation services	68170	Nancy Lender	445-3299
Contract management	68170	Jamie Macartney	445-3296
Contract schedules	68170	Nancy Lender	445-3299
Control system analysis & testing	68440	J. C. Agee	445-2309
Control system design	68430	Larry Rossi	445-2820
Conveyance systems automation	68140	Jesus Romero	445-3124
Conveyors	68410	Rick Christensen	445-2858
Core recovery	68320	Lloyd Crutchfield	445-3074
Coring	68180	Bill Kepler	445-2386
Corrosion & cathodic protection workshops	68180	Daryl Little	445-2384
Corrosion control systems, O&M procedures	68180	Daryl Little	445-2384
Corrosion monitoring & cathodic protection systems	68180	Daryl Little	445-2384
Corrosion protection	68180	Daryl Little	445-2384
Corrosion protection field investigations, research, testing	68180	Daryl Little	445-2384
Corrugated plastic drain pipe (approval)	68210	Roger Burnett	445-2508
Corrugated plastic drain pipe (testing)	68140	Jesus Romero	445-3124
Cost allocation	68212	Charles Borda	445-2728
Cost effectiveness	68212	Steve Piper	445-2736
Cost estimates, level-of-effort	68170	Dan Maag	445-3084
Cost estimates-conceptual	68170	Dan Maag	445-3084
Cost estimates-prevalidation, feasibility, appraisal	68170	Dan Maag	445-3084
Cost proposal reviews	68170	Dan Donaldson	445-3080
Costs vs. benefits of fishery improvement, restoration	68212	Jon Platt	445-2737
Cost-sharing proposals	68212	Steve Piper	445-2736
Cranes & hoists	68410	Alex Ritt	445-2866
Critical path method (CPM) schedules	68170	Nancy Lender	445-3299
Cross-drainage studies	68250	John England	445-2541
Cultural resources	68010	Jim Bailey	445-2704

Technical Service Center Directory

Cultural surveys	68010	Jim Bailey	445-2704
Cutoff wall design	68311	Jack Gagliardi	445-2969
Cutoff walls, geotechnical engineering	68311	Jack Gagliardi	445-2969
Cutoff walls, specification drawings, geotechnical	68311	Jack Gagliardi	445-2969
Cyber Security Assessment and Management (CSAM) input	68010	Jim Sewell	445-3063

D

Dam breach modeling	68460	Tony Wahl	445-2155
Dam decommissioning planning	68240	Tim Randle	445-2557
Dam failure inundation studies & maps	68250	Bruce Feinberg	445-3241
Dam foundations, grouting	68311	Chris Slaven	445-3046
Dam inspection, diving	68130	Walt Heyder	445-3246
Dam instrumentation database	68360	DeWayne Campbell	445-3052
Dam overtopping protection	68460	Tracy Vermeyen	445-2154
Dam removal design (concrete dams)	68130	Tom Hepler	445-3261
Dam removal design (embankment dams)	68313	Tom Hepler	445-3261
Dam removal or modification (sediment transport)	68240	Tim Randle	445-2557
Dam safety & Operations & Maintenance inspections	68360	DeWayne Campbell	445-3052
Dam safety analysis of instrumentation data	68360	DeWayne Campbell	445-3052
Dam Safety client liaison	68312	Will Gonzales	445-3149
Dam safety evaluations & examinations	68360	Chris Danley	445-2755
Dam safety inspections	68360	DeWayne Campbell	445-3052
Dam safety research laboratory investigations	68130	Stephen Dominic	445-2379
Dam safety research, hydraulic models	68460	Tony Wahl	445-2155
Dam safety technical priority rating system	68360	Chris Danley	445-2755
Dam safety training	68360	DeWayne Campbell	445-3052
Dam safety, hydrological aspects	68250	John England	445-2541
Dam seepage geochemistry	68220	G. Chris Holdren	445-2178
Dam tender training	68360	Charlie Swanson	445-2757
Dams & water conveyance investigation and analysis	68320	Lloyd Crutchfield	445-3074
Dams, hydraulic structure designs & modifications	68130	John Trojanowski	445-3263
Dams, overtopping	68312	Ron Oaks	445-2975
Dams, risk assessment	68300	Bill Engemoen	445-2960
Data acquisition systems for condition monitoring	68440	Jim DeHaan	445-2305
Debris control	68410	Rick Christensen	445-2858
Dechlorination	68290	Chuck Hueth	445-2183
Decision Process Guide	68212	Susan Black	445-2705
Decision support systems	68210	Subhrendu Gangopadhyay	445-2465
Decontamination of cyanide heap-leach facilities	68313	Michael Gobla	445-3032
Demonstration testing	68221	G. Chris Holdren	445-2178
Desalination pilot plants	68221	G. Chris Holdren	445-2178

Desalination Research & Development	68221	G. Chris Holdren	445-2178
Desert fish	68290	Eric Best	445-2179
Design natural channels & habitat	68140	Linda Bowles	445-3114
Designs & specifications for new projects	68311	Chris Slaven	445-3046
Designs & specifications for remediation	68313	Mark Bliss	445-2988
Designs, data, specifications, & construction support	68180	Bill Kepler	445-2386
Desktop publishing & printing	68010	Patty Alexander	445-2574
Dewatering construction	68312	Bob Talbot	445-2518
Dewatering designs; seepage/groundwater modeling	68311	Bob Talbot	445-2518
Dewatering system requirements, structures	68320	Bob Talbot	445-2518
Dewatering system study, design & analysis	68312	Bob Talbot	445-2518
Dewatering systems, geologic analysis	68320	Bob Talbot	445-2518
Didson camera deployment	68290	Eric Best	445-2179
Differential water controls	68410	Rick Christensen	445-2858
Directives & standards	68010	Teri Manross	445-2587
Disaster response services	68313	Bob Dewey	445-2976
Discontinuities, descriptions	68320	Lloyd Crutchfield	445-3074
Dispersive soil	68320	Jeff Farrar	445-2333
Dissolved gas analysis (DGA)	68440	Jill Smith	445-2307
Diversion structures	68140	Jesus Romero	445-3124
Diversion structures (hydrologic modeling)	68240	Tim Randle	445-2557
Diving inspections	68130	Walt Heyder	445-3246
Diving team	68130	Walt Heyder	445-3246
Doble Program	68440	Jill Smith	445-2307
Document conversion for publication	68010	Cindy Gray	445-2615
Document preparation & publication	68010	Patty Alexander	445-2574
Document scanning, high resolution	68251	Doug Clark	445-2271
Dozer trench mapping	68320	Lloyd Crutchfield	445-3074
Draft tube gates	68410	Dave Hulse	445-2881
Drainage, ground water	68210	Roger Burnett	445-2508
Drawing conversions	68322	Dave Martinez	445-2997
Drawings, technical engineering, specifications, as-built	68322	Dave Martinez	445-2997
Dredges	68410	Rick Christensen	445-2858
Drilling specifications & format	68320	Lloyd Crutchfield	445-3074
Drought analysis	68210	Subhrendu Gangopadhyay	445-2465
Drought indices	68250	John England	445-2541
Drying shrinkage testing	68180	Bill Kepler	445-2386
E			
Early warning monitoring parameters	68250	David Fisher	445-2542
Early warning systems (emergency management)	68360	David Fisher	445-3542
Earned value management	68170	Nancy Lender	445-3299
Earth & concrete dams, geotechnical	68300	Bill Engemoen	445-2960
Earth & technical training	68180	Zeynep Erdogan	445-2348
Earth materials testing	68180	Zeynep Erdogan	445-2348

Technical Service Center Directory

Earth School	68180	Zeynep Erdogan	445-2348
Earth Sciences, research laboratory	68180	Bill Kepler	445-2386
Earthen & concrete dams, geotechnical engineering	68300	Bill Engemoen	445-2960
Earthquake hazards, geological expertise	68330	Dan Levis	445-3175
Earthquake loading	68330	Dan Levis	445-3175
Earthwork construction control/materials testing	68320	Jeff Farrar	445-2333
EAs & EISs, writing	68010	Patty Alexander	445-2574
Ecological research	68220	G. Chris Holdren	445-2178
Economic analyses affecting Native Americans	68212	Steve Piper	445-2736
Economic analysis, water use: municipal, industrial,	68212	Steve Piper	445-2736
Economic benefits, economic investigations	68212	Jon Platt	445-2737
Economic feasibility evaluations	68212	Steve Piper	445-2736
Economic models	68212	David Harpman	445-2733
Economic models for quantifying impacts, repayment,	68212	Steve Piper	445-2736
Economics & Resource Planning Team	68210	Del Smith	445-2516
Ecosystem diagnostics	68220	Mike Horn	445-2203
Ecosystem models	68250	John England	445-2541
Editing	68010	Patty Alexander	445-2574
Educational facilities & interpretive centers	68120	Al Bernstein	445-3275
Effects of water pricing structures on water demand	68212	Steve Piper	445-2736
EISs & EAs (geomorphic studies & river restoration plans)	68240	Tim Randle	445-2557
EISs and EAs (wildlife impacts)	68290	Yvonne Bernal	445-2205
Electric power research	68440	Jim DeHaan	445-2305
Electric power, field testing	68440	Jim DeHaan	445-2305
Electrical Design Group	68430	George Girgis	445-2310
Electrical equipment component & design selection	68440	Shawn Patterson	445-2311
Electrical equipment condition monitoring	68440	Jim DeHaan	445-2305
Electrical equipment factory inspection	68430	Larry Rossi	445-2820
Electrical equipment inspection	68440	Shawn Patterson	445-2311
Electrical equipment inspection, electrical design	68430	George Girgis	445-2310
Electrical maintenance advice & assistance	68440	James Zeiger	445-2850
Electrical safety	68440	Jim DeHaan	445-2305
Electrofishing	68290	Juddson Sechrist	445-2198
Electromagnetic fields measurement	68440	Jim DeHaan	445-2305
Electronic & digital speed governor troubleshooting	68440	J. C. Agee	445-2309
Electronics, designs & diagnoses	68440	Jim DeHaan	445-2305
Elevators	68410	Alex Ritt	445-2866
Embankment dam, engineering analysis design & review	68313	Bob Dewey	445-2976
Embankment dams	68300	Bill Engemoen	445-2960

Embankment Dams & Geotechnical Engineering Group 1	68311	Dennis Hanneman	445-2958
Embankment Dams & Geotechnical Engineering Group 2	68312	Jeanne Major	445-2972
Embankment Dams & Geotechnical Engineering Group 3	68313	Mike Gobla	445-3032
Embankment dams, dynamic analysis	68313	Dave Gillette	445-2994
Embankment dams, piping & seepage	68311	Dennis Hanneman	445-2958
Embankment dams, seismic analysis	68313	Dave Gillette	445-2994
Embankment security	68313	Gary Fisk	445-2971
Embankment zoning	68300	Bill Engemoen	445-2960
Embankments, stability analysis	68313	Dave Gillette	445-2994
Emergency Action Plans	68250	David Fisher	445-2542
Emergency management	68250	David Fisher	445-2542
Endangered Species Act compliance	68220	G. Chris Holdren	445-2178
Endangered species, economic values	68212	David Harpman	445-2733
Engine generators	68410	Rick Christensen	445-2858
Engineering documents	68010	Teri Manross	445-2587
Engineering estimate	68170	Dan Maag	445-3084
Engineering Geology Field Manual	68320	Lloyd Crutchfield	445-3074
Engineering Geology Group	68320	Lloyd Crutchfield	445-3074
Engineering geophysics	68330	Rich Markiewicz	445-3167
Entrainment evaluation	68290	Eric Best	445-2179
Environmental Applications & Research Group	68220	G. Chris Holdren	445-2178
Environmental assessment	68212	Susan Black	445-2705
Environmental Assessments (EAs) writing	68010	Patty Alexander	445-2574
Environmental chemistry research	68220	Kevin Kelly	kkelly@usbr.gov
Environmental chemistry, coatings applications	68180	Allen Skaja	445-2396
Environmental chemistry, documents & oversight)	68220	G. Chris Holdren	445-2178
Environmental contaminants	68220	G. Chris Holdren	445-2178
Environmental documents, writing & producing	68010	Patty Alexander	445-2574
Environmental engineering	68221	G. Chris Holdren	445-2178
Environmental hydraulics	68460	Robert F. Einhellig	445-2142
Environmental impact remediation	68170	Jamie Macartney	445-3296
Environmental Impact Statements (EISs), writing	68010	Patty Alexander	445-2574
Environmental Justice (EJ)	68212	Susan Black	445-2705
Environmental modeling	68290	Mark Bowen	445-2222
Environmental research	68220	G. Chris Holdren	445-2178
Environmental restoration	68170	Jamie Macartney	445-3296
Environmental restoration, geologic analysis	68313	Michael Gobla	445-3032
Environmental studies	68220	G. Chris Holdren	445-2178
Environmental testing (-10 to 180 °F)	68180	Bill Kepler	445-2386
Environmentally oriented geotechnical projects	68313	Michael Gobla	445-3032

Technical Service Center Directory

Equipment, calibrating specialized field testing equipment	68180	Bill Kepler	445-2386
Equipment, hydraulic	68420	Dan Drake	445-2874
Equipment, life analysis of existing & new equipment	68420	Dan Drake	445-2874
Estimating, Specifications, & Construction Management	68170	Bob Baumgarten	445-3076
Evapotranspiration (ET) analysis & prediction	68210	Mark Spears	445-2514
EWS, early warning systems	68250	David Fisher	445-2542
Excavation geologic mapping (large scale)	68320	Lloyd Crutchfield	445-3074
Excavation stability	68320	Lloyd Crutchfield	445-3074
Excavation stability & landslides investigation and analysis	68320	Lloyd Crutchfield	445-3074
Excitation system design	68440	J. C. Agee	445-2309
Exhibits	68010	Cindy Gray	445-2615
Expert witnesses for construction claims	68180	Bill Kepler	445-2386
Extreme precipitation	68250	David Fisher	445-2542

F

Facilitator (for public involvement & meetings)	68170	Bob Baumgarten	445-3076
Facilities, Instructions, standards, & Techniques (FIST)	68440	James Zeiger	445-2850
Factory inspection	68170	Nancy Lender	445-3299
Fatigue failure evaluations	68460	Warren Frizell	445-2145
Fault activity assessments	68330	Dan Levis	445-3175
Fault mapping	68330	Dan Levis	445-3175
Feasibility studies	68212	Charles Borda	445-2728
Feedback control system modeling & analysis	68440	J. C. Agee	445-2309
FERC relicensing cases, economic investigations	68212	David Harpman	445-2733
Field exploration (geologic)	68320	Chris Holdren	445-2178
Field exploration/monitoring programs	68300	Lloyd Crutchfield	445-3074
Field instrumentation	68180	Bill Kepler	445-2386
Field mapping	68320	Lloyd Crutchfield	445-3074
Field sampling protocol, geologic	68320	Mark A. Vandenberg	445-3306
Field studies equipment	68320	Jeff Farrar	445-2333
Field Technical Investigations & Services	68180	Bill Kepler	445-2386
Filter & drain analyses	68300	Dan Osmun	445-2980
Financial analyses of projects	68212	Charles Borda	445-2728
Finding of no significant impact	68212	Susan Black	445-2705
Finite element analysis	68110	Barbara Mills-Bria	445-3229
Fire detection & alarm systems	68430	Larry Rossi	445-2820
Fire suppression systems	68410	Randy Egan	445-2855
Fish & moss screens	68410	Rick Christensen	445-2858
Fish aquaculture	68290	Don Portz	445-2220
Fish by-pass evaluation	68290	Juddson Sechrist	445-2198
Fish entrainment	68290	Eric Best	445-2179
Fish evaluations & impacts on operations, compliance	68220	G. Chris Holdren	445-2178

Fish evaluations & impacts on operations, research	68290	Zak Sutphin	445-2141
Fish facilities	68140	Jesus Romero	445-3124
Fish habitat, economic values	68212	Jon Platt	445-2737
Fish handling equipment	68410	Rick Christensen	445-2858
Fish ladders	68410	Rick Christensen	445-2858
Fish protection evaluation	68290	Juddson Sechrist	445-2198
Fish, swimming performance	68290	Zak Sutphin	445-2141
Fisheries & Wildlife Resources Group	68290	Sharon Taylor	445-2052
Fisheries research	68290	Don Portz	445-2220
Fish-friendly pumps	68290	Raymond Bark	445-2204
Flash boundary calculations	68440	James Zeiger	445-2850
Flood analysis & flood frequency analyses	68250	John England	445-2541
Flood hydrology	68250	John England	445-2541
Flood Hydrology & Emergency Management Group	68250	David Fisher	445-2542
Flood inundation mapping & software	68250	Bruce Feinberg	445-3241
Flood warning & evacuation time	68250	Bruce Feinberg	445-3241
Flood, probable maximum (PMF)	68250	John England	445-2541
Floodplain restoration & management	68220	Scott O'Meara	445-2216
Flow meters application & operation	68460	Warren Frizell	445-2145
Flow meters, design & specifications	68410	Rick Christensen	445-2858
Fluvial geomorphology	68330	Jeanne Godaire	445-3164
Footings, geotechnical engineering	68311	Ryan Woodruff	445-2334
Forecast precipitation & runoff	68250	John England	445-2541
Forensic evaluation of failures	68180	Bill Kepler	445-2386
Foundation design	68300	Bill Engemoen	445-2960
Foundation improvement methods	68313	Mark Bliss	445-2988
Foundation material research	68311	Jack Gagliardi	445-2969
Foundation material testing & research	68180	Bill Kepler	445-2386
Foundation treatment	68320	Lloyd Crutchfield	445-3074
Freeboard, geotechnical engineering	68313	Bob Dewey	445-2976
Freeze/thaw durability testing	68180	Bill Kepler	445-2386
Fuel cells	68440	Nathan Myers	445-2643
Fuse plugs	68313	Bob Dewey	445-2976

G

Gate & valve design	68420	Dan Drake	445-2874
Gate & valve testing program	68410	Bill McStraw	445-2294
Gates, bullchase, stoplog design	68410	Dave Hulse	445-2881
Gates, clamshell	68410	Dave Hulse	445-2881
Generator analysis	68430	Larry Rossi	445-2820
Generator testing & troubleshooting	68440	Jim DeHaan	445-2305
Generator, large motor, transformer diagnosis & testing	68440	Jim DeHaan	445-2305
Generators, commissioning tests	68440	Jim DeHaan	445-2305
Geochemistry of dam seepage	68290	Kevin Kelly	kkelly@usbr.gov
Geographic Information Systems (GIS)	68251	Doug Clark	445-2271
Geographic information, remote sensing	68251	Doug Clark	445-2271

Technical Service Center Directory

Geologic mapping, full & peripheral	68320	Lloyd Crutchfield	445-3074
Geologic mapping, large excavation	68320	Lloyd Crutchfield	445-3074
Geologic sample analysis	68320	Mark A. Vandenberg	445-3306
Geologic sample management	68320	Lloyd Crutchfield	445-3074
Geologic site characterization activities	68320	Lloyd Crutchfield	445-3074
Geologic site mapping	68320	Lloyd Crutchfield	445-3074
Geologic suitability, long-term radioactive waste storage	68320	Lloyd Crutchfield	445-3074
Geologic, field exploration	68320	Lloyd Crutchfield	445-3074
Geologic, soil, test pit, & auger hole logs	68320	Lloyd Crutchfield	445-3074
Geologic/geotechnical interpretations, planning & specifications	68320	Lloyd Crutchfield	445-3074
Geological & geotechnical conditions	68320	Lloyd Crutchfield	445-3074
Geological expertise for earthquake hazards	68330	Dan Levis	445-3175
Geology	68320	Lloyd Crutchfield	445-3074
Geology, Engineering	68320	Lloyd Crutchfield	445-3074
Geomembranes	68180	Jay Swihart	445-2397
Geomorphology	68330	Jeanne Godaire	445-3164
Geophysical exploration	68330	Rich Markiewicz	445-3167
Geophysical interpretation	68330	Rich Markiewicz	445-3167
Geophysical studies	68330	Rich Markiewicz	445-3167
Geophysics & Seismotectonics Group	68330	Dan Levis	445-3175
Geosynthetic elements	68180	Jay Swihart	445-2397
Geosynthetics design	68311	Cheryl Learned	445-2773
Geosynthetics materials	68180	Jay Swihart	445-2397
Geosynthetics research investigations & lab testing	68180	Jay Swihart	445-2397
Geosynthetics workshops	68180	Jay Swihart	445-2397
Geosynthetics, forensic evaluation of failures	68180	Bill Kepler	445-2386
Geosynthetics, guide specifications	68180	Bill Kepler	445-2386
Geosynthetics, service life assessment	68180	Jay Swihart	445-2397
Geotechnical engineering	68313	Bob Dewey	445-2976
Geotechnical engineering analyses	68313	Dave Gillette	445-2994
Geotechnical engineering, studies, & designs	68311	Chris Slaven	445-3046
Geotechnical field testing	68180	Zeynep Erdogan	445-2348
Geotechnical Integrator (gINT),geologic log software	68320	Rebecca Heisler	445-3172
Geotechnical project management	68313	Bob Dewey	445-2976
Geotechnical publications	68300	Dan Osmun	445-2980
Geotechnical Services Division	68300	Karen Knight	445-3044
Geotechnical specifications drawings & paragraphs	68311	Jeff Wormer	445-3691
Geotechnical Support Team	68322	Lloyd Crutchfield	445-3074
Geotextiles testing	68180	Bill Kepler	445-2386
GIS referenced 1-D & 2-D hydraulic modeling	68250	Bruce Feinberg	445-3241
Global climate change	68250	John England	445-2541
Global Positioning Systems (GPS)	68251	Doug Clark	445-2271
GOAL studies	68170	Bob Baumgarten	445-3076
Governor alignment program, digital/electronic	68440	J. C. Agee	445-2309

Governor alignment program, mechanical	68410	Roger Cline	445-2293
Governor system design	68430	George Girgis	445-2310
Graphic presentations	68010	Cindy Gray	445-2615
Graphic spatial database	68251	Doug Clark	445-2271
Gravity,micro-gravity measurements	68330	Rich Markiewicz	445-3167
Great Plains (GP) Region client liaison	68460	Tom Gill	445-2201
Green building design	68120	Al Bernstein	445-3275
Ground improvement	68313	Mark Bliss	445-2988
Ground motions	68330	Chris Wood	445-3178
Grounding, plant & personal protective	68440	Jim DeHaan	445-2305
Ground-penetrating radar	68330	Rich Markiewicz	445-3167
Groundwater & surface conjunctive relationships	68210	Del Smith	445-2516
Groundwater banking	68320	Bob Talbot	445-2518
Groundwater data acquisition-piezometers	68320	Lloyd Crutchfield	445-3074
Groundwater flow models	68320	Bob Talbot	445-2518
Groundwater management	68210	Del Smith	445-2516
Groundwater recharge	68320	Bob Talbot	445-2518
Grouting	68180	Kurt VonFay	445-2399
Grouting design & foundation, geologic analysis	68320	Lloyd Crutchfield	445-3074
H			
Habitat assessments	68220	Mark S. Nelson	445-2225
Habitat Impacts	68140	Linda Bowles	445-3114
Hazard classification	68360	Dave Fisher	445-2542
Hazard classification, sedimentation	68240	Mike Sixta	445-2568
Hazardous & toxic substances in soil & water	68220	G. Chris Holdren	445-2178
Hazardous & toxic waste sites, remediation & removal	68313	Michael Gobla	445-3032
Hazardous Energy Control Program	68440	Jim DeHaan	445-2305
Hazardous materials	68221	Mike Simonavice	445-2196
Hazardous waste	68221	Mike Simonavice	445-2196
Hazardous waste collection & disposal	68221	Mike Simonavice	445-2196
Hazardous waste emergency response	68313	Michael Gobla	445-3032
Hazardous waste remediation & removal actions	68313	Michael Gobla	445-3032
Hazardous waste remediation techniques	68313	Michael Gobla	445-3032
Hazardous waste site characterization	68320	Mark A. Vandenberg	445-3306
Hazardous waste site field investigations	68320	Mark A. Vandenberg	445-3306
Hazardous waste site investigations (sampling)	68320	Mark A. Vandenberg	445-3306
Hazardous waste site remediation	68221	G. Chris Holdren	445-2178
Hazardous waste site safety	68320	Lloyd Crutchfield	445-3074
Headcut erosion modeling	68460	Tony Wahl	445-2155
Heap leach pads, geotechnical engineering	68313	Michael Gobla	445-3032
Heating, ventilating, & air conditioning equipment	68410	Paul Schlein	445-2868
HEC-HMS model applications	68210	Nancy Parker	445-2532

Technical Service Center Directory

Herbicide application techniques	68220	Scott O'Meara	445-2216
Herpetological studies	68290	David Moore	445-2242
High voltage facilities	68440	Shawn Patterson	445-2311
High-voltage facilities electrical design	68430	George Girgis	445-2310
High-voltage generator diagnostics	68440	Jim DeHaan	445-2305
Historic preservation considerations & evaluations	68120	Al Bernstein	445-3275
Historic resources	68010	Jim Bailey	445-2704
Historical site preservation, structures	68180	Kurt VonFay	445-2399
Hoists	68410	Alex Ritt	445-2866
Hydraulic analyses for dams	68130	John Trojanowski	445-3263
Hydraulic design/analysis high-velocity & pressure flow	68130	John Trojanowski	445-3263
Hydraulic Equipment Group	68420	Dan Drake	445-2874
Hydraulic Investigations & Laboratory Services Group	68460	Robert F. Einhellig	445-2142
Hydraulic laboratory	68460	Tony Wahl	445-2155
Hydraulic modeling	68460	Tony Wahl	445-2155
Hydraulic modeling (1D, 2D, 3D)	68240	Blair Greimann	445-2563
Hydraulic structures & equipment	68460	Warren Frizell	445-2145
Hydraulic structures, structural design	68140	Jesus Romero	445-3124
Hydraulic system evaluation	68460	Warren Frizell	445-2145
Hydraulic transient analysis	68140	Linda Bowles	445-3114
Hydraulics, field testing	68460	Warren Frizell	445-2145
Hydroacoustic fishery studies	68290	Juddson Sechrist	445-2198
Hydroelectric research	68440	Jim DeHaan	445-2305
Hydroelectric units, alignment	68410	Roger Cline	445-2293
Hydrographic surveying using satellite positioning,	68240	Ronald Ferrari	445-2551
Hydrologic engineering	68210	John Osterberg	445-2462
Hydrologic engineering studies	68210	John Osterberg	445-2462
Hydrology	68250	John England	445-2541
Hydrology, flood	68250	John England	445-2541
Hydrology, statistical analyses	68250	John England	445-2541
Hydrometeorological studies	68250	John England	445-2541
Hydrometeorological threat forecasting	68250	David Fisher	445-2542
Hydrometeorology	68250	John England	445-2541
Hydropower generation, cost evaluation	68212	David Harpman	445-2733
Hydropower modeling, economic investigations	68212	David Harpman	445-2733
Hydropower Technical Services Group	68440	James Zeiger	445-2850
HYDROSS-HSS modeling system	68210	Nancy Parker	445-2532
Hyporheic redd investigations	68290	Mark Bowen	445-2222

I

IDIQ (Indefinite Delivery, Indefinite Quality) client liaison	68170	Jamie Macartney	445-3296
IGSM	68210	Nancy Parker	445-2532
Illustrations	68010	Cindy Gray	445-2615
Inaccessible features	68130	Walt Heyder	445-3246
Incident & serious accident investigations	68440	James Zeiger	445-2850

Independent Government Cost Estimates (IGCE)	68170	Bob Baumgarten	445-3076
Independent system operators	68440	James Zeiger	445-2850
Indian Trust Assets (ITA) evaluation	68212	Becky Redhorse	445-2710
Inflow design hydrographs	68250	John England	445-2541
Infrared Inspection Program	68440	Nathan Myers	445-2643
Infrastructure reliability (hydrologic modeling)	68240	Drew Baird	445-2564
Infrastructure Services Division	68400	Mark Boyle	445-2828
Inspections & damage survey reports	68311	Ashok Chugh	445-3026
Instream flow studies	68220	Pat Mangan	445-2236
Instrumentation & data acquisition, structural monitoring	68180	Fred Travers	445-2398
Instrumentation & Inspections Group	68360	DeWayne Campbell	445-3052
Instrumentation probes	68440	Jim DeHaan	445-2305
Instrumentation, calibration	68360	DeWayne Campbell	445-3052
Instrumentation, electronic & electric power	68440	Jim DeHaan	445-2305
Instrumentation, material testing	68180	Bill Kepler	445-2386
Instrumentation, wireless	68440	Jim DeHaan	445-2305
Insulation, high-voltage testing & diagnostics	68440	James Zeiger	445-2850
Interior building design	68120	Al Bernstein	445-3275
International Affairs client liaison	68250	Dave Fisher	445-2542
Interrelationships (environment & aquatic systems)	68220	G. Chris Holdren	445-2178
Invasive species	68220	Denise Hosler	445-2195
Irrigated agriculture, ability to meet repayment obligations	68212	Rob Davis	445-2730
Irrigated agriculture, profit & sustainability	68212	Rob Davis	445-2730
Irrigation modeling	68210	Mark Spears	445-2514
Irrigation return flow treatment	68120	Scott Irvine	445-2253
Irrigation structures	68140	Jesus Romero	445-3124
Irrigation water requirements	68210	Mark Spears	445-2514
J			
Job Hazard Analysis	68221	Mike Simonavice	445-2196
Just Line It (design, install, & repair geomembrane liners)	68180	Jay Swihart	445-2397
K			
K88 & K8T Working Capital Funds	68010	Tom Luebke	445-2600
KPSIM	68210	Nancy Parker	445-2532
L			
Laboratory audits	68290	Denise Hosler	445-2195
Laboratory models	68460	Tony Wahl	445-2155
Laboratory shops	68460	Bob Einhellig	445-2142
Laboratory tours	68460	Tony Wahl	445-2155
Land classification for irrigation	68210	Roger Burnett	445-2508
Land resources	68210	Roger Burnett	445-2508

Technical Service Center Directory

Landscape architectural design	68120	John Pattie	445-3273
Landslide Register	68320	Mark A. Vandeberg	445-3306
Landslides, geology	68320	Lloyd Crutchfield	445-3074
Landslides, geotechnical	68313	Jonathan Harris	445-2959
Large-scale dynamic testing, 1-million-lb capacity	68180	Bill Kepler	445-2386
Large-scale structural testing, 5-million-lb capacity	68180	Bill Kepler	445-2386
LAST program	68250	John England	445-2541
Layout & design (publications)	68010	Patty Alexander	445-2574
Levee overtopping (modeling)	68240	Blair Greimann	445-2563
LiDAR acquisition & processing	68251	Doug Clark	445-2271
Life cycle cost estimates	68170	Dan Maag	445-3084
Life extension	68440	Jim DeHaan	445-2305
Lift safety evaluations	68120	Al Bernstein	445-3275
Lighting systems	68430	Larry Rossi	445-2820
Limnological studies	68220	G. Chris Holdren	445-2178
Line surveys, detailed	68322	Lloyd Crutchfield	445-3074
Lining	68180	Bill Kepler	445-2386
Liquefaction analyses	68313	Dave Gillette	445-2994
Literature searches & research	68010	Deena Larsen	445-2584
Logic controller applications & training	68440	James Zeiger	445-2850
Loss of life estimates (flood)	68250	David Fisher	445-2542
Low flow & high resolution terrain data capabilities	68240	Kurt Wille	445-2285
Lower Colorado (LC) Region client liaison	68460	Connie Svoboda	445-2152
Lubricating oil systems	68410	Randy Egan	445-2855

M

Machine condition monitoring	68440	Jim DeHaan	445-2305
Machining & milling services	68460	Dane Cheek	445-2162
Magnetic fields exposure	68440	Jim DeHaan	445-2305
Mammal (small) trapping	68290	David Moore	445-2242
Manual writing, editing, publication	68010	Deena Larsen	445-2584
Mapping, geologic analysis	68320	Lloyd Crutchfield	445-3074
Maps/drawings, plotting	68251	Doug Clark	445-2271
Masonry	68120	Al Bernstein	445-3275
Mass concrete mixture design & proportioning investigations	68180	Katie Bartojay	445-2374
Materials Engineering & Research Laboratory Group	68180	Bill Kepler	445-2386
Materials instrumentation	68180	Bill Kepler	445-2386
Materials properties	68180	Bill Kepler	445-2386
Materials property databases	68180	Kurt VonFay	445-2399
Materials research	68180	Bill Kepler	445-2386
Materials testing	68180	Bill Kepler	445-2386
Matrix team management	68212	Charles Borda	445-2728
Mechanical equipment factory inspection	68410	John Shisler	445-2869
Mechanical Equipment Group	68410	Dave Hulse	445-2881

Mechanical governor troubleshooting & adjustment	68410	Roger Cline	445-2293
Mechanical overhaul planning	68410	Roger Cline	445-2293
Membrane storage & cleaning	68221	G. Chris Holdren	445-2178
Mercury in the environment applications & research	68290	Merlynn Bender	445-2460
Metals, forensic evaluation of failures	68180	Bill Kepler	445-2386
Metalwork	68120	Olaff Huerta	445-3270
Meteorology & meteorological support	68250	Victoria Sankovich	445-2474
Microstations	68330	Matt Jones	445-3198
Mid-Pacific (MP) Region client liaison	68170	Dan Maag	445-3084
Mine closure & reclamation	68313	Michael Gobla	445-3032
Mine sites, revegetation of high-altitude, hardrock	68313	Michael Gobla	445-3032
Mineral processing facilities	68313	Michael Gobla	445-3032
Mineralogy	68180	Bill Kepler	445-2386
Mobile fish swimming performance	68290	Zak Sutphin	445-2141
Mobile water treatment pilot plant	68221	G. Chris Holdren	445-2178
Modeling & models	68460	Tony Wahl	445-2155
Modernization & uprate consultations	68440	James Zeiger	445-2850
MODFLOW	68210	Nancy Parker	445-2532
MODSIM river simulation model	68210	Nancy Parker	445-2532
Monetary benefits of actions	68212	Jon Platt	445-2737
Motor boat safety certification	68290	Juddson Sechrist	445-2198
Motors (electric) motor starters, adjustable speed drives	68430	Larry Rossi	445-2820
Multidisciplinary team management	68212	Susan Black	445-2705
Multimedia presentations	68010	Cindy Gray	445-2615

N

National Environmental Policy Act (NEPA) compliance	68212	Susan Black	445-2705
Native American Affairs client liaison	68250	Dave Fisher	445-2542
Native American water rights, economic investigations	68212	Steve Piper	445-2736
Native fisheries research / surveys	68290	Catherine Karp	445-2226
Natural resources planning	68210	John Osterberg	445-2462
Natural soil & rock slopes & landslides	68311	Giorgia DeWolfe	445-3027
New projects, specification drawings, geotechnical	68313	Bob Dewey	445-2976
New work, scope of	68010	See Specific Client Liaison on page 12	
Newsletter production & publication	68010	Susan Ward	445-2690
NEXRAD precipitation analysis	68250	John England	445-2541
NOAA River Forecast Center interface	68210	Subhrendu Gangopadhyay	445-2465
Non-consumptive use demands	68212	Jon Platt	445-2737
Nondestructive testing of dams & other concrete structures	68180	Bill Kepler	445-2386
Nonlinear structural analysis	68110	Barbara Mills-Bria	445-3229
Nonparametric statistical analysis	68250	John England	445-2541

Technical Service Center Directory

Non-physical fish barriers	68290	Mark Bowen	445-2222
Nonuse water values	68212	David Harpman	445-2733
Numerical analysis & modeling of structures & foundations	68311	Ashok Chugh	445-3026
Numerical modeling-fluid flow	68460	James Higgs	445-2147
O			
Occupational health	68221	Mike Simonavice	445-2196
Oil purification & lubrication systems	68410	Randy Egan	445-2855
Operation & maintenance manuals (water systems)	68360	Charlie Swanson	445-2757
Operation & maintenance training (power systems)	68440	James Zeiger	445-2850
Operations support functions client liaison	68010	Christi Young	445-2561
OPSTUDY	68210	Nancy Parker	445-2532
Optimization, economic investigations	68212	Jon Platt	445-2737
Other government agencies client liaison	68010	Christi Young	445-2561
Outlet works	68130	John Trojanowski	445-3263
P			
P&A (GAE) client liaison	68010	Christi Young	445-2561
Pacific Northwest (PN) Region client liaison	68212	Paula Engel	445-2732
Paint & coatings	68180	Bill Kepler	445-2386
Paleoflood database	68330	Jeanne Godaire	445-3164
Paleoflood Hydrology	68330	Ralph Klinger	445-3173
Particle imaging velocimetry	68460	Joseph Kubitschek	445-2148
PASS studies	68170	Bob Baumgarten	445-3076
Passive treatment systems	68220	G. Chris Holdren	445-2178
PDF publications	68010	Cindy Gray	445-2615
Penstock & Pipe Inspection Program	68410	Bill McStraw	445-2294
Petrographic analysis	68180	Doug Hurcomb	445-2336
Photogeologic mapping	68320	Lloyd Crutchfield	445-3074
Photogrammetry	68330	Matt Jones	445-3198
Photography (local & remote)	68010	Susan Ward	445-2690
Phreatophyte control	68220	Scott O'Meara	445-2216
Physical property test, cement, concrete, & aggregates	68180	Bill Kepler	445-2386
Physical property test, pipe, plastics, geomembranes	68180	Bill Kepler	445-2386
Physiology of fish stress	68290	Don Portz	445-2220
Piezometers	68360	DeWayne Campbell	445-3052
Pile design	68312	Elizabeth Ouellette	445-3036
Pilot-scale testing of water treatment	68221	G. Chris Holdren	445-2178
Pipe gaskets, guide specifications	68180	Bill Kepler	445-2386
Pipelines	68140	Linda Bowles	445-3114
Pipelines, specification drawings, geotechnical	68311	Jack Gagliardi	445-2969
Piping & seepage, embankment dams & foundations	68313	Dennis Hanneman	445-2958
Plain language editing	68010	Deena Larsen	445-2584

Planning engineering	68140	Jesus Romero	445-3124
Planning for managing sediment, fish, vegetation, & rivers	68240	Jennifer Bountry	445-3614
Planning studies	68212	Jon Platt	445-2737
Planning, plan formulation	68212	Charles Borda	445-2728
Plant control & automation	68430	Larry Rossi	445-2820
Plant foundations, investigation & analysis	68320	Lloyd Crutchfield	445-3074
Plant Structures Group	68120	Al Bernstein	445-3275
Plants, electrical	68430	Larry Rossi	445-2820
Plants, seismic analysis	68140	Tim Brown	445-3709
Plastics technology	68180	Jay Swihart	445-2397
Plastics testing	68180	Jay Swihart	445-2397
Plastics, forensic evaluation of failures	68180	Bill Kepler	445-2386
Plumbing systems	68410	Randy Egan	445-2855
Population at risk (flood)	68250	David Fisher	445-2542
Posters	68010	Cindy Gray	445-2615
Power & transmission systems	68440	Shawn Patterson	445-2311
Power & transmission systems, electrical design	68430	George Girgis	445-2310
Power & water facility automation systems	68440	James Zeiger	445-2850
Power apparatus & power system testing	68440	Jim DeHaan	445-2305
Power Equipment Bulletins	68440	James Zeiger	445-2850
Power generation system, computer modeling	68440	Shawn Patterson	445-2311
Power incident investigation & root cause analysis	68440	Jim DeHaan	445-2305
Power O&M Conference administration	68440	James Zeiger	445-2850
Power O&M program	68440	James Zeiger	445-2850
Power O&M review of electrical & mechanical features	68440	James Zeiger	445-2850
Power system & apparatus testing	68440	Jim DeHaan	445-2305
Power system analysis	68440	Jim DeHaan	445-2305
Power system harmonics	68440	Jim DeHaan	445-2305
Power system models	68440	Shawn Patterson	445-2311
Power system models, electrical design	68430	George Girgis	445-2310
Power system stability & stabilizers	68440	J. C. Agee	445-2309
Power system waterways hydraulic transients	68420	Dan Drake	445-2874
Power system waterways, design	68140	Jesus Romero	445-3124
Power transformers	68430	Doug Crawford	445-2290
Powerformer	68440	James Zeiger	445-2850
Powerplant & pumping plant layout	68120	Al Bernstein	445-3275
Powerplant automation system life cycle management	68440	James Zeiger	445-2850
Powerplant automation system replacement & upgrade	68440	James Zeiger	445-2850
Powerplant auxiliary mechanical equipment	68410	Randy Egan	445-2855
Powerplant feedback control system technical assistance	68440	J. C. Agee	445-2309
Powerplant feedback control system testing	68440	J. C. Agee	445-2309

Technical Service Center Directory

Powerplant O&M training	68440	James Zeiger	445-2850
Powerplant optimization	68440	Toby Steves	445-3258
Powerpoint presentations	68010	Cindy Gray	445-2615
Pozzolan testing	68180	Bill Kepler	445-2386
Precipitation analysis & prediction	68250	John England	445-2541
Precipitation frequency	68250	John England	445-2541
Predation research	68290	Mark Bowen	445-2222
Presentation graphics	68010	Cindy Gray	445-2615
Presentation of Reclamation activities in technical symposia	68180	Bill Kepler	445-2386
Preservation of historic structures (documents)	68010	Jim Bailey	445-2704
Pressure vessel testing & inspection	68410	Bill McStraw	445-2294
Probability analysis	68330	Chris Wood	445-3187
Probable maximum flood (PMF)	68250	John England	445-2541
Probable maximum precipitation (PMP)	68250	John England	445-2541
Program & Policy Services client liaison	68010	Christi Young	445-2561
Program analysts & assistants	68010	See Specific Client Liaison on page 12	
Project Alternative Solutions Study (PASS)	68170	Bob Baumgarten	445-3076
Project management for planning & research projects	68212	Susan Black	445-2705
Propane & diesel engines, generators	68410	Rick Christensen	445-2858
Protective coatings technology (paint)	68180	Allen Skaja	445-2396
Protective relay calibration & testing	68440	Jim DeHaan	445-2305
Protective relaying	68440	Shawn Patterson	445-2311
Protective system testing	68440	Jim DeHaan	445-2305
Public involvement	68212	Susan Black	445-2705
Public meeting facilitation	68212	Susan Black	445-2705
Public safety assessments	68360	Chris Danley	445-2755
Publication graphics	68010	Cindy Gray	445-2615
Publication layout & editing	68010	Patty Alexander	445-2574
Pump evaluation, fish friendly	68290	Raymond Bark	445-2204
Pumps & turbines, efficiency testing	68410	Dave Hulse	445-2881
Pumps, hydraulic equipment	68420	Dan Drake	445-2874

Q

Quagga mussels	68220	Denise Hosler	445-2195
Quality assurance -quality control (QA/QC)	68220	Chris Holdren	445-2178
Quantitative precipitation estimation	68250	David Fisher	445-2542
Quantitative precipitation forecasts	68250	David Fisher	445-2542
Quaternary geology	68330	Dan Levis	445-3175

R

Radar estimation of precipitation	68250	David Fisher	445-2542
Radio telemetry	68460	Tom Gill	445-2201
Real-time control & data acquisition software	68440	James Zeiger	445-2850
Reclamation Auto Modified Einstein Procedure (BORAMEP)	68240	Blair Greimann	445-2563
Reclamation of underground & surface mines	68313	Michael Gobla	445-3032
Record of Decisions (RODs)	68010	Patty Alexander	445-2574
Records liaison	68010	Jim Bailey	445-2704

Records management, AutoCAD	68322	Dave Martinez	445-2997
Recreation	68212	Steve Piper	445-2736
Recreation analysis	68212	Jon Platt	445-2737
Recreation demand	68212	Jon Platt	445-2737
Recreation needs assessment	68212	Steve Piper	445-2736
Recreation site landscaping	68120	John Pattie	445-3273
Recreation supply	68212	Jon Platt	445-2737
Recreation surveys	68212	Jon Platt	445-2737
Recreation use, Impacts on local economies from changes	68212	Paula Engel	445-2732
Recreational activities, economic values	68212	David Harpman	445-2733
Recreation-use benefits	68212	David Harpman	445-2733
Regional Atmospheric Modeling System (RAMS)	68210	John England	445-2541
Regional or local impacts, economic investigations	68212	Paula Engel	445-2732
Reinforced concrete	68120	Al Bernstein	445-3275
Relay testing	68440	Jim DeHaan	445-2305
Remediating existing projects, specification drawings	68313	Bob Dewey	445-2976
Remote camera	68330	Rich Markiewicz	445-3167
Remote Sensing & Geographic Information Team	68251	Doug Clark	445-2271
Remote terminal unit (RTU) (custom programmable)	68440	James Zeiger	445-2850
Repayment capacity studies, economic investigations	68212	Rob Davis	445-2730
Repayment, irrigated agriculture	68212	Rob Davis	445-2730
Replacement, Operations, and Maintenance (RO&M)	68360	Charlie Swanson	445-2757
Report writing, editing, publishing	68010	Deena Larsen	445-2584
Reptiles	68290	David Moore	445-2242
Research to solve biological problems	68290	Don Portz	445-2220
Research to solve economic "real world" problems	68212	David Harpman	445-2733
Research-related activities client liaison	68010	Christi Young	445-2561
Reservoir area & capacity tables	68240	Ronald Ferrari	445-2551
Reservoir current measurements	68460	Tracy Vermeyen	445-2154
Reservoir fisheries research	68290	Juddson Sechrist	445-2198
Reservoir lining	68180	Bill Kepler	445-2386
Reservoir monitoring & management	68220	G. Chris Holdren	445-2178
Reservoir operations (hydrologic modeling)	68240	Ronald Ferrari	445-2551
Reservoir responses to change	68240	Tim Randle	445-2557
Reservoir sediment management & release	68240	Tim Randle	445-2557
Reservoir sediment sampling & management	68240	Ronald Ferrari	445-2551
Reservoir sedimentation	68240	Tim Randle	445-2557
Reservoir sedimentation design & methods	68240	Tim Randle	445-2557
Reservoir sedimentation O&M & practices	68240	Tim Randle	445-2557
Reservoir selective withdrawals	68460	Tracy Vermeyen	445-2154
Reservoir surveys	68240	Ronald Ferrari	445-2551

Technical Service Center Directory

Resistivity	68330	Rich Markiewicz	445-3167
Resource management & planning	68212	Charles Borda	445-2728
Resource study initiation	68212	Steve Piper	445-2736
Restoration structures	68240	Drew Baird	445-2564
Retaining wall designs	68311	Ashok Chugh	445-3026
Retaining walls/tiebacks/anchors	68311	Ashok Chugh	445-3026
Review boards for evaluation of concrete construction	68180	Bill Kepler	445-2386
Review of economic studies, technical adequacy & policy	68212	Steve Piper	445-2736
Review of Operation, & Maintenance (RO&M)	68360	Charlie Swanson	445-2757
Riparian & wetland studies	68220	Mark S. Nelson	445-2225
Riparian assessment	68290	Gregory Reed	445-2208
Riparian habitat enhancement	68220	Mike Horn	445-2203
Riparian vegetation modeling	68140	Linda Bowles	445-3114
Rip-rap & erosion control analysis & design	68313	Bob Dewey	445-2976
Rip-rap & erosion control slope protection	68313	Bob Dewey	445-2976
Risk analyses	68300	Bill Engemoen	445-2960
Risk analyses of dam failure & operational releases	68250	Bruce Feinberg	445-3241
Risk analysis (hydrologic modeling)	68250	David Fisher	445-2542
Risk assessment, dams	68300	Bill Engemoen	445-2960
Risk reduction alternatives at unsafe dams	68300	Dan Osmun	445-2980
Risk-based profiling	68300	Bill Fiedler	445-3248
River & reservoir modeling	68240	Ronald Ferrari	445-2551
River & reservoir surveys	68240	Ronald Ferrari	445-2551
River basin applications	68210	Subhrendu Gangopadhyay	445-2465
River basin simulation models	68210	Subhrendu Gangopadhyay	445-2465
River channel stability assessment	68140	Linda Bowles	445-3114
River hydraulics & river mechanics	68240	Tim Randle	445-2557
River improvements	68140	Jesus Romero	445-3124
River responses to change	68240	Tim Randle	445-2557
River restoration analysis & design (sediment transport)	68240	Tim Randle	445-2557
River restoration plans	68140	Linda Bowles	445-3114
River system optimization simulations	68210	Nancy Parker	445-2532
Riverine ecosystem enhancement	68240	Jennifer Bountry	445-3614
Riverware	68210	Del Smith	445-2516
Riverware Power & Reservoir Modeling System	68210	Del Smith	445-2516
Roads	68140	Mark Leavitt	445-3227
Rock construction control/materials testing	68180	Bill Kepler	445-2386
Rock core testing	68180	Bill Kepler	445-2386
Rock laboratory testing	68180	Zeynep Erdogan	445-2348
Rock map classifications	68320	Lloyd Crutchfield	445-3074
Rock material testing (geotechnical)	68312	Jack Touseull	445-2346
Rock mechanics	68312	Joe Kottenstette	445-2966
Rock mechanics & blasting design, geologic analysis	68320	Lloyd Crutchfield	445-3074
Rock mechanics analysis & design	68312	Mike Romansky	445-2970

Rock mechanics testing	68180	Bill Kepler	445-2386
Rock research & testing	68180	Zeynep Erdogan	445-2348
Roller compacted concrete	68180	Bill Kepler	445-2386
Rope access	68320	Rob Lung	445-3190

S

Safe Drinking Water Act compliance	68221	G. Chris Holdren	445-2178
Safety of Dams (SOD) inspections	68360	Chris Danley	445-2755
Safety of Dams, economic investigations	68212	Rob Davis	445-2730
Safety of Existing Dams (SEED) examinations	68360	Chris Danley	445-2755
Safety, grounding & plant electrical	68440	Jim DeHaan	445-2305
Salinity control studies	68220	Chris Holdren	445-2178
Satellite imagery	68251	Doug Clark	445-2271
Satellite network	68440	Jim DeHaan	445-2305
SCADA software evaluation & development	68440	Vince Hoang	445-2836
SCADA system design support	68440	Shawn Patterson	445-2311
SCADA system security	68440	James Zeiger	445-2850
SCADA, modular	68440	James Zeiger	445-2850
SCADA, propriety	68430	George Girgis	445-2310
Scale models	68460	Bob Einhellig	445-2142
Scanning documents, high resolution	68251	Doug Clark	445-2271
Science & Technology client liaison	68010	Christi Young	445-2561
Scoping new study objectives, technical tasks & costs	68212	Rob Davis	445-2730
Scour & degradation predictions	68240	Blair Greimann	445-2563
Sealants & sealers	68180	Rick Pepin	445-2391
Sealants, guide specifications	68180	Bill Kepler	445-2386
Sealing mine shafts & adits	68313	Mike Gobla	445-3032
Sediment models, manuals, & guidelines	68240	Blair Greimann	445-2563
Sediment physical & chemical testing	68180	Bill Kepler	445-2386
Sediment removal options	68240	Ronald Ferrari	445-2551
Sediment transport modeling	68240	Blair Greimann	445-2563
Sedimentation & River Hydrology Group	68240	Tim Randle	445-2557
Sedimentation impacts evaluation & modeling	68240	Tim Randle	445-2557
Sedimentation: Meander: Lateral Migration	68240	Blair Greimann	445-2563
Sedimentation: Sediment Impact Analysis Methods (SRH-SIAM)	68240	Blair Greimann	445-2563
Sedimentation: Vegetation Module (SRH-1DV)	68240	Blair Greimann	445-2563
Sedimentation-One Dimension (SRH-1D)	68240	Blair Greimann	445-2563
Sedimentation-Two Dimensions (SRH-2D)	68240	Yong Lai	445-2560
SEED & SOD client liaison	68312	Will Gonzales	445-3149
Seepage analyses, structures	68300	Dan Osmun	445-2980
Seepage control design	68300	Dan Osmun	445-2980
Seepage control workshops	68180	Jay Swihart	445-2397
Seepage geochemistry	68220	G. Chris Holdren	445-2178
Seepage measurements	68360	DeWayne Campbell	445-3052

Technical Service Center Directory

Seepage studies, geologic analysis	68320	Lloyd Crutchfield	445-3074
Seepage/groundwater modeling	68311	Chris Slaven	445-3046
Seismic analysis & design	68313	Dave Gillette	445-2994
Seismic deformation analyses	68313	Dave Gillette	445-2994
Seismic evaluation of buildings	68140	Tim Brown	445-3709
Seismic hazard analysis	68330	Feng Su	445-3209
Seismic networks	68330	Chris Wood	445-3187
Seismic refraction & reflection	68330	Rich Markiewicz	445-3167
Seismological studies	68330	Chris Wood	445-3178
Seismotectonic field mapping	68330	Dan Levis	445-3175
Seismotectonic studies	68320	Dan Levis	445-3175
Selective withdrawal structures	68120	Al Bernstein	445-3275
Selective withdrawal systems	68410	Dave Hulse	445-2881
Selenium removal (biochemical)	68120	Scott Irvine	445-2253
Selenium removal research	68221	Chris Holdren	445-2178
Service agreements developed	68010	See Specific Client Liaison on page 12	
Service/unit/plant water systems	68410	Randy Egan	445-2855
Settlement & bearing capacity analyses	68312	Jack Touseull	445-2346
Settling basin design	68240	Tim Randle	445-2557
Shear strength	68320	Jeff Farrar	445-2333
Shear wave velocity	68330	Lisa Block	445-3171
Sheet pile walls, cellular, & other types of cofferdams	68311	Ron Oaks	445-2975
Shops, Laboratory	68460	Bob Einhellig	445-2142
Shotcrete	68180	Kurt VonFay	445-2399
Sieve certification	68180	Bill Kepler	445-2386
Site characterization	68311	Lloyd Crutchfield	445-3074
Site layout & design	68120	Al Bernstein	445-3275
Site selection for hydraulic structures,	68140	Jesus Romero	445-3124
Site-specific river basin applications	68210	Subhrendu Gangopadhyay	445-2465
Slides for presentations	68010	Cindy Gray	445-2615
Slope protection evaluation & design	68313	Bob Dewey	445-2976
Slopes (soil & rock) specification drawings	68312	Mike Romansky	445-2970
Slopes, natural soil & rock (including landslides)	68312	Mike Romansky	445-2970
Smelters	68313	Michael Gobla	445-3632
Snake studies	68290	David Moore	445-2242
Snow analysis & prediction	68250	David Fisher	445-2542
Snow Estimation & Updating System (SEUS)	68250	David Fisher	445-2542
Social analysis, impacts of government actions	68212	Susan Black	445-2705
Software documentation	68010	Christi Young	445-2561
Soil & rock sampling/in situ testing	68320	Jeff Farrar	445-2333
Soil & rock slope landslides	68313	Jonathan Harris	445-2959
Soil chemistry	68180	Bill Kepler	445-2386
Soil classification	68320	Jeff Farrar	445-2333
Soil dating	68330	Lucy Piety	445-3185
Soil instrumentation analysis & layout	68360	Jay Stateler	445-3064
Soil mechanics testing	68180	Zeynep Erdogan	445-2348
Soil modification	68313	Bob Dewey	445-2976

Soil physical & chemical testing	68180	Bill Kepler	445-2386
Soil testing & research	68180	Zeynep Erdogan	445-2348
Soil, rock, & foundation material research & testing	68311	Jack Gagliardi	445-2969
Soils	68311	Dennis Hanneman	445-2958
Soil-structure interaction modeling	68110	Barbara Mills-Bria	445-3229
Solar ponds	68221	G. Chris Holdren	445-2178
Solar powered pumping	68221	G. Chris Holdren	445-2178
Specialized testing	68180	Bill Kepler	445-2386
Specifications constructability reviews	68170	James Macartney	445-3296
Specifications drawings	68322	Dave Martinez	445-2997
Specifications preparation & review	68170	Greg Gulsvig	445-3082
Speeches & presentations	68010	Deena Larsen	445-2584
Spillways	68130	John Trojanowski	445-3263
SSLE client liaison	68312	Bitsy Cohen	445-3247
Standard drawings	68170	Greg Gulsvig	445-3082
Standard penetration tests (SPT)	68320	Lloyd Crutchfield	445-3074
Standing Operating Procedures (SOPs)	68360	Charlie Swanson	445-2757
Standing Operating Procedures (writing, editing, formatting)	68010	Deena Larsen	445-2584
Statements of work (SOWs)	68170	Greg Gulsvig	445-3082
State-of-the-art technical review & senior advisory services	68313	Bob Dewey	445-2976
Static stability analyses	68311	Ashok Chugh	445-3026
Statistical data analysis	68290	Mark Bowen	445-2222
Stereographic photography	68320	Lloyd Crutchfield	445-3074
Stochastic Analysis, Modeling and Simulation (SAMS)	68250	John England	445-2541
Stoplogs	68410	Dave Hulse	445-2881
Strategic plans, annual reports	68010	Glenna Berg	445-2577
Stream gauging	68460	Tracy Vermeyen	445-2154
Stream restoration	68240	Tim Randle	445-2557
Streamflow forecasting	68250	John England	445-2541
Strength & elastic properties testing of concrete	68180	Bill Kepler	445-2386
Strength & elastic properties testing of metals	68180	Daryl Little	445-2384
Stress analyses	68311	Giorgia DeWolfe	445-3027
Stress evaluation (fish)	68290	Don Portz	445-2220
Stress measurement & nondestructive testing	68440	James Zeiger	445-2850
Strong motion monitoring & instrumentation	68330	Chris Wood	445-3187
Structural Analysis Group	68110	Barbara Mills-Bria	445-3229
Structural behavior & instrumentation	68360	DeWayne Campbell	445-3052
Structural foundation analysis & design	68311	Ryan Woodruff	445-2334
Structural materials (concrete, steel, rock, soil,) test	68180	Bill Kepler	445-2386
Structural modeling & testing	68180	Bill Kepler	445-2386

Technical Service Center Directory

Structural steel	68120	Rodney Barthel	445-3221
Structural vibration	68180	Bill Kepler	445-2386
Structure foundations, specification drawings	68311	Ryan Woodruff	445-2334
Structures, field testing	68180	Bill Kepler	445-2386
Structures, historic preservation	68180	Kurt VonFay	445-2399
Structures, seismotectonic evaluation	68330	Barbara Mills-Bria	445-3229
Subsurface exploration & sampling	68320	Lloyd Crutchfield	445-3074
Sulfate durability testing	68180	Bill Kepler	445-2386
Surface & groundwater conjunctive relationships	68210	Del Smith	445-2516
Surface & groundwater interaction analysis	68210	Del Smith	445-2516
Surface water hydrology	68210	Thomas Perry	445-2567
Surface water runoff modeling	68210	Subhrendu Gangopadhyay	445-2465
Swimming performance	68290	Zak Sutphin	445-2141
Switchyard & substation civil engineering design & layout	68120	Rodney Barthel	445-3221
Switchyard, switchgear, & station service electrical design	68430	Lisa Gamuciello	445-2835
Synchronous motor starting & testing	68440	Jim DeHaan	445-2305

T

Tailings dams	68313	Michael Gobla	445-3032
Tailings dams, geotechnical engineering	68313	Michael Gobla	445-3632
Technical climbing services for dams, spillways, & powerplants	68180	Bill Kepler	445-2386
Technical engineering drawings	68322	Dave Martinez	445-2997
Technical Presentations	68010	Christi Young	445-2561
Technical publications library	68313	Bob Dewey	445-2976
Technical reports	68010	Patty Alexander	445-2574
Technology transfer & standards development	68180	Bill Kepler	445-2386
Tectonic settings of features	68330	Dan Levis	445-3175
Telemetry of fish and wildlife	68220	Mike Horn	445-2203
Temperature sensors	68410	Rick Christensen	445-2858
Technical review & contractor claim analysis	68180	Bill Kepler	445-2386
Technical standards for construction materials	68180	Bill Kepler	445-2386
Technical team management	68212	Charles Borda	445-2728
Technical update lectures	68000	Elizabeth Snodgrass	445-2720
Terrestrial photogrammetry	68320	Lloyd Crutchfield	445-3074
Testing machine, calibration	68180	Bill Kepler	445-2386
Thermal properties testing	68180	Bill Kepler	445-2386
Tomography	68330	Lisa Block	445-3171
Toxicity evaluation of aquatic systems	68220	G. Chris Holdren	445-2178
Track existing work for accomplishment	68010	See Specific Client Liaison on page 12	
Training materials development	68010	Deena Larsen	445-2584
Training of foreign technical specialists	68180	Bill Kepler	445-2386
Training, guidance on economic & financial technical issues	68212	Steve Piper	445-2736
Transformer design	68430	Bill Heckler	445-6304
Transformer diagnostics	68440	Jim DeHaan	445-2305

Transformers, neutral grounding	68430	Larry Rossi	445-2820
Trash rakes, conveyors, & cleaning equipment	68410	Rick Christensen	445-2858
Traveling water screens	68410	Rick Christensen	445-2858
Troubleshooting mechanical equipment	68410	John Shisler	445-2869
TSC Business Manager	68010	Tom Luebke	445-2600
Tunnel communications	68440	Jim DeHaan	445-2305
Tunnel mapping	68320	Lloyd Crutchfield	445-3074
Tunnels	68140	Kevin Atwater	445-3113
Turbine design	68420	Dan Drake	445-2874
Turbines, efficiency testing	68410	Dave Hulse	445-2881
Turtle surveys	68290	David Moore	445-2242

U

U2RANS	68240	Yong Lai	445-2560
Underground excavations	68312	Mike Romansky	445-2970
Underground excavations, specification drawings	68312	Mike Romansky	445-2970
Underground geologic mapping & methods	68320	Lloyd Crutchfield	445-3074
Underwater blast analysis	68110	Barbara Mills-Bria	445-3229
Underwater inspection service	68410	Bill McStraw	445-2294
Underwater video technology	68290	Don Portz	445-2220
Undisturbed sampling	68320	Lloyd Crutchfield	445-3074
Uniaxial vibration testing, 50,000-lb payload	68180	Fred Travers	445-2398
Unit alignment, balancing, & vibration analysis	68410	Roger Cline	445-2293
Unit commitment (generation)	68440	Toby Steves	445-3258
Unit prices	68170	Dan Donaldson	445-3080
Unsteady & Unstructured Reynolds Averaged Navier-Stokes	68240	Tim Randle	445-2557
Upper Colorado (UC) Region client liaison	68212	Charles Borda	445-2728
Uprate studies	68430	Larry Rossi	445-2820
Utility encroachments	68140	Jesus Romero	445-3124

V

Value engineering baseline cost estimates	68170	Dan Maag	445-3084
Value engineering proposal cost estimates	68170	Dan Maag	445-3084
Velocity estimates (modeling)	68240	Yong Lai	445-2560
Vibration, testing & analysis	68410	Roger Cline	445-2293
Video acquisition & processing	68251	Doug Clark	445-2271
Visitor & employee facilities	68410	Randy Egan	445-2855
Visitor centers & office buildings	68120	Al Bernstein	445-3275
Visual identity formatting (print, powerpoint, web)	68010	Patty Alexander	445-2574
Voltage cables (high & medium)	68430	Lisa Gamuciello	445-2835
Voltage regulator alignment & troubleshooting	68440	J. C. Agee	445-2309

Technical Service Center Directory

W

Waste disposal	68313	Michael Gobla	445-3632
Waste dumps	68313	Michael Gobla	445-3632
Waste dumps, geotechnical engineering	68313	Michael Gobla	445-3632
Wastewater analysis	68221	G. Chris Holdren	445-2178
Wastewater treatment systems	68221	G. Chris Holdren	445-2178
Wastewater treatment training	68221	G. Chris Holdren	445-2178
Water & Environmental Resources Division	68200	Craig Albertsen	445-2526
Water augmentation	68210	Subhrendu Gangopadhyay	445-2465
Water conservation & water conservation analysis	68210	Subhrendu Gangopadhyay	445-2465
Water conservation analysis	68210	Mark Spears	445-2514
Water conservation planning	68210	Mark Spears	445-2514
Water conservation practices	68210	Mark Spears	445-2514
Water conservation research	68460	Tom Gill	445-2201
Water Conveyance Group	68140	Tim Brown	445-3709
Water conveyance structure foundations, geologic	68320	Lloyd Crutchfield	445-3074
Water conveyance, hydraulic structure designs & modifications	68140	Jesus Romero	445-3124
Water delivery equipment	68420	Dan Drake	445-2874
Water demand & conservation	68210	Mark Spears	445-2514
Water demand analysis	68212	Steve Piper	445-2736
Water demand modeling	68210	Mark Spears	445-2514
Water hammer analysis	68140	Jesus Romero	445-3124
Water level controls	68410	Rick Christensen	445-2858
Water losses	68210	Del Smith	445-2516
Water management decision support systems	68210	Del Smith	445-2516
Water quality analysis	68221	G. Chris Holdren	445-2178
Water quality assessment	68220	Merlynn Bender	445-2460
Water quality chemical analysis	68220	Kevin Kelly	kkelly@usbr.gov
Water quality models for rivers, reservoirs, streams,	68220	Merlynn Bender	445-2460
Water quality, computer modeling	68220	Merlynn Bender	445-2460
Water remediation of hazardous chemicals	68221	G. Chris Holdren	445-2178
Water requirements	68210	Mark Spears	445-2514
Water resource suitability	68220	Mike Horn	445-2203
Water resources geotechnical projects	68313	Bob Dewey	445-2976
Water Resources Planning & Operations Group	68210	Del Smith	445-2516
Water management software	68210	David Fisher	445-2542
Water markets, economic investigations	68210	Steve Piper	445-2736
Water measurement consulting & training	68460	Tony Wahl	445-2155
Water operation & maintenance program	68360	Charlie Swanson	445-2757
Water Purification Research & Development	68221	G. Chris Holdren	445-2178
Water resources, hydraulic	68460	Tony Wahl	445-2155
Water reuse & recycling	68120	Robert Jurenka	445-2254
Water Reuse & Recycling Title XVI	68221	G. Chris Holdren	445-2178
Water salvage	68210	Mark Spears	445-2514

Water savings	68210	Mark Spears	445-2514
Water stops	68180	Jay Swihart	445-2397
Water supply forecasting	68210	Subhrendu Gangopadhyay	445-2465
Water supply forecasting & planning	68210	David Fisher	445-2542
Water surface profiles (modeling)	68240	Blair Greimann	445-2563
Water system planning, design, & O&M support	68240	Tim Randle	445-2557
Water temperature control devices	68410	Dave Hulse	445-2881
Water Treatment Engineering & Research Team	68221	G. Chris Holdren	445-2178
Water treatment engineering research	68221	G. Chris Holdren	445-2178
Water treatment processes & systems	68221	G. Chris Holdren	445-2178
Water treatment research	68221	G. Chris Holdren	445-2178
Water treatment research & design	68120	Robert Jurenka	445-2254
Water treatment specifications, cost estimates	68221	G. Chris Holdren	445-2178
Water treatment training	68221	G. Chris Holdren	445-2178
Water treatment, innovative technologies	68221	G. Chris Holdren	445-2178
Water treatment, laboratory & bench-scale testing	68221	G. Chris Holdren	445-2178
Water use assessments & efficiency	68210	Mark Spears	445-2514
Water use transfers impacts on income & employment	68212	Paula Engel	445-2732
Watershed analysis	68210	Thomas Perry	445-2567
Watershed hydrology	68210	Thomas Perry	445-2567
Watershed modeling	68210	David Fisher	445-2542
Watershed planning	68210	John Osterberg	445-2462
Watershed processes	68220	Mike Horn	445-2203
Waterways & Concrete Dams Group	68130	John Trojanowski	445-3263
Weather analysis & forecasting	68250	John England	445-2541
Weather forecasts	68250	John England	445-2541
Web page design & development	68010	Deena Larsen	445-2584
Web-based graphics	68010	Cindy Gray	445-2615
Weed control research	68220	Scott O'Meara	445-2216
Welding procedures	68410	Roger Cline	445-2293
Well & well field design	68320	Bob Talbot	445-2518
Well-head protection studies	68210	Roger Burnett	445-2508
Wetland & estuary analysis	68210	David Fisher	445-2542
Wetlands & instream flows, economic values	68212	Jon Platt	445-2737
Wetlands delineation	68290	Kathleen Fenton	445-2274
Wetlands design	68120	John Pattie	445-3273
Wetlands research	68220	Mark S. Nelson	445-2225
Wetlands site landscape design	68120	John Pattie	445-3273
Wetlands, ground water hydrology/ hydraulics	68210	Roger Burnett	445-2508
Wetlands, water conveyance features	68140	Jesus Romero	445-3124
Wildlife management models, GIS based	68290	Kathleen Fenton	445-2274
Wildlife studies	68290	Darrell Ahlers	445-2233

Technical Service Center Directory

Wireless instrumentation	68440	Jim DeHaan	445-2305
Workflow coordination in TSC	68010	Christi Young	445-2561
Writing & editing assistance	68010	Deena Larsen	445-2584

X

Xeriscape	68210	Mark Spears	445-2514
-----------	-------	-------------	----------

Z

Zebra mussel & corbicula control	68220	Denise Hosler	445-2195
----------------------------------	-------	---------------	----------

TSC Employee Telephone Directory (by Work Group)

Technical Service Center – 86-68000		
Director’s Office – Lowell Pimley, Director		
Elizabeth Snodgrass, Executive Assistant – 303-445-2720		
Telephone	303-445-2720	Building 67
Fax	303-445-6379	7 th Floor, East Central

Client Support and Technical Presentations Office– 86-68010		
Christi Young cyoung@usbr.gov – 303-445-2561		
Andrea Moore, Technical Operations Assistant – 303-445-2952		
Fax	303-445-6356	Building 67 7 th Floor, East Central

TSC Business Manager

Luebke, Tom (K88 and K8T) 2600

TSC Environmental Hazardous Waste Coordinator

Simonavice, Mike 86-68220, 2196
Building 56, Room 2010

Client Liaisons

Borda, Chuck (UC) – 86-68212 2728
Cohen, Bitsy (Dam Safety, Security, BIA SOD) 86-68130 3247
Engel, Paula (PN) 86-68212 2732
Fisher, Dave (IA, NAAO) 86-68250 2542
Gill, Tom (GP) 86-68460 2201
Maag, Dan (MP) 86-68170 3084
Svoboda, Connie (LC) 86-68460 2152
Wright, Jacque (K8T, AFA Accounts) 86-68010 2604
Young, Christi (OGA, RO, S&T,P&A, PPS) 86-68010 2561

Technical Presentations

Alexander, Patty 2574
Berg, Glenna 2577
Gray, Cindy 2615
Larsen, Deena 2584
Leffel, Sharon 2585
Manross, Teri 2587
Ward, Susan 2690

Budget and Program Analysts

Carson, Janice (MP, PN, S&T, Credit Card allocation) 3466 2117
Ocana, Susan, (LC, UC) 3178
Parson, Dianne (OGA, RO, PPS, IA, NAAO) 2302
Petersen, Tyna (SSLE, BIA SOD, Dam Safety) 2573
Rademacher, Emily (GP, AFA jobs) 3445
Snodgrass, Elizabeth (P&A, E-TAS) 2720
Wright, Jacque (K88/K8T) 2604

Records Liaison/Historian

Bailey, Jim 2704

Civil Engineering Services Division – 86-68100
Dick LaFond – Division Chief

Collette Williams, Secretary – 303-445-3240

Telephone 303-445-3226
 Fax 303-445-6489

Building 67
 10th Floor Northeast

Structural Analysis Group – 86-68110

Barbara Mills-Bria bmillsbria@usbr.gov – 303-445-3229
 Larissa Casey, Secretary (86-68120) – 303-445-3234

Fax 303-445-6489

Building 67
 4th Floor, Southeast

Dressel, Bill	3267	Liu, Ming	3259
East, Jon	3217	Percell, Phoebe	3253
Hamedian, Sherry	3224	Reynolds, Rose	3239
Jones, Eric	3132	Salamon, Jerzy	3219
Koltuniuk, Roman	3225	Schneider, Jason	2590
Kurzdorfer, Ronnie	3269	Shepherd, Mike	3216
Latham, Stephen	2519	Venturini, Hillery	3281

Plant Structures Group– 86-68120

Al Bernstein abernstein@usbr.gov – 303-445-3275
 Larissa Casey, Secretary – 303-445-3234

Fax 303-445-6489

Building 67
 4th Floor, Northeast

Barthel, Rodney	3221	LeBlanc, Ron	3230
Dham, Riba	2638	Neumaier, Jim	3280
Dundorf, Steve	2263	O'Shea, Kevin	3223
Goplen, Brian	3271	O'Shea, Mike	3272
Huerta, Olaff	3270	Pattie, John	3273
Irvine, Scott	2253	Rodriguez, Bob	2262
Jackson, Brandon	3205	Ruchti, Paul	3290
Jorgensen, Erik	3604	Smith, Nicole	3213
Jurenka, Bob	2254	Snyder, Gary	3282
Kramer, Michael	2946	Tobin, Caleb	3210
Kresin, David	3131	VanOtterloo, Brad	3179
Lajimodiere, Bernie	2996		

Waterways and Concrete Dams Group– 86-68130

John Trojanowski jtrojanowski@usbr.gov – 303-445-3263
 Gia Price, Secretary – 303-445-3268

Fax 303-445-6490

Building 67
 4th Floor, West

Barnes, Sheena	2609	Johnson, Stacy	3277
Benik, Rick	3242	Maier, Patrick	2601
Cohen, Bitsy	3247	Mares, Dan	3252
Dominic, Steve	2379	Markley, John	3254
Ellingson, John	3264	McGovern, Bob	3243
Godaire, David	3249	Scobell, Tom	3706
Hall, Ernie	3244	Stanton, Doug	3265
Hepler, Tom	3261	Stark, Carly	3236
Heyder, Walt	3246	Toothman, Adam	3596
Huggins, Jennifer	2491		

Civil Engineering Services Division – 86-68100 (continued)

Water Conveyance Group– 86-68140
Tim Brown tbrown@usbr.gov – 303-445-3709
 Renee Magalong, Secretary – 303-445-3122

Fax 303-445-6491

Building 67
 4th Floor, Northwest

Atwater, Kevin	3113	Ledezma, Gabriel	3137
Baysinger, Jeff	3194	Lorberau, Jeremy	3118
Bowles, Linda	3114	Pavol, Anne	3116
Cha, Chou	3129	Robertson, Steve	3123
Clough, Nick	3112	Romero, Jesus	3124
Duke, Chris	3120	Sanders, James	3001
Gemperline, Joe	2483	Sayer, Ken	3125
Gesundheit, Dave	3119	Streifel, Art	3126
Joyce, Charlie	2863	Wagner, Jason	3136
Latham, Amy	3140	Yokoyama, Kenneth	2014
Leavitt, Mark	3227		

Estimating, Specifications and Construction Management Group– 86-68170

Bob Baumgarten rbaumgarten@usbr.gov – 303-445-3076
 Collette Williams, Secretary – 303-445-3240

Fax 303-445-6475

Building 67
 Room 1020

Akins, Greg	3093	Lender, Nancy	3299
Allen, Jeff	3303	Maag, Dan	3084
Arthur, Nancy	3078	Macartney, Jamie	3296
Babcock, John	3095	Magalong, Connie	3085
Bailey, Ian	3073	Mar, Dan	2872
Carbone, Linda C.	3739	McKelvie, David	3099
Cardon, Diana	3301	Mitzelfeld, William	3096
Carlson, Rob	3077	Morris, Jeff	3373
Donaldson, Dan	3080	Power, Kate (contractor)	3276
Frazar, Ed	3297	Siebert, Gary	3089
Grush, Craig	3081	Strozinski, Katherine	3226
Gulsvig, Greg	3082	Yepez, Shanna	3485
Haley, Keith	2899	Zander, Jerry	3088
Hanke, Tom	3083	Zlomke, Lonnie	3087

Bend, OR (86-68170) Welsh, Robert 541-383-0453

Butte, MT (86-68172) Brockman, Ken 406-565-0383

Materials Engineering and Research Laboratory – 86-68180

Bill Kepler wkepler@usbr.gov – 303-445-2386
 Gloria Lopez – 303-445-2381

Fax 303-445-6341

Building 56
 Room 1400

Bartojay, Katie	2374	Poos, Brandon	2389
Battle, Jakym	2361	Rinehart, Robert V.	2395
Baumgarten, Brian	2386	Robertson, Bret	2316
Buck, John	2390	Sears, Lee	2392
Dowling, Casey	2361	Singh, Shawn	2361
Erdogan, Zeynep	2348	Skaja, Allen	2396
Hurcomb, Doug	2336	Starbuck, David	2317
Jackson, Bethany	2387	Strauss, Tom	2343
Joy, Westin	2382	Swihart, John J. (Jay)	2397
Little, Daryl	2384	Tordonato, David	2394
Madera, Veronica	2424	Travers, Fred	2398
Mitchell, Mark	2381	Turcotte, Roger	2383
Ngozi-Bullock, Khadija	2375	VonFay, Kurt	2399
Pepin, Rick	2391	White, Janet	2373

Water and Environmental Resources Division – 86-68200
Craig Albertsen – Division Chief

Annette Vigil, Secretary – 303-445-2537

Telephone 303-445-2526 Building 67
 Fax 303-445-6351 Room 500

Water Resources Planning and Operations Support Group – 86-68210

Del Smith dmsmith@usbr.gov – 303-445-2516

Jennifer Vaughn, Secretary – 303-445-2469

Fax 303-445-6351 Building 67
 Room 515

Blickenstaff, Kristine	2507	Osterberg, John	2462
Burnett, Roger	2508	Parker, Nancy	2532
Condon, Laura	2232	Perry, Thomas	2567
Ferguson, Ian	2513	Pruitt, Tom	2512
Gangopadhyay, Subhrendu	2465	Spears, Mark	2514
Harrison, Alan	2459	Vandegrift, Todd	2534

Economics and Resource Planning Team– 86-68212

Steve Piper spiper@usbr.gov – 303-445-2736

Fax 303-445-6380

Black, Susan	2705	Harpman, David	2733
Borda, Charles	2728	Munger, Dawn	2734
Davis, Rob	2730	Orlicky, Amy	2792
Engel, Paula	2732	Platt, Jonathan	2737
Gaston, Todd	2738	Redhorse, Rebecca	2710

Environmental Applications and Research Group– 86-68220

Chris Holdren choldren@usbr.gov – 303-445-2178

Joan Casement, Secretary – 303-445-2017

Fax 303-445-6328 Building 56
 Room 2010

Andersen, Doug*	2209	Kelly, Kevin	866-476-4550
Bender, Merlynn	2460	Murphy, Andy	2236
Broderick, Susan	2235	Nelson, Mark S.	2225
Daniels, Joan*	2212	Nibling, Fred	2202
Haegele, Jeanette*	2230	O'Meara, Scott	2216
Horn, Mike	2203	Simonavice, Mike	2196
Hosler, Denise	2195	Wydoski, Rick	2207

*U.S. Geological Survey

Water Treatment Engineering Research Team – 86-68221

Chris Holdren choldren@usbr.gov – 303-445-2178

Chapman, Michelle	2264	Leitz, Frank	2255
Dahm, Katherine	2495	Porras-Mendoza, Yuliana	2265
Delagah, Saied	2248	Tiffenbach, Andrew	2393
Guerra, Katherine	2013		

Water and Environmental Resources Division – 86-68200 (continued)

Sedimentation and River Hydraulics Group – 86-68240
Tim Randle trandle@usbr.gov – 303-445-2557
 Amy Goodrich, Secretary – 303-445-2536

Fax 303-445-6351 Building 67
Room 570

Baird, Drew	2564	Huang, Victor (Jachun) IPA employee	2158
Bountry, Jennifer	3614	Kimbrel, Sean W.	2539
Carlson, Jay	2270	Klumpp, Cassie	2554
Collins, Kent	2549	Lai, Yong	2560
Dombroski, Dan	2570	Makar, Paula	2555
Ferrari, Ron	2551	Oliver, Jan (Karri)	2281
Fotherby, Lisa	2476	Russell, Kendra	2552
Gordman, Elaina	2550	Sixta, Mike	2568
Greimann, Blair	2563	Varyu, David	2535
Hilldale, Rob	3135	Wille, Kurt	2285

Flood Hydrology and Emergency Management Group – 86-68250
Dave Fisher dfisher@usbr.gov – 303-445-2542
 Amy Goodrich, Secretary – 303-445-2536

Fax 303-445-6351 Building 67
Room 582

Brom, Kelly	3464	Larson, William (Mike)	2531
Caldwell, Jason	2536	Martin, Peter	2588
Collins, Colette	2540	Mauney, Lee	2464
Dworak, Frank	2547	Novembre, Nicole	2543
England, John	2541	Nuanes, Sharon	2533
Feinberg, Bruce	3241	Sankovich, Victoria	2474
Kallio, Rebecca	2553	Soddell, Jade	2538
Kamstra, Lex	2544	Swain, Bob	2525
Kinkel, Brenda	2530	Wright, Joseph	2463
Krest, Lisa	3260		

Remote Sensing and Geographic Information Team – 86-68251
 Douglas Clark, Acting – 303-445-2271

Bell, Alan	2268	Salas, David	3619
Clark, Doug	2271	Whitesell, Bruce	2287
Eckhardt, David	2273	Wright, Patrick	2288
Goettlicher, Bill	2275		

Fisheries and Wildlife Resources Group – 86-68290
Sharon Taylor sktaylor@usbr.gov – 303-445-2052
 Joan Casement, Secretary – 303-445-2017

Fax 303-445-6490 Building 56
Room 2010

Ahlers, Darrell	2233	Karp, Catherine	2226
Bark, Ray	2204	Moore, Dave	2242
Bernal, Yvonne	2205	Ponnferrada, Norm	2234
Best, Eric	2179	Portz, Donald	2220
Bowen, Mark	2222	Reed, Greg	2208
Cartensen, Durel	2218	Sechrist, Juddson	2198
Fenton, Kathy	2274	Siegle, Rebecca	2237
Hueth, Chuck	2183	Sutphin, Zak	2141
Hutcherson, Jarod	2011		

Geotechnical Services Division – 86-68300
Karen Knight – Division Chief

Karen Johnson, Secretary – 303-445-3289

Telephone 303-445-3044
 Fax 303-445-6432 North
 Fax 303-445-6472 South

Building 67
 11th Floor

Risk Advisory Team – 86-68300

Bill Engemoen, wengemoen@usbr.gov – 303-445-2960

Bill Fiedler, wfiedler@usbr.gov – 303-445-3248

Dan Osmun, dosmun@usbr.gov – 303-445-2980

Embankment Dams and Geotechnical Engineering Group 1 – 86-68311

Dennis Hanneman, dhanneman@usbr.gov – 303-445-2958

Sharon Schipper, Secretary – 303-445-3024

Fax 303-445-6432

Building 67
 11th Floor North

Chugh, Ashok	3026	Slaven, Chris	3046
DeWolfe, Giorgia	3027	Stevens, Scott	3039
Dixon, Leif	3071	Sutley, Garrett	3047
Ellis, Christopher	3056	Vail, Mike	3019
Gagliardi, Jack	2969	Wiltshire, Richard	2973
Howard, Ted	3042	Wittwer, Derek	2978
Irey, Peter	3033	Woodruff, Ryan	2334
Jensen, Navead	3142	Wormer, Jeff	3691
Larrimore, Kevin	2983	Young, Steve (contractor)	3031

Embankment Dams and Geotechnical Engineering Group 2 – 86-68312

Jeanne Major, jmajor@usbr.gov – 303-445-2972

Sheri Hunt-Williams, Secretary – 303-445-2985

Fax 303-445-6472

Building 67
 Room 1181

Bergstrom, Eric	2974	Learned, Cheryl	2773
Coleman, Kristi	2924	McDaniel, Tom	3556
Craig, Paul	2982	Oaks, Ron	2975
Davidson, Ryan	3020	Ouellette, Elizabeth	3036
Galic, Dom	2961	Romansky, Mike	2970
Gonzales, Will	3149	Scott, Bryan	2977
Hughes, Jane	2602	Torres, Roger	2967
Kiene, Al	2965	Touseull, Jack	2346
Kottenstette, Joe	2966	Yu, Jie	2991

Geotechnical Services Division – 86-68300 (continued)

Embankment Dams and Geotechnical Engineering Group 3 – 86-68313

Mike Gobla MGobla@usbr.gov – 303-445-3032
 Sheri Hunt-Williams, Secretary (86-68312) – 303-445-2985

Fax 303-445-6432

Building 67
 11th Floor North

Barraclough, Mark	2987	Gonzalez, Cesar	3228
Bhattacharya, Babi	3184	Hardee, Ken	2998
Bliss, Mark	2988	Harris, Jonathan	2959
Curran, Dave	2992	Hart, Tonya	2968
Dewey, Bob	2976	Kuzniakowski, Randall	3043
Eddy, Greg	2984	Lee, Kevin	3022
Fisk, Gary	2980	McFarland, Tara	2995
Gemperline, Chris	3199	Rudkin, Caleb	3069
Gillette, Dave	2994	Tierney, Tuti	3016

Engineering Geology Group 86-68320

Lloyd Crutchfield lcrutchfield@usbr.gov – 303-445-3074
 Ryan Walker, Secretary – 303-445-3086

Fax 303-445-6507

Building 67
 Room 1075

Earle, John	3152	Sullivan, Chuck	3145
Farrar, Jeff	2333	Talbot, Bob	2518
Heisler, Rebecca	3172	Turlington, Gary	2340
Lung, Robert	3190	Vandenberg, Mark A.	3306
Morton, Mark	3014	Vauk, Jared A.	3147
Simpson, Bryan	3094		

Geotechnical Computer and Technical Support Team– 86-68322

Lloyd Crutchfield lcrutchfield@usbr.gov – 303-445-3074

Martinez, Dave	2997	Strickland, Christopher	2625
Monson, Marshall	3200	Whitfield, Jim	2630

Seismotectonics and Geophysics Group – 86-68330

Dan Levish dlevish@usbr.gov – 303-445-3175
 Ryan Walker, Secretary – 303-445-3086

Fax 303-445-6478

Building 67
 11th Floor

Bauer, Travis	3672	Markiewicz, Rich	3167
Block, Lisa	3171	Piety, Lucy	3185
Derouin, Sarah	3180	Redwine, Joanna	3188
Godaire, Jeanne	3164	Rittgers, Justin	3010
Harden, Tessa	3317	Schubitzke, Paul (contractor)	3365
Jones, Jim	3168	Schwarzer, Justin	3097
Jones, Matt	3198	Su, Feng	3209
Klinger, Ralph	3173	Swaim, Kristen	3037
Liechty, Daniel	3214	Wood, Chris	3187
Liu, Pengcheng	2562		

Geotechnical Services Division – 86-68300 (continued)

Instrumentation and Inspections Group – 86-68360
DeWayne Campbell dcampbell@usbr.gov – 303-445-3052
 Diane Lowder, Secretary, 303-445-3050

Fax 303-445-6473
 Fax 303-445-6381

Building 67
 Room 1169

Danley, Chris	2755	Osman, Khadija	3062
Danos, Warren	3053	Payne, Terry	3232
Davis, Roy	3055	Popelka, Andrea	2762
Farnes, Brianna	3066	Purto, Gerri	3051
Gagner, Kevin	2746	Schlosser, Eric	3048
Goins, Danny	3057	Schwairy, Ken	3015
Jacobs, Lee	2584	Sharman, Jerry	2749
Jones, Marcia H.	2337	Stateler, Jay	3064
Kayser, Jack	3061	Suggs, John	3065
Kellstadt, Dave	2385	Swanson, Charlie	2757
Kelsic, Rick	3059	Tucker, Anne	3278
Klish, Dave	3060	Weingardt, Dennis	3599
MacDonald, Robert	3404	Young, Wayne	2743
Martin, Gary	3707		
Mogck, Larry	3237		

Infrastructure Services Division – 86-68400
Mark Boyle – Division Chief

Susie Leidholdt, Secretary – 303-445-2828

Telephone	303-445-2828	Building 67
Fax	303-445-6469	Room 700A

Mechanical Equipment Group – 86-68410
Dave Hulse dhulse@usbr.gov – 303-445-2881
 Ruthanne Waltz, Secretary – 303-445-2896

Fax	303-445-6469	Building 67 7 th Floor Southwest
-----	--------------	--

Christensen, Rick	2858	Hurelle, Derek	2857
Cline, Roger	2293	McStraw, Bill	2294
Dawson, Patrick	3758	Reed, Shaun	2873
Egan, Randy	2855	Ritt, Alex	2866
Ell, Jeremy	2860	Schlein, Paul	2868
Enz, Stephanie	3733	Shisler, John	2869
Germann, John	2295	Stephen, Ryan	2867
Hoss, Jeff	2831	Walp, John	2871
Hummel, Terry	3103	Weems, Mike	3617

Hydraulic Equipment Group – 86-668420
Dan Drake ddrake@usbr.gov – 303-445-2874
 Ruthanne Waltz, Secretary – 303-445-2896

Fax	303-445-6469	Building 67 7 th Floor Southwest
-----	--------------	--

Adams, Luke	2861	Quinones, Andres J.	2851
Brooks, John	2878	Read, Don	3102
Converse, Kyle	2859	Schlund, Kent	2884
Durham, Shanna (Korsch)	2876	Smith, Ken	2885
Frisz, Rick	2879	Turnage, Toby	2864
Gulsvig, Michael	2832	Waugh, Jerry	3192
Hoffman, Peter	2880	Zelenka, Bob	2886
Nakamoto, Nathan	3692		

Electrical Design Group – 86-68430
George Girgis ggirgis@usbr.gov – 303-445-2310
 Jackie Horn, Secretary 303-445-2026

Fax	303-445-6420	Building 67 7 th Floor Northwest
-----	--------------	--

Baybayan, Allen	2280	Kelly, John	2822
Berk, Darrell	2269	Liscomb, Darryl	2794
Bradshaw, Jeremiah	2812	Maurer, Cory	2834
Cox, Remeshian (Meesh)	2714	Noi, Richard	2819
Crawford, Doug	2290	Patterson, Jay	2753
Dam, Kim	3633	Podany, Nick	2815
Gamuciello, Lisa	2835	Rossi, Larry	2820
Griess, Todd	2811	Schuh, Mike	2821
Heckler, Bill	2833	Vaughn, Eric	2816
Katers, Andrew	2842	Vu, Henry	2837

Infrastructure Services Division – 86-68400 (continued)

Hydropower Technical Services Group – 86-68440

Jim Zeiger jzeiger@usbr.gov – 303-445-2850

Angie McCaslin, Secretary 303-445-2300

Fax 303-445-6432

Building 56
Room 2730

Agee, J. C.	2309	Myers, Nathan	2643
Cawthorne, Gary	2817	Patterson, Shawn	2311
Clair, Kyle	2813	Rougely, David	2318
Coberly, Steven	3291	Schmidt, Jason	2843
DeHaan, Jim	2305	Sewell, Jim	3063
Eastment, Eric	2324	Stenberg, Jeffrey	2321
Fabbri, Matthew	2344	Steves, Toby	3258
Few, Benjamin	2304	Tinetti, Paul (Richard)	2325
Gallegos, Lorenzo	2300	Travers, Benjamin	2347
Gonzales, Daniel	2250	Uchiyama, Joe	2845
Grenemyer, Dustin	2299	Voorheis, Pete	2846
Hannigan, Ashley	2838	Vu, Hoa	2312
Hidalgo, Allison	2326	Weeks, Benjamin	2306
Hoang, Vince	2836	Westerdale, Matthew	2313
Holmes, Jill	2307		

Hydraulic Investigations and Laboratory Services Group – 86-68460

Robert Einhellig reinhellig@usbr.gov, – 303-445-2142

Leah Lottes, Secretary –303-445-2180

Phone 303-445-2142

Fax 303-445-6324

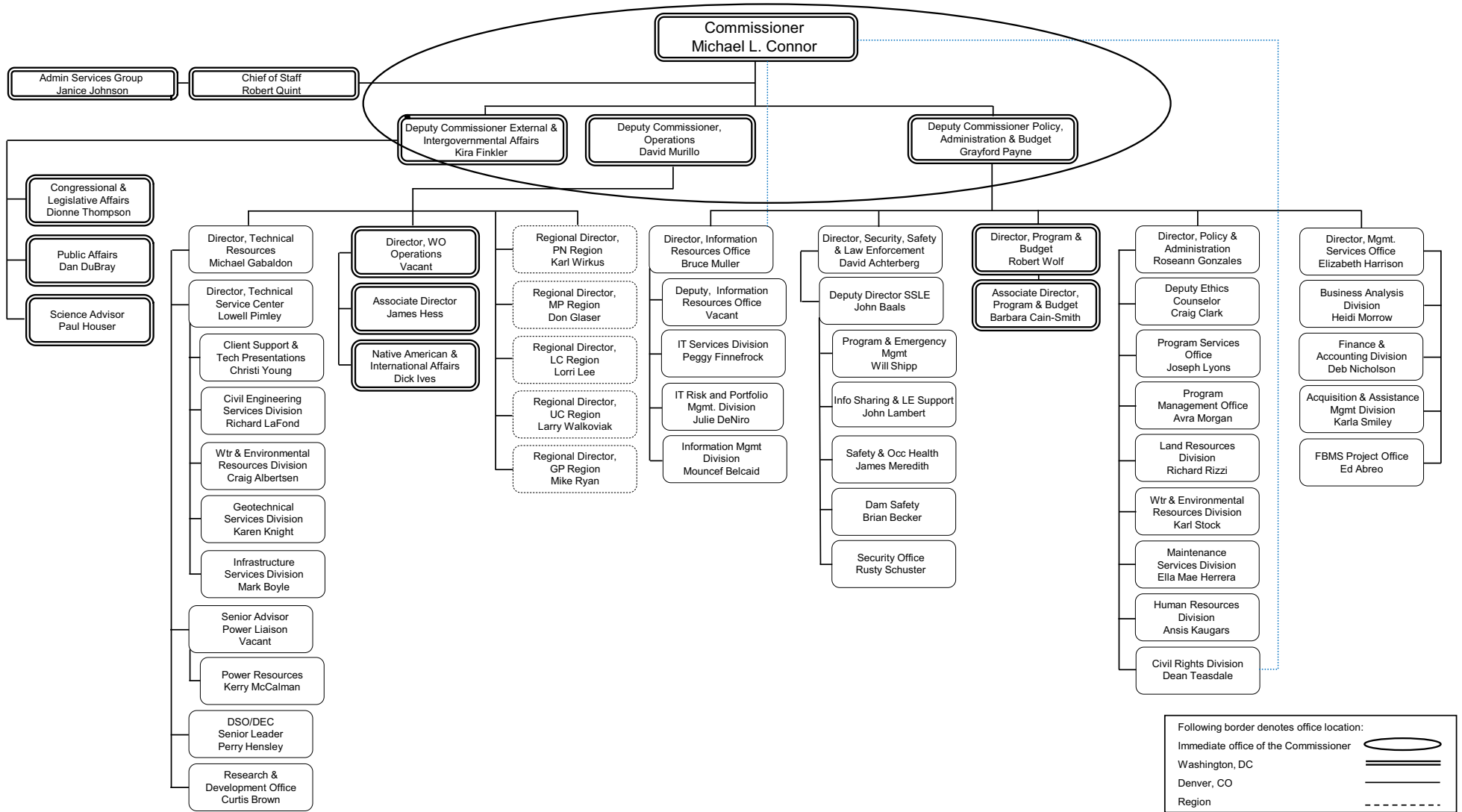
Building 56
Room 1300

Baca, Billy	2331	Higgs, James	2147
Black, Jason*	2166	Kubitschek, Joseph	2148
Campbell, Rudy (contractor)	2159	Lentz, Dale	2143
Cheek, Dane*	2162	Mefford, Brent	2149
Frizell, Warren	2145	Mortensen, Joshua	2156
Gill, Tom	2201	Poos, Marty	2161
Hanna, Leslie	2146	Svoboda, Connie	2152
Hastings, Jimmy	2153	Vermeyen, Tracy	2154
Heiner, Bryan	2140	Wahl, Tony	2155

*Laboratory Shops

Bureau of Reclamation

November 2011



Bureau of Reclamation Technical Service Center

