



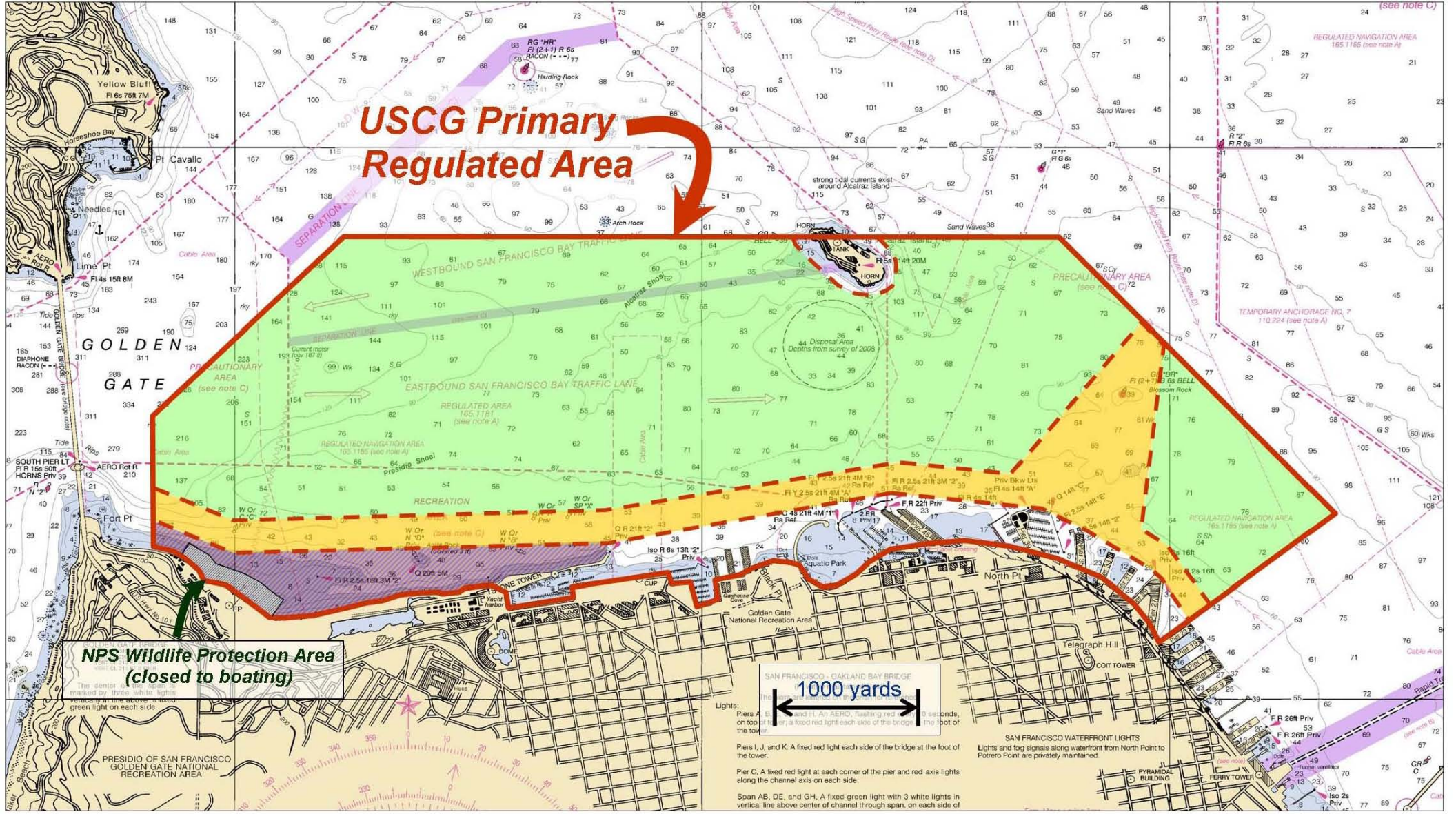
The 34th America's Cup Races

July - September 2013

Primary Race Area

Transit Zone

Non-Motorized Vessels (<20 ft)



USCG Primary Regulated Area

NPS Wildlife Protection Area (closed to boating)

1000 yards

SAN FRANCISCO WATERFRONT LIGHTS

REGULATED NAVIGATION AREA 165.1185 (see note A)
WESTBOUND SAN FRANCISCO BAY TRAFFIC LANE
EASTBOUND SAN FRANCISCO BAY TRAFFIC LANE
RECREATION
SAN FRANCISCO - OAKLAND BAY BRIDGE
Piers A, B, C, and D. A fixed red light at each end of the bridge...
Piers J, J, and K. A fixed red light each side of the bridge at the foot of the tower.
Pier C. A fixed red light at each corner of the pier and red axis lights along the channel axis on each side.
Span AB, DE, and GH. A fixed green light with 3 white lights in vertical line above center of channel through span, on each side of