

# STAFF RECOMMENDATION



NCPC File No. 6037

---

## **BUREAU OF ALCOHOL, TOBACCO, FIREARMS, AND EXPLOSIVES HEADQUARTERS**

Antennas, Flagpole, and Art Panels  
99 New York Avenue, NE, Washington, D.C.

Submitted by the General Services Administration

June 29, 2006

---

### **Abstract**

The General Services Administration has submitted plans for the installation of one flagpole, four art panels, and two antennas at the Bureau of Alcohol, Tobacco, Firearms, and Explosives (ATF) Headquarters Building currently under construction at the intersection of New York and Florida Avenues and O Street, NE, northwest of the New York Avenue Metrorail station. The current submission includes art panels for a blank wall that the Commission excepted from its October 3, 2002 approval of the final site and building plans. The antennas and flagpole submitted herein are additions that were not included as part of the approved design submission. The two satellite dish antennas will be receive-only and will receive television reception to support the ATF mission.

### **Commission Action Requested by Applicant**

Approval of preliminary and final site and building plans pursuant to 40 U.S.C. § 8722(b)(1) and (d).

---

### **Executive Director's Recommendation**

The Commission:

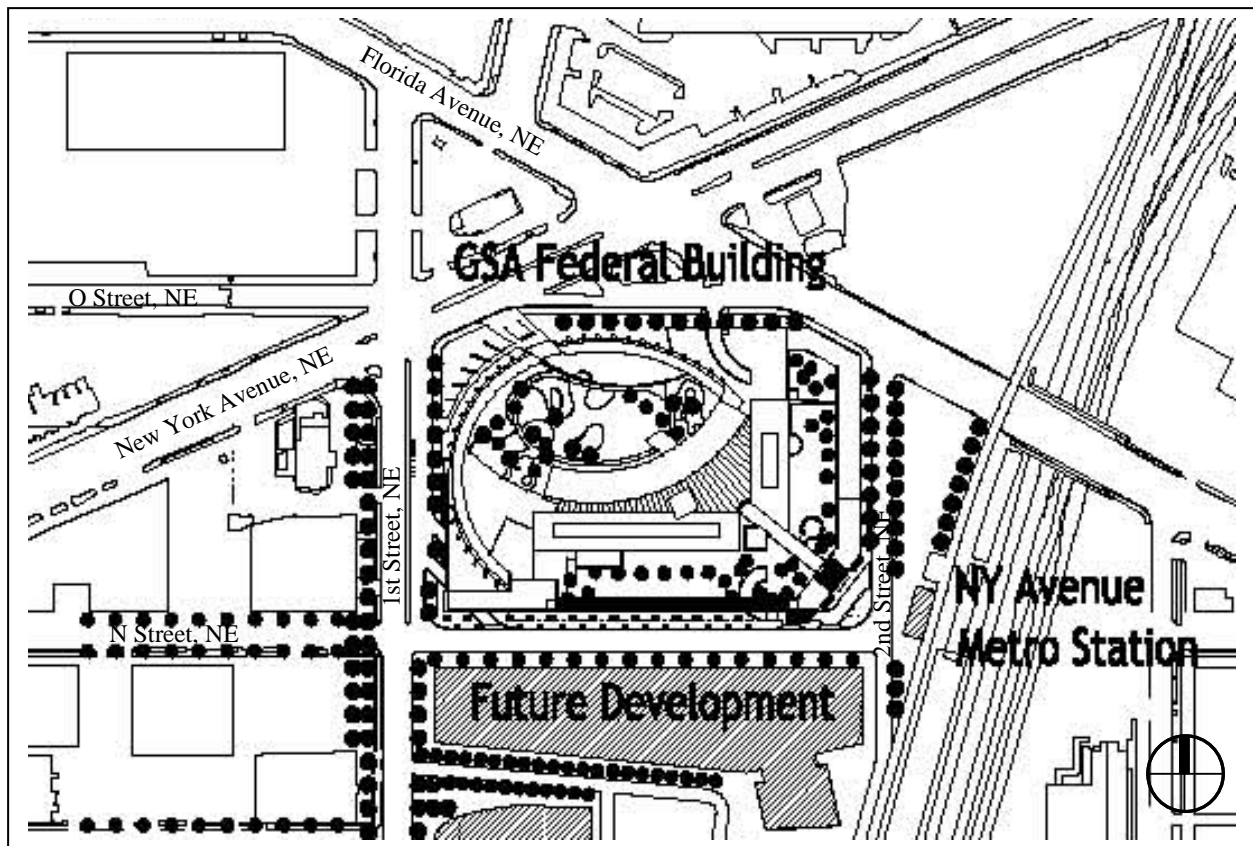
**Approves** the preliminary and final site and building plans for 2 roof-top satellite dish receiving antennas for a period not to exceed ten years, one flagpole at the intersection of New York Avenue and 1<sup>st</sup> Street, NE, and four art panels incorporated in the storefront of the ground floor retail building on 2<sup>nd</sup> Street across from the New York Avenue Metrorail station, for the Bureau of Alcohol, Tobacco, Firearms, and Explosives (ATF) Headquarters Building currently under construction at 99 New York Avenue, NE, in Washington, D.C., as shown on NCPC Map File No. 42.00(38.00)42063.

\* \* \*

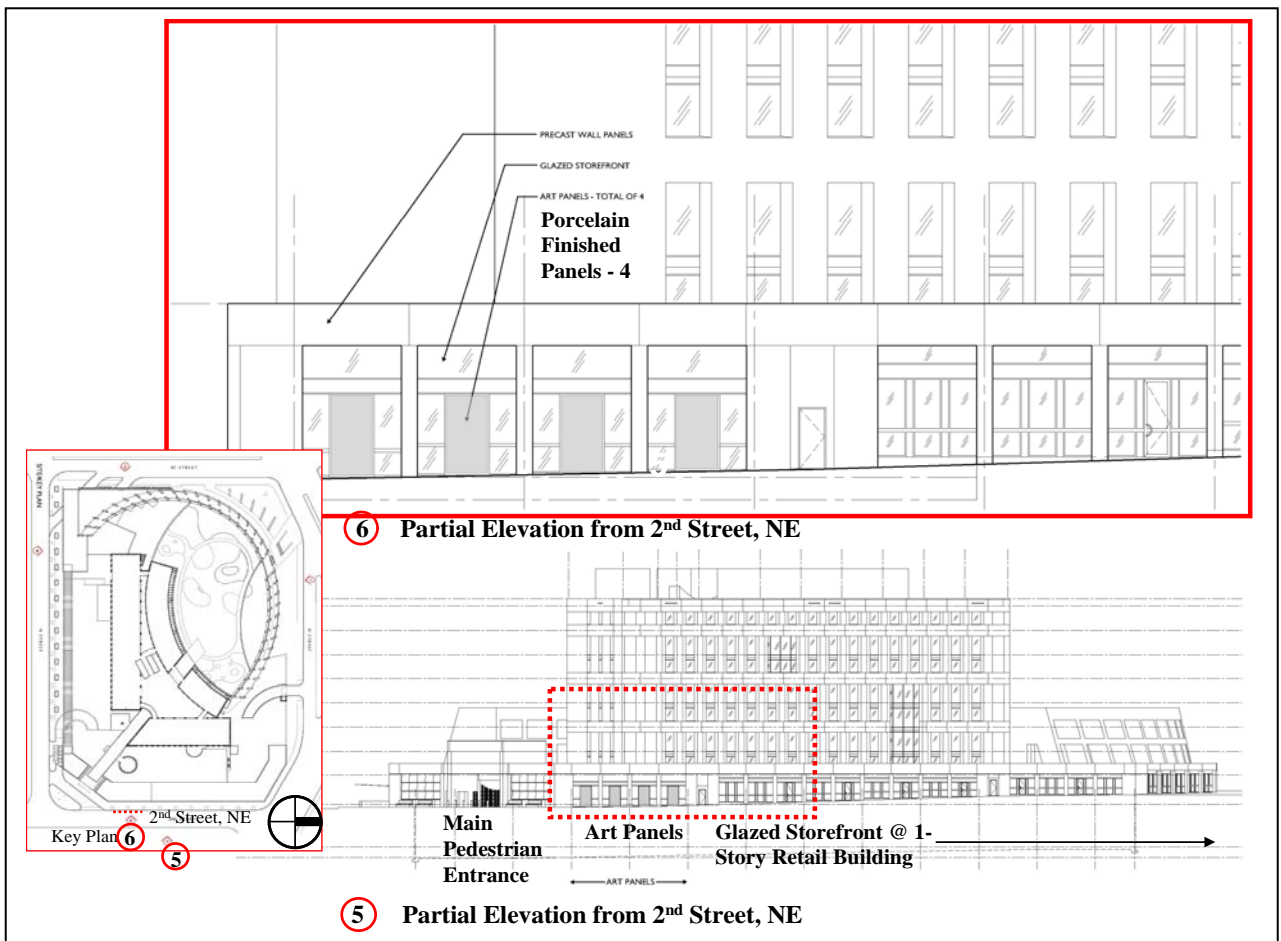
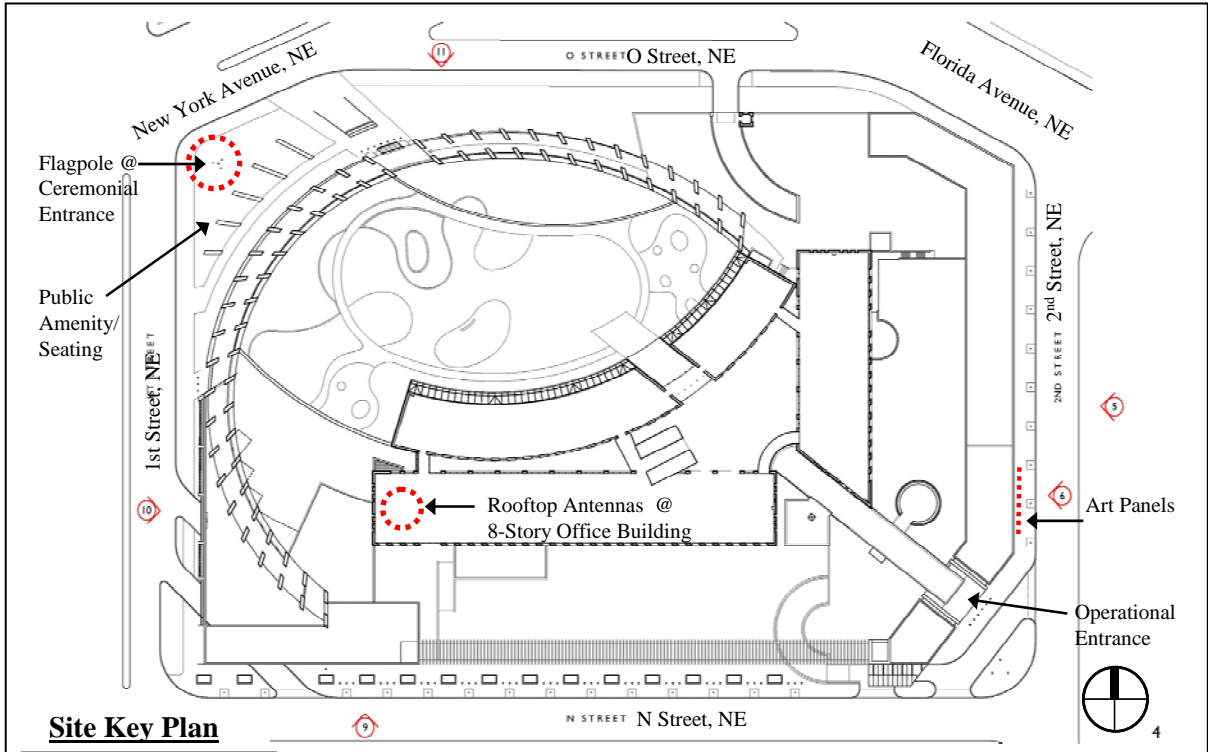
## PROJECT DESCRIPTION

### Site

The Alcohol, Tobacco, Firearms & Explosives Headquarters (HQ) Building is currently under construction at the intersection of New York and Florida Avenues and O Street, NE, which form the New York Avenue gateway to the L'Enfant City. To the west, south and east, the site is bordered by 1st, N, and 2<sup>nd</sup> Streets, NE, and is directly northwest of the New York Avenue Metrorail.

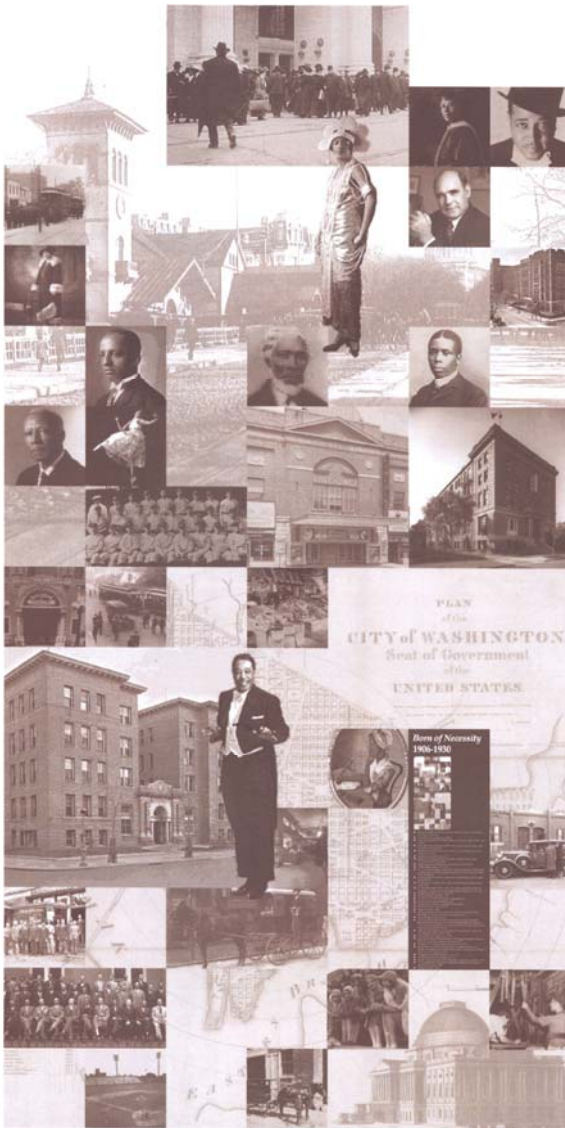


### Site Location

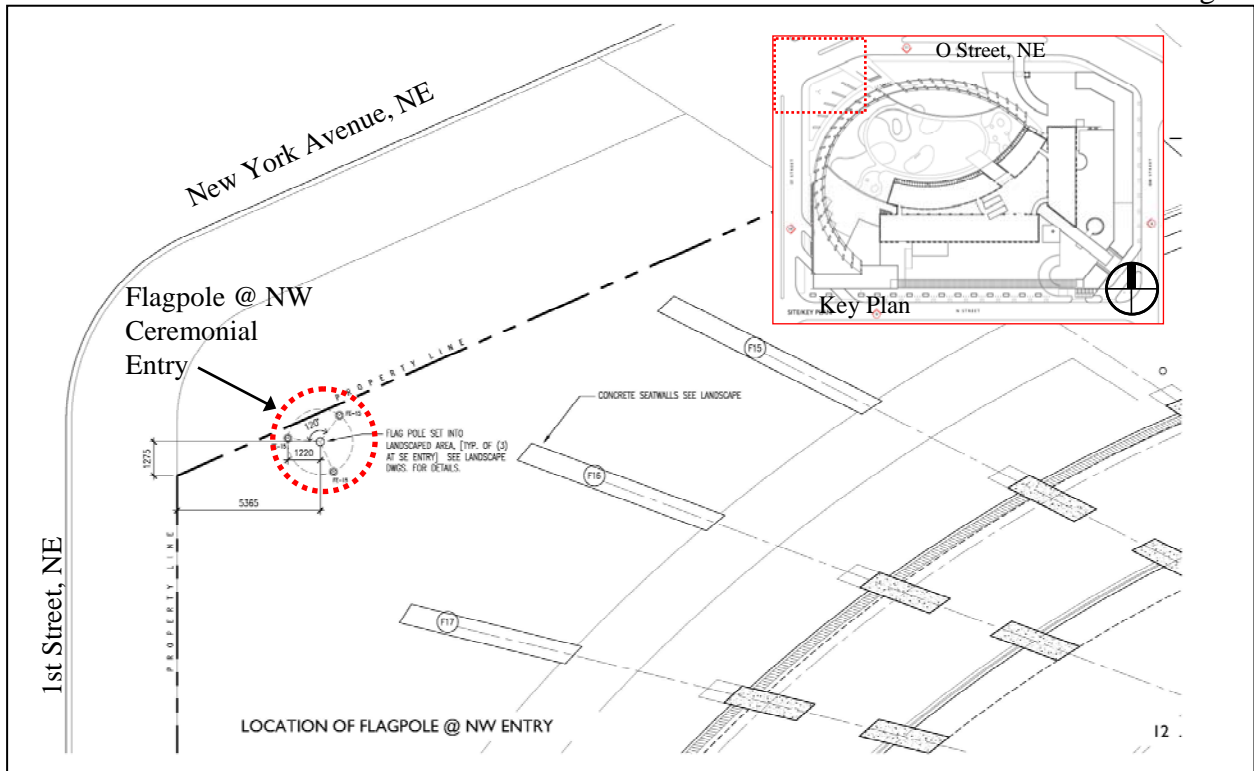


## Art Panels

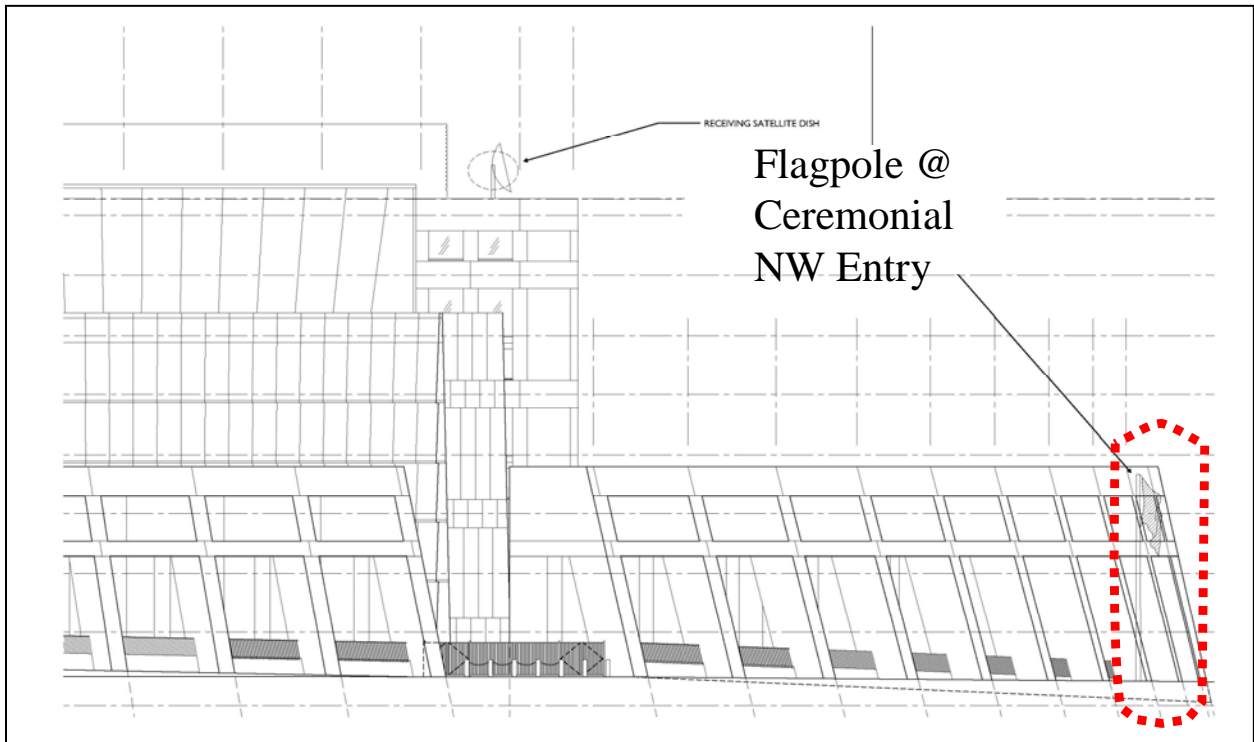
The submittal includes four porcelain-finished art panels to be incorporated into the storefront glazing system of the one-story building with ground floor retail facing 2<sup>nd</sup> Street near its intersection with N Street NE, across from the New York Avenue Metrorail station. The panels will represent a history of the area through the use of photographs, maps and other memorabilia in a collage format. Each panel will illustrate life during a twenty-five year period, from 1906 to 2006. Each 5 x 10-foot panel will be fabricated in three horizontal pieces in a monochromatic palette. The art panel portion of the submittal addresses the design of the blank wall bays at the 2<sup>nd</sup> and N Street intersection which the Commission excepted from its October 2002 approval of final site and building plans, requiring that GSA provide further design refinements.



Panel One;  
Born of Necessity  
1906 - 1930



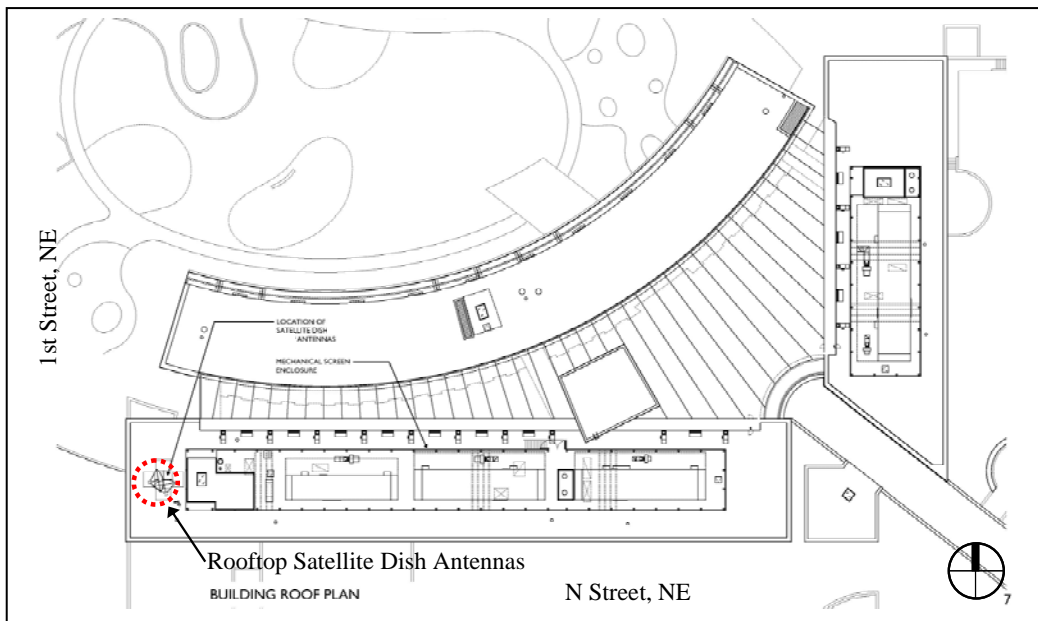
Flagpole Location in Plan



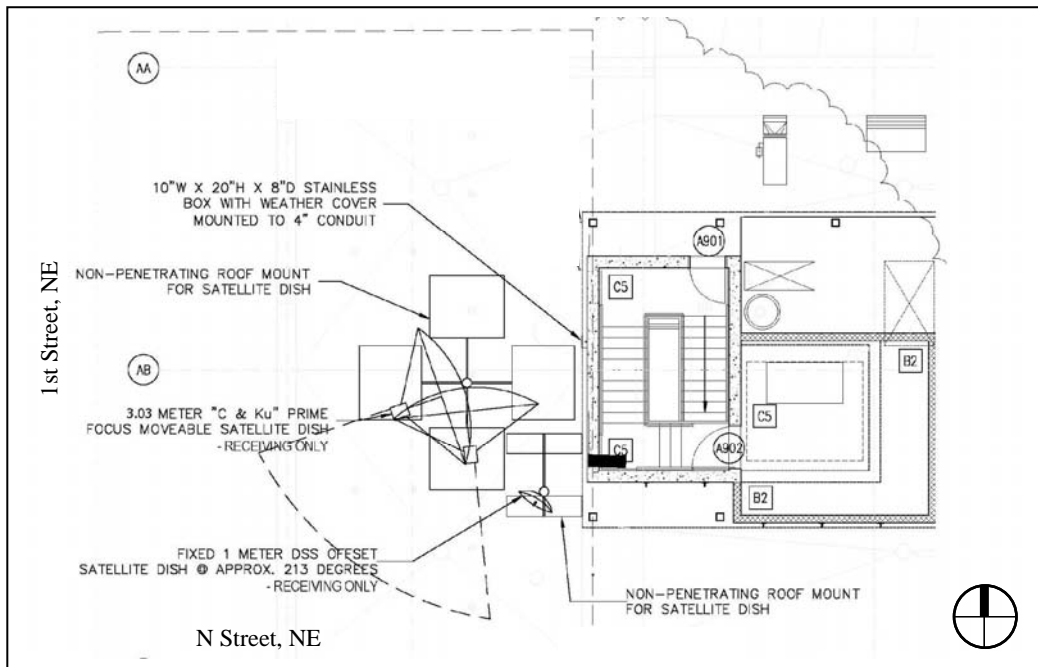
Partial Elevation from O Street

Flagpole

The submittal includes a new forty-foot high flagpole added at the intersection of New York Avenue and 1<sup>st</sup> Street, NE to highlight the building's ceremonial entrance, and to reinforce the building's address as 99 New York Avenue, NE. In the plaza area just north and west of the ceremonial gate will be a public amenity that has incorporated seating into its design which was previously approved. The operational entrance is directly across from the New York Avenue Metrorail station, where three flagpoles were included in the October 2002 approval.



Location of Antennas on Roof Plan

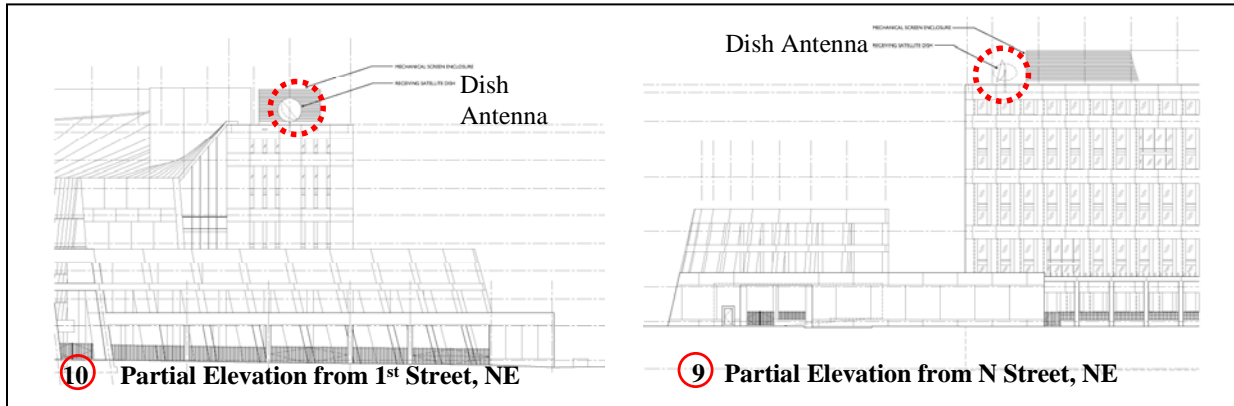


Antenna Plan



## Antennas

The submittal includes two receiving-only satellite dish antennas located on the roof of the 8-story building along N Street at the far western end closest to 1<sup>st</sup> Street, outside of but adjacent to the rooftop mechanical screen enclosures. The prime focus moveable satellite dish will have a diameter of 3.03 meters, and the fixed offset satellite dish will have a diameter of 1 meter. Only the larger dish will be visible from the street level below. Its finish has been designed to match the metallic gray finish at the rooftop mechanical screen enclosure to which they are adjacent. The proposed antenna installation to receive domestic and international television transmissions would support ATF's mission by enabling monitoring of real time events.



## Partial Building Elevations with Satellite Dish Antenna

### PROJECT ANALYSIS

Staff **recommends approval** of the four art panels in the locations described. The historic images of people, activities and places that have defined the surrounding communities offer the past hundred years would contribute to the experience of employees and other pedestrians approaching from the Metro. Staff notes that the photo captions have been integrated within the panels and that each panel will be fabricated in three horizontal pieces seamed together. Staff recommends that the applicant coordinate the placement of panel seams to align with the storefront glazing and mullion system.

Staff **recommends approval** of the new flagpole location at the ceremonial entrance. Even though a visual axis extends through the complex from the southeast entry gateway to the northwest corner of the site, the flag new flag would not be visible from the operational entrance due to its offset placement. Therefore, pedestrians approaching the operational gateway from the Metro would not receive duplicate signals as to where to enter the building.

Staff **recommends approval** of the two satellite dish receiving antennas described. Only the larger dish will be visible from the street level below. To minimize the visual impact of this dish, its finish has been designed to match the metallic gray finish at the rooftop mechanical screen enclosure to which they are adjacent, which is consistent with Section 3 (I.) of NCPC Criteria Applying to Antenna Installation. The applicant has determined that the size of the

larger dish cannot be reduced any further without compromising its effectiveness, making it susceptible to fade and other signal-strength related quality and degradation consequences. The proposal was evaluated in accordance with the Commission's policy set forth in Section 1 of the "Guidelines and Submission Requirements for Antennas on Federal Property in the National Capital Region," approved, January 7, 1988, as amended in August 2001. As the submittal does not include any antennas that transmit but only receive radio signals, the applicant was not required to submit certification that the proposed project conforms to Federal Communications Commission (FCC) and Occupational Health & Safety Administration (OSHA) standards regarding radio frequency emissions. Since the antennas are for government use and outside the monumental core, staff recommends that this approval be granted for ten years.

## CONFORMANCE

### National Environmental Protection Act (NEPA)

In accordance with the National Environmental Policy Act, GSA has determined that this project qualifies as a Categorical Exclusion. NCPC staff has independently reviewed the project information and has determined that the project meets the Commission's requirements for categorical exclusion under §8(C)(2) and (21) of the Commission's Environmental and Historic Preservation Policies and Procedures.

## CONSULTATION

### Coordinating Committee

The Coordinating Committee reviewed and coordinated the proposal at its June 14, 2006 meeting.

### Commission of Fine Arts

The Commission of Fine Arts (CFA) staff reviewed the proposal at its June 15<sup>th</sup> Commission meeting and objected to the additional flagpole location at the ceremonial entrance on the basis of the duplicative nature of this flag with those at the building's operational entrance. However, NCPC staff notes that the flagpole at the ceremonial entrance would not be visible when approaching the building's main entrance from the Metrorail station.





View South across O Street from New York and Florida Avenues, NW