



United States Department of Agriculture
 United States Department of the Interior
 Program Aid No. 1821



EMERGENCY SUPPORT

**SAFEGUARDING AGRICULTURE, ANIMALS,
 AND NATURAL RESOURCES**



ESF 11
 EMERGENCY SUPPORT FUNCTION



ESF 11

EMERGENCY SUPPORT FUNCTION

EMERGENCY SUPPORT FUNCTION (ESF) 11 PROVIDES COORDINATED FEDERAL ASSISTANCE TO STATE, TRIBAL, AND LOCAL GOVERNMENTS WHEN A MAJOR EMERGENCY OR DISASTER OVERWHELMS THEIR ABILITY TO RESPOND TO CERTAIN PUBLIC NEEDS.

ESF 11 is a part of the National Response Framework—the basis for how government agencies provide a unified national response to emergencies and certain private sector and nongovernmental organizations. Under the framework, resources from 39 Federal agencies and certain private sector and nongovernmental organizations are grouped into 15 different “Emergency Support Functions,” or ESFs. The U.S. Department of Agriculture (USDA) and U.S. Department of the Interior (DOI) are the lead Federal departments for ESF 11, which addresses the protection of agriculture and natural resources.

SPECIFICALLY, ESF 11 IS RESPONSIBLE FOR:

- Offering nutrition assistance (FNS)
- Ensuring the safety of the Nation’s supply of meat, poultry, and processed egg products (FSIS)
- Monitoring for and responding to animal/plant pest and disease situations (APHIS)
- Providing for the safety and well-being of household pets (APHIS)
- Protecting natural and cultural resources and historic properties (DOI)



FNS

PROVIDING NUTRITION ASSISTANCE & SAFE FOOD

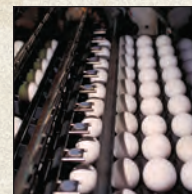


USDA’s Food and Nutrition Service (FNS) works with State agencies to determine disaster-related nutrition assistance needs, obtain appropriate food supplies, and arrange for delivery of these supplies.

FNS ALSO AUTHORIZES the Disaster Supplemental Nutrition Assistance Program, which provides electronic benefit transfer cards for disaster survivors. During the busy 2008 hurricane season, FNS and USDA’s Agricultural Marketing Service and Farm Service Agency worked with local food distributors and vendors to coordinate efforts to ship food products where they were needed—in some cases, within hours of the initial requests for assistance.

FSIS

Another critical part of USDA’s ESF 11 responsibilities is ensuring that the Nation’s supply of meat, poultry, and processed egg products is safe and wholesome, produced in a sanitary environment, and labeled accurately. USDA’s Food Safety and Inspection Service (FSIS) coordinates these efforts through a variety of activities. This includes inspecting and verifying food safety aspects of slaughter and processing plants, products in distribution and retail sites, and import facilities at ports of entry; conducting laboratory analysis of meat, poultry, and processed egg product samples; retaining/detaining products suspected to be adulterated; suspending operations in official regulated facilities when necessary; carrying out foodborne disease surveillance; and conducting field investigations. For example, during the recovery efforts after Hurricane Gustav in August 2008, FSIS inspected import facilities, food warehouses, and regulated facilities in the affected area to ensure that they were still able to maintain a sanitary environment and assure the safety of their meat, poultry, and processed egg products.



SAFEGUARDING AGRICULTURAL HEALTH

As a part of ESF 11, USDA's Animal and Plant Health Inspection Service (APHIS) coordinates any response efforts for incidents involving animal or plant diseases and pests.

APHIS



IN THESE SITUATIONS, APHIS is responsible for coordinating Federal, State, Tribal, and local authorities to conduct disease and/or pest control and eradication activities. APHIS also plays an important supporting role in response efforts involving other ESF 11 responsibilities and ESF groups. For example, when needed, APHIS helps to support ESF 8—Public Health and Medical Services—in addressing animal and veterinary issues during natural disasters.



These roles are consistent with APHIS' traditional mission of safeguarding the health of U.S. animal and plant agricultural resources. Over the years, APHIS has worked with its State and Tribal partners to successfully control and/or eliminate numerous plant and animal health threats in the United States. Such examples include the near eradication of boll weevil from U.S. cotton acreage and, in 2003, the eradication of exotic Newcastle disease, one of the most infectious poultry diseases in the world, in the southwestern United States.



APHIS

HELPING PETS



In 2006, the Pets Evacuation and Transportation Standards (PETS) Act and the Post-Katrina Emergency Management Reform Act were signed into law.



THIS LEGISLATION ALLOWS emergency Federal disaster funding for State and local emergency responders who have considered pet owners, household pets, and service animals in their disaster response plans. Along with several other ESF groups, ESF 11 supports the Federal Emergency Management Agency (FEMA) to ensure an integrated response that provides for the safety and well-being of household pets in an emergency. For example, as part of ESF 11, APHIS provides technical assistance and subject matter expertise on the evacuation and sheltering of household pets. APHIS also supports training and planning activities in these areas.

As seen during the response to Hurricanes Katrina and Rita in 2005, pet evacuation and rescue can become a critical issue in a disaster. In fact, a 2007 Harvard School of Public Health Survey—which covered several States at high risk for hurricanes—found that more than one-fourth of respondents would refuse to evacuate their homes in an emergency if they couldn't take their pets with them. Early planning, good communication, and strong partnerships among Federal, State, and local governments, humane organizations, and animal rescue groups make a tremendous difference in the success of pet evacuation and rescue efforts. In 2008, as part of the Midwest flood response, USDA worked together with State and local responders and organizations and provided veterinary staff to assist with pet rescue and support pet shelters in Iowa and other affected States. In Iowa alone, more than 1,000 pets were sheltered as a result of these cooperative efforts.

PROTECTING NATURAL & CULTURAL RESOURCES



DO I

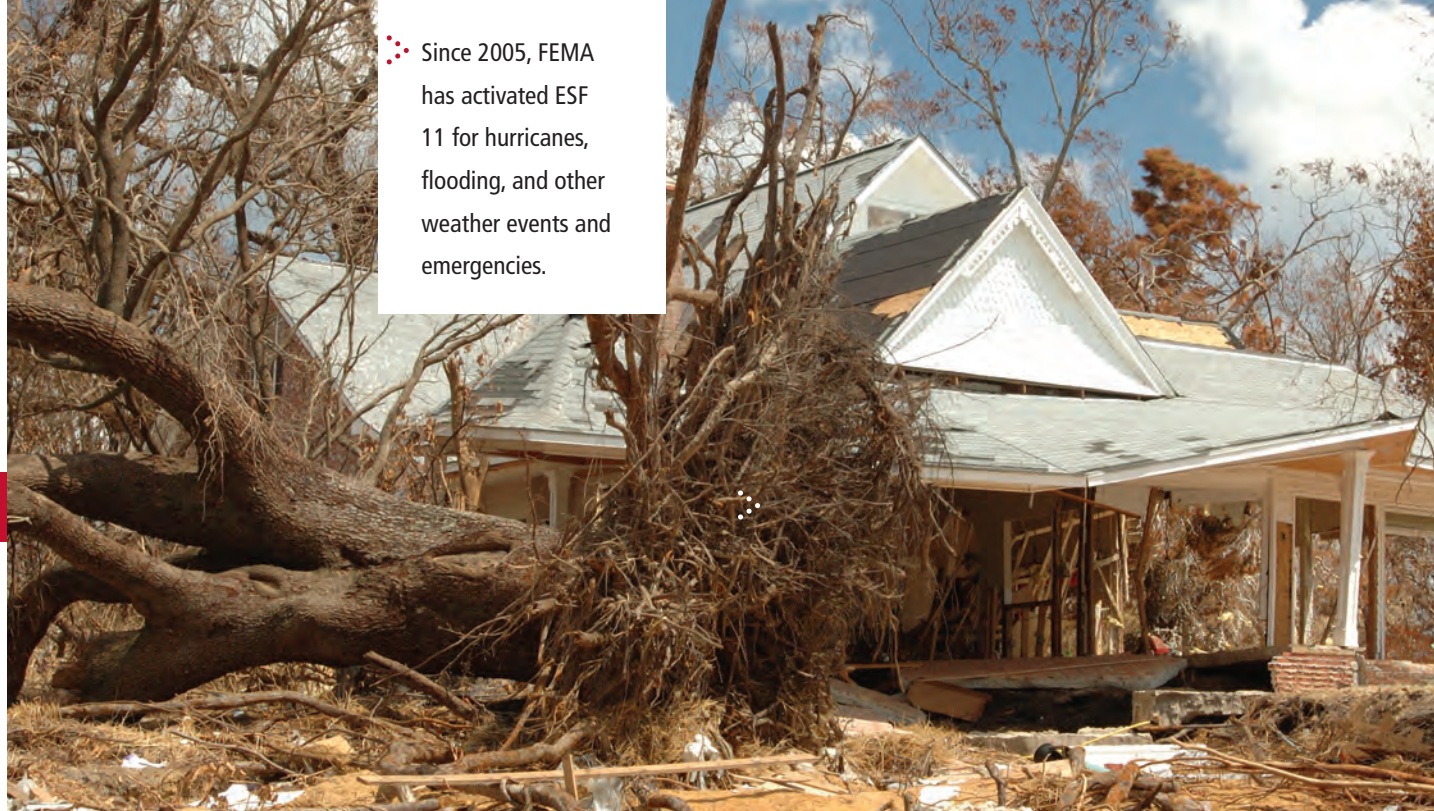
DOI is the primary agency responsible for implementing the natural and cultural resources and historic properties (NCH) part of ESF 11.



Photo by National Center for Preservation Technology and Training, National Park Service

IN THIS ROLE, DOI helps protect, preserve, conserve, rehabilitate, recover, and restore these resources in preparation for or in response to a disaster. This includes performing assessments after a disaster to determine the extent of damage and providing technical assistance and support for assessing the impacts of response and recovery activities to preserve NCH resources.

For example, as part of the ESF 11 response to Hurricane Katrina, DOI assisted the Louisiana State Historic Preservation Officer in developing an integrated geospatial mapping and database of historic resources in the impacted areas. State and Federal officials used the data and maps in making determinations for the preservation or demolition of these resources. As part of the ESF 11 response to Hurricane Ike, DOI assisted FEMA by providing a Fish and Wildlife Service endangered species expert to help determine appropriate debris removal strategies. DOI also provided technical experts for cultural resources to assist in the identification of temporary housing sites and avoid damaging sensitive archaeological resources.



Since 2005, FEMA has activated ESF 11 for hurricanes, flooding, and other weather events and emergencies.

PREPARING FOR THE NEXT EMERGENCY



USDA AND DOI have responded to emergencies by providing safe food to people in need, safeguarding agricultural health across the country, helping pets and pet owners evacuate and find shelter, and protecting NCH resources threatened by disaster.

But the possibility of another natural or manmade disaster is never far away. ESF 11 coordinators across the country continue working with FEMA to ensure that our Nation's emergency response system is ready to handle any type of threat or disaster that comes our way. Each year, ESF 11 coordinators participate in FEMA-led preparedness efforts, including national exercises that test and strengthen emergency response capabilities and regional hurricane conferences that help facilitate a smooth transition from the use of local and State resources to the addition of Federal resources.

In addition, APHIS' Animal Care division is working closely with individual States, local authorities, humane organizations, and animal rescue groups to plan for pet welfare issues in disasters. APHIS is also

cooperating with FEMA/ESF 6 (Mass Care, Emergency Assistance, Housing, and Human Services) to consolidate available resources for the household pet response effort and to clarify roles and responsibilities among Federal, State, local, and nongovernmental emergency responders.

ESF 11 representatives are also expanding their engagement with USDA State Emergency Boards, meeting regularly to stay coordinated. The Boards include USDA emergency program coordinators from each State. During a disaster, they provide leadership at the State/county level and serve as a critical contact for local emergency responders who need USDA resources and guidance. In the future, the goal is to rely on the State Emergency Boards as "one-stop shopping" for USDA resources when ESF 11 is preparing for or responding to an emergency.

Altogether, these efforts help prepare the United States to provide coordinated, uninterrupted public service—at all levels of Government—in the event of any emergency.



FOR MORE INFORMATION

To learn more about ESF 11 and the National Response Framework, visit:

- www.fema.gov/emergency/nrf/
- www.aphis.usda.gov/ESF11

For additional information about USDA, including general USDA disaster assistance, click on "Find Disaster Help."

- www.usda.gov

For information about DOI's NCH protection during emergency response, visit:

- www.doi.gov/oepc/nrtr.html

The U.S. Department of Agriculture (USDA) prohibits discrimination in all its programs and activities on the basis of race, color, national origin, age, disability, and where applicable, sex, marital status, familial status, parental status, religion, sexual orientation, genetic information, political beliefs, reprisal, or because all or part of an individual's income is derived from any public assistance program. (Not all prohibited bases apply to all programs.) Persons with disabilities who require alternative means for communication of program information (Braille, large print, audiotape, etc.) should contact USDA's TARGET Center at (202) 720-2600 (voice and TDD). To file a complaint of discrimination, write to USDA, Director, Office of Civil Rights, 1400 Independence Avenue, S.W., Washington, D.C. 20250-9410, or call (800) 795-3272 (voice) or (202) 720-6382 (TDD). USDA is an equal opportunity provider and employer.