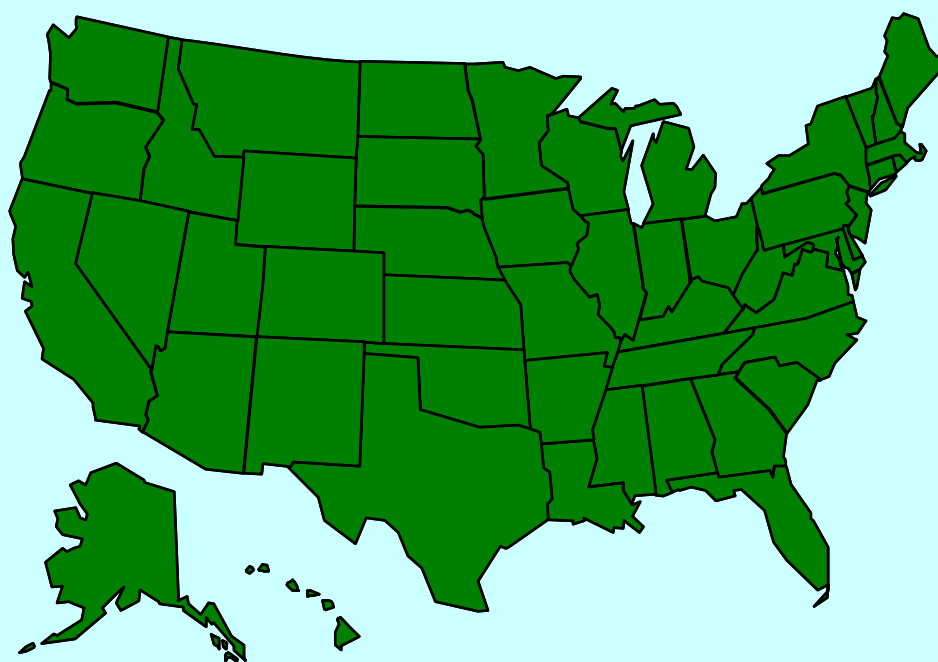


FOOD STAMP PROGRAM STATE ACTIVITY REPORT

Federal Fiscal Year 2005



**Food Stamps
Make America Stronger**



United States Department of Agriculture
Food and Nutrition Service
Program Accountability Division
May 2007

TABLE OF CONTENTS



ITEM	PAGE
Introduction	1
National Summary FY 2004 - 2005	2
State Participation and Issuance.....	3
Administrative Costs.....	10
Fair Hearings.....	20
Fraud Investigations, Prosecutions, and Administrative Disqualification Hearings.....	23
Disqualified Recipients - Federal Database Status.....	34
Recipient Claims.....	36
Impact of Hurricane Katrina.....	46
Rankings of Participation and Issuance.....	51
Comparison to Prior Year.....	58
Multi-Year National Data.....	72
End Notes.....	77

INTRODUCTION

This is a report of State activity in the Food Stamp Program. The data contained herein is State reported data or data calculated from State reported data.

The tables are based on data for all of Fiscal Year 2005. February 2007 was set as the cutoff date for receipt of data for the States through the established reporting channels. It should be noted that the FNS-366B data is reported by State fiscal year, which varies among the States.

As may be expected in a report of this size and taken from multiple data sources, there are some apparent discrepancies in reported data. Most discrepancies are due to compiling the data at different times and from different data sources within the State. In some cases, the data may still be revised.

To assist the reader, we have included End Notes at the conclusion of the report identifying the data sources and other pertinent information for each individual section. All data, with two exceptions, was compiled from the National Data Bank, the official repository of Food Stamp Program data. The report, itself, was prepared by the Program Accountability Division

We have again included a recipient claims table that reports on the methods used by State agencies to collect claims against recipient households. Some of the data included in the recipient claims table is derived from administrative offset weekly statistical reports prepared by the U. S. Department of the Treasury.

We have also included data on disqualified recipients from our Disqualified Recipient Subsystem, a Federal database that provides information on disqualified recipients to State agencies. In addition, a "Rankings" section again has been included in the report. That section contains tables that rank participation and issuance data, from high to low, for each State for FY 2005.

In FY 2005 Hurricane Katrina had a significant impact on program participation and benefits as States stepped up to assist Hurricane Katrina victims. This year we have included a special section on the FSP response to Hurricane Katrina.

We also wish to point out that selected program statistical data is available on the Food Stamp Program web page at:

www.fns.usda.gov/fsp.

If there are any questions concerning the data in this publication, contact either John Bedwell at (703) 305-2397 or Karen Peko at (703) 305-2481 or e-mail us at our website address

PADMAILBOX@fns.usda.gov

or write us at:

**Food and Nutrition Service
Food Stamp Program
Program Accountability Division, Room 816
3101 Park Center Drive
Alexandria, VA 22302**



**FOOD STAMP PROGRAM ACTIVITY - FY 2004 - 2005
NATIONAL SUMMARY**



<u>ACTIVITY</u>	FY 2004	FY 2005	PERCENT CHANGE
<u>PARTICIPATION AND ISSUANCE</u>			
PERSONS (MONTHLY) (IN MIL)	23.9	25.7	7.80%
HOUSEHOLDS (MONTHLY) (IN MIL)	10.3	11.2	8.94%
ISSUANCE (IN MIL \$)	\$24,618.9	\$28,565.7	16.03%
AVG MONTHLY BENEFIT PER PERSON	\$85.99	\$92.56	7.64%
AVG MONTHLY BENEFIT PER HOUSEHOLD	\$199.60	\$212.59	6.51%
<u>ISSUANCE (AS PERCENT OF TOTAL ISSUANCE)</u>			
EBT	98.54%	99.81%	
COUPONS	1.26%	0.00%	
CASH-OUT	0.20%	0.18%	
<u>STATE ADMINISTRATIVE COSTS (IN MIL \$)</u>			
TOTAL COSTS	\$5,112.1	\$5,206.3	1.84%
FED SHARE OF CERTIFICATION	\$1,315.6	\$1,328.2	0.96%
FED SHARE OF ISSUANCE ACTIVITY	\$180.6	\$178.5	-1.14%
FED SHARE OF FRAUD CONTROL	\$106.3	\$109.0	2.58%
FED SHARE OF TOTAL	\$2,418.5	\$2,493.2	3.09%
<u>FAIR HEARINGS</u>			
FAIR HEARING DECISIONS	46,036	47,565	3.32%
<u>FRAUD CONTROL ACTIVITY</u>			
STATE INVESTIGATIONS COMPLETED	745,697	771,796	3.50%
DISQ CONSENT AGREEMENTS	9,615	6,389	-33.55%
STATE PROSECUTIONS COMPLETED	8,764	6,889	-21.39%
FRAUD HEARINGS WAIVED	22,598	19,224	-14.93%
FRAUD HEARINGS COMPLETED	15,595	11,776	-24.49%
TOTAL DISQ DETERMINATIONS	55,094	43,027	-21.90%
<u>RECIPIENT CLAIMS (IN MIL \$)</u>			
FRAUD CLAIMS ESTABLISHED	\$23.2	\$21.4	-7.64%
HSHLD ERROR CLAIMS ESTAB.	\$172.0	\$165.7	-3.65%
AGENCY ERROR CLAIMS ESTAB.	\$48.3	\$72.3	49.69%
TOTAL CLAIMS ESTABLISHED	\$243.4	\$259.4	6.54%
FRAUD CLAIMS COLLECTED	\$58.0	\$57.9	-0.24%
HSHLD ERROR CLAIMS COLLECTED	\$108.5	\$108.6	0.07%
AGENCY ERROR CLAIMS COLLECTED	\$35.3	\$40.3	14.01%
TOTAL CLAIMS COLLECTED	\$201.9	\$206.8	2.42%
FRAUD CLAIMS RECOUPED	\$21.1	\$20.2	-4.45%
HSHLD ERROR CLAIMS RECOUPED	\$58.5	\$52.7	-10.00%
AGENCY ERROR CLAIMS RECOUPED	\$21.8	\$23.9	9.45%
TOTAL CLAIMS RECOUPED	\$101.5	\$96.8	-4.66%
FEDERAL DEBT COLLECTIONS	\$63.2	\$74.4	17.69%

STATE PARTICIPATION AND ISSUANCE



NOTABLE TRENDS

Participation and Issuance

In fiscal year (FY) 2005, State agencies issued approximately \$28.6 billion in food stamp benefits to a monthly average 11.2 million households or 25.7 million people participating in the Food Stamp Program (FSP). The average monthly benefit was \$92.56 per person or \$212.59 per household. The Federal Government pays 100 percent of the benefits. In FY 2005, participation increased 7.8% percent from 23.9 million people the previous year, and issuance increased 16.03% percent from \$24.6 billion in FY 2004 to \$28.6 billion in FY 2005. All 53 State agencies had an increase in participation in FY 2005.

Electronic Benefit Systems

The Personal Responsibility and Work Opportunity Act of 1996 mandates that all States must convert from paper coupon systems to an electronic benefit transfer (EBT) system before October 1, 2002. EBT systems issue and redeem benefits using cards, electronic funds transfer networks, and point-of-sale technology in authorized retail food stores. In FY 2004, the Food Stamp Program converted 100 percent to EBT in all State agencies, including U.S. Territories and the District of Columbia. Specifically, 48 States, the District of Columbia, Virgin Islands and Guam have online food stamp EBT systems and two States have offline food stamp EBT systems. As a result, in FY 2005 \$28.5 billion was issued in electronic benefits to a monthly average 11.2 million households. At the end of the fiscal year, 99.4 percent of households were on EBT

Food Coupons

In FY 2005 coupons were no longer being issued as the standard form of issuance in any State. However, in FY 2005 Wyoming was converting unspent EBT benefits to coupons when a household moved out of State. These converted benefits in Wyoming are shown in the coupon issuance dollars

On occasion, previously issued but unspent coupons are found and turned in to the State agency. These coupon returns are shown in the report as negative coupon issuance dollars.

Cash-out

Cash-out projects are limited to certain pilot projects authorized in the Food Stamp Act that either have continued to operate since 1981 or that were approved prior to August 1996. While technically not considered part of the EBT system for issuance, redemption, and reporting purposes, States with FNS-approved cash-out issuance systems (for wage supplementation, welfare reform, or other approved demonstration projects) may issue cash-out benefits electronically, in place of paper checks. Cash-out benefits may be issued electronically via either direct deposit or debit cards, which can be used at automatic teller machines to draw the funds. In FY 2005, \$51.7 million in cash-out benefits were issued to 62,379 households in 7 States. Cash-out represented less than 0.2 percent of issuance.

Demonstration Projects

- In FY 2005, FNS tested in two States (Connecticut and North Carolina) a demonstration project in which elderly households could choose to receive a food package rather than the standard benefit.
- In FY 2005, Minnesota operated an approved Group Residential Housing project that provided FSP benefits to be used to purchase food for the residents.



TABLE 1: Food Stamp Program Participation and Issuance - FY 2005

STATE	Persons Participating (Monthly)	Households Participating (Monthly)	Issuance
Connecticut	204,146	107,492	\$223,198,180
Maine	152,910	78,170	\$162,202,784
Massachusetts	368,122	176,121	\$363,033,709
New Hampshire	52,310	25,198	\$50,569,118
New York	1,754,861	915,703	\$2,135,869,438
Rhode Island	76,085	34,751	\$78,517,688
Vermont	45,218	22,355	\$44,999,412
Delaware	61,586	26,052	\$65,229,058
District of Columbia	88,799	44,362	\$103,295,526
Maryland	288,943	131,556	\$320,133,493
New Jersey	392,416	186,661	\$437,423,008
Pennsylvania	1,042,809	471,960	\$1,104,711,263
Virgin Islands	13,550	4,633	\$20,817,269
Virginia	488,481	214,983	\$499,708,150
West Virginia	262,442	114,038	\$258,050,316
Alabama	558,596	222,132	\$616,090,009
Florida	1,381,804	657,576	\$1,597,912,047
Georgia	921,427	375,739	\$1,047,842,395
Kentucky	570,277	245,707	\$611,490,522
Mississippi	434,958	174,500	\$462,961,820
North Carolina	799,747	343,397	\$856,161,978
South Carolina	521,125	219,503	\$565,811,046
Tennessee	849,703	374,011	\$941,638,149
Illinois	1,158,271	520,350	\$1,400,091,866
Indiana	556,285	240,045	\$626,608,340
Michigan	1,047,594	469,976	\$1,098,817,352
Minnesota	259,937	124,398	\$274,996,874
Ohio	1,007,172	448,524	\$1,155,257,476
Wisconsin	345,748	143,459	\$316,951,818
Arkansas	373,752	152,909	\$401,286,262
Louisiana	807,896	318,126	\$978,765,504
New Mexico	240,637	93,094	\$251,414,424
Oklahoma	424,402	172,837	\$439,598,807
Texas	2,441,975	941,050	\$2,659,288,088
Colorado	245,926	107,405	\$313,224,564
Iowa	206,696	89,655	\$219,761,007
Kansas	177,782	78,165	\$179,999,844
Missouri	766,425	298,380	\$735,757,569
Montana	80,870	34,573	\$89,231,197
Nebraska	117,415	49,948	\$119,523,412
North Dakota	42,204	18,927	\$44,674,426
South Dakota	56,095	22,483	\$61,477,144
Utah	133,263	53,162	\$141,217,600
Wyoming	25,482	10,422	\$26,976,298
Alaska	55,567	20,224	\$80,405,244
Arizona	550,291	220,498	\$633,808,912
California	1,992,024	785,682	\$2,312,527,278
Guam	27,277	8,066	\$53,633,228
Hawaii	93,548	47,309	\$155,898,096
Idaho	93,441	37,151	\$102,970,484
Nevada	121,707	54,877	\$128,901,489
Oregon	429,358	218,297	\$455,943,437
Washington	508,472	250,788	\$539,048,283
US	25,717,830	11,197,377	\$28,565,722,701

TABLE 2: Food Stamp Program Average Monthly Benefit - FY 2005

STATE	Average Monthly Benefit Per Person	Average Monthly Benefit Per Household
Connecticut	\$91.11	\$173.03
Maine	\$88.40	\$172.92
Massachusetts	\$82.18	\$171.77
New Hampshire	\$80.56	\$167.24
New York	\$101.43	\$194.37
Rhode Island	\$86.00	\$188.28
Vermont	\$82.93	\$167.74
Delaware	\$88.26	\$208.65
District of Columbia	\$96.94	\$194.04
Maryland	\$92.33	\$202.79
New Jersey	\$92.89	\$195.28
Pennsylvania	\$88.28	\$195.06
Virgin Islands	\$128.03	\$374.42
Virginia	\$85.25	\$193.70
West Virginia	\$81.94	\$188.57
Alabama	\$91.91	\$231.13
Florida	\$96.37	\$202.50
Georgia	\$94.77	\$232.40
Kentucky	\$89.36	\$207.39
Mississippi	\$88.70	\$221.09
North Carolina	\$89.21	\$207.77
South Carolina	\$90.48	\$214.81
Tennessee	\$92.35	\$209.81
Illinois	\$100.73	\$224.22
Indiana	\$93.87	\$217.53
Michigan	\$87.41	\$194.84
Minnesota	\$88.16	\$184.22
Ohio	\$95.59	\$214.64
Wisconsin	\$76.39	\$184.11
Arkansas	\$89.47	\$218.70
Louisiana	\$100.96	\$256.39
New Mexico	\$87.07	\$225.05
Oklahoma	\$86.32	\$211.95
Texas	\$90.75	\$235.49
Colorado	\$106.14	\$243.02
Iowa	\$88.60	\$204.27
Kansas	\$84.37	\$191.90
Missouri	\$80.00	\$205.49
Montana	\$91.95	\$215.08
Nebraska	\$84.83	\$199.41
North Dakota	\$88.21	\$196.70
South Dakota	\$91.33	\$227.87
Utah	\$88.31	\$221.37
Wyoming	\$88.22	\$215.69
Alaska	\$120.58	\$331.31
Arizona	\$95.98	\$239.54
California	\$96.74	\$245.28
Guam	\$163.85	\$554.14
Hawaii	\$138.88	\$274.61
Idaho	\$91.83	\$230.98
Nevada	\$88.26	\$195.74
Oregon	\$88.49	\$174.05
Washington	\$88.34	\$179.12
US	\$92.56	\$212.59

TABLE 3: Food Stamp Program Participation By Benefit Type - Persons - FY 2005

	Persons Receiving Cash (Monthly Average)	Persons Receiving EBT (Monthly Average)	Persons Receiving Other (Monthly Average)	Persons Receiving Food Coupons (Monthly Average)	Total Persons
STATE					
Connecticut	0	204,135	126	0	204,146
Maine	0	152,910	0	0	152,910
Massachusetts	1	368,122	0	0	368,122
New Hampshire	0	52,310	0	0	52,310
New York	0	1,754,861	0	0	1,754,861
Rhode Island	0	76,085	0	0	76,085
Vermont	7,860	37,358	0	0	45,218
Delaware	0	61,586	0	0	61,586
District of Columbi	0	88,799	0	0	88,799
Maryland	0	288,943	0	0	288,943
New Jersey	0	392,416	0	0	392,416
Pennsylvania	0	1,042,809	0	0	1,042,809
Virgin Islands	0	13,550	0	0	13,550
Virginia	0	488,481	0	0	488,481
West Virginia	0	262,442	0	0	262,442
Alabama	0	558,596	0	0	558,596
Florida	0	1,381,804	0	0	1,381,804
Georgia	0	921,427	0	0	921,427
Kentucky	0	570,277	0	0	570,277
Mississippi	0	434,958	0	0	434,958
North Carolina	0	799,488	259	0	799,747
South Carolina	0	521,125	0	0	521,125
Tennessee	0	849,703	0	0	849,703
Illinois	0	1,158,271	0	0	1,158,271
Indiana	0	556,285	0	0	556,285
Michigan	0	1,047,594	0	0	1,047,594
Minnesota	13,894	242,342	3,701	0	259,937
Ohio	25,685	981,488	0	0	1,007,172
Wisconsin	0	345,748	0	0	345,748
Arkansas	0	373,752	0	0	373,752
Louisiana	0	807,896	0	0	807,896
New Mexico	0	240,637	0	0	240,637
Oklahoma	0	424,402	0	0	424,402
Texas	0	2,441,975	0	0	2,441,975
Colorado	0	245,926	0	0	245,926
Iowa	0	206,696	0	0	206,696
Kansas	0	177,782	0	0	177,782
Missouri	0	766,425	0	0	766,425
Montana	0	80,870	0	0	80,870
Nebraska	0	117,415	0	0	117,415
North Dakota	0	42,204	0	0	42,204
South Dakota	0	56,095	0	0	56,095
Utah	3,554	129,708	0	0	133,263
Wyoming	0	25,481	0	0	25,482
Alaska	0	55,567	0	0	55,567
Arizona	1	550,291	0	0	550,291
California	0	1,992,024	0	0	1,992,024
Guam	0	27,277	0	0	27,277
Hawaii	0	93,548	0	0	93,548
Idaho	0	93,441	0	0	93,441
Nevada	0	121,707	0	0	121,707
Oregon	17,822	411,536	0	0	429,358
Washington	0	508,472	0	0	508,472
US	68,816	25,645,043	3,971	0	25,717,830

Note: Participation by Other includes Food Packages and Group Housing.

TABLE 4: Food Stamp Program Participation By Benefit Type - Households - FY 2005

STATE	Households Receiving Cash (Monthly Average)	Households Receiving EBT (Monthly Average)	Households Receiving Other (Monthly Average)	Households Receiving Food Coupons (Monthly Average)	Total Households
Connecticut	0	107,481	123	0	107,492
Maine	0	78,170	0	0	78,170
Massachusetts	0	176,120	0	0	176,121
New Hampshire	0	25,198	0	0	25,198
New York	0	915,703	0	0	915,703
Rhode Island	0	34,751	0	0	34,751
Vermont	7,278	15,077	0	0	22,355
Delaware	0	26,052	0	0	26,052
District of Columbi	0	44,362	0	0	44,362
Maryland	0	131,556	0	0	131,556
New Jersey	0	186,661	0	0	186,661
Pennsylvania	0	471,960	0	0	471,960
Virgin Islands	0	4,633	0	0	4,633
Virginia	0	214,983	0	0	214,983
West Virginia	0	114,038	0	0	114,038
Alabama	0	222,132	0	0	222,132
Florida	0	657,576	0	0	657,576
Georgia	0	375,739	0	0	375,739
Kentucky	0	245,707	0	0	245,707
Mississippi	0	174,500	0	0	174,500
North Carolina	0	343,156	241	0	343,397
South Carolina	0	219,503	0	0	219,503
Tennessee	0	374,011	0	0	374,011
Illinois	0	520,350	0	0	520,350
Indiana	0	240,045	0	0	240,045
Michigan	0	469,976	0	0	469,976
Minnesota	11,353	109,344	3,701	0	124,398
Ohio	24,074	424,450	0	0	448,524
Wisconsin	0	143,459	0	0	143,459
Arkansas	0	152,909	0	0	152,909
Louisiana	0	318,126	0	0	318,126
New Mexico	0	93,094	0	0	93,094
Oklahoma	0	172,837	0	0	172,837
Texas	0	941,050	0	0	941,050
Colorado	0	107,405	0	0	107,405
Iowa	0	89,655	0	0	89,655
Kansas	0	78,165	0	0	78,165
Missouri	0	298,380	0	0	298,380
Montana	0	34,573	0	0	34,573
Nebraska	0	49,948	0	0	49,948
North Dakota	0	18,927	0	0	18,927
South Dakota	0	22,483	0	0	22,483
Utah	3,356	49,806	0	0	53,162
Wyoming	0	10,422	0	0	10,422
Alaska	0	20,224	0	0	20,224
Arizona	0	220,498	0	0	220,498
California	0	785,682	0	0	785,682
Guam	0	8,066	0	0	8,066
Hawaii	0	47,309	0	0	47,309
Idaho	0	37,151	0	0	37,151
Nevada	0	54,877	0	0	54,877
Oregon	16,319	201,978	0	0	218,297
Washington	0	250,788	0	0	250,788
US	62,379	11,131,045	3,953	0	11,197,377

Note: Participation by Other includes Food Packages and Group Housing.

TABLE 5: Food Stamp Program Issuance By Benefit Type - FY 2005

	Issuance By Cash	Issuance By EBT	Issuance By Other	Issuance By Food Coupons	Total
STATE					
Connecticut	\$0	\$223,192,246	\$5,934	\$0	\$223,198,180
Maine	\$0	\$162,204,338	\$0	(\$1,554)	\$162,202,784
Massachusetts	\$822	\$363,032,887	\$0	\$0	\$363,033,709
New Hampshire	\$0	\$50,569,118	\$0	\$0	\$50,569,118
New York	\$0	\$2,135,869,438	\$0	\$0	\$2,135,869,438
Rhode Island	\$0	\$78,517,688	\$0	\$0	\$78,517,688
Vermont	\$7,235,242	\$37,764,170	\$0	\$0	\$44,999,412
Delaware	\$0	\$65,229,058	\$0	\$0	\$65,229,058
District of Columbi	\$0	\$103,295,526	\$0	\$0	\$103,295,526
Maryland	\$0	\$320,133,493	\$0	\$0	\$320,133,493
New Jersey	\$0	\$437,423,008	\$0	\$0	\$437,423,008
Pennsylvania	\$0	\$1,104,711,263	\$0	\$0	\$1,104,711,263
Virgin Islands	\$0	\$20,817,269	\$0	\$0	\$20,817,269
Virginia	\$0	\$499,708,150	\$0	\$0	\$499,708,150
West Virginia	\$0	\$258,050,740	\$0	(\$424)	\$258,050,316
Alabama	\$0	\$616,090,009	\$0	\$0	\$616,090,009
Florida	\$0	\$1,597,912,047	\$0	\$0	\$1,597,912,047
Georgia	\$0	\$1,047,842,395	\$0	\$0	\$1,047,842,395
Kentucky	\$0	\$611,490,522	\$0	\$0	\$611,490,522
Mississippi	\$0	\$462,961,820	\$0	\$0	\$462,961,820
North Carolina	\$0	\$856,050,804	\$111,174	\$0	\$856,161,978
South Carolina	\$0	\$565,811,046	\$0	\$0	\$565,811,046
Tennessee	\$0	\$941,638,149	\$0	\$0	\$941,638,149
Illinois	\$0	\$1,400,091,866	\$0	\$0	\$1,400,091,866
Indiana	\$0	\$626,608,340	\$0	\$0	\$626,608,340
Michigan	\$0	\$1,098,817,352	\$0	\$0	\$1,098,817,352
Minnesota	\$7,197,729	\$264,269,607	\$3,529,538	\$0	\$274,996,874
Ohio	\$18,659,788	\$1,136,597,688	\$0	\$0	\$1,155,257,476
Wisconsin	\$0	\$316,951,818	\$0	\$0	\$316,951,818
Arkansas	\$0	\$401,286,262	\$0	\$0	\$401,286,262
Louisiana	\$0	\$978,765,504	\$0	\$0	\$978,765,504
New Mexico	\$0	\$251,414,424	\$0	\$0	\$251,414,424
Oklahoma	\$0	\$439,598,807	\$0	\$0	\$439,598,807
Texas	\$0	\$2,659,288,088	\$0	\$0	\$2,659,288,088
Colorado	\$0	\$313,224,564	\$0	\$0	\$313,224,564
Iowa	\$0	\$219,761,007	\$0	\$0	\$219,761,007
Kansas	\$0	\$179,999,844	\$0	\$0	\$179,999,844
Missouri	\$0	\$735,757,569	\$0	\$0	\$735,757,569
Montana	\$0	\$89,231,197	\$0	\$0	\$89,231,197
Nebraska	\$0	\$119,523,412	\$0	\$0	\$119,523,412
North Dakota	\$0	\$44,674,426	\$0	\$0	\$44,674,426
South Dakota	\$0	\$61,477,144	\$0	\$0	\$61,477,144
Utah	\$2,329,051	\$138,888,549	\$0	\$0	\$141,217,600
Wyoming	\$0	\$26,963,685	\$0	\$12,613	\$26,976,298
Alaska	\$0	\$80,405,244	\$0	\$0	\$80,405,244
Arizona	\$754	\$633,808,198	\$0	(\$40)	\$633,808,912
California	\$0	\$2,312,527,872	\$0	(\$594)	\$2,312,527,278
Guam	\$0	\$53,633,228	\$0	\$0	\$53,633,228
Hawaii	\$0	\$155,898,096	\$0	\$0	\$155,898,096
Idaho	\$0	\$102,970,484	\$0	\$0	\$102,970,484
Nevada	\$0	\$128,901,489	\$0	\$0	\$128,901,489
Oregon	\$16,319,123	\$439,624,314	\$0	\$0	\$455,943,437
Washington	\$0	\$539,048,283	\$0	\$0	\$539,048,283
US	\$51,742,509	\$28,510,323,545	\$3,646,646	\$10,001	\$28,565,722,701

ADMINISTRATIVE COSTS



NOTABLE TRENDS

Administrative Costs

State agency administrative costs are affected by a number of factors including participation levels, the number and salary level of State staff, inflation, the location of State agency offices, type of issuance system, worker training costs, degree of automation, level of fraud control activity, etc. The Food and Nutrition Service (FNS) pays approximately 50 percent of State agency administrative costs to operate the program. Total State agency administrative costs prior to Federal cost sharing were \$5.2 billion, up 1.8 percent from \$5.0 billion the previous year. In FY 2005, the Federal share of administrative costs increased 3.1 percent to just over \$2.49 billion.



The Federal share of certification costs increased 0.96 percent in FY 2005 from \$1.31 billion in FY 2004 to \$1.33 billion. The Federal share of the certification cost per case (i.e., per household) per month decreased from \$10.67 per case month to \$9.88 per case month.

TABLE 6: Food Stamp Households - Federal Share of Selected State Administrative Costs - FY 2005

STATE	Federal Share Certification Costs	Federal Share Issuance Costs	Federal Share Fraud Control Costs
Connecticut	\$6,628,834	\$1,151,892	\$1,380,138
Maine	\$4,124,818	\$150,949	\$286,552
Massachusetts	\$25,336,671	\$1,573,000	\$769,459
New Hampshire	\$730,809	\$245,718	\$109,070
New York	\$114,359,185	\$9,940,446	\$23,041,136
Rhode Island	\$2,250,462	\$471,026	\$92,264
Vermont	\$737,487	\$1,196,329	\$59,937
Delaware	\$3,594,000	\$1,027,710	\$719,420
District of Columbia	\$7,441,948	\$796,948	\$294,088
Maryland	\$26,003,970	\$3,258,544	\$346,714
New Jersey	\$45,248,452	\$3,940,639	\$10,650,607
Pennsylvania	\$83,844,820	\$5,330,619	\$4,745,732
Virgin Islands	\$2,285,751	\$662,257	\$88,457
Virginia	\$53,233,108	\$6,918,145	\$1,475,073
West Virginia	\$7,087,571	\$2,273,315	\$404,450
Alabama	\$16,914,243	\$1,979,571	\$1,009,415
Florida	\$40,501,979	\$9,756,514	\$2,277,793
Georgia	\$35,879,567	\$4,143,004	\$3,256,347
Kentucky	\$21,963,926	\$2,061,362	\$998,100
Mississippi	\$17,114,848	\$3,211,021	\$625,332
North Carolina	\$42,235,775	\$4,875,212	\$2,701,352
South Carolina	\$11,184,669	\$3,452,630	\$1,439,788
Tennessee	\$21,784,403	\$3,381,739	\$1,006,291
Illinois	\$48,185,162	\$7,370,838	\$892,281
Indiana	\$25,674,419	\$3,199,535	\$258,824
Michigan	\$64,682,576	\$3,525,953	\$1,953,399
Minnesota	\$24,447,818	\$2,609,675	\$1,114,179
Ohio	\$41,194,837	\$17,767,510	\$1,880,700
Wisconsin	\$13,431,165	\$1,863,523	\$649,995
Arkansas	\$17,099,661	\$1,498,792	\$895,704
Louisiana	\$35,680,858	\$4,365,592	\$1,835,389
New Mexico	\$13,156,007	\$1,714,676	\$284,088
Oklahoma	\$26,542,383	\$3,278,174	\$1,012,075
Texas	\$81,672,172	\$8,339,026	\$69,868
Colorado	\$12,743,422	\$1,384,147	\$1,637,865
Iowa	\$10,031,654	\$1,879,963	\$302,827
Kansas	\$11,106,172	\$965,074	\$23,820
Missouri	\$25,595,946	\$3,638,464	\$501,053
Montana	\$3,436,690	\$624,520	\$3,457
Nebraska	\$8,411,068	\$1,151,933	\$207,618
North Dakota	\$2,892,426	\$517,629	\$0
South Dakota	\$3,515,406	\$525,766	\$86,593
Utah	\$12,886,316	\$816,209	\$1,844,452
Wyoming	\$840,587	\$249,741	\$110,401
Alaska	\$6,251,869	\$267,421	\$337,200
Arizona	\$17,554,645	\$3,600,895	\$991,327
California	\$174,208,055	\$27,285,931	\$30,768,113
Guam	\$798,659	\$484,498	\$423,870
Hawaii	\$6,026,933	\$572,263	\$739,913
Idaho	\$4,883,791	\$494,852	\$134,021
Nevada	\$7,417,523	\$1,303,041	\$520,333
Oregon	\$12,499,806	\$2,737,418	\$949,778
Washington	\$24,806,615	\$2,674,495	\$820,649
US	\$1,328,161,937	\$178,506,144	\$109,027,307

TABLE 7: Food Stamp Program Federal Share of State Administrative Costs for ADP Services - FY 2005

STATE	Federal Share ADP Development Costs	Federal Share ADP Operations Costs
Connecticut	\$0	\$1,383,121
Maine	\$0	\$44,091
Massachusetts	\$0	\$324,469
New Hampshire	\$2,128	\$1,150,674
New York	\$977,319	\$10,452,837
Rhode Island	\$0	\$848,925
Vermont	\$0	\$218,463
Delaware	\$849,780	\$1,004,370
District of Columbia	\$0	\$712,059
Maryland	\$0	\$2,316,922
New Jersey	\$523,577	\$6,831,763
Pennsylvania	\$0	\$10,561,500
Virgin Islands	\$0	\$492,180
Virginia	\$0	\$7,236,546
West Virginia	\$0	\$1,863,263
Alabama	\$0	\$537,903
Florida	\$382,534	\$3,601,724
Georgia	\$0	\$7,597,717
Kentucky	\$0	\$982,427
Mississippi	\$0	\$1,158,311
North Carolina	\$0	\$1,875,146
South Carolina	\$0	\$1,143,530
Tennessee	\$0	\$1,765,710
Illinois	\$0	\$6,895,133
Indiana	\$0	\$2,471,717
Michigan	\$236,447	\$4,749,669
Minnesota	\$0	\$3,370,369
Ohio	\$0	\$2,855,375
Wisconsin	\$0	\$5,555,289
Arkansas	\$431,311	\$465,531
Louisiana	\$0	\$956,141
New Mexico	\$94,368	\$861,063
Oklahoma	\$0	\$2,352,073
Texas	\$6,051,293	\$24,651,092
Colorado	\$0	\$3,220,313
Iowa	\$0	\$832,127
Kansas	\$0	\$670,907
Missouri	\$1,725,330	\$546,229
Montana	\$0	\$1,266,299
Nebraska	\$0	\$2,636,030
North Dakota	\$0	\$369,868
South Dakota	\$0	\$244,258
Utah	\$872,868	\$504,196
Wyoming	\$36,542	\$291,432
Alaska	\$0	\$979,518
Arizona	\$0	\$367,027
California	\$18,370,718	\$29,345,866
Guam	\$0	\$241,705
Hawaii	\$0	\$1,011,703
Idaho	\$0	\$1,025,422
Nevada	\$789,381	\$868,170
Oregon	\$0	\$2,751,999
Washington	\$0	\$3,809,209
US	\$31,343,596	\$170,269,381

TABLE 8: Food Stamp Program Total Federal Share of State Administrative Costs - FY 2005

STATE	Federal Share State Administrative Costs
Connecticut	\$20,726,767
Maine	\$10,469,202
Massachusetts	\$35,094,150
New Hampshire	\$4,670,046
New York	\$269,250,515
Rhode Island	\$7,354,520
Vermont	\$6,312,190
Delaware	\$8,476,962
District of Columbia	\$12,313,725
Maryland	\$36,407,857
New Jersey	\$89,651,330
Pennsylvania	\$144,541,064
Virgin Islands	\$3,997,909
Virginia	\$76,840,813
West Virginia	\$14,198,636
Alabama	\$27,239,859
Florida	\$70,713,724
Georgia	\$56,223,752
Kentucky	\$29,435,609
Mississippi	\$25,035,974
North Carolina	\$60,609,374
South Carolina	\$20,154,183
Tennessee	\$37,366,395
Illinois	\$85,359,934
Indiana	\$40,273,400
Michigan	\$89,090,488
Minnesota	\$40,905,173
Ohio	\$104,179,387
Wisconsin	\$38,613,793
Arkansas	\$23,683,813
Louisiana	\$46,224,222
New Mexico	\$20,018,419
Oklahoma	\$36,297,725
Texas	\$143,258,267
Colorado	\$24,726,332
Iowa	\$15,689,620
Kansas	\$19,005,196
Missouri	\$41,541,129
Montana	\$7,614,071
Nebraska	\$15,159,426
North Dakota	\$5,786,931
South Dakota	\$6,730,617
Utah	\$19,856,215
Wyoming	\$4,396,191
Alaska	\$8,564,035
Arizona	\$35,178,328
California	\$437,225,958
Guam	\$2,614,374
Hawaii	\$9,755,863
Idaho	\$7,942,355
Nevada	\$11,962,567
Oregon	\$41,319,946
Washington	\$43,094,936
US	\$2,493,153,267

TABLE 9: Food Stamp Program Federal Share of Costs per Case per Month for Certification - FY 2005

STATE	Households Participating (Monthly)	Federal Share Certification Costs	Federal Cost Per Case Per Month for Certification
Connecticut	107,492	\$6,628,834	\$5.14
Maine	78,170	\$4,124,818	\$4.40
Massachusetts	176,121	\$25,336,671	\$11.99
New Hampshire	25,198	\$730,809	\$2.42
New York	915,703	\$114,359,185	\$10.41
Rhode Island	34,751	\$2,250,462	\$5.40
Vermont	22,355	\$737,487	\$2.75
Delaware	26,052	\$3,594,000	\$11.50
District of Columbia	44,362	\$7,441,948	\$13.98
Maryland	131,556	\$26,003,970	\$16.47
New Jersey	186,661	\$45,248,452	\$20.20
Pennsylvania	471,960	\$83,844,820	\$14.80
Virgin Islands	4,633	\$2,285,751	\$41.11
Virginia	214,983	\$53,233,108	\$20.63
West Virginia	114,038	\$7,087,571	\$5.18
Alabama	222,132	\$16,914,243	\$6.35
Florida	657,576	\$40,501,979	\$5.13
Georgia	375,739	\$35,879,567	\$7.96
Kentucky	245,707	\$21,963,926	\$7.45
Mississippi	174,500	\$17,114,848	\$8.17
North Carolina	343,397	\$42,235,775	\$10.25
South Carolina	219,503	\$11,184,669	\$4.25
Tennessee	374,011	\$21,784,403	\$4.85
Illinois	520,350	\$48,185,162	\$7.72
Indiana	240,045	\$25,674,419	\$8.91
Michigan	469,976	\$64,682,576	\$11.47
Minnesota	124,398	\$24,447,818	\$16.38
Ohio	448,524	\$41,194,837	\$7.65
Wisconsin	143,459	\$13,431,165	\$7.80
Arkansas	152,909	\$17,099,661	\$9.32
Louisiana	318,126	\$35,680,858	\$9.35
New Mexico	93,094	\$13,156,007	\$11.78
Oklahoma	172,837	\$26,542,383	\$12.80
Texas	941,050	\$81,672,172	\$7.23
Colorado	107,405	\$12,743,422	\$9.89
Iowa	89,655	\$10,031,654	\$9.32
Kansas	78,165	\$11,106,172	\$11.84
Missouri	298,380	\$25,595,946	\$7.15
Montana	34,573	\$3,436,690	\$8.28
Nebraska	49,948	\$8,411,068	\$14.03
North Dakota	18,927	\$2,892,426	\$12.74
South Dakota	22,483	\$3,515,406	\$13.03
Utah	53,162	\$12,886,316	\$20.20
Wyoming	10,422	\$840,587	\$6.72
Alaska	20,224	\$6,251,869	\$25.76
Arizona	220,498	\$17,554,645	\$6.63
California	785,682	\$174,208,055	\$18.48
Guam	8,066	\$798,659	\$8.25
Hawaii	47,309	\$6,026,933	\$10.62
Idaho	37,151	\$4,883,791	\$10.95
Nevada	54,877	\$7,417,523	\$11.26
Oregon	218,297	\$12,499,806	\$4.77
Washington	250,788	\$24,806,615	\$8.24
US	11,197,377	\$1,328,161,937	\$9.88

TABLE 10: Food Stamp Program Federal Share of Total State Cost per Case per Month - FY 2005

STATE	Households Participating (Monthly)	Federal Share Total Costs	Federal Total Cost Per Case per Month
Connecticut	107,492	\$20,726,767	\$16.07
Maine	78,170	\$10,469,202	\$11.16
Massachusetts	176,121	\$35,094,150	\$16.61
New Hampshire	25,198	\$4,670,046	\$15.44
New York	915,703	\$269,250,515	\$24.50
Rhode Island	34,751	\$7,354,520	\$17.64
Vermont	22,355	\$6,312,190	\$23.53
Delaware	26,052	\$8,476,962	\$27.12
District of Columbia	44,362	\$12,313,725	\$23.13
Maryland	131,556	\$36,407,857	\$23.06
New Jersey	186,661	\$89,651,330	\$40.02
Pennsylvania	471,960	\$144,541,064	\$25.52
Virgin Islands	4,633	\$3,997,909	\$71.91
Virginia	214,983	\$76,840,813	\$29.79
West Virginia	114,038	\$14,198,636	\$10.38
Alabama	222,132	\$27,239,859	\$10.22
Florida	657,576	\$70,713,724	\$8.96
Georgia	375,739	\$56,223,752	\$12.47
Kentucky	245,707	\$29,435,609	\$9.98
Mississippi	174,500	\$25,035,974	\$11.96
North Carolina	343,397	\$60,609,374	\$14.71
South Carolina	219,503	\$20,154,183	\$7.65
Tennessee	374,011	\$37,366,395	\$8.33
Illinois	520,350	\$85,359,934	\$13.67
Indiana	240,045	\$40,273,400	\$13.98
Michigan	469,976	\$89,090,488	\$15.80
Minnesota	124,398	\$40,905,173	\$27.40
Ohio	448,524	\$104,179,387	\$19.36
Wisconsin	143,459	\$38,613,793	\$22.43
Arkansas	152,909	\$23,683,813	\$12.91
Louisiana	318,126	\$46,224,222	\$12.11
New Mexico	93,094	\$20,018,419	\$17.92
Oklahoma	172,837	\$36,297,725	\$17.50
Texas	941,050	\$143,258,267	\$12.69
Colorado	107,405	\$24,726,332	\$19.18
Iowa	89,655	\$15,689,620	\$14.58
Kansas	78,165	\$19,005,196	\$20.26
Missouri	298,380	\$41,541,129	\$11.60
Montana	34,573	\$7,614,071	\$18.35
Nebraska	49,948	\$15,159,426	\$25.29
North Dakota	18,927	\$5,786,931	\$25.48
South Dakota	22,483	\$6,730,617	\$24.95
Utah	53,162	\$19,856,215	\$31.13
Wyoming	10,422	\$4,396,191	\$35.15
Alaska	20,224	\$8,564,035	\$35.29
Arizona	220,498	\$35,178,328	\$13.30
California	785,682	\$437,225,958	\$46.37
Guam	8,066	\$2,614,374	\$27.01
Hawaii	47,309	\$9,755,863	\$17.18
Idaho	37,151	\$7,942,355	\$17.82
Nevada	54,877	\$11,962,567	\$18.17
Oregon	218,297	\$41,319,946	\$15.77
Washington	250,788	\$43,094,936	\$14.32
US	11,197,377	\$2,493,153,267	\$18.55

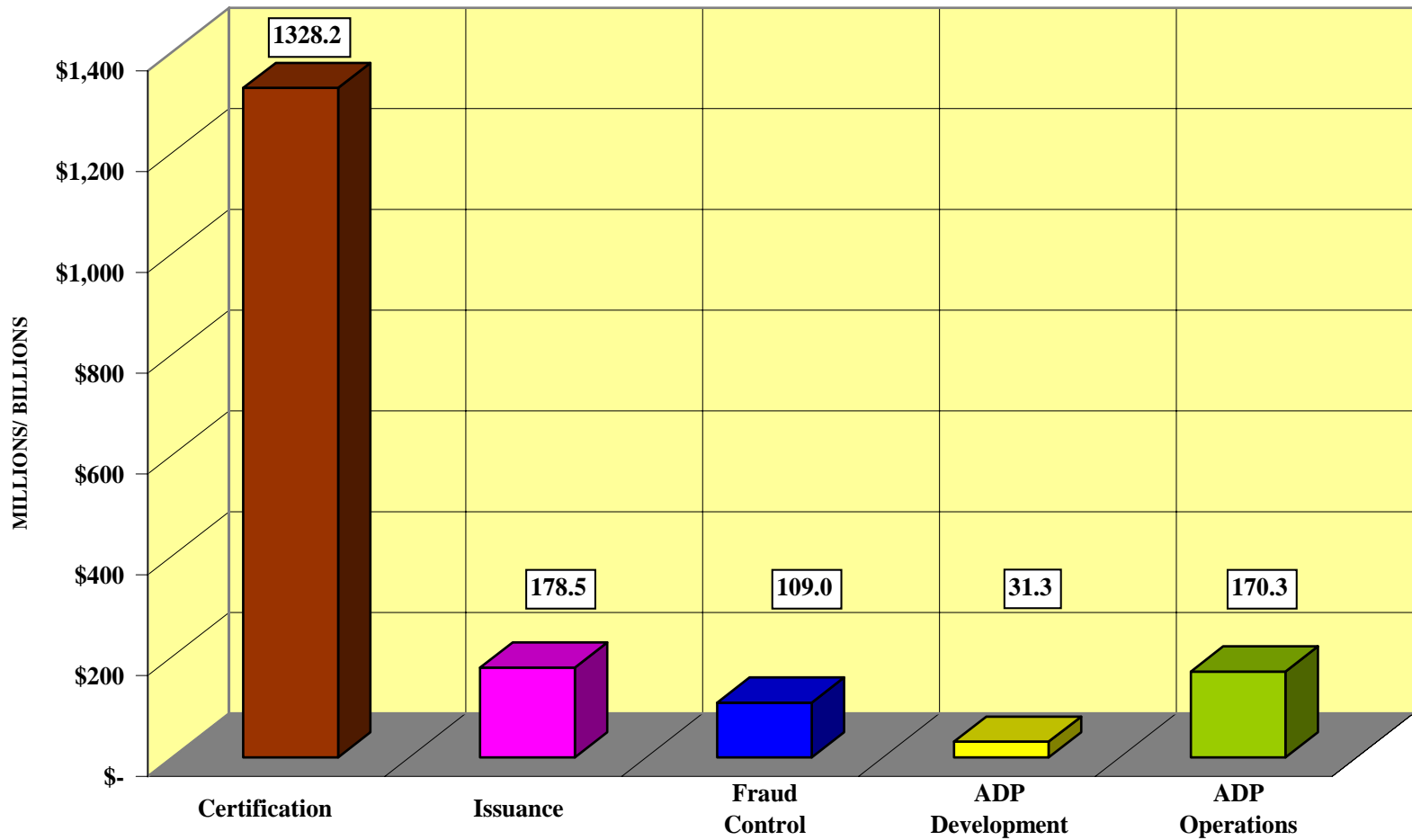
TABLE 11: Food Stamp Program State Administrative Costs - FY 2005

STATE	State Share Administrative Costs	Federal Share Administrative Costs	Total State Administrative Costs
Connecticut	\$23,868,332	\$20,726,767	\$44,595,099
Maine	\$11,572,026	\$10,469,202	\$22,041,228
Massachusetts	\$37,641,067	\$35,094,150	\$72,735,217
New Hampshire	\$5,651,062	\$4,670,046	\$10,321,108
New York	\$333,762,127	\$269,250,515	\$603,012,642
Rhode Island	\$7,414,580	\$7,354,520	\$14,769,100
Vermont	\$6,846,309	\$6,312,190	\$13,158,499
Delaware	\$8,841,571	\$8,476,962	\$17,318,533
District of Columbia	\$14,565,526	\$12,313,725	\$26,879,251
Maryland	\$37,389,381	\$36,407,857	\$73,797,238
New Jersey	\$100,485,706	\$89,651,330	\$190,137,036
Pennsylvania	\$139,230,584	\$144,541,064	\$283,771,648
Virgin Islands	\$3,452,684	\$3,997,909	\$7,450,593
Virginia	\$70,327,719	\$76,840,813	\$147,168,532
West Virginia	\$13,201,448	\$14,198,636	\$27,400,084
Alabama	\$29,203,573	\$27,239,859	\$56,443,432
Florida	\$93,235,054	\$70,713,724	\$163,948,778
Georgia	\$54,273,992	\$56,223,752	\$110,497,744
Kentucky	\$34,779,042	\$29,435,609	\$64,214,651
Mississippi	\$28,368,033	\$25,035,974	\$53,404,007
North Carolina	\$59,972,222	\$60,609,374	\$120,581,596
South Carolina	\$22,444,967	\$20,154,183	\$42,599,150
Tennessee	\$38,167,702	\$37,366,395	\$75,534,097
Illinois	\$95,758,751	\$85,359,934	\$181,118,685
Indiana	\$40,662,508	\$40,273,400	\$80,935,908
Michigan	\$106,077,205	\$89,090,488	\$195,167,693
Minnesota	\$43,951,722	\$40,905,173	\$84,856,895
Ohio	\$106,441,663	\$104,179,387	\$210,621,050
Wisconsin	\$38,184,962	\$38,613,793	\$76,798,755
Arkansas	\$24,931,941	\$23,683,813	\$48,615,754
Louisiana	\$46,652,554	\$46,224,222	\$92,876,776
New Mexico	\$22,090,789	\$20,018,419	\$42,109,208
Oklahoma	\$40,150,859	\$36,297,725	\$76,448,584
Texas	\$129,778,074	\$143,258,267	\$273,036,341
Colorado	\$27,847,497	\$24,726,332	\$52,573,829
Iowa	\$17,363,222	\$15,689,620	\$33,052,842
Kansas	\$21,585,483	\$19,005,196	\$40,590,679
Missouri	\$40,209,092	\$41,541,129	\$81,750,221
Montana	\$7,510,151	\$7,614,071	\$15,124,222
Nebraska	\$14,859,185	\$15,159,426	\$30,018,611
North Dakota	\$6,053,693	\$5,786,931	\$11,840,624
South Dakota	\$5,546,002	\$6,730,617	\$12,276,619
Utah	\$20,765,498	\$19,856,215	\$40,621,713
Wyoming	\$4,955,517	\$4,396,191	\$9,351,708
Alaska	\$8,688,596	\$8,564,035	\$17,252,631
Arizona	\$40,139,223	\$35,178,328	\$75,317,551
California	\$502,421,993	\$437,225,958	\$939,647,951
Guam	\$1,828,491	\$2,614,374	\$4,442,865
Hawaii	\$9,403,769	\$9,755,863	\$19,159,632
Idaho	\$9,056,550	\$7,942,355	\$16,998,905
Nevada	\$13,780,444	\$11,962,567	\$25,743,011
Oregon	\$46,917,023	\$41,319,946	\$88,236,969
Washington	\$44,791,690	\$43,094,936	\$87,886,626
US	\$2,713,098,854	\$2,493,153,267	\$5,206,252,121

TABLE 12: Food Stamp Program Administrative Cost Per Case per Month - FY 2005

STATE	Households Participating (Monthly)	Total State Administrative Costs	State Admin. Cost Per Case per Month
Connecticut	107,492	\$44,595,099	\$34.57
Maine	78,170	\$22,041,228	\$23.50
Massachusetts	176,121	\$72,735,217	\$34.42
New Hampshire	25,198	\$10,321,108	\$34.13
New York	915,703	\$603,012,642	\$54.88
Rhode Island	34,751	\$14,769,100	\$35.42
Vermont	22,355	\$13,158,499	\$49.05
Delaware	26,052	\$17,318,533	\$55.40
District of Columbia	44,362	\$26,879,251	\$50.49
Maryland	131,556	\$73,797,238	\$46.75
New Jersey	186,661	\$190,137,036	\$84.89
Pennsylvania	471,960	\$283,771,648	\$50.11
Virgin Islands	4,633	\$7,450,593	\$134.01
Virginia	214,983	\$147,168,532	\$57.05
West Virginia	114,038	\$27,400,084	\$20.02
Alabama	222,132	\$56,443,432	\$21.17
Florida	657,576	\$163,948,778	\$20.78
Georgia	375,739	\$110,497,744	\$24.51
Kentucky	245,707	\$64,214,651	\$21.78
Mississippi	174,500	\$53,404,007	\$25.50
North Carolina	343,397	\$120,581,596	\$29.26
South Carolina	219,503	\$42,599,150	\$16.17
Tennessee	374,011	\$75,534,097	\$16.83
Illinois	520,350	\$181,118,685	\$29.01
Indiana	240,045	\$80,935,908	\$28.10
Michigan	469,976	\$195,167,693	\$34.61
Minnesota	124,398	\$84,856,895	\$56.84
Ohio	448,524	\$210,621,050	\$39.13
Wisconsin	143,459	\$76,798,755	\$44.61
Arkansas	152,909	\$48,615,754	\$26.49
Louisiana	318,126	\$92,876,776	\$24.33
New Mexico	93,094	\$42,109,208	\$37.69
Oklahoma	172,837	\$76,448,584	\$36.86
Texas	941,050	\$273,036,341	\$24.18
Colorado	107,405	\$52,573,829	\$40.79
Iowa	89,655	\$33,052,842	\$30.72
Kansas	78,165	\$40,590,679	\$43.27
Missouri	298,380	\$81,750,221	\$22.83
Montana	34,573	\$15,124,222	\$36.45
Nebraska	49,948	\$30,018,611	\$50.08
North Dakota	18,927	\$11,840,624	\$52.13
South Dakota	22,483	\$12,276,619	\$45.50
Utah	53,162	\$40,621,713	\$63.68
Wyoming	10,422	\$9,351,708	\$74.77
Alaska	20,224	\$17,252,631	\$71.09
Arizona	220,498	\$75,317,551	\$28.46
California	785,682	\$939,647,951	\$99.66
Guam	8,066	\$4,442,865	\$45.90
Hawaii	47,309	\$19,159,632	\$33.75
Idaho	37,151	\$16,998,905	\$38.13
Nevada	54,877	\$25,743,011	\$39.09
Oregon	218,297	\$88,236,969	\$33.68
Washington	250,788	\$87,886,626	\$29.20
US	11,197,377	\$5,206,252,121	\$38.75

FEDERAL SHARE OF SELECTED STATE ADMINISTRATIVE COSTS FY 2005



FAIR HEARINGS



NOTABLE TRENDS

Fair Hearings

Food Stamp Program regulations provide recourse to households that have their benefits denied or their allotment reduced, suspended or cancelled as a result of an adverse decision by the State agency. This recourse is called the fair hearing process. The number of fair hearings conducted by States is reported annually on Form FNS-366B, the Program Activity Statement.

In FY 2005, the number of fair hearings increased by 3.32 percent. Nationally, approximately 4.2 hearings were conducted for every 1,000 households participating in FY 2005. In FY 2005, 72.2 percent of fair hearings upheld the caseworker's decision compared to 71.8 percent in FY 2004. A total of 36 States had case worker decisions affirmed in at least 75 percent of the hearings.



TABLE 13: Food Stamp Program Fair Hearings Upheld and Reversed - FY 2005

STATE	Fair Hearings Upheld	Fair Hearings Reversed	Percent Upheld
Connecticut	219	96	69.52%
Maine	32	0	100.00%
Massachusetts	427	204	67.67%
New Hampshire	5	0	100.00%
New York	1,467	5,247	21.85%
Rhode Island	120	17	87.59%
Vermont	19	4	82.61%
Delaware	15	10	60.00%
District of Columbia	0	0	0.00%
Maryland	197	67	74.62%
New Jersey	39	17	69.64%
Pennsylvania	5,781	574	90.97%
Virgin Islands	7	1	87.50%
Virginia	312	57	84.55%
West Virginia	60	8	88.24%
Alabama	125	9	93.28%
Florida	407	511	44.34%
Georgia	1,238	50	96.12%
Kentucky	59	15	79.73%
Mississippi	210	12	94.59%
North Carolina	1,155	40	96.65%
South Carolina	142	15	90.45%
Tennessee	8	5	61.54%
Illinois	187	30	86.18%
Indiana	115	47	70.99%
Michigan	376	54	87.44%
Minnesota	836	124	87.08%
Ohio	1,808	1,288	58.40%
Wisconsin	418	425	49.58%
Arkansas	48	3	94.12%
Louisiana	176	21	89.34%
New Mexico	33	5	86.84%
Oklahoma	21	3	87.50%
Texas	14,730	1,920	88.47%
Colorado	70	2	97.22%
Iowa	243	57	81.00%
Kansas	128	5	96.24%
Missouri	453	79	85.15%
Montana	53	11	82.81%
Nebraska	138	30	82.14%
North Dakota	6	0	100.00%
South Dakota	17	1	94.44%
Utah	34	2	94.44%
Wyoming	7	0	100.00%
Alaska	22	17	56.41%
Arizona	217	629	25.65%
California	1,710	1,386	55.23%
Guam	0	0	0.00%
Hawaii	13	4	76.47%
Idaho	41	7	85.42%
Nevada	44	1	97.78%
Oregon	181	16	91.88%
Washington	186	84	68.89%
US	34,355	13,210	72.23%

**FRAUD
INVESTIGATIONS,
PROSECUTIONS,
AND
ADMINISTRATIVE
DISQUALIFICATION
HEARINGS**



NOTABLE TRENDS

Fraud Control

In FY 2005, State fraud investigations increased to 771,796 compared to 745,697 in FY 2004, a 3.5 percent increase.

Fraud investigations are broken into pre-certification investigations and post-certification investigations. Pre-certification investigations are cases referred for investigation and completed prior to certification. Investigators assist in front-end detection by acting on referrals in suspicious cases and probing more deeply into a client's circumstances. Positive pre-certification investigations prevent fraud at intake and before a dollar loss can occur; they may also result in hearings/prosecutions that lead to disqualification (without a claim being established). On the other hand, post-certification investigations are investigations completed after certification. Positive post-certification investigations may result in an administrative disqualification hearing or prosecution, the disqualification of the individual who has committed an intentional program violation, and the establishment of a claim to recover the overissuance.

Both prosecution and administrative fraud hearing activity declined from the previous year. In FY 2005, the number of recipients disqualified from the Food Stamp Program for an intentional program violation declined to 43,027, a 21.90 percent decline from the previous year. About 70 percent of the disqualifications came out of the administrative fraud hearing process, compared to 67 percent in the prior year.

On the Federal level, FNS operates the Disqualified Recipient Subsystem (DRS). DRS is a centralized national database, utilizing data submitted each month by all 50 States, the District of Columbia, Guam, and the Virgin Islands, that tracks individuals disqualified from participation in the FSP for intentional program violations. DRS assists States in assigning the correct penalty, which varies by the type and number of the offense, to individuals being disqualified. It also assists States in preventing these individuals from crossing State lines and participating in another State during the period of their disqualification. Because an individual may be permanently disqualified, these records are held indefinitely. As of September 2005, this Federal database had records on over 1,001,000 recipients and over 1,074,000 disqualifications.



TABLE 14: Food Stamp Program Recipient Fraud Investigations - FY 2005

STATE	Pre-cert Investigations Negative	Pre-cert Investigations Positive	Post-Cert Investigations Negative	Post-Cert Investigations Positive	Total Investigations Completed	Fraud Dollars Determined by Post-Cert Investigations
Connecticut	1,138	714	384	165	2,401	\$274,801
Maine	0	0	22	19	41	\$88,792
Massachusetts	0	0	4,967	483	5,450	\$405,645
New Hampshire	83	35	752	94	964	\$158,695
New York	64,123	58,339	9,859	7,978	140,299	\$2,596,995
Rhode Island	1,589	353	663	9	2,614	\$73,750
Vermont	13	16	137	9	175	\$17,059
Delaware	987	35	56,249	68	57,339	\$182,601
District of Columbia	14	25	1,208	244	1,491	\$648,530
Maryland	25	4	1,491	148	1,668	\$36,344
New Jersey	1,417	1,630	6,520	3,211	12,778	\$1,481,670
Pennsylvania	8,638	10,947	1,445	942	21,972	\$1,602,384
Virgin Islands	0	1,480	12	63	1,555	\$68,431
Virginia	570	478	5,139	1,165	7,352	\$529,841
West Virginia	67	125	2,102	466	2,760	\$927,823
Alabama	151	287	705	621	1,764	\$1,573,196
Florida	756	10,544	19,252	2,102	32,654	\$1,864,517
Georgia	3,432	1,616	6,911	4,285	16,244	\$5,856,922
Kentucky	15	23	542	121	701	\$1,493,862
Mississippi	0	0	0	2,498	2,498	\$2,321,620
North Carolina	1,653	441	6,875	1,954	10,923	\$2,792,937
South Carolina	0	0	0	11,219	11,219	\$9,679,186
Tennessee	0	0	9,708	9,186	18,894	\$8,498,400
Illinois	2,646	1,304	31	481	4,462	\$917,598
Indiana	176	11	2,009	408	2,604	\$723,969
Michigan	974	353	1,271	2,673	5,271	\$3,958,881
Minnesota	3,676	2,789	540	972	7,977	\$1,209,952
Ohio	2,127	993	50,100	17,546	70,766	\$1,893,901
Wisconsin	1,346	721	600	882	3,549	\$1,016,278
Arkansas	81	97	2,243	4,644	7,065	\$3,118,917
Louisiana	0	0	120	776	896	\$1,093,387
New Mexico	0	0	80	166	246	\$150,084
Oklahoma	0	0	2,882	173	3,055	\$139,092
Texas	2	1	680	6,315	6,998	\$5,438,345
Colorado	147	12	969	237	1,365	\$183,786
Iowa	273	826	8	192	1,299	\$397,772
Kansas	348	422	267	689	1,726	\$1,182,744
Missouri	0	0	679	977	1,656	\$1,437,256
Montana	7	8	143	329	487	\$194,650
Nebraska	86	124	37	117	364	\$140,557
North Dakota	0	0	0	1	1	\$120
South Dakota	17	63	183	267	530	\$367,046
Utah	1,077	51	4,493	1,525	7,146	\$1,436,444
Wyoming	0	0	162	111	273	\$109,583
Alaska	388	218	406	195	1,207	\$212,414
Arizona	662	1,089	2,637	10,144	14,532	\$808,986
California	86,564	34,466	131,011	3,702	255,743	\$1,480,800
Guam	0	0	170	77	247	\$65,788
Hawaii	0	0	641	318	959	\$1,169,075
Idaho	0	0	196	211	407	\$226,018
Nevada	381	170	939	559	2,049	\$140,990
Oregon	0	0	1,661	512	2,173	\$764,600
Washington	7,268	5,570	29	120	12,987	\$162,709
US	192,917	136,380	340,130	102,369	771,796	\$73,315,743

RECIPIENT FRAUD INVESTIGATIONS

FY 2005

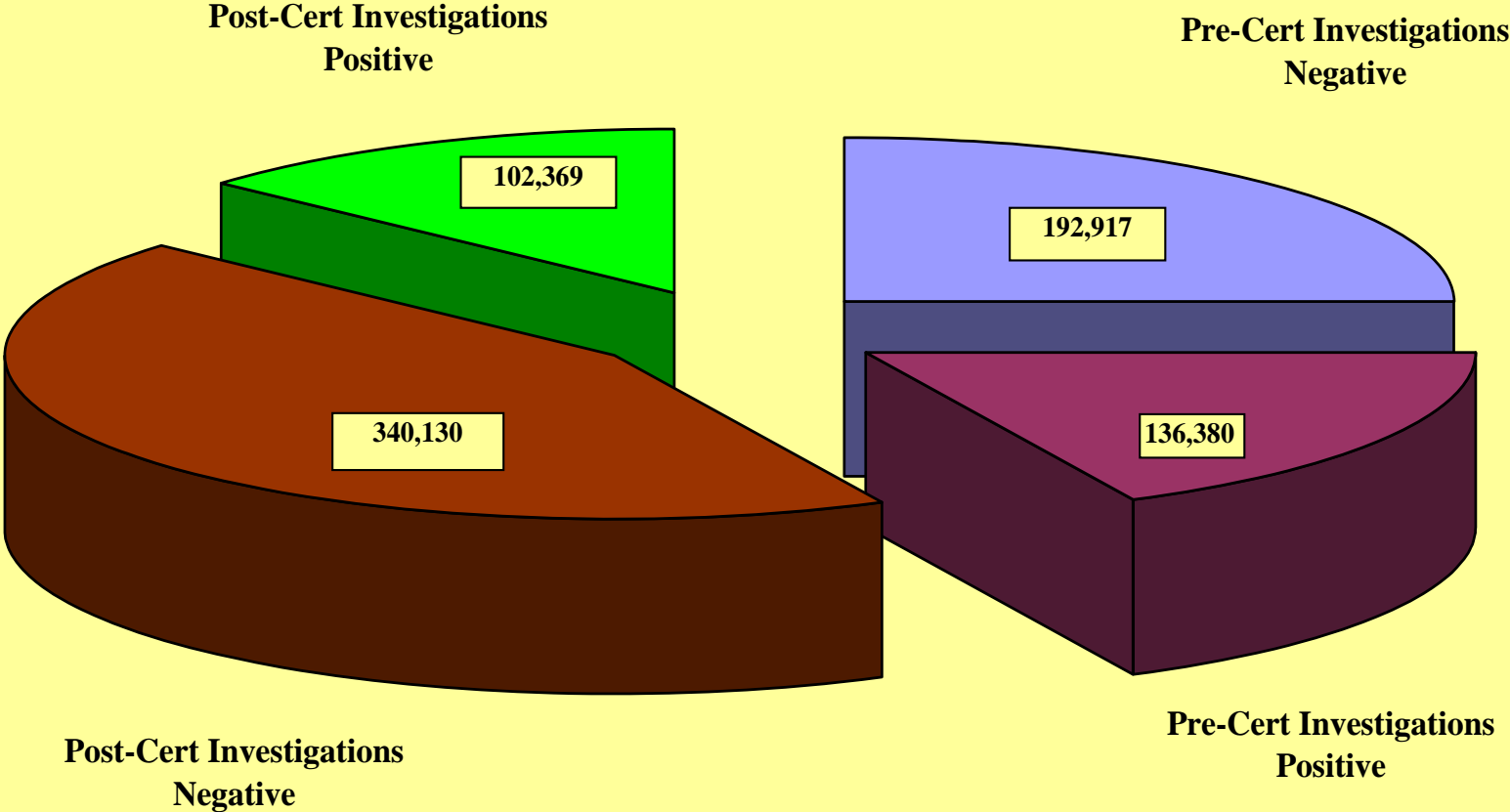


TABLE 15: Food Stamp Program State Prosecutions - FY 2005

STATE	Disqualification Consent Agreement	Convictions	Acquittals	Total Disqualifications From Prosecutions
Connecticut	0	28	3	28
Maine	7	7	0	14
Massachusetts	0	120	91	120
New Hampshire	0	17	0	17
New York	554	369	7	923
Rhode Island	0	3	2	3
Vermont	0	4	0	4
Delaware	0	40	4	40
District of Columbia	5	4	0	9
Maryland	0	1	0	1
New Jersey	134	177	9	311
Pennsylvania	476	401	7	877
Virgin Islands	0	0	0	0
Virginia	0	201	21	201
West Virginia	0	88	0	88
Alabama	0	74	0	74
Florida	0	498	22	498
Georgia	1,404	30	5	1,434
Kentucky	4	137	34	141
Mississippi	0	6	0	6
North Carolina	87	219	2	306
South Carolina	0	26	0	26
Tennessee	0	79	0	79
Illinois	0	21	0	21
Indiana	0	36	2	36
Michigan	1,808	227	0	2,035
Minnesota	0	217	9	217
Ohio	1,140	250	9	1,390
Wisconsin	7	32	5	39
Arkansas	11	41	0	52
Louisiana	32	29	0	61
New Mexico	0	0	0	0
Oklahoma	38	82	0	120
Texas	395	201	2	596
Colorado	1	27	3	28
Iowa	0	17	2	17
Kansas	32	80	0	112
Missouri	67	49	0	116
Montana	0	0	0	0
Nebraska	0	13	0	13
North Dakota	0	0	0	0
South Dakota	1	12	0	13
Utah	0	2	0	2
Wyoming	0	4	0	4
Alaska	3	2	0	5
Arizona	0	31	0	31
California	151	2,666	13	2,817
Guam	0	0	0	0
Hawaii	21	42	2	63
Idaho	4	10	1	14
Nevada	0	0	0	0
Oregon	7	4	0	11
Washington	0	10	0	10
US	6,389	6,634	255	13,023

TABLE 16: Food Stamp Program State Prosecutions - FY 2005

STATE	Disq. Consent Agreements and Convictions	Amount of Fraud Determined	Average Amount of Fraud per DCA or Conviction
Connecticut	28	\$101,487	\$3,625
Maine	14	\$65,970	\$4,712
Massachusetts	120	\$183,521	\$1,529
New Hampshire	17	\$39,957	\$2,350
New York	923	\$640,954	\$694
Rhode Island	3	\$15,442	\$5,147
Vermont	4	\$15,407	\$3,852
Delaware	40	\$49,981	\$1,250
District of Columbia	9	\$7,369	\$819
Maryland	1	\$9,777	\$9,777
New Jersey	311	\$608,209	\$1,956
Pennsylvania	877	\$1,238,721	\$1,412
Virgin Islands	0	\$0	N/A
Virginia	201	\$234,161	\$1,165
West Virginia	88	\$450,000	\$5,114
Alabama	74	\$242,761	\$3,281
Florida	498	\$788,329	\$1,583
Georgia	1,434	\$2,569,387	\$1,792
Kentucky	141	\$770,550	\$5,465
Mississippi	6	\$6,145	\$1,024
North Carolina	306	\$640,122	\$2,092
South Carolina	26	\$112,460	\$4,325
Tennessee	79	\$84,094	\$1,064
Illinois	21	\$103,019	\$4,906
Indiana	36	\$155,807	\$4,328
Michigan	2,035	\$2,500,597	\$1,229
Minnesota	217	\$306,453	\$1,412
Ohio	1,390	\$912,828	\$657
Wisconsin	39	\$64,373	\$1,651
Arkansas	52	\$130,156	\$2,503
Louisiana	61	\$238,015	\$3,902
New Mexico	0	\$0	N/A
Oklahoma	120	\$181,210	\$1,510
Texas	596	\$2,642,576	\$4,434
Colorado	28	\$78,314	\$2,797
Iowa	17	\$60,447	\$3,556
Kansas	112	\$731,409	\$6,530
Missouri	116	\$331,393	\$2,857
Montana	0	\$0	N/A
Nebraska	13	\$5,796	\$446
North Dakota	0	\$0	N/A
South Dakota	13	\$38,583	\$2,968
Utah	2	\$6,869	\$3,435
Wyoming	4	\$27,822	\$6,956
Alaska	5	\$16,128	\$3,226
Arizona	31	\$52,648	\$1,698
California	2,817	\$1,126,800	\$400
Guam	0	\$0	N/A
Hawaii	63	\$551,134	\$8,748
Idaho	14	\$20,401	\$1,457
Nevada	0	\$0	N/A
Oregon	11	\$33,600	\$3,055
Washington	10	\$34,861	\$3,486
US	13,023	\$19,226,043	\$1,476

TABLE 17: Food Stamp Program Administrative Disqualification Hearings - FY 2005

STATE	Waived Hearings	Hearing Convictions Upheld	Hearings Acquittals	Total Disq. from Admin. Disq. Hearings
Connecticut	96	26	2	122
Maine	18	53	0	71
Massachusetts	35	277	6	312
New Hampshire	39	0	0	39
New York	118	401	66	519
Rhode Island	11	18	9	29
Vermont	52	3	2	55
Delaware	60	0	0	60
District of Columbia	0	0	0	0
Maryland	99	4	3	103
New Jersey	1,261	94	0	1,355
Pennsylvania	31	12	2	43
Virgin Islands	29	45	4	74
Virginia	748	81	13	829
West Virginia	211	96	16	307
Alabama	280	276	14	556
Florida	2,011	246	21	2,257
Georgia	1,663	1,173	56	2,836
Kentucky	270	45	13	315
Mississippi	1,650	0	0	1,650
North Carolina	897	821	41	1,718
South Carolina	496	701	21	1,197
Tennessee	1,056	1,280	6	2,336
Illinois	498	522	29	1,020
Indiana	70	264	16	334
Michigan	32	94	14	126
Minnesota	872	143	18	1,015
Ohio	891	310	29	1,201
Wisconsin	25	3	0	28
Arkansas	2	130	12	132
Louisiana	207	521	17	728
New Mexico	26	44	19	70
Oklahoma	299	88	12	387
Texas	1,621	1,358	257	2,979
Colorado	291	52	11	343
Iowa	0	162	21	162
Kansas	10	43	3	53
Missouri	516	126	3	642
Montana	337	65	4	402
Nebraska	97	108	2	205
North Dakota	121	20	4	141
South Dakota	65	10	3	75
Utah	37	235	179	272
Wyoming	50	65	6	115
Alaska	180	15	2	195
Arizona	3	57	9	60
California	152	313	7	465
Guam	77	0	0	77
Hawaii	379	137	7	516
Idaho	154	6	4	160
Nevada	447	190	8	637
Oregon	634	38	3	672
Washington	0	9	2	9
US	19,224	10,780	996	30,004

TABLE 18: Food Stamp Administrative Disqualification Hearings - FY 2005

STATE	Waived and Upheld Hearings	Amount of Fraud Determined	Average Amount of Fraud per Waived or Upheld Hearing
Connecticut	122	\$36,570	\$300
Maine	71	\$198,694	\$2,799
Massachusetts	312	\$242,945	\$779
New Hampshire	39	\$59,051	\$1,514
New York	519	\$323,629	\$624
Rhode Island	29	\$74,808	\$2,580
Vermont	55	\$81,965	\$1,490
Delaware	60	\$49,980	\$833
District of Columbia	0	\$0	N/A
Maryland	103	\$93,754	\$910
New Jersey	1,355	\$1,724,558	\$1,273
Pennsylvania	43	\$6,337	\$147
Virgin Islands	74	\$84,004	\$1,135
Virginia	829	\$259,680	\$313
West Virginia	307	\$281,000	\$915
Alabama	556	\$474,082	\$853
Florida	2,257	\$1,020,984	\$452
Georgia	2,836	\$2,742,094	\$967
Kentucky	315	\$43,656	\$139
Mississippi	1,650	\$1,115,262	\$676
North Carolina	1,718	\$1,922,932	\$1,119
South Carolina	1,197	\$985,437	\$823
Tennessee	2,336	\$3,182,500	\$1,362
Illinois	1,020	\$1,157,100	\$1,134
Indiana	334	\$661,374	\$1,980
Michigan	126	\$124,704	\$990
Minnesota	1,015	\$816,359	\$804
Ohio	1,201	\$1,103,494	\$919
Wisconsin	28	\$30,482	\$1,089
Arkansas	132	\$308,801	\$2,339
Louisiana	728	\$728,703	\$1,001
New Mexico	70	\$129,768	\$1,854
Oklahoma	387	\$585,848	\$1,514
Texas	2,979	\$1,577,572	\$530
Colorado	343	\$201,380	\$587
Iowa	162	\$170,669	\$1,054
Kansas	53	\$45,390	\$856
Missouri	642	\$341,382	\$532
Montana	402	\$195,727	\$487
Nebraska	205	\$248,806	\$1,214
North Dakota	141	\$23,880	\$169
South Dakota	75	\$65,058	\$867
Utah	272	\$342,329	\$1,259
Wyoming	115	\$74,837	\$651
Alaska	195	\$212,414	\$1,089
Arizona	60	\$191,395	\$3,190
California	465	N/A	N/A
Guam	77	\$65,788	\$854
Hawaii	516	\$371,211	\$719
Idaho	160	\$132,723	\$830
Nevada	637	\$207,090	\$325
Oregon	672	\$925,200	\$1,377
Washington	9	\$8,293	\$921
US	30,004	\$26,051,699	\$868

TABLE 19: Food Stamp Program Average Amount of Fraud per Hearing or Prosecution - FY 2005

STATE	Average Amount of Fraud per Waived or Upheld Hearing	Average Amount of Fraud per DCA or Conviction
Connecticut	\$300	\$3,625
Maine	\$2,799	\$4,712
Massachusetts	\$779	\$1,529
New Hampshire	\$1,514	\$2,350
New York	\$624	\$694
Rhode Island	\$2,580	\$5,147
Vermont	\$1,490	\$3,852
Delaware	\$833	\$1,250
District of Columbia	N/A	\$819
Maryland	\$910	\$9,777
New Jersey	\$1,273	\$1,956
Pennsylvania	\$147	\$1,412
Virgin Islands	\$1,135	N/A
Virginia	\$313	\$1,165
West Virginia	\$915	\$5,114
Alabama	\$853	\$3,281
Florida	\$452	\$1,583
Georgia	\$967	\$1,792
Kentucky	\$139	\$5,465
Mississippi	\$676	\$1,024
North Carolina	\$1,119	\$2,092
South Carolina	\$823	\$4,325
Tennessee	\$1,362	\$1,064
Illinois	\$1,134	\$4,906
Indiana	\$1,980	\$4,328
Michigan	\$990	\$1,229
Minnesota	\$804	\$1,412
Ohio	\$919	\$657
Wisconsin	\$1,089	\$1,651
Arkansas	\$2,339	\$2,503
Louisiana	\$1,001	\$3,902
New Mexico	\$1,854	N/A
Oklahoma	\$1,514	\$1,510
Texas	\$530	\$4,434
Colorado	\$587	\$2,797
Iowa	\$1,054	\$3,556
Kansas	\$856	\$6,530
Missouri	\$532	\$2,857
Montana	\$487	N/A
Nebraska	\$1,214	\$446
North Dakota	\$169	N/A
South Dakota	\$867	\$2,968
Utah	\$1,259	\$3,435
Wyoming	\$651	\$6,956
Alaska	\$1,089	\$3,226
Arizona	\$3,190	\$1,698
California	N/A	\$400
Guam	\$854	N/A
Hawaii	\$719	\$8,748
Idaho	\$830	\$1,457
Nevada	\$325	N/A
Oregon	\$1,377	\$3,055
Washington	\$921	\$3,486
US	\$868	\$1,476

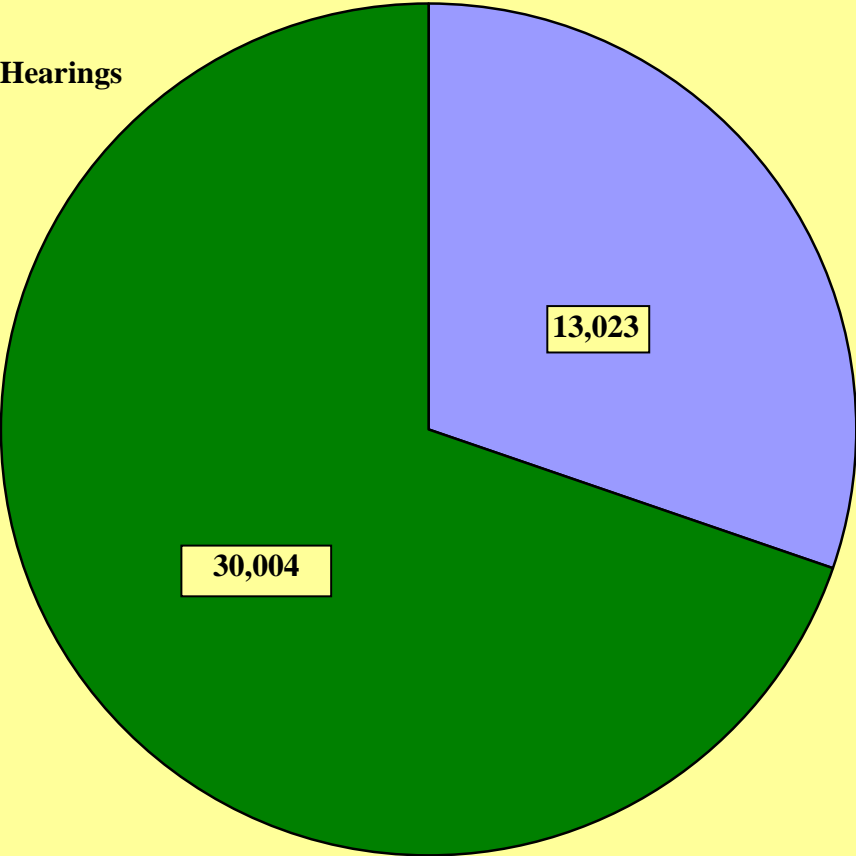
TABLE 20: Food Stamp Program Disqualification Determinations - FY 2005

STATE	Total Disqualifications From Prosecutions	Total Disqualifications from Admin. Disq. Hearings	Total Disqualified
Connecticut	28	122	150
Maine	14	71	85
Massachusetts	120	312	432
New Hampshire	17	39	56
New York	923	519	1,442
Rhode Island	3	29	32
Vermont	4	55	59
Delaware	40	60	100
District of Columbia	9	0	9
Maryland	1	103	104
New Jersey	311	1,355	1,666
Pennsylvania	877	43	920
Virgin Islands	0	74	74
Virginia	201	829	1,030
West Virginia	88	307	395
Alabama	74	556	630
Florida	498	2,257	2,755
Georgia	1,434	2,836	4,270
Kentucky	141	315	456
Mississippi	6	1,650	1,656
North Carolina	306	1,718	2,024
South Carolina	26	1,197	1,223
Tennessee	79	2,336	2,415
Illinois	21	1,020	1,041
Indiana	36	334	370
Michigan	2,035	126	2,161
Minnesota	217	1,015	1,232
Ohio	1,390	1,201	2,591
Wisconsin	39	28	67
Arkansas	52	132	184
Louisiana	61	728	789
New Mexico	0	70	70
Oklahoma	120	387	507
Texas	596	2,979	3,575
Colorado	28	343	371
Iowa	17	162	179
Kansas	112	53	165
Missouri	116	642	758
Montana	0	402	402
Nebraska	13	205	218
North Dakota	0	141	141
South Dakota	13	75	88
Utah	2	272	274
Wyoming	4	115	119
Alaska	5	195	200
Arizona	31	60	91
California	2,817	465	3,282
Guam	0	77	77
Hawaii	63	516	579
Idaho	14	160	174
Nevada	0	637	637
Oregon	11	672	683
Washington	10	9	19
US	13,023	30,004	43,027

DISQUALIFICATION DETERMINATIONS FY 2005

Disqualifications from
Administrative Disqualification Hearings

Disqualifications from
Prosecutions



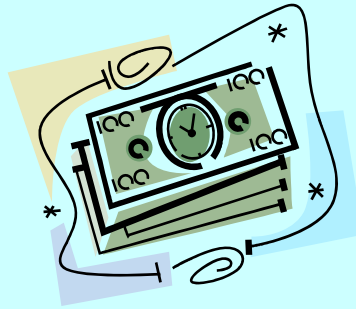
DISQUALIFIED RECIPIENTS



TABLE 21: Food Stamp Program Federal Disqualified Recipients Database as of September 30, 2005

STATE	Total Recipients In Database	Total Disqualifications In Database
Connecticut	2,349	2,380
Maine	1,367	1,373
Massachusetts	11,329	11,978
New Hampshire	3,359	3,486
New York	49,097	50,880
Rhode Island	1,190	1,377
Vermont	1,396	1,509
Delaware	807	819
District of Columbia	1,156	1,212
Maryland	7,357	8,167
New Jersey	28,480	34,441
Pennsylvania	32,707	33,478
Virgin Islands	361	364
Virginia	16,627	17,651
West Virginia	7,882	8,174
Alabama	29,578	31,466
Florida	56,665	60,723
Georgia	95,398	108,469
Kentucky	23,227	24,339
Mississippi	56,463	62,656
North Carolina	31,347	33,111
South Carolina	27,319	29,689
Tennessee	43,033	46,579
Illinois	21,078	21,585
Indiana	8,839	8,853
Michigan	61,055	64,295
Minnesota	16,978	18,276
Ohio	36,489	38,992
Wisconsin	8,021	8,576
Arkansas	2,635	2,707
Louisiana	18,192	18,680
New Mexico	1,613	1,771
Oklahoma	8,914	9,331
Texas	55,222	57,777
Colorado	26,372	28,185
Iowa	2,569	2,725
Kansas	8,597	9,349
Missouri	43,298	46,618
Montana	6,296	6,601
Nebraska	1,247	1,304
North Dakota	2,722	3,007
South Dakota	2,898	3,090
Utah	2,656	2,773
Wyoming	1,532	1,663
Alaska	959	987
Arizona	9,076	9,350
California	80,560	83,584
Guam	777	777
Hawaii	12,455	13,523
Idaho	5,737	6,349
Nevada	6,569	6,863
Oregon	17,186	19,460
Washington	2,604	2,760
US	1,001,640	1,074,132

RECIPIENT CLAIMS



NOTABLE TRENDS

Recipient Claim Collections

Recipient claims are established against any household that has received more food stamp benefits than it is entitled to receive. Claims fall in three categories: intentional program violation (fraud claims), inadvertent household error, or agency error. State agencies are entitled to 35 percent of fraud claims and certain inadvertent household error claims collected and 20 percent of the remaining inadvertent household error claims collected.

In FY 2005, State agencies established \$259.4 million in new claims against households for overissuances and collected \$206.7 million. The average new claim established was for \$449. Collections increased 2.4 percent in FY 2005. Collections via recoupment, in which the State agency uses a part of the benefit otherwise payable to the household to pay an outstanding claim, decreased in FY 2005.

During the fiscal year almost \$74.4 million out of the total State agency collections reported above was collected by the Federal Government through the Treasury Offset Program (TOP). As a participating partner in this program, State agencies notify the household and then send the delinquent claims through FNS to Treasury for possible collection under this program. This Federal program offsets amounts from any eligible Federal payment otherwise due a household and uses those funds to pay the outstanding claim. The collections are made by Treasury on behalf of the FSP. The Federal collections make up 36 percent of total State agency collections for FY 2005. In FY 2005, 52 State agencies participated in the Federal debt collection program. Since its inception in FY 1992, the Federal debt collection program has collected \$753.3 million in food stamp recipient claims.

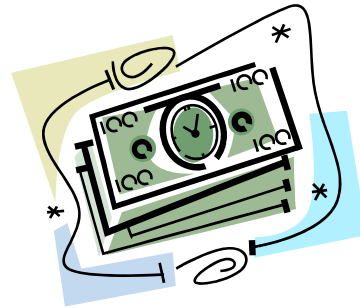


TABLE 22: Food Stamp Program New Claims Established - FY 2005

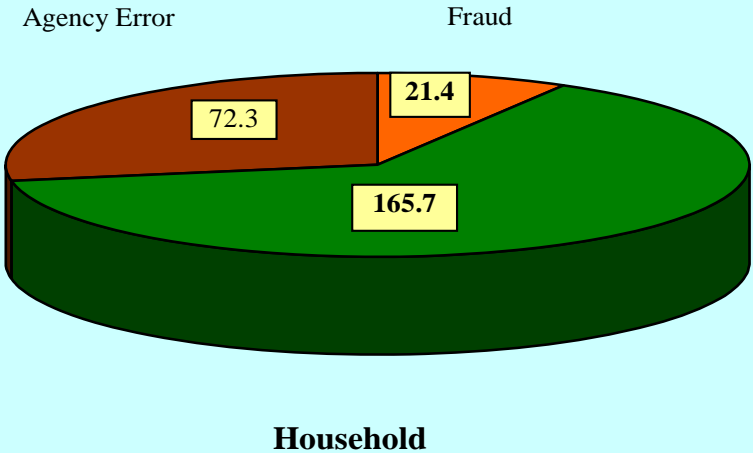
STATE	Fraud Claims Established	Household Error Established	Agency Error Established	Total Claims Established
Connecticut	\$23,463	\$837,472	\$511,049	\$1,371,984
Maine	\$85,673	\$734,602	\$265,233	\$1,085,507
Massachusetts	\$380,784	\$791,742	\$69,025	\$1,241,550
New Hampshire	\$85,641	\$137,940	\$47,549	\$271,130
New York	\$1,487,158	\$2,974,538	\$1,592,518	\$6,054,214
Rhode Island	\$120,048	\$481,941	\$105,908	\$707,897
Vermont	\$49,109	\$197,822	\$57,645	\$304,576
Delaware	\$10,311	\$518,290	\$74,815	\$603,416
District of Columbia	\$2,830	\$1,281,618	\$15,186	\$1,299,634
Maryland	\$105,566	\$1,608,007	\$736,122	\$2,449,695
New Jersey	\$534,655	\$5,746,536	\$428,827	\$6,710,018
Pennsylvania	\$0	\$7,462,191	\$1,175,743	\$8,637,934
Virgin Islands	\$60,590	\$211,225	\$37,588	\$309,404
Virginia	\$715,784	\$1,394,138	\$507,184	\$2,617,106
West Virginia	\$728,066	\$2,239,408	\$529,935	\$3,497,409
Alabama	\$124,368	\$3,008,496	\$1,068,438	\$4,201,303
Florida	\$24,597	\$6,692,841	\$2,611,253	\$9,328,692
Georgia	\$1,381,789	\$6,169,872	\$1,609,524	\$9,161,186
Kentucky	\$1,153,375	\$1,889,564	\$456,541	\$3,499,480
Mississippi	\$1,130,387	\$3,176,309	\$555,064	\$4,861,760
North Carolina	\$1,458,514	\$6,432,560	\$1,197,284	\$9,088,358
South Carolina	\$33,380	\$9,244,013	\$1,033,604	\$10,310,997
Tennessee	\$998,632	\$5,510,319	\$768,326	\$7,277,277
Illinois	\$0	\$15,706,814	\$1,211,987	\$16,918,801
Indiana	\$712,192	\$3,605,810	\$531,835	\$4,849,837
Michigan	\$642,853	\$1,095,267	\$919,233	\$2,657,353
Minnesota	\$491,201	\$4,224,221	\$925,015	\$5,640,436
Ohio	\$1,261,895	\$5,009,670	\$1,497,448	\$7,769,013
Wisconsin	\$172,709	\$1,600,684	\$278,570	\$2,051,963
Arkansas	\$348,304	\$368,827	\$131,248	\$848,378
Louisiana	\$382,749	\$997,838	\$234,952	\$1,615,539
New Mexico	\$93,727	\$961,588	\$436,124	\$1,491,438
Oklahoma	\$100,108	\$1,081,785	\$275,621	\$1,457,514
Texas	\$1,169,685	\$8,686,356	\$1,910,889	\$11,766,930
Colorado	\$81,382	\$255,320	\$63,506	\$400,208
Iowa	\$50,017	\$670,255	\$84,273	\$804,546
Kansas	\$115,057	\$1,049,203	\$437,990	\$1,602,249
Missouri	\$59,732	\$2,540,469	\$513,730	\$3,113,931
Montana	\$146,392	\$339,607	\$427,255	\$913,254
Nebraska	\$0	\$705,390	\$395,951	\$1,101,341
North Dakota	\$23,472	\$238,836	\$135,961	\$398,269
South Dakota	\$37,998	\$328,448	\$51,067	\$417,513
Utah	\$7,719	\$1,158,945	\$452,707	\$1,619,371
Wyoming	\$206	\$149,047	\$35,128	\$184,381
Alaska	\$183,940	\$106,060	\$145,589	\$435,589
Arizona	\$99,510	\$2,104,058	\$848,393	\$3,051,962
California	\$3,109,058	\$31,310,680	\$42,545,099	\$76,964,837
Guam	\$0	\$67,009	\$9,569	\$76,578
Hawaii	\$261,083	\$2,182,348	\$369,891	\$2,813,322
Idaho	\$158,075	\$97,873	\$83,248	\$339,196
Nevada	\$192,799	\$535,655	\$65,570	\$794,025
Oregon	\$704,248	\$6,737,199	\$960,284	\$8,401,731
Washington	\$135,823	\$3,029,223	\$821,066	\$3,986,112
US	\$21,436,653	\$165,685,930	\$72,253,559	\$259,376,141

TABLE 23: Food Stamp Program Recipient Claims - Number of New Claims Established - FY 2005

STATE	Number of Fraud Claims Established	Number of Household Error Established	Number of Agency Error Established	Number of Total Claims Established
Connecticut	25	1,408	2,729	4,162
Maine	50	984	614	1,648
Massachusetts	431	1,832	153	2,416
New Hampshire	51	187	98	336
New York	1,233	4,925	3,940	10,098
Rhode Island	38	583	136	757
Vermont	47	378	93	518
Delaware	10	827	132	969
District of Columbia	1	1,104	30	1,135
Maryland	62	3,033	2,440	5,535
New Jersey	349	7,500	912	8,761
Pennsylvania	0	13,556	3,595	17,151
Virgin Islands	69	301	88	458
Virginia	823	2,426	1,794	5,043
West Virginia	447	4,429	1,539	6,415
Alabama	144	2,561	2,201	4,906
Florida	28	9,391	5,507	14,926
Georgia	1,172	5,366	5,013	11,551
Kentucky	416	1,213	984	2,613
Mississippi	1,379	5,616	1,977	8,972
North Carolina	964	4,995	2,538	8,497
South Carolina	51	9,797	1,573	11,421
Tennessee	370	5,307	1,397	7,074
Illinois	0	15,479	2,242	17,721
Indiana	378	2,704	861	3,943
Michigan	383	2,743	714	3,840
Minnesota	412	8,997	3,557	12,966
Ohio	1,104	9,815	3,833	14,752
Wisconsin	150	2,080	983	3,213
Arkansas	272	375	362	1,009
Louisiana	170	1,148	374	1,692
New Mexico	60	3,645	2,363	6,068
Oklahoma	74	1,160	514	1,748
Texas	1,454	14,464	3,549	19,467
Colorado	44	247	178	469
Iowa	67	809	380	1,256
Kansas	83	1,951	3,482	5,516
Missouri	46	2,357	712	3,115
Montana	134	643	1,647	2,424
Nebraska	0	1,514	1,549	3,063
North Dakota	48	831	872	1,751
South Dakota	44	1,474	354	1,872
Utah	3	2,153	1,368	3,524
Wyoming	4	253	109	366
Alaska	137	168	321	626
Arizona	37	2,985	1,876	4,898
California	1,905	74,610	220,724	297,239
Guam	0	73	30	103
Hawaii	133	4,777	2,161	7,071
Idaho	119	191	322	632
Nevada	184	476	206	866
Oregon	2,066	7,192	1,451	10,709
Washington	283	6,963	3,174	10,420
US	17,954	259,996	299,751	577,701

**CLAIMS ESTABLISHED & CLAIMS COLLECTED
(MILLIONS)
FY 2005**

CLAIMS ESTABLISHED



CLAIMS COLLECTED

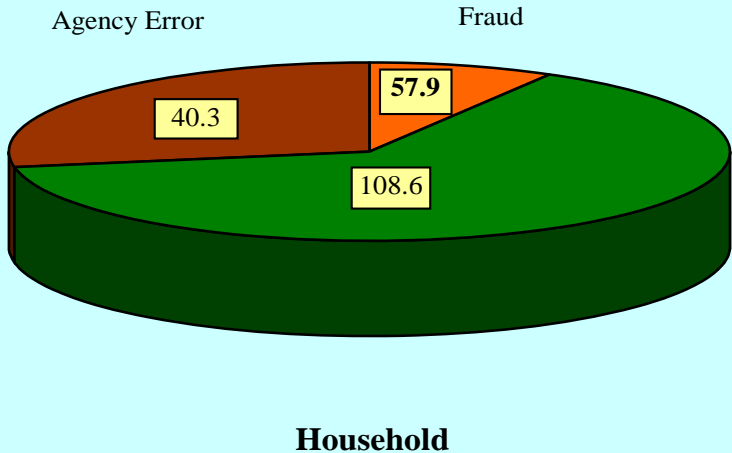


TABLE 24: Food Stamp Program Recipient Claims - Average Dollar Amount for New Claims Established - FY 2005

STATE	Avg Dollar Amount for New Fraud Claims Established	Avg Dollar Amount for Household Error Claims Established	Avg Dollar Amount for Agency Error Claims Established	Avg Dollar Amount for All New Claims Established
Connecticut	\$939	\$595	\$187	\$330
Maine	\$1,713	\$747	\$432	\$659
Massachusetts	\$883	\$432	\$451	\$514
New Hampshire	\$1,679	\$738	\$485	\$807
New York	\$1,206	\$604	\$404	\$600
Rhode Island	\$3,159	\$827	\$779	\$935
Vermont	\$1,045	\$523	\$620	\$588
Delaware	\$1,031	\$627	\$567	\$623
District of Columbia	\$2,830	\$1,161	\$506	\$1,145
Maryland	\$1,703	\$530	\$302	\$443
New Jersey	\$1,532	\$766	\$470	\$766
Pennsylvania	N/A	\$550	\$327	\$504
Virgin Islands	\$878	\$702	\$427	\$676
Virginia	\$870	\$575	\$283	\$519
West Virginia	\$1,629	\$506	\$344	\$545
Alabama	\$864	\$1,175	\$485	\$856
Florida	\$878	\$713	\$474	\$625
Georgia	\$1,179	\$1,150	\$321	\$793
Kentucky	\$2,773	\$1,558	\$464	\$1,339
Mississippi	\$820	\$566	\$281	\$542
North Carolina	\$1,513	\$1,288	\$472	\$1,070
South Carolina	\$655	\$944	\$657	\$903
Tennessee	\$2,699	\$1,038	\$550	\$1,029
Illinois	\$0	\$1,015	\$541	\$955
Indiana	\$1,884	\$1,334	\$618	\$1,230
Michigan	\$1,678	\$399	\$1,287	\$692
Minnesota	\$1,192	\$470	\$260	\$435
Ohio	\$1,143	\$510	\$391	\$527
Wisconsin	\$1,151	\$770	\$283	\$639
Arkansas	\$1,281	\$984	\$363	\$841
Louisiana	\$2,251	\$869	\$628	\$955
New Mexico	\$1,562	\$264	\$185	\$246
Oklahoma	\$1,353	\$933	\$536	\$834
Texas	\$804	\$601	\$538	\$604
Colorado	\$1,850	\$1,034	\$357	\$853
Iowa	\$747	\$828	\$222	\$641
Kansas	\$1,386	\$538	\$126	\$290
Missouri	\$1,299	\$1,078	\$722	\$1,000
Montana	\$1,092	\$528	\$259	\$377
Nebraska	N/A	\$466	\$256	\$360
North Dakota	\$489	\$287	\$156	\$227
South Dakota	\$864	\$223	\$144	\$223
Utah	\$2,573	\$538	\$331	\$460
Wyoming	\$52	\$589	\$322	\$504
Alaska	\$1,343	\$631	\$454	\$696
Arizona	\$2,689	\$705	\$452	\$623
California	\$1,632	\$420	\$193	\$259
Guam	N/A	\$918	\$319	\$743
Hawaii	\$1,963	\$457	\$171	\$398
Idaho	\$1,328	\$512	\$259	\$537
Nevada	\$1,048	\$1,125	\$318	\$917
Oregon	\$341	\$937	\$662	\$785
Washington	\$480	\$435	\$259	\$383
US	\$1,194	\$637	\$241	\$449

TABLE 25: Food Stamp Program Claims Collected - FY 2005

STATE	Fraud Claims Collected	Household Error Collected	Agency Error Collected	Total Claims Collected
Connecticut	\$281,660	\$714,637	\$552,177	\$1,548,474
Maine	\$83,713	\$324,278	\$151,251	\$559,243
Massachusetts	\$190,219	\$805,823	\$72,612	\$1,068,653
New Hampshire	\$129,416	\$182,111	\$67,990	\$379,517
New York	\$1,232,683	\$2,783,341	\$1,269,163	\$5,285,187
Rhode Island	\$82,716	\$488,640	\$60,819	\$632,175
Vermont	\$123,228	\$186,739	\$39,584	\$349,551
Delaware	\$98,099	\$314,796	\$53,063	\$465,957
District of Columbia	\$40,923	\$819,927	\$44,201	\$905,051
Maryland	\$181,363	\$1,665,921	\$679,645	\$2,526,929
New Jersey	\$2,564,940	\$5,315,885	\$667,556	\$8,548,380
Pennsylvania	\$1,994,668	\$7,889,710	\$1,003,857	\$10,888,235
Virgin Islands	\$51,524	\$95,795	\$24,669	\$171,987
Virginia	\$1,068,374	\$1,016,244	\$429,305	\$2,513,923
West Virginia	\$795,572	\$1,821,016	\$536,653	\$3,153,240
Alabama	\$830,597	\$713,543	\$554,366	\$2,098,506
Florida	\$2,312,023	\$3,840,600	\$1,724,737	\$7,877,360
Georgia	\$4,854,503	\$882,424	\$1,278,438	\$7,015,365
Kentucky	\$845,267	\$652,631	\$463,865	\$1,961,763
Mississippi	\$2,768,281	\$793,776	\$465,396	\$4,027,453
North Carolina	\$2,303,532	\$1,937,406	\$854,770	\$5,095,708
South Carolina	\$1,033,048	\$4,004,371	\$861,695	\$5,899,114
Tennessee	\$3,640,360	\$3,170,410	\$460,177	\$7,270,947
Illinois	\$1,728,923	\$12,753,258	\$1,995,413	\$16,477,594
Indiana	\$958,460	\$1,834,778	\$288,652	\$3,081,889
Michigan	\$2,902,101	\$1,403,459	\$623,380	\$4,928,940
Minnesota	\$1,335,951	\$2,729,571	\$797,385	\$4,862,907
Ohio	\$2,226,462	\$3,981,112	\$1,264,007	\$7,471,581
Wisconsin	\$421,940	\$1,687,205	\$300,917	\$2,410,062
Arkansas	\$646,689	\$209,937	\$102,892	\$959,518
Louisiana	\$1,208,163	\$1,322,055	\$414,506	\$2,944,725
New Mexico	\$198,829	\$880,021	\$316,706	\$1,395,556
Oklahoma	\$339,316	\$267,453	\$167,460	\$774,229
Texas	\$5,769,992	\$11,684,194	\$3,232,749	\$20,686,935
Colorado	\$276,076	\$84,129	\$167,784	\$527,989
Iowa	\$164,959	\$349,112	\$8,269	\$522,339
Kansas	\$739,585	\$654,054	\$432,544	\$1,826,184
Missouri	\$1,451,809	\$1,563,510	\$500,159	\$3,515,478
Montana	\$229,424	\$198,101	\$244,336	\$671,861
Nebraska	\$143,784	\$516,496	\$284,792	\$945,072
North Dakota	\$64,419	\$188,159	\$106,268	\$358,846
South Dakota	\$111,401	\$222,856	\$42,413	\$376,670
Utah	\$327,885	\$441,145	\$291,376	\$1,060,405
Wyoming	\$58,694	\$58,983	\$18,954	\$136,631
Alaska	\$113,776	\$133,146	\$81,153	\$328,075
Arizona	\$227,594	\$1,661,599	\$800,415	\$2,689,607
California	\$6,554,217	\$15,998,062	\$13,931,800	\$36,484,078
Guam	\$53,829	\$21,527	\$14,091	\$89,447
Hawaii	\$471,916	\$1,015,515	\$332,573	\$1,820,004
Idaho	\$214,965	\$219,756	\$115,018	\$549,739
Nevada	\$169,773	\$225,063	\$52,400	\$447,236
Oregon	\$882,018	\$3,363,191	\$682,556	\$4,927,765
Washington	\$397,112	\$2,472,934	\$366,677	\$3,236,724
US	\$57,896,766	\$108,560,402	\$40,293,635	\$206,750,803

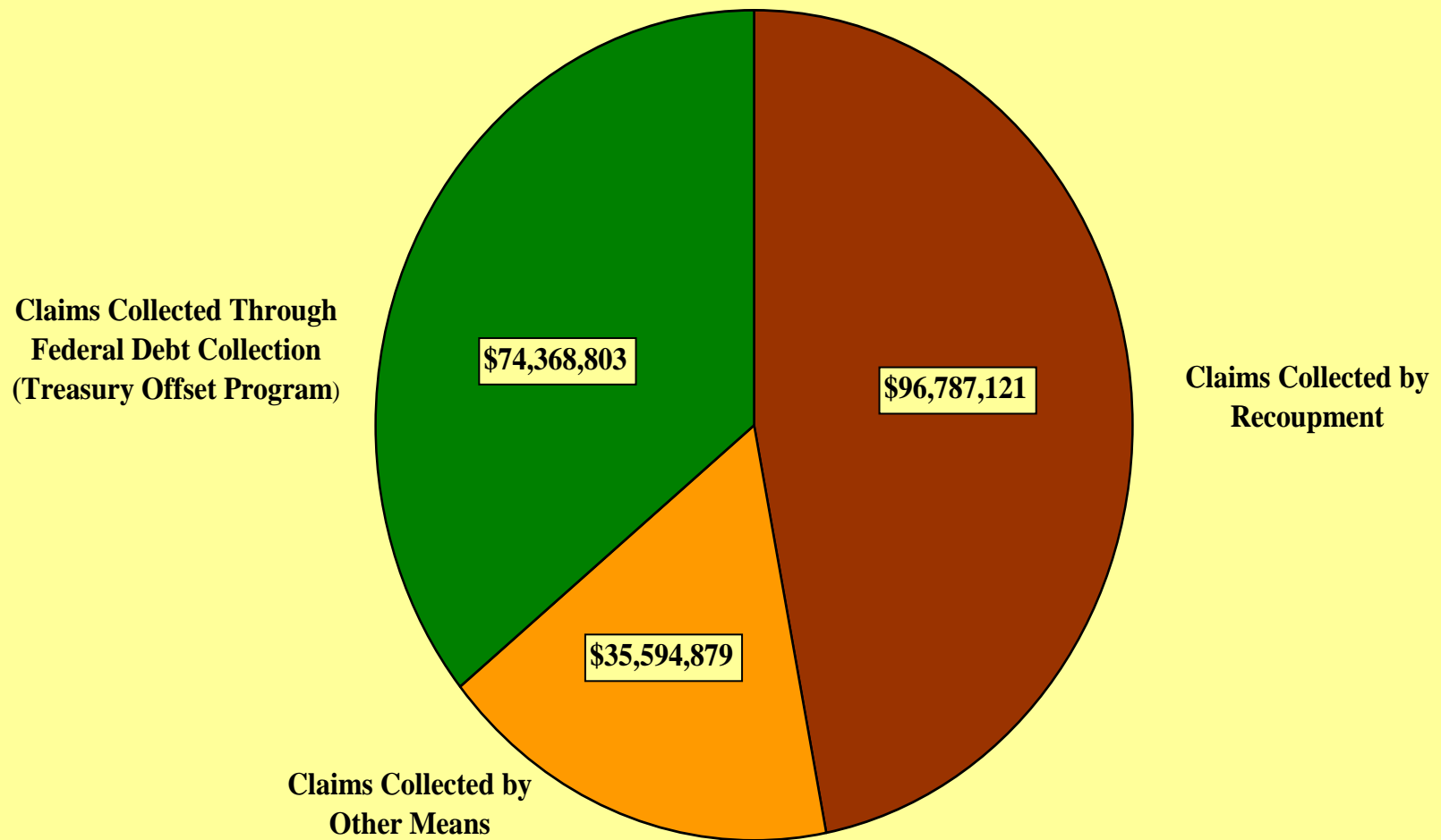
TABLE 26: Food Stamp Program Recipient Claims Recouped - FY 2005

STATE	Fraud Claims Recouped	Household Error Recouped	Agency Error Recouped	Total Claims Recouped
Connecticut	\$83,154	\$349,593	\$321,657	\$754,403
Maine	\$49,805	\$180,247	\$84,074	\$314,126
Massachusetts	\$46,544	\$262,541	\$37,319	\$346,404
New Hampshire	\$40,489	\$73,351	\$35,892	\$149,731
New York	\$736,577	\$2,742,978	\$1,166,831	\$4,646,386
Rhode Island	\$21,508	\$267,487	\$36,644	\$325,639
Vermont	\$49,493	\$90,137	\$17,996	\$157,626
Delaware	\$26,425	\$125,238	\$20,737	\$172,400
District of Columbia	\$7,163	\$362,421	\$19,692	\$389,276
Maryland	\$65,529	\$612,098	\$296,561	\$974,188
New Jersey	\$809,252	\$1,636,854	\$204,778	\$2,650,884
Pennsylvania	\$61,281	\$4,339,060	\$629,895	\$5,030,236
Virgin Islands	\$44,665	\$40,500	\$11,542	\$96,707
Virginia	\$300,039	\$361,885	\$232,473	\$894,397
West Virginia	\$268,663	\$954,227	\$312,422	\$1,535,312
Alabama	\$303,650	\$447,566	\$393,526	\$1,144,742
Florida	\$1,170,233	\$2,384,893	\$1,258,351	\$4,813,477
Georgia	\$2,290,107	\$395,661	\$761,983	\$3,447,751
Kentucky	\$227,487	\$312,969	\$255,265	\$795,721
Mississippi	\$1,712,974	\$574,928	\$327,139	\$2,615,041
North Carolina	\$640,051	\$787,756	\$450,085	\$1,877,893
South Carolina	\$584,865	\$2,717,412	\$548,735	\$3,851,012
Tennessee	\$1,765,731	\$1,892,430	\$281,808	\$3,939,969
Illinois	\$431,149	\$5,321,993	\$1,039,344	\$6,792,487
Indiana	\$414,596	\$950,036	\$141,187	\$1,505,819
Michigan	\$1,458,042	\$788,431	\$332,224	\$2,578,697
Minnesota	\$328,550	\$1,151,156	\$442,666	\$1,922,372
Ohio	\$850,105	\$2,361,109	\$729,872	\$3,941,086
Wisconsin	\$113,057	\$720,456	\$144,092	\$977,605
Arkansas	\$174,224	\$66,257	\$49,431	\$289,912
Louisiana	\$501,349	\$813,887	\$267,116	\$1,582,352
New Mexico	\$67,955	\$519,976	\$208,022	\$795,953
Oklahoma	\$156,484	\$205,786	\$135,125	\$497,395
Texas	\$1,134,644	\$3,351,361	\$1,085,566	\$5,571,570
Colorado	\$0	\$0	\$0	\$0
Iowa	\$50,164	\$141,471	\$0	\$191,635
Kansas	\$239,747	\$277,506	\$251,694	\$768,947
Missouri	\$608,053	\$869,703	\$269,821	\$1,747,577
Montana	\$76,159	\$91,990	\$157,749	\$325,898
Nebraska	\$41,514	\$254,003	\$165,705	\$461,221
North Dakota	\$24,824	\$95,779	\$68,826	\$189,429
South Dakota	\$45,146	\$166,670	\$31,511	\$243,327
Utah	\$106,841	\$195,292	\$135,208	\$437,341
Wyoming	\$17,112	\$19,568	\$8,079	\$44,759
Alaska	\$53,341	\$61,819	\$68,317	\$183,477
Arizona	\$55,887	\$810,214	\$425,191	\$1,291,292
California	\$1,258,604	\$8,317,460	\$9,403,362	\$18,979,425
Guam	\$23,830	\$16,051	\$9,922	\$49,803
Hawaii	\$169,852	\$646,862	\$230,622	\$1,047,336
Idaho	\$57,721	\$82,460	\$60,200	\$200,381
Nevada	\$67,066	\$82,774	\$27,045	\$176,885
Oregon	\$254,837	\$1,219,320	\$299,566	\$1,773,723
Washington	\$115,368	\$1,164,258	\$16,468	\$1,296,094
US	\$20,201,905	\$52,675,881	\$23,909,335	\$96,787,121

TABLE 27: Food Stamp Program Recipient Claims Collected - FY 2005

STATE	Total Claims Recouped	Other State Means of Collection	Federal Debt Collection	Total Claim Collected
Connecticut	\$754,403	\$244,124	\$549,947	\$1,548,474
Maine	\$314,126	\$245,019	\$97	\$559,243
Massachusetts	\$346,404	\$320,537	\$401,712	\$1,068,653
New Hampshire	\$149,731	\$99,037	\$130,749	\$379,517
New York	\$4,646,386	\$638,801	\$0	\$5,285,187
Rhode Island	\$325,639	\$95,700	\$210,836	\$632,175
Vermont	\$157,626	\$20,592	\$171,334	\$349,551
Delaware	\$172,400	\$77,418	\$216,139	\$465,957
District of Columbia	\$389,276	\$27,490	\$488,285	\$905,051
Maryland	\$974,188	\$381,313	\$1,171,428	\$2,526,929
New Jersey	\$2,650,884	\$1,117,214	\$4,780,282	\$8,548,380
Pennsylvania	\$5,030,236	\$893,987	\$4,964,012	\$10,888,235
Virgin Islands	\$96,707	\$33,587	\$41,693	\$171,987
Virginia	\$894,397	\$837,346	\$782,180	\$2,513,923
West Virginia	\$1,535,312	\$464,624	\$1,153,304	\$3,153,240
Alabama	\$1,144,742	\$266,808	\$686,955	\$2,098,506
Florida	\$4,813,477	\$1,601,369	\$1,462,513	\$7,877,360
Georgia	\$3,447,751	\$1,025,929	\$2,541,685	\$7,015,365
Kentucky	\$795,721	\$516,097	\$649,945	\$1,961,763
Mississippi	\$2,615,041	\$208,100	\$1,204,312	\$4,027,453
North Carolina	\$1,877,893	\$935,040	\$2,282,775	\$5,095,708
South Carolina	\$3,851,012	\$1,185,363	\$862,739	\$5,899,114
Tennessee	\$3,939,969	\$844,268	\$2,486,710	\$7,270,947
Illinois	\$6,792,487	\$1,157,635	\$8,527,472	\$16,477,594
Indiana	\$1,505,819	\$365,123	\$1,210,948	\$3,081,889
Michigan	\$2,578,697	\$1,289,257	\$1,060,986	\$4,928,940
Minnesota	\$1,922,372	\$972,076	\$1,968,459	\$4,862,907
Ohio	\$3,941,086	\$961,777	\$2,568,717	\$7,471,581
Wisconsin	\$977,605	\$321,104	\$1,111,353	\$2,410,062
Arkansas	\$289,912	\$149,753	\$519,852	\$959,518
Louisiana	\$1,582,352	\$267,778	\$1,094,595	\$2,944,725
New Mexico	\$795,953	\$143,366	\$456,237	\$1,395,556
Oklahoma	\$497,395	\$272,938	\$3,897	\$774,229
Texas	\$5,571,570	\$3,513,551	\$11,601,814	\$20,686,935
Colorado	\$0	\$3,560	\$524,429	\$527,989
Iowa	\$191,635	\$142,488	\$188,217	\$522,339
Kansas	\$768,947	\$153,376	\$903,862	\$1,826,184
Missouri	\$1,747,577	\$348,262	\$1,419,639	\$3,515,478
Montana	\$325,898	\$113,224	\$232,738	\$671,861
Nebraska	\$461,221	\$157,755	\$326,096	\$945,072
North Dakota	\$189,429	\$68,115	\$101,302	\$358,846
South Dakota	\$243,327	\$65,055	\$68,289	\$376,670
Utah	\$437,341	\$243,694	\$379,370	\$1,060,405
Wyoming	\$44,759	\$44,064	\$47,808	\$136,631
Alaska	\$183,477	\$114,770	\$29,828	\$328,075
Arizona	\$1,291,292	\$476,268	\$922,048	\$2,689,607
California	\$18,979,425	\$8,992,042	\$8,512,611	\$36,484,078
Guam	\$49,803	\$38,583	\$1,061	\$89,447
Hawaii	\$1,047,336	\$561,049	\$211,619	\$1,820,004
Idaho	\$200,381	\$182,287	\$167,070	\$549,739
Nevada	\$176,885	\$100,696	\$169,655	\$447,236
Oregon	\$1,773,723	\$1,882,364	\$1,271,678	\$4,927,765
Washington	\$1,296,094	\$439,471	\$1,501,159	\$3,236,724
US	\$96,787,121	\$35,594,879	\$74,368,803	\$206,750,803

RECIPIENT CLAIMS COLLECTED BY COLLECTION METHODOLOGY FY 2005



FY 2005 DISASTER SEASON



Hurricane Katrina

The Hurricane Season of 2005 was the busiest one ever recorded with 27 named storms. On August 29, 2005, Hurricane Katrina landed as one of the most devastating storms in history, inflicting a terrible toll, leading to the loss of many lives across the Gulf Coast and forcing the largest evacuation in American history. This hurricane was followed by Hurricanes Rita in September and Wilma in October 2005. This annual report is normally limited to the fiscal year. However, the disaster response to these devastating storms would carry over into FY 2006 since FSP benefits are paid monthly based on need. In this special section devoted to 2005 disasters we are able to provide a fuller if not complete picture of the Katrina response in particular by providing early and preliminary FY 2006 data.

There was an unprecedented and extensive Federal and State response by the FSP to Katrina victims. FNS led the Federal nutrition response to the hurricanes that severely impacted the Gulf Coast States by promptly implementing the FSP's first National Evacuee Policies under Hurricane Katrina. This policy enabled State agencies that were not affected by Hurricane Katrina or that were not administering a disaster program to immediately issue disaster benefits to individuals and families who evacuated to other States. FNS approved over 70 waivers to affected States to issue benefits under the disaster authority for all three disasters.

Affected State agencies played a vital part, stepping up to assist hurricane victims on site or at special processing centers. While FNS pays the cost of Disaster Food Stamp Program (DFSP) benefits, it is the affected State agencies that process the disaster cases in their offices and on site and that issue the disaster benefits. In FY 2005, FNS issued \$258 million in disaster food stamps to affected households. Of this figure, \$238 million was issued under Hurricane Katrina alone. The nutrition assistance need that resulted from Katrina continued into FY 2006. By November 2005, over 1.2 million households (including Hurricane Katrina evacuees) in 17 States had received \$577 million in benefits as a result of Hurricane Katrina. However, while these numbers are national data, most of the increase was concentrated in the Gulf Coast States that bore the brunt of Katrina. The affected Gulf Coast States (mentioned below) experienced large jumps in their caseload in a single month. In the month of September alone, Mississippi's caseload increased by 127 percent, Louisiana's increased by 115 percent, Alabama had a 38 percent increase, and Texas had a 13 percent gain. FNS salutes these four States and their caseworkers for processing the large number of disaster cases in a single month. In the following chart on page 49, we also wish to document and recognize that many more States also helped out by taking Katrina evacuees from the affected States.



Disaster Food Stamp Program Costs (\$ millions)

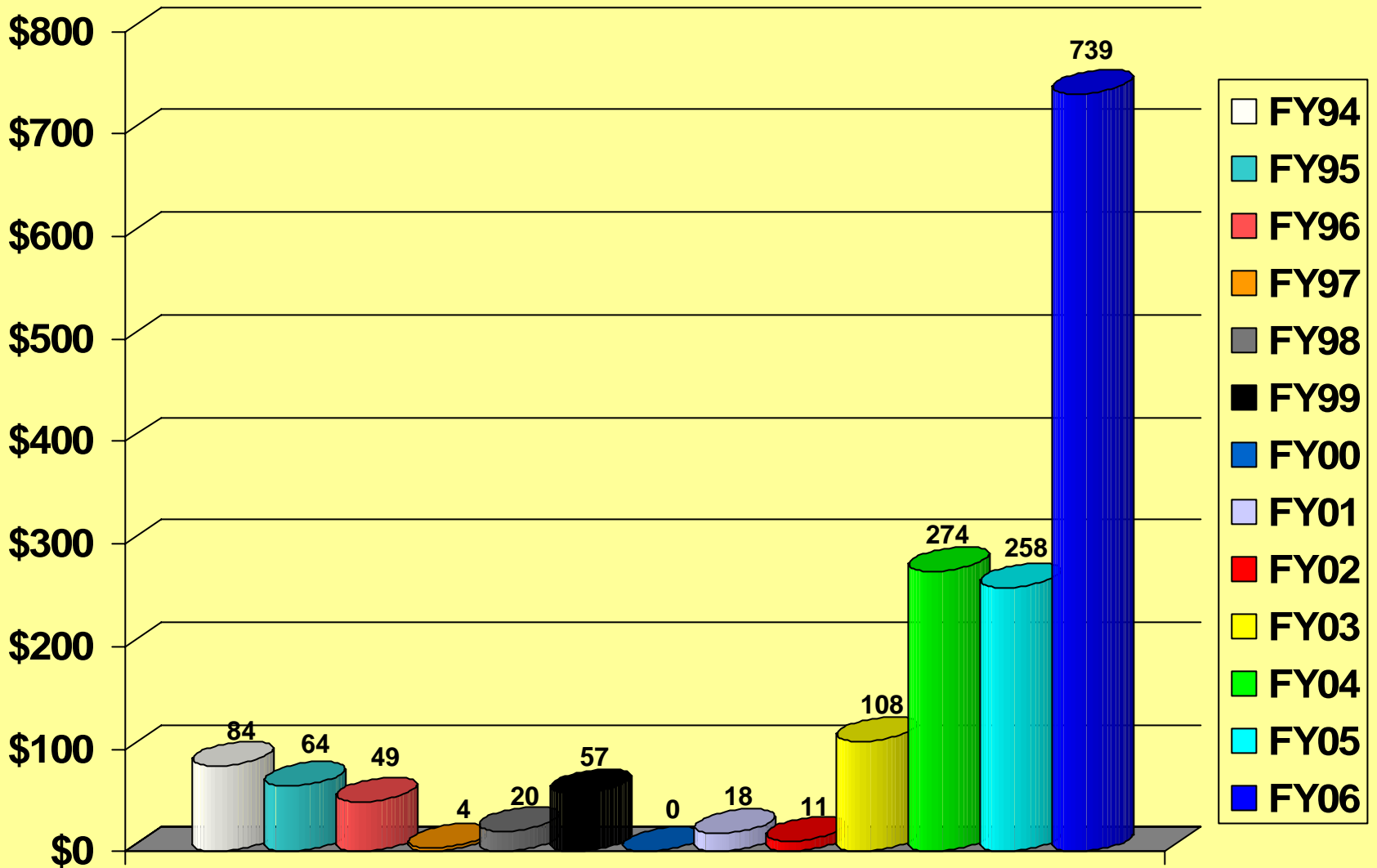


TABLE 28: Food Stamp Program - Hurricane Katrina's Impact in Disaster States

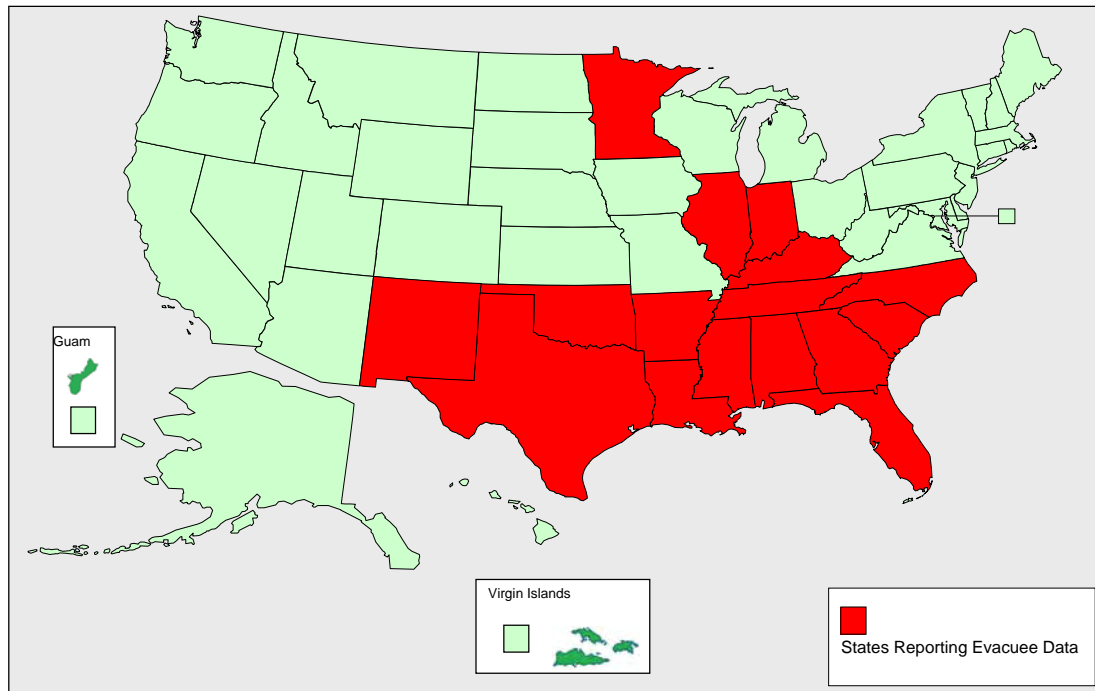
State	<u>Before</u> <u>Katrina</u> Households Aug 2005	<u>After</u> <u>Katrina</u> Households Sep 2005	Percent Change Aug - Sep
<u>Household Participation</u>			
Alabama	217,016	298,527	38%
Louisiana	294,454	631,644	115%
Mississippi	164,882	374,393	127%
Texas	937,045	1,057,210	13%
<u>Benefits</u>			
Alabama	\$48,318,283	\$65,201,011	35%
Louisiana	\$70,825,748	\$206,205,379	191%
Mississippi	\$34,288,251	\$99,038,376	189%
Texas	\$219,334,317	\$254,498,296	16%
<u>Average Benefit per Household</u>			
Alabama	\$222.65	\$218.41	-2%
Louisiana	\$240.53	\$326.46	36%
Mississippi	\$207.96	\$264.53	27%
Texas	\$234.07	\$240.73	3%



TABLE 29: Food Stamp Program - Hurricane Katrina's Broad Impact -- Evacuees
 Period: September - November 2005

State	Type	Disaster Households	Disaster Benefits	State	Type	Disaster Households	Disaster Benefits
Alabama	Disaster FSP	86,810	\$25,505,725	Minnesota	Evacuee	391	\$116,826
Arkansas	Evacuee	8,475	\$4,452,499	Mississippi	Disaster FSP	410,930	\$134,983,005
Florida	Evacuee	10,741	\$2,890,467	New Mexico	Evacuee	256	\$218,625
Georgia	Evacuee	19,469	\$4,633,068	North Carolina	Evacuee	2,394	\$1,205,055
Illinois	Evacuee	3,179	\$2,094,664	Oklahoma	Evacuee	1,498	\$383,083
Indiana	Evacuee	765	\$608,904	South Carolina	Evacuee	1,632	\$432,904
Kentucky	Evacuee	1,190	\$216,757	Tennessee	Evacuee	7,158	\$715,800
Louisiana	Disaster FSP	543,355	\$306,781,053	Texas	Disaster FSP	104,153	\$91,342,890
				Wisconsin	Evacuee	507	\$379,095
Total						1,202,903	\$576,960,420

NOTE: State reporting of evacuees was voluntary. Other States also took in and served Hurricane Katrina evacuees but did not report the evacuee data.



RANKINGS OF PARTICIPATION AND ISSUANCE



TABLE 30: Food Stamp Program Participation and Issuance - Ranked by Persons - FY 2005

Rank	STATE	Persons Participating (Monthly)	Households Participating (Monthly)	Issuance
1	Texas	2,441,975	941,050	\$2,659,288,088
2	California	1,992,024	785,682	\$2,312,527,278
3	New York	1,754,861	915,703	\$2,135,869,438
4	Florida	1,381,804	657,576	\$1,597,912,047
5	Illinois	1,158,271	520,350	\$1,400,091,866
6	Michigan	1,047,594	469,976	\$1,098,817,352
7	Pennsylvania	1,042,809	471,960	\$1,104,711,263
8	Ohio	1,007,172	448,524	\$1,155,257,476
9	Georgia	921,427	375,739	\$1,047,842,395
10	Tennessee	849,703	374,011	\$941,638,149
11	Louisiana	807,896	318,126	\$978,765,504
12	North Carolina	799,747	343,397	\$856,161,978
13	Missouri	766,425	298,380	\$735,757,569
14	Kentucky	570,277	245,707	\$611,490,522
15	Alabama	558,596	222,132	\$616,090,009
16	Indiana	556,285	240,045	\$626,608,340
17	Arizona	550,291	220,498	\$633,808,912
18	South Carolina	521,125	219,503	\$565,811,046
19	Washington	508,472	250,788	\$539,048,283
20	Virginia	488,481	214,983	\$499,708,150
21	Mississippi	434,958	174,500	\$462,961,820
22	Oregon	429,358	218,297	\$455,943,437
23	Oklahoma	424,402	172,837	\$439,598,807
24	New Jersey	392,416	186,661	\$437,423,008
25	Arkansas	373,752	152,909	\$401,286,262
26	Massachusetts	368,122	176,121	\$363,033,709
27	Wisconsin	345,748	143,459	\$316,951,818
28	Maryland	288,943	131,556	\$320,133,493
29	West Virginia	262,442	114,038	\$258,050,316
30	Minnesota	259,937	124,398	\$274,996,874
31	Colorado	245,926	107,405	\$313,224,564
32	New Mexico	240,637	93,094	\$251,414,424
33	Iowa	206,696	89,655	\$219,761,007
34	Connecticut	204,146	107,492	\$223,198,180
35	Kansas	177,782	78,165	\$179,999,844
36	Maine	152,910	78,170	\$162,202,784
37	Utah	133,263	53,162	\$141,217,600
38	Nevada	121,707	54,877	\$128,901,489
39	Nebraska	117,415	49,948	\$119,523,412
40	Hawaii	93,548	47,309	\$155,898,096
41	Idaho	93,441	37,151	\$102,970,484
42	District of Columbia	88,799	44,362	\$103,295,526
43	Montana	80,870	34,573	\$89,231,197
44	Rhode Island	76,085	34,751	\$78,517,688
45	Delaware	61,586	26,052	\$65,229,058
46	South Dakota	56,095	22,483	\$61,477,144
47	Alaska	55,567	20,224	\$80,405,244
48	New Hampshire	52,310	25,198	\$50,569,118
49	Vermont	45,218	22,355	\$44,999,412
50	North Dakota	42,204	18,927	\$44,674,426
51	Guam	27,277	8,066	\$53,633,228
52	Wyoming	25,482	10,422	\$26,976,298
53	Virgin Islands	13,550	4,633	\$20,817,269
	US	25,717,830	11,197,377	\$28,565,722,701

FSP Program Participation

Persons Participating

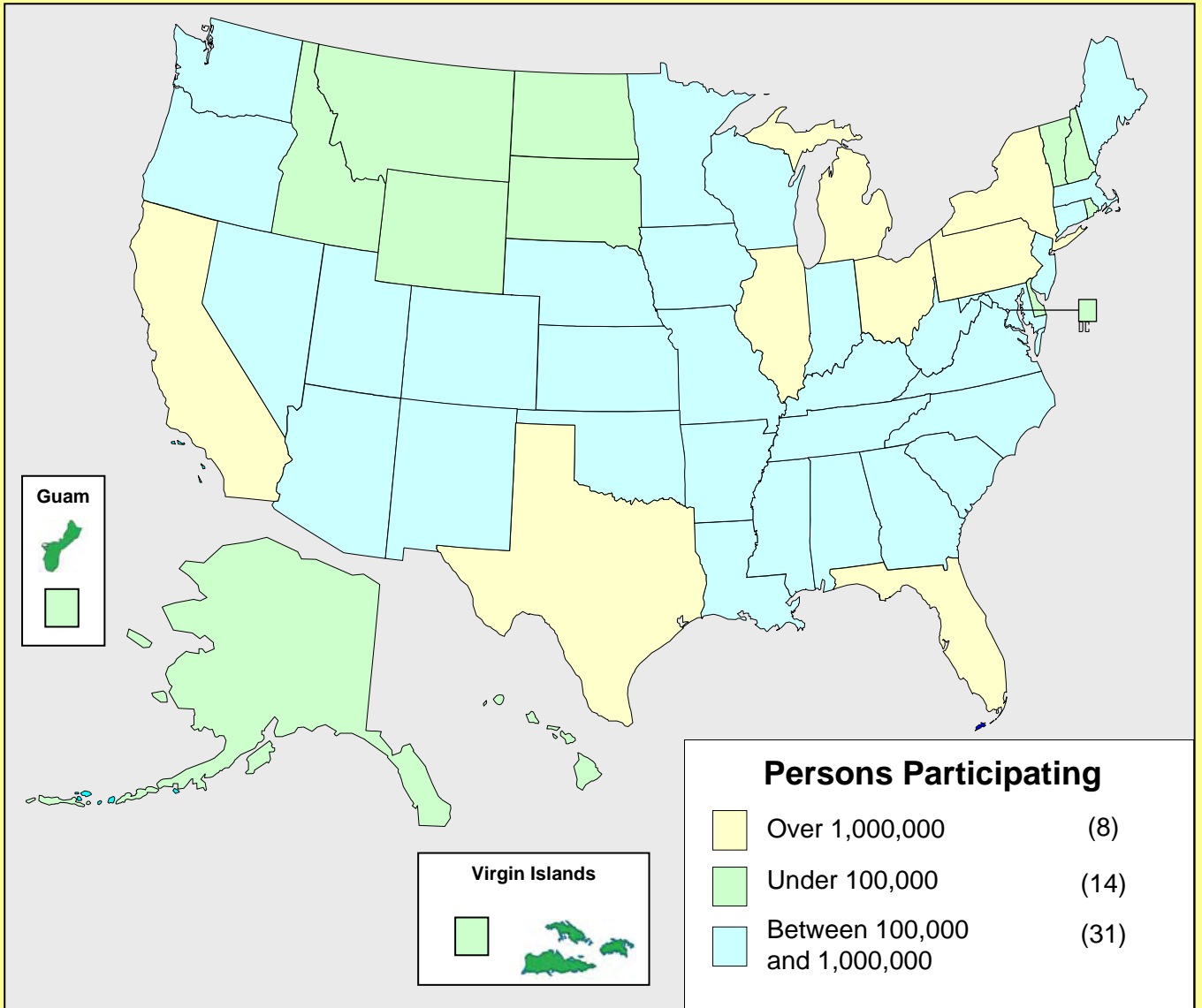


TABLE 31: Food Stamp Program Participation and Issuance - Ranked by Households - FY 2005

Rank	STATE	Persons Participating (Monthly)	Households Participating (Monthly)	Issuance
1	Texas	2,441,975	941,050	\$2,659,288,088
2	New York	1,754,861	915,703	\$2,135,869,438
3	California	1,992,024	785,682	\$2,312,527,278
4	Florida	1,381,804	657,576	\$1,597,912,047
5	Illinois	1,158,271	520,350	\$1,400,091,866
6	Pennsylvania	1,042,809	471,960	\$1,104,711,263
7	Michigan	1,047,594	469,976	\$1,098,817,352
8	Ohio	1,007,172	448,524	\$1,155,257,476
9	Georgia	921,427	375,739	\$1,047,842,395
10	Tennessee	849,703	374,011	\$941,638,149
11	North Carolina	799,747	343,397	\$856,161,978
12	Louisiana	807,896	318,126	\$978,765,504
13	Missouri	766,425	298,380	\$735,757,569
14	Washington	508,472	250,788	\$539,048,283
15	Kentucky	570,277	245,707	\$611,490,522
16	Indiana	556,285	240,045	\$626,608,340
17	Alabama	558,596	222,132	\$616,090,009
18	Arizona	550,291	220,498	\$633,808,912
19	South Carolina	521,125	219,503	\$565,811,046
20	Oregon	429,358	218,297	\$455,943,437
21	Virginia	488,481	214,983	\$499,708,150
22	New Jersey	392,416	186,661	\$437,423,008
23	Massachusetts	368,122	176,121	\$363,033,709
24	Mississippi	434,958	174,500	\$462,961,820
25	Oklahoma	424,402	172,837	\$439,598,807
26	Arkansas	373,752	152,909	\$401,286,262
27	Wisconsin	345,748	143,459	\$316,951,818
28	Maryland	288,943	131,556	\$320,133,493
29	Minnesota	259,937	124,398	\$274,996,874
30	West Virginia	262,442	114,038	\$258,050,316
31	Connecticut	204,146	107,492	\$223,198,180
32	Colorado	245,926	107,405	\$313,224,564
33	New Mexico	240,637	93,094	\$251,414,424
34	Iowa	206,696	89,655	\$219,761,007
35	Maine	152,910	78,170	\$162,202,784
36	Kansas	177,782	78,165	\$179,999,844
37	Nevada	121,707	54,877	\$128,901,489
38	Utah	133,263	53,162	\$141,217,600
39	Nebraska	117,415	49,948	\$119,523,412
40	Hawaii	93,548	47,309	\$155,898,096
41	District of Columbia	88,799	44,362	\$103,295,526
42	Idaho	93,441	37,151	\$102,970,484
43	Rhode Island	76,085	34,751	\$78,517,688
44	Montana	80,870	34,573	\$89,231,197
45	Delaware	61,586	26,052	\$65,229,058
46	New Hampshire	52,310	25,198	\$50,569,118
47	South Dakota	56,095	22,483	\$61,477,144
48	Vermont	45,218	22,355	\$44,999,412
49	Alaska	55,567	20,224	\$80,405,244
50	North Dakota	42,204	18,927	\$44,674,426
51	Wyoming	25,482	10,422	\$26,976,298
52	Guam	27,277	8,066	\$53,633,228
53	Virgin Islands	13,550	4,633	\$20,817,269
	US	25,717,830	11,197,377	\$28,565,722,701

TABLE 32: Food Stamp Program Participation and Issuance - Ranked by Issuance - FY 2005

Rank	STATE	Persons Participating (Monthly)	Households Participating (Monthly)	Issuance
1	Texas	2,441,975	941,050	\$2,659,288,088
2	California	1,992,024	785,682	\$2,312,527,278
3	New York	1,754,861	915,703	\$2,135,869,438
4	Florida	1,381,804	657,576	\$1,597,912,047
5	Illinois	1,158,271	520,350	\$1,400,091,866
6	Ohio	1,007,172	448,524	\$1,155,257,476
7	Pennsylvania	1,042,809	471,960	\$1,104,711,263
8	Michigan	1,047,594	469,976	\$1,098,817,352
9	Georgia	921,427	375,739	\$1,047,842,395
10	Louisiana	807,896	318,126	\$978,765,504
11	Tennessee	849,703	374,011	\$941,638,149
12	North Carolina	799,747	343,397	\$856,161,978
13	Missouri	766,425	298,380	\$735,757,569
14	Arizona	550,291	220,498	\$633,808,912
15	Indiana	556,285	240,045	\$626,608,340
16	Alabama	558,596	222,132	\$616,090,009
17	Kentucky	570,277	245,707	\$611,490,522
18	South Carolina	521,125	219,503	\$565,811,046
19	Washington	508,472	250,788	\$539,048,283
20	Virginia	488,481	214,983	\$499,708,150
21	Mississippi	434,958	174,500	\$462,961,820
22	Oregon	429,358	218,297	\$455,943,437
23	Oklahoma	424,402	172,837	\$439,598,807
24	New Jersey	392,416	186,661	\$437,423,008
25	Arkansas	373,752	152,909	\$401,286,262
26	Massachusetts	368,122	176,121	\$363,033,709
27	Maryland	288,943	131,556	\$320,133,493
28	Wisconsin	345,748	143,459	\$316,951,818
29	Colorado	245,926	107,405	\$313,224,564
30	Minnesota	259,937	124,398	\$274,996,874
31	West Virginia	262,442	114,038	\$258,050,316
32	New Mexico	240,637	93,094	\$251,414,424
33	Connecticut	204,146	107,492	\$223,198,180
34	Iowa	206,696	89,655	\$219,761,007
35	Kansas	177,782	78,165	\$179,999,844
36	Maine	152,910	78,170	\$162,202,784
37	Hawaii	93,548	47,309	\$155,898,096
38	Utah	133,263	53,162	\$141,217,600
39	Nevada	121,707	54,877	\$128,901,489
40	Nebraska	117,415	49,948	\$119,523,412
41	District of Columbia	88,799	44,362	\$103,295,526
42	Idaho	93,441	37,151	\$102,970,484
43	Montana	80,870	34,573	\$89,231,197
44	Alaska	55,567	20,224	\$80,405,244
45	Rhode Island	76,085	34,751	\$78,517,688
46	Delaware	61,586	26,052	\$65,229,058
47	South Dakota	56,095	22,483	\$61,477,144
48	Guam	27,277	8,066	\$53,633,228
49	New Hampshire	52,310	25,198	\$50,569,118
50	Vermont	45,218	22,355	\$44,999,412
51	North Dakota	42,204	18,927	\$44,674,426
52	Wyoming	25,482	10,422	\$26,976,298
53	Virgin Islands	13,550	4,633	\$20,817,269
	US	25,717,830	11,197,377	\$28,565,722,701

TABLE 33: Food Stamp Program Average Monthly Benefit - Ranked by Benefit per Person - FY 2005

Rank	STATE	Average Monthly Benefit Per Person	Average Monthly Benefit Per Household
1	Guam	\$163.85	\$554.14
2	Hawaii	\$138.88	\$274.61
3	Virgin Islands	\$128.03	\$374.42
4	Alaska	\$120.58	\$331.31
5	Colorado	\$106.14	\$243.02
6	New York	\$101.43	\$194.37
7	Louisiana	\$100.96	\$256.39
8	Illinois	\$100.73	\$224.22
9	District of Columbia	\$96.94	\$194.04
10	California	\$96.74	\$245.28
11	Florida	\$96.37	\$202.50
12	Arizona	\$95.98	\$239.54
13	Ohio	\$95.59	\$214.64
14	Georgia	\$94.77	\$232.40
15	Indiana	\$93.87	\$217.53
16	New Jersey	\$92.89	\$195.28
17	Tennessee	\$92.35	\$209.81
18	Maryland	\$92.33	\$202.79
19	Montana	\$91.95	\$215.08
20	Alabama	\$91.91	\$231.13
21	Idaho	\$91.83	\$230.98
22	South Dakota	\$91.33	\$227.87
23	Connecticut	\$91.11	\$173.03
24	Texas	\$90.75	\$235.49
25	South Carolina	\$90.48	\$214.81
26	Arkansas	\$89.47	\$218.70
27	Kentucky	\$89.36	\$207.39
28	North Carolina	\$89.21	\$207.77
29	Mississippi	\$88.70	\$221.09
30	Iowa	\$88.60	\$204.27
31	Oregon	\$88.49	\$174.05
32	Maine	\$88.40	\$172.92
33	Washington	\$88.34	\$179.12
34	Utah	\$88.31	\$221.37
35	Pennsylvania	\$88.28	\$195.06
36	Delaware	\$88.26	\$208.65
37	Nevada	\$88.26	\$195.74
38	Wyoming	\$88.22	\$215.69
39	North Dakota	\$88.21	\$196.70
40	Minnesota	\$88.16	\$184.22
41	Michigan	\$87.41	\$194.84
42	New Mexico	\$87.07	\$225.05
43	Oklahoma	\$86.32	\$211.95
44	Rhode Island	\$86.00	\$188.28
45	Virginia	\$85.25	\$193.70
46	Nebraska	\$84.83	\$199.41
47	Kansas	\$84.37	\$191.90
48	Vermont	\$82.93	\$167.74
49	Massachusetts	\$82.18	\$171.77
50	West Virginia	\$81.94	\$188.57
51	New Hampshire	\$80.56	\$167.24
52	Missouri	\$80.00	\$205.49
53	Wisconsin	\$76.39	\$184.11
	US	\$92.56	\$212.59

TABLE 34: Food Stamp Program Average Monthly Benefit - Ranked by Benefit per Household - FY 2005

Rank	STATE	Average Monthly Benefit Per Person	Average Monthly Benefit Per Household
1	Guam	\$163.85	\$554.14
2	Virgin Islands	\$128.03	\$374.42
3	Alaska	\$120.58	\$331.31
4	Hawaii	\$138.88	\$274.61
5	Louisiana	\$100.96	\$256.39
6	California	\$96.74	\$245.28
7	Colorado	\$106.14	\$243.02
8	Arizona	\$95.98	\$239.54
9	Texas	\$90.75	\$235.49
10	Georgia	\$94.77	\$232.40
11	Alabama	\$91.91	\$231.13
12	Idaho	\$91.83	\$230.98
13	South Dakota	\$91.33	\$227.87
14	New Mexico	\$87.07	\$225.05
15	Illinois	\$100.73	\$224.22
16	Utah	\$88.31	\$221.37
17	Mississippi	\$88.70	\$221.09
18	Arkansas	\$89.47	\$218.70
19	Indiana	\$93.87	\$217.53
20	Wyoming	\$88.22	\$215.69
21	Montana	\$91.95	\$215.08
22	South Carolina	\$90.48	\$214.81
23	Ohio	\$95.59	\$214.64
24	Oklahoma	\$86.32	\$211.95
25	Tennessee	\$92.35	\$209.81
26	Delaware	\$88.26	\$208.65
27	North Carolina	\$89.21	\$207.77
28	Kentucky	\$89.36	\$207.39
29	Missouri	\$80.00	\$205.49
30	Iowa	\$88.60	\$204.27
31	Maryland	\$92.33	\$202.79
32	Florida	\$96.37	\$202.50
33	Nebraska	\$84.83	\$199.41
34	North Dakota	\$88.21	\$196.70
35	Nevada	\$88.26	\$195.74
36	New Jersey	\$92.89	\$195.28
37	Pennsylvania	\$88.28	\$195.06
38	Michigan	\$87.41	\$194.84
39	New York	\$101.43	\$194.37
40	District of Columbia	\$96.94	\$194.04
41	Virginia	\$85.25	\$193.70
42	Kansas	\$84.37	\$191.90
43	West Virginia	\$81.94	\$188.57
44	Rhode Island	\$86.00	\$188.28
45	Minnesota	\$88.16	\$184.22
46	Wisconsin	\$76.39	\$184.11
47	Washington	\$88.34	\$179.12
48	Oregon	\$88.49	\$174.05
49	Connecticut	\$91.11	\$173.03
50	Maine	\$88.40	\$172.92
51	Massachusetts	\$82.18	\$171.77
52	Vermont	\$82.93	\$167.74
53	New Hampshire	\$80.56	\$167.24
	US	\$92.56	\$212.59

COMPARISONS TO PRIOR YEAR



TABLE 35: Food Stamp Program Participation - Persons - FY 2003 - FY 2005

STATE	Persons Participating (Monthly) FY 2003	Persons Participating (Monthly) FY 2004	Persons Participating (Monthly) FY 2005	Percent Change FY 2004 - FY 2005
Connecticut	180,512	195,980	204,146	4.17%
Maine	132,582	141,929	152,910	7.74%
Massachusetts	292,200	334,939	368,122	9.91%
New Hampshire	44,783	48,449	52,310	7.97%
New York	1,435,986	1,598,143	1,754,861	9.81%
Rhode Island	74,068	77,528	76,085	-1.86%
Vermont	41,333	42,862	45,218	5.50%
Delaware	46,027	55,642	61,586	10.68%
District of Columbia	81,777	88,655	88,799	0.16%
Maryland	252,383	273,872	288,943	5.50%
New Jersey	339,047	368,695	392,416	6.43%
Pennsylvania	822,696	960,941	1,042,809	8.52%
Virgin Islands	12,938	13,372	13,550	1.32%
Virginia	392,515	485,877	488,481	0.54%
West Virginia	246,890	255,936	262,442	2.54%
Alabama	472,066	497,591	558,596	12.26%
Florida	1,041,315	1,202,227	1,381,804	14.94%
Georgia	750,208	867,148	921,427	6.26%
Kentucky	502,677	544,744	570,277	4.69%
Mississippi	355,783	376,864	434,958	15.42%
North Carolina	649,426	747,274	799,747	7.02%
South Carolina	450,556	497,218	521,125	4.81%
Tennessee	728,305	806,490	849,703	5.36%
Illinois	953,929	1,069,596	1,158,271	8.29%
Indiana	470,183	526,324	556,285	5.69%
Michigan	837,629	943,713	1,047,594	11.01%
Minnesota	234,631	247,465	259,937	5.04%
Ohio	855,401	945,435	1,007,172	6.53%
Wisconsin	296,717	324,047	345,748	6.70%
Arkansas	310,359	346,441	373,752	7.88%
Louisiana	655,300	705,700	807,896	14.48%
New Mexico	194,795	222,716	240,637	8.05%
Oklahoma	380,299	411,840	424,402	3.05%
Texas	1,872,473	2,258,951	2,441,975	8.10%
Colorado	208,053	241,780	245,926	1.71%
Iowa	153,816	179,179	206,696	15.36%
Kansas	160,705	169,528	177,782	4.87%
Missouri	591,532	699,616	766,425	9.55%
Montana	71,320	77,478	80,870	4.38%
Nebraska	99,243	113,900	117,415	3.09%
North Dakota	39,663	41,421	42,204	1.89%
South Dakota	51,176	53,459	56,095	4.93%
Utah	105,630	123,411	133,263	7.98%
Wyoming	25,306	25,649	25,482	-0.65%
Alaska	50,687	49,323	55,567	12.66%
Arizona	466,151	529,556	550,291	3.92%
California	1,708,522	1,859,486	1,992,024	7.13%
Guam	23,934	25,725	27,277	6.03%
Hawaii	100,382	98,589	93,548	-5.11%
Idaho	81,524	91,395	93,441	2.24%
Nevada	111,352	120,275	121,707	1.19%
Oregon	398,377	419,736	429,358	2.29%
Washington	403,992	453,497	508,472	12.12%
US	21,259,152	23,857,607	25,717,830	7.80%

TABLE 36: Food Stamp Program Participation - Households - FY 2003 - FY 2005

STATE	Households Participating (Monthly) FY 2003	Households Participating (Monthly) FY 2004	Households Participating (Monthly) FY 2005	Percent Change FY 2004 - FY 2005
Connecticut	94,147	102,175	107,492	5.20%
Maine	65,760	72,197	78,170	8.27%
Massachusetts	135,195	154,543	176,121	13.96%
New Hampshire	22,150	23,625	25,198	6.66%
New York	724,420	802,051	915,703	14.17%
Rhode Island	34,121	35,232	34,751	-1.36%
Vermont	20,519	21,393	22,355	4.50%
Delaware	19,141	23,292	26,052	11.85%
District of Columbia	39,104	43,132	44,362	2.85%
Maryland	114,991	124,108	131,556	6.00%
New Jersey	157,874	172,641	186,661	8.12%
Pennsylvania	373,597	431,664	471,960	9.34%
Virgin Islands	4,394	4,532	4,633	2.22%
Virginia	173,691	209,859	214,983	2.44%
West Virginia	105,365	110,092	114,038	3.58%
Alabama	185,028	197,237	222,132	12.62%
Florida	502,669	579,945	657,576	13.39%
Georgia	314,687	353,040	375,739	6.43%
Kentucky	209,532	230,679	245,707	6.51%
Mississippi	142,641	151,678	174,500	15.05%
North Carolina	276,321	315,782	343,397	8.75%
South Carolina	184,771	206,987	219,503	6.05%
Tennessee	314,792	351,781	374,011	6.32%
Illinois	422,487	476,050	520,350	9.31%
Indiana	196,689	224,454	240,045	6.95%
Michigan	364,166	412,666	469,976	13.89%
Minnesota	110,088	116,873	124,398	6.44%
Ohio	379,354	419,271	448,524	6.98%
Wisconsin	119,455	131,738	143,459	8.90%
Arkansas	124,288	140,269	152,909	9.01%
Louisiana	250,388	274,130	318,126	16.05%
New Mexico	74,645	85,459	93,094	8.93%
Oklahoma	152,860	165,402	172,837	4.50%
Texas	717,238	864,342	941,050	8.87%
Colorado	90,096	103,574	107,405	3.70%
Iowa	66,436	76,909	89,655	16.57%
Kansas	70,845	74,193	78,165	5.35%
Missouri	248,540	281,193	298,380	6.11%
Montana	30,208	32,984	34,573	4.82%
Nebraska	42,507	48,078	49,948	3.89%
North Dakota	17,273	18,373	18,927	3.01%
South Dakota	20,018	21,113	22,483	6.49%
Utah	41,282	48,366	53,162	9.92%
Wyoming	10,205	10,382	10,422	0.39%
Alaska	17,797	17,696	20,224	14.29%
Arizona	181,145	207,849	220,498	6.09%
California	661,262	732,239	785,682	7.30%
Guam	7,098	7,585	8,066	6.34%
Hawaii	48,766	48,600	47,309	-2.66%
Idaho	32,428	36,083	37,151	2.96%
Nevada	49,214	53,516	54,877	2.54%
Oregon	199,205	212,132	218,297	2.91%
Washington	192,735	219,415	250,788	14.30%
US	9,153,623	10,278,593	11,197,377	8.94%

TABLE 37 Food Stamp Program Participation - Issuance - FY 2003 - FY 2005

STATE	Issuance FY 2003	Issuance FY 2004	Issuance FY 2005	Percent Change FY 2004 - FY 2005
Connecticut	\$164,854,160	\$197,530,353	\$223,198,180	12.99%
Maine	\$124,070,012	\$139,618,857	\$162,202,784	16.18%
Massachusetts	\$253,770,540	\$304,420,939	\$363,033,709	19.25%
New Hampshire	\$39,886,906	\$43,549,015	\$50,569,118	16.12%
New York	\$1,676,508,940	\$1,876,077,920	\$2,135,869,438	13.85%
Rhode Island	\$68,800,619	\$73,550,567	\$78,517,688	6.75%
Vermont	\$37,629,392	\$40,076,383	\$44,999,412	12.28%
Delaware	\$47,791,321	\$56,542,045	\$65,229,058	15.36%
District of Columbia	\$90,113,910	\$97,507,742	\$103,295,526	5.94%
Maryland	\$256,924,246	\$286,695,375	\$320,133,493	11.66%
New Jersey	\$338,821,016	\$377,525,993	\$437,423,008	15.87%
Pennsylvania	\$785,458,544	\$933,273,618	\$1,104,711,263	18.37%
Virgin Islands	\$18,494,328	\$19,215,159	\$20,817,269	8.34%
Virginia	\$366,217,567	\$476,165,722	\$499,708,150	4.94%
West Virginia	\$216,064,512	\$231,721,076	\$258,050,316	11.36%
Alabama	\$466,123,805	\$512,604,194	\$616,090,009	20.19%
Florida	\$987,756,897	\$1,268,549,090	\$1,597,912,047	25.96%
Georgia	\$782,410,897	\$923,814,897	\$1,047,842,395	13.43%
Kentucky	\$486,231,294	\$542,743,611	\$611,490,522	12.67%
Mississippi	\$335,073,821	\$360,952,477	\$462,961,820	28.26%
North Carolina	\$645,418,451	\$753,200,353	\$856,161,978	13.67%
South Carolina	\$443,355,574	\$501,204,515	\$565,811,046	12.89%
Tennessee	\$721,795,073	\$811,798,438	\$941,638,149	15.99%
Illinois	\$1,052,739,082	\$1,211,361,942	\$1,400,091,866	15.58%
Indiana	\$483,700,392	\$549,500,594	\$626,608,340	14.03%
Michigan	\$783,076,440	\$896,139,758	\$1,098,817,352	22.62%
Minnesota	\$227,125,549	\$246,770,329	\$274,996,874	11.44%
Ohio	\$878,758,371	\$1,009,262,441	\$1,155,257,476	14.47%
Wisconsin	\$233,462,771	\$269,438,872	\$316,951,818	17.63%
Arkansas	\$304,339,830	\$346,881,013	\$401,286,262	15.68%
Louisiana	\$685,267,266	\$753,905,377	\$978,765,504	29.83%
New Mexico	\$183,505,381	\$217,424,159	\$251,414,424	15.63%
Oklahoma	\$362,454,708	\$397,776,777	\$439,598,807	10.51%
Texas	\$1,880,851,630	\$2,306,786,060	\$2,659,288,088	15.28%
Colorado	\$203,312,158	\$252,941,644	\$313,224,564	23.83%
Iowa	\$149,243,938	\$176,334,334	\$219,761,007	24.63%
Kansas	\$140,386,993	\$158,017,032	\$179,999,844	13.91%
Missouri	\$567,586,196	\$663,426,425	\$735,757,569	10.90%
Montana	\$68,950,097	\$79,197,439	\$89,231,197	12.67%
Nebraska	\$89,301,593	\$108,691,184	\$119,523,412	9.97%
North Dakota	\$36,702,541	\$40,286,413	\$44,674,426	10.89%
South Dakota	\$50,515,052	\$53,934,332	\$61,477,144	13.99%
Utah	\$102,205,565	\$123,127,454	\$141,217,600	14.69%
Wyoming	\$24,054,276	\$24,981,367	\$26,976,298	7.99%
Alaska	\$65,728,367	\$64,404,884	\$80,405,244	24.84%
Arizona	\$497,638,214	\$577,867,879	\$633,808,912	9.68%
California	\$1,805,546,523	\$1,981,136,316	\$2,312,527,278	16.73%
Guam	\$53,437,307	\$48,115,089	\$53,633,228	11.47%
Hawaii	\$156,191,451	\$151,809,426	\$155,898,096	2.69%
Idaho	\$76,579,605	\$90,971,822	\$102,970,484	13.19%
Nevada	\$112,673,472	\$119,520,455	\$128,901,489	7.85%
Oregon	\$380,986,642	\$415,267,009	\$455,943,437	9.80%
Washington	\$394,382,981	\$455,273,391	\$539,048,283	18.40%
US	\$21,404,276,216	\$24,618,889,556	\$28,565,722,701	16.03%

TABLE 38: Food Stamp Program Households on Electronic Benefit Transfer (EBT) - FY 2003 - 2005

STATE	EBT Hshlds (Monthly Ave) FY 2003	% on EBT FY 2002	EBT Hshlds (Monthly Ave) FY 2004	% on EBT FY 2004	EBT Hshlds (Monthly Ave) FY 2005	% on EBT FY 2005
Connecticut	93,988	100%	102,032	100%	107,481	100%
Maine	0	0%	72,197	100%	78,170	100%
Massachusetts	135,194	100%	154,542	100%	176,120	100%
New Hampshire	22,150	100%	23,625	100%	25,198	100%
New York	719,700	99%	802,051	100%	915,703	100%
Rhode Island	34,121	100%	35,232	100%	34,751	100%
Vermont	13,567	66%	14,268	67%	15,077	67%
Delaware	0	0%	9562	41%	26,052	100%
District of Columbia	39,104	100%	43,132	100%	44,362	100%
Maryland	114,991	100%	124,108	100%	131,556	100%
New Jersey	157,874	100%	172,641	100%	186,661	100%
Pennsylvania	373,597	100%	431,664	100%	471,960	100%
Virgin Islands	0	0%	4,532	100%	4,633	100%
Virginia	173,691	100%	209,859	100%	214,983	100%
West Virginia	0	0%	110,092	100%	114,038	100%
Alabama	185,028	100%	197,237	100%	222,132	100%
Florida	502,669	100%	579,945	100%	657,576	100%
Georgia	314,687	100%	353,040	100%	375,739	100%
Kentucky	209,532	100%	230,679	100%	245,707	100%
Mississippi	142,641	100%	151,678	100%	174,500	100%
North Carolina	276,107	100%	315,489	100%	343,156	100%
South Carolina	184,771	100%	206,987	100%	219,503	100%
Tennessee	314,792	100%	351,781	100%	374,011	100%
Illinois	422,487	100%	476,050	100%	520,350	100%
Indiana	196,689	100%	224,454	100%	240,045	100%
Michigan	364,166	100%	412,666	100%	469,976	100%
Minnesota	99,363	90%	105,788	91%	109,344	88%
Ohio	357,891	94%	396,157	94%	424,450	95%
Wisconsin	119,455	100%	131,738	100%	143,459	100%
Arkansas	124,288	100%	140,269	100%	152,909	100%
Louisiana	250,388	100%	274,130	100%	318,126	100%
New Mexico	74,645	100%	85,458	100%	93,094	100%
Oklahoma	152,860	100%	165,402	100%	172,837	100%
Texas	717,237	100%	864,342	100%	941,050	100%
Colorado	90,096	100%	103,574	100%	107,405	100%
Iowa	8,121	12%	76,908	100%	89,655	100%
Kansas	70,844	100%	74,192	100%	78,165	100%
Missouri	248,540	100%	281,193	100%	298,380	100%
Montana	30,208	100%	32,984	100%	34,573	100%
Nebraska	42,506	100%	48,078	100%	49,948	100%
North Dakota	17,273	100%	18,373	100%	18,927	100%
South Dakota	20,018	100%	21,113	100%	22,483	100%
Utah	37,747	91%	44,948	93%	49,806	94%
Wyoming	10,205	100%	10,381	100%	10,422	100%
Alaska	17,797	100%	17,696	100%	20,224	100%
Arizona	181,141	100%	207,845	100%	220,498	100%
California	211,386	32%	646,059	88%	785,682	100%
Guam	N/A	0%	N/A	0%	8,066	100%
Hawaii	48,766	100%	48,600	100%	47,309	100%
Idaho	32,428	100%	36,083	100%	37,151	100%
Nevada	49,214	100%	53,516	100%	54,877	100%
Oregon	184,180	92%	196,384	93%	201,978	93%
Washington	192,735	100%	219,415	100%	250,788	100%
US	8,476,033	93%	10,126,501	99%	11,131,045	99%

TABLE 39: Food Stamp Program Federal Share of Certification Costs - FY 2004 - FY 2005

STATE	Federal Share Certification Costs - FY 2004	Federal Share Certification Costs - FY 2005	Percent Change
Connecticut	\$5,461,615	\$6,628,834	21.37%
Maine	\$4,717,687	\$4,124,818	-12.57%
Massachusetts	\$25,879,152	\$25,336,671	-2.10%
New Hampshire	\$640,211	\$730,809	14.15%
New York	\$113,680,734	\$114,359,185	0.60%
Rhode Island	\$2,050,724	\$2,250,462	9.74%
Vermont	\$622,613	\$737,487	18.45%
Delaware	\$3,666,965	\$3,594,000	-1.99%
District of Columbia	\$6,494,697	\$7,441,948	14.58%
Maryland	\$25,185,406	\$26,003,970	3.25%
New Jersey	\$39,466,518	\$45,248,452	14.65%
Pennsylvania	\$82,047,159	\$83,844,820	2.19%
Virgin Islands	\$2,262,856	\$2,285,751	1.01%
Virginia	\$45,513,701	\$53,233,108	16.96%
West Virginia	\$7,048,424	\$7,087,571	0.56%
Alabama	\$15,947,950	\$16,914,243	6.06%
Florida	\$50,222,408	\$40,501,979	-19.35%
Georgia	\$35,837,055	\$35,879,567	0.12%
Kentucky	\$21,467,749	\$21,963,926	2.31%
Mississippi	\$15,461,914	\$17,114,848	10.69%
North Carolina	\$39,124,029	\$42,235,775	7.95%
South Carolina	\$11,012,253	\$11,184,669	1.57%
Tennessee	\$18,104,256	\$21,784,403	20.33%
Illinois	\$41,740,583	\$48,185,162	15.44%
Indiana	\$25,322,591	\$25,674,419	1.39%
Michigan	\$60,853,087	\$64,682,576	6.29%
Minnesota	\$22,984,922	\$24,447,818	6.36%
Ohio	\$48,216,221	\$41,194,837	-14.56%
Wisconsin	\$13,253,611	\$13,431,165	1.34%
Arkansas	\$15,658,795	\$17,099,661	9.20%
Louisiana	\$33,344,690	\$35,680,858	7.01%
New Mexico	\$10,446,532	\$13,156,007	25.94%
Oklahoma	\$23,699,071	\$26,542,383	12.00%
Texas	\$107,948,016	\$81,672,172	-24.34%
Colorado	\$12,827,597	\$12,743,422	-0.66%
Iowa	\$9,939,649	\$10,031,654	0.93%
Kansas	\$9,869,738	\$11,106,172	12.53%
Missouri	\$23,113,496	\$25,595,946	10.74%
Montana	\$2,985,951	\$3,436,690	15.10%
Nebraska	\$9,291,248	\$8,411,068	-9.47%
North Dakota	\$2,915,975	\$2,892,426	-0.81%
South Dakota	\$2,873,828	\$3,515,406	22.32%
Utah	\$12,049,314	\$12,886,316	6.95%
Wyoming	\$685,590	\$840,587	22.61%
Alaska	\$5,615,330	\$6,251,869	11.34%
Arizona	\$14,965,486	\$17,554,645	17.30%
California	\$172,445,494	\$174,208,055	1.02%
Guam	\$1,363,238	\$798,659	-41.41%
Hawaii	\$6,793,605	\$6,026,933	-11.29%
Idaho	\$5,122,462	\$4,883,791	-4.66%
Nevada	\$7,809,407	\$7,417,523	-5.02%
Oregon	\$15,192,283	\$12,499,806	-17.72%
Washington	\$24,353,689	\$24,806,615	1.86%
US	\$1,315,597,575	\$1,328,161,937	0.96%

TABLE 40: Food Stamp Program Federal Share of Certification Costs per Case per Month - FY 2004 - FY 2005

STATE	Federal Share Cert Cost Per Case Per Month Costs - FY 2004	Federal Share Cert Cost Per Case Per Month Costs - FY 2005	Percent Change
Connecticut	\$4.45	\$5.14	15.37%
Maine	\$5.45	\$4.40	-19.25%
Massachusetts	\$13.95	\$11.99	-14.09%
New Hampshire	\$2.26	\$2.42	7.02%
New York	\$11.81	\$10.41	-11.89%
Rhode Island	\$4.85	\$5.40	11.26%
Vermont	\$2.43	\$2.75	13.35%
Delaware	\$13.12	\$11.50	-12.37%
District of Columbia	\$12.55	\$13.98	11.41%
Maryland	\$16.91	\$16.47	-2.60%
New Jersey	\$19.05	\$20.20	6.04%
Pennsylvania	\$15.84	\$14.80	-6.53%
Virgin Islands	\$41.61	\$41.11	-1.18%
Virginia	\$18.07	\$20.63	14.17%
West Virginia	\$5.34	\$5.18	-2.92%
Alabama	\$6.74	\$6.35	-5.83%
Florida	\$7.22	\$5.13	-28.88%
Georgia	\$8.46	\$7.96	-5.93%
Kentucky	\$7.76	\$7.45	-3.95%
Mississippi	\$8.49	\$8.17	-3.79%
North Carolina	\$10.32	\$10.25	-0.73%
South Carolina	\$4.43	\$4.25	-4.23%
Tennessee	\$4.29	\$4.85	13.18%
Illinois	\$7.31	\$7.72	5.61%
Indiana	\$9.40	\$8.91	-5.20%
Michigan	\$12.29	\$11.47	-6.67%
Minnesota	\$16.39	\$16.38	-0.07%
Ohio	\$9.58	\$7.65	-20.13%
Wisconsin	\$8.38	\$7.80	-6.94%
Arkansas	\$9.30	\$9.32	0.18%
Louisiana	\$10.14	\$9.35	-7.79%
New Mexico	\$10.19	\$11.78	15.61%
Oklahoma	\$11.94	\$12.80	7.18%
Texas	\$10.41	\$7.23	-30.51%
Colorado	\$10.32	\$9.89	-4.20%
Iowa	\$10.77	\$9.32	-13.42%
Kansas	\$11.09	\$11.84	6.81%
Missouri	\$6.85	\$7.15	4.36%
Montana	\$7.54	\$8.28	9.80%
Nebraska	\$16.10	\$14.03	-12.86%
North Dakota	\$13.23	\$12.74	-3.71%
South Dakota	\$11.34	\$13.03	14.87%
Utah	\$20.76	\$20.20	-2.70%
Wyoming	\$5.50	\$6.72	22.13%
Alaska	\$26.44	\$25.76	-2.58%
Arizona	\$6.00	\$6.63	10.57%
California	\$19.63	\$18.48	-5.85%
Guam	\$14.98	\$8.25	-44.91%
Hawaii	\$11.65	\$10.62	-8.86%
Idaho	\$11.83	\$10.95	-7.40%
Nevada	\$12.16	\$11.26	-7.37%
Oregon	\$5.97	\$4.77	-20.05%
Washington	\$9.25	\$8.24	-10.88%
US	\$10.67	\$9.88	-7.33%

TABLE 41: Food Stamp Program Federal Share of Total Admin. Costs - FY 2004 - FY 2005

STATE	Federal Share Total Admin Cost FY 2004	Federal Share Total Admin Cost FY 2005	Percent Change
Connecticut	\$19,665,275	\$20,726,767	5.40%
Maine	\$10,247,377	\$10,469,202	2.16%
Massachusetts	\$33,005,392	\$35,094,150	6.33%
New Hampshire	\$5,104,351	\$4,670,046	-8.51%
New York	\$257,684,685	\$269,250,515	4.49%
Rhode Island	\$6,865,422	\$7,354,520	7.12%
Vermont	\$6,568,264	\$6,312,190	-3.90%
Delaware	\$6,733,295	\$8,476,962	25.90%
District of Columbia	\$11,621,897	\$12,313,725	5.95%
Maryland	\$35,622,176	\$36,407,857	2.21%
New Jersey	\$78,113,561	\$89,651,330	14.77%
Pennsylvania	\$139,274,399	\$144,541,064	3.78%
Virgin Islands	\$4,020,819	\$3,997,909	-0.57%
Virginia	\$74,164,404	\$76,840,813	3.61%
West Virginia	\$14,174,708	\$14,198,636	0.17%
Alabama	\$29,710,172	\$27,239,859	-8.31%
Florida	\$79,117,259	\$70,713,724	-10.62%
Georgia	\$60,346,187	\$56,223,752	-6.83%
Kentucky	\$27,987,600	\$29,435,609	5.17%
Mississippi	\$26,253,408	\$25,035,974	-4.64%
North Carolina	\$57,747,752	\$60,609,374	4.96%
South Carolina	\$19,474,636	\$20,154,183	3.49%
Tennessee	\$33,578,740	\$37,366,395	11.28%
Illinois	\$86,860,625	\$85,359,934	-1.73%
Indiana	\$38,878,553	\$40,273,400	3.59%
Michigan	\$84,519,066	\$89,090,488	5.41%
Minnesota	\$37,424,968	\$40,905,173	9.30%
Ohio	\$113,666,482	\$104,179,387	-8.35%
Wisconsin	\$37,472,596	\$38,613,793	3.05%
Arkansas	\$23,291,024	\$23,683,813	1.69%
Louisiana	\$44,619,702	\$46,224,222	3.60%
New Mexico	\$20,632,167	\$20,018,419	-2.97%
Oklahoma	\$33,191,540	\$36,297,725	9.36%
Texas	\$155,401,248	\$143,258,267	-7.81%
Colorado	\$25,710,624	\$24,726,332	-3.83%
Iowa	\$16,369,658	\$15,689,620	-4.15%
Kansas	\$16,056,662	\$19,005,196	18.36%
Missouri	\$39,171,291	\$41,541,129	6.05%
Montana	\$6,987,727	\$7,614,071	8.96%
Nebraska	\$14,924,558	\$15,159,426	1.57%
North Dakota	\$5,810,219	\$5,786,931	-0.40%
South Dakota	\$5,889,878	\$6,730,617	14.27%
Utah	\$18,380,831	\$19,856,215	8.03%
Wyoming	\$4,177,426	\$4,396,191	5.24%
Alaska	\$7,977,264	\$8,564,035	7.36%
Arizona	\$29,091,003	\$35,178,328	20.93%
California	\$399,397,096	\$437,225,958	9.47%
Guam	\$3,616,009	\$2,614,374	-27.70%
Hawaii	\$10,678,840	\$9,755,863	-8.64%
Idaho	\$8,564,307	\$7,942,355	-7.26%
Nevada	\$11,642,703	\$11,962,567	2.75%
Oregon	\$38,526,695	\$41,319,946	7.25%
Washington	\$42,449,648	\$43,094,936	1.52%
US	\$2,418,462,189	\$2,493,153,267	3.09%

TABLE 42: Food Stamp Program Federal Share of Total Cost per Case per Month - FY 2004 - FY 2005

STATE	Federal Share Total Cost Per Case Per Month Costs - FY 2004	Federal Share Total Cost Per Case Per Month Costs - FY 2005	Percent Change
Connecticut	\$16.04	\$16.07	0.18%
Maine	\$11.83	\$11.16	-5.64%
Massachusetts	\$17.80	\$16.61	-6.70%
New Hampshire	\$18.01	\$15.44	-14.22%
New York	\$26.77	\$24.50	-8.48%
Rhode Island	\$16.24	\$17.64	8.61%
Vermont	\$25.59	\$23.53	-8.04%
Delaware	\$24.09	\$27.12	12.56%
District of Columbia	\$22.45	\$23.13	3.02%
Maryland	\$23.92	\$23.06	-3.58%
New Jersey	\$37.71	\$40.02	6.15%
Pennsylvania	\$26.89	\$25.52	-5.08%
Virgin Islands	\$73.93	\$71.91	-2.73%
Virginia	\$29.45	\$29.79	1.14%
West Virginia	\$10.73	\$10.38	-3.30%
Alabama	\$12.55	\$10.22	-18.59%
Florida	\$11.37	\$8.96	-21.17%
Georgia	\$14.24	\$12.47	-12.46%
Kentucky	\$10.11	\$9.98	-1.26%
Mississippi	\$14.42	\$11.96	-17.11%
North Carolina	\$15.24	\$14.71	-3.48%
South Carolina	\$7.84	\$7.65	-2.41%
Tennessee	\$7.95	\$8.33	4.67%
Illinois	\$15.21	\$13.67	-10.09%
Indiana	\$14.43	\$13.98	-3.14%
Michigan	\$17.07	\$15.80	-7.44%
Minnesota	\$26.69	\$27.40	2.69%
Ohio	\$22.59	\$19.36	-14.32%
Wisconsin	\$23.70	\$22.43	-5.37%
Arkansas	\$13.84	\$12.91	-6.72%
Louisiana	\$13.56	\$12.11	-10.73%
New Mexico	\$20.12	\$17.92	-10.93%
Oklahoma	\$16.72	\$17.50	4.65%
Texas	\$14.98	\$12.69	-15.33%
Colorado	\$20.69	\$19.18	-7.26%
Iowa	\$17.74	\$14.58	-17.78%
Kansas	\$18.03	\$20.26	12.35%
Missouri	\$11.61	\$11.60	-0.06%
Montana	\$17.65	\$18.35	3.95%
Nebraska	\$25.87	\$25.29	-2.23%
North Dakota	\$26.35	\$25.48	-3.32%
South Dakota	\$23.25	\$24.95	7.31%
Utah	\$31.67	\$31.13	-1.72%
Wyoming	\$33.53	\$35.15	4.83%
Alaska	\$37.57	\$35.29	-6.07%
Arizona	\$11.66	\$13.30	13.99%
California	\$45.45	\$46.37	2.03%
Guam	\$39.73	\$27.01	-32.01%
Hawaii	\$18.31	\$17.18	-6.15%
Idaho	\$19.78	\$17.82	-9.93%
Nevada	\$18.13	\$18.17	0.20%
Oregon	\$15.13	\$15.77	4.22%
Washington	\$16.12	\$14.32	-11.18%
US	\$19.61	\$18.55	-5.37%

TABLE 43: Food Stamp Program Total Fair Hearings - FY 2004 - FY 2005

STATE	Fair Hearings Completed FY 2004	Fair Hearings Completed FY 2005	Percent Change
Connecticut	307	315	2.61%
Maine	31	32	3.23%
Massachusetts	655	631	-3.66%
New Hampshire	8	5	-37.50%
New York	6,364	6,714	5.50%
Rhode Island	126	137	8.73%
Vermont	24	23	-4.17%
Delaware	14	25	78.57%
District of Columbia	21	0	-100.00%
Maryland	30	264	780.00%
New Jersey	49	56	14.29%
Pennsylvania	6,316	6,355	0.62%
Virgin Islands	15	8	-46.67%
Virginia	205	369	80.00%
West Virginia	72	68	-5.56%
Alabama	133	134	0.75%
Florida	554	918	65.70%
Georgia	1,521	1,288	-15.32%
Kentucky	76	74	-2.63%
Mississippi	237	222	-6.33%
North Carolina	943	1,195	26.72%
South Carolina	165	157	-4.85%
Tennessee	231	13	-94.37%
Illinois	251	217	-13.55%
Indiana	192	162	-15.63%
Michigan	921	430	-53.31%
Minnesota	668	960	43.71%
Ohio	3,061	3,096	1.14%
Wisconsin	689	843	22.35%
Arkansas	442	51	-88.46%
Louisiana	277	197	-28.88%
New Mexico	107	38	-64.49%
Oklahoma	47	24	-48.94%
Texas	11,985	16,650	38.92%
Colorado	75	72	-4.00%
Iowa	225	300	33.33%
Kansas	140	133	-5.00%
Missouri	513	532	3.70%
Montana	37	64	72.97%
Nebraska	175	168	-4.00%
North Dakota	4	6	50.00%
South Dakota	14	18	28.57%
Utah	57	36	-36.84%
Wyoming	7	7	0.00%
Alaska	21	39	85.71%
Arizona	421	846	100.95%
California	7,100	3,096	-56.39%
Guam	0	0	N/A
Hawaii	25	17	-32.00%
Idaho	54	48	-11.11%
Nevada	22	45	104.55%
Oregon	134	197	47.01%
Washington	244	270	10.66%
US	46,036	47,565	3.32%

TABLE 44: Food Stamp Program - Fraud Investigations - FY 2004 - FY 2005

STATE	Total Investigations Completed FY 2004	Total Investigations Completed FY 2005	Percent Change
Connecticut	2,704	2,401	-11.21%
Maine	107	41	-61.68%
Massachusetts	4,224	5,450	29.02%
New Hampshire	934	964	3.21%
New York	141,645	140,299	-0.95%
Rhode Island	2,295	2,614	13.90%
Vermont	180	175	-2.78%
Delaware	57,223	57,339	0.20%
District of Columbia	1,255	1,491	18.80%
Maryland	2,838	1,668	-41.23%
New Jersey	12,905	12,778	-0.98%
Pennsylvania	30,942	21,972	-28.99%
Virgin Islands	1,789	1,555	-13.08%
Virginia	10,229	7,352	-28.13%
West Virginia	2,052	2,760	34.50%
Alabama	2,683	1,764	-34.25%
Florida	45,163	32,654	-27.70%
Georgia	21,729	16,244	-25.24%
Kentucky	570	701	22.98%
Mississippi	2,486	2,498	0.48%
North Carolina	11,188	10,923	-2.37%
South Carolina	0	11,219	0.00%
Tennessee	10,330	18,894	82.90%
Illinois	4,995	4,462	-10.67%
Indiana	1,800	2,604	44.67%
Michigan	3,602	5,271	46.34%
Minnesota	6,915	7,977	15.36%
Ohio	22,974	70,766	208.03%
Wisconsin	4,399	3,549	-19.32%
Arkansas	7,566	7,065	-6.62%
Louisiana	1,304	896	-31.29%
New Mexico	466	246	-47.21%
Oklahoma	1,912	3,055	59.78%
Texas	9,836	6,998	-28.85%
Colorado	2,323	1,365	-41.24%
Iowa	1,017	1,299	27.73%
Kansas	1,710	1,726	0.94%
Missouri	1,877	1,656	-11.77%
Montana	673	487	-27.64%
Nebraska	543	364	-32.97%
North Dakota	0	1	0.00%
South Dakota	452	530	17.26%
Utah	7,298	7,146	-2.08%
Wyoming	272	273	0.37%
Alaska	1,299	1,207	-7.08%
Arizona	13,925	14,532	4.36%
California	262,775	255,743	-2.68%
Guam	175	247	41.14%
Hawaii	776	959	23.58%
Idaho	302	407	34.77%
Nevada	2,631	2,049	-22.12%
Oregon	2,066	2,173	5.18%
Washington	14,343	12,987	-9.45%
US	745,697	771,796	3.50%

TABLE 45: Food Stamp Program - Total Disqualifications - FY 2004- FY 2005

STATE	Total Disqualified FY 2004	Total Disqualified FY 2005	Percent Change
Connecticut	99	150	51.52%
Maine	117	85	-27.35%
Massachusetts	167	432	158.68%
New Hampshire	68	56	-17.65%
New York	2,174	1,442	-33.67%
Rhode Island	30	32	6.67%
Vermont	74	59	-20.27%
Delaware	126	100	-20.63%
District of Columbia	6	9	50.00%
Maryland	180	104	-42.22%
New Jersey	2,574	1,666	-35.28%
Pennsylvania	1,456	920	-36.81%
Virgin Islands	15	74	393.33%
Virginia	1,145	1,030	-10.04%
West Virginia	473	395	-16.49%
Alabama	709	630	-11.14%
Florida	4,320	2,755	-36.23%
Georgia	5,588	4,270	-23.59%
Kentucky	194	456	135.05%
Mississippi	3,867	1,656	-57.18%
North Carolina	2,201	2,024	-8.04%
South Carolina	1,402	1,223	-12.77%
Tennessee	3,203	2,415	-24.60%
Illinois	851	1,041	22.33%
Indiana	260	370	42.31%
Michigan	1,497	2,161	44.36%
Minnesota	1,070	1,232	15.14%
Ohio	2,699	2,591	-4.00%
Wisconsin	124	67	-45.97%
Arkansas	662	184	-72.21%
Louisiana	1,197	789	-34.09%
New Mexico	264	70	-73.48%
Oklahoma	491	507	3.26%
Texas	5,775	3,575	-38.10%
Colorado	574	371	-35.37%
Iowa	129	179	38.76%
Kansas	681	165	-75.77%
Missouri	1,081	758	-29.88%
Montana	561	402	-28.34%
Nebraska	269	218	-18.96%
North Dakota	126	141	11.90%
South Dakota	118	88	-25.42%
Utah	289	274	-5.19%
Wyoming	116	119	2.59%
Alaska	196	200	2.04%
Arizona	46	91	97.83%
California	3,876	3,282	-15.33%
Guam	26	77	196.15%
Hawaii	620	579	-6.61%
Idaho	156	174	11.54%
Nevada	488	637	30.53%
Oregon	651	683	4.92%
Washington	13	19	46.15%
US	55,094	43,027	-21.90%

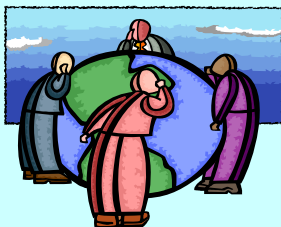
TABLE 46: Food Stamp Program - Recipient Claims Established - FY 2004 - FY 2005

STATE	Total Claims Established FY 2004	Total Claims Established FY 2005	Percent Change
Connecticut	\$1,537,239	\$1,371,984	-10.75%
Maine	\$564,686	\$1,085,507	92.23%
Massachusetts	\$846,982	\$1,241,550	46.59%
New Hampshire	\$403,976	\$271,130	-32.88%
New York	\$7,908,435	\$6,054,214	-23.45%
Rhode Island	\$738,747	\$707,897	-4.18%
Vermont	\$406,391	\$304,576	-25.05%
Delaware	\$342,372	\$603,416	76.25%
District of Columbia	\$924,834	\$1,299,634	40.53%
Maryland	\$2,204,689	\$2,449,695	11.11%
New Jersey	\$6,444,119	\$6,710,018	4.13%
Pennsylvania	\$13,723,671	\$8,637,934	-37.06%
Virgin Islands	\$167,968	\$309,404	84.20%
Virginia	\$2,321,445	\$2,617,106	12.74%
West Virginia	\$4,100,020	\$3,497,409	-14.70%
Alabama	\$3,253,181	\$4,201,303	29.14%
Florida	\$10,012,680	\$9,328,692	-6.83%
Georgia	\$9,125,596	\$9,161,186	0.39%
Kentucky	\$2,314,348	\$3,499,480	51.21%
Mississippi	\$5,149,935	\$4,861,760	-5.60%
North Carolina	\$6,390,528	\$9,088,358	42.22%
South Carolina	\$9,477,255	\$10,310,997	8.80%
Tennessee	\$8,117,102	\$7,277,277	-10.35%
Illinois	\$15,522,060	\$16,918,801	9.00%
Indiana	\$4,742,032	\$4,849,837	2.27%
Michigan	\$2,068,236	\$2,657,353	28.48%
Minnesota	\$5,154,293	\$5,640,436	9.43%
Ohio	\$7,403,698	\$7,769,013	4.93%
Wisconsin	\$2,474,711	\$2,051,963	-17.08%
Arkansas	\$825,134	\$848,378	2.82%
Louisiana	\$2,214,737	\$1,615,539	-27.06%
New Mexico	\$1,449,962	\$1,491,438	2.86%
Oklahoma	\$1,276,388	\$1,457,514	14.19%
Texas	\$17,300,830	\$11,766,930	-31.99%
Colorado	\$1,849,570	\$400,208	-78.36%
Iowa	\$702,513	\$804,546	14.52%
Kansas	\$1,875,189	\$1,602,249	-14.56%
Missouri	\$3,761,657	\$3,113,931	-17.22%
Montana	\$780,758	\$913,254	16.97%
Nebraska	\$1,066,694	\$1,101,341	3.25%
North Dakota	\$310,073	\$398,269	28.44%
South Dakota	\$407,627	\$417,513	2.43%
Utah	\$1,437,712	\$1,619,371	12.64%
Wyoming	\$136,971	\$184,381	34.61%
Alaska	\$489,926	\$435,589	-11.09%
Arizona	\$3,905,592	\$3,051,962	-21.86%
California	\$55,615,380	\$76,964,837	38.39%
Guam	\$96,310	\$76,578	-20.49%
Hawaii	\$3,459,311	\$2,813,322	-18.67%
Idaho	\$627,427	\$339,196	-45.94%
Nevada	\$624,141	\$794,025	27.22%
Oregon	\$5,448,483	\$8,401,731	54.20%
Washington	\$3,939,497	\$3,986,112	1.18%
US	\$243,443,110	\$259,376,141	6.54%

TABLE 47: Food Stamp Program - Recipient Claims Collected - FY 2004 - FY 2005

STATE	Total Claims Collected FY 2004	Total Claims Collected FY 2005	Percent Change
Connecticut	\$2,202,513	\$1,548,474	-29.70%
Maine	\$574,175	\$559,243	-2.60%
Massachusetts	\$1,022,965	\$1,068,653	4.47%
New Hampshire	\$394,063	\$379,517	-3.69%
New York	\$5,922,457	\$5,285,187	-10.76%
Rhode Island	\$675,808	\$632,175	-6.46%
Vermont	\$326,471	\$349,551	7.07%
Delaware	\$457,662	\$465,957	1.81%
District of Columbia	\$938,298	\$905,051	-3.54%
Maryland	\$2,471,167	\$2,526,929	2.26%
New Jersey	\$9,706,979	\$8,548,380	-11.94%
Pennsylvania	\$15,337,823	\$10,888,235	-29.01%
Virgin Islands	\$173,984	\$171,987	-1.15%
Virginia	\$2,615,200	\$2,513,923	-3.87%
West Virginia	\$3,196,951	\$3,153,240	-1.37%
Alabama	\$1,737,017	\$2,098,506	20.81%
Florida	\$8,308,498	\$7,877,360	-5.19%
Georgia	\$7,106,533	\$7,015,365	-1.28%
Kentucky	\$2,341,332	\$1,961,763	-16.21%
Mississippi	\$3,652,163	\$4,027,453	10.28%
North Carolina	\$4,822,903	\$5,095,708	5.66%
South Carolina	\$5,200,638	\$5,899,114	13.43%
Tennessee	\$7,550,007	\$7,270,947	-3.70%
Illinois	\$13,086,057	\$16,477,594	25.92%
Indiana	\$2,758,139	\$3,081,889	11.74%
Michigan	\$4,266,136	\$4,928,940	15.54%
Minnesota	\$4,222,199	\$4,862,907	15.17%
Ohio	\$6,712,951	\$7,471,581	11.30%
Wisconsin	\$2,609,134	\$2,410,062	-7.63%
Arkansas	\$736,635	\$959,518	30.26%
Louisiana	\$3,805,057	\$2,944,725	-22.61%
New Mexico	\$1,556,502	\$1,395,556	-10.34%
Oklahoma	\$712,496	\$774,229	8.66%
Texas	\$18,416,728	\$20,686,935	12.33%
Colorado	\$2,255,639	\$527,989	-76.59%
Iowa	\$596,881	\$522,339	-12.49%
Kansas	\$2,058,026	\$1,826,184	-11.27%
Missouri	\$3,659,365	\$3,515,478	-3.93%
Montana	\$601,366	\$671,861	11.72%
Nebraska	\$892,618	\$945,072	5.88%
North Dakota	\$323,398	\$358,846	10.96%
South Dakota	\$359,419	\$376,670	4.80%
Utah	\$977,809	\$1,060,405	8.45%
Wyoming	\$145,662	\$136,631	-6.20%
Alaska	\$366,157	\$328,075	-10.40%
Arizona	\$2,569,614	\$2,689,607	4.67%
California	\$31,892,688	\$36,484,078	14.40%
Guam	\$126,297	\$89,447	-29.18%
Hawaii	\$1,795,004	\$1,820,004	1.39%
Idaho	\$678,585	\$549,739	-18.99%
Nevada	\$595,869	\$447,236	-24.94%
Oregon	\$3,379,873	\$4,927,765	45.80%
Washington	\$2,967,477	\$3,236,724	9.07%
US	\$201,859,389	\$206,750,803	2.42%

MULTI-YEAR NATIONAL DATA



FOOD STAMP PROGRAM ISSUANCE AND PARTICIPATION - FY 2000 - 2005

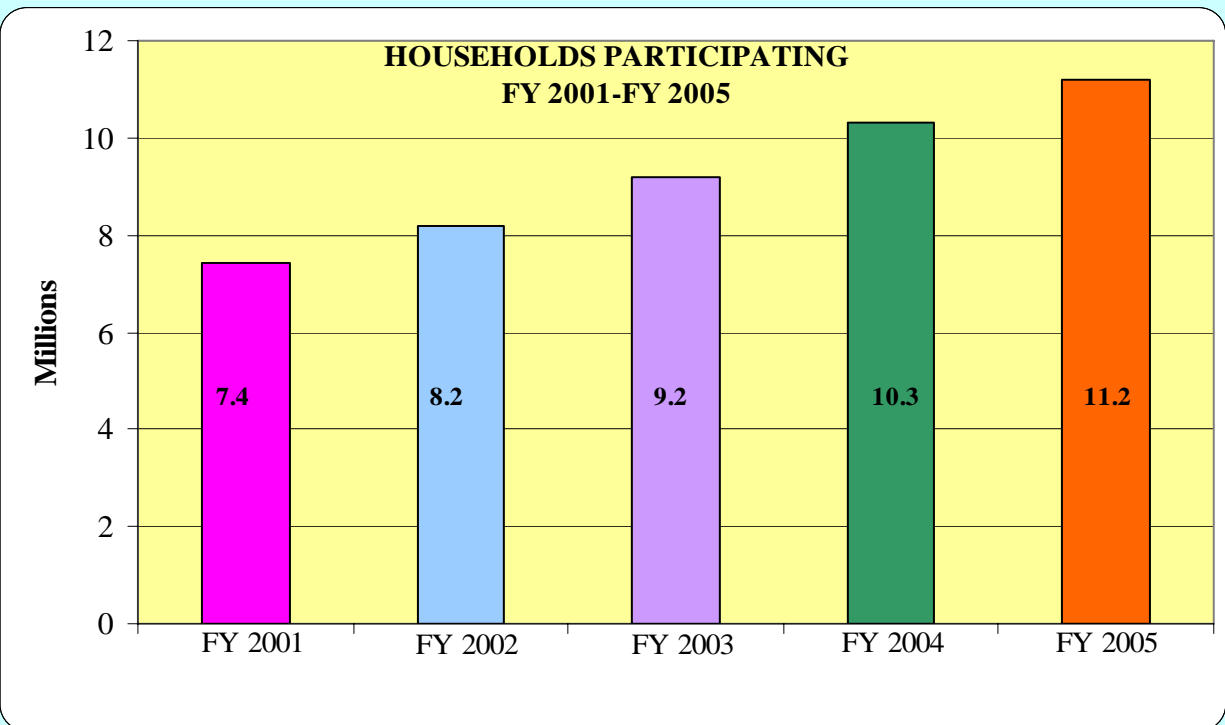
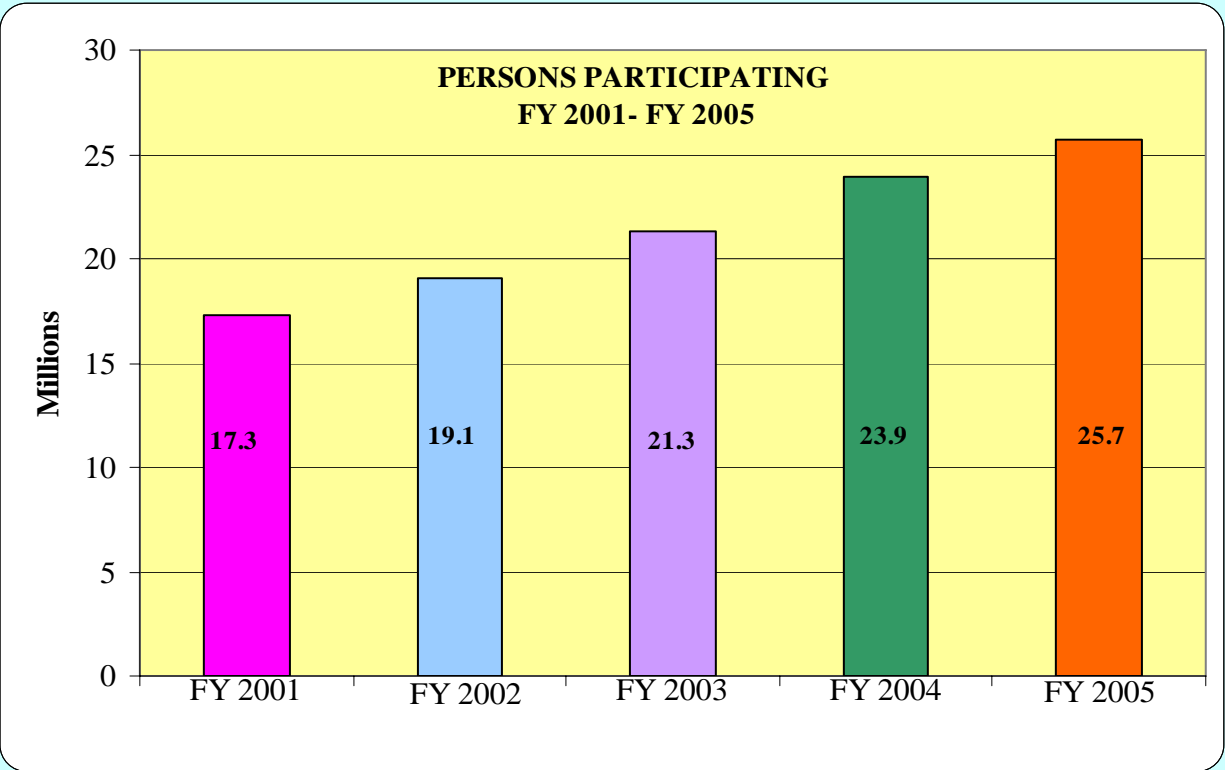
	FY 2000	FY 2001	FY 2002	FY 2003	FY 2004	FY 2005
<u>TOTAL PARTICIPATION AND ISSUANCE</u>						
PERSONS (MONTHLY) (IN MIL)	17.2	17.3	19.1	21.3	23.9	25.7
HOUSEHOLDS (MONTHLY) (IN MIL)	7.4	7.4	8.2	9.2	10.3	11.2
ISSUANCE (IN MIL \$)	\$14,983	\$15,547	\$18,256	\$21,404	\$24,477	\$28,566
AVG MONTHLY BENEFIT PER PERSON	\$72.62	\$74.81	\$79.67	\$83.90	\$85.50	\$92.56
AVG MONTHLY BENEFIT PER HSHLD	\$169.85	\$173.93	\$185.65	\$194.86	\$198.44	\$212.59
<u>EBT</u>						
PERSONS (MONTHLY) (IN MIL)	12.5	13.7	16.3	19.6	23.6	25.6
HOUSEHOLDS (MONTHLY) (IN MIL)	5.4	5.9	7	8.5	10.1	11.1
ISSUANCE (IN MIL \$)	\$11,041	\$12,323	\$15,561	\$19,727	\$24,114	\$28,510
% OF TOTAL ISSUANCE	73.69%	79.26%	85.24%	92.17%	98.52%	99.81%
% OF TOTAL HOUSEHOLDS	72.97%	79.73%	85.37%	92.39%	98.06%	99.41%
<u>COUPON</u>						
PERSONS (MONTHLY) (IN MIL)	4.4	3.5	2.7	1.6	0.2	0
HOUSEHOLDS (MONTHLY) (IN MIL)	1.8	1.4	1.1	0.6	0.1	0
COUPON ISSUANCE (IN MIL \$)	\$3,754	\$3,125	\$2,657	\$1,635	\$314	\$0
% OF TOTAL ISSUANCE	25.06%	20.10%	14.55%	7.64%	1.28%	0.00%
% OF TOTAL HOUSEHOLDS	24.32%	18.92%	13.41%	6.52%	0.97%	0.00%
<u>CASH-OUT</u>						
PERSONS (MONTHLY) (IN MIL)	0.3	0.1	0.1	0.1	0.1	0.1
HOUSEHOLDS (MONTHLY) (IN MIL)	0.1	0.1	0.1	0.1	0.1	0.1
ISSUANCE (IN MIL \$)	\$189	\$99	\$38	\$43	\$50	\$52
% OF TOTAL ISSUANCE	1.26%	0.64%	0.21%	0.20%	0.20%	0.18%
% OF TOTAL HOUSEHOLDS	1.35%	1.35%	1.22%	1.09%	0.97%	0.89%

NOTE: TOTALS MAY NOT ADD DUE TO ROUNDING.

Source: FNS-388/46

DATA AS OF: 02/07/07

CHANGES IN PERSONS & HOUSEHOLDS PARTICIPATING FY 2001 - FY 2005



FOOD STAMP PROGRAM RECIPIENT FRAUD ACTIVITY - FY 2000 - 2005

	FY 2000	FY 2001	FY 2002	FY 2003	FY 2004	FY 2005
<u>INVESTIGATIONS</u>						
INV COMPLETED	855,335	864,282	833,630	863,813	745,697	771,796
FRAUD \$ DETERMINED BY INV (IN MIL \$)	\$78.30	\$77.90	\$77.80	\$72.60	\$63.80	\$73.32
<u>PROSECUTIONS</u>						
PROS. COMPLETED	20,114	13,576	12,448	9,550	8,764	6,889
DISQ CONSENT AGRMNTS	15,786	10,208	10,075	9,678	9,609	6,389
FRAUD INVOLVED (IN MIL \$)	\$40.7	\$46.4	\$27.1	\$24.6	\$21.7	\$19.2
PERSONS DISQUALIFIED	35,524	23,323	22,183	18,821	18,144	13,278
<u>FRAUD HEARINGS</u>						
HEARINGS HELD	21,319	20,379	14,582	14,896	15,595	11,776
WAIVED HEARINGS	27,184	26,653	25,334	26,583	22,598	19,224
FRAUD INVOLVED (IN MIL \$)	\$37.3	\$34.4	\$33.2	\$32.6	\$29.3	\$26.1
PERSONS DISQUALIFIED	47,149	45,405	38,831	40,379	36,944	30,004
<u>TOTALS (PROSECUTIONS & HEARINGS)</u>						
TOTAL DISQUALIFIED	81,580	68,728	61,014	59,200	55,088	43,027
TOTAL FRAUD INVOLVED (IN MIL \$)	\$78.0	\$80.8	\$60.3	\$57.2	\$50.9	\$45.3
<u>RECIPIENT CLAIMS</u>						
<u>CLAIMS ESTABLISHED (IN MIL \$)</u>						
FRAUD 1/	\$31.6	\$23.6	\$25.6	\$25.7	\$23.2	\$21.4
NONFRAUD	\$218.9	\$229.8	\$234.3	\$236.5	\$220.2	\$237.9
TOTAL	\$250.5	\$253.4	\$259.9	\$262.2	\$243.4	\$259.4
<u>CLAIMS COLLECTED (IN MIL \$)</u>						
FRAUD	\$69.6	\$64.0	\$62.6	\$60.9	\$58.0	\$57.9
NONFRAUD	\$150.1	\$143.9	\$146.0	\$145.8	\$143.8	\$148.8
TOTAL	\$219.6	\$207.9	\$208.6	\$206.8	\$201.9	\$206.7

TOTALS MAY NOT ADD DUE TO ROUNDING.

1/ SOME STATES ESTABLISH POTENTIAL FRAUD CLAIMS AS HOUSEHOLD ERROR CLAIMS INITIALLY AND THEN TRANSFER THE CLAIM FROM INADVERTENT HOUSEHOLD ERROR TO FRAUD CLAIM AFTER THE PROSECUTION OR FRAUD HEARING. THUS, THE SUM OF THE FRAUD INVOLVED FROM PROSECUTION AND FRAUD HEARINGS IS A BETTER MEASURE OF THE AMOUNT OF FRAUD CLAIMS ULTIMATELY ESTABLISHED.

SOURCE: FNS-366B AND FNS-209

DATA AS OF: 02/07/07

FOOD STAMP PROGRAM RECIPIENT CLAIMS - FY 2000 - 2005

CLAIMS AND COLLECTIONS IN MILLIONS \$ (EXCEPT AVERAGE DOLLAR AMOUNT PER CLAIM)

	FY 2000	FY 2001	FY 2002	FY 2003	FY 2004	FY 2005
<u>NEW CLAIMS ESTABLISHED</u>						
FRAUD	\$31.6	\$23.6	\$25.6	\$25.7	\$23.2	\$21.4
HOUSEHOLD ERROR	\$176.1	\$172.7	\$175.7	\$183.9	\$172.0	\$165.7
AGENCY ERROR	\$42.8	\$57.1	\$58.6	\$52.6	\$48.3	\$72.3
TOTAL	\$250.5	\$253.4	\$259.9	\$262.2	\$243.4	\$259.4
<u>CLAIMS COLLECTED</u>						
FRAUD	\$69.6	\$64.0	\$62.6	\$60.9	\$58.0	\$57.9
HOUSEHOLD ERROR	\$115.4	\$111.1	\$111.5	\$110.7	\$108.5	\$108.6
AGENCY ERROR	\$35.0	\$23.8	\$34.5	\$35.1	\$35.3	\$40.3
TOTAL	\$219.6	\$207.9	\$208.6	\$206.8	\$201.9	\$206.8
STATE SHARE OF COLL	\$47.4	\$44.6	\$44.2	\$43.5	\$42.0	\$42.0
FNS SHARE OF COLL	\$172.2	\$163.3	\$164.4	\$163.3	\$159.9	\$164.8
<u>COLLECTIONS BY COLLECTION METHOD</u>						
RECOUPED	\$79.7	\$81.0	\$88.1	\$99.1	\$101.5	\$96.8
FEDERAL COLL	\$100.8	\$79.4	\$75.0	\$69.8	\$63.2	\$74.4
OTHER	\$39.1	\$47.4	\$45.5	\$37.9	\$37.1	\$35.6
TOTAL	\$219.6	\$207.9	\$208.6	\$206.8	\$201.9	\$206.8
<u>AVERAGE DOLLAR AMOUNT PER CLAIM FOR NEW CLAIMS ESTABLISHED (ACTUAL DOLLARS)</u>						
FRAUD	\$999	\$1,105	\$1,082	\$1,149	\$1,208	\$1,194
HOUSEHOLD ERROR	\$469	\$461	\$445	\$444	\$512	\$637
AGENCY ERROR	\$243	\$229	\$220	\$235	\$232	\$241
ALL CLAIMS	\$430	\$393	\$380	\$397	\$432	\$449

TOTALS MAY NOT ADD DUE TO ROUNDING.

SOURCE: FNS-209/FNS FEDERAL DEBT COLLECTIONS BIWEEKLY COLLECTION REPORT

DATA AS OF: 02/07/07

END NOTES

State Participation and Issuance

Participation data comes from the FNS-388 reports and issuance data comes from the FNS-46. Average monthly participation and household participation in this report may not add for the national total due to rounding. The total participation data in this report is the average monthly participation from all systems for the fiscal year (12-month average). However, on the pages providing the breakdown of the participation data by benefit type the report provides the average monthly participation for the number of months that particular issuance system operated during the year to show the actual monthly participation when that benefit type was used. Not all benefit types were in operation for all 12 months as food packages ended in one state during the year. Because the number of operating months varies by system and by State, the breakdown participation numbers by issuance system do not always add up to the total participation monthly average in all States.

Negative coupon issuance occurs when coupons are returned.

Administrative Costs

Administrative Cost data cited in this section is derived from the SF-269; monthly participation data comes from the FNS-388.

Fair Hearings

Fair Hearings data cited in this section is derived from the FNS-366B.

Fraud Investigations, Prosecutions, and Administrative Disqualification Hearings

Fraud Investigations, Prosecutions, and Administrative Disqualification Hearings data cited in this section is derived from the FNS-366B.

Disqualified Recipients – Federal Data Base Status

The data cited in this section is derived from the Disqualified Recipient Subsystem (DRS) - a Federal system of records that is used to identify individuals with a prior disqualification record for penalty determination purposes and individuals who are currently serving a disqualification period from another State. DRS includes both current year and historical disqualifications.



END NOTES

Recipient Claims

Claims data cited in this section is derived from the FNS-209; Federal debt collection data is derived from the FNS Federal Debt Collection Biweekly Collection Report. All recoupment amounts are included in collections data.

Data on new claims established is included in Tables 22, 23 and 24. When referring to data in these tables it should be noted that some States show no or low fraud claims newly established because they establish such claims as household error and subsequently transfer the claim to fraud after the court or hearing officer's determination. Therefore we recommend that the data in Tables 16, 18, and 20 (amount of fraud determined from prosecutions and administrative disqualification hearings and number of fraud determinations) be used as a better measure of the amount of fraud claims ultimately established. Data included in Table 27 (Recipient Claims Collected) includes total claims recouped as well as Federal Debt Collection amounts and other means of collection employed by State agencies.

Calculations for other means of collection employed by State agencies include all State methods except for recoupment and Federal collections from the Treasury Offset Program minus all refunds and negative adjustments.

Calculations for Federal Debt Collection amounts include Treasury Offset Program collections but not voluntary payments and offset fees paid by the client. Totals represented are for calendar year 2005 – however 98% of Federal collections occurred during FY 2005. Some offsets are subject to refunds.

Rankings of Participation and Issuance

Please refer to the explanations above for the sources of various data cited in this section. Note that totals for persons and households may not add due to rounding.

Comparison to Prior Years

Please refer to the explanations above for the sources of various data cited in this section.

