

SNAKE-SALMON FIRE MANAGEMENT LOCAL OPERATING PLAN



**PAYETTE, NEZ PERCE, WALLOWA-WHITMAN and CLEARWATER
NATIONAL FORESTS, CRAIG MOUNTAIN SUPERVISORY AREA of IDAHO
DEPARTMENT of LANDS, and COEUR D'ALENE DISTRICT of BUREAU OF
LAND MANAGMENT**

July 14, 2011

Table of Contents

- I. Introduction**
- II. Objectives and Policy**
 - 1. Objectives
 - 2. Policy
- III. Management of Escaped Wildfires on the Idaho Portion of the Hell's Canyon National Recreation Area (HCNRA)**
- IV. Annual Operations Plan**
 - 1. Operational Procedure
 - 2. Obligations
 - 3. Mobilization Plan and Forest Aviation Plan Distribution
 - 4. General
- V. Approval**

Appendix A: Fire Suppression Resources and Contact Lists

- Wallowa-Whitman National Forest
- Nez Perce & Clearwater National Forest
- Payette National Forest
- Idaho Department of Lands, Craig Mountain Supervisory Area
- Bureau of Land Management – Cottonwood Field Office – Coeur d'Alene District

Appendix B: Standard Channels and Tones

- Wallowa-Whitman National Forest
- Nez Perce & Clearwater National Forest
- Payette National Forest
- Idaho Department of Lands, Craig Mountain Supervisory Area

Appendix C: Lead Agency Administrator Roles and Responsibilities for Incident Management

Appendix D: Process for Management of Wildland fires in HCNRA

Introduction

This plan has been prepared to supplement and update the original report approved in May 1970. Personnel at all levels need to have a thorough understanding of the objectives, policies, and operational procedures of the cooperative effort currently in effect between the Clearwater, Nez Perce, Payette, Wallowa-Whitman National Forests, Idaho Department of Lands and BLM – Coeur D’Alene District.

This plan contains items that are relatively long term and, hopefully, static. It also provides an Annual Operations Plan that will spell out the day-to-day operations of the agreement. The plan will be subject to review and signatures prior to each fire season.

Authority for this agreement is referenced in the Idaho Cooperative Fire Protection and Stafford Act Response Agreement (Forest Service Agreement number 07-FI-11015600-087) which expires December 31, 2012 and which includes all parties to this Operating Plan.

II. Objectives and Policy

1. Objectives

- A. To emphasize that public and firefighter safety continues to be the top priority; once firefighting personnel are committed to an incident, their safety becomes the number-one concern.
- B. To provide wildland fire management activities in the safest and most cost effective manner as directed by agency policies, across Forest, State and Regional administrative boundaries.
- C. To meet wildland fire direction (including prescribed fire and wildland fire) as defined and developed in respective agency policies.

2. Policy

- A. The “closest forces” concept will be utilized regardless of administrative boundaries.
- B. Within the agreement area, each unit may provide initial action, local suppression support, and prescribed fire resources.
- C. Idaho Department of Lands appropriate management response actions will be limited to suppression activities consistent with agency policy when utilized on wildland fires that are being managed for multiple objectives.
- D. Whenever possible, conduct joint training.
- E. Coordinate fire prevention operations, including implementation of statewide or local public use restrictions and closures.
- F. Agree to manage as “complex” adjoining incidents across Regional boundaries under a single Incident Management Team where feasible.
- G. Coordinate any boundary air operations between the agreement area cooperators.

III. Management of Wildland Fires in the Idaho Portion of the HCNRA

At such time, and when the Wallowa-Whitman determines it be most efficient, wildfires on the Idaho portion of the HCNRA may be managed by either the Nez Perce or Payette National Forests. Appendix D, attached to this Agreement is the process that will be used in these situations.

IV. Annual Operating Plan

1. Operational Procedure

A. Information Exchange

1. Information Exchange: A complete and current information flow between the various units and organization levels is the key to the success of the entire operation.
2. Unit to Unit: Dispatch Centers will exchange resource status information daily, with an update as needed.
3. Fire Staff, FMO, Duty Officers, Center Managers: An escalating coordination schedule based on fire activity from monthly, weekly, to daily is expected.
 - a. Public Affairs Officers (PAO) – Fire Staffs are responsible for keeping PAO's informed of escalating fire activity.
 - b. Unit PAO's are to coordinate information on a regular basis during on going fire activity.
4. Forest to Region: Dispatch centers will notify their respective GACCs as to the mobilization of National Resources in addition to whenever any significant fire activity is taking place, or when major activity is impending.

B. Initial Attack

1. During initial attack the agency with protection responsibility will be the lead agency unless a decision to do otherwise is made and communicated to all parties.
 - a. Initial attack (IA) resources will report back to the lead agency dispatch center. When unable to contact the lead agency dispatch center, IA resources will establish contact with another dispatch center and request coordination of communication.
 - b. In boundary fire situations, where uncertainty may exist, dispatch centers will coordinate initial attack response with each other.
2. When there is a smoke report within the river corridors initial attack activities will be communicated and coordinated between:
 - a. the involved dispatch centers
 - b. the involved FMO's/duty officers
3. When resources are committed to an incident within the river corridors daily communication/coordination is expected between:
 - a. the involved dispatch centers
 - b. the involved FMO's/duty officers
4. Orders for resources will be placed, received, and dispatched by the dispatch centers. GACCs will be notified of action taken as soon as practical.

C. Extended Attack

When an incident appears to be moving into extended attack, there is a heightened need for communication/coordination. On-going information sharing needs are to be coordinated and decisions communicated to ensure safe and efficient operations.

Dispatch Office to Dispatch Office

- a. The Incident Commander will coordinate with the involved FMO's/Duty Officers/Lead Dispatcher/Line Officers to determine which dispatch center will take the lead, based on anticipated logistical support needs and communication.
 - b. Follow established procedures for assigning incident numbers and "P" codes.
 - c. Incident handoff – Once Fire Management makes the decision to transfer management of the incident from one Agency to another the appropriate Dispatch Centers will need to coordinate the transfer of dispatching via ROSS, IA documentation and resource status. Timing of the transfer will be in concurrence with the Incident IC and Fire Management of the receiving and transferring Agencies.
2. FMO, Duty Officer, Line Officer
 - a. Determine ability to logistically support the incident, coordinate resource availability and identify resource concerns.
 - b. Inform Line Officers of the developing situation and engage them in the decisions.
 - c. Identify lead agency, camp location, assign resource advisor(s)
 - d. Communicate decisions back to dispatch centers.
 3. Line Officer to Line Officer
 - a. Communicate with the involved Line Officer anytime there is a major change in the fire activity.

D. Large Fire Coordination

When an incident or complex of incidents appear to be headed for long term management, information sharing between host units is critical.

1. Opportunities to group individual incidents into a complex are to be coordinated between Fire Staff's, Dispatch Centers and Agency Administrators.
2. Support to border fires between units and regions needs to be coordinated and follow guidelines in Chapter 20 of the National Mobilization Guide.
3. Lead Agency Administrator representative roles and responsibilities (Appendix C).
 - a. When two or more units are involved with an incident or incidents the agencies may agree to designate a lead agency representative to provide a single point of contact.
 - b. The lead agency representative will coordinate with all other jurisdictional agencies, attend public meetings, know local stake holders, coordinate WFS/WFDSS development and revision and daily validation, sign delegation of

authority letters, coordinate with the Incident Business Advisor and review cost apportionment agreements and coordinate with MAC groups.

E. Third-Party Orders

Each Forest will not perform any "third-party" orders, i.e., Payette will not order Boise NF resources for a Nez Perce fire.

F. Prescribed Fire Support

Prescribed fire support shall follow the same protocols as listed for fire suppression activities as listed above.

G. Logistical Support Coordination

Consideration will be given to adjoining unit's ability to provide for incident logistical support functions (Reference Appendix D - Process for Management of Wildland Fires in Hells Canyon N.R.A.).

H. Communications Coordination

Each agency agrees to share their assigned radio frequencies for use within the boundaries of the Snake-Salmon Fire Management Agreement for the primary objective of fire fighter and public safety.

Reference Appendix B

Resource Contacts

Reference Appendix A

J. Air Operations Contacts

Reference Appendix A

1. Obligations

Agencies will exchange daily obligations incurred for aircraft, staffing and equipment of the host unit, as requested.

2. Mobilization Plan and Forest Aviation Plan Distribution

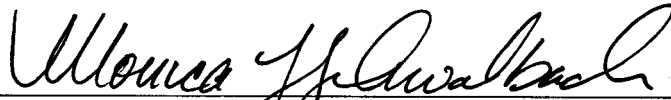
Each agency will make available to the other agreement cooperators copies of their Mobilization Plan and Aviation Plan.

3. General

The Nez Perce National Forest will host the 2012 Annual Operating Plan meeting. The location and date for the meeting will be determined at a later date.

Approval

Any changes or amendments to this plan will require approval of the parties listed below.
The authority and format of this agreement have been reviewed and approved for signature.

Date: 

MONICA SCHWALBACH
Forest Supervisor, Wallowa-Whitman National Forest

Date: _____
KEITH B. LANNOM
Forest Supervisor, Payette National Forest

Date: _____
RICK BRAZELL
Forest Supervisor, Clearwater/Nez Perce National Forest

Date: _____
JAY L. SILA
Area Supervisor, Craig Mountain Supervisory Area

Date: _____
WILL RUNNOE
District Manager, Cottonwood District BLM

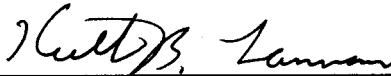
Approval

Any changes or amendments to this plan will require approval of the parties listed below.
The authority and format of this agreement have been reviewed and approved for signature.

Date:

MONICA SCHWALBACH
Forest Supervisor, Wallowa-Whitman National Forest

Date: 07/22/11



KEITH B. LANNOM
Forest Supervisor, Payette National Forest

Date: 7/27/2011



RICK BRAZELL
Forest Supervisor, Clearwater/Nez Perce National Forest

Date:

JAY L. SILA
Area Supervisor, Craig Mountain Supervisory Area

Date:

WILL RUNNOE
District Manager, Cottonwood District BLM

Approval

Any changes or amendments to this plan will require approval of the parties listed below.
The authority and format of this agreement have been reviewed and approved for signature.

Date:

MONICA SCHWALBACH
Forest Supervisor, Wallowa-Whitman National Forest

Date:

KEITH B. LANNOM
Forest Supervisor, Payette National Forest

Date:

RICK BRAZELL
Forest Supervisor, Clearwater/Nez Perce National Forest

Date:

 7/22/11

JAY L. SILA
Area Supervisor, Craig Mountain Supervisory Area

Date:

WILL RUNNOE
District Manager, Cottonwood District BLM

Approval

Any changes or amendments to this plan will require approval of the parties listed below.
The authority and format of this agreement have been reviewed and approved for signature.

Date:

MONICA SCHWALBACH
Forest Supervisor, Wallowa-Whitman National Forest

Date:

KEITH B. LANNOM
Forest Supervisor, Payette National Forest

Date:

RICK BRAZELL
Forest Supervisor, Clearwater/Nez Perce National Forest

Date:

JAY L. SILA
Area Supervisor, Craig Mountain Supervisory Area

Date:

7/18/2011



WILL RUNNOE
District Manager, Cottonwood District BLM

LIST OF APPENDICES:

Appendix A - Fire Suppression Resources/Integrated Air Operations

- Wallowa-Whitman National Forest
- Nez Perce & Clearwater National Forests
Payette National Forest
Idaho Dept of Lands, Craig Mountain Protective District
Bureau of Land Management – Cottonwood Field Office – Coeur d’Alene District

Appendix B - Standard Channels and Tones

- Wallowa-Whitman National Forest
- Nez Perce & Clearwater National Forests
- Payette National Forest
- Idaho Dept of Lands, Craig Mountain Supervisory Area

Appendix C - Lead Agency Administrator Roles and Responsibilities for Incident Management

Appendix D - Process for Management of Wildland Fires in HCNRA

APPENDIX A
SNAKE-SALMON FIRE MANAGEMENT AGREEMENT
INTEGRATED AIR OPERATIONS

INTRODUCTION:

Agency and forest boundary fires require increased coordination and management emphasis for integrated air operations.

Past indications have raised concerns caused by overlapping air operations when adjoining units respond to fires near their boundaries. Some of the areas of concern include:

1. Units-Region communication coordination
2. Adjacent unit operations coordination
3. Flight corridors
4. Assigned air-to-air frequencies
5. Implementation of Temporary Flight Restrictions (TFR's)
6. Unit-to-Unit Dispatch Coordination

THE COOPERATORS AGREE TO THE FOLLOWING:

- A. A corridor 5 miles within each adjoining unit boundary will be identified as an area of joint concern.
- B. The dispatch center and/or aircraft will notify the dispatch centers of the adjoining units when aircraft operations are being initiated within the corridor and when aircraft operations have ended. This may include detection and routine patrol flights as well as any extended aircraft operations (helicopter logging, helicopter sling projects, Forest pest management reconnaissance, etc.) where aircraft would be operating within the defined corridor. The established air to air frequency for flight coordination between aircraft is 122.9. If a TFR is established for an incident, the new frequency will be shared with all aviation resources.
- C. When aircraft resources from adjoining units are being committed to the same general area within the corridor:
 - 1 Initiation of a joint or shared air attack will be considered.
 2. If adjacent unit aircraft are known to be in the boundary corridor, the approaching aircraft will establish air-to-air contact before entering the general area.
 3. For an incident in progress, use of aircraft will be coordinated between adjoining dispatch centers.

4. Ensure the specifications described for a Fire Traffic Area (FTA) are adhered to.
(www.fs.fed.us/fire/aviation)
- D. To avoid conflicts while dispatching aircraft off-unit during fire season, the dispatch center will coordinate with the other dispatch centers concerning established TFR within their respective zones.
- E. The identification of joint-use, congested airspace or the possible need for a TFR within or overlapping the five mile corridor area will be negotiated between adjoining Dispatch Centers with input from the Unit Aviation Officers to establish safety control measures, or implement a TFR. The use of an area defined by terrain features (e.g., rim-to-rim concept) should be strongly considered when establishing incident management, initial attack, or airspace frequency areas. If possible, these areas should also be aligned with the TFR dimensions.
- F. For joint-use or congested airspace situations, the involved Dispatch Centers will identify a common aircraft frequency. This could be one of the unit's assigned air-to-air frequencies, or a discrete frequency if a TFR is established.
- G. During large fire operations, the initial attack area assigned to an Incident Management Team and associated essential air travel routes within the boundary areas will be shared with the adjoining dispatch centers.
- H. The Dispatch Coordinators will be responsible for keeping their respective Fire Staff and Unit Air Officers informed of emerging fire situations in adjoining areas.

It is important that the Dispatch Center and Unit Aviation Officer input be included in Fire Staff considerations for management of adjoining project fires.

FIRE SUPPRESSION RESOURCES/INTEGRATED AIR OPERATIONS

WALLOWA-WHITMAN NATIONAL FOREST
2011

| RESOURCE | LOCATION | TYPE | SCHEDULE |
|-----------------------------------------------|-----------------------------|------------------------------------------------------|----------------------|
| HELICOPTERS | Sled Springs | T-2 | 06/07/11 – 10/04/11 |
| | W-W National Ship | T-1 | 07/15/11 – 10/27/11 |
| SMOKEJUMPERS | None Use closest forces. | | |
| RAPPELLERS CWN F/W AIRCRAFT | Sled Springs | 18 Rappellers | 06/01/11 |
| | Baker City | Elkhorn Aviation Cessna 182, 414, 206 | 04/02/11 |
| | LaGrande | Eagle Cap Aviation 3 - C-337, Maule, AC-685 | 04/02/11 |
| | Enterprise | Spence Air Service C-206 | 04/02/11 |
| Exclusive Use "Lagrande Air Attack" | | Pondersoa Aviation Aero Commander 500S N4QS | 07/04/11 |
| CREWS (20 Person) | LaGrande | LaGrande IHC Union IHC | 06/01/11 06/01/11 |
| | Wallowa-Whitman | Type 2 Agency Crew | |
| LOOKOUTS | Wallowa Fire Zone | Harl Butte Hat Point Heaven's Gate Red Hill | |
| | Burnt Powder FZ | Summit Point | 07/01/11 |
| ENGINES | Enterprise | Type 6- 3ea Type 4- 1ea | 6/14/11 6/14/11 |
| | Pine | Type 6- 1ea | 6/14/11 |
| CREWS (IA) | Enterprise | (1) 10 person IA | 6/14/11 |
| | Pine | (1) 10 person IA | 6/14/11 |

**Wallowa-Whitman N.F.
Fire Directory
2011**

| | | |
|---------------------------------------------------------------------------------------------------------------------------------------------------------------------------------------------------------------------|------------------------------------------------------------------------------------------------------------------------------------|-------------------------------------------------------------------------------------------------------------------------------------------------------|
| <p>Blue Mountain Interagency Dispatch Center 59973 Downs Rd LaGrande, Oregon 97850 http://bmidc.org/index.shtml email: orbmc@dms.nwcg.gov</p> | <p align="center">Hours of Operation 0700-1800 541-963-7171 After Hours 541-786-5457 Fax – 541-663-0533</p> | <p align="center">Area Fire Cache 541-975-5420 Fax – 975-5471 Regional Air Tanker Base 541-975-5490 Fax – 541-663-0824</p> |
| <p align="center">Person</p> | <p align="center">Title</p> | <p align="center">Phone</p> |
| <p>Monica Schwalbach mschwalbach@fs.fed.us</p> | <p>Forest Supervisor</p> | <p>541-523-1201 Office 541-519-0277 Cell</p> |
| <p align="center">Vacant</p> | <p>Deputy Forest Supervisor</p> | <p>541-523-1203 Office 541-519-5538 Cell</p> |
| <p>Bret Ruby bruby@fs.fed.us</p> | <p>Fire Staff</p> | <p>541-523-1415 Office 541-519-8280 Cell</p> |
| <p>Noel Livingston nlivingston@fs.fed.us</p> | <p>Assistant Fire Staff - Operations</p> | <p>541-523-1470 Office 541-519-8267 Cell</p> |
| <p>Steve Hawkins sbhawkins@fs.fed.us</p> | <p>Assistant Fire Staff - Fuels</p> | <p>541-523-1262 Office 541-519-4878 Cell</p> |
| <p>Tom Fitzpatrick tfitzpatrick@fs.fed.us</p> | <p>Forest Safety Officer</p> | <p>541-523-1977 Office 541-519-5424 Cell</p> |
| <p>Judy Wing jwing@fs.fed.us</p> | <p>Public Affairs Officer</p> | <p>541-523-1246 Office 541-519-4623 Cell</p> |
| <p>Mary DeAgüero mdeaguero@fs.fed.us</p> | <p>District Ranger - HCNRA</p> | <p>541-426-5501 Office 541-805-9537 Cell</p> |
| <p>Nathan Goodrich ngoodrich@fs.fed.us</p> | <p>FMO – Wallowa Valley FZ</p> | <p>541-426-5583 Office 541-263-0870 Cell</p> |
| <p>Jeff Tomac jtomac@fs.fed.us</p> | <p>District Ranger – Whitman District</p> | <p>541-523-1901 Office 541-519-4829 Cell</p> |
| <p>Willy Crippen wcrippen@fs.fed.us</p> | <p>FMO – Burnt Powder FZ</p> | <p>541-523-1906 Office 541-910-3143 Cell</p> |
| <p>Kurt Wiedenmann kwiedenmann@fs.fed.us</p> | <p>District Ranger – LaGrande District</p> | <p>541-962-8582 Office 541-910-0265 Cell</p> |
| <p>Trish Wallace pwallace@fs.fed.us</p> | <p>FMO – Grande Ronde FZ</p> | <p>541-962-8553 Office 541-805-9273 Cell</p> |
| <p>Miles Hancock mhancock@fs.fed.us</p> | <p>Unit Aviation Officer</p> | <p>541-975-5418 Office 541-786-1357 Cell</p> |
| <p>Renaë Crippen rcrippen@fs.fed.us</p> | <p>BMIDC Center Mgr</p> | <p>541-975-5402 Office 541-910-3142 Cell</p> |
| <p>Bob Kausler bkausler@fs.fed.us</p> | <p>BMIDC Asst. Center Mgr</p> | <p>541-975-5401 Office 541-910-7049 Cell</p> |
| <p>Kris Schmidt krisschmidt@fs.fed.us</p> | <p>BMIDC Asst. Center Mgr</p> | <p>541-975-5403 Office 541-993-4999 Cell</p> |
| <p>Josh Hewitt jjhewitt@fs.fed.us</p> | <p>IA Floor Lead</p> | <p>541-975-5414 Office 541-910-2102 Cell</p> |
| <p>Jerry Garrett jgarrett@fs.fed.us</p> | <p>IA Floor Lead</p> | <p>541-975-5415 Office 503-577-8193 Cell</p> |
| <p>Cinda Fratzke cwfratzke@fs.fed.us</p> | <p>Logistics Floor Lead</p> | <p>541-975-5406 Office 541-663-6556 Cell</p> |
| <p>Howard Sievers hsievers@fs.fed.us</p> | <p>Cache Manager</p> | <p>541-975-5420 Office 541-962-5453 Cell</p> |
| <p>Russ Hurst rhurst@fs.fed.us</p> | <p>Air Tanker Base Manager</p> | <p>541-975-5490 Office 541-786-1273 Cell</p> |

**NEZ PERCE AND CLEARWATER NATIONAL FORESTS
2011**

| RESOURCE | LOCATION | TYPE | SCHEDULE |
|--------------------------------------------------------------|------------------------------------|--------------------------------------------------------------------------------------------------------------------------------------------------------------|------------------------------|
| Exclusive Use Helicopter + 10 person Helitack Crews | Grangeville Musselshell WC | Hillcrest – Bell 206L-4 – N662H Hillcrest – Bell 206L-4 – N767H | 06/13 – 9/20 7/11 – 9/30 |
| National Type 1 Helicopter | Prescott AZ Grangeville | Helicopter Transport Services Inc. Sikorsky CH-54 (N715HT) HT-715 | 5/1 – 7/29 7/30- 10/27 |
| CWN Helicopters | Lewiston | Hillcrest – 206B-3 – 2 ea. | CWN |
| Smokejumper Aircraft | Grangeville | TBD: New contract for FY11. Update prior to printing | 05/29 – 9/20 |
| Smokejumpers | Grangeville | 32 | |
| ATGS w/ T1 Platform | Grangeville | Ponderosa Aviation – 9WA Aero Commander 500S | 6/13 – 9/20 |
| Light Fixed Wing Aircraft Exclusive Use | Grangeville | 6 PAX w / T2 ATGS avionics – Backcountry Aviation – Cessna 206 – N71967 4 PAX w / T2 ATGS avionics – Backcountry Aviation – Cessna 205 – N4801U | 6/13 – 9/24 7/4 – 9/9 |
| IDL Single Engine Air Tankers Exclusive Use Helicopter | Grangeville Craigmont | T-406 and T-194 (need to confirm with Jim Newton) Hillcrest- Bell206L3 – N661H | 7/5 to 9/12 7/1 to 9/20 |
| Crews (20 Person) | Grangeville Potlatch Orofino | Type 2 or 2IA – Grangeville Interagency Crew Type 2IA – Palouse Crew Type 2 – North ID Correctional Facility | |
| Agency Engines | | Type 4 – 4 each Type 6 – 12 each | |

| Grangeville Interagency Dispatch Center 104 Airport Road Grangeville, ID 83530 | | Fire Telephone Number 208-983-6800 FAX NUMBER 208-983-4065 | | |
|--------------------------------------------------------------------------------------|-----------------|-----------------------------------------------------------------------------|--------------|--------------|
| EMPLOYEE | CITY, STATE | WORK | CELL | RESIDENCE |
| CREW, Dennis IA Center Manager | Grangeville, ID | 208-983-6801 | 208-451-0123 | 208-983-9263 |
| LOMBARDO, Julie Asst. Center Manager- Logistics | Grangeville, ID | 208-983-6802 | 208-983-8155 | 208-983-0021 |
| Vacant Asst. Center Manager- Initial Attack | Grangeville, ID | 208-983-6810 | | |
| LAING, Linda Aircraft Dispatcher | Grangeville, ID | 208-983-6803 | N/A | 208-983-2390 |
| NELSON, LeAnn Asst. Aircraft Dispatcher | Grangeville, ID | 208-983-6804 | N/A | 208-926-7391 |
| HAMMAN, Amanda Intelligence Dispatcher | Grangeville, ID | 208-983-6807 | 208-739-1408 | 208-739-1408 |
| SKINNER, Trisha Lead IA Dispatcher – North Zone | Grangeville, ID | 208-983-6813 | 208-935-5169 | 208-935-0105 |
| WILLIAMS, Margaret Lead IA Dispatcher – East Zone | Grangeville, ID | 208-983-6817 | 208-315-2666 | 208-315-2666 |
| HENDREN, Joslyn Asst. IA Dispatcher – West Zone | Grangeville, ID | 208-983-6816 | 208-816-1130 | 208-926-9044 |
| BRAZELL, Rick Forest Supervisor | Grangeville, ID | 208-983-7000 208-476-8326 | 208-691-7061 | N/A |
| RAU, Ralph Deputy Forest Supervisor | Grangeville, ID | 208-983-7017 | 208-315-3851 | 208-983-0730 |
| LIPPINCOTT, Bob Zone Fire Staff Officer | Grangeville, ID | 208-983-4066 | 208-983-5672 | 208-935-2246 |
| STAATS, Roger Deputy Zone Fire Staff Officer | Orofino, ID | 208-476-8203 | 208-983-5674 | 208-743-9823 |
| ACTON, Willy Zone Aviation Officer | Grangeville, ID | 208-983-9571 | 208-507-0942 | 208-315-1925 |
| NELSON, Randy Smokejumper Unit Manager | Grangeville, ID | 208-983-9586 | 208-983-8152 | 208-983-1920 |
| Vacant ATGS/Fixed Wing Coordinator | Grangeville, ID | 208-983-9583 | | |
| Ruoti, Andre Airtanker Base Manager | Grangeville, ID | 208-983-9577 | 208-507-0643 | N/A |
| SMITH, Laura Public Affairs Spec. - NPF | Grangeville, ID | 208-983-5143 | 208-507-1828 | 208-983-0198 |
| MURPHY, Elayne Public Affairs Spec. - CWF | Orofino, ID | 208-476-8200 | 208-660-2058 | 208-926-7464 |
| CRAWFORD, Deanna Incident Business Specialist | Grangeville, ID | 208-983-4096 | 208-451-4207 | 406-369-0683 |
| OSEN, Tom District Ranger | Slate Creek, ID | 208-839-2103 | 406-660-1017 | 208-839-9908 |
| CHAFFEE, Kevin Fire Management Officer | Slate Creek, ID | 208-839-2141 | 208-507-0174 | 208-962-3559 |
| NEVIUS, Terry District Ranger | Elk City, ID | 208-842-2140 | 208-983-8182 | 208-842-2953 |
| BRANSFORD, Josh Fire Management Officer | Elk City, ID | 208-842-2123 | 208-553-8547 | 208-842-2920 |

**FIRE SUPPRESSION RESOURCES
PAYETTE NATIONAL FOREST
2011**

| RESOURCE | LOCATION | TYPE/NUMBERS | SCHEDULE |
|-----------------------------------------|--------------------------------------------------------|----------------------------------------------------------------------------------------|--------------------------------------------------------|
| HELICOPTERS | McCall Krassel Price Valley | 1 Type 1 S-64 Skycrane 1 Type 3 Bell 407 2 Type 2 Bell 212 HP's | 06/15/11 06/13/11 05/17/11 05/31/11 |
| HELITACK | Krassel | 16 | 06/20/11 |
| RAPPELLERS | Price Valley | 24 | 06/18/11 |
| SMOKEJUMPER AIRCRAFT | McCall | 2 Twin Otters | 04/14/11 05/23/11 |
| SMOKEJUMPERS | McCall | 70 | 06/7/11 |
| CONTRACT FIXED WING AIRCRAFT | McCall Aviation | (2) Cessna 206's | 05/15/11 |
| SEATS | McCall | (2) Air Tractor 802's | 07/06/11 |
| CREWS | McCall Council | (1) 10 person handcrew (1) 10 person handcrew | 05/03/11 05/10/11 |
| ENGINES | McCall New Meadows Council Brownlee Weiser | (1) Type 4, 1 Type 6 (1) Type 4 (1) Type 4, 1 Type 6 (1) Type 6 (1) Type 4 | 05/3/11 05/3/11 05/10/11 05/10/11 05/10/11 |
| LOOKOUTS | East Zone Central Zone West Zone | Sheepeater Carey Dome, Hershey Pt Horse Mountain | 06/28/11 06/28/11 06/28/11 |

| Payette National Forest 800 West Lakeside Avenue McCall ID 83638 | | Fire Telephone Number 208-634-2757 Fire FAX 208-634-5782 | | |
|---------------------------------------------------------------------------------|-----------------|---------------------------------------------------------------------|--------------|--------------|
| EMPLOYEE | CITY, STATE | WORK | CELL | RESIDENCE |
| Keith Lannom Forest Supervisor | McCall, ID | 208-634-0701 | | |
| BROWN, Gary Fire Staff | McCall, ID | 208-634-0710 | 208-634-6790 | 208-634-2216 |
| SKELTON, Randy Deputy Fire Staff | McCall, ID | 208-634-0746 | 208-634-6784 | |
| PHILLIPS, Gary Forest Fuels Specialist | McCall, ID | 208-634-0831 | 208-634-6785 | 208-628-3940 |
| MARTIN, Alexis Forest Fire Planner | McCall, ID | 208-634-0747 | 208-634-9428 | 208-634-1361 |
| PARKER, Jamie Incident Business Specialist | McCall, ID | 208-634-0739 | 509-675-0469 | 509-675-0469 |
| SHADDLE, Matt Forest Aviation Officer | McCall, ID | 208-634-0768 | 208-634-9347 | 208-347-3337 |
| ROMERO, Frankie Smokejumper Unit Manager | McCall, ID | 208-634-0383 | 208-634-6786 | 208-634-7323 |
| BASSET, Michael McCall Tanker Base Manager | McCall, ID | 208-634-0357 | | |
| HURD, Monte West Zone Fire Management Officer | Weiser, ID | 208-549-4210 | 208-741-9616 | 208-549-1152 |
| LESCH, Greg Acting Weiser District Ranger | Weiser, ID | 208-549-4201 | 208-741-0511 | 208-549-0413 |
| LEFEVRE, Nate Weiser District AFMO | Weiser, ID | 208-549-4211 | 208-634-9287 | 208-549-1715 |
| LESCH, Greg Council District Ranger | Council, ID | 208-253-0101 | 208-741-0511 | 208-549-0413 |
| SCHULTZ, Tom Council AFMO | Council, ID | 208-253-0111 | 208-741-9611 | |
| VINNING, David Central Zone Fire Management Officer | New Meadows, ID | 208-347-0310 | 208-741-9617 | 208-347-2301 |
| PIERSON, Kim New Meadows District Ranger | New Meadows, ID | 208-347-0301 | 208-407-8369 | |
| DINES, Rod New Meadows AFMO | New Meadows, ID | 208-347-0311 | 208-634-9442 | 208-634-2810 |
| KLINGER, Lisa McCall District Ranger | McCall, ID | 208-634-0401 | 208-634-9324 | |
| MORROW, Rob McCall District AFMO | McCall, ID | 208-634-0411 | 208-634-9429 | 208-634-8318 |
| BATES, Tom East Zone Fire management Officer | McCall, ID | 208-634-0610 | 208-634-9290 | |
| BOTELLO, Anthony Krasel District Ranger | McCall, ID | 208-634-0601 | | |
| BAUMER, Todd Krasel AFMO | McCall, ID | 208-634-0611 | 208-634-9410 | 208-634-3948 |
| MURPHY, Gary Dispatch Center Manager | McCall, ID | 208-634-0395 | 208-634-6783 | 208-634-4341 |
| NICHOLSON, Ann Assistant Center Manager | McCall, ID | 208-634-0396 | 208-634-6781 | |
| PRAMUK, Laura Public Affairs Officer | McCall, ID | 208-634-0784 | 208-634-6945 | 208-630-8843 |

| 2011 DISTRICT FIRE PLAN CRAIG MOUNTAIN PROTECTIVE DISTRICT PERSONNEL DIRECTORY - DISTRICT PERSONNEL | | | |
|--------------------------------------------------------------------------------------------------------------------|-------------------------------------|---------------------------------------|-----------------------|
| PERSONNEL | TITLE | LOCATION | PHONE |
| Altman, Samantha | Administrative Assistant | Nezperce | 937-9632/816-0264 |
| Christiansen, Clark | Private Forestry Specialist | Craigmont | 937-1051/717-8331 |
| Pentzer, Rob | Resource Supervisor/Fire Warden | Winchester | 924-7742/420-0056 |
| Phillips, Gene | Resource Specialist/Timber | Craigmont | 924-6425/790-2630 |
| Sila, Jay | Area Manager | Lewiston | 921-7316 |
| Tevebaugh, Tim | Resource Specialist/Asst Warden | Craigmont | 507-1750 |
| Willson, JeAnn | Resource Specialist/Timber | Reubens | 924-7203 |
| Miller, Jeremiah | Resource Specialist/Helicopter Mgr. | Winchester | 924-6427/330-204-4356 |
| TEMPORARY PERSONNEL | | | |
| Allman, Alfred | Crew Foreman | Craigmont | 451-0581/Trailer |
| | Helicopter Manager | | 926-4971/553-8777 |
| CMT Office Phone # | 208-924-5571 | | |
| CMT BACK LINE # | 208-924-7417 | | |
| CMT BACK LINE # | 208-924-7810 | | |
| CMT BACK LINE # | 208-924-7811 | | |
| FEMA TRAILER | 208-924-6863 | | |
| FEMA TRAILER | 208-924-6824 | | |
| EQUIPMENT IN CRAIGMONT | | EQUIPMENT IN GRANGEVILLE | |
| 1 Type 3 Helicopter (61H) helibase 208-924-0052 2 Type 6 engines 1Type 5 engine | | 2 Single Engine Airtanker (406 & 194) | |

Bureau of Land Management – Cottonwood Field Office – Coeur d’Alene District

2011

All phone numbers are Idaho area code 208 unless otherwise noted.

| | | |
|-----------------------------------------------------------------------------------------|------------------------------------------------|----------------------------------------------------------|
| Cottonwood Field Office 1 Butte Drive Cottonwood, Idaho 83522 | Phone: 208-962-3245 Fax: 208-962-3275 | Office Hours: 7:45 to 4:30 M-F Pacific Time Zone |
| Contact | Position/Title | Phone: |
| William (Will) Runnoe wrunnoe@blm.gov | Field Manager | Office: 962-3256 Cell: 553-5695 Home: 983-6038 |
| Robbin Boyce rboyce@blm.gov | Assistant Field Manager | Office: 962-3793 Cell: 690-0447 Home: 509-663-2398 |
| Kristen Sanders ksanders@blm.gov | Fire Ecologist | Office: 962-3786 Cell: 559-2129 Home: 983-2473 |
| Mike Vander Pas mvanderpas@blm.gov | Fuels Technician | Office: 962-3792 Cell: 553-3755 Home: 962-7124 |
| | | |
| Coeur d’Alene District Office 3815 N. Schreiber Way Coeur d’Alene, ID. 83815-8362 | Phone: 208-769-5000 Fax: 208-769-5050 | Office Hours: 7:45 to 4:30 M-F Pacific Time Zone |
| Bruce Martinek bmartinek@blm.gov | District AFMO | Office: 769-5007 Cell: 818-4200 Home: 687-6976 |
| Mike Behrens mikebehrens@fs.fed.us | Interagency FMO BLM & IPNF | Office: 765-7499 Cell: 659-1392 |
| Mike Almas malmas@fs.fed.us | Deputy Forest FMO - IPNF | Office: 765-7494 Cell: 661-9548 |
| Gary Cooper gcooper@blm.gov | District Manager BLM Coeur d’Alene District | Office: 769-5040 Cell: 215-5799 |
| Lonnie Newton lnewton@blm.gov | Alternate Duty Officer - Fire Ecologist | Office: 769-5017 Cell: 755-9977 |
| Revised March 30, 2011- BM | | |

APPENDIX B

WALLOWA-WHITMAN NATIONAL FOREST
STANDARD CHANNELS AND TONES
2011

| Grande Ronde Fire Zone Repeaters: Call La Grande Dispatch | | | | |
|------------------------------------------------------------------|-------------------------|--------------------------|-------------|-----------|
| | RECEIVE FREQ | TRANSMIT FREQ | TONE | CG |
| Mt. Emily | 170.525 | 164.800 | 167.9 | 7 |
| Johnson Rock | 170.525 | 164.800 | 103.5 | 8 |
| | 170.525 | 164.800 | 151.4 | 9 |
| ODF-Emily-#2 | 151.2425 | 159.4050 | 131.8 | 3 |
| Wallowa Fire Zone: Call La Grande Dispatch | | | | |
| | RECEIVE FREQ | TRANSMIT FREQ | TONE | CG |
| Akers | 166.000 | 164.025 | 110.9 | 1 |
| Buckhorn | 166.000 | 164.025 | 123.0 | 2 |
| Howard | 166.000 | 164.025 | 131.8 | 3 |
| Lookout | 166.000 | 164.025 | 156.7 | 6 |
| | 166.000 | 164.025 | 167.9 | 7 |
| Pt. Prominence | 166.000 | 164.025 | 103.5 | 8 |
| ODF-Courtney | 151.4375 | 159.3975 | 131.8 | 3 |

| Burnt Powder Fire Zone: Call La Grande Dispatch | | | | |
|--------------------------------------------------------|-------------------------|--------------------------|-------------|-----------|
| | RECEIVE FREQ | TRANSMIT FREQ | TONE | CG |
| Beaver Ridge | 164.150 | 168.150 | 123.0 | 2 |
| Summit Point | 164.150 | 168.150 | 131.8 | 3 |
| Mt. Ireland | 164.150 | 168.150 | 136.5 | 4 |
| Table Rock | 164.150 | 168.150 | 146.2 | 5 |
| Sheep Mtn. | 164.150 | 168.150 | 156.7 | 6 |
| ODF-Beaver | 151.2425 | 159.4050 | 162.2 | 11 |

| NAME | FREQUENCY TX/RX |
|----------------------------------|------------------------|
| ODF FIRE TAC | 151.340 tone 156.7 |
| ODF Secondary TAC | 151.310 tone 156.7 |
| USFS FIRE TAC | 164.9625 |
| BLM TAC | 166.275 |
| AIR TO GROUND | Charlie – 167.625 |
| AIR TO GROUND | Oscar – 169.150 |
| AIR TO AIR | 133.225 |
| Air to Air (HCNRA) | 122.9 |
| Miscellaneous Frequencies | |
| Tanker Base Ramp | 123.975 |
| La Grande UNICOM | 122.80 |
| AWOS | 135.07 |

GRANGEVILLE INTERAGENCY DISPATCH CENTER

STANDARD INITIAL ATTACK GROUPS AND CHANNELS 2010

Group 10 Red River/Moose Creek

| Ch | Label: | Rec. Freq.: | Rec.CG: | Tx. Freq.: | Tone |
|----|-----------------------|-------------|---------|------------|-------|
| 1 | NPF -E Iron Mtn | 168.6750 | 000.0 | 169.9500 | 110.9 |
| 2 | NPF -E Anderson Butte | 168.6750 | 000.0 | 169.9500 | 123.0 |
| 3 | NPF -E Burnt Knob | 168.6750 | 000.0 | 169.9500 | 131.8 |
| 4 | NPF -E Oregon Butte | 168.6750 | 000.0 | 169.9500 | 136.5 |
| 5 | NPF -E Fog Mtn | 168.6750 | 000.0 | 169.9500 | 146.2 |
| 6 | NPF -E Shissler | 168.6750 | 000.0 | 169.9500 | 156.7 |
| 7 | NPF -E Gardiner | 168.6750 | 000.0 | 169.9500 | 103.5 |
| 8 | CWF -S Coolwater | 173.7625 | 000.0 | 166.5625 | 131.8 |
| 9 | AIR GUARD | 168.6250 | 000.0 | 168.6250 | 110.9 |
| 10 | EMS 2 ** | 155.2800W | 000.0 | 155.2800W | 000.0 |
| 11 | BITT SPOT | 168.7500 | 000.0 | 168.1500 | 156.7 |
| 12 | BITT HELL 1/2 | 169.1750 | 000.0 | 169.9750 | 136.5 |
| 13 | ID-CO-SHF -Pilot Knob | 154.1150W | 000.0 | 156.0150W | 146.2 |
| 14 | C-N A/G | 164.8625 | 000.0 | 164.8625 | 000.0 |
| 15 | COM USE 1 | 163.7125 | 000.0 | 163.7125 | 000.0 |
| 16 | COM USE 2 | 168.6125 | 000.0 | 168.6125 | 000.0 |

**Directions for use below

ALL FZ's are Narrow Banded unless noted W-Wide

When contacting State Communications via the radio for emergency purposes or for radio tests clearly identify yourself as "Clearwater (or Nez Perce) National Forest" and provide a unit number such as your individual National Forest radio call sign such as "Clearwater National Forest Unit 235".

The following are examples of possible justifications for annulling privileges to use the State Comm system.

- ❖ Violations of Federal Communications Commission (FCC) rules and regulations.
- ❖ Obstruction of State Comm.'s emergency operations, including over-riding transmissions or refusing to relinquish the Frequencies when ordered by State Comm.'s Communications Specialist.
- ❖ Any habitual non-emergency communications which would effectuate heavy traffic on emergency frequencies. (excluding flight following)
- ❖ Use of frequencies for purposes other than specified by State Comm or non-approved units.

Failure to adhere to these rules and guidelines will result in an investigation, and privileges may be revoked.

Group 9 Powell

| Ch | Label: | Rec. Freq.: | Rec.CG: | Tx. Freq.: | Tone |
|----|------------------------|-------------|---------|------------|-------|
| 1 | CLW -E DIRECT | 171.5750 | 000.0 | 171.5750 | 110.9 |
| 2 | CLW- E Beaver Ridge | 171.5750 | 000.0 | 172.3750 | 123.0 |
| 3 | CLW -E Diablo | 171.5750 | 000.0 | 172.3750 | 131.8 |
| 4 | CLW -E Bear Mtn. | 171.5750 | 000.0 | 172.3750 | 136.5 |
| 5 | CLW -N Rocky Pt | 171.5750 | 000.0 | 172.3750 | 146.2 |
| 6 | CLW -S Hemlock | 173.7625 | 000.0 | 166.5625 | 123.0 |
| 7 | CWF-N Osier | 170.5000 | 000.0 | 172.2250 | 123.0 |
| 8 | NEZ- E Fog Mtn | 168.6750 | 000.0 | 169.9500 | 146.2 |
| 9 | AIR GUARD** | 168.6250 | 000.0 | 168.6250 | 186.2 |
| 10 | EMS 2** | 155.2800W | 000.0 | 155.2800W | 000.0 |
| 11 | CLW -S Coolwater | 173.7625 | 000.0 | 166.5625 | 131.8 |
| 12 | CLW -S Castle Butte | 173.7625 | 000.0 | 166.5625 | 136.5 |
| 13 | ID-CO-SHF-Castle Butte | 154.1150W | 000.0 | 156.0150W | 88.5 |
| 14 | CLW/NEZ A/G | 164.8625 | 000.0 | 164.8625 | 000.0 |
| 15 | COM USE 1 | 163.7125 | 000.0 | 163.7125 | 000.0 |
| 16 | COMUSE 2 | 168.6125 | 000.0 | 168.6125 | 000.0 |

**to use this FZ one must use Tone 110.9

ID CO SHF Rocky Point tone 186.2

Group 7 North Fork

| Ch | Label: | Rec. Freq.: | Rec.CG: | Tx. Freq.: | Tone |
|----|--------------------|-------------|---------|------------|-------|
| 1 | CLW -N DIRECT | 170.5000 | 000.0 | 170.5000 | 146.2 |
| 2 | CLW -N Jct. Mtn. | 170.5000 | 000.0 | 172.2250 | 167.9 |
| 3 | CLW -N Eagle Pt. | 170.5000 | 000.0 | 172.2250 | 103.5 |
| 4 | CLW -N Elk Butte | 170.5000 | 000.0 | 172.2250 | 110.9 |
| 5 | CLW -N Osier Ridge | 170.5000 | 000.0 | 172.2250 | 123.0 |
| 6 | CLW -N Hemlock Bt | 170.5000 | 000.0 | 172.2250 | 131.8 |
| 7 | CLW - S Hemlock | 173.7625 | 000.0 | 166.5625 | 123.0 |
| 8 | CLW -E Bear Mtn. | 171.5750 | 000.0 | 172.3750 | 136.5 |
| 9 | AIR GUARD | 168.6250 | 000.0 | 168.6250 | 110.9 |
| 10 | EMS 2** | 155.2800W | 000.0 | 155.2800W | 000.0 |
| 11 | CPTPA -Elk Butte | 159.2700W | 000.0 | 151.2050W | 127.3 |
| 12 | CPTPA DIRECT | 159.2700W | 000.0 | 159.2700W | 000.0 |
| 13 | CLW SHF -Bald Mtn | 155.9550W | 000.0 | 158.9250W | 146.2 |
| 14 | CLW/NEZ A/G | 164.8625 | 000.0 | 164.8625 | 000.0 |
| 15 | COM USE 1 | 163.7125 | 000.0 | 163.7125 | 000.0 |
| 16 | COM USE 2 | 168.6125 | 000.0 | 168.6125 | 000.0 |

Group 8 Lochsa

| Ch | Label: | Rec. Freq.: | Rec.CG: | Tx. Freq.: | Tone |
|----|----------------------|-------------|---------|------------|-------|
| 1 | CLW -S DIRECT | 173.7625 | 000.0 | 173.7625 | 110.9 |
| 2 | CLW -S Hemlock | 173.7625 | 000.0 | 166.5625 | 123.0 |
| 3 | CLW- S Coolwater | 173.7625 | 000.0 | 166.5625 | 131.8 |
| 4 | CLW -S Castle Butte | 173.7625 | 000.0 | 166.5625 | 136.5 |
| 5 | CLW -S Doty Ridge | 173.7625 | 000.0 | 166.5625 | 146.2 |
| 6 | CLW- N Hemlock Bt | 170.5000 | 000.0 | 172.2250 | 131.8 |
| 7 | CLW- E DIRECT | 171.5750 | 000.0 | 171.5750 | 110.9 |
| 8 | CLW- E Bear Mtn. | 171.5750 | 000.0 | 172.3750 | 136.5 |
| 9 | AIR GUARD | 168.6250 | 000.0 | 168.6250 | 110.9 |
| 10 | EMS 2** | 155.2800W | 000.0 | 155.2800W | 000.0 |
| 11 | CPTPA- Elk Butte | 159.2700W | 000.0 | 151.2050W | 97.4 |
| 12 | ID- CO- SHF- Car/Car | 154.7250W | 000.0 | 154.7250W | 000.0 |
| 13 | CLW SHF Car/Car | 155.7750W | 000.0 | 155.7750W | 146.2 |
| 14 | CLW/NEZ A/G | 164.8625 | 000.0 | 164.8625 | 000.0 |
| 15 | COM USE 1 | 163.7125 | 000.0 | 163.7125 | 000.0 |
| 16 | COM USE 2 | 168.6125 | 000.0 | 168.6125 | 000.0 |

Group 6 Palouse

| Ch | Label: | Rec. Freq.: | Rec.CG: | Tx. Freq.: | Tone |
|----|-------------------|-------------|---------|------------|-------|
| 1 | CLW- N DIRECT | 170.5000 | 000.0 | 170.5000 | 146.2 |
| 2 | CLW- N Gold Hill | 170.5000 | 000.0 | 172.2250 | 156.7 |
| 3 | CLW N Elk Butte | 170.5000 | 000.0 | 172.2250 | 110.9 |
| 4 | IDL -Air - Ground | 151.1450 | 000.0 | 151.1450 | 100.0 |
| 5 | IDL -Teaken | 159.3000 | 123.0 | 151.3250 | 100.0 |
| 6 | CPTPA -Elk Butte | 159.2700W | 000.0 | 151.2050W | 97.4 |
| 7 | CPTPA- DIRECT | 159.2700W | 000.0 | 159.2700W | 000.0 |
| 8 | IPF -S-2 Direct | 168.7250 | 000.0 | 168.7250 | 000.0 |
| 9 | IPF- S-2 RPT | 168.7250 | 000.0 | 168.1250 | 156.7 |
| 10 | AIR GUARD | 168.6250 | 000.0 | 168.6250 | 110.9 |
| 11 | CLW -S DIRECT | 173.7625 | 000.0 | 173.7625 | 110.9 |
| 12 | LWS NOAA | 162.5500 | 000.0 | 000.0 | 000.0 |
| 13 | POTLATCH | 153.2900W | 000.0 | 153.2900W | 000.0 |
| 14 | CLW/NEZ A/G | 164.8625 | 000.0 | 164.8625 | 000.0 |
| 15 | COM USE 1 | 163.7125 | 000.0 | 163.7125 | 000.0 |
| 16 | COM USE 2 | 168.6125 | 000.0 | 168.6125 | 000.0 |

Group 12 --West IA Zone

| Ch | Label: | Rec. Freq.: | Rec.CG: | Tx. Freq.: | Tone |
|----|----------------------|-------------|---------|------------|-------|
| 1 | IDL-Cottonwood | 159.4650 | 136.5 | 151.2650 | 127.3 |
| 2 | IDL - Jim Creek | 159.2325 | 131.8 | 151.3325 | 123.0 |
| 3 | IDL -Teaken | 159.3000 | 123.0 | 151.3250 | 100.0 |
| 4 | IDL -Woodrat | 159.4500 | 136.5 | 151.3100 | 100.0 |
| 5 | NPF- W High Camp | 164.1375 | 000.0 | 169.1250 | 123.0 |
| 6 | NPF -W Slate Point | 164.1375 | 000.0 | 169.1250 | 110.9 |
| 7 | NPF -W Cold Springs | 164.1375 | 000.0 | 169.1250 | 146.2 |
| 8 | NPF -W Heaven's Gate | 164.1375 | 000.0 | 169.1250 | 136.5 |
| 9 | NPF -W Black Butte | 164.1375 | 000.0 | 169.1250 | 131.8 |
| 10 | PAF -Hershey Point | 171.5500 | 000.0 | 172.3500 | 156.7 |
| 11 | IDL DIR2 * | 159.2850W | 77.0 | 159.2850W | 77.0 |
| 12 | COM USE 1 | 163.7125 | 000.0 | 163.7125 | 000.0 |
| 13 | COM USE 2 | 168.6125 | 000.0 | 168.6125 | 000.0 |
| 14 | IDL A/G * | 151.1450 | 000.0 | 151.1450 | 100.0 |
| 15 | CLW-NEZ A/G | 164.8625 | 000.0 | 164.8625 | 000.0 |
| 16 | WALL-WHIT | 166.0000 | 000.0 | 164.0250 | 167.9 |

For use as IA Frequencies

IDL REPEATER FREQUENCIES

| | Rx | Rx-CG | Tx | Tx-tone |
|------------------|----------|-------|----------|---------|
| Cottonwood Butte | 159.4650 | 136.5 | 151.2650 | 127.3 |
| Jim Creek | 159.2325 | 131.8 | 151.3325 | 123.0 |
| Teaken Butte | 159.3000 | 123.0 | 151.3250 | 100.0 |
| Woodrat | 159.4500 | 136.5 | 151.3100 | 100.0 |
| Elk Butte | 159.2550 | 100.0 | 151.1750 | 123.0 |

Payette Repeaters and Frequencies

| | Simplex | | Duplex | |
|----------------------|-----------|---------|---------|---------|
| | Rx | Tx | Rx | Tx |
| Payette East | 169.900 | 169.900 | 169.900 | 170.550 |
| Payette West | 171.550 | 171.550 | 171.550 | 172.350 |
| SITPA | 159.450 | 159.450 | 159.450 | 151.310 |
| PAF Flight Following | 121.725 | | | |
| PAF Air-to-Air | Primary | | 118.875 | |
| PAF Air-to-Air | Secondary | | 120.050 | |
| PAF Air-to-Ground | 167.4250 | | | |
| PAF Tactical 1 | 166.9875 | | | |
| PAF Tactical 2 | 172.400 | | | |
| SITPA Tactical | 159.225 | | | |

| Tones | | | | |
|-------|-------|--------------|------------|--------------|
| Tone | Freq | PAF West | PAF East | SITPA |
| 1 | 110.9 | W. Simplex | E. Simplex | Snowbank |
| 2 | 123.0 | Sturgil | Nick Pk | |
| 3 | 131.8 | Smith Mtn | Elk | |
| 4 | 136.5 | Indian Mtn | War Eagle | |
| 5 | 146.2 | Cold Springs | | Brundage Mtn |
| 6 | 156.7 | Hershey Pt | Sheepeater | |
| 7 | 167.9 | Cow | Meadow Ck | |
| 8 | 103.5 | Steck Park | Miners Pk | |
| 9 | 85.4 | | | |

**Idaho Department of Lands
Craig Mountain Supervisory Area
2011 Frequency Plan**

| IDL Radio Frequencies | | | | | | | |
|-----------------------|----|----------|---------|----------|---------|------|----------------------------|
| CRAIG MTN GROUP | | # 2 | | | | | |
| Display | CH | RX Freq. | RX Tone | TX Freq. | TX Tone | Band | Description |
| AIR GND1 | 1 | 151.1450 | 0.0 | 151.1450 | 100.0 | N | IDL Statewide A/G |
| IDL DIR1A | 2 | 159.2550 | 114.8 | 159.2550 | 114.8 | N | IDL Statewide TAC |
| C/N A/G | 3 | 167.9875 | 0.0 | 167.9875 | 0.0 | N | Clear/Nez A/G |
| IDL DIR2 | 4 | 159.2850 | 77.0 | 159.2850 | 77.0 | W | IDL Statewide TAC/RFD WB |
| COTTON | 5 | 159.4650 | 136.5 | 151.2650 | 127.3 | N | IDL Rpt Cottonwood Butte |
| TEAKEAN | 6 | 159.3000 | 123.0 | 151.3250 | 100.0 | N | IDL PD Rpt Teaken Butte |
| WOODRAT | 7 | 159.4500 | 136.5 | 151.3100 | 100.0 | N | IDL MC Repeater Woodrat |
| NPT FRPT | 8 | 154.2725 | 0.0 | 151.4675 | D754 | N | Nez Perce Tribe Rpt |
| NPT FC2C | 9 | 154.2725 | 0.0 | 154.2725 | 0.0 | N | Nez perce Tribe TAC |
| IDL PROJ | 10 | 159.2850 | 100.0 | 151.4450 | 100.0 | W | IDL Project Fire Rpt |
| IDL DIR3 | 11 | 159.3000 | 77.0 | 159.3000 | 77.0 | N | IDL Statewide TAC |
| JIM CR | 12 | 159.2325 | 131.8 | 151.3325 | 123.0 | N | IDL CM Rpt Jim Creek Butte |
| NPF HCMP | 13 | 164.1375 | 0.0 | 169.1250 | 123.0 | N | NPF Rpt High Camp |
| WWF SMRS | 14 | 166.0000 | 167.9 | 164.0250 | 167.9 | N | WWF Rpt on Somers Pt. |
| NOAA 55 | 15 | 162.5500 | 0.0 | 0.0 | 0.0 | W | NOAA Weather |
| IDL DIR5 | 16 | 159.4500 | 77.0 | 159.4500 | 77.0 | N | IDL Statewide TAC |

**SNAKE RIVER CORRIDOR GROUP
FREQUENCIES**

| Ch | Label: | RX Frequency | TX Frequency | Mode | Tone |
|-----------|---------------------|---------------------|---------------------|-------------|-------------|
| 1 | IDL - Cottonwood | 159.4650 | 151.2650 | NB | 127.3 |
| 2 | IDL - Jim Creek | 159.2325 | 151.3325 | NB | 123.0 |
| 3 | NPF - Cold Springs | 164.1375 | 169.1250 | NB | 146.2 |
| 4 | NPF - Heavens Gate | 164.1375 | 169.1250 | NB | 136.5 |
| 5 | IDL - TAC | 159.2850 | 159.2850 | WB | 77.0 |
| 6 | IDL - Air to Ground | 151.1450 | 151.1450 | NB | |
| 7 | PAF - Cold Springs | 171.5500 | 172.3500 | NB | 146.2 |
| 8 | PAF - Sturgil | 171.5500 | 172.3500 | NB | 123.0 |
| 9 | PAF - TAC | 166.9875 | 166.9875 | NB | |
| 10 | PAF - Air to Ground | 167.4250 | 167.4250 | NB | 100.0 |
| 11 | WWF - Somers Point | 166.0000 | 164.0250 | NB | 167.9 |
| 12 | WWF - Lookout | 166.0000 | 164.0250 | NB | 156.7 |
| 13 | WWF - ZAP Project | 164.9625 | 164.9625 | NB | |
| 14 | AG Oscar | 169.1500 | 169.150 | NB | |
| 15 | Idaho County | 154.1150 | 156.0150 | WB | 127.3 |
| 16 | Air Guard | 168.6250 | 168.6250 | NB | 110.9 |

PROTOCOL:

The dispatch center coordinating response to an incident will assign the appropriate frequencies.

APPENDIX C

Wallowa-Whitman National Forest, Nez Perce National Forest, Payette National Forest,
Coeur D'Alene District Bureau of Land Management, & Idaho Department of Lands



SUBJECT: ***Lead Agency Administrator Roles and Responsibilities for Incident Management***

ISSUE: There is a need to provide an outline of Agency Administrator responsibilities so that all Administrators within the Hell's Canyon Area are aware of lead Agency Administrator roles.

DISCUSSION: During the 2007 fire season the Poe Cabin fire affected lands administered by four different agencies with a single lead Agency Administrator designated. There were several instances when incident management teams (IMT's), buying teams, incident business advisors or resource advisors were confused about who they needed to communicate with concerning decision making and information sharing.

LEAD AGENCY ADMINISTRATOR DETERMINATION: At the onset of an extended attack incident or large fire the involved or potentially involved jurisdictional and protection agency administrators or their representatives will jointly determine who will serve as the lead agency administrator. This determination can be based on where the fire started, where it is projected to spread, potential impacts of the fire and agency administrator availability and qualifications. During the life of the incident the agency administrator should periodically review this decision and determine if a change is needed. Changes in the fires activity, who it is threatening and fire impacts would be typical factors used for periodic re-evaluation.

ROLES AND RESPONSIBILITIES: The Lead Agency Administrator will have the primary responsibility to:

- Coordinate daily or as agreed to with all other jurisdictional Agency Administrators concerning fire event.
- Provide one voice to IMT's while coordinating with all other jurisdictional Agency Administrators.
- Coordinate team in-briefing and closeouts, WFSA/WFDSS development, revision and daily validation, delegation of authority letters.
- Coordinate with congressional staff and county commissioners and stay in

close contact with key community leaders by attending weekly Commissioners meeting to provide updates and knowing who and where local stake holders are such as outfitter and guides.

- Designate and coordinate with the Incident Business Advisor assuring each agency's financial responsibilities related to fire suppression and rehabilitation are met.
- Provide information to MAC groups.
- Consider realities of today's suppression costs by assessing values to be protected versus anticipated suppression costs. Collaborate on suppression cost management and values at risk with other jurisdictional administrators.
- Assure that fiscal matters are resolved to the satisfaction of all Agency Administrators prior to the release of IMT. Makes sure that cost apportionment agreements are signed by appropriate official and reflect equitable balance of fire costs.
- Coordinate with assigned Resource Advisor(s).
- Assures that rehabilitation standards are outlined in plans, rehabilitation efforts are coordinated with all Agency Administrators (along with IBA), and obtains appropriate signatures for the plans.
- Assure that all cooperating agency administrators are kept informed on an agreed to basis.
- Assure that Regional Fire Management Staff is kept informed on incident status.

If the lead Agency Administrator is changed, all parties need to clearly understand when it will occur, and communicate the change to IMT's.

APPENDIX D

Process for Management of Wildland Fires in Hells Canyon N.R.A

Between the

NEZ PERCE NATIONAL FOREST,

PAYETTE NATIONAL FOREST,

And the

WALLOWA-WHITMAN NATIONAL FOREST

I. OBJECTIVE

The objective of this document is to provide for the most efficient and effective management of wildland fires requiring significant logistical support on the Idaho portion of the Hells Canyon National Recreation Area, hereinafter referred to as HCNRA. This document is an Appendix to the SNAKE-SALMON FIRE MANAGEMENT MASTER AGREEMENT.

II. INTRODUCTION

In 1979, the administrative responsibility for all of HCNRA was transferred to the Wallowa-Whitman National Forest. Since that time, it has become evident that wildland fires on the Idaho portion of the HCNRA, escaping initial action and reaching project size cannot be efficiently and effectively managed without significant logistical support on the part of the Nez Perce and/or Payette National Forests. This is due primarily to the physical barrier of Hells Canyon itself as well as the local and regional logistical support capability by the Nez Perce and/or Payette Forests. This support includes such items as on the ground access, preplanned/pre-arranged sources of supplies, equipment, local suppression forces, and other facilitating services.

The Fire Staff Officers for the three forests and the HCNRA Manager reached agreement in concept in March of 1985 and agreed to develop a formal document describing how to achieve the stated objective (above). With the formation of Grangeville Interagency Dispatch Zone in 2006, this agreement was expanded to include the Clearwater National Forest.

III. ACTIONS

A. GENERAL

At such time and when in the judgement of the Wallowa-Whitman National Forest, wildland fires on the Idaho portion of HCNRA could be most efficiently and effectively managed by the Payette or Nez Perce National Forests, the Wallowa-Whitman Forest Supervisor (normally acting through the HCNRA Manager) will negotiate the delegation of management of the fire or logistical support to either the Payette or Nez Perce Forest Supervisor (normally acting through their respective Fire Staff Officer). An indicator of the need for transfer of management of specific incidents might be estimated logistical support required by that incident from the Idaho Forests.

The roles, responsibilities, services, activities, and/or necessary documents shall normally be handled or provided as described below. Utilize the attached checklist on page 34 of this document.

B. WALLOWA-WHITMAN NATIONAL FOREST

The following is a list of items that may be fully or partially needed to facilitate the transfer of delgated authority for management of fires from one unit to another.

1. A written delegation of authority from the Wallowa-Whitman National Forest Supervisor to the IC for assumption of command and overall management of the fire (via electronic mail) at an agreed upon date and time.
2. An approved WFDSS (Wildland Fire Decision Support System) initiated by the Wallowa-Whitman National Forest, will be developed jointly between the Wallowa-Whitman National Forest and the forest that will be assuming the management of the fire .
3. The HCNRA District Ranger shall normally be designated as the Wallowa-Whitman Forest Supervisor's official representative and be available to administer and assist as needed (i.e., briefings, WFDSS daily validation or revisions, initiation logistical needs and coordination with neighboring dispatch centers etc.).
4. Services of a full-time Resource Advisor on site (separate and distinct from the official Forest Service representative).
5. Maps, pre-attack information, and other equipment or services which may be reasonably provided.
6. Plan and implement emergency soil and water rehabilitation measures. Emergency fireline rehabilitation activities shall be coordinated and negotiated with the Incident Commander.

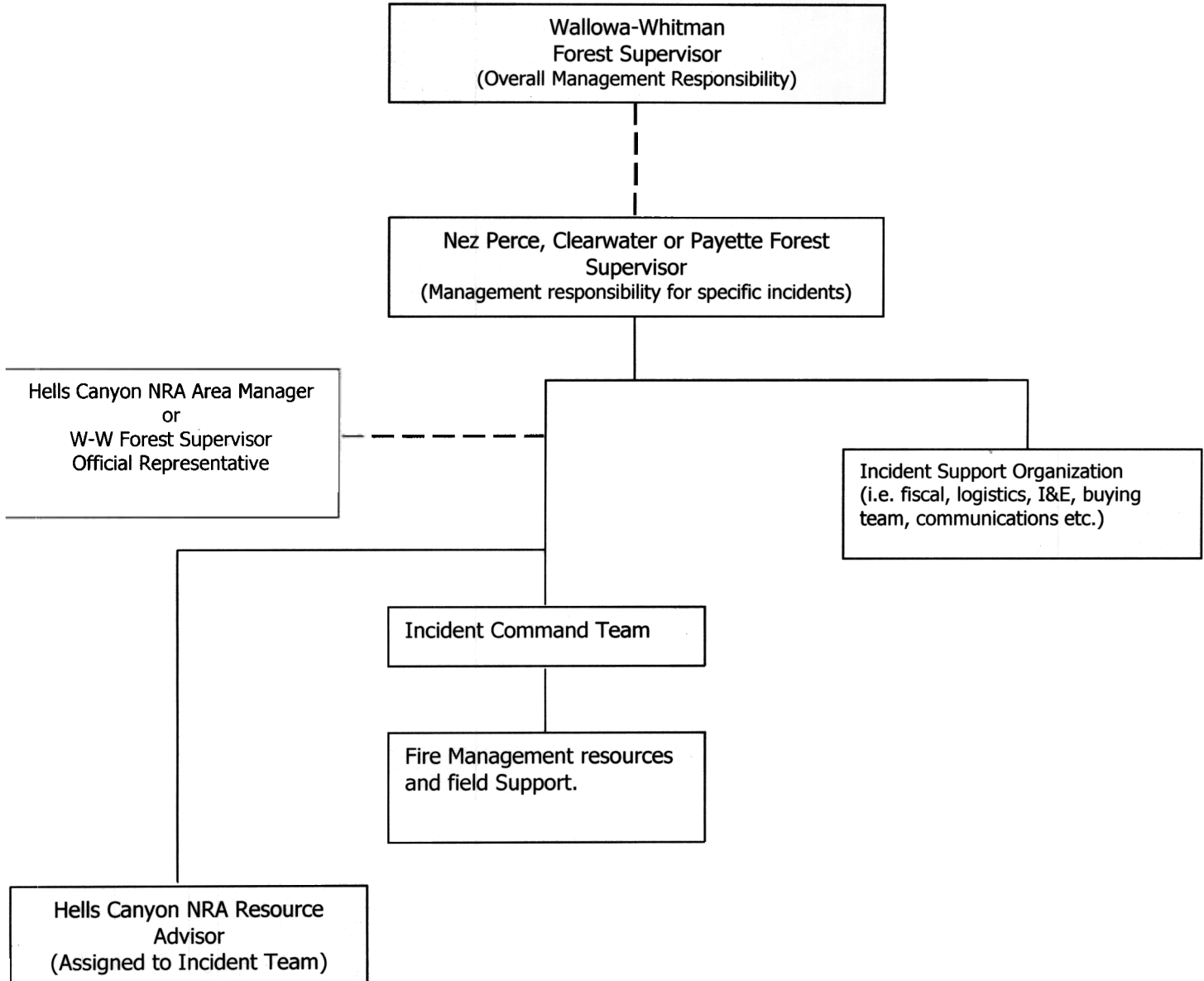
7. Law enforcement investigation and follow-up actions for human-caused fires. Law enforcement and security as related to the incident operations will be the responsibility of the Incident Management Team.
8. Complete and submit the final fire report, Form 5100-29.

C. NEZ PERCE OR PAYETTE NATIONAL FOREST

The following is a list of items that may be fully or partially needed to facilitate the transfer of delgated authority for management of fires from one unit to another.

1. Order appropriate Incident Management Team to manage the situation and facilitate the transfer related dispatch functions.
2. Brief Incident Commander and Incident Management Team and provide all usual support services (i.e., logistics, fiscal, public information, etc.). Include a copy of this document in the briefing package to the Incident Commander.
3. Return of incident management to the Wallowa-Whitman National Forest shall be based upon a mutually agreed upon transition plan.
4. ICS-209, Incident Status Summary, and Incident Action Plan shall be prepared and submitted through normal Northern Rockies/Eastern Great Basin communication procedures. An informational copy shall be provided to the Wallowa- Whitman Forest coordinator.
5. Transfer the final fire package to the Wallowa-Whitman National Forest.

Organizational Diagram



| CHECKLIST OF KEY ACTIONS | | |
|--------------------------------------------------------------------------------------------------------------------------------------------------------------------------------------------------------------------------------------------|------------------------------------------------|------------------------|
| For fires managed by the Payette or Nez Perce National Forests in the HCNRA | | |
| Action | Responsibility | Completed by |
| 1. An approved WFSA or WFDSS | W-W Forest Supervisor jointly with lead agency | (Date, time, initials) |
| 2. Designate a lead Agency Administrator | W-W Forest Supervisor | |
| 3. Assign/delegate Hells Canyon NRA District Ranger as Forest Supervisor's official representative | W-W Forest Supervisor | |
| 4. Prepare and provide pre-attack information, GIS maps, etc. | HCNRA Area Manager | |
| 5. Plan and implement rehabilitation measures | W-W Forest Supervisor | |
| 6. Initiate fire-cause investigation | HCNRA Area Manager | |
| 7. Order Incident Management Team | Nez Perce or Payette Forest Supervisor | |
| 8. Facilitate the transfer of related dispatch functions | BMIDC Center Manager | |
| 9. Written delegation of authority to the Incident Commander for the overall management of the fire | W-W Forest Supervisor jointly with lead agency | |
| 10. Assign full-time Resource Advisor to IMT | W-W Forest Supervisor | |
| 11. Assign Safety Liasion | W-W Forest Supervisor | |
| 12. Brief IC and Team, provide incident support services including fiscal, logistics, I&E, and overall management of incident | Nez Perce or Payette Forest Supervisor | |
| 13. Return incident management to Wallowa-Whitman National Forest | Nez Perce or Payette Forest Supervisor | |
| 14. Transfer final fire package to Wallowa-Whitman National Forest | Nez Perce or Payette Forest Supervisor | |
| 15. Prepare and submit ICS-209, Incident Status Summary and Incident Action Plan through annual Northern Rockies/Eastern Great Basin procedures. Send informational copy to Wallowa-Whitman Forest Coordinator and Dispatch Center Manager | IC via Nez Perce or Payette Forest Supervisor | |
| 16. Complete/submit final fire report, Form 5100-29 | W-W Forest Supervisor | |