

P3 Plan Av2 Thur 10 Jul



Goals:

1. DC8 intercomp at 2 levels in B200 HSRL curtain
2. Churchill AERONET spiral
3. Hudson Bay ice BRDF & albedo

P3 Plan Av2 Thur 10 Jul



WP #	Lat (+90)	Lon (+180)	Speed (m/s)	De-lay T (min)	Alti-tude (m)	Cum Leg T (h:m)	UTC (h:m)	Local T (h:m)	Leg T (h:m)	Dist (km)	Cum Dist (km)	Dist (nm)	Cum Dist (nm)	Speed (kt)	Alti-tude (kft)	Comments
------	-----------	------------	-------------	----------------	---------------	-----------------	-----------	---------------	-------------	-----------	---------------	-----------	---------------	------------	-----------------	----------

1	+54_24.0	-110_16.8	145	0	0	0:00	16:14	10:14	0	0	0	0	0	282	0	Cold Lake
2	+59_15.3	-105_50.2	145	0	3000	1:10	17:24	11:24	1:10	603	603	325.6	325.64	282	9.84	Meet with DC8 Stony Rapids
3	+57_43.4	-107_26.3	145	0	1000	1:32	17:46	11:46	0:23	194	797	104.7	430.35	282	3.28	KEDEK
4	+56_28.7	-109_24.0	145	0	1000	1:53	18:07	12:07	0:21	182	979	98.35	528.7	282	3.28	6Z/N
5	+58_45.0	-93_50.4	145	0	4000	3:43	19:57	13:57	1:51	958	1937	517	1045.7	282	13.1	Churchill AERONET
6	+58_45.0	-93_50.4	140	20	60	4:03	20:17	14:17	0:20	0	1937	0	1045.7	272	0.2	Churchill AERONET
7	58.460	-90.381	140	0	150	4:27	20:41	14:41	0:25	203	2139	109.5	1155.2	272	0.49	Hudson Bay CAL track (OP 1852)
8	57.300	-89.700	140	0	150	4:43	20:57	14:57	0:17	135	2275	72.91	1228.1	272	0.49	Hudson Bay CAL track
9	57.300	-89.700	150	50	150	5:33	21:47	15:47	0:50	0	2275	0	1228.1	292	0.49	Hudson Bay CAL track
10	54.400	-110.280	150	0	0	0.333	0:14	18:14	2:27	1318	3593	711.7	1939.8	292	0	Cold Lake

P3 Plan Av2 Thur 10 Jul

WP #	Lat (+-90)	Lon (+-180)	Speed (m/s)	De-lay T (min)	Alti- tude (m)	Cum Leg T (h:m)	UTC (h:m)	Local T (h:m)	Leg T (h:m)	Dist (km)	Cum Dist (km)	Dist (nm)	Cum Dist (nm)	Speed (kt)	Alti- tude (kft)	Comments
1	+54_24.0	-110_16.8	145	0	0	0:00	16:14	10:14	0	0	0	0	0	282	0	Cold Lake
2	+59_15.3	-105_50.2	145	0	3000	1:10	17:24	11:24	1:10	603	603	325.6	325.64	282	9.84	Meet with DC8 Stony Rapids
3	+57_43.4	-107_26.3	145	0	1000	1:32	17:46	11:46	0:23	194	797	104.7	430.35	282	3.28	KEDEK
4	+56_28.7	-109_24.0	145	0	1000	1:53	18:07	12:07	0:21	182	979	98.35	528.7	282	3.28	6Z/N
5	+58_45.0	-93_50.4	145	0	4000	3:43	19:57	13:57	1:51	958	1937	517	1045.7	282	13.1	Churchill AERONET
6	+58_45.0	-93_50.4	140	20	60	4:03	20:17	14:17	0:20	0	1937	0	1045.7	272	0.2	Churchill AERONET
7	58.460	-90.381	140	0	150	4:27	20:41	14:41	0:25	203	2139	109.5	1155.2	272	0.49	Hudson Bay CAL track (OP 1852)
8	57.300	-89.700	140	0	150	4:43	20:57	14:57	0:17	135	2275	72.91	1228.1	272	0.49	Hudson Bay CAL track
9	57.300	-89.700	150	50	150	5:33	21:47	15:47	0:50	0	2275	0	1228.1	292	0.49	Hudson Bay CAL track
10	54.400	-110.280	150	0	0	0.333	0:14	18:14	2:27	1318	3593	711.7	1939.8	292	0	Cold Lake

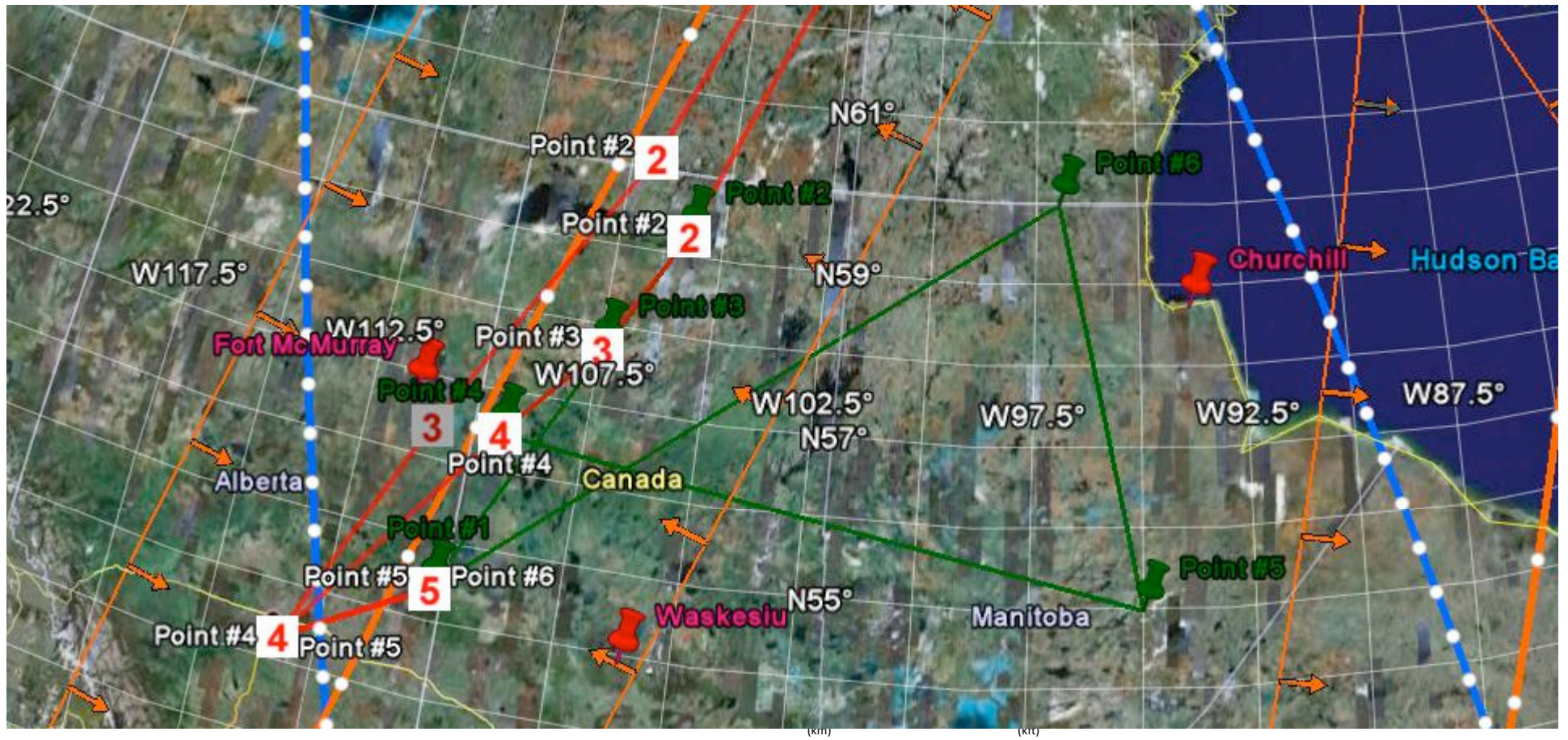
P3 Plan Bv2 Thur 10 Jul



Goals:

1. DC8 intercomp at 2 levels in B200 HSRL curtain
2. MISR validation
3. Radiation/in situ work in clear areas to East

P3 Plan Bv2 Thur 10 Jul

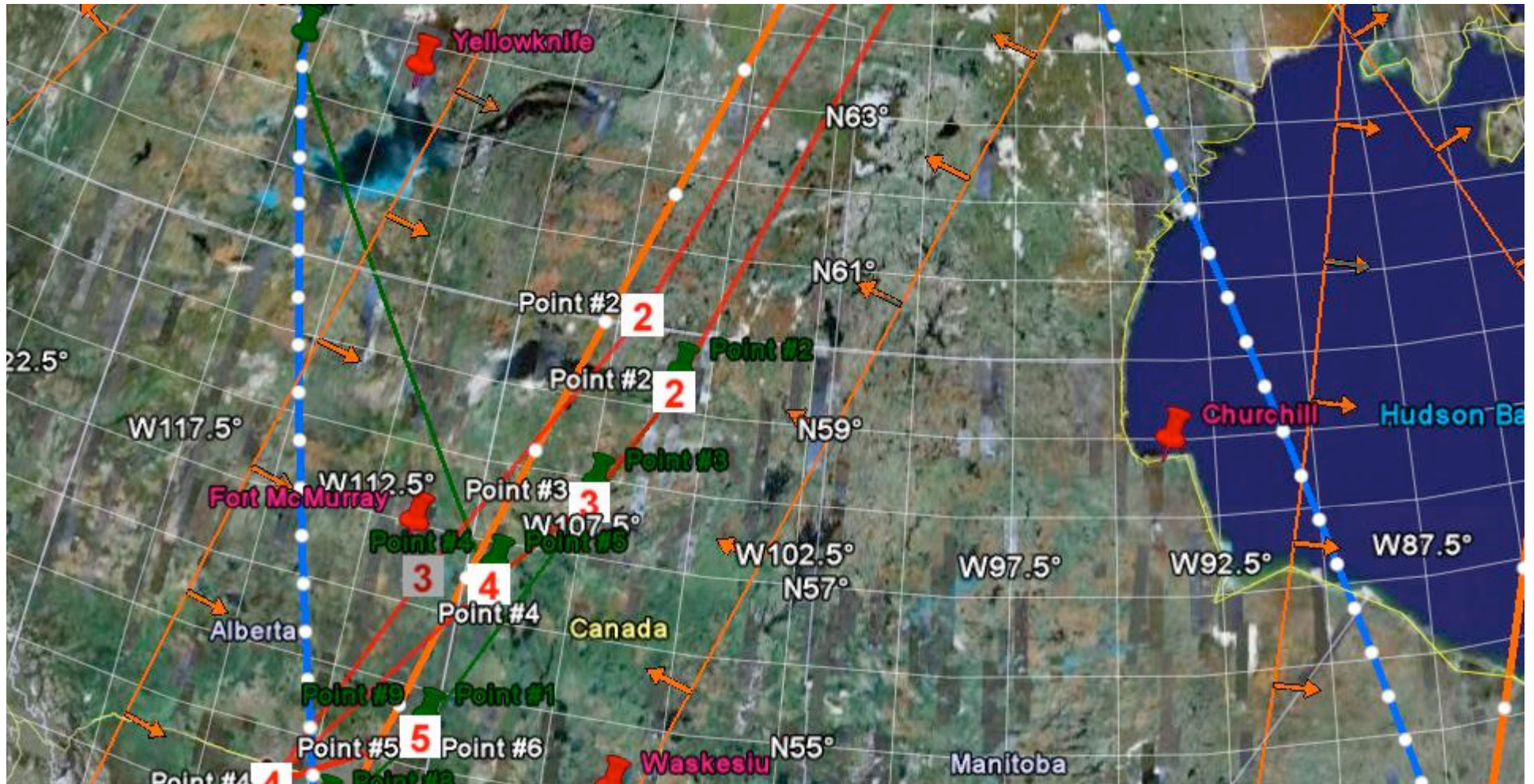


1+54_24.0 -110_16.8	145	0	0	0:00	16:14	10:14	0	0	0	0	0	0	282	0	Cold Lake
2+59_15.3 -105_50.2	145	0	3000	1:10	17:24	11:24	1:10	603	603	325.6	325.63	282	9.84	Meet with DC8 Stony Rapids	
3+57_43.4 -107_26.3	145	0	1000	1:32	17:46	11:46	0:23	194	797	104.7	430.36	282	3.28	KEDEK	
4+56_28.7 -109_24.0	145	0	1000	1:53	18:07	12:07	0:21	182	979	98.33	528.69	282	3.28	6Z/N	
5+55_0.0 -95_0.0	145	0	4000	3:38	19:52	13:52	1:46	914	1893	493.5	1022.2	282	13.1		
6+59_59.4 -96_57.0	140	20	60	5:03	21:17	15:17	1:26	567	2460	305.9	1328.1	272	0.2		
7+54_24.0 -110_16.8	150	0	0	7:04	23:18	17:18	2:01	1012	3471	546.3	1874.4	292	0	Cold Lake	

P3 Plan Bv2 Thur 10 Jul

WP #	Lat (+-90)	Lon (+-180)	Speed (m/s)	De-lay T (min)	Alti- tude (m)	Cum Leg T (h:m)	UTC (h:m)	Local T (h:m)	Leg T (h:m)	Dist (km)	Cum Dist (km)	Dist (nm)	Cum Dist (nm)	Speed (kt)	Alti- tude (kft)	Comments
1+54	24.0	-110_16.8	145	0	0	0:00	16:14	10:14	0	0	0	0	0	282	0	Cold Lake
2+59	15.3	-105_50.2	145	0	3000	1:10	17:24	11:24	1:10	603	603	325.6	325.63	282	9.84	Meet with DC8 Stony Rapids
3+57	43.4	-107_26.3	145	0	1000	1:32	17:46	11:46	0:23	194	797	104.7	430.36	282	3.28	KEDEK
4+56	28.7	-109_24.0	145	0	1000	1:53	18:07	12:07	0:21	182	979	98.33	528.69	282	3.28	6Z/N
5+55	0.0	-95_0.0	145	0	4000	3:38	19:52	13:52	1:46	914	1893	493.5	1022.2	282	13.1	
6+59	59.4	-96_57.0	140	20	60	5:03	21:17	15:17	1:26	567	2460	305.9	1328.1	272	0.2	
7+54	24.0	-110_16.8	150	0	0	7:04	23:18	17:18	2:01	1012	3471	546.3	1874.4	292	0	Cold Lake

P3 Plan Cv2 Thur 10 Jul



Goals:

1. DC8 intercomp at 2 levels in B200 HSRL curtain
2. MISR validation
3. CALIPSO val w Radiation/in situ work in clear areas

P3 Plan Cv2 Thur 10 Jul



WP #	Lat (+90)	Lon (+-180)	Speed (m/s)	De-lay T (min)	Alti-tude (m)	Cum Leg T (h:m)	UTC (h:m)	Local T (h:m)	Leg T (h:m)	Dist (km)	Cum Dist (km)	Dist (nm)	Cum Dist (nm)	Speed (kt)	Alti-tude (kft)	Comments
1	+54_24	-110_16.8	145	0	0	0:00	16:14	10:14	0	0	0	0	0	282	0	Cold Lake
2	+59_15	-105_50.2	145	0	3000	1:10	17:24	11:24	1:10	603	603	325.6	325.63	282	9.84	Meet with DC8 Stony Rapids
3	+57_43	-107_26.3	145	0	1000	1:32	17:46	11:46	0:23	194	797	104.7	430.36	282	3.28	KEDEK
4	+56_28	-109_24.0	145	0	1000	1:53	18:07	12:07	0:21	182	979	98.33	528.69	282	3.28	6Z/N
5	+56_28	-109_24.0	145	45	4000	2:38	18:52	12:52	0:46	0.22	979	0.12	528.81	282	13.1	
6	+62_30	-118_0.0	140	0	60	4:13	20:27	14:27	1:35	825	1804	445.4	974.23	272	0.2	
7	+62_30	-118_0.0	140	15	60	4:28	20:42	14:42	0:15	0	1804	0	974.23	272	0.2	CALIPSO track
8	+52_59	-112_7.2	150	0	0	6:40	22:54	16:54	2:13	1112	2916	600.3	1574.5	292	0	
9	+54_24	-110_16.8	150	0	0	7:02	23:16	17:16	0:22	198	3114	106.9	1681.4	292	0	Cold Lake

P3 Plan Cv2 Thur 10 Jul

WP #	Lat (+-90)	Lon (+-180)	Speed (m/s)	De-lay T (min)	Alti- tude (m)	Cum T (h:m)	Leg UTC (h:m)	Local T (h:m)	Leg T (h:m)	Dist (km)	Cum Dist (km)	Dist (nm)	Cum Dist (nm)	Speed (kt)	Alti- tude (kft)	Comments
1	+54_24.0	-110_16.8	145	0	0	0:00	16:14	10:14	0	0	0	0	0	282	0	Cold Lake
2	+59_15.3	-105_50.2	145	0	3000	1:10	17:24	11:24	1:10	603	603	325.6	325.63	282	9.84	Meet with DC8 Stony Rapids
3	+57_43.4	-107_26.3	145	0	1000	1:32	17:46	11:46	0:23	194	797	104.7	430.36	282	3.28	KEDEK
4	+56_28.7	-109_24.0	145	0	1000	1:53	18:07	12:07	0:21	182	979	98.33	528.69	282	3.28	6Z/N
5	+56_28.8	-109_24.0	145	45	4000	2:38	18:52	12:52	0:46	0.22	979	0.12	528.81	282	13.1	
6	+62_30.0	-118_0.0	140	0	60	4:13	20:27	14:27	1:35	825	1804	445.4	974.23	272	0.2	
7	+62_30.0	-118_0.0	140	15	60	4:28	20:42	14:42	0:15	0	1804	0	974.23	272	0.2	CALIPSO track
8	+52_59.4	-112_7.2	150	0	0	6:40	22:54	16:54	2:13	1112	2916	600.3	1574.5	292	0	
9	+54_24.0	-110_16.8	150	0	0	7:02	23:16	17:16	0:22	198	3114	106.9	1681.4	292	0	Cold Lake