

Figure 25a Line Clamps Flush to Elevating Device

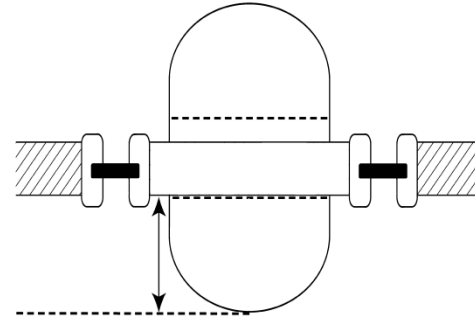


Figure 25b Elevating Device Supported by Material Different from Line Material

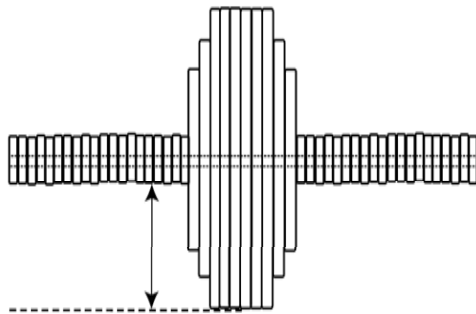


Figure 25c Cookie Gear

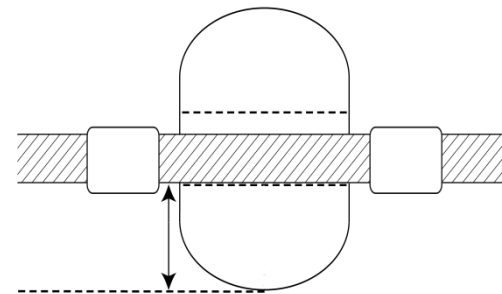


Figure 25d Line Clamps Not Flush to Elevating Device

Measuring points are shown for a variety of elevating devices located on the elevated section shown in Figure 26 to part 679. The measuring location is indicated on each figure by the arrow. The measurement is made from where the line contacts the inside surface of the device.

Figure 25 to Part 679 – Elevating Device Clearance Measurement Locations for Modified Nonpelagic Trawl Gear