



# Eastern Great Basin – Aug 31

September 2011 Monthly Outlook, Oct/Nov/Dec Seasonal Outlook



Saddle Complex



Red Rock Fire

Shelby Law – Predictive Services Meteorologist- EGBCC  
Gina Dingman - Intelligence Coordinator- EGBCC

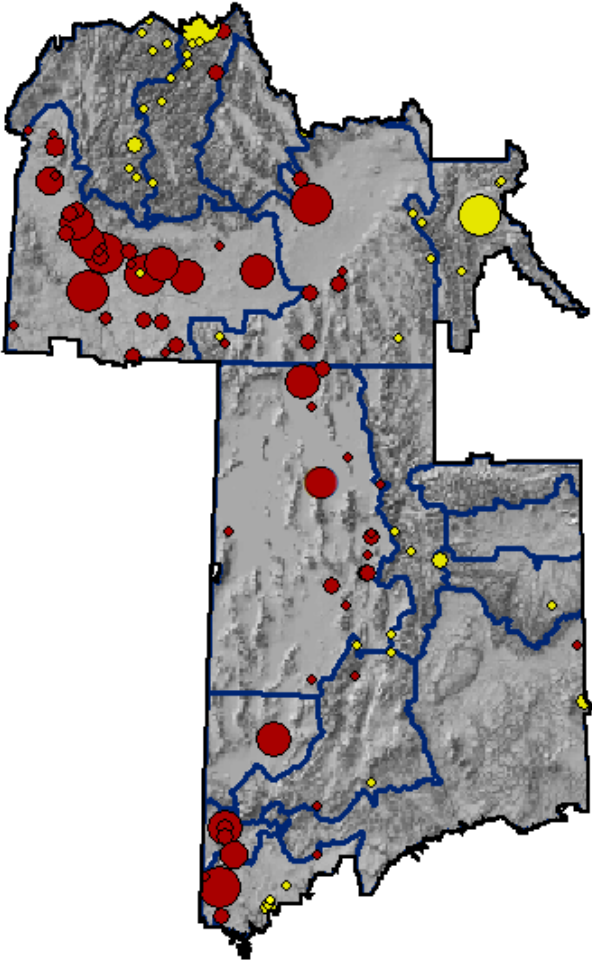


# Eastern Great Basin

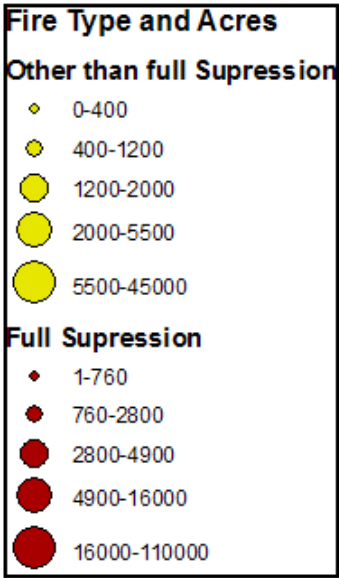
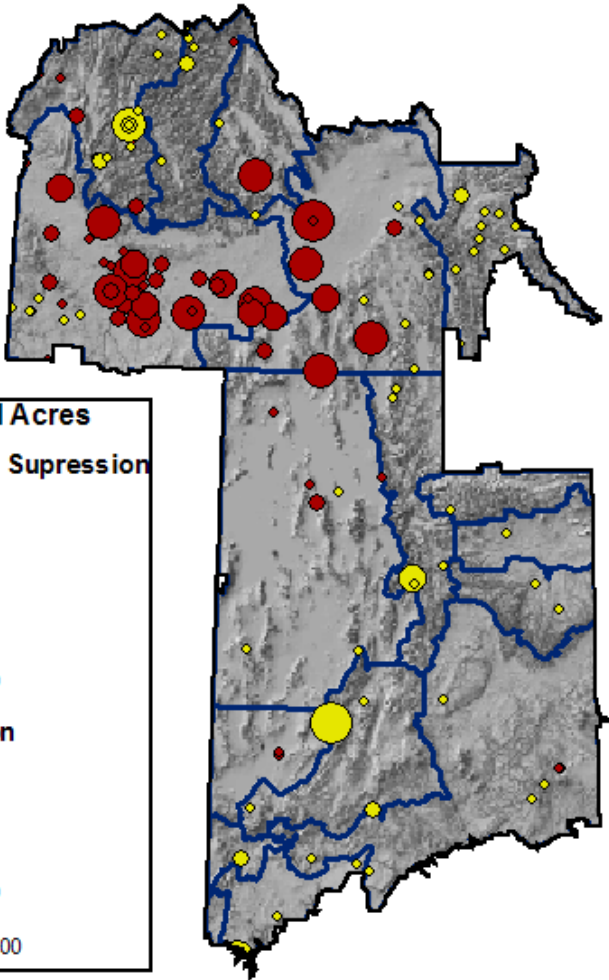
## Considerations

- ❑ Fires/Acres YDT
- ❑ Outlook Maps
- ❑ Idaho/WY
  - ❑ Precipitation/Temperature Anomalies
  - ❑ Fuels Overview
  - ❑ Weather Overview
- ❑ Utah/AZ Strip
  - ❑ Precipitation/Temperature Anomalies
  - ❑ Fuels Overview
  - ❑ Weather Overview

# 2011 209 Fires through Aug 31



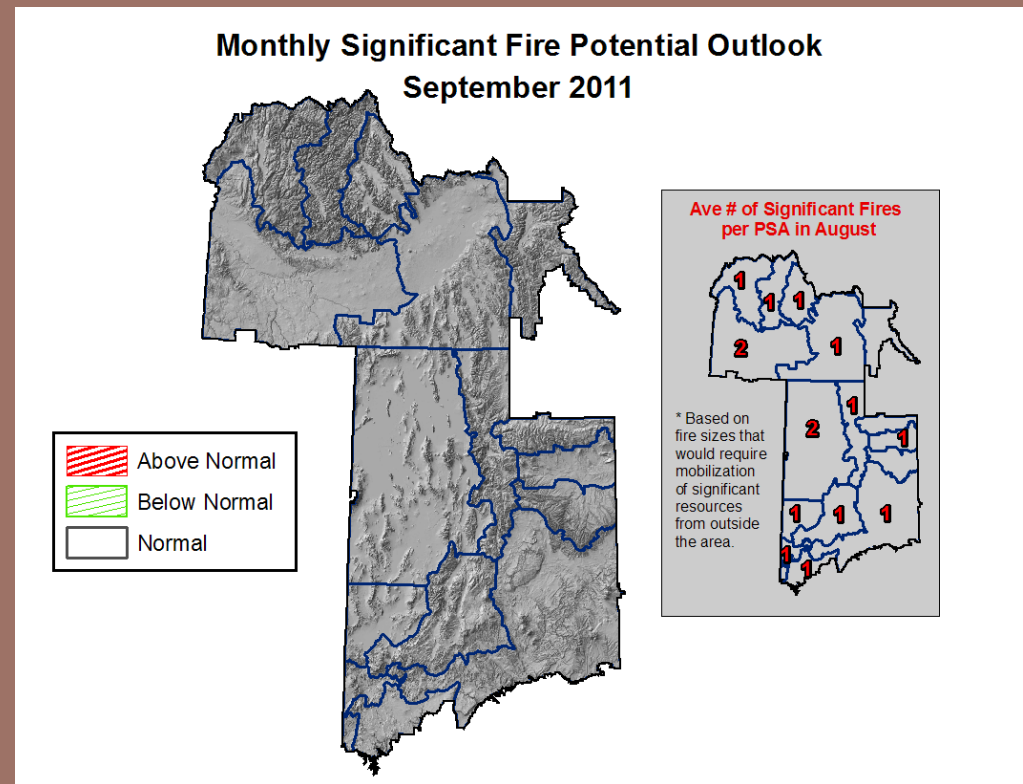
# 2010 209 Fires through Aug 31



# EGB September Outlook

## NORMAL REGION WIDE

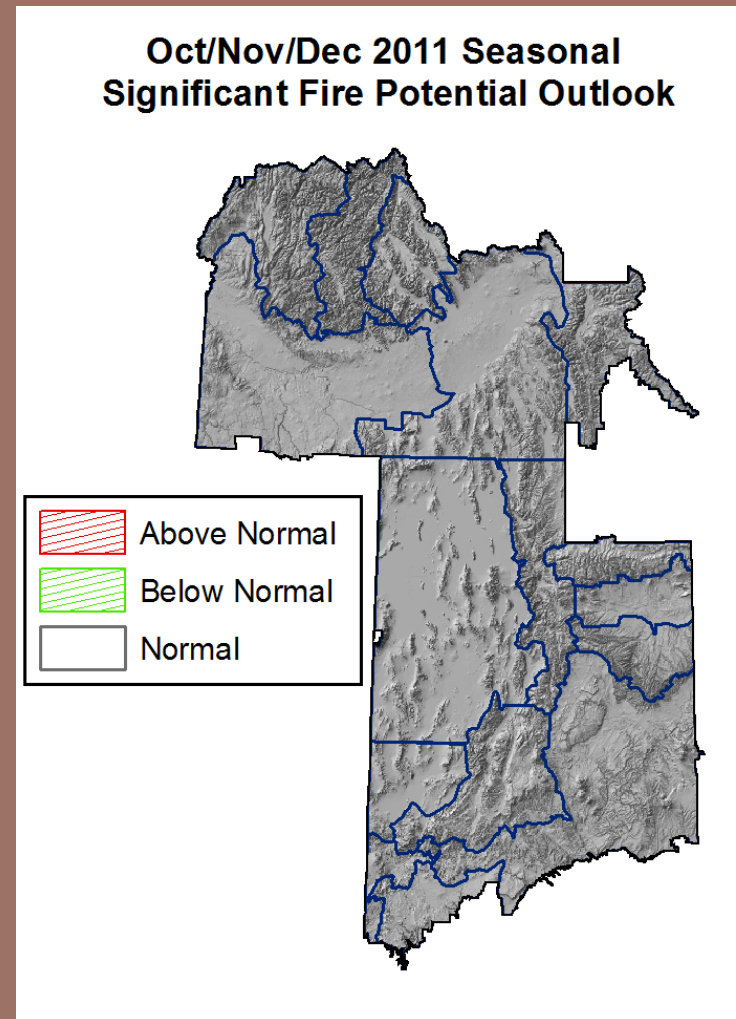
- Large fire activity normally continues for the first half of September before decreasing as stronger storm systems drop in from the northwest.
- Expect current large fire activity to continue for the next few weeks then decrease as days get shorter and night time cooling increases.
- Active afternoon burn periods are possible on hot, dry and windy days.



# EGB Oct/Nov/Dec Outlook

## NORMAL REGION WIDE

- ▣ These three months are considered 'Out of Season' for Eastern Great Basin and no significant large fire activity is anticipated during this time period.
- ▣ The occasional warm, dry, windy afternoon may cause fires to become active, but overnight cooler and higher RHs should allow fires to be quickly suppressed.

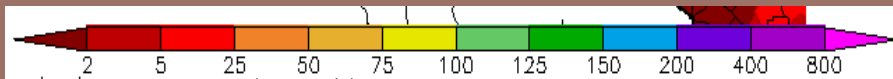
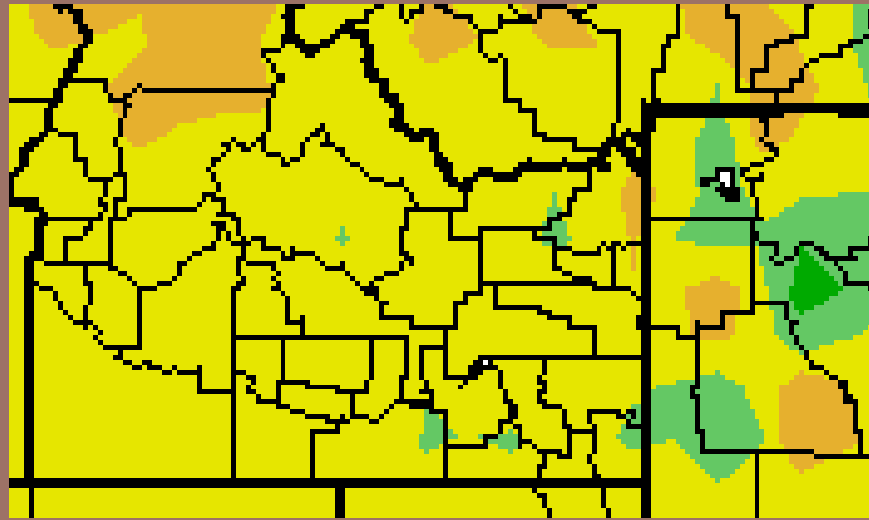


# Idaho / Wyoming

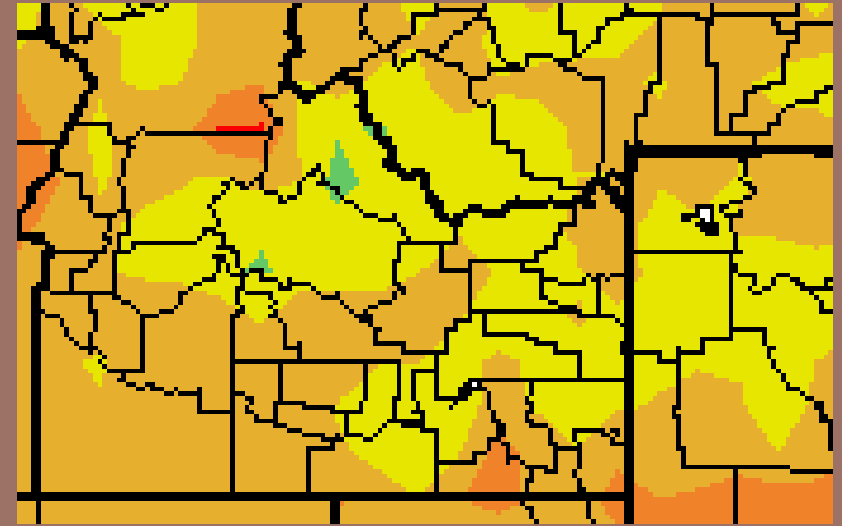
% of Normal Precipitation

8/2 – 8/31

Departure from Avg Temp



Precipitation was near normal region wide.



Temperatures were near to just above normal during August.

# ID/WY Weather/Fuels Outlook

## WEATHER

- ▣ September begins with mild temperatures followed by warming to seasonal levels.
- ▣ Warm, dry conditions are expected to continue through at least the first half of the month
- ▣ During the second half of the month low pressure systems have a better chance of moving in from the northwest bringing cooler temperatures and precipitation.

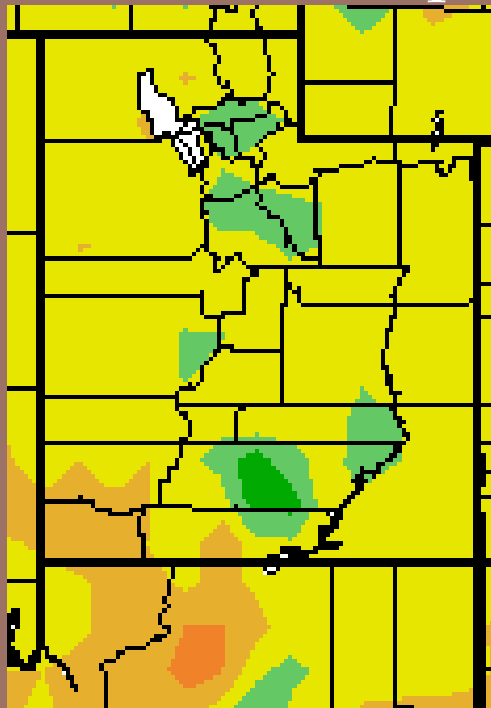
## FUELS

- ▣ Grasses are fully cured along the lowest elevations of the Snake River Plain
- ▣ Sagebrush live fuel moisture values have plateaued for the season. This years low values are slightly higher than normal.
- ▣ Bug killed 1000-hr fuels remain the high elevation fire problem across Idaho and western Wyoming.

# Utah / AZ Strip

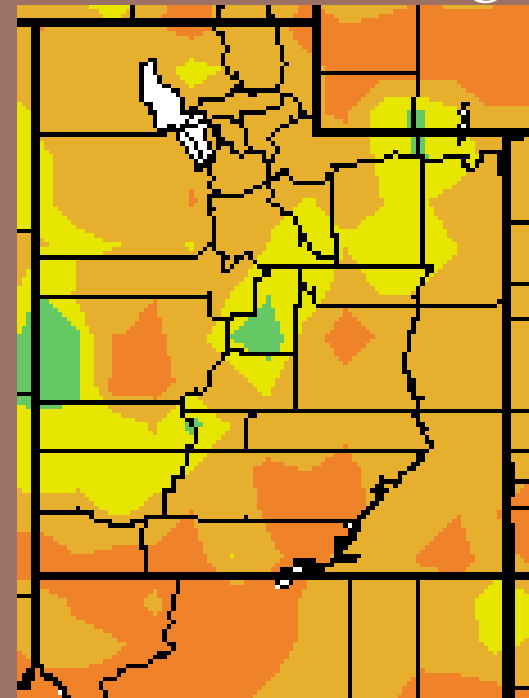
## May Precipitation and Temperature Anomalies

% of Normal Precipitation



8/2 – 8/31

Departure from Avg Temp



Precipitation was normal over western Utah and low elevations and was above normal over portions of the high elevations and south central Utah.

Temperatures were 1 – 4 degrees above normal across the area.



# UT/AZ Weather/Fuels Outlook

## WEATHER

- ▣ September begins with mild temperatures across the area. Another moisture surge looks to move north into Utah during the first week of the month for more thunderstorms.
- ▣ Conditions are expected to remain warm with isolated mountain thunderstorms possible through the first half of the month.
- ▣ During the second half of the month the changes increase for a more significant low pressure system to drop into the Great Basin for cooling and possibly showers.

## FUELS

- ▣ Low elevation cheat grass is cured region wide.
- ▣ Sagebrush and native grasses should reach sufficiently low levels to carry fire by the second week of the month.
- ▣ The high elevations of northern Utah will remain green through the month and likely not support large fires at all.