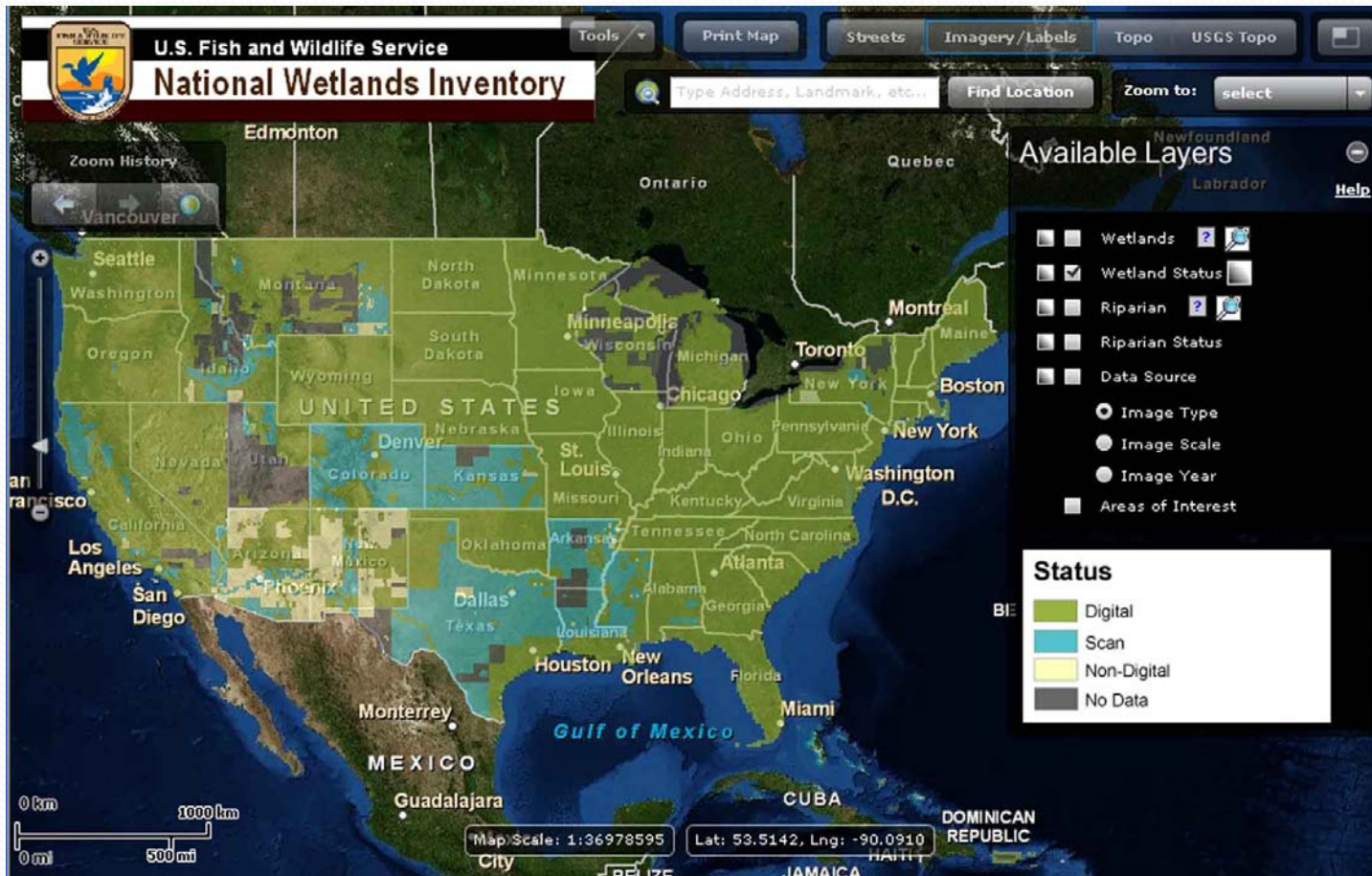


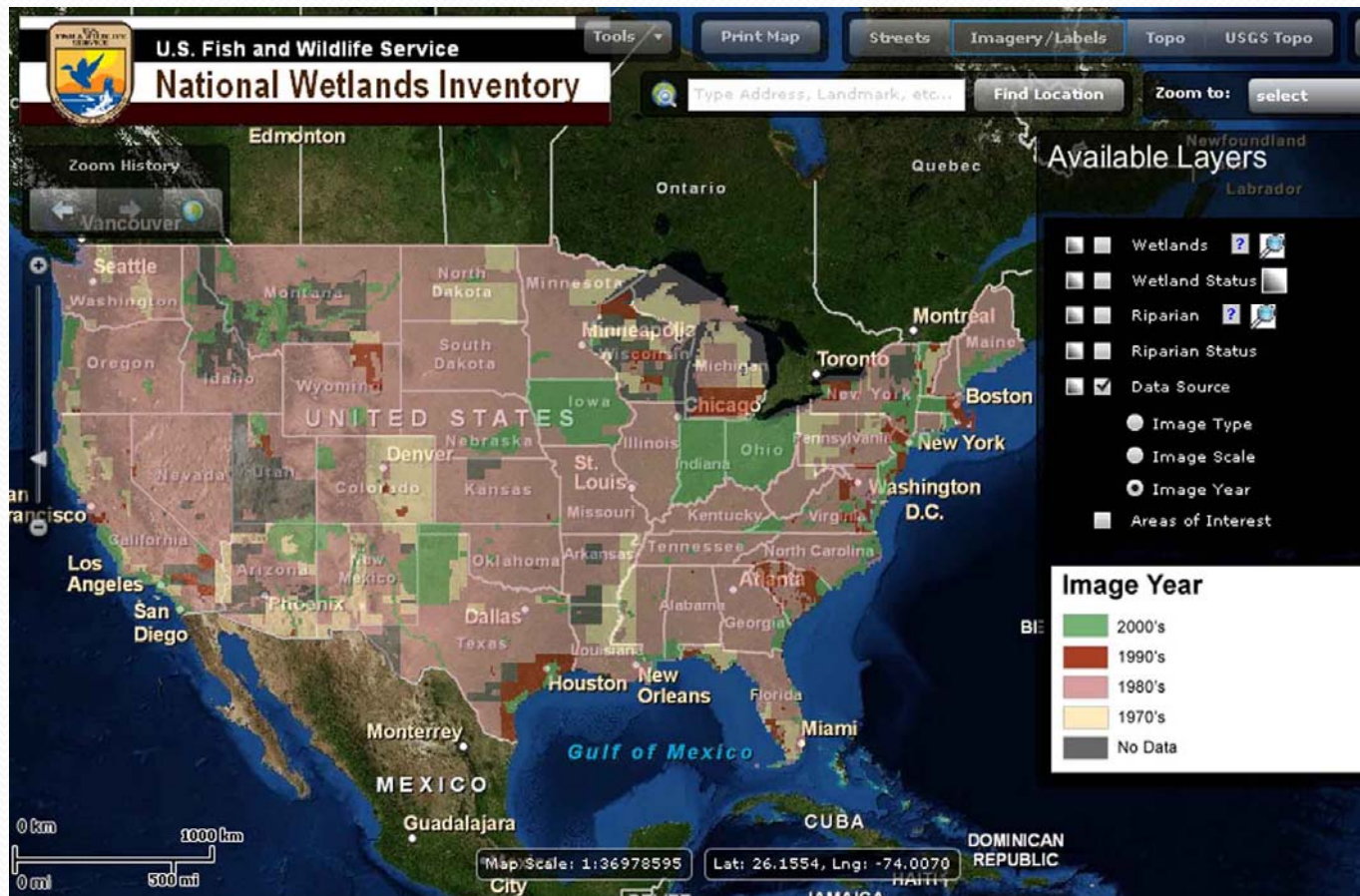
Wetlands Subcommittee

Briefing for
FGDC Coordinating Committee
For the National Wetlands Inventory
By Bill Wilen

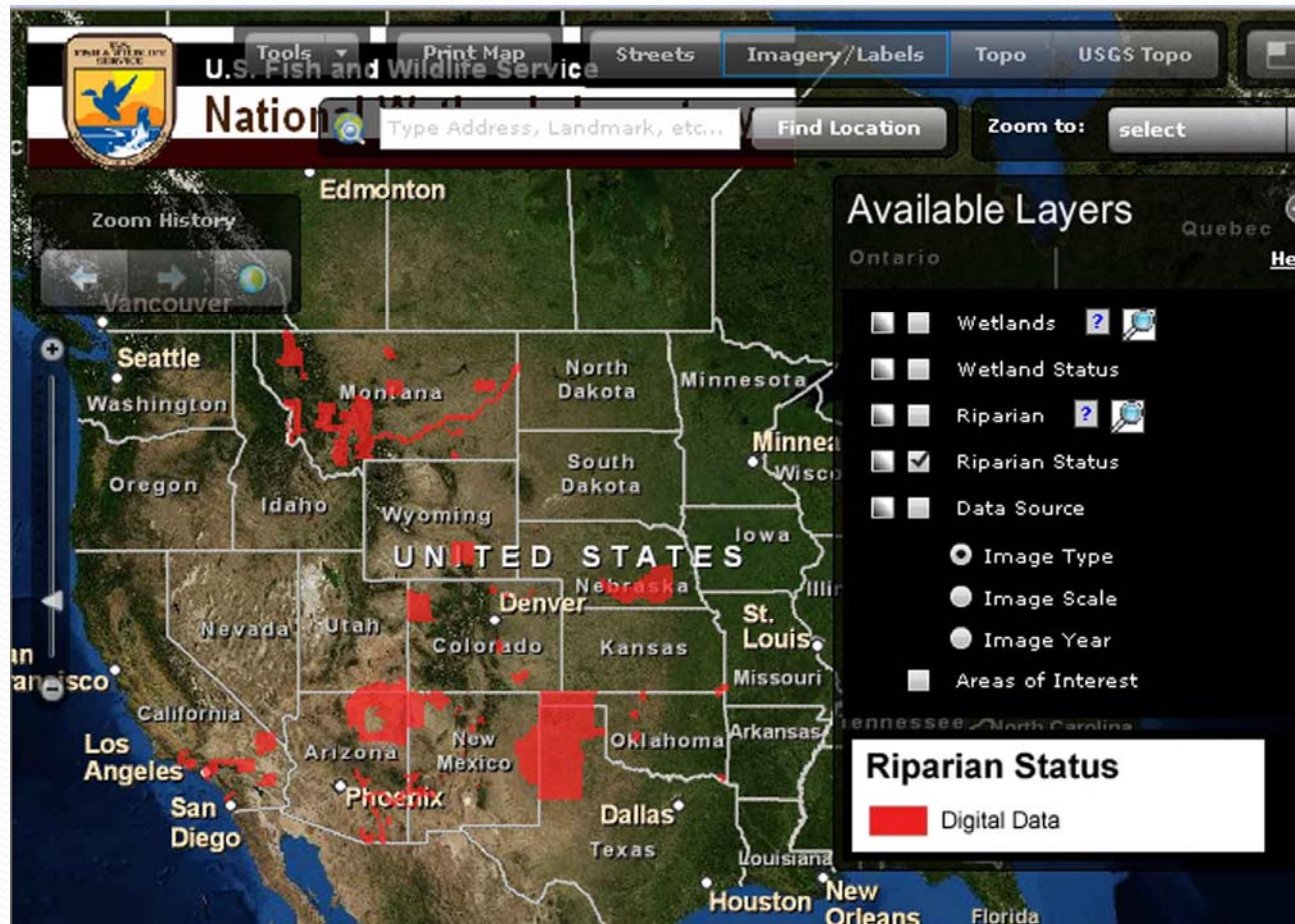
Where are we today?



Characteristics of NWI data

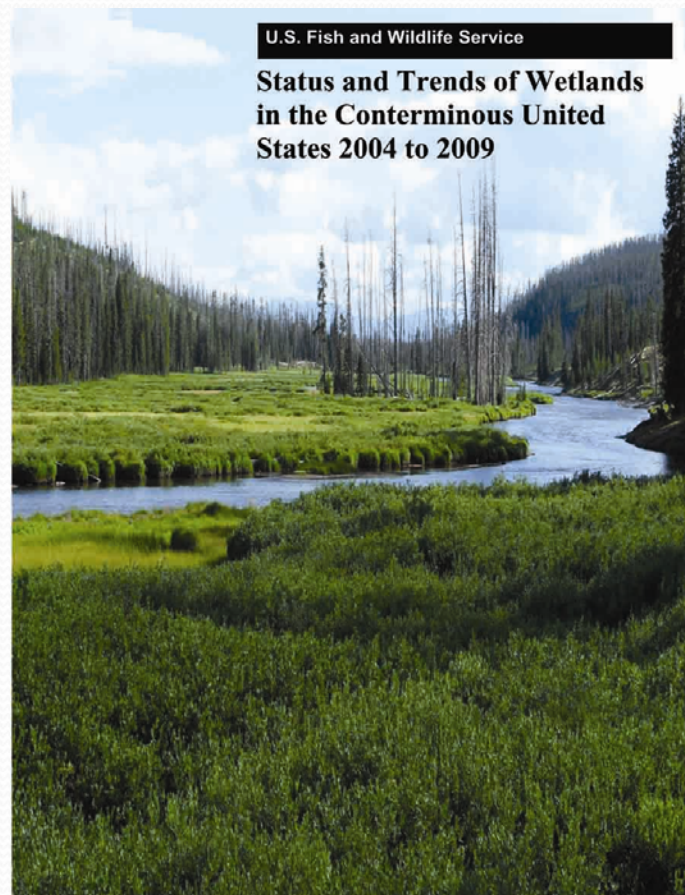


Riparian Status



Recent National Report

Fifth report to
Congress:
Status and Trends
of Wetlands and
Deepwater
Habitats of the
Conterminous
U.S. 2005 to 2009



Training Course

http://www.fws.gov/habitatconservation/nwi/wetlands_mapping_training/index.html



Glossary

Learn More

Course Menu



Wetland Mapping Training

[Module 1: What is the National Wetlands Inventory?](#)

[Module 2: National Wetland Classification Standard](#)

[Part 1: Definition of Wetlands](#)

[Part 2: Introduction to the Standard](#)

[Part 3: Systems and Subsystems](#)

[Part 4: Class, Subclass, and Dominance Types](#)

[Part 5: Water Regimes and Special Modifiers](#)

[Part 6: How to Apply the Classification Standard to Mapping](#)

[Module 3: National Wetland Mapping Standard](#)

[Part 1: Introduction \(Objectives, Scope, Applicability\)](#)

[Part 2: Standard Requirements and Quality Components](#)

[Module 4: Image Interpretation of Wetlands](#)

[Module 5: How to Get Started](#)

Purpose

This online Wetland Mapping Training course was developed by the U.S. Fish and Wildlife Service (Service) to assist our cooperators and data contributors in successfully submitting standards-compliant wetlands geospatial data to the National Wetlands Inventory Program (NWI). These data become part of the NWI-managed Wetlands Layer of the National Spatial Data Infrastructure (NSDI). Only standards-compliant data can be added to the Wetlands Layer.

Who should take this course?

It is recommended that everyone mapping wetlands take this course. These modules are designed for practicing mappers (image interpreters) skilled in GIS (geographic information systems) software who need special training for interpreting and classifying wetlands from aerial imagery or other remote sensing applications or skilled wetlands image interpreters who need to learn new required wetland standards. It includes biological information used to classify wetlands that can be understood by a non-biologist. However, this course does have limitations and persons taking this course may not be fully qualified to produce standards-compliant wetlands data without further training, experience, or a knowledgeable quality assurance manager.

Description

The Environmental Protection Agency, the Federal Geographic Data Committee, and the Association of State Wetlands Managers have provided resources or support to assist the Service in developing this wetlands mapping course. Modules available include (1) What is the National Wetlands Inventory?, (2) the National Wetlands Classification Standard (Cowardin et al.), and (3) the National Wetlands Mapping Standard. The "how-to" module for Image Interpretation (4) is available for beta testing and the module for Conducting a Wetlands Mapping Project (5) is under construction. Other modules are planned, including one for the Service's Riparian Mapping Standard and for coding for analyzing functional assessments (NWI-Plus).

Understanding the two National Standards covered in Modules 2 and 3 is vital for any wetland mapper.

LLWW (NWI+)

LLWW = Landscape Position, Landform, Waterflow Path, Waterbody (Tiner 2003).

Hydrogeomorphic-type classification system for estimating wetland functions on a landscape scale for planning.

Database with combined NWI and LLWW referred to as NWI+.

Wetland Mapping Consortium

Public site:
<http://clic.cses.vt.edu/WMC/>

Member site:
<https://scholar.vt.edu/portal/site/9c21338c-48e4-4055-8a2d-6464887a859b>

Scholar : Wetland Mapping Consortium : Home - Windows Internet Explorer

https://scholar.vt.edu/portal/site/9c21338c-48e4-4055-8a2d-6464887a859b

Scholar : Wetland Mapping Consortium : Home

VirginiaTech
Invent the Future

Scholar
a service of Learning Technologies

Logout

My Workspace Wetland Mapping Consortium

Home

- Announcements
- Calendar
- Messages
- Forums
- Email Archive
- Chat Room
- Blogger
- Polls
- Sign-up
- Lessons
- Resources
- Drop Box
- Podcasts
- Wiki
- 4help
- Association of State Wetland Managers: Mapping
- Using the WMC Scholar Site
- WMC external website
- Wetland Classification Image Gallery
- Site Editor
- Sections
- Request 4Help
- Help

Site Information Display

WETLAND MAPPING CONSORTIUM

To Get Started:

Click links on the left side of the page have content or expected content.

- Announcements: WMC information messages.
- Calendar: view scheduled WMC events.
- Forums: ask a question, post information.
- Chat Room: live online chat with other WMC members who are logged in.
- Resources: contains shared files organized by working groups.
- Using the WMC Scholar Site: training presentation.
- Roster: list of WMC registered users by email address.

For more information, use Help (lower left side)

(Updated 05-23-2011 by Jane Awl)

Recent Announcements

Announcements (viewing announcements from the last 10 days)

There are currently no announcements at this location.

Recent Chat Messages

Calendar

Options

November, 2011

Sun	Mon	Tue	Wed	Thu	Fri	Sat
30	31	1	2	3	4	5
6	7	8	9	10	11	12
13	14	15	16	17	18	19
20	21	22	23	24	25	26
27	28	29	30	1	2	3

Message Center Notifications

New Messages none

New in Forums none



In the Cloud

NWI participated in the GeoCloud GSA/FGDC initiative.

Launched our Wetlands Mapper as the first DOI geospatial Service in the cloud.

2011 Cooperators for Mapping

Cooperator Direct Funding

Bureau of Land Management
Department of Defense
FWS HAPET (Habitat and Populations
Evaluation Team)
FWS/R3 Plains & Prairie Potholes LCC
FWS Refuges I&M Program
Yurok Tribe

Cooperator Indirect Funding

CO Natural Heritage Program
Ducks Unlimited (DU)
IA Department of Natural Resources
MA Department of Environmental Protection
MN Department of Natural Resources
MT Natural Heritage Program
State of New Mexico
TX Tech University
U.S. Army Corps of Engineers
U.S. Forest Service
University of Oklahoma
WI Department of Natural Resources
3 Parameters Plus, Inc.

*Direct Funding: Funds given to NWI. Indirect Funding: Products (e.g. data) or services provided.

Customers

- 50 - 60 million data requests
- Federal, States, Tribes, Territories, local governments, private sector.
- WMS or REST: ORM2, ECOS, [The National Map]

CBRA

Coastal Barrier Resources Act (CBRA) Program

- Development of GeoCBRA; management as part of NWI IT business case.
- Partial CBRA funding in FY 2012; complete funding in FY 2013.

Staff – where we are

17 staff nationwide

- 1 person per region; 2 in AK (9 FTE)
- 2 staff in WO, plus shared Branch Chief (2.3 FTE)
- 5 staff at the National Standards and Support Team in Madison, WI (4.6 FTE); plus USGS support

