

LARGE TRUCK AND BUS CRASH FACTS 2007



U.S. Department
of Transportation

**Analysis Division
Federal Motor Carrier
Safety Administration**

January 2009



U.S. Department
of Transportation

FMCSA-RRA-09-029

LARGE TRUCK AND BUS CRASH FACTS 2007

January 2009

**Analysis Division
Federal Motor Carrier Safety Administration**

For more information, contact the Analysis Division at (202) 366-1861,
or visit our web sites at www.fmcsa.dot.gov and ai.volpe.dot.gov.

Contents

Introduction	1
Trends	3
Crashes	41
Vehicles	49
People	57

Tables

Trends

1. Large Truck Fatal Crash Statistics, 1975-2007	4
2. Passenger Vehicle Fatal Crash Statistics, 1975-2007	6
3. All Motor Vehicle Fatal Crash Statistics, 1975-2007	9
4. Large Truck Injury Crash Statistics, 1988-2007	10
5. Large Truck Property Damage Only (PDO) Crash Statistics, 1988-2007	10
6. Passenger Vehicle Injury Crash Statistics, 1988-2007	11
7. Passenger Vehicle Property Damage Only (PDO) Crash Statistics, 1988-2007	11
8. All Motor Vehicle Injury Crash Statistics, 1988-2007	15
9. All Motor Vehicle Property Damage Only (PDO) Crash Statistics, 1988-2007	15
10. Vehicle Occupants Killed in Large Truck Crashes by Vehicle Type, 1975-2007	16
11. Nonmotorists and Vehicle Occupants Killed in Large Truck Crashes, 1975-2007	17
12. Drivers in Fatal Crashes by Vehicle Type and Blood Alcohol Concentration, 1982-2007	18
13. Combination Truck Fatal Crash Statistics, 1975-2007	19
14. Single-Unit Truck Fatal Crash Statistics, 1975-2007	20
15. Combination Truck Injury Crash Statistics, 1988-2007	22
16. Combination Truck Property Damage Only (PDO) Crash Statistics, 1988-2007	22
17. Single-Unit Truck Injury Crash Statistics, 1988-2007	23
18. Single-Unit Truck Property Damage Only (PDO) Crash Statistics, 1988-2007	23
19. Large Truck and Passenger Vehicle Fatal Crashes per 100 Million Vehicle Miles Traveled by Roadway Function Class, 1981-2007	25
20. Bus Fatal Crash Statistics, 1975-2007	26
21. Bus Injury Crash Statistics, 1988-2007	27
22. Bus Property Damage Only (PDO) Crash Statistics, 1988-2007	27
23. Fatal Crashes Involving Buses by Type of Bus, 1975-2007	28
24. Buses in Fatal Crashes by Type of Bus, 1975-2007	29

Tables (Continued)

Trends (Continued)

25. Fatalities in Bus Crashes by Type of Bus, 1975-2007 30

26. Bus Occupant Fatalities in Bus Crashes by Type of Bus, 1975-2007 31

27. Large Truck and Bus Fatal Crash Statistics, 1975-2007 32

28. Large Truck and Bus Injury Crash Statistics, 1988-2007 33

29. Large Truck and Bus Property Damage Only (PDO) Crash Statistics, 1988-2007 34

30. Fatalities in Crashes Involving Large Trucks by State, 1997-2007 35

31. Fatal Crashes Involving Large Trucks by State, 1997-2007 36

32. Large Trucks Involved in Fatal Crashes by State, 1997-2007 37

33. Single-Vehicle Fatal Crashes Involving Large Trucks by State, 1997-2007 38

34. Multiple-Vehicle Fatal Crashes Involving Large Trucks by State, 1997-2007 39

Crashes

35. Crashes Involving Large Trucks by First Harmful Event and Crash Severity 42

36. Fatal Crashes Involving Large Trucks by Speed Limit 43

37. Fatal Crashes Involving Large Trucks by Roadway Function Class 43

38. Crashes Involving Large Trucks by Time of Day and Crash Severity 44

39. Crashes Involving Large Trucks by Day of Week and Crash Severity 44

40. Crashes Involving Large Trucks by Trafficway Flow and Crash Severity 45

41. Crashes Involving Large Trucks by Relation to Junction and Crash Severity 45

42. Crashes Involving Large Trucks by Relation to Roadway and Crash Severity 46

43. Crashes Involving Large Trucks by Weather Conditions and Crash Severity 47

44. Crashes Involving Large Trucks by Road Surface Conditions and Crash Severity 47

45. Crashes Involving Large Trucks by Light Conditions and Crash Severity 48

46. Crashes Involving Large Trucks by Construction/Maintenance Zone and Crash Severity 48

Vehicles

47. Large Trucks in Crashes by Vehicle Configuration 50

48. Large Trucks in Crashes by Cargo Body Type 51

49. Large Trucks in Crashes by Gross Vehicle Weight Rating 51

50. Large Trucks in Crashes by Hazardous Materials (HM) Cargo 52

51. Large Trucks in Crashes by Hazardous Materials (HM) Cargo Type and HM Release 52

52. Large Trucks in Crashes by Initial Point of Impact 53

53. Large Trucks in Crashes by Most Harmful Event for the Large Truck 54

54. Large Trucks in Crashes by Jackknife Occurrence 54

55. Large Trucks in Crashes with Passenger Vehicles by Crash Type and Severity 55

56. Large Trucks in Fatal Crashes with Passenger Vehicles by Crash Type and Driver-Related Factors Recorded 55

Tables (Continued)

People

57. Persons Killed and Injured in Crashes Involving Large Trucks	58
58. Persons Killed in Crashes Involving Large Trucks by Age and Sex	59
59. Persons Killed in Crashes Involving Passenger Vehicles by Age and Sex	59
60. Persons Injured in Crashes Involving Large Trucks by Age and Sex	60
61. Persons Injured in Crashes Involving Passenger Vehicles by Age and Sex	60
62. Persons Killed and Injured in Crashes Involving Large Trucks by Time of Day	61
63. Drivers of Large Trucks in Crashes by Age, Sex, and Crash Severity	62
64. Drivers of Passenger Vehicles in Crashes by Age, Sex, and Crash Severity	63
65. Drivers of Large Trucks in Fatal Crashes by Restraint Use and Ejection from the Vehicle	64
66. Drivers of Large Trucks in Fatal Crashes by Commercial Drivers License (CDL) Status and License Compliance	65
67. Drivers of Large Trucks in Fatal Crashes by Driver-Related Factors and Violations Recorded . . .	66

Figures

1. Fatal Crashes, Vehicles in Fatal Crashes, and Fatalities in Large Truck Crashes, 1975-2007	5
2. Large Trucks and Passenger Vehicles Involved in Fatal Crashes per 100 Million Vehicle Miles Traveled, 1975-2007	7
3. Fatalities in Crashes Involving Large Trucks and Passenger Vehicles per 100 Million Vehicle Miles Traveled, 1975-2007	8
4. Large Trucks and Passenger Vehicles Involved in Injury Crashes per 100 Million Vehicle Miles Traveled, 1988-2007	12
5. Persons Injured in Large Truck and Passenger Vehicle Crashes per 100 Million Vehicle Miles Traveled, 1988-2007	13
6. Large Trucks and Passenger Vehicles Involved in Property Damage Only Crashes per 100 Million Vehicle Miles Traveled, 1988-2007	14
7. Fatalities in Combination Truck, Single-Unit Truck, and Passenger Vehicle Crashes per 100 Million Vehicle Miles Traveled, 1975-2007	21
8. Persons Injured in Combination Truck, Single-Unit Truck, and Passenger Vehicle Crashes per 100 Million Vehicle Miles Traveled, 1988-2007	24

Introduction

This annual edition of *Large Truck and Bus Crash Facts* contains descriptive statistics about fatal, injury, and property damage only crashes involving large trucks and buses in 2007. Selected crash statistics on passenger vehicles are also presented for comparison purposes. In addition, the report includes 10 tables that show bus crash statistics.

Data Sources

The information in this report was compiled by the Analysis Division of the Federal Motor Carrier Safety Administration (FMCSA). The major sources for the data are described below:

- ◆ **Fatality Analysis Reporting System (FARS).** FARS, maintained by the National Highway Traffic Safety Administration (NHTSA), is a census of fatal crashes involving motor vehicles traveling on public trafficways. FARS is recognized as the most reliable national crash database, but it contains information only on fatal crashes. A large truck is defined in FARS as a truck with a gross vehicle weight rating (GVWR) of more than 10,000 pounds.
- ◆ **General Estimates System (GES).** GES, also maintained by NHTSA, is a probability-based nationally representative sample of all police-reported fatal, injury, and property damage only crashes. The data from GES yield national estimates, calculated using a weighting procedure, but cannot give State-level estimates. Also, GES is a sample of motor vehicle crashes, and the results generated are estimates. For this reason, all GES data shown in this report are rounded to the nearest thousand. The GES definition of a large truck is the same as the FARS definition.
- ◆ **Motor Carrier Management Information System (MCMIS) Crash File.** The MCMIS Crash File, maintained by FMCSA, contains data on trucks and buses in crashes that meet the SAFETYNET recommended threshold. A SAFETYNET reportable crash must involve a truck, used for commercial purposes, with a GVWR or gross combination weight rating greater than 10,000 pounds; or a commercial bus designed to transport more than eight people, including the driver. The crash must result in at least one fatality, at least one injury involving immediate medical attention away from the crash scene, or at least one vehicle disabled as a result of the crash and transported away from the crash scene. The crashes are reported by the States to FMCSA through the SAFETYNET computer software. The MCMIS Crash File is intended to be a census of trucks and buses involved in fatal, injury, and towaway crashes; however, some States do not report all FMCSA-eligible crashes. For 2007, States reported 144,983 trucks involved in crashes through SAFETYNET to the MCMIS Crash File. FMCSA continues to work with the States to improve data quality and reporting of all eligible large truck crashes to the MCMIS crash file.

FARS, GES, and MCMIS describe the events and details of motor vehicle crashes, but they do not include data on crash causation or fault.

- ◆ **Highway Statistics.** *Highway Statistics* is an annual publication of the Office of Highway Policy Information of the Federal Highway Administration (FHWA). State agencies report the data, ranging from driver licensing to highway finance, and FHWA aggregates them to get national totals. This report takes vehicle miles traveled and vehicle registrations from Table VM-1, “Annual Vehicle Distance Traveled in Miles and Related Data” of *Highway Statistics*.

Organization of the Report

This year's report is organized into four chapters: Trends, Crashes, Vehicles, and People. The Trends chapter shows data for 2007 in the context of available historical data for past years. In the other chapters, the 2007 data are shown in different ways, according to what is being counted. The Crashes chapter counts numbers of crashes; the Vehicles chapter counts vehicles in crashes; and the People chapter counts persons of all types involved in crashes. Four different types of counts are shown:

- ◆ **Crashes:** Numbers of crashes involving various vehicle types.
- ◆ **Vehicles in Crashes:** Numbers of vehicles involved in crashes. These counts may be larger than the number of crashes (fatal, injury, or property damage only), because more than one vehicle may be involved in a single crash.
- ◆ **People in Crashes:** Numbers of people killed or injured in crashes. These counts generally are larger than the number of crashes (fatal or injury), because more than one person may be killed or injured in a single crash. People killed or injured may be occupants of a truck, occupants of another vehicle, or nonmotorists (pedestrians or pedalcyclists).
- ◆ **Drivers in Crashes:** Numbers of vehicle drivers involved in crashes. These counts generally are equal to the numbers of vehicles involved in crashes.

Trends

The tables in this chapter present crash statistics for large trucks and buses over time. Fatal crash statistics generally are available from 1975, the first year of FARS data, through 2007. In some cases, such as for roadway function class or alcohol involvement, data are available only from 1981 or 1982 through 2007. Nonfatal crash statistics are available from 1988, the first year of GES data, through 2007. The statistics shown in this chapter represent crashes, vehicles, drivers, fatalities, and injuries in crashes. Below is a summary of some of the trend information in this section:

- ◆ Over the past 20 years (from 1987 to 2007) there has been a 58-percent increase in registered large trucks and a 70-percent increase in miles traveled by large trucks.
- ◆ Over the same time period, the number of large trucks involved in fatal crashes has declined by 10 percent, and the vehicle involvement rate for large trucks in fatal crashes has declined by 47 percent.
- ◆ Over the past 10 years (from 1997 to 2007) there has been a 27-percent increase in registered large trucks and a 19-percent increase in miles traveled by large trucks.
- ◆ From 1997 to 2007, the number of buses involved in fatal crashes declined by 6 percent, while the vehicle involvement rate for buses in fatal crashes declined by 8 percent.
- ◆ From 1997 to 2007, on average, intercity buses accounted for 12 percent of all buses involved in fatal crashes, and school buses and transit buses accounted for 39 percent and 36 percent, respectively, of all buses involved in fatal crashes.
- ◆ The number of large trucks involved in injury crashes has decreased by 21 percent over the past 10 years, and the vehicle involvement rate for large trucks in injury crashes has declined by 33 percent.
- ◆ The number of large trucks involved in property damage only crashes has decreased by 1 percent over the past 10 years, and the vehicle involvement rate for large trucks in property damage only crashes has declined by 17 percent.
- ◆ Alcohol involvement (blood alcohol concentration of 0.01 gram per deciliter [g/dL] or more) for large truck drivers in fatal crashes has declined by 44 percent over the past 10 years.

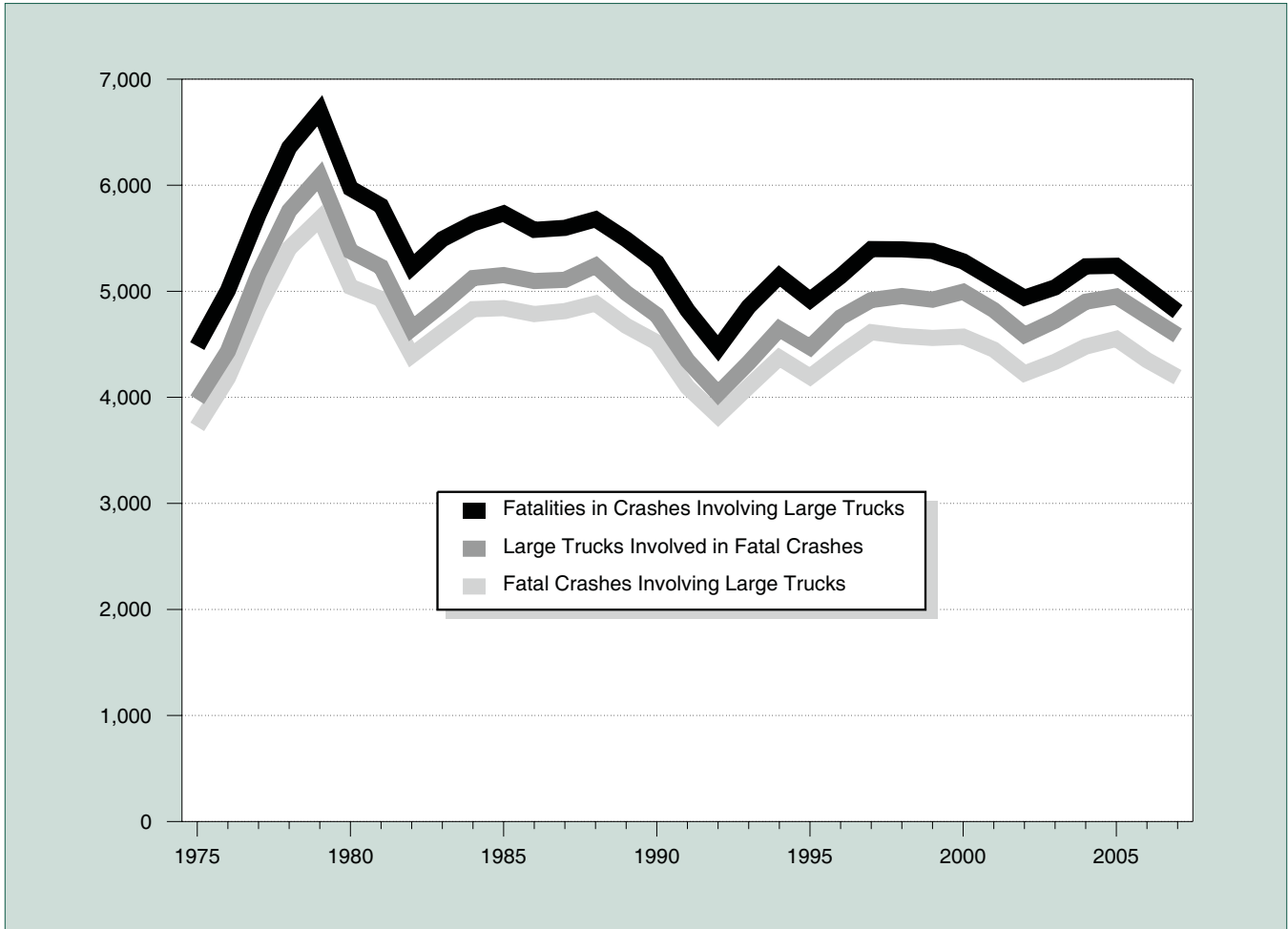
Table 1. Large Truck Fatal Crash Statistics, 1975-2007

Year	Fatal Crashes	Vehicles Involved	Occupant Fatalities	Total Fatalities	Million Vehicle Miles Traveled	Fatal Crashes per 100 Million Vehicle Miles Traveled	Vehicles Involved in Fatal Crashes per 100 Million Vehicle Miles Traveled	Fatalities per 100 Million Vehicle Miles Traveled	Large Trucks Registered
1975	3,722	3,977	961	4,483	81,330	4.58	4.89	5.51	5,362,369
1976	4,184	4,435	1,132	5,008	86,070	4.86	5.15	5.82	5,575,185
1977	4,843	5,164	1,287	5,723	95,021	5.10	5.43	6.02	5,689,903
1978	5,405	5,759	1,395	6,356	105,739	5.11	5.45	6.01	5,859,807
1979	5,684	6,084	1,432	6,702	109,004	5.21	5.58	6.15	5,891,571
1980	5,042	5,379	1,262	5,971	108,491	4.65	4.96	5.50	5,790,653
1981	4,928	5,230	1,133	5,806	108,702	4.53	4.81	5.34	5,716,278
1982	4,396	4,646	944	5,229	111,423	3.95	4.17	4.69	5,590,415
1983	4,615	4,877	982	5,491	116,132	3.97	4.20	4.73	5,508,392
1984	4,831	5,124	1,074	5,640	121,796	3.97	4.21	4.63	5,401,075
1985	4,841	5,153	977	5,734	123,504	3.92	4.17	4.64	5,996,337
1986	4,785	5,097	926	5,579	126,675	3.78	4.02	4.40	5,720,880
1987	4,813	5,108	852	5,598	133,517	3.60	3.83	4.19	5,718,266
1988	4,885	5,241	911	5,679	137,985	3.54	3.80	4.12	6,136,884
1989	4,674	4,984	858	5,490	142,749	3.27	3.49	3.85	6,226,482
1990	4,518	4,776	705	5,272	146,242	3.09	3.27	3.60	6,195,876
1991	4,097	4,347	661	4,821	149,543	2.74	2.91	3.22	6,172,146
1992	3,825	4,035	585	4,462	153,384	2.49	2.63	2.91	6,045,205
1993	4,101	4,328	605	4,856	159,888	2.56	2.71	3.04	6,088,155
1994	4,373	4,644	670	5,144	170,216	2.57	2.73	3.02	6,587,885
1995	4,194	4,472	648	4,918	178,156	2.35	2.51	2.76	6,719,421
1996	4,413	4,755	621	5,142	182,971	2.41	2.60	2.81	7,012,615
1997	4,614	4,917	723	5,398	191,477	2.41	2.57	2.82	7,083,326
1998	4,579	4,955	742	5,395	196,380	2.33	2.52	2.75	7,732,270
1999	4,560	4,920	759	5,380	202,688	2.25	2.43	2.65	7,791,426
2000	4,573	4,995	754	5,282	205,520	2.23	2.43	2.57	8,022,649
2001	4,451	4,823	708	5,111	209,032	2.13	2.31	2.45	7,857,675
2002	4,224	4,587	689	4,939	214,603	1.97	2.14	2.30	7,927,280
2003	4,335	4,721	726	5,036	217,917	1.99	2.17	2.31	7,756,888
2004	4,478	4,902	766	5,235	220,811	2.03	2.22	2.37	8,171,364
2005	4,551	4,951	804	5,240	222,523	2.05	2.22	2.35	8,481,999
2006	4,350	4,766	805	5,027	222,513	1.95	2.14	2.26	8,819,007
2007	4,190	4,584	802	4,808	226,963	1.85	2.02	2.12	9,027,624

Note: A large truck is defined as a truck with a gross vehicle weight rating (GVWR) greater than 10,000 pounds (includes medium and heavy trucks).

Sources: Vehicle Miles of Travel and Registered Vehicles: Federal Highway Administration. Fatal Crashes, Vehicles Involved, and Fatalities: National Highway Traffic Safety Administration, Fatality Analysis Reporting System (FARS).

Figure 1. Fatal Crashes, Vehicles in Fatal Crashes, and Fatalities in Large Truck Crashes, 1975-2007



Note: A large truck is defined as a truck with a gross vehicle weight rating (GVWR) greater than 10,000 pounds.
 Source: National Highway Traffic Safety Administration, Fatality Analysis Reporting System (FARS).

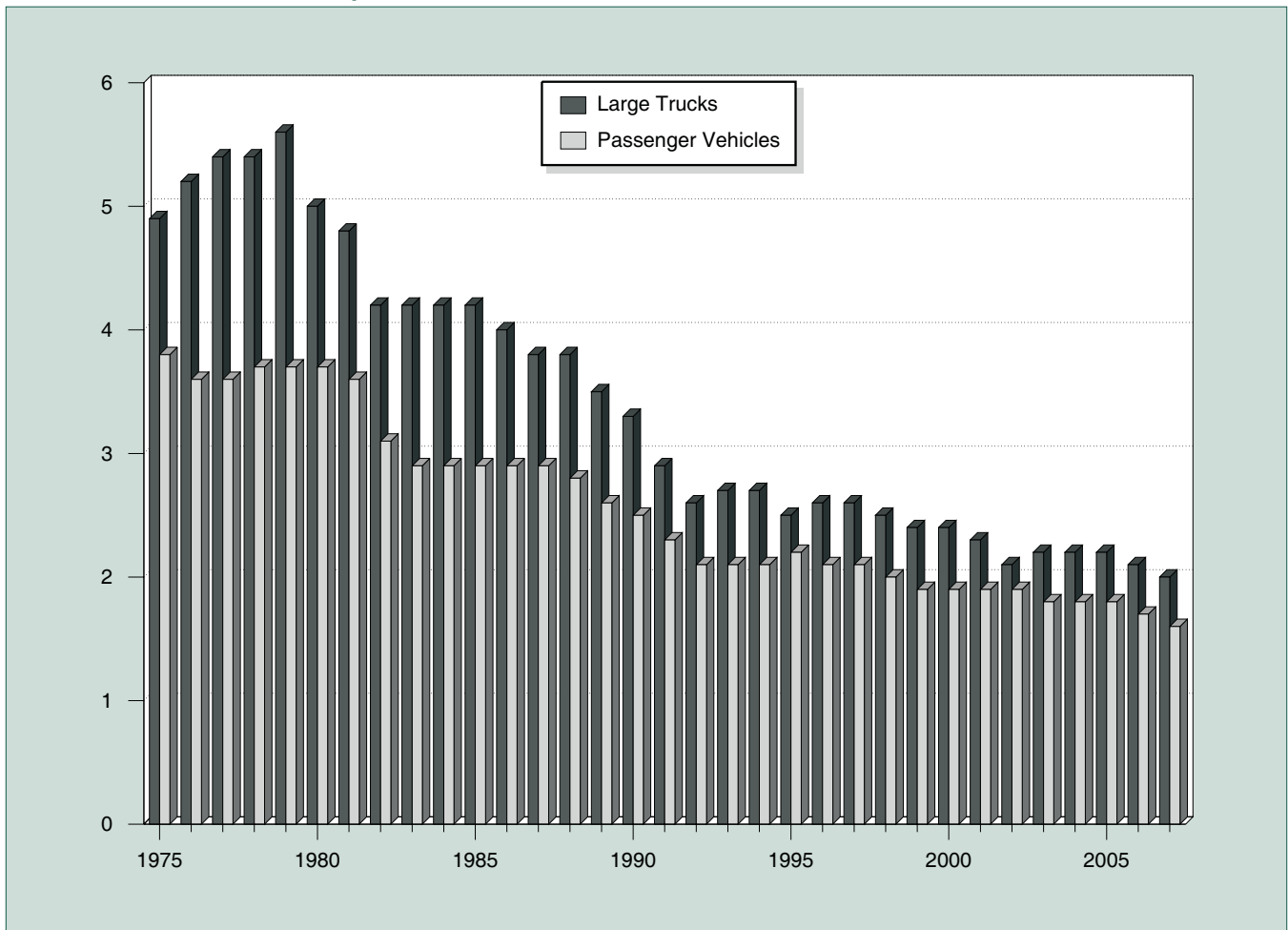
Table 2. Passenger Vehicle Fatal Crash Statistics, 1975-2007

Year	Fatal Crashes	Vehicles Involved	Occupant Fatalities	Total Fatalities	Million Vehicle Miles Traveled	Fatal Crashes per 100 Million Vehicle Miles Traveled	Vehicles Involved in Fatal Crashes per 100 Million Vehicle Miles Traveled	Fatalities per 100 Million Vehicle Miles Traveled	Passenger Vehicles Registered
1975	35,057	46,533	30,785	40,187	1,234,650	2.84	3.77	3.25	115,364,709
1976	35,242	46,506	31,604	40,724	1,304,049	2.70	3.57	3.12	119,806,386
1977	37,197	49,438	32,758	42,599	1,359,834	2.74	3.64	3.13	123,400,366
1978	39,226	52,442	34,898	44,870	1,425,922	2.75	3.68	3.15	129,141,048
1979	39,637	52,543	34,986	45,207	1,405,545	2.82	3.74	3.22	132,476,608
1980	39,623	51,739	34,935	45,139	1,402,531	2.83	3.69	3.22	134,831,752
1981	38,544	51,195	33,726	43,586	1,429,675	2.70	3.58	3.05	137,239,007
1982	34,619	45,651	29,689	39,262	1,467,854	2.36	3.11	2.67	139,244,282
1983	33,481	44,416	29,181	37,866	1,522,697	2.20	2.92	2.49	142,153,582
1984	34,979	46,621	30,116	39,382	1,585,049	2.21	2.94	2.48	147,435,149
1985	34,567	46,741	29,901	38,976	1,637,759	2.11	2.85	2.38	154,013,265
1986	36,612	49,522	32,261	41,373	1,694,082	2.16	2.92	2.44	157,031,560
1987	37,342	51,094	33,190	42,119	1,772,852	2.11	2.88	2.38	161,543,801
1988	38,252	52,263	34,114	43,069	1,872,478	2.04	2.79	2.30	166,118,639
1989	37,102	51,110	33,614	41,782	1,937,696	1.91	2.64	2.16	169,892,626
1990	36,281	49,705	32,693	40,879	1,982,837	1.83	2.51	2.06	173,193,097
1991	33,701	46,123	30,776	38,134	2,007,579	1.68	2.30	1.90	175,389,400
1992	32,109	44,465	29,485	36,323	2,078,432	1.54	2.14	1.75	174,182,793
1993	32,969	45,565	30,077	37,222	2,120,459	1.55	2.15	1.76	177,629,233
1994	33,390	46,626	30,901	37,742	2,170,723	1.54	2.15	1.74	181,482,575
1995	34,555	48,527	31,991	39,014	2,228,323	1.55	2.18	1.75	185,762,753
1996	34,792	48,973	32,438	39,265	2,286,394	1.52	2.14	1.72	190,051,664
1997	34,595	48,687	32,448	39,187	2,353,295	1.47	2.07	1.67	191,960,390
1998	34,274	48,403	31,899	38,539	2,417,852	1.42	2.00	1.59	195,749,209
1999	34,163	47,896	32,127	38,571	2,470,122	1.38	1.94	1.56	200,012,521
2000	34,379	48,300	32,225	38,695	2,523,346	1.36	1.91	1.53	203,913,482
2001	34,496	48,417	32,043	38,725	2,571,539	1.34	1.88	1.51	207,719,870
2002	35,123	49,042	32,843	39,514	2,624,508	1.34	1.87	1.51	211,992,662
2003	34,879	48,861	32,271	39,148	2,656,173	1.31	1.84	1.47	216,729,606
2004	34,530	48,168	31,866	38,759	2,727,054	1.27	1.77	1.42	228,275,978
2005	34,837	48,133	31,549	38,933	2,749,472	1.27	1.75	1.42	231,904,922
2006	34,204	46,671	30,686	38,140	2,773,025	1.23	1.68	1.38	234,524,720
2007	32,608	44,402	28,933	36,267	2,782,271	1.17	1.60	1.30	237,402,545

Note: A passenger vehicle is defined as a car or light truck (including pickups, vans, and sport utility vehicles).

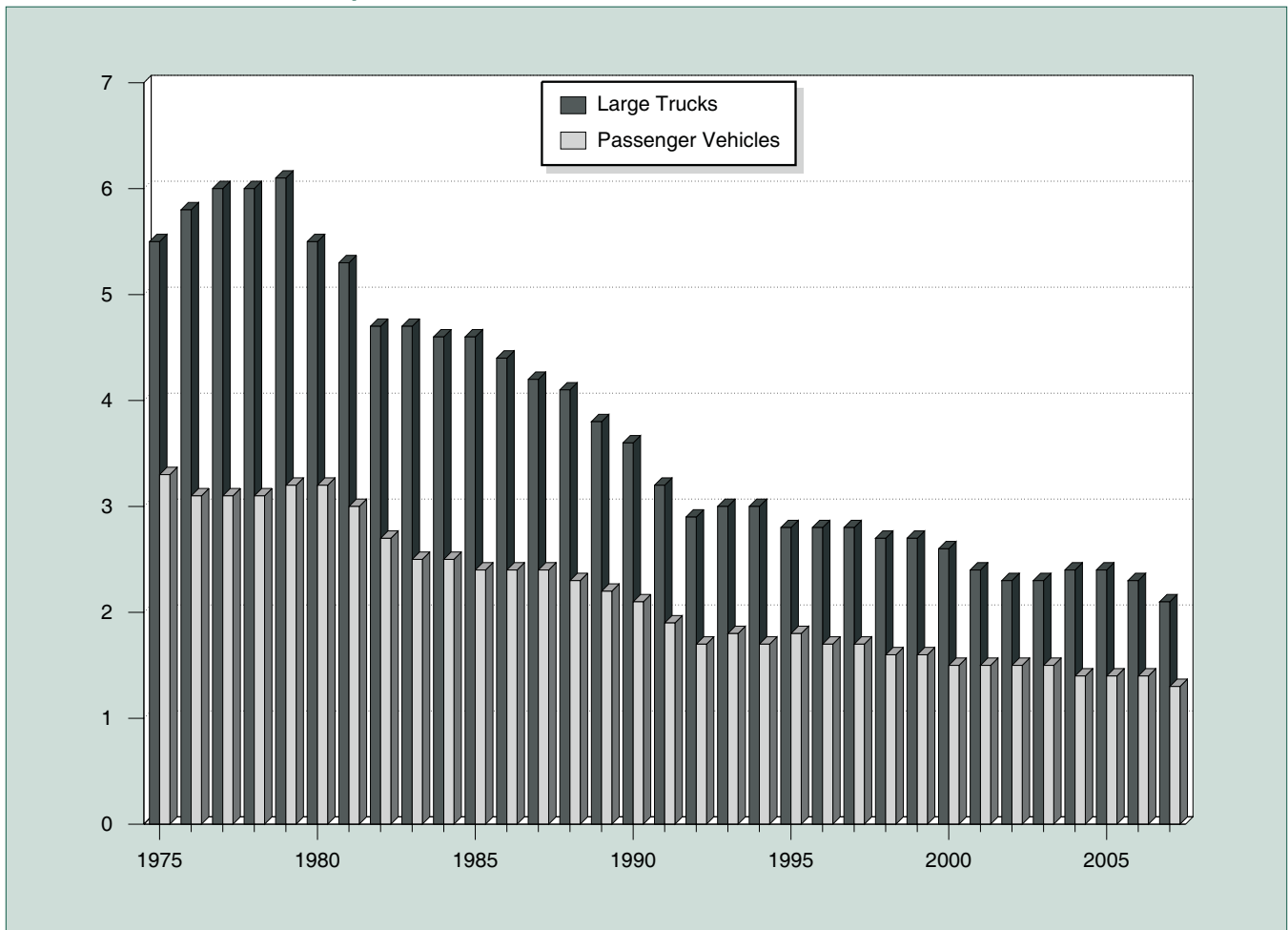
Sources: Vehicle Miles of Travel: Federal Highway Administration. Registered Vehicles: R.L. Polk & Co. Fatal Crashes, Vehicles Involved, and Fatalities: National Highway Traffic Safety Administration, Fatality Analysis Reporting System (FARS).

Figure 2. Large Trucks and Passenger Vehicles Involved in Fatal Crashes per 100 Million Vehicle Miles Traveled, 1975-2007



Notes: A large truck is defined as a truck with a gross vehicle weight rating (GVWR) greater than 10,000 pounds. A passenger vehicle is defined as a car or light truck (including pickups, vans, and sport utility vehicles). Sources: Vehicle Miles of Travel: Federal Highway Administration. Fatal Crashes and Vehicles Involved: National Highway Traffic Safety Administration, Fatality Analysis Reporting System (FARS).

Figure 3. Fatalities in Crashes Involving Large Trucks and Passenger Vehicles per 100 Million Vehicle Miles Traveled, 1975-2007



Notes: A large truck is defined as a truck with a gross vehicle weight rating (GVWR) greater than 10,000 pounds. A passenger vehicle is defined as a car or light truck (including pickups, vans, and sport utility vehicles). Sources: Vehicle Miles of Travel: Federal Highway Administration. Fatal Crashes and Vehicles Involved: National Highway Traffic Safety Administration, Fatality Analysis Reporting System (FARS).

Table 3. All Motor Vehicle Fatal Crash Statistics, 1975-2007

Year	Fatal Crashes	Vehicles Involved	Occupant Fatalities	Total Fatalities	Million Vehicle Miles Traveled	Fatal Crashes per 100 Million Vehicle Miles Traveled	Vehicles Involved in Fatal Crashes per 100 Million Vehicle Miles Traveled	Fatalities per 100 Million Vehicle Miles Traveled	Motor Vehicles Registered
1975	39,161	55,534	35,925	44,525	1,327,664	2.95	4.18	3.35	126,153,304
1976	39,747	56,084	37,102	45,523	1,402,380	2.83	4.00	3.25	130,793,242
1977	42,211	60,516	39,150	47,878	1,467,027	2.88	4.13	3.26	134,514,286
1978	44,433	64,144	41,533	50,331	1,544,704	2.88	4.15	3.26	140,374,064
1979	45,223	64,762	41,930	51,093	1,529,133	2.96	4.24	3.34	144,317,076
1980	45,284	63,485	41,927	51,091	1,527,295	2.96	4.16	3.35	146,845,134
1981	44,000	62,699	40,424	49,301	1,555,308	2.83	4.03	3.17	149,330,311
1982	39,092	56,455	35,646	43,945	1,595,010	2.45	3.54	2.76	151,147,755
1983	37,976	55,106	34,843	42,589	1,652,788	2.30	3.33	2.58	153,829,970
1984	39,631	57,972	36,284	44,257	1,720,269	2.30	3.37	2.57	158,899,717
1985	39,196	58,271	36,043	43,825	1,774,826	2.21	3.28	2.47	166,047,491
1986	41,090	60,792	38,234	46,087	1,834,872	2.24	3.31	2.51	168,545,286
1987	41,438	61,836	38,565	46,390	1,921,204	2.16	3.22	2.41	172,749,894
1988	42,130	62,703	39,170	47,087	2,025,962	2.08	3.09	2.32	177,455,476
1989	40,741	60,870	38,087	45,582	2,096,487	1.94	2.90	2.17	181,164,568
1990	39,836	59,292	37,134	44,599	2,144,362	1.86	2.77	2.08	184,275,422
1991	36,937	54,765	34,740	41,508	2,172,050	1.70	2.52	1.91	186,370,190
1992	34,942	52,227	32,880	39,250	2,247,151	1.55	2.32	1.75	184,937,848
1993	35,780	53,777	33,574	40,150	2,296,378	1.56	2.34	1.75	188,349,676
1994	36,254	54,911	34,318	40,716	2,357,588	1.54	2.33	1.73	192,497,438
1995	37,241	56,524	35,291	41,817	2,422,696	1.54	2.33	1.73	197,064,868
1996	37,494	57,347	35,696	42,065	2,485,848	1.51	2.31	1.69	201,630,659
1997	37,324	57,060	35,725	42,013	2,561,695	1.46	2.23	1.64	203,567,637
1998	37,107	56,922	35,382	41,501	2,631,522	1.41	2.16	1.58	208,076,469
1999	37,140	56,820	35,875	41,717	2,691,056	1.38	2.11	1.55	212,685,157
2000	37,526	57,594	36,348	41,945	2,746,925	1.37	2.10	1.53	217,028,324
2001	37,862	57,918	36,440	42,196	2,797,287	1.35	2.07	1.51	221,230,149
2002	38,491	58,426	37,375	43,005	2,855,508	1.35	2.05	1.51	225,684,815
2003	38,477	58,877	37,341	42,884	2,890,450	1.33	2.04	1.48	230,633,079
2004	38,444	58,729	37,304	42,836	2,964,788	1.30	1.98	1.44	243,010,550
2005	39,252	59,751	37,727	43,510	2,989,430	1.31	2.00	1.46	247,421,120
2006	38,648	58,302	37,001	42,708	3,014,371	1.28	1.93	1.42	250,844,644
2007	37,248	56,100	35,603	41,059	3,029,822	1.23	1.85	1.36	254,403,081

Sources: Vehicle Miles of Travel: Federal Highway Administration. Registered Vehicles: Federal Highway Administration and R.L. Polk & Co. Fatal Crashes, Vehicles Involved, and Fatalities: National Highway Traffic Safety Administration, Fatality Analysis Reporting System (FARS).

Table 4. Large Truck Injury Crash Statistics, 1988-2007

Year	Injury Crashes	Vehicles Involved	Persons Injured	Million Vehicle Miles Traveled	Injury Crashes per 100 Million Vehicle Miles Traveled	Vehicles Involved in Injury Crashes per 100 Million Vehicle Miles Traveled	Persons Injured per 100 Million Vehicle Miles Traveled	Large Trucks Registered
1988	94,000	96,000	130,000	137,985	67.9	69.5	94.4	6,136,884
1989	106,000	110,000	156,000	142,749	74.6	77.2	109.0	6,226,481
1990	102,000	107,000	150,000	146,242	69.7	73.3	102.6	6,195,876
1991	75,000	78,000	110,000	149,543	50.2	52.2	73.9	6,172,146
1992	91,000	95,000	139,000	153,384	59.2	61.8	90.4	6,045,205
1993	93,000	97,000	133,000	159,888	57.9	60.4	83.2	6,088,155
1994	91,000	96,000	133,000	170,216	53.3	56.2	78.1	6,587,884
1995	80,000	84,000	117,000	178,156	44.7	46.9	65.7	6,719,420
1996	89,000	94,000	129,000	182,971	48.6	51.3	70.7	7,012,615
1997	92,000	96,000	131,000	191,477	48.0	49.9	68.3	7,083,326
1998	85,000	89,000	127,000	196,380	43.3	45.1	64.8	7,732,270
1999	95,000	101,000	142,000	202,688	46.9	49.6	69.9	7,791,426
2000	96,000	101,000	140,000	205,520	46.9	48.9	68.0	8,022,649
2001	86,000	90,000	131,000	209,032	41.0	43.0	62.5	7,857,675
2002	90,000	94,000	130,000	214,603	41.9	43.9	60.4	7,927,280
2003	85,000	89,000	122,000	217,917	38.8	40.7	56.0	7,756,888
2004	83,000	87,000	116,000	220,811	37.5	39.3	52.6	8,171,364
2005	78,000	82,000	114,000	222,523	34.8	37.0	51.2	8,481,999
2006	77,000	80,000	106,000	222,513	34.5	36.1	47.5	8,819,007
2007	72,000	76,000	101,000	226,963	31.8	33.4	44.5	9,027,624

Notes: "Persons Injured" includes all nonfatally injured persons in injury and fatal crashes. A large truck is defined as a truck with a gross vehicle weight rating (GVWR) greater than 10,000 pounds.

Sources: Vehicle Miles of Travel and Registered Vehicles: Federal Highway Administration. Injury Crashes, Vehicles Involved, and Injuries: National Highway Traffic Safety Administration, General Estimates System (GES).

Table 5. Large Truck Property Damage Only (PDO) Crash Statistics, 1988-2007

Year	PDO Crashes	Vehicles Involved	Million Vehicle Miles Traveled	PDO Crashes per 100 Million Vehicle Miles Traveled	Vehicles Involved in PDO Crashes per 100 Million Vehicle Miles Traveled	Large Trucks Registered
1988	291,000	297,000	137,985	210.7	215.2	6,136,884
1989	291,000	300,000	142,749	203.8	210.5	6,226,481
1990	265,000	273,000	146,242	181.4	186.9	6,195,876
1991	240,000	248,000	149,543	160.2	166.0	6,172,146
1992	268,000	277,000	153,384	174.8	180.8	6,045,205
1993	287,000	296,000	159,888	179.2	185.1	6,088,155
1994	350,000	360,000	170,216	205.4	211.6	6,587,884
1995	279,000	289,000	178,156	156.7	162.4	6,719,420
1996	285,000	295,000	182,971	155.8	161.3	7,012,615
1997	325,000	337,000	191,477	169.6	176.1	7,083,326
1998	302,000	318,000	196,380	153.8	162.0	7,732,270
1999	353,000	369,000	202,688	174.1	182.2	7,791,426
2000	337,000	351,000	205,520	163.9	170.9	8,022,649
2001	319,000	335,000	209,032	152.8	160.2	7,857,675
2002	322,000	336,000	214,603	150.2	156.3	7,927,280
2003	347,000	363,000	217,917	159.3	166.6	7,756,888
2004	312,000	324,000	220,811	141.2	146.9	8,171,364
2005	341,000	354,000	222,523	153.2	159.2	8,481,999
2006	287,000	300,000	222,513	128.9	134.7	8,819,007
2007	317,000	333,000	226,963	139.8	146.8	9,027,624

Note: A large truck is defined as a truck with a gross vehicle weight rating (GVWR) greater than 10,000 pounds.

Sources: Vehicle Miles of Travel and Registered Vehicles: Federal Highway Administration. PDO Crashes and Vehicles Involved: National Highway Traffic Safety Administration, General Estimates System (GES).

Table 6. Passenger Vehicle Injury Crash Statistics, 1988-2007

Year	Injury Crashes	Vehicles Involved	Persons Injured	Million Vehicle Miles Traveled	Injury Crashes per 100 Million Vehicle Miles Traveled	Vehicles Involved in Injury Crashes per 100 Million Vehicle Miles Traveled	Persons Injured per 100 Million Vehicle Miles Traveled	Passenger Vehicles Registered
1988	2,166,000	3,756,000	3,335,000	1,872,478	115.7	200.6	178.1	166,118,639
1989	2,093,000	3,619,000	3,211,000	1,937,696	108.0	186.7	165.7	169,892,626
1990	2,062,000	3,567,000	3,144,000	1,982,837	104.0	179.9	158.5	173,193,097
1991	1,953,000	3,404,000	3,027,000	2,007,579	97.3	169.5	150.8	175,389,400
1992	1,938,000	3,399,000	3,006,000	2,078,432	93.2	163.5	144.6	174,182,793
1993	1,970,000	3,474,000	3,087,000	2,120,459	92.9	163.8	145.6	177,629,233
1994	2,080,000	3,697,000	3,214,000	2,170,723	95.8	170.3	148.1	181,482,575
1995	2,170,000	3,938,000	3,410,000	2,228,323	97.4	176.7	153.0	185,762,753
1996	2,192,000	3,954,000	3,413,000	2,286,394	95.9	173.0	149.3	190,051,664
1997	2,104,000	3,801,000	3,295,000	2,353,295	89.4	161.5	140.0	191,960,390
1998	1,987,000	3,604,000	3,141,000	2,417,852	82.2	149.1	129.9	195,749,209
1999	2,005,000	3,603,000	3,175,000	2,470,122	81.2	145.9	128.5	200,012,521
2000	2,017,000	3,605,000	3,123,000	2,523,346	79.9	142.9	123.8	203,913,482
2001	1,954,000	3,496,000	2,974,000	2,571,539	76.0	136.0	115.7	207,719,870
2002	1,877,000	3,346,000	2,863,000	2,624,508	71.5	127.5	109.1	211,992,662
2003	1,873,000	3,362,000	2,828,000	2,656,173	70.5	126.6	106.5	216,729,606
2004	1,802,000	3,236,000	2,718,000	2,727,054	66.1	118.7	99.7	228,275,978
2005	1,754,000	3,102,000	2,625,000	2,749,472	63.8	112.8	95.5	231,904,922
2006	1,681,000	2,995,000	2,500,000	2,773,025	60.6	108.0	90.2	234,524,720
2007	1,642,000	2,871,000	2,412,000	2,782,271	59.0	103.2	86.7	237,402,545

Notes: "Persons Injured" includes all nonfatally injured persons in injury and fatal crashes. A passenger vehicle is defined as a car or light truck (including pickups, vans, and sport utility vehicles).

Sources: Vehicle Miles of Travel: Federal Highway Administration. Registered Vehicles: R.L. Polk & Co. Injury Crashes, Vehicles Involved, and Injuries: National Highway Traffic Safety Administration, General Estimates System (GES).

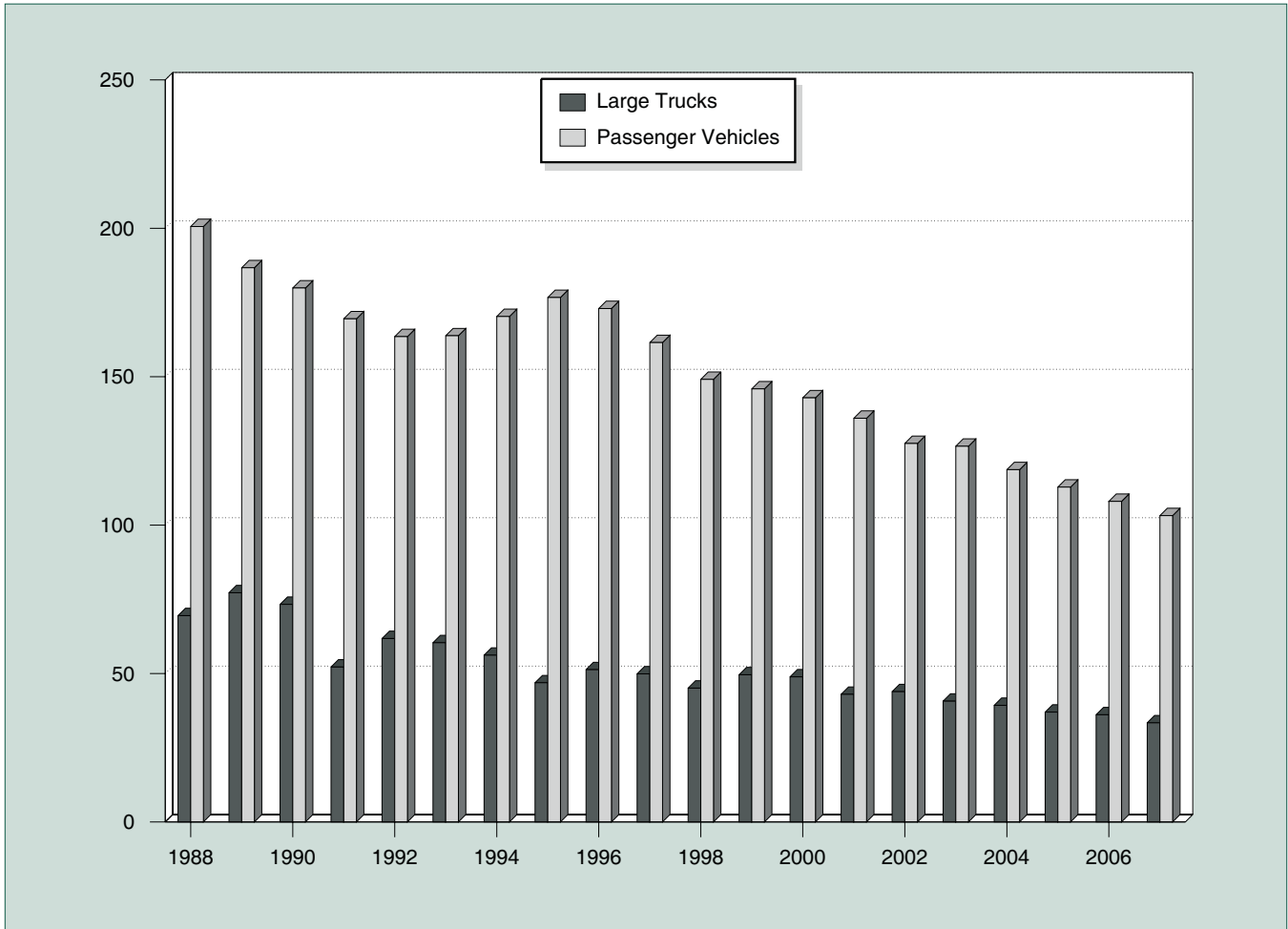
Table 7. Passenger Vehicle Property Damage Only (PDO) Crash Statistics, 1988-2007

Year	PDO Crashes	Vehicles Involved	Million Vehicle Miles Traveled	PDO Crashes per 100 Million Vehicle Miles Traveled	Vehicles Involved in PDO Crashes per 100 Million Vehicle Miles Traveled	Passenger Vehicles Registered
1988	4,506,000	7,592,000	1,872,478	240.6	405.5	166,118,639
1989	4,355,000	7,291,000	1,937,696	224.8	376.2	169,892,626
1990	4,207,000	7,140,000	1,982,837	212.2	360.1	173,193,097
1991	3,985,000	6,759,000	2,007,579	198.5	336.7	175,389,400
1992	3,872,000	6,556,000	2,078,432	186.3	315.4	174,182,793
1993	3,937,000	6,673,000	2,120,459	185.7	314.7	177,629,233
1994	4,205,000	7,149,000	2,170,723	193.7	329.3	181,482,575
1995	4,347,000	7,484,000	2,228,323	195.1	335.8	185,762,753
1996	4,403,000	7,555,000	2,286,394	192.6	330.4	190,051,664
1997	4,331,000	7,430,000	2,353,295	184.0	315.7	191,960,390
1998	4,168,000	7,211,000	2,417,852	172.4	298.2	195,749,209
1999	4,058,000	6,961,000	2,470,122	164.3	281.8	200,012,521
2000	4,151,000	7,088,000	2,523,346	164.5	280.9	203,913,482
2001	4,168,000	7,079,000	2,571,539	162.1	275.3	207,719,870
2002	4,228,000	7,199,000	2,624,508	161.1	274.3	211,992,662
2003	4,230,000	7,160,000	2,656,173	159.3	269.6	216,729,606
2004	4,170,000	7,102,000	2,727,054	152.9	260.4	228,275,978
2005	4,174,000	7,088,000	2,749,472	151.8	257.8	231,904,922
2006	4,084,000	6,979,000	2,773,025	147.3	251.7	234,524,720
2007	4,141,000	7,022,000	2,782,271	148.8	252.4	237,402,545

Note: A passenger vehicle is defined as a car or light truck (including pickups, vans, and sport utility vehicles).

Sources: Vehicle Miles of Travel: Federal Highway Administration. Registered Vehicles: R.L. Polk & Co. PDO Crashes and Vehicles Involved: National Highway Traffic Safety Administration, General Estimates System (GES).

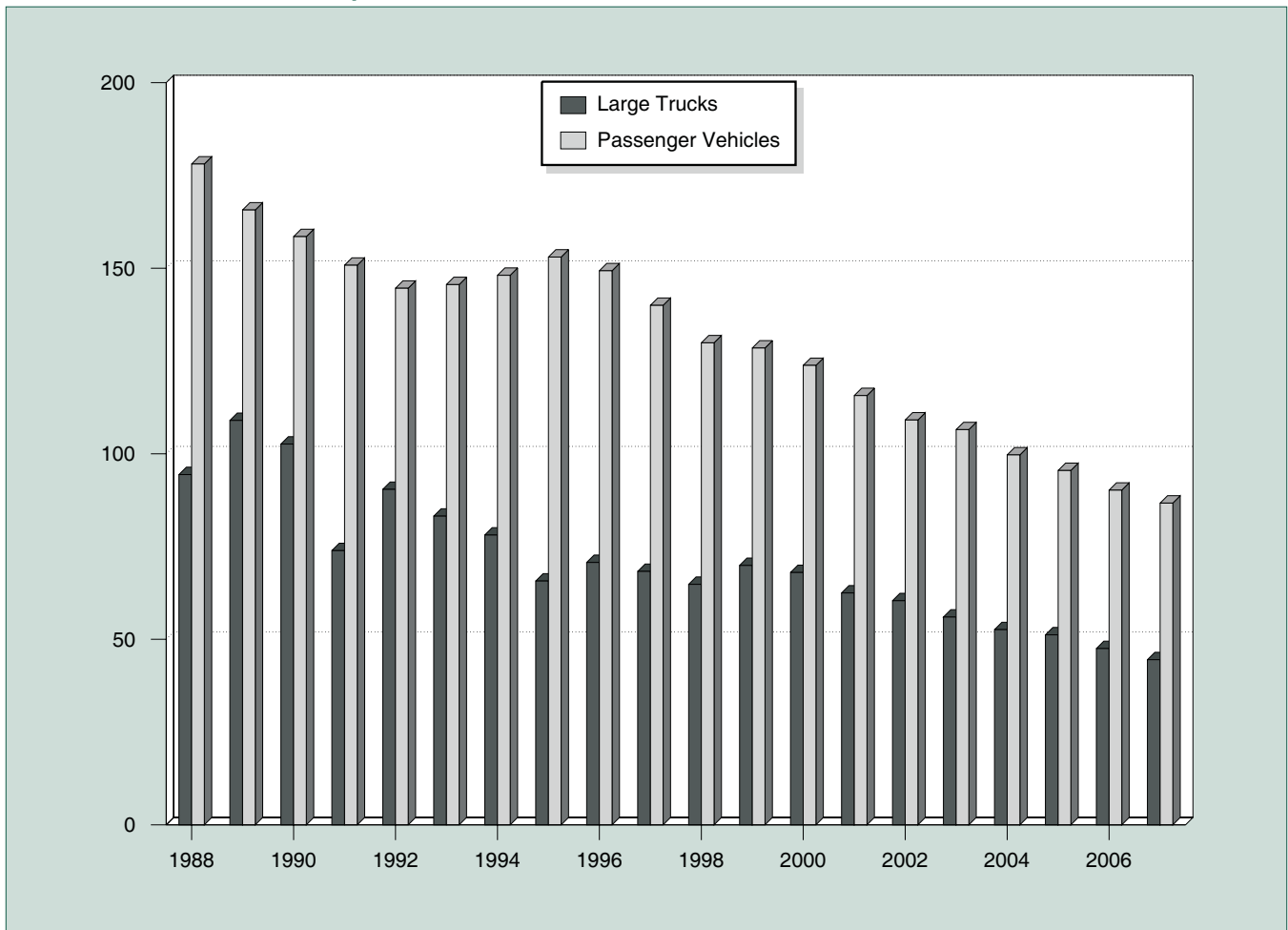
Figure 4. Large Trucks and Passenger Vehicles Involved in Injury Crashes per 100 Million Vehicle Miles Traveled, 1988-2007



Notes: A large truck is defined as a truck with a gross vehicle weight rating (GVWR) greater than 10,000 pounds. A passenger vehicle is defined as a car or light truck (including pickups, vans, and sport utility vehicles).

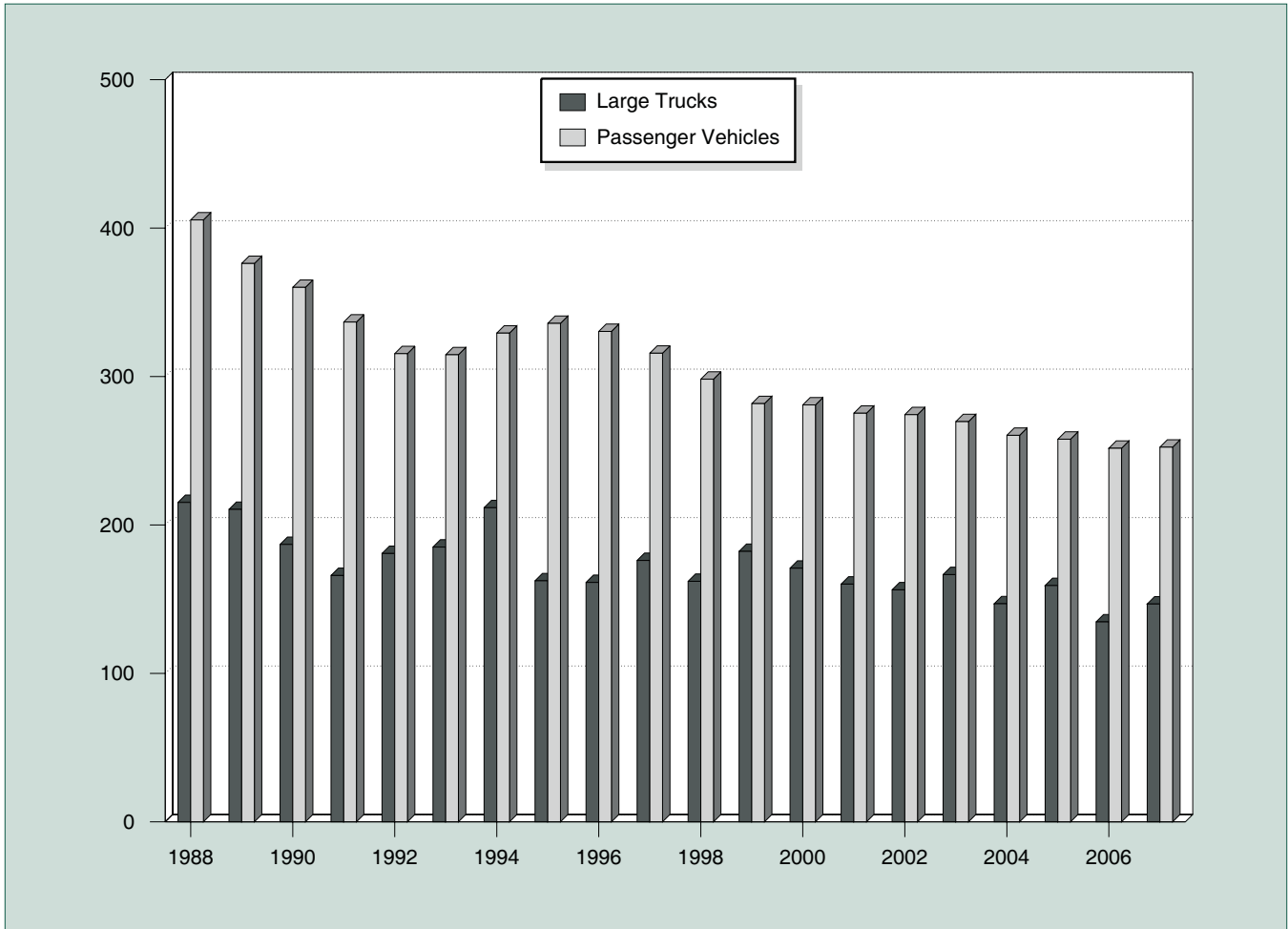
Sources: Vehicle Miles of Travel: Federal Highway Administration. Injury Crashes and Vehicles Involved: National Highway Traffic Safety Administration, General Estimates System (GES).

Figure 5. Persons Injured in Large Truck and Passenger Vehicle Crashes per 100 Million Vehicle Miles Traveled, 1988-2007



Notes: "Persons Injured" includes all nonfatally injured persons in injury and fatal crashes. A large truck is defined as a truck with a gross vehicle weight rating (GVWR) greater than 10,000 pounds. A passenger vehicle is defined as a car or light truck (including pickups, vans, and sport utility vehicles).
 Sources: Vehicle Miles of Travel: Federal Highway Administration. Injury Crashes and Vehicles Involved: National Highway Traffic Safety Administration, General Estimates System (GES).

Figure 6. Large Trucks and Passenger Vehicles Involved in Property Damage Only Crashes per 100 Million Vehicle Miles Traveled, 1988-2007



Notes: A large truck is defined as a truck with a gross vehicle weight rating (GVWR) greater than 10,000 pounds. A passenger vehicle is defined as a car or light truck (including pickups, vans, and sport utility vehicles).
 Sources: Vehicle Miles of Travel: Federal Highway Administration. PDO Crashes and Vehicles Involved: National Highway Traffic Safety Administration, General Estimates System (GES).

Table 8. All Motor Vehicle Injury Crash Statistics, 1988-2007

Year	Injury Crashes	Vehicles Involved	Persons Injured	Million Vehicle Miles Traveled	Injury Crashes per 100 Million Vehicle Miles Traveled	Vehicles Involved in Injury Crashes per 100 Million Vehicle Miles Traveled	Persons Injured per 100 Million Vehicle Miles Traveled	Motor Vehicles Registered
1988	2,233,000	3,973,000	3,416,000	2,025,962	110.2	196.1	168.6	177,455,476
1989	2,153,000	3,826,000	3,284,000	2,096,487	102.7	182.5	156.6	181,164,568
1990	2,122,000	3,775,000	3,231,000	2,144,362	99.0	176.0	150.7	184,275,422
1991	2,008,000	3,581,000	3,097,000	2,172,050	92.4	164.9	142.6	186,370,190
1992	1,991,000	3,587,000	3,070,000	2,247,151	88.6	159.6	136.6	184,937,848
1993	2,022,000	3,647,000	3,149,000	2,296,378	88.0	158.8	137.1	188,349,676
1994	2,123,000	3,865,000	3,266,000	2,357,588	90.1	163.9	138.5	192,497,438
1995	2,217,000	4,094,000	3,465,000	2,422,696	91.5	169.0	143.0	197,064,868
1996	2,238,000	4,120,000	3,468,000	2,485,848	90.0	165.7	139.5	201,630,659
1997	2,149,000	3,966,000	3,348,000	2,561,695	83.9	154.8	130.7	203,567,637
1998	2,029,000	3,757,000	3,192,000	2,631,522	77.1	142.8	121.3	208,076,469
1999	2,054,000	3,773,000	3,236,000	2,691,056	76.3	140.2	120.3	212,685,157
2000	2,070,000	3,783,000	3,189,000	2,746,925	75.4	137.7	116.1	217,028,324
2001	2,003,000	3,663,000	3,033,000	2,797,287	71.6	131.0	108.4	221,230,149
2002	1,929,000	3,520,000	2,926,000	2,855,756	67.5	123.2	102.5	225,684,815
2003	1,925,000	3,536,000	2,889,000	2,890,450	66.6	122.3	99.9	230,633,079
2004	1,862,000	3,415,000	2,788,000	2,964,788	62.8	115.2	94.0	243,010,550
2005	1,816,000	3,287,000	2,699,000	2,989,430	60.8	110.0	90.3	247,421,120
2006	1,746,000	3,181,000	2,575,000	3,014,371	57.9	105.5	85.4	250,844,644
2007	1,711,000	3,064,000	2,491,000	3,029,822	56.5	101.1	82.2	254,403,081

Note: "Persons Injured" includes all nonfatally injured persons in injury and fatal crashes.

Sources: Vehicle Miles of Travel: Federal Highway Administration. Registered Vehicles: Federal Highway Administration and R.L. Polk & Co. Injury Crashes, Vehicles Involved, and Injuries: National Highway Traffic Safety Administration, General Estimates System (GES).

Table 9. All Motor Vehicle Property Damage Only (PDO) Crash Statistics, 1988-2007

Year	PDO Crashes	Vehicles Involved	Million Vehicle Miles Traveled	PDO Crashes per 100 Million Vehicle Miles Traveled	Vehicles Involved in PDO Crashes per 100 Million Vehicle Miles Traveled	Motor Vehicles Registered
1988	4,611,000	7,985,000	2,025,962	227.6	394.2	177,455,476
1989	4,459,000	7,678,000	2,096,487	212.7	366.2	181,164,568
1990	4,309,000	7,493,000	2,144,362	201.0	349.4	184,275,422
1991	4,073,000	7,086,000	2,172,050	187.5	326.2	186,370,190
1992	3,974,000	6,906,000	2,247,151	176.9	307.3	184,937,848
1993	4,048,000	7,040,000	2,296,378	176.3	306.6	188,349,676
1994	4,336,000	7,576,000	2,357,588	183.9	321.3	192,497,438
1995	4,446,000	7,844,000	2,422,696	183.5	323.8	197,064,868
1996	4,494,000	7,918,000	2,485,848	180.8	318.5	201,630,659
1997	4,438,000	7,830,000	2,561,695	173.2	305.6	203,567,637
1998	4,269,000	7,587,000	2,631,522	162.2	288.3	208,076,469
1999	4,188,000	7,402,000	2,691,056	155.6	275.1	212,685,157
2000	4,286,000	7,510,000	2,746,925	156.0	273.4	217,028,324
2001	4,282,000	7,480,000	2,797,287	153.1	267.4	221,230,149
2002	4,348,000	7,608,000	2,855,508	152.3	266.4	225,684,815
2003	4,365,000	7,594,000	2,890,450	151.0	262.7	230,633,079
2004	4,281,000	7,489,000	2,964,788	144.4	252.6	243,010,550
2005	4,304,000	7,511,000	2,989,430	144.0	251.3	247,421,120
2006	4,189,000	7,345,000	3,014,371	139.0	243.7	250,844,644
2007	4,275,000	7,431,000	3,029,822	141.1	245.3	254,403,081

Sources: Vehicle Miles of Travel: Federal Highway Administration. Registered Vehicles: Federal Highway Administration and R.L. Polk & Co. PDO Crashes and Vehicles Involved: National Highway Traffic Safety Administration, General Estimates System (GES).

Table 10. Vehicle Occupants Killed in Large Truck Crashes by Vehicle Type, 1975-2007

Year	Passenger Car	Light Truck	Large Truck		Motorcycle	Bus	Other/ Unknown	Total
			Single-Vehicle Crashes	Multiple-Vehicle Crashes				
1975	2,353	522	643	318	156	8	67	4,067
1976	2,505	619	774	358	164	8	88	4,516
1977	2,903	756	884	403	180	8	73	5,207
1978	3,207	842	929	466	237	15	53	5,749
1979	3,320	976	967	465	248	10	61	6,047
1980	2,880	849	861	401	300	9	46	5,346
1981	2,927	889	785	348	259	11	40	5,259
1982	2,703	819	639	305	216	8	44	4,734
1983	2,859	805	676	306	204	26	47	4,923
1984	2,907	832	755	319	230	20	47	5,110
1985	3,020	881	634	343	243	25	58	5,204
1986	2,958	863	603	323	216	7	44	5,014
1987	2,961	957	571	281	223	15	38	5,046
1988	3,054	960	585	326	175	3	58	5,161
1989	2,913	1,024	550	308	133	28	44	5,000
1990	2,876	987	485	220	158	13	37	4,776
1991	2,535	986	448	213	133	9	42	4,366
1992	2,419	916	396	189	92	2	31	4,045
1993	2,615	1,077	389	216	116	5	42	4,460
1994	2,639	1,197	451	219	133	6	38	4,683
1995	2,546	1,153	425	223	108	9	30	4,494
1996	2,683	1,270	412	209	92	6	36	4,708
1997	2,674	1,426	499	224	85	10	28	4,946
1998	2,556	1,510	486	256	102	7	40	4,957
1999	2,524	1,493	480	279	118	12	33	4,939
2000	2,475	1,487	484	270	111	8	33	4,868
2001	2,269	1,539	474	234	113	13	28	4,670
2002	2,206	1,505	449	240	133	12	30	4,575
2003	2,206	1,515	457	269	151	11	36	4,645
2004	2,240	1,577	469	297	174	14	37	4,808
2005	2,070	1,646	478	326	201	13	41	4,775
2006	2,036	1,536	500	305	193	3	29	4,602
2007	1,848	1,487	502	300	230	7	29	4,403

Notes: A passenger car is defined as a motor vehicle used primarily for carrying passengers, including convertibles, sedans, and station wagons. A light truck is defined as a truck with a gross vehicle weight rating (GVWR) of 10,000 pounds or less, including pickups, vans, truck-based station wagons, and sport utility vehicles. A large truck is defined as a truck with a gross vehicle weight rating (GVWR) greater than 10,000 pounds. A bus is defined as a large motor vehicle used to carry more than 10 passengers, including school buses, inter-city buses, and transit buses.

Source: National Highway Traffic Safety Administration, Fatality Analysis Reporting System (FARS).

Table 11. Nonmotorists and Vehicle Occupants Killed in Large Truck Crashes, 1975-2007

Year	Nonmotorists				Vehicle Occupants	Total
	Pedestrian	Pedalcyclist	Other/Unknown	Total		
1975	333	66	17	416	4,067	4,483
1976	400	79	13	492	4,516	5,008
1977	424	69	23	516	5,207	5,723
1978	516	64	27	607	5,749	6,356
1979	524	90	41	655	6,047	6,702
1980	523	73	29	625	5,346	5,971
1981	462	64	21	547	5,259	5,806
1982	418	61	16	495	4,734	5,229
1983	463	83	22	568	4,923	5,491
1984	425	80	25	530	5,110	5,640
1985	447	64	19	530	5,204	5,734
1986	452	78	35	565	5,014	5,579
1987	427	90	35	552	5,046	5,598
1988	430	59	29	518	5,161	5,679
1989	399	71	20	490	5,000	5,490
1990	414	58	24	496	4,776	5,272
1991	363	75	17	455	4,366	4,821
1992	341	60	16	417	4,045	4,462
1993	303	57	36	396	4,460	4,856
1994	351	86	24	461	4,683	5,144
1995	329	74	21	424	4,494	4,918
1996	331	59	44	434	4,708	5,142
1997	352	75	25	452	4,946	5,398
1998	353	58	27	438	4,957	5,395
1999	344	66	31	441	4,939	5,380
2000	328	63	23	414	4,868	5,282
2001	352	69	20	441	4,670	5,111
2002	278	67	19	364	4,575	4,939
2003	320	52	19	391	4,645	5,036
2004	333	77	17	427	4,808	5,235
2005	346	87	32	465	4,775	5,240
2006	318	78	29	425	4,602	5,027
2007	310	70	25	405	4,403	4,808

Note: A large truck is defined as a truck with a gross vehicle weight rating (GVWR) greater than 10,000 pounds.
 Source: National Highway Traffic Safety Administration, Fatality Analysis Reporting System (FARS).

Table 12. Drivers in Fatal Crashes by Vehicle Type and Blood Alcohol Concentration, 1982-2007

Year	Large Truck			Passenger Car		
	Total Drivers	BAC=0.01+	BAC=0.08+	Total Drivers	BAC=0.01+	BAC=0.08+
1982	4,582	10.2%	6.2%	34,121	41.9%	36.2%
1983	4,790	9.5%	6.7%	33,069	40.3%	35.2%
1984	5,056	9.3%	6.7%	34,395	38.7%	32.9%
1985	5,091	6.8%	5.0%	34,071	35.8%	30.1%
1986	5,015	7.0%	4.8%	35,959	36.4%	30.2%
1987	5,046	4.9%	3.5%	36,371	34.8%	29.2%
1988	5,141	5.5%	3.7%	36,769	33.8%	28.4%
1989	4,903	4.4%	2.8%	35,204	32.2%	27.3%
1990	4,709	4.7%	2.8%	33,893	34.2%	28.9%
1991	4,291	4.4%	2.6%	31,102	31.5%	26.8%
1992	3,980	3.3%	1.9%	29,670	30.4%	25.5%
1993	4,271	3.9%	2.3%	30,060	28.5%	23.8%
1994	4,592	3.2%	2.1%	30,103	28.1%	23.8%
1995	4,410	3.6%	2.3%	30,773	26.9%	22.6%
1996	4,688	3.1%	2.1%	30,451	27.2%	22.7%
1997	4,859	2.7%	1.7%	29,896	25.6%	21.6%
1998	4,905	2.5%	1.5%	28,907	25.6%	21.3%
1999	4,868	2.5%	1.5%	27,878	25.2%	21.3%
2000	4,948	2.8%	1.5%	27,661	28.1%	23.6%
2001	4,779	2.5%	1.2%	27,444	27.0%	22.7%
2002	4,550	2.5%	1.7%	27,236	26.6%	22.4%
2003	4,658	2.1%	1.4%	26,422	26.1%	22.0%
2004	4,837	2.2%	1.1%	25,568	27.0%	22.9%
2005	4,900	2.6%	1.4%	25,046	27.8%	23.5%
2006	4,729	2.0%	1.1%	24,162	27.2%	22.6%
2007	4,551	1.5%	0.9%	22,621	27.1%	22.8%

Year	Light Truck			Motorcycle		
	Total Drivers	BAC=0.01+	BAC=0.08+	Total Drivers	BAC=0.01+	BAC=0.08+
1982	11,199	44.4%	39.2%	4,490	55.4%	46.7%
1983	11,017	43.4%	39.0%	4,288	57.3%	47.8%
1984	11,866	40.6%	35.1%	4,650	54.7%	46.1%
1985	12,372	36.6%	31.9%	4,598	53.3%	43.2%
1986	13,208	38.4%	32.9%	4,558	55.5%	45.9%
1987	14,407	37.0%	31.5%	4,061	51.4%	42.7%
1988	15,167	36.6%	31.5%	3,704	50.6%	41.7%
1989	15,579	34.7%	30.4%	3,182	52.9%	44.6%
1990	15,501	35.9%	31.1%	3,269	52.4%	43.2%
1991	14,702	35.2%	30.5%	2,816	52.1%	43.5%
1992	14,540	48.7%	40.0%	2,435	32.7%	28.4%
1993	15,207	30.8%	26.8%	2,471	45.3%	37.7%
1994	16,235	29.3%	25.2%	2,330	40.9%	33.0%
1995	17,483	28.7%	24.6%	2,262	41.6%	33.0%
1996	18,057	27.7%	24.0%	2,172	43.5%	35.3%
1997	18,502	26.3%	22.6%	2,159	40.8%	32.4%
1998	19,247	26.2%	22.2%	2,333	41.1%	34.4%
1999	19,865	26.4%	22.3%	2,528	40.1%	32.8%
2000	20,393	26.0%	22.2%	2,971	40.0%	31.8%
2001	20,704	26.7%	22.7%	3,261	36.9%	29.2%
2002	21,562	26.8%	23.1%	3,363	38.7%	30.9%
2003	22,172	25.3%	21.5%	3,800	36.3%	29.1%
2004	22,367	25.0%	21.5%	4,116	33.9%	27.1%
2005	22,879	25.2%	21.6%	4,679	34.5%	27.0%
2006	22,307	27.9%	24.0%	4,961	34.1%	26.2%
2007	21,591	27.1%	23.3%	5,286	35.2%	27.1%

Notes: Blood alcohol concentration (BAC) of 0.01 grams per deciliter (g/dL) or above (BAC=0.01+) indicates driver alcohol involvement. BAC of 0.08 g/dL or greater (BAC=0.08+) indicates driver intoxication. A large truck is defined as a truck with a gross vehicle weight rating (GVWR) greater than 10,000 pounds. A passenger car is defined as a motor vehicle used primarily for carrying passengers, including convertibles, sedans, and station wagons. A light truck is defined as a truck with a gross vehicle weight rating (GVWR) of 10,000 pounds or less, including pickups, vans, truck-based station wagons, and sport utility vehicles.

Source: National Highway Traffic Safety Administration, Fatality Analysis Reporting System (FARS).

Table 13. Combination Truck Fatal Crash Statistics, 1975-2007

Year	Fatal Crashes	Vehicles Involved	Occupant Fatalities	Total Fatalities	Million Vehicle Miles Traveled	Fatal Crashes per 100 Million Vehicle Miles Traveled	Vehicles Involved in Fatal Crashes per 100 Million Vehicle Miles Traveled	Fatalities per 100 Million Vehicle Miles Traveled	Combination Trucks Registered
1975	2,825	3,006	696	3,452	46,724	6.05	6.43	7.39	1,130,747
1976	3,260	3,439	838	3,948	49,680	6.56	6.92	7.95	1,224,917
1977	3,613	3,830	932	4,305	55,682	6.49	6.88	7.73	1,239,613
1978	4,066	4,305	1,001	4,825	62,992	6.45	6.83	7.66	1,341,707
1979	4,307	4,574	1,041	5,148	66,992	6.43	6.83	7.68	1,386,374
1980	3,731	3,957	904	4,473	68,678	5.43	5.76	6.51	1,416,869
1981	3,863	4,070	850	4,594	69,134	5.59	5.89	6.65	1,261,202
1982	3,519	3,708	744	4,226	70,765	4.97	5.24	5.97	1,265,321
1983	3,645	3,839	756	4,365	73,586	4.95	5.22	5.93	1,304,041
1984	3,907	4,122	872	4,605	77,377	5.05	5.33	5.95	1,340,144
1985	3,892	4,124	772	4,655	78,063	4.99	5.28	5.96	1,403,266
1986	3,825	4,060	718	4,493	81,038	4.72	5.01	5.54	1,407,783
1987	3,746	3,971	675	4,403	85,495	4.38	4.64	5.15	1,529,824
1988	3,939	4,212	731	4,609	88,551	4.45	4.76	5.20	1,667,327
1989	3,680	3,909	671	4,372	91,879	4.01	4.25	4.76	1,707,182
1990	3,583	3,780	520	4,217	94,341	3.80	4.01	4.47	1,708,895
1991	3,071	3,266	493	3,635	96,645	3.18	3.38	3.76	1,691,331
1992	2,881	3,033	429	3,376	99,510	2.90	3.05	3.39	1,675,363
1993	3,092	3,261	446	3,699	103,116	3.00	3.16	3.59	1,680,305
1994	3,248	3,432	477	3,860	108,932	2.98	3.15	3.54	1,681,500
1995	3,129	3,319	472	3,723	115,451	2.71	2.87	3.22	1,695,751
1996	3,325	3,570	448	3,921	118,899	2.80	3.00	3.30	1,746,586
1997	3,491	3,711	512	4,122	124,584	2.80	2.98	3.31	1,789,968
1998	3,465	3,747	531	4,143	128,359	2.70	2.92	3.23	1,997,345
1999	3,442	3,713	574	4,121	132,384	2.60	2.80	3.11	2,028,562
2000	3,466	3,771	541	4,052	135,020	2.57	2.79	3.00	2,096,619
2001	3,298	3,553	503	3,838	136,584	2.41	2.60	2.81	2,154,174
2002	3,207	3,487	508	3,830	138,737	2.31	2.51	2.76	2,276,661
2003	3,239	3,523	524	3,799	140,160	2.31	2.51	2.71	1,908,365
2004	3,332	3,642	536	3,949	142,370	2.34	2.56	2.77	2,010,335
2005	3,387	3,664	561	3,932	144,028	2.35	2.54	2.73	2,086,759
2006	3,206	3,508	566	3,776	142,169	2.26	2.47	2.66	2,169,670
2007	3,113	3,393	547	3,621	145,008	2.15	2.34	2.50	2,220,995

Note: A combination truck is defined as a truck tractor pulling any number of trailers (including a "bobtail" truck tractor not pulling any trailers) or a straight truck pulling at least one trailer.
 Sources: Vehicle Miles of Travel and Registered Vehicles: Federal Highway Administration. Fatal Crashes, Vehicles Involved, and Fatalities: National Highway Traffic Safety Administration, Fatality Analysis Reporting System (FARS).

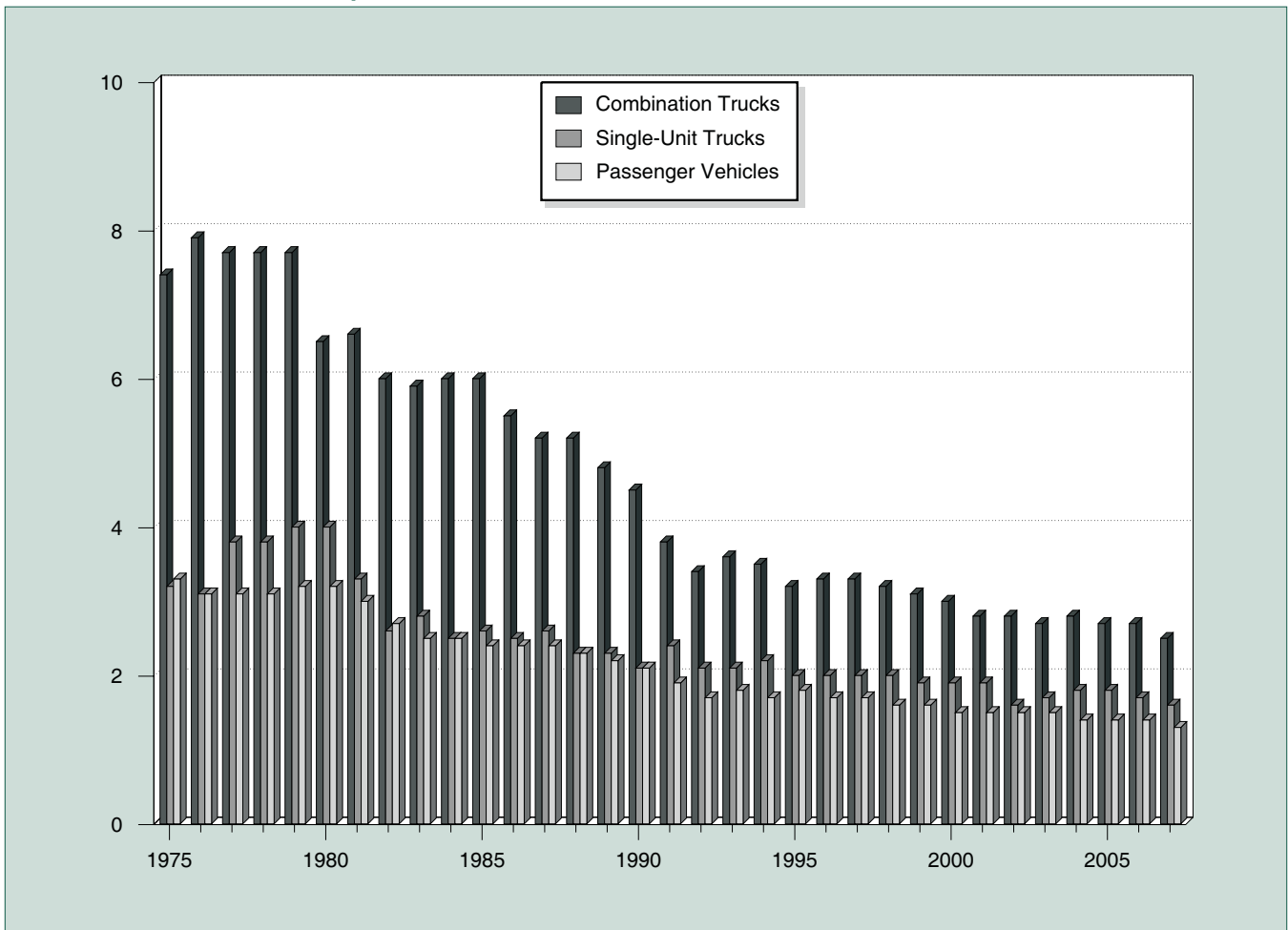
Table 14. Single-Unit Truck Fatal Crash Statistics, 1975-2007

Year	Fatal Crashes	Vehicles Involved	Occupant Fatalities	Total Fatalities	Million Vehicle Miles Traveled	Fatal Crashes per 100 Million Vehicle Miles Traveled	Vehicles Involved in Fatal Crashes per 100 Million Vehicle Miles Traveled	Fatalities per 100 Million Vehicle Miles Traveled	Single-Unit Trucks Registered
1975	948	971	265	1,094	34,606	2.74	2.81	3.16	4,231,622
1976	978	996	294	1,125	36,390	2.69	2.74	3.09	4,350,268
1977	1,306	1,334	355	1,502	39,339	3.32	3.39	3.82	4,450,290
1978	1,419	1,454	394	1,630	42,747	3.32	3.40	3.81	4,518,100
1979	1,472	1,510	391	1,670	42,012	3.50	3.59	3.98	4,505,197
1980	1,388	1,422	358	1,590	39,813	3.49	3.57	3.99	4,373,784
1981	1,130	1,160	283	1,298	39,568	2.86	2.93	3.28	4,455,076
1982	922	938	200	1,056	40,658	2.27	2.31	2.60	4,325,094
1983	1,019	1,038	226	1,182	42,546	2.40	2.44	2.78	4,204,351
1984	986	1,002	202	1,114	44,419	2.22	2.26	2.51	4,060,931
1985	1,016	1,029	205	1,163	45,441	2.24	2.26	2.56	4,593,071
1986	1,018	1,037	208	1,158	45,637	2.23	2.27	2.54	4,313,097
1987	1,118	1,137	177	1,259	48,022	2.33	2.37	2.62	4,188,442
1988	1,014	1,029	180	1,143	49,434	2.05	2.08	2.31	4,469,557
1989	1,056	1,075	187	1,192	50,870	2.08	2.11	2.34	4,519,300
1990	979	996	185	1,106	51,901	1.89	1.92	2.13	4,486,981
1991	1,072	1,081	168	1,251	52,898	2.03	2.04	2.36	4,480,815
1992	987	1,002	156	1,137	53,874	1.83	1.86	2.11	4,369,842
1993	1,054	1,067	159	1,214	56,772	1.86	1.88	2.14	4,407,850
1994	1,188	1,212	193	1,354	61,284	1.94	1.98	2.21	4,906,385
1995	1,133	1,153	176	1,275	62,705	1.81	1.84	2.03	5,023,669
1996	1,160	1,185	173	1,313	64,072	1.81	1.85	2.05	5,266,029
1997	1,194	1,206	211	1,369	66,893	1.78	1.80	2.05	5,293,358
1998	1,185	1,208	211	1,331	68,021	1.74	1.78	1.96	5,734,925
1999	1,193	1,207	185	1,352	70,304	1.70	1.72	1.92	5,762,864
2000	1,199	1,224	213	1,350	70,500	1.70	1.74	1.91	5,926,030
2001	1,247	1,270	205	1,382	72,448	1.72	1.75	1.91	5,703,501
2002	1,089	1,100	181	1,210	75,866	1.44	1.45	1.59	5,650,619
2003	1,174	1,198	202	1,330	77,757	1.51	1.54	1.71	5,848,523
2004	1,228	1,258	230	1,390	78,441	1.57	1.60	1.77	6,161,028
2005	1,243	1,274	240	1,398	78,496	1.58	1.62	1.78	6,395,240
2006	1,219	1,254	239	1,339	80,344	1.52	1.56	1.67	6,649,337
2007	1,157	1,183	253	1,297	81,954	1.41	1.44	1.58	6,806,630

Note: A single-unit truck is defined as a medium or heavy truck in which the engine, cab, drive train, and cargo area are all on one chassis.

Sources: Vehicle Miles of Travel and Registered Vehicles: Federal Highway Administration. Fatal Crashes, Vehicles Involved, and Fatalities: National Highway Traffic Safety Administration, Fatality Analysis Reporting System (FARS).

Figure 7. Fatalities in Combination Truck, Single-Unit Truck, and Passenger Vehicle Crashes per 100 Million Vehicle Miles Traveled, 1975-2007



Notes: A combination truck is defined as a truck tractor pulling any number of trailers (including none) or a straight truck pulling at least one trailer. A single-unit truck is defined as a medium or heavy truck in which the engine, cab, drive train, and cargo area are all on one chassis. A passenger vehicle is defined as a car or light truck (including pickups, vans, and sport utility vehicles).

Sources: Vehicle Miles of Travel: Federal Highway Administration. Fatal Crashes, Vehicles Involved, and Fatalities: National Highway Traffic Safety Administration, Fatality Analysis Reporting System (FARS).

Table 15. Combination Truck Injury Crash Statistics, 1988-2007

Year	Injury Crashes	Vehicles Involved	Persons Injured	Million Vehicle Miles Traveled	Injury Crashes per 100 Million Vehicle Miles Traveled	Vehicles Involved in Injury Crashes per 100 Million Vehicle Miles Traveled	Persons Injured per 100 Million Vehicle Miles Traveled	Combination Trucks Registered
1988	54,000	55,000	76,000	88,551	60.8	62.0	86.2	1,667,327
1989	61,000	64,000	87,000	91,879	66.9	69.4	94.4	1,707,182
1990	59,000	61,000	85,000	94,341	62.1	64.4	90.3	1,708,895
1991	42,000	44,000	63,000	96,645	43.7	45.5	65.2	1,691,331
1992	46,000	47,000	72,000	99,510	46.4	47.5	72.0	1,675,363
1993	54,000	56,000	77,000	103,116	52.7	54.5	74.8	1,680,305
1994	58,000	60,000	82,000	108,932	52.8	55.4	75.5	1,681,500
1995	48,000	50,000	67,000	115,451	41.6	43.5	58.4	1,695,751
1996	55,000	57,000	78,000	118,899	45.9	48.1	65.5	1,746,586
1997	51,000	53,000	72,000	124,584	40.7	42.4	58.1	1,789,968
1998	49,000	51,000	75,000	128,359	37.9	39.4	58.3	1,997,345
1999	54,000	57,000	79,000	132,384	40.5	43.0	59.8	2,028,562
2000	50,000	52,000	73,000	135,020	37.2	38.7	53.9	2,096,619
2001	46,000	49,000	71,000	136,584	34.0	35.6	51.8	2,154,174
2002	48,000	50,000	72,000	138,737	34.8	36.2	51.6	2,276,661
2003	46,000	49,000	65,000	140,160	32.8	34.6	46.7	1,908,365
2004	46,000	47,000	64,000	142,370	32.0	33.3	44.8	2,010,335
2005	43,000	46,000	63,000	144,028	30.0	31.6	43.9	2,086,759
2006	40,000	41,000	56,000	142,169	27.8	29.0	39.2	2,169,670
2007	39,000	41,000	55,000	145,008	26.7	28.0	38.1	2,220,995

Notes: "Persons Injured" includes all nonfatally injured persons in injury and fatal crashes. A combination truck is defined as a truck tractor pulling any number of trailers (including none) or a straight truck pulling at least one trailer.

Sources: Vehicle Miles of Travel and Registered Vehicles: Federal Highway Administration. Injury Crashes, Vehicles Involved, and Injuries: National Highway Traffic Safety Administration, General Estimates System (GES).

Table 16. Combination Truck Property Damage Only (PDO) Crash Statistics, 1988-2007

Year	PDO Crashes	Vehicles Involved	Million Vehicle Miles Traveled	PDO Crashes per 100 Million Vehicle Miles Traveled	Vehicles Involved in PDO Crashes per 100 Million Vehicle Miles Traveled	Combination Trucks Registered
1988	182,000	186,000	88,551	206.0	209.5	1,667,327
1989	180,000	185,000	91,879	195.9	201.7	1,707,182
1990	161,000	166,000	94,341	170.9	175.6	1,708,895
1991	146,000	152,000	96,645	150.8	157.0	1,691,331
1992	129,000	134,000	99,510	129.5	134.3	1,675,363
1993	180,000	186,000	103,116	174.6	180.5	1,680,305
1994	217,000	223,000	108,932	199.4	204.8	1,681,500
1995	174,000	179,000	115,451	150.9	155.2	1,695,751
1996	168,000	173,000	118,899	141.0	145.8	1,746,586
1997	188,000	197,000	124,584	151.0	157.9	1,789,968
1998	170,000	178,000	128,359	132.3	138.9	1,997,345
1999	176,000	184,000	132,384	132.8	138.9	2,028,562
2000	171,000	179,000	135,020	126.8	132.2	2,096,619
2001	159,000	166,000	136,584	116.1	121.6	2,154,174
2002	153,000	159,000	138,737	110.1	114.9	2,276,661
2003	163,000	172,000	140,160	116.2	122.6	1,908,365
2004	161,000	168,000	142,370	113.2	118.0	2,010,335
2005	169,000	177,000	144,028	117.6	123.1	2,086,759
2006	143,000	150,000	142,169	100.4	105.7	2,169,670
2007	155,000	163,000	145,008	107.1	112.5	2,220,995

Note: A combination truck is defined as a truck tractor pulling any number of trailers (including none) or a straight truck pulling at least one trailer.

Sources: Vehicle Miles of Travel and Registered Vehicles: Federal Highway Administration. PDO Crashes and Vehicles Involved: National Highway Traffic Safety Administration, General Estimates System (GES).

Table 17. Single-Unit Truck Injury Crash Statistics, 1988-2007

Year	Injury Crashes	Vehicles Involved	Persons Injured	Million Vehicle Miles Traveled	Injury Crashes per 100 Million Vehicle Miles Traveled	Vehicles Involved in Injury Crashes per 100 Million Vehicle Miles Traveled	Persons Injured per 100 Million Vehicle Miles Traveled	Single-Unit Trucks Registered
1988	41,000	41,000	55,000	49,434	82.3	82.8	111.2	4,469,557
1989	46,000	46,000	70,000	50,870	89.8	91.3	137.9	4,519,300
1990	45,000	46,000	70,000	51,901	86.2	89.4	135.0	4,486,981
1991	33,000	34,000	48,000	52,898	63.0	64.3	91.4	4,480,815
1992	46,000	48,000	69,000	53,874	85.2	88.2	128.5	4,369,842
1993	39,000	40,000	57,000	56,772	69.0	71.0	100.8	4,407,850
1994	34,000	35,000	52,000	61,284	56.1	57.6	85.6	4,906,385
1995	32,000	33,000	51,000	62,705	51.5	53.2	80.9	5,023,669
1996	36,000	37,000	54,000	64,072	56.0	57.3	84.0	5,266,029
1997	42,000	43,000	60,000	66,893	63.2	63.9	89.6	5,293,358
1998	38,000	38,000	54,000	68,021	55.2	56.0	79.4	5,734,925
1999	43,000	44,000	65,000	70,304	60.8	62.2	92.3	5,762,864
2000	48,000	48,000	70,000	70,500	67.5	68.4	98.6	5,926,030
2001	41,000	41,000	62,000	72,448	56.1	56.9	85.6	5,703,501
2002	43,000	44,000	61,000	75,866	57.1	58.0	80.7	5,650,619
2003	40,000	40,000	59,000	77,757	50.9	51.8	76.1	5,848,523
2004	39,000	39,000	54,000	78,441	49.2	50.2	69.0	6,161,028
2005	32,000	34,000	49,000	78,496	41.3	42.8	62.1	6,395,240
2006	38,000	39,000	51,000	80,344	47.6	48.6	63.9	6,649,337
2007	35,000	35,000	48,000	81,954	42.2	42.9	58.1	6,806,630

Notes: "Persons Injured" includes all nonfatally injured persons in injury and fatal crashes. A single-unit truck is defined as a medium or heavy truck in which the engine, cab, drive train, and cargo area are all on one chassis.

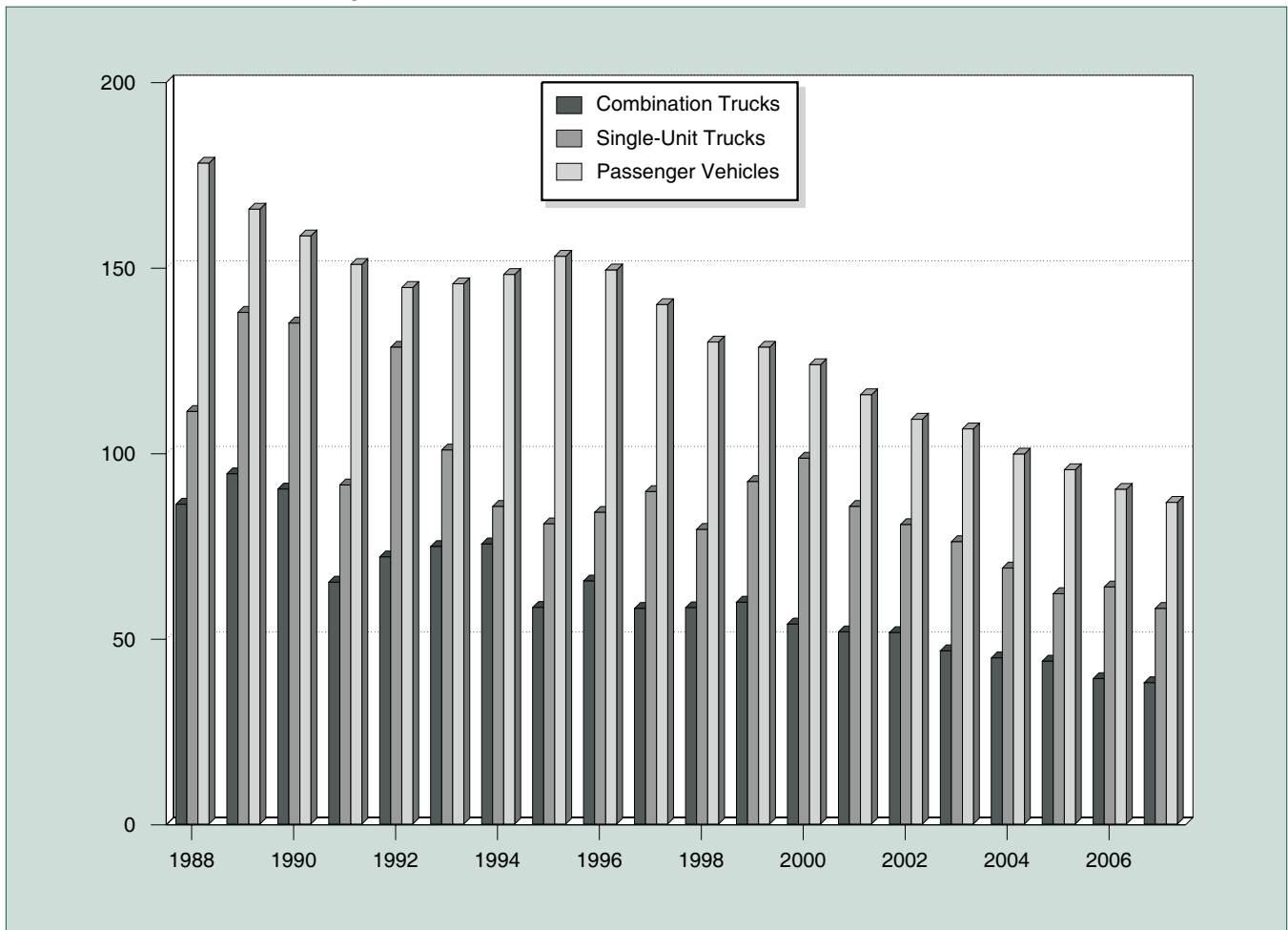
Sources: Vehicle Miles of Travel and Registered Vehicles: Federal Highway Administration. Injury Crashes, Vehicles Involved, and Injuries: National Highway Traffic Safety Administration, General Estimates System (GES).

Table 18. Single-Unit Truck Property Damage Only (PDO) Crash Statistics, 1988-2007

Year	PDO Crashes	Vehicles Involved	Million Vehicle Miles Traveled	PDO Crashes per 100 Million Vehicle Miles Traveled	Vehicles Involved in PDO Crashes per 100 Million Vehicle Miles Traveled	Single-Unit Trucks Registered
1988	110,000	111,000	49,434	222.4	225.5	4,469,557
1989	113,000	115,000	50,870	222.7	226.3	4,519,300
1990	106,000	108,000	51,901	204.0	207.5	4,486,981
1991	96,000	97,000	52,898	181.1	182.5	4,480,815
1992	141,000	144,000	53,874	262.2	266.5	4,369,842
1993	109,000	110,000	56,772	191.3	193.4	4,407,850
1994	135,000	137,000	61,284	220.9	223.6	4,906,385
1995	108,000	110,000	62,705	171.9	175.8	5,023,669
1996	120,000	122,000	64,072	187.7	190.1	5,266,029
1997	140,000	141,000	66,893	208.6	210.1	5,293,358
1998	138,000	140,000	68,021	202.5	205.5	5,734,925
1999	181,000	185,000	70,304	257.3	263.6	5,762,864
2000	171,000	173,000	70,500	242.8	244.9	5,926,030
2001	167,000	169,000	72,448	230.4	233.0	5,703,501
2002	173,000	176,000	75,866	228.0	232.1	5,650,619
2003	189,000	191,000	77,757	242.5	246.0	5,848,523
2004	154,000	156,000	78,441	196.0	199.3	6,161,028
2005	117,000	118,000	78,496	149.0	150.3	6,395,240
2006	147,000	149,000	80,344	182.9	186.0	6,649,337
2007	167,000	170,000	81,954	204.3	207.4	6,806,630

Note: A single-unit truck is defined as a medium or heavy truck in which the engine, cab, drive train, and cargo area are all on one chassis. Sources: Vehicle Miles of Travel and Registered Vehicles: Federal Highway Administration. PDO Crashes and Vehicles Involved: National Highway Traffic Safety Administration, General Estimates System (GES).

Figure 8. Persons Injured in Combination Truck, Single-Unit Truck, and Passenger Vehicle Crashes per 100 Million Vehicle Miles Traveled, 1988-2007



Notes: "Persons Injured" includes all nonfatally injured persons in injury and fatal crashes. A combination truck is defined as a truck tractor pulling any number of trailers (including none) or a straight truck pulling at least one trailer. A single-unit truck is defined as a medium or heavy truck in which the engine, cab, drive train, and cargo area are all on one chassis. A passenger vehicle is defined as a car or light truck (including pickups, vans, and sport utility vehicles).
 Sources: Vehicle Miles of Travel: Federal Highway Administration. Injury Crashes, Vehicles Involved, and Injuries: National Highway Traffic Safety Administration, General Estimates System (GES).

Table 19. Large Truck and Passenger Vehicle Fatal Crashes per 100 Million Vehicle Miles Traveled by Roadway Function Class, 1981-2007

Year	Rural						Urban				Total	
	Interstate		Non-Interstate Principal Arterial		Other		Interstate		Other			
	Large Trucks	Passenger Vehicles	Large Trucks	Passenger Vehicles	Large Trucks	Passenger Vehicles	Large Trucks	Passenger Vehicles	Large Trucks	Passenger Vehicles	Large Trucks	Passenger Vehicles
1981	2.3	1.4	5.3	2.4	7.9	5.3	2.7	1.1	4.5	2.2	4.5	2.7
1982	1.9	1.3	4.5	1.8	8.2	5.2	2.2	0.9	3.8	1.9	4.0	2.3
1983	2.1	1.3	4.1	1.6	8.3	5.0	2.5	0.8	4.0	1.8	4.0	2.2
1984	2.0	1.3	4.1	1.7	8.5	5.2	2.4	0.8	3.9	1.8	4.0	2.2
1985	2.0	1.2	4.1	1.7	8.2	5.0	2.4	0.8	4.0	1.7	4.0	2.1
1986	1.7	1.2	4.1	1.7	7.7	5.3	2.3	0.7	4.1	1.7	3.8	2.1
1987	1.8	1.3	3.7	1.6	7.7	5.3	2.0	0.7	3.9	1.6	3.6	2.1
1988	2.0	1.4	3.3	1.5	7.8	5.3	2.1	0.8	3.6	1.6	3.6	2.0
1989	1.7	1.3	3.2	1.3	7.6	4.9	1.8	0.7	3.3	1.5	3.3	1.9
1990	1.5	1.2	2.8	1.2	7.0	4.8	1.9	0.7	3.3	1.4	3.1	1.8
1991	1.4	1.1	2.6	1.1	5.8	4.4	1.6	0.6	3.0	1.3	2.7	1.7
1992	1.2	1.1	2.5	1.0	5.4	4.2	1.4	0.5	2.6	1.2	2.5	1.5
1993	1.3	1.2	2.5	1.1	5.6	4.4	1.5	0.5	2.6	1.2	2.6	1.5
1994	1.2	1.1	2.8	1.2	5.3	4.3	1.6	0.6	2.5	1.2	2.6	1.5
1995	1.1	1.1	2.5	1.2	4.8	4.4	1.5	0.5	2.5	1.2	2.4	1.6
1996	1.3	1.2	2.7	1.2	5.0	4.2	1.6	0.6	2.3	1.2	2.4	1.5
1997	1.2	1.2	2.7	1.2	5.4	4.1	1.5	0.6	2.3	1.1	2.4	1.5
1998	1.2	1.2	2.7	1.2	5.4	3.9	1.5	0.5	2.1	1.0	2.3	1.4
1999	1.3	1.2	2.6	1.1	5.3	3.8	1.3	0.5	2.0	1.0	2.3	1.4
2000	1.3	1.2	2.3	1.0	5.2	3.7	1.3	0.5	1.9	1.0	2.2	1.4
2001	1.2	1.1	2.3	1.0	4.9	3.7	1.4	0.5	1.9	1.0	2.1	1.3
2002	1.1	1.1	2.0	1.0	4.7	3.8	1.2	0.5	1.8	1.0	2.0	1.3
2003	1.3	1.1	2.3	1.1	4.3	3.7	1.3	0.5	1.7	1.0	2.0	1.3
2004	1.3	1.1	2.3	1.1	4.5	3.8	1.2	0.5	1.7	0.9	2.0	1.2
2005	1.4	1.2	2.1	1.1	4.5	3.8	1.2	0.5	1.9	0.9	2.0	1.3
2006	1.2	1.0	2.3	1.0	4.3	3.7	1.2	0.5	1.8	0.9	2.0	1.2
2007	1.2	0.9	2.1	1.0	4.0	3.5	1.1	0.5	1.6	0.9	1.8	1.2

Notes: A large truck is defined as a truck with a gross vehicle weight rating (GVWR) greater than 10,000 pounds. A passenger vehicle is defined as a car or light truck (including pickups, vans, and sport utility vehicles).

Sources: Vehicle Miles of Travel: Federal Highway Administration. Fatal Crashes: National Highway Traffic Safety Administration, Fatality Analysis Reporting System (FARS).

Table 20. Bus Fatal Crash Statistics, 1975-2007

Year	Fatal Crashes	Vehicles Involved	Occupant Fatalities	Total Fatalities	Million Vehicle Miles Traveled	Fatal Crashes per 100 Million Vehicle Miles Traveled	Vehicles Involved in Fatal Crashes per 100 Million Vehicle Miles Traveled	Fatalities per 100 Million Vehicle Miles Traveled	Buses Registered
1975	323	327	53	348	6,055	5.33	5.40	5.75	462,156
1976	318	319	73	390	6,258	5.08	5.10	6.23	478,339
1977	321	321	42	354	5,823	5.51	5.51	6.08	490,761
1978	370	372	41	412	5,885	6.29	6.32	7.00	505,354
1979	344	347	39	376	5,947	5.78	5.83	6.32	526,765
1980	329	330	46	390	6,059	5.43	5.45	6.44	528,789
1981	340	342	56	393	6,241	5.45	5.48	6.30	543,984
1982	288	289	35	323	5,823	4.95	4.96	5.55	559,200
1983	305	307	53	366	5,199	5.87	5.90	7.04	582,884
1984	319	320	46	374	4,640	6.88	6.90	8.06	583,671
1985	337	337	57	398	4,478	7.53	7.53	8.89	593,485
1986	284	286	39	337	4,717	6.02	6.06	7.14	593,853
1987	353	353	51	409	5,330	6.62	6.62	7.67	602,055
1988	284	287	54	341	5,475	5.19	5.24	6.23	615,669
1989	309	311	50	366	5,670	5.45	5.49	6.46	625,040
1990	286	289	32	340	5,726	4.99	5.05	5.94	626,987
1991	271	274	31	304	5,750	4.71	4.77	5.29	631,279
1992	283	285	28	316	5,778	4.90	4.93	5.47	644,732
1993	262	263	18	286	6,125	4.28	4.29	4.67	654,432
1994	256	258	18	286	6,409	3.99	4.03	4.46	670,423
1995	271	271	33	311	6,420	4.22	4.22	4.84	685,503
1996	324	326	21	367	6,563	4.94	4.97	5.59	694,781
1997	295	297	18	339	6,842	4.31	4.34	4.95	697,548
1998	288	289	38	329	7,007	4.11	4.12	4.70	715,540
1999	313	319	59	373	7,662	4.09	4.16	4.87	728,777
2000	323	325	22	357	7,590	4.26	4.28	4.70	746,125
2001	289	292	34	331	7,077	4.08	4.13	4.68	749,548
2002	274	274	45	331	6,845	4.00	4.00	4.84	760,717
2003	288	291	41	337	6,783	4.25	4.29	4.97	776,550
2004	276	279	42	315	6,801	4.06	4.10	4.63	795,274
2005	278	280	58	340	6,980	3.98	4.01	4.87	807,053
2006	303	305	27	337	6,783	4.47	4.50	4.97	821,959
2007	277	278	37	322	6,976	3.97	3.99	4.62	834,436

Note: A bus is defined as a motor vehicle designed to carry more than 10 passengers, not including the driver.

Sources: Vehicle Miles of Travel and Registered Vehicles: Federal Highway Administration. Fatal Crashes, Vehicles Involved, and Fatalities: National Highway Traffic Safety Administration, Fatality Analysis Reporting System (FARS).

Table 21. Bus Injury Crash Statistics, 1988-2007

Year	Injury Crashes	Vehicles Involved	Persons Injured	Million Vehicle Miles Traveled	Injury Crashes per 100 Million Vehicle Miles Traveled	Vehicles Involved in Injury Crashes per 100 Million Vehicle Miles Traveled	Persons Injured per 100 Million Vehicle Miles Traveled	Buses Registered
1988	15,000	15,000	30,000	5,475	274.8	279.6	556.0	615,669
1989	14,000	14,000	26,000	5,670	241.3	250.2	465.6	625,040
1990	14,000	15,000	43,000	5,726	246.9	256.4	748.0	626,987
1991	15,000	15,000	34,000	5,750	256.5	263.4	583.3	631,279
1992	14,000	14,000	32,000	5,778	247.2	249.8	553.4	644,732
1993	14,000	14,000	29,000	6,125	227.6	229.9	479.5	654,432
1994	14,000	14,000	29,000	6,409	215.7	216.5	449.5	670,423
1995	14,000	14,000	32,000	6,420	224.6	225.0	505.5	685,503
1996	15,000	15,000	33,000	6,563	231.9	232.3	509.3	694,781
1997	12,000	13,000	27,000	6,842	181.8	183.8	399.1	697,548
1998	13,000	13,000	30,000	7,007	181.2	181.9	426.5	715,540
1999	14,000	14,000	36,000	7,662	187.2	188.2	464.6	728,777
2000	13,000	13,000	29,000	7,590	169.7	173.2	388.0	746,125
2001	11,000	12,000	25,000	7,077	162.5	163.1	359.8	749,548
2002	13,000	13,000	30,000	6,845	184.3	184.6	434.1	760,717
2003	14,000	14,000	31,000	6,783	202.3	203.9	453.9	776,550
2004	13,000	13,000	29,000	6,801	188.1	189.3	429.3	795,274
2005	12,000	12,000	23,000	6,980	175.1	175.6	335.9	807,053
2006	11,000	11,000	21,000	6,783	156.7	157.5	310.1	821,959
2007	11,000	11,000	24,000	6,976	152.4	153.3	342.0	834,436

Notes: "Persons Injured" includes all nonfatally injured persons in injury and fatal crashes. A bus is defined as a motor vehicle designed to carry more than 10 passengers, not including the driver.
 Sources: Vehicle Miles of Travel and Registered Vehicles: Federal Highway Administration. Injury Crashes, Vehicles Involved, and Injuries: National Highway Traffic Safety Administration, General Estimates System (GES).

Table 22. Bus Property Damage Only (PDO) Crash Statistics, 1988-2007

Year	PDO Crashes	Vehicles Involved	Million Vehicle Miles Traveled	PDO Crashes per 100 Million Vehicle Miles Traveled	Vehicles Involved in PDO Crashes per 100 Million Vehicle Miles Traveled	Buses Registered
1988	50,000	51,000	5,475	919.9	925.9	615,669
1989	48,000	48,000	5,670	847.6	849.3	625,040
1990	46,000	46,000	5,726	803.1	808.2	626,987
1991	41,000	41,000	5,750	717.6	717.7	631,279
1992	35,000	35,000	5,778	608.1	608.1	644,732
1993	37,000	38,000	6,125	606.6	613.1	654,432
1994	42,000	42,000	6,409	651.3	657.3	670,423
1995	44,000	44,000	6,420	687.8	691.9	685,503
1996	42,000	42,000	6,563	634.5	642.9	694,781
1997	41,000	41,000	6,842	594.0	594.0	697,548
1998	40,000	40,000	7,007	576.6	577.4	715,540
1999	48,000	48,000	7,662	625.6	630.0	728,777
2000	42,000	43,000	7,590	558.5	562.0	746,125
2001	42,000	42,000	7,077	600.2	600.2	749,548
2002	45,000	45,000	6,845	658.5	658.5	760,717
2003	44,000	44,000	6,783	643.8	647.4	776,550
2004	39,000	39,000	6,801	574.6	576.6	795,274
2005	38,000	39,000	6,980	543.4	556.5	807,053
2006	41,000	41,000	6,783	598.9	598.9	821,959
2007	45,000	46,000	6,976	649.1	656.2	834,436

Note: A bus is defined as a motor vehicle designed to carry more than 10 passengers, not including the driver.
 Sources: Vehicle Miles of Travel and Registered Vehicles: Federal Highway Administration. PDO Crashes and Vehicles Involved: National Highway Traffic Safety Administration, General Estimates System (GES).

Table 23. Fatal Crashes Involving Buses by Type of Bus, 1975-2007

Year	School	Cross-Country Intercity	Transit	Unknown	Other	Total
1975	130	29	128	18	19	323
1976	122	30	130	13	23	318
1977	126	33	123	14	25	321
1978	143	53	143	14	18	370
1979	150	37	120	21	16	344
1980	117	38	149	14	11	329
1981	109	48	150	20	13	340
1982	104	39	106	31	11	288
1983	99	41	105	39	22	305
1984	118	48	103	33	17	319
1985	126	29	116	33	33	337
1986	101	33	99	29	23	284
1987	132	29	115	46	31	353
1988	105	31	103	30	18	284
1989	109	32	120	25	25	309
1990	111	26	114	19	17	286
1991	106	39	86	25	16	271
1992	98	35	113	20	17	283
1993	112	28	82	20	20	262
1994	106	22	105	12	12	256
1995	109	23	101	23	15	271
1996	124	35	113	32	20	324
1997	116	36	109	15	19	295
1998	111	38	115	16	8	288
1999	137	35	106	19	17	313
2000	119	40	127	20	17	323
2001	117	38	103	16	15	289
2002	95	35	100	26	18	274
2003	111	26	104	29	18	288
2004	109	35	85	25	22	276
2005	110	37	83	34	14	278
2006	117	32	105	22	27	303
2007	107	35	113	14	8	277

Note: A bus is defined as a motor vehicle designed to carry more than 10 passengers, not including the driver.
Source: National Highway Traffic Safety Administration, Fatality Analysis Reporting System (FARS).

Table 24. Buses in Fatal Crashes by Type of Bus, 1975-2007

Year	School	Cross-Country Intercity	Transit	Unknown	Other	Total
1975	130	29	131	18	19	327
1976	123	30	130	13	23	319
1977	126	33	123	14	25	321
1978	143	54	143	14	18	372
1979	150	37	123	21	16	347
1980	117	38	150	14	11	330
1981	109	48	150	20	14	342
1982	104	37	106	31	11	289
1983	99	41	105	40	22	307
1984	119	48	103	33	17	320
1985	126	29	116	33	33	337
1986	101	33	99	29	24	286
1987	132	29	115	46	31	353
1988	105	31	103	30	18	287
1989	109	32	120	25	25	311
1990	112	27	114	19	17	289
1991	106	39	86	26	17	274
1992	98	36	113	21	17	285
1993	112	28	82	21	20	263
1994	106	23	105	12	12	258
1995	109	23	101	23	15	271
1996	124	35	115	32	20	326
1997	117	37	109	15	19	297
1998	112	38	115	16	8	289
1999	139	38	106	19	17	319
2000	120	40	128	20	17	325
2001	119	38	104	16	15	292
2002	95	35	100	26	18	274
2003	113	26	104	30	18	291
2004	111	35	85	26	22	279
2005	111	38	83	34	14	280
2006	118	33	105	22	27	305
2007	107	35	113	15	8	278

Note: A bus is defined as a motor vehicle designed to carry more than 10 passengers, not including the driver.
 Source: National Highway Traffic Safety Administration, Fatality Analysis Reporting System (FARS).

Table 25. Fatalities in Bus Crashes by Type of Bus, 1975-2007

Year	School	Cross-Country Intercity	Transit	Unknown	Other	Total
1975	138	35	135	20	21	348
1976	147	35	133	49	26	390
1977	143	42	126	16	27	354
1978	163	63	153	14	20	412
1979	160	46	130	21	19	376
1980	136	66	156	17	15	390
1981	120	65	165	26	17	393
1982	106	45	122	39	12	323
1983	126	49	110	57	25	366
1984	144	55	110	46	19	374
1985	153	40	129	42	34	398
1986	110	37	103	57	31	337
1987	149	54	120	51	35	409
1988	142	37	113	34	18	341
1989	145	43	123	28	30	366
1990	128	39	125	25	24	340
1991	120	46	91	31	18	304
1992	105	45	121	22	23	316
1993	119	35	87	22	23	286
1994	116	25	116	14	16	286
1995	123	30	111	30	17	311
1996	144	43	123	34	23	367
1997	131	46	123	17	22	339
1998	118	50	127	25	9	329
1999	153	66	110	21	25	373
2000	133	48	134	20	22	357
2001	130	46	117	22	16	331
2002	110	54	112	33	22	331
2003	120	36	116	40	25	337
2004	116	57	86	32	24	315
2005	120	70	92	41	17	340
2006	138	39	106	23	31	337
2007	128	51	117	17	9	322

Note: A bus is defined as a motor vehicle designed to carry more than 10 passengers, not including the driver.
Source: National Highway Traffic Safety Administration, Fatality Analysis Reporting System (FARS).

Table 26. Bus Occupant Fatalities in Bus Crashes by Type of Bus, 1975-2007

Year	School	Cross-Country Intercity	Transit	Unknown	Other	Total
1975	16	8	21	2	6	53
1976	21	3	8	39	2	73
1977	14	5	14	5	4	42
1978	19	6	8	5	3	41
1979	17	6	8	4	4	39
1980	14	23	6	2	1	46
1981	12	6	23	11	4	56
1982	9	5	11	10	0	35
1983	17	9	4	21	2	53
1984	20	9	9	7	1	46
1985	24	15	4	12	2	57
1986	2	4	4	24	5	39
1987	14	19	3	11	4	51
1988	38	8	2	4	2	54
1989	33	3	1	8	5	50
1990	13	2	3	3	11	32
1991	10	6	3	9	3	31
1992	7	8	3	3	7	28
1993	6	1	5	4	2	18
1994	2	7	6	1	2	18
1995	12	6	1	9	5	33
1996	10	3	5	3	0	21
1997	8	5	3	1	1	18
1998	6	13	2	15	2	38
1999	8	32	6	4	9	59
2000	16	3	1	1	1	22
2001	16	3	4	7	4	34
2002	2	20	6	9	8	45
2003	7	3	12	10	9	41
2004	7	23	2	10	0	42
2005	8	33	3	8	6	58
2006	6	8	1	8	4	27
2007	3	19	6	9	0	37

Note: A bus is defined as a motor vehicle designed to carry more than 10 passengers, not including the driver.
 Source: National Highway Traffic Safety Administration, Fatality Analysis Reporting System (FARS).

Table 27. Large Truck and Bus Fatal Crash Statistics, 1975-2007

Year	Fatal Crashes	Vehicles Involved	Occupant Fatalities	Total Fatalities	Million Vehicle Miles Traveled by All Motor Vehicles	Fatal Crashes per 100 Million Vehicle Miles Traveled	Vehicles Involved in Fatal Crashes per 100 Million Vehicle Miles Traveled	Fatalities per 100 Million Vehicle Miles Traveled	Large Trucks and Buses Registered
1975	4,032	4,304	1,014	4,816	1,327,664	0.304	0.324	0.363	5,824,525
1976	4,489	4,754	1,205	5,379	1,402,380	0.320	0.339	0.384	6,053,524
1977	5,149	5,485	1,329	6,054	1,467,027	0.351	0.374	0.413	6,180,664
1978	5,758	6,131	1,436	6,740	1,544,704	0.373	0.397	0.436	6,365,161
1979	6,007	6,431	1,471	7,054	1,529,133	0.393	0.421	0.461	6,418,336
1980	5,353	5,709	1,308	6,333	1,527,295	0.350	0.374	0.415	6,319,442
1981	5,253	5,572	1,189	6,178	1,555,308	0.338	0.358	0.397	6,260,262
1982	4,668	4,935	979	5,525	1,595,010	0.293	0.309	0.346	6,149,615
1983	4,903	5,184	1,035	5,815	1,652,788	0.297	0.314	0.352	6,091,276
1984	5,136	5,444	1,120	5,983	1,720,269	0.299	0.316	0.348	5,984,746
1985	5,153	5,490	1,034	6,089	1,774,826	0.290	0.309	0.343	6,589,822
1986	5,055	5,383	965	5,895	1,834,872	0.275	0.293	0.321	6,314,733
1987	5,146	5,461	903	5,978	1,921,204	0.268	0.284	0.311	6,320,321
1988	5,156	5,528	965	6,004	2,025,962	0.254	0.273	0.296	6,752,553
1989	4,971	5,295	908	5,819	2,096,487	0.237	0.253	0.278	6,851,522
1990	4,790	5,065	737	5,590	2,144,362	0.223	0.236	0.261	6,822,863
1991	4,355	4,621	692	5,107	2,172,050	0.201	0.213	0.235	6,803,425
1992	4,098	4,320	613	4,767	2,247,151	0.182	0.192	0.212	6,689,937
1993	4,351	4,591	623	5,124	2,296,378	0.189	0.200	0.223	6,742,587
1994	4,617	4,902	688	5,412	2,357,588	0.196	0.208	0.230	7,258,308
1995	4,456	4,743	681	5,214	2,422,696	0.184	0.196	0.215	7,404,924
1996	4,723	5,081	642	5,489	2,485,848	0.190	0.204	0.221	7,707,396
1997	4,888	5,214	741	5,709	2,561,695	0.191	0.204	0.223	7,780,874
1998	4,857	5,244	780	5,712	2,631,522	0.185	0.199	0.217	8,447,810
1999	4,854	5,239	818	5,727	2,691,056	0.180	0.195	0.213	8,520,203
2000	4,881	5,320	776	5,620	2,746,925	0.178	0.194	0.205	8,768,774
2001	4,723	5,115	742	5,417	2,797,287	0.169	0.183	0.194	8,607,223
2002	4,486	4,861	734	5,241	2,855,508	0.157	0.170	0.184	8,687,997
2003	4,609	5,012	767	5,343	2,890,450	0.159	0.173	0.185	8,533,438
2004	4,734	5,181	808	5,519	2,964,788	0.160	0.175	0.186	8,966,638
2005	4,805	5,231	862	5,539	2,989,430	0.161	0.175	0.185	9,289,052
2006	4,643	5,071	832	5,347	3,014,371	0.154	0.168	0.177	9,640,966
2007	4,455	4,862	839	5,099	3,029,822	0.147	0.160	0.168	9,862,060

Note: A large truck is defined as a truck with a gross vehicle weight rating (GVWR) greater than 10,000 pounds. A bus is defined as a motor vehicle designed to carry more than 10 passengers, not including the driver. Rates are calculated on the basis of vehicle miles traveled by all motor vehicles (large trucks, buses, passenger vehicles, and motorcycles).

Sources: Vehicle Miles of Travel and Registered Vehicles: Federal Highway Administration. Fatal Crashes, Vehicles Involved, and Fatalities: National Highway Traffic Safety Administration, Fatality Analysis Reporting System (FARS).

Table 28. Large Truck and Bus Injury Crash Statistics, 1988-2007

Year	Injury Crashes	Vehicles Involved	Persons Injured	Million Vehicle Miles Traveled by All Motor Vehicles	Injury Crashes per 100 Million Vehicle Miles Traveled	Vehicles Involved in Injury Crashes per 100 Million Vehicle Miles Traveled	Persons Injured per 100 Million Vehicle Miles Traveled	Large Trucks and Buses Registered
1988	73,000	111,000	159,000	2,025,962	3.62	5.49	7.86	6,752,553
1989	94,000	122,000	181,000	2,096,487	4.49	5.93	8.62	6,851,521
1990	87,000	122,000	191,000	2,144,362	4.03	5.68	8.90	6,822,863
1991	67,000	93,000	143,000	2,172,050	3.10	4.29	6.56	6,803,425
1992	104,000	109,000	169,000	2,247,151	4.64	4.86	7.50	6,689,937
1993	106,000	111,000	160,000	2,296,378	4.62	4.82	6.99	6,742,587
1994	104,000	110,000	160,000	2,357,588	4.41	4.64	6.81	7,258,307
1995	94,000	98,000	148,000	2,422,696	3.87	4.05	6.10	7,404,923
1996	104,000	109,000	163,000	2,485,848	4.17	4.39	6.54	7,707,396
1997	104,000	108,000	157,000	2,561,695	4.06	4.22	6.12	7,780,874
1998	98,000	101,000	156,000	2,631,522	3.71	3.85	5.91	8,447,810
1999	109,000	115,000	176,000	2,691,056	4.04	4.28	6.53	8,520,203
2000	108,000	114,000	166,000	2,746,925	3.94	4.14	6.04	8,768,774
2001	96,000	101,000	153,000	2,797,287	3.45	3.62	5.48	8,607,223
2002	102,000	107,000	158,000	2,855,756	3.56	3.74	5.52	8,687,997
2003	97,000	103,000	150,000	2,890,450	3.37	3.55	5.21	8,533,438
2004	95,000	100,000	145,000	2,964,788	3.22	3.36	4.88	8,966,638
2005	89,000	95,000	136,000	2,989,430	2.98	3.17	4.56	9,289,052
2006	87,000	91,000	126,000	3,014,371	2.88	3.02	4.17	9,640,966
2007	82,000	86,000	124,000	3,029,822	2.72	2.85	4.09	9,862,060

Notes: "Persons Injured" includes all nonfatally injured persons in injury and fatal crashes. A large truck is defined as a truck with a gross vehicle weight rating (GVWR) greater than 10,000 pounds. A bus is defined as a motor vehicle designed to carry more than 10 passengers, not including the driver. Rates are calculated on the basis of vehicle miles traveled by all motor vehicles (large trucks, buses, passenger vehicles, and motorcycles).

Sources: Vehicle Miles of Travel and Registered Vehicles: Federal Highway Administration. Injury Crashes, Vehicles Involved, and Injuries: National Highway Traffic Safety Administration, General Estimates System (GES).

Table 29. Large Truck and Bus Property Damage Only (PDO) Crash Statistics, 1988-2007

Year	PDO Crashes	Vehicles Involved	Million Vehicle Miles Traveled by All Motor Vehicles	PDO Crashes per 100 Million Vehicle Miles Traveled	Vehicles Involved in PDO Crashes per 100 Million Vehicle Miles Traveled	Large Trucks and Buses Registered
1988	238,000	348,000	2,025,962	11.7	17.2	6,752,553
1989	264,000	349,000	2,096,487	12.6	16.6	6,851,521
1990	239,000	320,000	2,144,362	11.1	14.9	6,822,863
1991	218,000	290,000	2,172,050	10.0	13.3	6,803,425
1992	303,000	312,000	2,247,151	13.5	13.9	6,689,937
1993	321,000	333,000	2,296,378	14.0	14.5	6,742,587
1994	390,000	402,000	2,357,588	16.6	17.1	7,258,307
1995	322,000	334,000	2,422,696	13.3	13.8	7,404,923
1996	325,000	337,000	2,485,848	13.1	13.6	7,707,396
1997	363,000	378,000	2,561,695	14.2	14.7	7,780,874
1998	341,000	359,000	2,631,522	13.0	13.6	8,447,810
1999	396,000	417,000	2,691,056	14.7	15.5	8,520,203
2000	378,000	394,000	2,746,925	13.8	14.3	8,768,774
2001	360,000	377,000	2,797,287	12.9	13.5	8,607,223
2002	366,000	381,000	2,855,508	12.8	13.3	8,687,997
2003	389,000	407,000	2,890,450	13.5	14.1	8,533,438
2004	349,000	364,000	2,964,788	11.8	12.3	8,966,638
2005	377,000	393,000	2,989,430	12.6	13.1	9,289,052
2006	324,000	340,000	3,014,371	10.7	11.3	9,640,966
2007	360,000	379,000	3,029,822	11.9	12.5	9,862,060

Note: A large truck is defined as a truck with a gross vehicle weight rating (GVWR) greater than 10,000 pounds. A bus is defined as a motor vehicle designed to carry more than 10 passengers, not including the driver. Rates are calculated on the basis of vehicle miles traveled by all motor vehicles (large trucks, buses, passenger vehicles, and motorcycles).

Sources: Vehicle Miles of Travel and Registered Vehicles: Federal Highway Administration. PDO Crashes and Vehicles Involved: National Highway Traffic Safety Administration, General Estimates System (GES).

Table 30. Fatalities in Crashes Involving Large Trucks by State, 1997-2007

State	1997	1998	1999	2000	2001	2002	2003	2004	2005	2006	2007
Alabama	172	158	161	159	145	128	147	164	122	137	134
Alaska	7	2	5	4	10	8	5	14	5	4	5
Arizona	73	125	108	105	85	104	119	106	118	136	97
Arkansas	135	109	96	118	98	98	109	110	115	91	114
California	409	378	363	374	378	362	370	415	429	394	363
Colorado	80	61	71	68	95	53	77	69	68	67	82
Connecticut	25	28	21	34	29	18	24	25	21	29	27
Delaware	17	17	11	20	15	17	19	19	7	17	6
District of Columbia	4	1	2	2	1	0	0	5	3	2	2
Florida	308	352	349	310	365	376	365	377	400	350	302
Georgia	254	223	248	219	255	198	232	248	229	232	229
Hawaii	3	3	3	2	8	4	4	4	9	12	3
Idaho	34	28	31	26	34	32	40	29	34	29	27
Illinois	166	184	211	173	200	156	194	158	191	159	154
Indiana	158	181	205	163	135	131	156	157	138	140	146
Iowa	89	92	112	90	83	68	77	70	73	75	71
Kansas	96	86	96	81	80	79	71	94	80	69	77
Kentucky	115	112	94	101	107	122	119	124	124	105	104
Louisiana	132	157	131	126	123	114	130	105	122	104	121
Maine	23	23	25	30	28	22	14	21	19	21	21
Maryland	84	63	54	63	78	63	62	83	60	61	69
Massachusetts	39	35	37	51	30	24	35	43	24	34	28
Michigan	150	159	139	156	122	135	117	118	111	116	123
Minnesota	102	87	91	89	64	86	68	74	70	62	84
Mississippi	106	130	118	123	98	83	72	101	91	90	75
Missouri	158	183	178	183	139	154	167	158	166	155	136
Montana	27	21	19	26	27	26	27	16	23	34	31
Nebraska	53	43	59	56	68	59	56	49	48	34	43
Nevada	31	38	44	37	46	32	32	29	53	51	29
New Hampshire	12	10	11	10	14	15	13	15	11	7	12
New Jersey	92	72	60	94	77	72	75	86	98	74	64
New Mexico	53	46	66	52	59	61	50	63	63	80	57
New York	161	143	177	157	139	132	158	140	145	174	156
North Carolina	231	247	201	191	201	169	162	200	204	152	168
North Dakota	12	11	25	10	12	19	16	15	17	19	12
Ohio	220	200	215	189	168	203	151	190	177	158	134
Oklahoma	105	134	103	112	94	130	102	114	121	140	110
Oregon	80	74	49	52	64	55	65	53	66	62	53
Pennsylvania	196	181	227	184	185	174	224	189	183	193	194
Rhode Island	2	3	9	1	6	5	6	5	1	8	7
South Carolina	90	128	118	133	108	101	99	110	124	95	91
South Dakota	20	15	23	22	21	19	17	18	13	19	14
Tennessee	145	125	185	163	138	150	118	155	163	148	149
Texas	455	479	434	513	486	467	487	483	506	500	493
Utah	57	54	43	39	34	44	21	31	32	39	39
Vermont	18	9	11	9	7	10	10	15	9	11	5
Virginia	130	131	107	115	110	100	120	99	112	107	111
Washington	89	72	63	72	63	55	46	57	69	65	79
West Virginia	60	42	65	57	48	65	57	64	55	48	48
Wisconsin	95	107	81	97	108	109	101	107	87	76	85
Wyoming	25	33	25	21	23	32	30	41	31	42	24
U.S. Total	5,398	5,395	5,380	5,282	5,111	4,939	5,036	5,235	5,240	5,027	4,808

Note: A large truck is defined as a truck with a gross vehicle weight rating (GVWR) greater than 10,000 pounds.
 Source: National Highway Traffic Safety Administration, Fatality Analysis Reporting System (FARS).

Table 31. Fatal Crashes Involving Large Trucks by State, 1997-2007

State	1997	1998	1999	2000	2001	2002	2003	2004	2005	2006	2007
Alabama	155	136	136	143	128	112	130	132	107	118	120
Alaska	7	1	5	4	10	4	5	13	4	4	5
Arizona	67	93	94	91	74	84	95	88	99	112	87
Arkansas	101	93	86	100	88	75	93	89	106	84	97
California	338	319	304	331	334	313	311	359	357	358	325
Colorado	73	46	60	60	75	47	58	60	62	60	67
Connecticut	22	28	19	31	26	17	23	25	18	26	21
Delaware	14	16	9	19	11	16	15	18	7	17	6
District of Columbia	3	1	2	2	1	0	0	5	3	2	2
Florida	265	297	294	279	303	320	314	322	341	309	260
Georgia	208	189	204	189	216	169	201	214	211	208	197
Hawaii	3	3	3	2	8	4	4	4	4	7	3
Idaho	28	23	25	25	30	28	37	28	27	24	24
Illinois	155	165	178	152	172	142	162	139	171	136	137
Indiana	143	156	167	138	120	110	142	139	125	120	124
Iowa	74	77	92	78	70	61	56	58	61	66	62
Kansas	78	72	78	70	73	70	62	76	67	61	69
Kentucky	100	94	86	85	91	104	108	110	108	93	95
Louisiana	118	128	111	108	111	95	107	94	107	90	104
Maine	21	21	23	24	23	21	13	18	17	18	19
Maryland	78	57	53	58	70	58	55	67	56	56	59
Massachusetts	37	31	35	45	27	22	34	39	22	32	26
Michigan	124	139	126	137	115	120	104	110	100	106	108
Minnesota	87	75	83	73	59	75	61	65	59	59	65
Mississippi	91	102	104	107	84	71	61	81	77	74	67
Missouri	133	145	144	145	118	137	140	132	142	120	120
Montana	24	18	15	24	25	20	21	14	22	25	29
Nebraska	46	39	52	48	55	47	46	39	39	27	37
Nevada	26	32	38	33	41	29	32	25	44	37	25
New Hampshire	12	10	9	10	13	14	12	13	11	7	10
New Jersey	79	66	56	79	71	63	69	82	93	67	60
New Mexico	45	40	43	42	45	45	37	52	50	62	53
New York	141	128	153	147	128	123	139	121	127	155	138
North Carolina	181	213	179	164	176	152	148	174	182	136	143
North Dakota	11	7	18	9	11	16	14	14	10	14	12
Ohio	185	174	183	166	156	182	134	160	158	141	116
Oklahoma	89	99	80	97	77	97	90	92	103	117	85
Oregon	68	65	41	51	52	44	49	46	59	47	46
Pennsylvania	181	162	187	164	159	157	188	165	170	169	179
Rhode Island	2	3	9	1	5	5	6	5	1	8	6
South Carolina	82	109	105	108	99	83	89	97	110	80	78
South Dakota	15	14	18	18	20	16	14	17	13	17	14
Tennessee	126	113	149	145	117	124	103	128	134	129	129
Texas	384	401	367	412	422	391	419	396	429	409	421
Utah	45	45	39	38	31	34	17	26	26	32	34
Vermont	14	9	8	8	6	10	10	12	8	10	4
Virginia	115	112	94	99	95	82	107	90	102	96	98
Washington	73	63	55	59	55	52	38	50	55	62	69
West Virginia	49	38	48	46	44	55	51	56	48	43	41
Wisconsin	77	86	72	91	91	85	86	90	76	70	74
Wyoming	21	26	21	18	20	23	25	29	23	30	20
U.S. Total	4,614	4,579	4,560	4,573	4,451	4,224	4,335	4,478	4,551	4,350	4,190

Note: A large truck is defined as a truck with a gross vehicle weight rating (GVWR) greater than 10,000 pounds.

Source: National Highway Traffic Safety Administration, Fatality Analysis Reporting System (FARS).

Table 32. Large Trucks Involved in Fatal Crashes by State, 1997-2007

State	1997	1998	1999	2000	2001	2002	2003	2004	2005	2006	2007
Alabama	167	149	144	153	144	123	148	135	118	126	127
Alaska	7	1	5	4	10	4	5	13	4	4	6
Arizona	72	98	108	100	79	88	102	102	107	129	94
Arkansas	113	105	92	109	102	78	101	93	129	97	110
California	369	365	319	362	365	346	333	381	377	384	361
Colorado	75	52	60	65	85	51	61	64	65	73	77
Connecticut	23	29	22	36	28	17	24	27	19	28	24
Delaware	16	18	10	21	11	17	15	19	7	18	6
District of Columbia	3	1	2	2	1	0	0	5	3	2	2
Florida	284	313	327	302	335	351	343	359	383	336	288
Georgia	218	197	220	208	230	203	208	233	240	227	212
Hawaii	3	4	3	2	8	4	4	4	4	7	3
Idaho	30	23	25	26	32	30	38	29	31	24	26
Illinois	166	186	193	163	180	159	178	151	196	158	148
Indiana	160	180	191	167	133	120	166	166	137	137	142
Iowa	75	81	99	84	76	67	62	60	65	73	70
Kansas	81	78	82	79	78	75	73	85	72	64	74
Kentucky	108	99	94	97	95	114	117	123	117	104	103
Louisiana	124	142	120	113	126	103	117	103	121	97	115
Maine	21	21	25	24	27	21	14	18	18	18	20
Maryland	88	66	57	67	76	61	63	76	57	60	63
Massachusetts	38	38	35	46	27	22	34	42	24	33	26
Michigan	127	146	132	147	123	123	110	121	106	113	114
Minnesota	88	79	86	77	60	78	62	67	61	60	72
Mississippi	99	108	111	118	85	72	67	84	80	81	70
Missouri	139	155	155	165	129	151	153	145	152	130	138
Montana	24	18	15	24	27	22	21	15	22	26	29
Nebraska	46	40	58	52	61	59	52	41	46	28	44
Nevada	27	34	41	36	44	33	36	28	48	43	25
New Hampshire	12	10	9	10	14	15	13	13	11	7	10
New Jersey	80	71	59	88	76	69	85	94	106	75	70
New Mexico	51	44	48	45	47	57	39	58	57	67	60
New York	144	130	159	153	134	131	147	128	137	163	146
North Carolina	195	232	190	173	186	166	160	184	193	148	151
North Dakota	12	8	18	11	11	18	14	14	10	17	13
Ohio	203	187	201	189	163	189	147	179	174	152	124
Oklahoma	97	105	82	107	84	108	104	97	111	134	94
Oregon	77	67	48	59	52	45	52	47	60	50	52
Pennsylvania	193	178	207	177	181	174	213	209	188	183	214
Rhode Island	2	3	9	1	5	5	6	5	1	9	6
South Carolina	89	118	124	120	106	91	96	102	119	90	80
South Dakota	15	14	18	22	22	16	14	17	15	17	14
Tennessee	130	133	168	157	129	130	113	141	150	144	146
Texas	411	425	385	447	460	414	448	436	457	450	455
Utah	47	49	41	39	33	38	18	26	28	32	36
Vermont	15	10	8	8	6	10	12	12	10	10	4
Virginia	120	115	107	112	115	89	122	97	106	105	105
Washington	77	70	59	64	56	53	39	52	58	68	71
West Virginia	52	40	50	48	48	57	55	61	49	45	45
Wisconsin	80	90	74	98	95	93	89	94	78	72	78
Wyoming	24	30	25	18	23	27	28	47	24	48	21
U.S. Total	4,917	4,955	4,920	4,995	4,823	4,587	4,721	4,902	4,951	4,766	4,584

Note: A large truck is defined as a truck with a gross vehicle weight rating (GVWR) greater than 10,000 pounds.
 Source: National Highway Traffic Safety Administration, Fatality Analysis Reporting System (FARS).

Table 33. Single-Vehicle Fatal Crashes Involving Large Trucks by State, 1997-2007

State	1997	1998	1999	2000	2001	2002	2003	2004	2005	2006	2007
Alabama	23	22	23	25	19	17	16	18	10	17	17
Alaska	4	0	0	2	3	0	2	5	1	1	3
Arizona	14	22	13	21	17	16	16	19	15	22	21
Arkansas	17	18	13	28	19	18	18	16	22	20	24
California	94	69	82	74	83	67	59	71	70	72	73
Colorado	18	12	12	11	12	9	8	8	17	13	18
Connecticut	7	10	3	6	7	4	7	7	2	3	5
Delaware	3	3	2	1	2	2	0	2	3	2	0
District of Columbia	0	0	1	1	0	0	0	3	2	1	2
Florida	50	46	35	45	48	52	56	49	58	54	50
Georgia	23	25	32	32	38	26	39	39	30	34	33
Hawaii	2	0	0	0	5	2	2	0	0	1	0
Idaho	6	4	5	4	6	5	8	6	6	1	6
Illinois	37	19	27	23	34	26	22	20	35	23	22
Indiana	19	15	30	16	16	19	17	22	25	20	18
Iowa	14	5	7	9	8	5	6	12	5	8	11
Kansas	15	7	11	5	17	9	5	9	10	13	4
Kentucky	20	18	24	16	10	18	16	20	21	25	18
Louisiana	23	24	13	22	17	16	14	15	18	12	21
Maine	6	5	4	3	3	3	2	3	3	6	4
Maryland	12	6	13	7	9	7	6	13	11	8	13
Massachusetts	10	6	8	9	9	4	11	12	2	7	9
Michigan	14	18	17	18	12	10	14	14	10	19	8
Minnesota	13	9	12	10	11	10	8	11	10	11	4
Mississippi	10	14	13	26	14	11	8	16	13	17	13
Missouri	15	25	31	32	16	23	30	15	25	25	26
Montana	9	8	4	6	7	4	2	8	8	7	13
Nebraska	8	8	5	5	8	11	4	2	4	3	2
Nevada	8	7	13	9	11	4	12	2	10	5	6
New Hampshire	4	2	2	0	0	2	1	5	2	0	0
New Jersey	10	14	16	17	17	17	8	20	19	11	16
New Mexico	15	13	9	11	14	16	10	15	12	11	18
New York	44	42	57	44	37	31	49	35	53	53	48
North Carolina	18	43	29	30	31	33	21	34	31	18	30
North Dakota	2	1	0	1	2	2	1	0	3	2	2
Ohio	26	27	32	24	21	22	13	13	20	27	14
Oklahoma	19	11	15	16	12	20	16	18	21	24	18
Oregon	12	17	9	9	13	7	8	10	11	12	8
Pennsylvania	31	28	30	26	26	26	35	31	28	42	33
Rhode Island	1	1	2	0	0	0	2	0	0	3	2
South Carolina	13	17	9	14	16	9	20	19	19	12	15
South Dakota	3	3	6	4	3	4	3	4	1	5	4
Tennessee	30	15	29	28	24	17	20	16	25	23	31
Texas	67	82	58	57	66	62	81	60	84	79	75
Utah	11	14	11	11	8	8	3	10	8	8	10
Vermont	5	1	1	1	2	0	2	2	0	2	1
Virginia	24	31	18	15	18	20	15	20	27	21	15
Washington	11	10	8	10	9	11	5	8	11	12	21
West Virginia	4	5	10	13	13	11	7	10	10	9	6
Wisconsin	11	9	5	9	14	10	14	12	13	4	9
Wyoming	5	6	5	3	6	4	9	6	6	8	7
U.S. Total	860	817	814	809	813	730	751	785	850	836	827

Note: A large truck is defined as a truck with a gross vehicle weight rating (GVWR) greater than 10,000 pounds.

Source: National Highway Traffic Safety Administration, Fatality Analysis Reporting System (FARS).

Table 34. Multiple-Vehicle Fatal Crashes Involving Large Trucks by State, 1997-2007

State	1997	1998	1999	2000	2001	2002	2003	2004	2005	2006	2007
Alabama	132	114	113	118	109	95	114	114	97	101	103
Alaska	3	1	5	2	7	4	3	8	3	3	2
Arizona	53	71	81	70	57	68	79	69	84	90	66
Arkansas	84	75	73	72	69	57	75	73	84	64	73
California	244	250	222	257	249	246	252	288	287	286	252
Colorado	55	34	48	49	62	38	50	52	45	47	49
Connecticut	15	18	16	25	19	13	16	18	16	23	16
Delaware	11	13	7	18	9	14	15	16	4	15	6
District of Columbia	3	1	1	1	1	0	0	2	1	1	0
Florida	215	251	259	234	252	268	258	273	283	255	210
Georgia	185	164	172	157	178	143	162	175	181	174	164
Hawaii	1	3	3	2	3	2	2	4	4	6	3
Idaho	22	19	20	21	24	23	29	22	21	23	18
Illinois	118	146	151	129	137	116	140	119	136	113	115
Indiana	124	141	137	122	104	91	125	117	100	100	106
Iowa	60	72	85	69	62	56	50	46	56	58	51
Kansas	63	65	67	65	56	61	57	67	57	48	65
Kentucky	80	76	62	69	81	86	92	90	87	68	77
Louisiana	95	104	98	86	94	79	93	79	89	78	83
Maine	15	16	19	21	19	18	11	15	14	12	15
Maryland	66	51	40	51	61	51	49	54	45	48	46
Massachusetts	27	25	27	36	18	18	23	27	20	25	17
Michigan	110	121	109	119	103	110	90	96	90	87	100
Minnesota	74	66	71	63	48	65	53	54	49	48	61
Mississippi	81	88	91	81	70	60	53	65	64	57	54
Missouri	118	120	113	113	101	114	110	117	117	95	94
Montana	15	10	11	18	18	16	19	6	14	18	16
Nebraska	38	31	47	43	47	36	42	37	35	24	35
Nevada	18	25	25	24	30	25	20	23	34	32	19
New Hampshire	8	8	7	10	13	12	11	8	9	7	10
New Jersey	69	52	40	62	54	46	61	62	74	56	44
New Mexico	30	27	34	31	31	29	27	37	38	51	35
New York	97	86	96	103	91	92	90	86	74	102	90
North Carolina	163	170	150	134	145	119	127	140	151	118	113
North Dakota	9	6	18	8	9	14	13	14	7	12	10
Ohio	159	147	151	142	135	160	121	147	138	114	102
Oklahoma	70	88	65	81	65	77	74	74	82	93	67
Oregon	56	48	32	42	38	37	41	36	48	35	38
Pennsylvania	150	134	157	138	131	131	153	134	142	127	146
Rhode Island	1	2	7	1	5	5	4	5	1	5	4
South Carolina	69	92	96	94	82	74	69	78	91	68	63
South Dakota	12	11	12	14	17	12	11	13	12	12	10
Tennessee	96	98	120	117	93	107	83	112	109	106	98
Texas	317	319	309	355	355	329	338	336	345	330	346
Utah	34	31	28	27	23	26	14	16	18	24	24
Vermont	9	8	7	7	4	10	8	10	8	8	3
Virginia	91	81	76	84	76	62	92	70	75	75	83
Washington	62	53	47	49	45	41	33	42	44	50	48
West Virginia	45	33	38	33	30	44	44	46	38	34	35
Wisconsin	66	77	67	82	77	75	72	78	63	66	65
Wyoming	16	20	16	15	14	19	16	23	17	22	13
U.S. Total	3,754	3,762	3,746	3,764	3,621	3,494	3,584	3,693	3,701	3,514	3,363

Note: A large truck is defined as a truck with a gross vehicle weight rating (GVWR) greater than 10,000 pounds.
 Source: National Highway Traffic Safety Administration, Fatality Analysis Reporting System (FARS).

Crashes

This chapter contains information on the circumstances of large truck crashes. Below is a summary of some of the information in this section:

- ◆ Of the 394,000 police-reported crashes involving large trucks in 2007, 4,190 (1 percent) resulted in at least one fatality, and 72,000 (18 percent) resulted in at least one nonfatal injury.
- ◆ Single-vehicle crashes made up 20 percent of all fatal crashes, 15 percent of all injury crashes, and 31 percent of all property damage only crashes involving large trucks.
- ◆ Just over three-fifths (62 percent) of all fatal crashes involving large trucks occurred on rural roads, and one-fourth (25 percent) occurred on Interstate highways.
- ◆ Thirty-four percent of all fatal crashes and 21 percent of all property damage only crashes involving large trucks occurred at night.
- ◆ The vast majority of fatal crashes (84 percent) and of nonfatal crashes (87 percent) involving large trucks occurred on weekdays (Monday through Friday).
- ◆ Collision with a vehicle in transport was the first harmful event in 75 percent of fatal crashes involving large trucks.
- ◆ Rollover was the first harmful event in only 5 percent of all fatal crashes involving large trucks and in only 3 percent of all nonfatal crashes involving large trucks.

Table 35. Crashes Involving Large Trucks by First Harmful Event and Crash Severity

First Harmful Event	Single-Vehicle		Multiple-Vehicle		Total	
	Number	Percent	Number	Percent	Number	Percent
Fatal Crashes						
Collision with Vehicle in Transport	0	0.0%	3,137	93.3%	3,137	74.9%
Collision with Fixed Object	276	33.4%	94	2.8%	370	8.8%
Collision with Pedestrian	245	29.6%	29	0.9%	274	6.5%
Overturn (Rollover)	147	17.8%	49	1.5%	196	4.7%
Collision with Pedalcycle	67	8.1%	3	0.1%	70	1.7%
Collision with Parked Motor Vehicle	25	3.0%	22	0.7%	47	1.1%
Collision with Train	21	2.5%	0	0.0%	21	0.5%
Collision with Other Object	11	1.3%	4	0.1%	15	0.4%
Collision with Animal	4	0.5%	3	0.1%	7	0.2%
Explosion/Fire	2	0.2%	0	0.0%	2	*
Other	22	2.7%	11	0.3%	33	0.8%
Unknown	7	0.8%	11	0.3%	18	0.4%
Total	827	100.0%	3,363	100.0%	4,190	100.0%
Injury Crashes						
Collision with Vehicle in Transport	*	*	59,000	95.2%	59,000	81.0%
Collision with Fixed Object	4,000	36.8%	2,000	2.5%	6,000	7.6%
Collision with Pedestrian	1,000	8.0%	*	*	1,000	1.2%
Overturn (Rollover)	4,000	35.5%	1,000	1.1%	5,000	6.2%
Collision with Pedalcycle	*	3.6%	*	*	*	0.6%
Collision with Parked Motor Vehicle	1,000	7.6%	*	0.1%	1,000	1.2%
Collision with Train	*	0.1%	*	*	*	*
Collision with Other Object	*	1.4%	*	0.2%	*	0.4%
Collision with Animal	1,000	4.8%	*	*	1,000	0.8%
Jackknife	*	1.8%	*	0.1%	*	0.4%
Explosion/Fire	*	*	*	*	*	*
Other	*	0.3%	*	0.6%	*	0.6%
Total	11,000	100.0%	62,000	100.0%	72,000	100.0%
Property Damage Only Crashes						
Collision with Vehicle in Transport	*	*	212,000	97.3%	212,000	67.0%
Collision with Fixed Object	30,000	30.8%	2,000	1.0%	33,000	10.3%
Collision with Pedestrian	*	*	*	*	*	*
Overturn (Rollover)	5,000	4.6%	*	*	5,000	1.5%
Collision with Pedalcycle	*	*	*	*	*	*
Collision with Parked Motor Vehicle	52,000	52.7%	*	*	52,000	16.4%
Collision with Train	1,000	0.7%	*	*	1,000	0.2%
Collision with Other Object	2,000	1.9%	*	0.2%	2,000	0.7%
Collision with Animal	4,000	4.5%	*	0.1%	5,000	1.5%
Jackknife	2,000	1.8%	*	*	2,000	0.6%
Explosion/Fire	1,000	0.7%	*	*	1,000	0.2%
Other	2,000	2.2%	3,000	1.4%	5,000	1.6%
Total	99,000	100.0%	218,000	100.0%	317,000	100.0%

*Less than 500 or less than 0.05 percent.

Note: A large truck is defined as a truck with a gross vehicle weight rating (GVWR) greater than 10,000 pounds.

Sources: Fatal Crashes: National Highway Traffic Safety Administration, Fatality Analysis Reporting System (FARS). Injury and Property Damage Only Crashes: National Highway Traffic Safety Administration, General Estimates System (GES).

Table 36. Fatal Crashes Involving Large Trucks by Speed Limit

Speed Limit	Single-Vehicle Crashes		Multiple-Vehicle Crashes		Total	
	Number	Percent	Number	Percent	Number	Percent
25 mph or Less	56	6.8%	29	0.9%	85	2.0%
30 - 35 mph	109	13.2%	200	5.9%	309	7.4%
40 - 45 mph	95	11.5%	534	15.9%	629	15.0%
50 - 55 mph	208	25.2%	1,314	39.1%	1,522	36.3%
60 - 65 mph	197	23.8%	790	23.5%	987	23.6%
70 - 75 mph	123	14.9%	448	13.3%	571	13.6%
80 - 85 mph	1	0.1%	3	0.1%	4	0.1%
No Statutory Limit	3	0.4%	5	0.1%	8	0.2%
Unknown	35	4.2%	40	1.2%	75	1.8%
Total	827	100.0%	3,363	100.0%	4,190	100.0%

Note: A large truck is defined as a truck with a gross vehicle weight rating (GVWR) greater than 10,000 pounds.
 Source: National Highway Traffic Safety Administration, Fatality Analysis Reporting System (FARS).

Table 37. Fatal Crashes Involving Large Trucks by Roadway Function Class

Rural			Urban		
Roadway Function Class	Number	Percent	Roadway Function Class	Number	Percent
Interstate	592	14.1%	Interstate	464	11.1%
Other Principal Arterial	833	19.9%	Freeway/Expressway	153	3.7%
Minor Arterial	560	13.4%	Other Principal Arterial	435	10.4%
Major Collector	398	9.5%	Minor Arterial	212	5.1%
Minor Collector	75	1.8%	Collector	80	1.9%
Local Road	145	3.5%	Local Road	169	4.0%
Unknown	4	0.1%	Unknown	3	0.1%
Total Rural	2,607	62.2%	Total Urban	1,516	36.2%
Unknown Rural or Urban	67	1.6%	Total Fatal Crashes	4,190	100.0%

Note: A large truck is defined as a truck with a gross vehicle weight rating (GVWR) greater than 10,000 pounds.
 Source: National Highway Traffic Safety Administration, Fatality Analysis Reporting System (FARS).

Table 38. Crashes Involving Large Trucks by Time of Day and Crash Severity

Time of Day	Fatal		Injury		Property Damage Only	
	Number	Percent	Number	Percent	Number	Percent
12am - 3am	339	8.1%	3,000	4.0%	13,000	4.1%
3am - 6am	379	9.0%	4,000	5.0%	10,000	3.3%
6am - 9am	629	15.0%	12,000	17.2%	47,000	14.7%
9am - 12pm	720	17.2%	13,000	18.4%	66,000	20.7%
12pm - 3pm	776	18.5%	16,000	22.7%	71,000	22.2%
3pm - 6pm	661	15.8%	14,000	18.8%	68,000	21.4%
6pm - 9pm	365	8.7%	6,000	7.9%	27,000	8.4%
9pm - 12am	315	7.5%	4,000	6.1%	17,000	5.2%
Unknown	6	0.1%	—	—	—	—
<i>Daytime (6am - 6pm)</i>	<i>2,786</i>	<i>66.5%</i>	<i>56,000</i>	<i>77.1%</i>	<i>251,000</i>	<i>79.0%</i>
<i>Nighttime (6pm - 6am)</i>	<i>1,404</i>	<i>33.5%</i>	<i>17,000</i>	<i>22.9%</i>	<i>67,000</i>	<i>21.0%</i>
Total	4,190	100.0%	72,000	100.0%	317,000	100.0%

Note: A large truck is defined as a truck with a gross vehicle weight rating (GVWR) greater than 10,000 pounds.

Sources: Fatal Crashes: National Highway Traffic Safety Administration, Fatality Analysis Reporting System (FARS). Injury and Property Damage Only Crashes: National Highway Traffic Safety Administration, General Estimates System (GES).

Table 39. Crashes Involving Large Trucks by Day of Week and Crash Severity

Day of Week	Fatal		Injury		Property Damage Only	
	Number	Percent	Number	Percent	Number	Percent
Sunday	256	6.1%	2,000	2.9%	18,000	5.8%
Monday	711	17.0%	13,000	18.2%	51,000	16.1%
Tuesday	661	15.8%	13,000	18.1%	53,000	16.8%
Wednesday	724	17.3%	12,000	16.1%	56,000	17.6%
Thursday	683	16.3%	14,000	19.7%	56,000	17.8%
Friday	741	17.7%	13,000	17.4%	57,000	17.8%
Saturday	414	9.9%	6,000	7.6%	26,000	8.2%
Total	4,190	100.0%	72,000	100.0%	317,000	100.0%

Note: A large truck is defined as a truck with a gross vehicle weight rating (GVWR) greater than 10,000 pounds.

Sources: Fatal Crashes: National Highway Traffic Safety Administration, Fatality Analysis Reporting System (FARS). Injury and Property Damage Only Crashes: National Highway Traffic Safety Administration, General Estimates System (GES).

Table 40. Crashes Involving Large Trucks by Trafficway Flow and Crash Severity

Trafficway Flow	Fatal		Injury		Property Damage Only	
	Number	Percent	Number	Percent	Number	Percent
Not Physically Divided	2,147	51.2%	2,000	3.0%	133,000	42.0%
Not Physically Divided, with Two-Way Continuous Left Lane	85	2.0%	30,000	41.8%	8,000	2.4%
Divided Median, No Barrier	1,180	28.2%	30,000	41.2%	95,000	30.1%
Divided Median, With Barrier	657	15.7%				
One-Way Traffic	93	2.2%	4,000	5.4%	16,000	5.0%
Unknown	28	0.7%	6,000	8.6%	65,000	20.5%
Total	4,190	100.0%	72,000	100.0%	317,000	100.0%

Note: A large truck is defined as a truck with a gross vehicle weight rating (GVWR) greater than 10,000 pounds.
 Sources: Fatal Crashes: National Highway Traffic Safety Administration, Fatality Analysis Reporting System (FARS). Injury and Property Damage Only Crashes: National Highway Traffic Safety Administration, General Estimates System (GES).

Table 41. Crashes Involving Large Trucks by Relation to Junction and Crash Severity

Relation to Junction	Fatal		Injury		Property Damage Only	
	Number	Percent	Number	Percent	Number	Percent
Non-Interchange						
Non-Junction	2,670	63.7%	36,000	49.1%	162,000	51.2%
Intersection	955	22.8%	14,000	18.9%	35,000	11.1%
Intersection Related	159	3.8%	11,000	15.0%	58,000	18.1%
Driveway, Alley Access	151	3.6%	6,000	8.0%	25,000	8.0%
Entrance/Exit Ramp Related	19	0.5%	*	0.5%	2,000	0.7%
Rail Grade Crossing	25	0.6%	*	0.1%	2,000	0.5%
On Bridge	0	0.0%	1,000	0.9%	2,000	0.6%
In Crossover	16	0.4%	*	0.2%	1,000	0.2%
Other	0	0.0%	*	0.3%	11,000	3.5%
Unknown	1	*	—	—	—	—
<i>Subtotal</i>	<i>3,996</i>	<i>95.4%</i>	<i>67,000</i>	<i>93.0%</i>	<i>298,000</i>	<i>93.9%</i>
Interchange Area						
Non-Junction	0	0.0%	1,000	0.8%	1,000	0.5%
Intersection	29	0.7%	*	0.1%	1,000	0.3%
Intersection Related	15	0.4%	*	0.5%	1,000	0.4%
Driveway, Alley Access	3	0.1%	*	*	*	*
Entrance/Exit Ramp Related	51	1.2%	4,000	5.4%	15,000	4.8%
On Bridge	0	0.0%	*	0.1%	*	0.1%
In Crossover	1	*	*	*	*	*
Other	94	2.2%	*	*	*	0.1%
Unknown	1	*	—	—	—	—
<i>Subtotal</i>	<i>194</i>	<i>4.6%</i>	<i>5,000</i>	<i>7.0%</i>	<i>19,000</i>	<i>6.1%</i>
Unknown Relation to Junction	0	0.0%	—	—	—	—
Total	4,190	100.0%	72,000	100.0%	317,000	100.0%

*Less than 500 or less than 0.05 percent.

Note: A large truck is defined as a truck with a gross vehicle weight rating (GVWR) greater than 10,000 pounds.
 Sources: Fatal Crashes: National Highway Traffic Safety Administration, Fatality Analysis Reporting System (FARS). Injury and Property Damage Only Crashes: National Highway Traffic Safety Administration, General Estimates System (GES).

Table 42. Crashes Involving Large Trucks by Relation to Roadway and Crash Severity

Relation to Roadway	Single-Vehicle		Multiple-Vehicle		Total	
	Number	Percent	Number	Percent	Number	Percent
Fatal Crashes						
On Roadway	395	47.8%	3,189	94.8%	3,584	85.5%
Shoulder	108	13.1%	71	2.1%	179	4.3%
Median	34	4.1%	38	1.1%	72	1.7%
Roadside	208	25.2%	51	1.5%	259	6.2%
Outside of Roadway	29	3.5%	3	0.1%	32	0.8%
Off Roadway, Location Unknown	46	5.6%	5	0.1%	51	1.2%
In Parking Lane	1	0.1%	0	0.0%	1	*
Gore	4	0.5%	1	*	5	0.1%
Separator	2	0.2%	2	0.1%	4	0.1%
Two-Way Continuous Left-Turn Lane	0	0.0%	2	0.1%	2	*
Unknown	0	0.0%	1	*	1	*
Total	827	100.0%	3,363	100.0%	4,190	100.0%
Injury Crashes						
On Roadway	4,000	38.2%	59,000	96.3%	63,000	87.7%
Shoulder	*	4.2%	*	0.5%	1,000	1.0%
Median	1,000	9.4%	1,000	1.1%	2,000	2.3%
Roadside	4,000	35.0%	1,000	2.0%	5,000	6.8%
Outside of Roadway	*	2.7%	*	*	*	0.4%
Off Roadway, Location Unknown	*	0.7%	*	0.1%	*	0.2%
In Parking Lane	1,000	5.7%	*	*	1,000	0.8%
Gore	*	1.8%	*	*	*	0.3%
Separator	*	*	*	*	*	*
Two-Way Continuous Left-Turn Lane	*	*	*	0.1%	*	0.1%
Unknown	*	2.4%	*	*	*	0.4%
Total	11,000	100.0%	62,000	100.0%	72,000	100.0%
Property Damage Only Crashes						
On Roadway	16,000	16.4%	214,000	98.0%	230,000	72.6%
Shoulder	3,000	3.1%	1,000	0.5%	4,000	1.3%
Median	3,000	3.0%	1,000	0.6%	4,000	1.3%
Roadside	24,000	23.8%	1,000	0.4%	24,000	7.7%
Outside of Roadway	3,000	3.4%	*	*	3,000	1.1%
Off Roadway, Location Unknown	2,000	1.6%	*	*	2,000	0.5%
In Parking Lane	46,000	46.8%	*	0.2%	47,000	14.7%
Gore	*	0.2%	*	*	*	0.1%
Separator	*	*	*	0.1%	*	0.1%
Two-Way Continuous Left-Turn Lane	*	*	*	*	*	*
Unknown	2,000	1.8%	*	0.2%	2,000	0.7%
Total	99,000	100.0%	218,000	100.0%	317,000	100.0%

*Less than 500 or less than 0.05 percent.

Note: A large truck is defined as a truck with a gross vehicle weight rating (GVWR) greater than 10,000 pounds.

Sources: Fatal Crashes: National Highway Traffic Safety Administration, Fatality Analysis Reporting System (FARS). Injury and Property Damage Only Crashes: National Highway Traffic Safety Administration, General Estimates System (GES).

Table 43. Crashes Involving Large Trucks by Weather Conditions and Crash Severity

Weather Conditions	Fatal		Injury		Property Damage Only	
	Number	Percent	Number	Percent	Number	Percent
Normal	3,625	86.5%	64,000	88.6%	281,000	88.7%
Rain	303	7.2%	5,000	7.2%	20,000	6.3%
Sleet, Hail	26	0.6%	*	0.1%	1,000	0.2%
Snow, Blowing Snow	143	3.4%	2,000	2.4%	10,000	3.0%
Fog, Smog, Smoke	70	1.7%	*	0.5%	2,000	0.6%
Severe Crosswinds	11	0.3%	*	*	*	*
Blowing Sand, Soil, Dirt	4	0.1%	*	*	*	*
Other	0	0.0%	1,000	1.2%	4,000	1.1%
Unknown	8	0.2%	—	—	—	—
Total	4,190	100.0%	72,000	100.0%	317,000	100.0%

*Less than 500 or less than 0.05 percent.

Note: A large truck is defined as a truck with a gross vehicle weight rating (GVWR) greater than 10,000 pounds.

Sources: Fatal Crashes: National Highway Traffic Safety Administration, Fatality Analysis Reporting System (FARS). Injury and Property Damage Only Crashes: National Highway Traffic Safety Administration, General Estimates System (GES).

Table 44. Crashes Involving Large Trucks by Road Surface Conditions and Crash Severity

Road Surface Condition	Fatal		Injury		Property Damage Only	
	Number	Percent	Number	Percent	Number	Percent
Dry	3,443	82.2%	60,000	82.3%	254,000	80.1%
Wet	503	12.0%	9,000	12.9%	44,000	13.9%
Snow or Slush	125	3.0%	1,000	2.0%	8,000	2.6%
Ice/Frost	97	2.3%	2,000	2.5%	8,000	2.7%
Sand, Dirt, Oil	3	0.1%	*	0.1%	2,000	0.6%
Water (Standing, Moving)	3	0.1%	*	*	*	*
Other	2	*	*	0.2%	1,000	0.2%
Unknown	14	0.3%	—	—	—	—
Total	4,190	100.0%	72,000	100.0%	317,000	100.0%

*Less than 500 or less than 0.05 percent.

Note: A large truck is defined as a truck with a gross vehicle weight rating (GVWR) greater than 10,000 pounds.

Sources: Fatal Crashes: National Highway Traffic Safety Administration, Fatality Analysis Reporting System (FARS). Injury and Property Damage Only Crashes: National Highway Traffic Safety Administration, General Estimates System (GES).

Table 45. Crashes Involving Large Trucks by Light Conditions and Crash Severity

Light Conditions	Fatal		Injury		Property Damage Only	
	Number	Percent	Number	Percent	Number	Percent
Daylight	2,693	64.3%	54,000	75.2%	247,000	77.8%
Dark, Not Lighted	973	23.2%	8,000	11.2%	26,000	8.3%
Dark But Lighted	376	9.0%	8,000	10.6%	35,000	11.2%
Dawn	98	2.3%	1,000	1.9%	5,000	1.6%
Dusk	46	1.1%	1,000	1.2%	4,000	1.2%
Unknown	4	0.1%	—	—	—	—
Total	4,190	100.0%	72,000	100.0%	317,000	100.0%

Note: A large truck is defined as a truck with a gross vehicle weight rating (GVWR) greater than 10,000 pounds.
 Sources: Fatal Crashes: National Highway Traffic Safety Administration, Fatality Analysis Reporting System (FARS). Injury and Property Damage Only Crashes: National Highway Traffic Safety Administration, General Estimates System (GES).

Table 46. Crashes Involving Large Trucks by Construction/Maintenance Zone and Crash Severity

Work Zone	Fatal		Injury		Property Damage Only	
	Number	Percent	Number	Percent	Number	Percent
Yes	174	4.2%	2,000	3.0%	10,000	3.2%
No	4,016	95.8%	70,000	96.4%	306,000	96.3%
Unknown	—	—	*	0.5%	1,000	0.4%
Total	4,190	100.0%	72,000	100.0%	317,000	100.0%

*Less than 500.
 Note: A large truck is defined as a truck with a gross vehicle weight rating (GVWR) greater than 10,000 pounds.
 Sources: Fatal Crashes: National Highway Traffic Safety Administration, Fatality Analysis Reporting System (FARS). Injury and Property Damage Only Crashes: National Highway Traffic Safety Administration, General Estimates System (GES).

Vehicles

This chapter presents information on large trucks involved in fatal, injury, and property damage only crashes. Some of the data in this chapter come from the MCMIS Crash File, which contains data on trucks and buses in crashes that meet the SAFETYNET recommended threshold. MCMIS data are used for the tables on vehicle configuration (Table 47), crashes by cargo body type (Table 48), gross vehicle weight rating (Table 49), hazardous materials cargo (Table 50), and hazardous materials released (Table 51). SAFETYNET nonfatal crashes tend to be more serious than GES nonfatal crashes, because the SAFETYNET threshold requires at least one injury involving immediate medical attention away from the crash scene, or at least one vehicle disabled as a result of the crash and transported away from the crash scene. Below is a summary of some of the vehicle information in this section:

- ◆ In 2007, 4,584 large trucks were involved in fatal crashes, 76,000 were involved in injury crashes, and 333,000 were involved in property damage only crashes.
- ◆ Large trucks made up 8 percent of all vehicles in fatal crashes, 2 percent of all vehicles in injury crashes, and 4 percent of all vehicles in property damage only crashes.
- ◆ Hazardous materials (HM) placards were present on 4 percent of the large trucks involved in fatal crashes and 1 percent of those in nonfatal crashes. HM was released from the cargo compartments of 13 percent of the placarded trucks.
- ◆ “Collision with motor vehicle in transport” was recorded as the most harmful event for 76 percent of the large trucks involved in fatal crashes.
- ◆ Singles (truck tractors pulling a single semi-trailer) accounted for 62 percent of the large trucks involved in fatal crashes. Doubles (tractors pulling two trailers) made up 3 percent of the large trucks involved in fatal crashes. Triples (tractors pulling three trailers) accounted for 0.1 percent of all large trucks involved in fatal crashes in 2007.

Table 47. Large Trucks in Crashes by Vehicle Configuration

Vehicle Configuration	Fatal		Injury		Towaway	
	Number	Percent	Number	Percent	Number	Percent
Single-Unit, 2 Axles	589	12.8%	10,255	18.0%	14,113	16.9%
Single-Unit, 3+ Axles	569	12.4%	7,998	14.1%	9,896	11.8%
Single-Unit, Axles Unknown	116	2.5%	—	—	—	—
Truck/Trailer(s)	113	2.5%	5,768	10.1%	9,683	11.6%
Truck Tractor (Bobtail)	82	1.8%	2,209	3.9%	2,620	3.1%
Tractor/Semi-trailer	2,856	62.3%	26,241	46.2%	40,384	48.3%
Tractor/Double	137	3.0%	1,506	2.6%	2,715	3.2%
Tractor/Triple	3	0.1%	55	0.1%	91	0.1%
Light Truck (HM Placard)	—	—	13	*	9	*
Unknown	119	2.6%	1,820	3.2%	2,667	3.2%
Missing	—	—	985	1.7%	1,369	1.6%
Total	4,584	100.0%	56,850	100.0%	83,547	100.0%

*Less than 0.05 percent.

Notes: A large truck is defined here as a truck, used for commercial purposes, with a gross vehicle weight rating (GVWR) or gross combination weight rating greater than 10,000 pounds. Injury crashes are defined here as crashes that resulted in at least one injury involving immediate medical attention away from the crash scene. (Note that this definition of an injury crash is not the same as that used in the GES injury estimates presented in other tables of this report.) Towaway crashes are defined here as crashes in which at least one vehicle was disabled as a result of the crash and transported away from the crash scene.

Sources: Fatal Crashes: National Highway Traffic Safety Administration, Fatality Analysis Reporting System (FARS). Injury and Towaway Crashes: Federal Motor Carrier Safety Administration, MCMIS Crash File.

Table 48. Large Trucks in Crashes by Cargo Body Type

Cargo Body Type	Fatal		Injury		Towaway	
	Number	Percent	Number	Percent	Number	Percent
Van/Enclosed Box	2,163	47.2%	20,269	35.7%	33,775	40.4%
Cargo Tank	370	8.1%	3,278	5.8%	4,332	5.2%
Flatbed	570	12.4%	6,489	11.4%	9,645	11.5%
Dump	399	8.7%	5,284	9.3%	6,654	8.0%
Concrete Mixer	66	1.4%	716	1.3%	674	0.8%
Auto Transporter	30	0.7%	559	1.0%	928	1.1%
Garbage/Refuse	99	2.2%	1,479	2.6%	2,008	2.4%
Grain, Gravel, etc.	128	2.8%	959	1.7%	1,340	1.6%
Pole	29	0.6%	382	0.7%	463	0.6%
Log	38	0.8%	84	0.1%	150	0.2%
Intermodal Container Chassis	5	0.1%	80	0.1%	111	0.1%
Vehicle Towing Another Vehicle	6	0.1%	48	0.1%	108	0.1%
No Cargo Body	180	3.9%	—	—	—	—
Other Large Truck	179	3.9%	8,554	15.0%	12,091	14.5%
Unknown Large Truck	306	6.7%	—	—	—	—
Not Applicable	1	*	4,278	7.5%	5,059	6.1%
Unknown	15	0.3%	4,391	7.7%	6,209	7.4%
Total	4,584	100.0%	56,850	100.0%	83,547	100.0%

*Less than 0.05 percent.

Notes: A large truck is defined here as a truck, used for commercial purposes, with a gross vehicle weight rating (GVWR) or gross combination weight rating greater than 10,000 pounds. Injury crashes are defined here as crashes that resulted in at least one injury involving immediate medical attention away from the crash scene. (Note that this definition of an injury crash is not the same as that used in the GES injury estimates presented in other tables of this report.) Towaway crashes are defined here as crashes in which at least one vehicle was disabled as a result of the crash and transported away from the crash scene.

Sources: Fatal Crashes: National Highway Traffic Safety Administration, Fatality Analysis Reporting System (FARS). Injury and Towaway Crashes: Federal Motor Carrier Safety Administration, MCMIS Crash File.

Table 49. Large Trucks in Crashes by Gross Vehicle Weight Rating

Gross Vehicle Weight Rating	Fatal		Injury		Towaway	
	Number	Percent	Number	Percent	Number	Percent
≤10,000 lbs	0	0.0%	370	0.7%	666	0.8%
10,001 - 26,000 lbs	562	12.3%	9,458	16.6%	14,015	16.8%
≥26,001 lbs	3997	87.2%	40,217	70.7%	60,713	72.7%
Missing	0	0.0%	6,805	12.0%	8,153	9.8%
Unknown	25	0.5%	—	—	—	—
Total	4,584	100.0%	56,850	100.0%	83,547	100.0%

Notes: A large truck is defined here as a truck, used for commercial purposes, with a gross vehicle weight rating (GVWR) or gross combination weight rating greater than 10,000 pounds. Injury crashes are defined here as crashes that resulted in at least one injury involving immediate medical attention away from the crash scene. (Note that this definition of an injury crash is not the same as that used in the GES injury estimates presented in other tables of this report.) Towaway crashes are defined here as crashes in which at least one vehicle was disabled as a result of the crash and transported away from the crash scene.

Sources: Fatal Crashes: National Highway Traffic Safety Administration, Fatality Analysis Reporting System (FARS). Injury and Towaway Crashes: Federal Motor Carrier Safety Administration, MCMIS Crash File.

Table 50. Large Trucks in Crashes by Hazardous Materials (HM) Cargo

HM Cargo	Fatal		Injury		Towaway	
	Number	Percent	Number	Percent	Number	Percent
Yes	176	3.8%	893	1.6%	1,254	1.5%
No	4,406	96.1%	40,829	71.8%	55,173	66.0%
Unknown	2	*	15,128	26.6%	27,120	32.5%
Total	4,584	100.0%	56,850	100.0%	83,547	100.0%

*Less than 0.05 percent.

Notes: A large truck is defined here as a truck, used for commercial purposes, with a gross vehicle weight rating (GVWR) or gross combination weight rating greater than 10,000 pounds. Injury crashes are defined here as crashes that resulted in at least one injury involving immediate medical attention away from the crash scene. (Note that this definition of an injury crash is not the same as that used in the GES injury estimates presented in other tables of this report.) Towaway crashes are defined here as crashes in which at least one vehicle was disabled as a result of the crash and transported away from the crash scene.

Sources: Fatal Crashes: National Highway Traffic Safety Administration, Fatality Analysis Reporting System (FARS). Injury and Towaway Crashes: Federal Motor Carrier Safety Administration, MCMIS Crash File.

Table 51. Large Trucks in Crashes by Hazardous Materials (HM) Cargo Type and HM Release

HM Cargo Type	HM Release							
	Yes		No		Unknown		Total	
	Number	Percent	Number	Percent	Number	Percent	Number	Percent
Fatal Crashes								
Explosives	2	3.2%	3	3.2%	1	5.3%	6	3.4%
Gases	6	9.5%	15	16.0%	0	0.0%	21	11.9%
Flammable Liquids	39	61.9%	57	60.6%	5	26.3%	101	57.4%
Flammable Solids	0	0.0%	1	1.1%	0	0.0%	1	0.6%
Oxidizing Substances	0	0.0%	1	1.1%	0	0.0%	1	0.6%
Poisonous and Infectious Substances	1	1.6%	1	1.1%	0	0.0%	2	1.1%
Radioactive	0	0.0%	0	0.0%	0	0.0%	0	0.0%
Corrosives	7	11.1%	8	8.5%	1	5.3%	16	9.1%
Miscellaneous Dangerous Goods	3	4.8%	2	2.1%	0	0.0%	5	2.8%
Unknown	5	7.9%	6	6.4%	12	63.2%	23	13.1%
Total	63	100.0%	94	100.0%	19	100.0%	176	100.0%
Nonfatal Crashes								
Explosives	11	4.1%	77	4.8%	11	4.1%	99	4.6%
Gases	29	10.9%	205	12.7%	29	10.7%	263	12.2%
Flammable Liquids	128	48.1%	529	32.8%	88	32.6%	745	34.7%
Flammable Solids	1	0.4%	15	0.9%	8	3.0%	24	1.1%
Oxidizing Substances	4	1.5%	14	0.9%	5	1.9%	23	1.1%
Poisonous and Infectious Substances	4	1.5%	13	0.8%	3	1.1%	20	0.9%
Radioactive	1	0.4%	1	0.1%	2	0.7%	4	0.2%
Corrosives	19	7.1%	62	3.8%	10	3.7%	91	4.2%
Miscellaneous Dangerous Goods	17	6.4%	177	11.0%	4	1.5%	198	9.2%
Unknown	52	19.5%	518	32.2%	110	40.7%	680	31.7%
Total	266	100.0%	1,611	100.0%	270	100.0%	2,147	100.0%

Note: A large truck is defined here as a truck, used for commercial purposes, with a gross vehicle weight rating (GVWR) or gross combination weight rating greater than 10,000 pounds.

Sources: Fatal Crashes: National Highway Traffic Safety Administration, Fatality Analysis Reporting System (FARS). Nonfatal Crashes: Federal Motor Carrier Safety Administration, MCMIS Crash File.

Table 52. Large Trucks in Crashes by Initial Point of Impact

Initial Point of Impact	Fatal		Injury		Property Damage Only	
	Number	Percent	Number	Percent	Number	Percent
Front	2,784	60.7%	32,000	42.6%	85,000	25.6%
Rear	759	16.6%	11,000	13.9%	62,000	18.7%
Left	464	10.1%	14,000	18.5%	67,000	20.2%
Right	312	6.8%	12,000	16.1%	91,000	27.3%
Non-Collision	112	2.4%	5,000	6.2%	12,000	3.7%
Other	95	2.1%	1,000	1.5%	7,000	2.0%
Unknown	58	1.3%	1,000	1.3%	8,000	2.5%
Total	4,584	100.0%	76,000	100.0%	333,000	100.0%

Note: A large truck is defined as a truck with a gross vehicle weight rating (GVWR) greater than 10,000 pounds.

Sources: Fatal Crashes: National Highway Traffic Safety Administration, Fatality Analysis Reporting System (FARS). Injury and Property Damage Only Crashes: National Highway Traffic Safety Administration, General Estimates System (GES).

Table 53. Large Trucks in Crashes by Most Harmful Event for the Large Truck

Most Harmful Event	Fatal		Injury		Property Damage Only	
	Number	Percent	Number	Percent	Number	Percent
Collision with Vehicle in Transport	3,478	75.9%	63,000	83.0%	228,000	68.6%
Collision with Fixed Object	159	3.5%	3,000	3.7%	30,000	9.0%
Collision with Pedestrian	294	6.4%	1,000	1.2%	*	*
Overturn (Rollover)	352	7.7%	6,000	8.2%	7,000	2.1%
Collision with Pedalcycle	70	1.5%	*	0.5%	*	*
Collision with Parked Motor Vehicle	23	0.5%	1,000	1.1%	52,000	15.6%
Collision with Train	20	0.4%	*	*	1,000	0.2%
Collision with Other Object	13	0.3%	*	0.2%	3,000	0.8%
Collision with Animal	3	0.1%	1,000	0.7%	5,000	1.4%
Jackknife	—	—	*	0.7%	2,000	0.6%
Explosion/Fire	122	2.7%	*	0.2%	1,000	0.2%
Other	25	0.5%	*	0.5%	5,000	1.5%
Unknown	25	0.5%	—	—	—	—
Total	4,584	100.0%	76,000	100.0%	333,000	100.0%

*Less than 500 or less than 0.05 percent.

Note: A large truck is defined as a truck with a gross vehicle weight rating (GVWR) greater than 10,000 pounds.

Sources: Fatal Crashes: National Highway Traffic Safety Administration, Fatality Analysis Reporting System (FARS). Injury and Property Damage Only Crashes: National Highway Traffic Safety Administration, General Estimates System (GES).

Table 54. Large Trucks in Crashes by Jackknife Occurrence

Jackknife	Fatal		Injury		Property Damage Only	
	Number	Percent	Number	Percent	Number	Percent
Yes	205	4.5%	1,000	1.8%	3,000	1.0%
No	4,379	95.5%	74,000	98.2%	330,000	99.0%
Total	4,584	100.0%	76,000	100.0%	333,000	100.0%

Note: A large truck is defined as a truck with a gross vehicle weight rating (GVWR) greater than 10,000 pounds.

Sources: Fatal Crashes: National Highway Traffic Safety Administration, Fatality Analysis Reporting System (FARS). Injury and Property Damage Only Crashes: National Highway Traffic Safety Administration, General Estimates System (GES).

Table 55. Large Trucks in Crashes with Passenger Vehicles by Crash Type and Severity

Crash Type	Fatal		Injury		Property Damage Only	
	Number	Percent	Number	Percent	Number	Percent
Large Truck Rear-Ending Passenger Vehicle	123	5.2%	11,000	30.0%	20,000	10.8%
Passenger Vehicle Rear-Ending Large Truck	383	16.2%	7,000	17.8%	21,000	11.1%
Large Truck Crossing Center Median (Head-On)	22	0.9%	2,000	5.5%	3,000	1.7%
Passenger Vehicle Crossing Center Median (Head-On)	367	15.6%	*	0.5%	*	0.2%
Large Truck Striking Passenger Vehicle (Other)	764	32.4%	2,000	4.8%	79,000	42.0%
Passenger Vehicle Striking Large Truck (Other)	566	24.0%	14,000	37.1%	51,000	27.2%
Other Collision	134	5.7%	2,000	4.4%	13,000	7.0%
Total	2,359	100.0%	37,000	100.0%	189,000	100.0%

*Less than 500.

Note: A large truck is defined as a truck with a gross vehicle weight rating (GVWR) greater than 10,000 pounds.

Sources: Fatal Crashes: National Highway Traffic Safety Administration, Fatality Analysis Reporting System (FARS). Injury and Property Damage Only Crashes: National Highway Traffic Safety Administration, General Estimates System (GES).

Table 56. Large Trucks in Fatal Crashes with Passenger Vehicles by Crash Type and Driver-Related Factors Recorded

Crash Type	Fatal Crashes	Crashes with Driver-Related Factors Recorded			
		For Large Truck		For Passenger Vehicle	
		Number	Percent	Number	Percent
Large Truck Rear-Ending Passenger Vehicle	123	79	64.2%	71	57.7%
Passenger Vehicle Rear-Ending Large Truck	383	83	21.7%	346	90.3%
Large Truck Crossing Center Median (Head-On)	22	22	100.0%	6	27.3%
Passenger Vehicle Crossing Center Median (Head-On)	367	36	9.8%	367	100.0%
Large Truck Striking Passenger Vehicle (Other)	764	231	30.2%	612	80.1%
Passenger Vehicle Striking Large Truck (Other)	566	140	24.7%	492	86.9%
Other Collision	134	18	13.4%	117	87.3%
Total	2,359	609	25.8%	2,011	85.2%

Note: A large truck is defined as a truck with a gross vehicle weight rating (GVWR) greater than 10,000 pounds.

Source: National Highway Traffic Safety Administration, Fatality Analysis Reporting System (FARS).

People

This chapter contains information on drivers of large trucks in fatal, injury, and property damage only crashes and on people killed or injured in large truck crashes. Some statistics are also listed for passenger vehicle drivers in order to make comparisons. It is important to note that the number of large truck drivers in crashes is not exactly equal to the number of large trucks in crashes, because no driver information is provided for some crashes. Below is a summary of some of the information in this section:

- ◆ Fatalities in crashes involving large trucks made up 12 percent of all fatalities in motor vehicle crashes in 2007.
- ◆ Injuries in large truck crashes made up 4 percent of all injuries in motor vehicle crashes in 2007.
- ◆ Of the 4,551 drivers of large trucks involved in fatal crashes, 257 (6 percent) were 25 years of age or younger, and 176 (about 4 percent) were 66 years of age or older. In comparison, 12,959 (29 percent) of the 44,212 drivers of passenger vehicles in fatal crashes were 25 years of age or younger, and 5,049 (about 11 percent) were 66 years of age or older.
- ◆ About 2 percent of all the drivers of large trucks involved in fatal crashes were female, as compared with 31 percent of all drivers of passenger vehicles involved in fatal crashes.
- ◆ One or more driver-related factors were recorded for 70 percent of the drivers of large trucks involved in single-vehicle fatal crashes but only for 31 percent of the drivers of large trucks involved in multiple-vehicle fatal crashes.
- ◆ Of the 4,551 drivers of large trucks involved in fatal crashes, 555 (12 percent) were not wearing a safety belt at the time of the crash; of those, 26 percent were completely or partially ejected from the vehicle.

Table 57. Persons Killed and Injured in Crashes Involving Large Trucks

Person Type	Single-Vehicle Crashes		Multiple-Vehicle Crashes		Total	
	Number	Percent	Number	Percent	Number	Percent
Persons Killed						
Driver of Large Truck	436	50.8%	265	6.7%	701	14.6%
Driver of Other Motor Vehicle	0	0.0%	2692	68.2%	2,692	56.0%
Passenger of Large Truck in Transport	62	7.2%	35	0.9%	97	2.0%
Passenger of Other Motor Vehicle in Transport	0	0.0%	908	23.0%	908	18.9%
Occupant of Motor Vehicle Not in Transport	11	1.3%	1	*	12	0.2%
Occupant of Non-Motor Vehicle Transport Device**	4	0.5%	0	0.0%	4	0.1%
Pedestrian	265	30.9%	45	1.1%	310	6.4%
Bicyclist	67	7.8%	3	0.1%	70	1.5%
Other Cyclist	0	0.0%	0	0.0%	0	0.0%
Other Person on Personal Conveyance/In Building	9	1.0%	0	0.0%	9	0.2%
Unknown Occupant Type in Motor Vehicle in Transport	4	0.5%	1	*	5	0.1%
Total	858	100.0%	3,950	100.0%	4,808	100.0%
Persons Injured						
Driver of Large Truck	9,000	72.2%	12,000	13.2%	20,000	20.1%
Driver of Other Motor Vehicle	*	*	53,000	59.6%	53,000	52.6%
Passenger of Large Truck in Transport	1,000	10.9%	2,000	1.9%	3,000	3.0%
Passenger of Other Motor Vehicle in Transport	*	*	22,000	25.0%	22,000	22.1%
Occupant of Motor Vehicle Not in Transport	1,000	4.4%	*	0.1%	1,000	0.6%
Occupant of a Non-Motor Vehicle Transport Device**	*	0.2%	*	*	*	*
Pedestrian	1,000	8.8%	*	0.2%	1,000	1.2%
Bicyclist	*	3.5%	*	*	*	0.4%
Other Nonoccupant	*	*	*	*	*	*
Unknown Occupant Type in Motor Vehicle in Transport	*	*	*	*	*	*
Total	12,000	100.0%	89,000	100.0%	101,000	100.0%

*Less than 500 or less than 0.05 percent.

**Refers to a person riding in an animal-drawn conveyance or on an animal, or an occupant of a railway train, etc.

Note: A large truck is defined as a truck with a gross vehicle weight rating (GVWR) greater than 10,000 pounds.

Sources: Persons Killed: National Highway Traffic Safety Administration, Fatality Analysis Reporting System (FARS).

Persons Injured: National Highway Traffic Safety Administration, General Estimates System (GES).

Table 58. Persons Killed in Crashes Involving Large Trucks by Age and Sex

Age Group (Years)	Male		Female		Unknown		Total	
	Number	Percent	Number	Percent	Number	Percent	Number	Percent
17 and under	210	6.2%	170	11.8%	0	0.0%	380	7.9%
18 - 25	573	17.0%	236	16.4%	0	0.0%	809	16.8%
26 - 35	526	15.6%	201	14.0%	0	0.0%	727	15.1%
36 - 45	579	17.2%	184	12.8%	0	0.0%	763	15.9%
46 - 55	608	18.0%	197	13.7%	0	0.0%	805	16.7%
56 - 65	423	12.6%	164	11.4%	0	0.0%	587	12.2%
66 - 75	214	6.4%	133	9.3%	0	0.0%	347	7.2%
76 and over	234	6.9%	148	10.3%	0	0.0%	382	7.9%
Unknown	3	0.1%	4	0.3%	1	100.0%	8	0.2%
Total	3,370	100.0%	1,437	100.0%	1	100.0%	4,808	100.0%

Note: A large truck is defined as a truck with a gross vehicle weight rating (GVWR) greater than 10,000 pounds.
 Source: National Highway Traffic Safety Administration, Fatality Analysis Reporting System (FARS).

Table 59. Persons Killed in Crashes Involving Passenger Vehicles by Age and Sex

Age Group (Years)	Male		Female		Unknown		Total	
	Number	Percent	Number	Percent	Number	Percent	Number	Percent
17 and under	2,042	8.2%	1,470	12.9%	0	0.0%	3,512	9.7%
18 - 25	6,090	24.5%	2,176	19.0%	2	25.0%	8,268	22.8%
26 - 35	4,171	16.8%	1,464	12.8%	0	0.0%	5,635	15.5%
36 - 45	3,586	14.4%	1,523	13.3%	0	0.0%	5,109	14.1%
46 - 55	3,504	14.1%	1,475	12.9%	0	0.0%	4,979	13.7%
56 - 65	2,208	8.9%	1,110	9.7%	0	0.0%	3,318	9.1%
66 - 75	1,452	5.9%	893	7.8%	0	0.0%	2,345	6.5%
76 and over	1,679	6.8%	1,304	11.4%	0	0.0%	2,983	8.2%
Unknown	88	0.4%	24	0.2%	6	75.0%	118	0.3%
Total	24,820	100.0%	11,439	100.0%	8	100.0%	36,267	100.0%

Note: A passenger vehicle is defined as a car or light truck (including pickups, vans, and sport utility vehicles).
 Source: National Highway Traffic Safety Administration, Fatality Analysis Reporting System (FARS).

Table 60. Persons Injured in Crashes Involving Large Trucks by Age and Sex

Age Group (Years)	Male		Female		Total	
	Number	Percent	Number	Percent	Number	Percent
17 and under	3,000	5.1%	6,000	14.2%	9,000	8.9%
18 - 25	12,000	19.4%	9,000	22.5%	21,000	20.7%
26 - 35	11,000	18.5%	8,000	19.4%	19,000	18.9%
36 - 45	13,000	21.6%	5,000	12.7%	18,000	17.9%
46 - 55	13,000	21.6%	5,000	12.7%	18,000	18.0%
56 - 65	5,000	7.8%	4,000	10.7%	9,000	9.0%
66 - 75	2,000	3.9%	2,000	4.8%	4,000	4.3%
76 and over	1,000	2.0%	1,000	3.0%	2,000	2.4%
Total	59,000	100.0%	42,000	100.0%	101,000	100.0%

Note: A large truck is defined as a truck with a gross vehicle weight rating (GVWR) greater than 10,000 pounds.
 Source: National Highway Traffic Safety Administration, General Estimates System (GES).

Table 61. Persons Injured in Crashes Involving Passenger Vehicles by Age and Sex

Age Group (Years)	Male		Female		Total	
	Number	Percent	Number	Percent	Number	Percent
17 and under	174,000	15.3%	193,000	15.2%	368,000	15.2%
18 - 25	278,000	24.4%	279,000	21.9%	557,000	23.1%
26 - 35	211,000	18.5%	222,000	17.4%	433,000	17.9%
36 - 45	169,000	14.8%	195,000	15.3%	364,000	15.1%
46 - 55	149,000	13.1%	169,000	13.3%	318,000	13.2%
56 - 65	83,000	7.3%	112,000	8.8%	195,000	8.1%
66 - 75	43,000	3.8%	61,000	4.8%	104,000	4.3%
76 and over	32,000	2.8%	42,000	3.3%	74,000	3.1%
Total	1,139,000	100.0%	1,273,000	100.0%	2,412,000	100.0%

Note: A passenger vehicle is defined as a car or light truck (including pickups, vans, and sport utility vehicles).
 Source: National Highway Traffic Safety Administration, General Estimates System (GES).

Table 62. Persons Killed and Injured in Crashes Involving Large Trucks by Time of Day

Time of Day	Persons Killed		Persons Injured	
	Number	Percent	Number	Percent
12am - 3am	380	7.9%	5,000	5.3%
3am - 6am	419	8.7%	4,000	4.3%
6am - 9am	718	14.9%	16,000	15.6%
9am - 12pm	813	16.9%	19,000	18.7%
12pm - 3pm	895	18.6%	22,000	21.4%
3pm - 6pm	770	16.0%	21,000	20.9%
6pm - 9pm	432	9.0%	8,000	7.9%
9pm - 12am	373	7.8%	6,000	5.8%
Unknown	8	0.2%	*	*
<i>Daytime (6am - 6pm)</i>	<i>3,196</i>	<i>66.5%</i>	<i>77,000</i>	<i>76.6%</i>
<i>Nighttime (6pm - 6am)</i>	<i>1,604</i>	<i>33.4%</i>	<i>24,000</i>	<i>23.4%</i>
Total	4,808	100.0%	101,000	100.0%

*Less than 500 or less than 0.05 percent.

Note: A large truck is defined as a truck with a gross vehicle weight rating (GVWR) greater than 10,000 pounds.

Sources: Persons Killed: National Highway Traffic Safety Administration, Fatality Analysis Reporting System (FARS).

Persons Injured: National Highway Traffic Safety Administration, General Estimates System (GES).

Table 63. Drivers of Large Trucks in Crashes by Age, Sex, and Crash Severity

Age Group (Years)	Male		Female		Unknown		Total	
	Number	Percent	Number	Percent	Number	Percent	Number	Percent
Fatal Crashes								
17 and Under	1	*	0	0.0%	0	0.0%	1	*
18 - 25	253	5.7%	3	2.9%	0	0.0%	256	5.6%
26 - 35	828	18.7%	24	23.1%	0	0.0%	852	18.7%
36 - 45	1,277	28.9%	29	27.9%	0	0.0%	1,306	28.7%
46 - 55	1,190	26.9%	30	28.8%	0	0.0%	1,220	26.8%
56 - 65	697	15.8%	15	14.4%	0	0.0%	712	15.6%
66 - 75	142	3.2%	2	1.9%	0	0.0%	144	3.2%
76 and Over	31	0.7%	1	1.0%	0	0.0%	32	0.7%
Unknown	3	0.1%	0	0.0%	25	100.0%	28	0.6%
Total	4,422	100.0%	104	100.0%	25	100.0%	4,551	100.0%
Injury Crashes								
17 and Under	*	0.2%	*	4.4%	—	—	*	0.4%
18 - 25	7,000	10.3%	1,000	25.5%	—	—	8,000	11.1%
26 - 35	15,000	21.3%	*	8.6%	—	—	15,000	20.7%
36 - 45	19,000	26.8%	1,000	33.9%	—	—	20,000	27.2%
46 - 55	21,000	29.0%	1,000	22.8%	—	—	22,000	28.7%
56 - 65	7,000	9.9%	*	4.5%	—	—	7,000	9.6%
66 - 75	2,000	2.3%	*	0.3%	—	—	2,000	2.2%
76 and Over	*	0.2%	*	*	—	—	*	0.2%
Total	71,000	100.0%	4,000	100.0%	—	—	75,000	100.0%
Property Damage Only Crashes								
17 and Under	*	0.1%	*	0.9%	—	—	*	0.1%
18 - 25	34,000	10.9%	4,000	16.1%	—	—	38,000	11.3%
26 - 35	55,000	17.8%	2,000	7.8%	—	—	57,000	17.1%
36 - 45	73,000	23.8%	3,000	12.0%	—	—	76,000	23.0%
46 - 55	106,000	34.3%	14,000	59.5%	—	—	120,000	36.1%
56 - 65	32,000	10.4%	1,000	3.6%	—	—	33,000	10.0%
66 - 75	7,000	2.2%	*	*	—	—	7,000	2.1%
76 and Over	1,000	0.4%	*	*	—	—	1,000	0.4%
Total	309,000	100.0%	23,000	100.0%	—	—	332,000	100.0%

*Less than 500 or less than 0.05 percent.

Note: A large truck is defined as a truck with a gross vehicle weight rating (GVWR) greater than 10,000 pounds.

Sources: Fatal Crashes: National Highway Traffic Safety Administration, Fatality Analysis Reporting System (FARS). Injury and Property Damage Only Crashes: National Highway Traffic Safety Administration, General Estimates System (GES).

Table 64. Drivers of Passenger Vehicles in Crashes by Age, Sex, and Crash Severity

Age Group (Years)	Male		Female		Unknown		Total	
	Number	Percent	Number	Percent	Number	Percent	Number	Percent
Fatal Crashes								
17 and Under	1,331	4.4%	725	5.3%	0	0.0%	2,056	4.7%
18 - 25	7,846	25.8%	3,054	22.4%	3	1.7%	10,903	24.7%
26 - 35	5,788	19.0%	2,545	18.7%	3	1.7%	8,336	18.9%
36 - 45	4,893	16.1%	2,344	17.2%	0	0.0%	7,237	16.4%
46 - 55	4,199	13.8%	1,952	14.3%	0	0.0%	6,151	13.9%
56 - 65	2,860	9.4%	1,340	9.8%	0	0.0%	4,200	9.5%
66 - 75	1,729	5.7%	799	5.9%	0	0.0%	2,528	5.7%
76 and Over	1,671	5.5%	850	6.2%	0	0.0%	2,521	5.7%
Unknown	86	0.3%	19	0.1%	175	96.7%	280	0.6%
Total	30,403	100.0%	13,628	100.0%	181	100.0%	44,212	100.0%
Injury Crashes								
17 and Under	87,000	5.6%	71,000	5.3%	—	—	157,000	5.5%
18 - 25	392,000	25.4%	316,000	23.9%	—	—	708,000	24.7%
26 - 35	308,000	20.0%	277,000	20.9%	—	—	584,000	20.4%
36 - 45	259,000	16.8%	244,000	18.5%	—	—	503,000	17.6%
46 - 55	238,000	15.4%	198,000	15.0%	—	—	436,000	15.2%
56 - 65	138,000	9.0%	121,000	9.1%	—	—	259,000	9.1%
66 - 75	72,000	4.7%	58,000	4.3%	—	—	130,000	4.5%
76 and over	48,000	3.1%	40,000	3.0%	—	—	88,000	3.1%
Total	1,542,000	100.0%	1,323,000	100.0%	—	—	2,865,000	100.0%
Property Damage Only Crashes								
17 and Under	218,000	5.5%	174,000	5.7%	—	—	391,000	5.6%
18 - 25	958,000	24.1%	733,000	24.3%	—	—	1,691,000	24.1%
26 - 35	801,000	20.1%	589,000	19.5%	—	—	1,390,000	19.9%
36 - 45	683,000	17.1%	534,000	17.7%	—	—	1,217,000	17.4%
46 - 55	694,000	17.4%	510,000	16.9%	—	—	1,204,000	17.2%
56 - 65	354,000	8.9%	282,000	9.3%	—	—	635,000	9.1%
66 - 75	169,000	4.2%	112,000	3.7%	—	—	281,000	4.0%
76 and Over	105,000	2.6%	88,000	2.9%	—	—	193,000	2.8%
Total	3,981,000	100.0%	3,021,000	100.0%	—	—	7,002,000	100.0%

Note: A large truck is defined as a truck with a gross vehicle weight rating (GVWR) greater than 10,000 pounds.

Sources: Fatal Crashes: National Highway Traffic Safety Administration, Fatality Analysis Reporting System (FARS). Injury and Property Damage Only Crashes: National Highway Traffic Safety Administration, General Estimates System (GES).

Table 65. Drivers of Large Trucks in Fatal Crashes by Restraint Use and Ejection from the Vehicle

Restraint Use	Ejection from the Vehicle								Total	
	Not Ejected		Totally Ejected		Partially Ejected		Unknown			
	Number	Percent	Number	Percent	Number	Percent	Number	Percent	Number	Percent
None	408	9.4%	110	71.9%	35	61.4%	2	15.4%	555	12.2%
Shoulder Belt	17	0.4%	0	0.0%	0	0.0%	0	0.0%	17	0.4%
Lap Belt	133	3.1%	1	0.7%	1	1.8%	1	7.7%	136	3.0%
Lap and Shoulder	3,425	79.1%	12	7.8%	15	26.3%	3	23.1%	3,455	75.9%
Type Unknown	1	*	0	0.0%	0	0.0%	0	0.0%	1	*
Used Improperly	4	0.1%	0	0.0%	1	1.8%	0	0.0%	5	0.1%
Unknown	340	7.9%	30	19.6%	5	8.8%	7	53.8%	382	8.4%
Total	4,328	100.0%	153	100.0%	57	100.0%	13	100.0%	4,551	100.0%

*Less than 0.05 percent.

Note: A large truck is defined as a truck with a gross vehicle weight rating (GVWR) greater than 10,000 pounds.

Source: National Highway Traffic Safety Administration, Fatality Analysis Reporting System (FARS).

**Table 66. Drivers of Large Trucks in Fatal Crashes
by Commercial Drivers License (CDL) Status and License Compliance**

CDL Status	Number	Percent	License Compliance	Number	Percent
Valid	3,841	84.4%	Valid License for Class of Vehicle	4,234	93.0%
No CDL	478	10.5%	Not Licensed	14	0.3%
Suspended	38	0.8%	No License Required for Class of Vehicle	1	*
Revoked, Expired, Canceled	30	0.7%	No Valid License for Class of Vehicle	136	3.0%
Other Not Valid	17	0.4%	Unknown if Required for Class of Vehicle	23	0.5%
Unknown	147	3.2%	Unknown	143	3.1%
Total	4,551	100.0%	Total	4,551	100.0%

*Less than 0.05 percent.

Note: A large truck is defined as a truck with a gross vehicle weight rating (GVWR) greater than 10,000 pounds.

Sources: National Highway Traffic Safety Administration, Fatality Analysis Reporting System (FARS).

Table 67. Drivers of Large Trucks in Fatal Crashes by Driver-Related Factors and Violations Recorded

Driver-Related Factors	Single-Vehicle Crashes		Multiple-Vehicle Crashes		Total	
	Number	Percent	Number	Percent	Number	Percent
Failure to keep in proper lane	228	27.7%	300	8.0%	528	11.6%
Driving too fast for conditions or in excess of posted speed limit	152	18.5%	228	6.1%	380	8.3%
Inattentive (talking, eating, etc.)	105	12.8%	158	4.2%	263	5.8%
Failure to yield right-of-way	40	4.9%	153	4.1%	193	4.2%
Failure to obey traffic signs	23	2.8%	105	2.8%	128	2.8%
Cellular phone in vehicle	21	2.6%	100	2.7%	121	2.7%
Following improperly	5	0.6%	87	2.3%	92	2.0%
Other non-moving traffic violations	12	1.5%	74	2.0%	86	1.9%
Drowsy, asleep, fatigued	51	6.2%	27	0.7%	78	1.7%
Swerving or sliding due to water, snow, slush, oil, wet leaves etc.	11	1.3%	65	1.7%	76	1.7%
Overcorrecting	58	7.1%	15	0.4%	73	1.6%
Rain, snow, fog, smoke, sand, dust	8	1.0%	61	1.6%	69	1.5%
Making improper turn	20	2.4%	36	1.0%	56	1.2%
Erratic or reckless driving	24	2.9%	29	0.8%	53	1.2%
Under the influence of alcohol, drugs or medication	24	2.9%	27	0.7%	51	1.1%
Unknown	26	3.2%	21	0.6%	47	1.0%
Hit and run	12	1.5%	28	0.8%	40	0.9%
Improper lane change	3	0.4%	28	0.8%	31	0.7%
Non-traffic violation charged (manslaughter or other homicide offense)	1	0.1%	25	0.7%	26	0.6%
Operating without required equipment	9	1.1%	14	0.4%	23	0.5%
Noncompliance with physical or other imposed restrictions	6	0.7%	15	0.4%	21	0.5%
Stopped in roadway	0	0.0%	20	0.5%	20	0.4%
Overloading or improper loading	6	0.7%	13	0.3%	19	0.4%
Vehicle in road	2	0.2%	17	0.5%	19	0.4%
Starting or backing improperly	10	1.2%	8	0.2%	18	0.4%
Ill, passed out, blackout	11	1.3%	5	0.1%	16	0.4%
Tire blowout or flat	6	0.7%	9	0.2%	15	0.3%
Curve, hill, etc.	1	0.1%	14	0.4%	15	0.3%
Passing with insufficient sight distance	1	0.1%	13	0.3%	14	0.3%
Driver-Related Factor(s) Recorded	579	70.4%	1,154	30.9%	1,733	38.1%
No Driver-Related Factors Recorded	243	29.6%	2,575	69.1%	2,818	61.9%
Total	822	100.0%	3,729	100.0%	4,551	100.0%
Moving Violation(s) Recorded	68	8.3%	382	10.2%	450	9.9%
No Moving Violations Recorded	754	91.7%	3,347	89.8%	4,101	90.1%
Total	822	100.0%	3,729	100.0%	4,551	100.0%

Note: A large truck is defined as a truck with a gross vehicle weight rating (GVWR) greater than 10,000 pounds.
 Source: National Highway Traffic Safety Administration, Fatality Analysis Reporting System (FARS).

