



UNCLASSIFIED

Priority Placement Program (PPP) Registration for Overseas Employees

Mr. Ernest Rivera, DSN 370-9433

Agenda

- **Program Overview**
- **Program Administration**
- **Registration Categories**
- **Referral Priorities**
- **Overseas Registration Changes**
- **Changing the PPP Manual**
- **Management-Directed Reassignments**



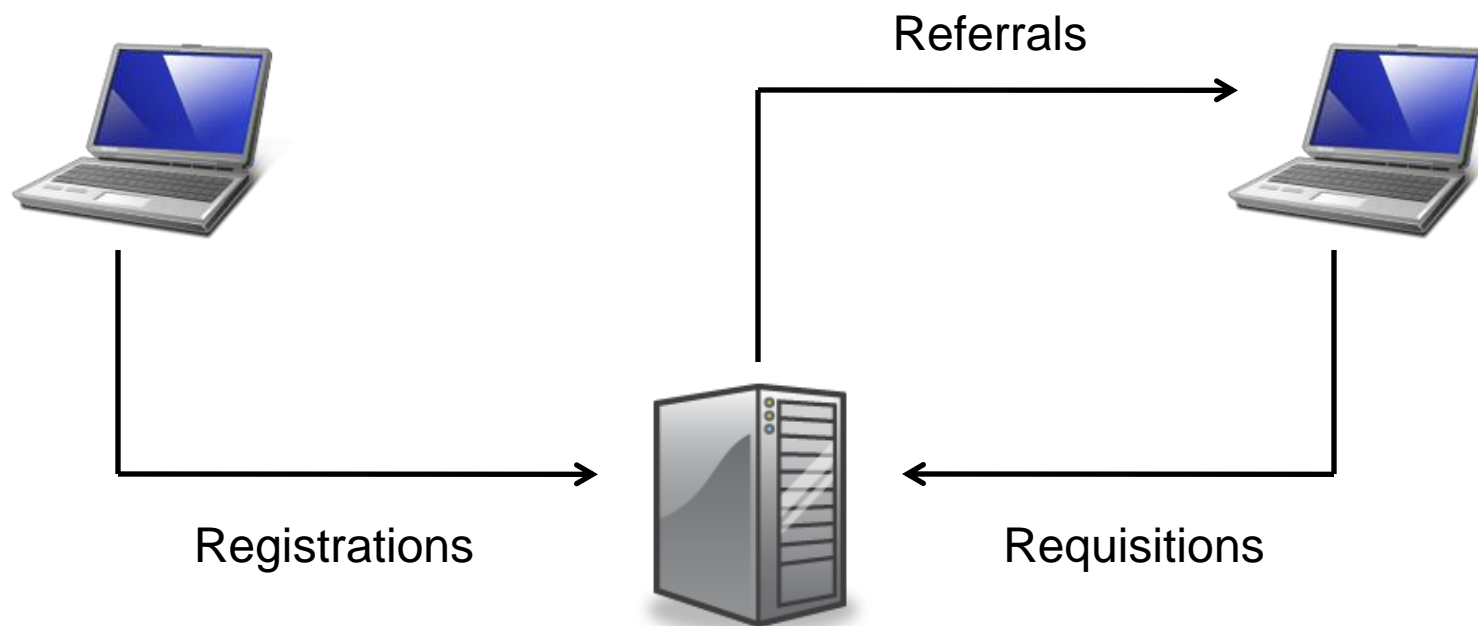


UNCLASSIFIED

Program Overview

Releasing Activity

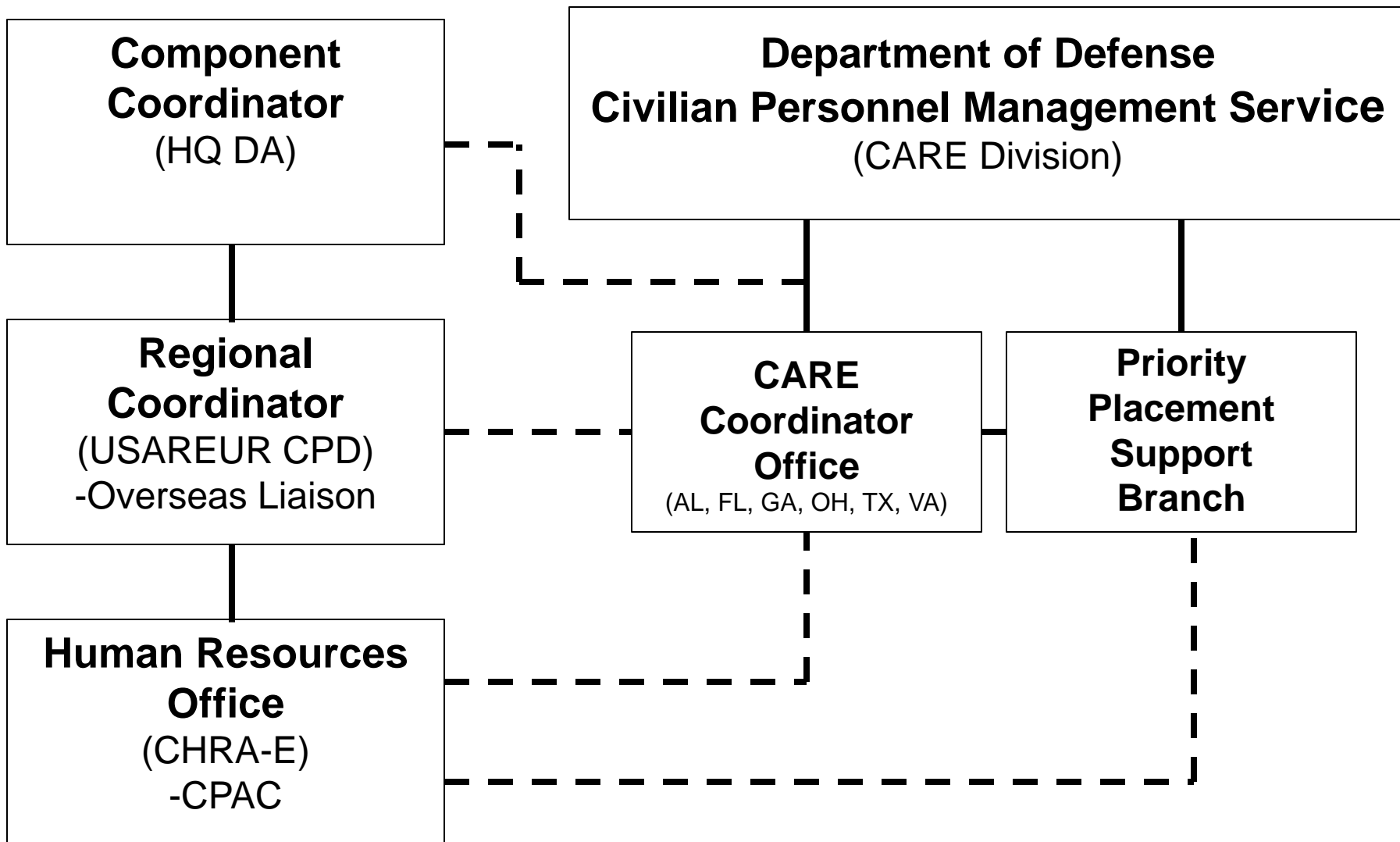
Gaining Activity



Automated Stopper and Referral System (ASARS)



Program Administration



Registration Categories

- **Displaced**
 - Registrant subject to involuntary separation through no fault of their own
- **Non-displaced**
 - All other registrants to include non-displaced overseas employees, overseas family members, and military spouses





Referral Priorities

- Referral priorities indicate the order in which PPP registrants are matched to vacancies
- **Priority 1 & 2 (P1 & P2)**
 - Placement is mandatory
 - Displaced registrants
- **Priority 3 (P3)**
 - Placement is not mandatory (only blocks appointments outside of component)
 - Non-displaced registrants



Overseas Registration Changes

- **Prior to PPP manual changes, non-displaced employees were referred as P2 to their own components**
- **DoD granted Army a 1 year exception (DoD CARE memo dated 24 May 2010)**
 - Exception expired 24 May 2011
- **All non-displaced registrants are now referred as P3 to all components**



Overseas Registration Changes

- **1st year of registration – referred to all DoD components as a P3**
- **2nd year of registration – referred only within Army as a P3**
 - Component coordinator may approve non-selection of own P3 non-displaced employees
- **3rd year of registration – priority changes to “N”**
 - Selection is still not mandatory (P3 registrants do not block N registrants)
 - N registrants do not block selection of candidates from outside the component

Overseas Registration Changes

- **Employees with return rights to a lower grade are eligible to register as P3 non-displaced registrants for their current grade**
 - Eligibility ends 30 days before tour ends
 - Employees must exercise return rights upon expiration of eligibility





Changing the PPP Manual

- **Changes to the PPP Manual are proposed and approved by the 5 administering components:**
 - **Army**
 - **Air Force**
 - **Navy**
 - **Defense Logistics Agency (DLA)**
 - **Washington Headquarters Services**



Management-Directed Reassignments

- **Employees offered a management-directed reassignment (MDR) to WAAF may:**
 - **Accept the MDR;**
 - **Exercise return rights (if applicable); or**
 - **Decline the MDR and register in the PPP as a P2 (displaced employee)**
 - **Employees are only eligible for this option if able to complete the equivalent of a renewal tour within the established DoD 5 year tour limitation**
 - **Registration is limited to activities within the commuting area of the employee's current duty location**
 - **May alternatively register as a P3 (non-displaced employee) for CONUS activities**

Management-Directed Reassignments

- **P2 registrants declining their MDR will be scheduled for removal upon effective date of the MDR**
- **P2 registrants may remain in the PPP until:**
 - They are placed;
 - Decline a valid offer through PPP;
 - Exercise their return rights if within 30 days of removal date; or
 - **May remain in the PPP 1 year after removal for CONUS positions**
 - Upon removal employee returns CONUS and is registered as a P2 for activities in the local commuting area only





Management-Directed Reassignments

- **P3 registrants declining their MDR will be scheduled for removal upon effective date of the MDR**
- **P3 registrants may remain in the PPP until:**
 - They are placed;
 - Decline a valid offer through PPP;
 - Exercise their return rights if within 30 days of removal date; or
 - May remain in the PPP 1 year after removal for CONUS positions
 - Upon removal employee returns CONUS and registration will continue as a P2 for activities in the local commuting area only



UNCLASSIFIED

Questions

