

# Executive Summary

An emissions inventory that identifies and quantifies a country's primary anthropogenic<sup>1</sup> sources and sinks of greenhouse gases is essential for addressing climate change. This inventory adheres to both 1) a comprehensive and detailed set of methodologies for estimating sources and sinks of anthropogenic greenhouse gases, and 2) a common and consistent mechanism that enables Parties to the United Nations Framework Convention on Climate Change (UNFCCC) to compare the relative contribution of different emission sources and greenhouse gases to climate change.

In 1992, the United States signed and ratified the UNFCCC. As stated in Article 2 of the UNFCCC, "The ultimate objective of this Convention and any related legal instruments that the Conference of the Parties may adopt is to achieve, in accordance with the relevant provisions of the Convention, stabilization of greenhouse gas concentrations in the atmosphere at a level that would prevent dangerous anthropogenic interference with the climate system. Such a level should be achieved within a time-frame sufficient to allow ecosystems to adapt naturally to climate change, to ensure that food production is not threatened and to enable economic development to proceed in a sustainable manner."<sup>2</sup>

Parties to the Convention, by ratifying, "shall develop, periodically update, publish and make available...national inventories of anthropogenic emissions by sources and removals by sinks of all greenhouse gases not controlled by the Montreal Protocol, using comparable methodologies..."<sup>3</sup> The United States views this report as an opportunity to fulfill these commitments.

This chapter summarizes the latest information on U.S. anthropogenic greenhouse gas emission trends from 1990 through 2008. To ensure that the U.S. emissions inventory is comparable to those of other UNFCCC Parties, the estimates presented here were calculated using methodologies consistent with those recommended in the Revised 1996 IPCC Guidelines for National Greenhouse Gas Inventories (IPCC/UNEP/OECD/IEA 1997), the IPCC Good Practice Guidance and Uncertainty Management in National Greenhouse Gas Inventories (IPCC 2000), and the IPCC Good Practice Guidance for Land Use, Land-Use Change, and Forestry (IPCC 2003). Additionally, the U.S. emission inventory has begun to incorporate new methodologies and data from the 2006 IPCC Guidelines for National Greenhouse Gas Inventories (IPCC 2006). The structure of this report is consistent with the UNFCCC guidelines for inventory reporting.<sup>4</sup> For most source categories, the Intergovernmental Panel on Climate Change (IPCC) methodologies were expanded, resulting in a more comprehensive and detailed estimate of emissions.

[BEGIN BOX]

## Box ES- 1: Recalculations of Inventory Estimates

Each year, emission and sink estimates are recalculated and revised for all years in the Inventory of U.S. Greenhouse Gas Emissions and Sinks, as attempts are made to improve both the analyses themselves, through the use of better methods or data, and the overall usefulness of the report. In this effort, the United States follows the IPCC Good Practice Guidance (IPCC 2000), which states, regarding recalculations of the time series, "It is good practice to recalculate historic emissions when methods are changed or refined, when new source categories are included in the national inventory, or when errors in the estimates are identified and corrected." In general, recalculations are made to the U.S. greenhouse gas emission estimates either to incorporate new methodologies or, most commonly, to update recent historical data.

---

<sup>1</sup> The term "anthropogenic", in this context, refers to greenhouse gas emissions and removals that are a direct result of human activities or are the result of natural processes that have been affected by human activities (IPCC/UNEP/OECD/IEA 1997).

<sup>2</sup> Article 2 of the Framework Convention on Climate Change published by the UNEP/WMO Information Unit on Climate Change. See <<http://unfccc.int>>.

<sup>3</sup> Article 4(1)(a) of the United Nations Framework Convention on Climate Change (also identified in Article 12). Subsequent decisions by the Conference of the Parties elaborated the role of Annex I Parties in preparing national inventories. See <<http://unfccc.int>>.

<sup>4</sup> See <<http://unfccc.int/resource/docs/cop8/08.pdf>>.

1 In each Inventory report, the results of all methodology changes and historical data updates are presented in the  
2 "Recalculations and Improvements" chapter; detailed descriptions of each recalculation are contained within each  
3 source's description contained in the report, if applicable. In general, when methodological changes have been  
4 implemented, the entire time series (in the case of the most recent inventory report, 1990 through 2007) has been  
5 recalculated to reflect the change, per IPCC Good Practice Guidance. Changes in historical data are generally the  
6 result of changes in statistical data supplied by other agencies. References for the data are provided for additional  
7 information.

8  
9 [END BOX]  
10

## 11 **Background Information**

12 Naturally occurring greenhouse gases include water vapor, carbon dioxide (CO<sub>2</sub>), methane (CH<sub>4</sub>), nitrous oxide  
13 (N<sub>2</sub>O), and ozone (O<sub>3</sub>). Several classes of halogenated substances that contain fluorine, chlorine, or bromine are  
14 also greenhouse gases, but they are, for the most part, solely a product of industrial activities. Chlorofluorocarbons  
15 (CFCs) and hydrochlorofluorocarbons (HCFCs) are halocarbons that contain chlorine, while halocarbons that  
16 contain bromine are referred to as bromofluorocarbons (i.e., halons). As stratospheric ozone depleting substances,  
17 CFCs, HCFCs, and halons are covered under the Montreal Protocol on Substances that Deplete the Ozone Layer.  
18 The UNFCCC defers to this earlier international treaty. Consequently, Parties to the UNFCCC are not required to  
19 include these gases in their national greenhouse gas emission inventories.<sup>5</sup> Some other fluorine-containing  
20 halogenated substances—hydrofluorocarbons (HFCs), perfluorocarbons (PFCs), and sulfur hexafluoride (SF<sub>6</sub>)—do  
21 not deplete stratospheric ozone but are potent greenhouse gases. These latter substances are addressed by the  
22 UNFCCC and accounted for in national greenhouse gas emission inventories.

23 There are also several gases that do not have a direct global warming effect but indirectly affect terrestrial and/or  
24 solar radiation absorption by influencing the formation or destruction of greenhouse gases, including tropospheric  
25 and stratospheric ozone. These gases include carbon monoxide (CO), oxides of nitrogen (NO<sub>x</sub>), and non-CH<sub>4</sub>  
26 volatile organic compounds (NMVOCs). Aerosols, which are extremely small particles or liquid droplets, such as  
27 those produced by sulfur dioxide (SO<sub>2</sub>) or elemental carbon emissions, can also affect the absorptive characteristics  
28 of the atmosphere.

29 Although the direct greenhouse gases CO<sub>2</sub>, CH<sub>4</sub>, and N<sub>2</sub>O occur naturally in the atmosphere, human activities have  
30 changed their atmospheric concentrations. From the pre-industrial era (i.e., ending about 1750) to 2005,  
31 concentrations of these greenhouse gases have increased globally by 36, 148, and 18 percent, respectively (IPCC  
32 2007).

33 Beginning in the 1950s, the use of CFCs and other stratospheric ozone depleting substances (ODS) increased by  
34 nearly 10 percent per year until the mid-1980s, when international concern about ozone depletion led to the entry  
35 into force of the Montreal Protocol. Since then, the production of ODS is being phased out. In recent years, use of  
36 ODS substitutes such as HFCs and PFCs has grown as they begin to be phased in as replacements for CFCs and  
37 HCFCs. Accordingly, atmospheric concentrations of these substitutes have been growing (IPCC 2007).

## 38 **Global Warming Potentials**

39 Gases in the atmosphere can contribute to the greenhouse effect both directly and indirectly. Direct effects occur  
40 when the gas itself absorbs radiation. Indirect radiative forcing occurs when chemical transformations of the  
41 substance produce other greenhouse gases, when a gas influences the atmospheric lifetimes of other gases, and/or  
42 when a gas affects atmospheric processes that alter the radiative balance of the earth (e.g., affect cloud formation or  
43 albedo).<sup>6</sup> The IPCC developed the Global Warming Potential (GWP) concept to compare the ability of each

---

<sup>5</sup> Emissions estimates of CFCs, HCFCs, halons and other ozone-depleting substances are included in the annexes of the Inventory report for informational purposes.

<sup>6</sup> Albedo is a measure of the Earth's reflectivity, and is defined as the fraction of the total solar radiation incident on a body that is reflected by it.

1 greenhouse gas to trap heat in the atmosphere relative to another gas.

2 The GWP of a greenhouse gas is defined as the ratio of the time-integrated radiative forcing from the instantaneous  
3 release of 1 kilogram (kg) of a trace substance relative to that of 1 kg of a reference gas (IPCC 2001). Direct  
4 radiative effects occur when the gas itself is a greenhouse gas. The reference gas used is CO<sub>2</sub>, and therefore GWP-  
5 weighted emissions are measured in teragrams (or million metric tons) of CO<sub>2</sub> equivalent (Tg CO<sub>2</sub> Eq.).<sup>7,8</sup> All gases  
6 in this Executive Summary are presented in units of Tg CO<sub>2</sub> Eq.

7 The UNFCCC reporting guidelines for national inventories were updated in 2006,<sup>9</sup> but continue to require the use of  
8 GWPs from the IPCC Second Assessment Report (SAR) (IPCC 1996). This requirement ensures that current  
9 estimates of aggregate greenhouse gas emissions for 1990 to 2008 are consistent with estimates developed prior to  
10 the publication of the IPCC Third Assessment Report (TAR) and the IPCC Fourth Assessment Report (AR4).  
11 Therefore, to comply with international reporting standards under the UNFCCC, official emission estimates are  
12 reported by the United States using SAR GWP values. All estimates are provided throughout the report in both CO<sub>2</sub>  
13 equivalents and unweighted units. A comparison of emission values using the SAR GWPs versus the TAR and AR4  
14 GWPs can be found in Chapter 1 and, in more detail, in Annex 6.1 of this report. The GWP values used in this  
15 report are listed below in Table ES-1.

16 **Table ES-1: Global Warming Potentials (100-Year Time Horizon) Used in this Report**

<b>Gas</b>	<b>GWP</b>
CO <sub>2</sub>	1
CH <sub>4</sub> *	21
N <sub>2</sub> O	310
HFC-23	11,700
HFC-32	650
HFC-125	2,800
HFC-134a	1,300
HFC-143a	3,800
HFC-152a	140
HFC-227ea	2,900
HFC-236fa	6,300
HFC-4310mee	1,300
CF <sub>4</sub>	6,500
C <sub>2</sub> F <sub>6</sub>	9,200
C <sub>4</sub> F <sub>10</sub>	7,000
C <sub>6</sub> F <sub>14</sub>	7,400
SF <sub>6</sub>	23,900

17 Source: IPCC (1996)

18 \* The CH<sub>4</sub> GWP includes the direct effects and those indirect effects due to the production of tropospheric ozone and  
19 stratospheric water vapor. The indirect effect due to the production of CO<sub>2</sub> is not included.  
20

21 Global warming potentials are not provided for CO, NO<sub>x</sub>, NMVOCs, SO<sub>2</sub>, and aerosols because there is no agreed-  
22 upon method to estimate the contribution of gases that are short-lived in the atmosphere, spatially variable, or have  
23 only indirect effects on radiative forcing (IPCC 1996).

## 24 **Recent Trends in U.S. Greenhouse Gas Emissions and Sinks**

25 In 2008, total U.S. greenhouse gas emissions were 6,946.1 Tg CO<sub>2</sub> Eq. Overall, total U.S. emissions have risen by  
26 14 percent from 1990 to 2008. Emissions declined from 2007 to 2008, decreasing by 2.9 percent (206.1 Tg CO<sub>2</sub>  
27 Eq.). This decrease is primarily a result of a decrease in demand for transportation fuels associated with the record  
28 high costs of these fuels that occurred in 2008. Additionally, electricity demand declined in 2008 in part due to a  
29 significant increase in the cost of fuels used to generate electricity. In 2008, temperatures were cooler in the United

---

<sup>7</sup> Carbon comprises 12/44<sup>ths</sup> of carbon dioxide by weight.

<sup>8</sup> One teragram is equal to 10<sup>12</sup> grams or one million metric tons.

<sup>9</sup> See <<http://unfccc.int/resource/docs/2006/sbsta/eng/09.pdf>>.

1 States than in 2007, both in the summer and the winter. This lead to an increase in heating related energy demand in  
 2 the winter, however, much of this increase was offset by a decrease in cooling related electricity demand in the  
 3 summer.

4 Figure ES-1 through Figure ES-3 illustrate the overall trends in total U.S. emissions by gas, annual changes, and  
 5 absolute change since 1990. Table ES-2 provides a detailed summary of U.S. greenhouse gas emissions and sinks  
 6 for 1990 through 2008.

7

8 Figure ES-1: U.S. Greenhouse Gas Emissions by Gas

9

10 Figure ES-2: Annual Percent Change in U.S. Greenhouse Gas Emissions

11

12 Figure ES-3: Cumulative Change in Annual U.S. Greenhouse Gas Emissions Relative to 1990

13

14 Table ES-2: Recent Trends in U.S. Greenhouse Gas Emissions and Sinks (Tg CO<sub>2</sub> Eq. or million metric tons CO<sub>2</sub>  
 15 Eq.)

<b>Gas/Source</b>	<b>1990</b>	<b>1995</b>	<b>2000</b>	<b>2005</b>	<b>2006</b>	<b>2007</b>	<b>2008</b>
<b>CO<sub>2</sub></b>	<b>5,090.0</b>	<b>5,417.3</b>	<b>5,965.3</b>	<b>6,089.0</b>	<b>6,001.9</b>	<b>6,103.0</b>	<b>5,905.5</b>
Fossil Fuel Combustion	4,718.9	5,016.9	5,575.7	5,728.6	5,631.8	5,736.5	5,552.3
Electricity Generation	1,804.6	1,935.8	2,279.5	2,377.3	2,325.7	2,391.3	2,342.0
Transportation	1,485.8	1,608.0	1,809.5	1,895.4	1,876.7	1,893.8	1,785.3
Industrial	844.5	861.9	851.8	825.2	850.1	842.8	819.8
Residential	339.4	353.4	371.3	358.7	322.2	342.0	343.0
Commercial	216.7	223.2	227.7	221.4	206.1	217.5	219.7
U.S. Territories	27.9	34.5	35.9	50.6	50.9	49.1	42.5
Non-Energy Use of Fuels	118.4	138.2	145.0	136.4	141.6	135.5	132.9
Iron and Steel Production & Metallurgical Coke Production	109.8	103.1	95.1	73.2	76.1	77.4	74.5
Cement Production	33.3	36.8	41.2	45.9	46.6	45.2	41.1
Natural Gas Systems	37.3	42.2	29.4	29.5	29.5	30.8	30.0
Lime Production	11.5	13.3	14.1	14.4	15.1	14.6	14.3
Incineration of Waste	8.0	11.5	11.3	12.6	12.7	13.3	13.1
Ammonia Production and Urea Consumption	16.8	17.8	16.4	12.8	12.3	14.0	11.8
Cropland Remaining Cropland	7.1	7.0	7.5	7.9	7.9	8.3	7.6
Limestone and Dolomite Use	5.1	6.7	5.1	6.8	8.0	6.2	7.1
Aluminum Production	6.8	5.7	6.1	4.1	3.8	4.3	4.5
Soda Ash Production and Consumption	4.1	4.3	4.2	4.2	4.2	4.1	4.1
Petrochemical Production	3.3	4.1	4.5	4.2	3.8	3.9	3.4
Titanium Dioxide Production	1.2	1.5	1.8	1.8	1.8	1.9	1.8
Carbon Dioxide Consumption	1.4	1.4	1.4	1.3	1.7	1.9	1.8
Ferroalloy Production	2.2	2.0	1.9	1.4	1.5	1.6	1.6
Phosphoric Acid Production	1.5	1.5	1.4	1.4	1.2	1.2	1.2
Wetlands Remaining Wetlands	1.0	1.0	1.2	1.1	0.9	1.0	0.9
Petroleum Systems	0.6	0.5	0.5	0.5	0.5	0.5	0.5
Zinc Production	0.9	1.0	1.1	0.5	0.5	0.4	0.4
Lead Production	0.3	0.3	0.3	0.3	0.3	0.3	0.3
Silicon Carbide Production and Consumption	0.4	0.3	0.2	0.2	0.2	0.2	0.2
<i>Land Use, Land-Use Change,</i>	<i>(909.4)</i>	<i>(842.9)</i>	<i>(664.2)</i>	<i>(950.4)</i>	<i>(959.2)</i>	<i>(955.4)</i>	<i>(940.3)</i>

<i>and Forestry (Sink)<sup>a</sup></i>							
Biomass - Wood	215.2	229.1	218.1	206.9	207.9	207.4	198.4
International Bunker Fuels <sup>b</sup>	111.8	99.8	98.5	110.5	129.1	127.1	135.2
Biomass - Ethanol	4.2	7.7	9.2	22.6	30.5	38.3	53.3
<b>CH<sub>4</sub></b>	<b>613.4</b>	<b>613.2</b>	<b>586.1</b>	<b>553.2</b>	<b>568.2</b>	<b>569.2</b>	<b>567.3</b>
Enteric Fermentation	132.4	143.7	136.8	136.7	139.0	141.2	140.8
Landfills	149.3	144.1	120.7	125.6	127.1	126.5	126.3
Natural Gas Systems	129.5	132.6	130.7	103.6	103.1	99.5	96.4
Coal Mining	84.1	67.1	60.5	56.9	58.3	58.1	67.3
Manure Management	29.3	33.9	38.6	42.2	42.3	45.9	45.0
Petroleum Systems	33.9	32.0	30.2	28.2	28.2	28.8	29.1
Wastewater Treatment	23.5	24.8	25.2	24.3	24.5	24.4	24.3
Forest Land Remaining Forest							
Land	3.2	4.3	14.3	9.8	21.6	20.0	11.9
Rice Cultivation	7.1	7.6	7.5	6.8	5.9	6.2	7.2
Stationary Combustion	7.4	7.1	6.6	6.6	6.2	6.5	6.7
Abandoned Underground Coal							
Mines	6.0	8.2	7.4	5.6	5.5	5.7	5.9
Mobile Combustion	4.7	4.3	3.4	2.5	2.3	2.2	2.0
Composting	0.3	0.7	1.3	1.6	1.6	1.7	1.7
Field Burning of Agricultural							
Residues	0.8	0.7	0.9	0.9	0.9	1.0	1.0
Petrochemical Production	0.9	1.1	1.2	1.1	1.0	1.0	0.9
Iron and Steel Production &							
Metallurgical Coke							
Production	1.0	1.0	0.9	0.7	0.7	0.7	0.6
Ferroalloy Production	+	+	+	+	+	+	+
Silicon Carbide Production and							
Consumption	+	+	+	+	+	+	+
Incineration of Waste	+	+	+	+	+	+	+
International Bunker Fuels <sup>b</sup>	0.2	0.1	0.1	0.1	0.2	0.2	0.2
<b>N<sub>2</sub>O</b>	<b>322.7</b>	<b>343.2</b>	<b>346.5</b>	<b>329.4</b>	<b>330.4</b>	<b>328.7</b>	<b>319.1</b>
Agricultural Soil Management	203.5	205.9	210.1	215.8	211.2	211.0	215.9
Mobile Combustion	43.9	54.0	53.2	36.9	33.6	30.3	26.1
Nitric Acid Production	19.8	22.0	21.7	18.4	18.1	21.5	19.9
Manure Management	14.4	15.5	16.7	16.6	17.3	17.3	17.1
Stationary Combustion	12.8	13.3	14.5	14.7	14.5	14.6	14.2
Forest Land Remaining Forest							
Land	2.7	3.7	12.1	8.4	18.0	16.7	10.1
Wastewater Treatment	3.7	4.0	4.5	4.7	4.8	4.9	4.9
N <sub>2</sub> O from Product Uses	4.4	4.6	4.9	4.4	4.4	4.4	4.4
Adipic Acid Production	15.3	17.3	5.5	5.2	4.3	3.7	2.0
Composting	0.4	0.8	1.4	1.7	1.8	1.8	1.8
Settlements Remaining							
Settlements	1.0	1.2	1.1	1.5	1.5	1.6	1.6
Field Burning of Agricultural							
Residues	0.4	0.4	0.5	0.5	0.5	0.5	0.5
Incineration of Waste	0.5	0.5	0.4	0.4	0.4	0.4	0.4
Wetlands Remaining Wetlands	+	+	+	+	+	+	+
International Bunker Fuels <sup>b</sup>	1.1	0.9	0.9	1.0	1.2	1.2	1.2
<b>HFCs</b>	<b>36.9</b>	<b>62.2</b>	<b>103.2</b>	<b>119.3</b>	<b>121.8</b>	<b>127.4</b>	<b>130.2</b>
Substitution of Ozone							
Depleting Substances <sup>c</sup>	0.3	29.0	74.3	103.2	107.7	110.1	113.0
HCFC-22 Production	36.4	33.0	28.6	15.8	13.8	17.0	17.0
Semiconductor Manufacture	0.2	0.3	0.3	0.2	0.3	0.3	0.3
<b>PFCs</b>	<b>20.8</b>	<b>15.6</b>	<b>13.5</b>	<b>6.2</b>	<b>6.0</b>	<b>7.5</b>	<b>7.5</b>

Aluminum Production	18.5	11.8	8.6	3.0	2.5	3.8	3.8
Semiconductor Manufacture	2.2	3.8	4.9	3.2	3.5	3.6	3.6
<b>SF<sub>6</sub></b>	<b>32.8</b>	<b>28.1</b>	<b>19.2</b>	<b>17.9</b>	<b>17.0</b>	<b>16.5</b>	<b>16.5</b>
Electrical Transmission and Distribution	26.8	21.6	15.1	14.0	13.2	12.7	12.7
Magnesium Production and Processing	5.4	5.6	3.0	2.9	2.9	3.0	3.0
Semiconductor Manufacture	0.5	0.9	1.1	1.0	1.0	0.8	0.8
<b>Total</b>	<b>6,116.6</b>	<b>6,479.7</b>	<b>7,033.7</b>	<b>7,114.9</b>	<b>7,045.4</b>	<b>7,152.1</b>	<b>6,946.1</b>
<b>Net Emissions (Sources and Sinks)</b>	<b>5,207.2</b>	<b>5,636.9</b>	<b>6,369.5</b>	<b>6,164.5</b>	<b>6,086.3</b>	<b>6,196.7</b>	<b>6,005.7</b>

1 + Does not exceed 0.05 Tg CO<sub>2</sub> Eq.

2 <sup>a</sup> Parentheses indicate negative values or sequestration. The net CO<sub>2</sub> flux total includes both emissions and sequestration, and  
3 constitutes a sink in the United States. Sinks are only included in net emissions total.

4 <sup>b</sup> Emissions from International Bunker Fuels and Biomass Combustion are not included in totals.

5 <sup>c</sup> Small amounts of PFC emissions also result from this source.

6 Note: Totals may not sum due to independent rounding.

7 Note: One teragram (Tg) equals one million metric tons.

8  
9 Figure ES-4 illustrates the relative contribution of the direct greenhouse gases to total U.S. emissions in 2008. The  
10 primary greenhouse gas emitted by human activities in the United States was CO<sub>2</sub>, representing approximately 85.0  
11 percent of total greenhouse gas emissions. The largest source of CO<sub>2</sub>, and of overall greenhouse gas emissions, was  
12 fossil fuel combustion. CH<sub>4</sub> emissions, which have declined by 7.5 percent since 1990, resulted primarily from  
13 enteric fermentation associated with domestic livestock, decomposition of wastes in landfills, and natural gas  
14 systems. Agricultural soil management and mobile source fuel combustion were the major sources of N<sub>2</sub>O  
15 emissions. Ozone depleting substance substitute emissions and emissions of HFC-23 during the production of  
16 HCFC-22 were the primary contributors to aggregate HFC emissions. PFC emissions resulted as a by-product of  
17 primary aluminum production and from semiconductor manufacturing, while electrical transmission and distribution  
18 systems accounted for most SF<sub>6</sub> emissions.

19  
20 Figure ES-4: 2008 Greenhouse Gas Emissions by Gas (percents based on Tg CO<sub>2</sub> Eq.)

21  
22 Overall, from 1990 to 2008 total emissions of CO<sub>2</sub> increased by 815.4 Tg CO<sub>2</sub> Eq. (16.0 percent), while CH<sub>4</sub> and  
23 N<sub>2</sub>O emissions decreased by 46.1 Tg CO<sub>2</sub> Eq. (7.5 percent) and 3.6 Tg CO<sub>2</sub> Eq. (1.1 percent), respectively. During  
24 the same period, aggregate weighted emissions of HFCs, PFCs, and SF<sub>6</sub> rose by 63.7 Tg CO<sub>2</sub> Eq. (70.4 percent).  
25 From 1990 to 2008, HFCs increased by 93.3 Tg CO<sub>2</sub> Eq. (252.7 percent), PFCs decreased by 13.3 Tg CO<sub>2</sub> Eq. (64.0  
26 percent), and SF<sub>6</sub> decreased by 16.3 Tg CO<sub>2</sub> Eq. (49.8 percent). Despite being emitted in smaller quantities relative  
27 to the other principal greenhouse gases, emissions of HFCs, PFCs, and SF<sub>6</sub> are significant because many of these  
28 gases have extremely high global warming potentials and, in the cases of PFCs and SF<sub>6</sub>, long atmospheric lifetimes.  
29 Conversely, U.S. greenhouse gas emissions were partly offset by carbon sequestration in forests, trees in urban  
30 areas, agricultural soils, and landfilled yard trimmings and food scraps, which, in aggregate, offset 13.5 percent of  
31 total emissions in 2008. The following sections describe each gas' contribution to total U.S. greenhouse gas  
32 emissions in more detail.

### 33 Carbon Dioxide Emissions

34 The global carbon cycle is made up of large carbon flows and reservoirs. Billions of tons of carbon in the form of  
35 CO<sub>2</sub> are absorbed by oceans and living biomass (i.e., sinks) and are emitted to the atmosphere annually through  
36 natural processes (i.e., sources). When in equilibrium, carbon fluxes among these various reservoirs are roughly  
37 balanced. Since the Industrial Revolution (i.e., about 1750), global atmospheric concentrations of CO<sub>2</sub> have risen  
38 about 36 percent (IPCC 2007), principally due to the combustion of fossil fuels. Within the United States, fossil fuel  
39 combustion accounted for 94.0 percent of CO<sub>2</sub> emissions in 2008. Globally, approximately 30,377 Tg of CO<sub>2</sub> were

1 added to the atmosphere through the combustion of fossil fuels in 2008, of which the United States accounted for  
 2 about 19 percent.<sup>10</sup> Changes in land use and forestry practices can also emit CO<sub>2</sub> (e.g., through conversion of forest  
 3 land to agricultural or urban use) or can act as a sink for CO<sub>2</sub> (e.g., through net additions to forest biomass). In  
 4 addition to fossil-fuel combustion, several other sources emit significant quantities of CO<sub>2</sub>. These sources include,  
 5 but are not limited to non-energy use of fuels, iron and steel production and cement production (Figure ES-5).

7 Figure ES- 5: 2008 Sources of CO<sub>2</sub> Emissions

9 As the largest source of U.S. greenhouse gas emissions, CO<sub>2</sub> from fossil fuel combustion has accounted for  
 10 approximately 79 percent of GWP-weighted emissions since 1990, growing slowly from 77 percent of total GWP-  
 11 weighted emissions in 1990 to 80 percent in 2008. Emissions of CO<sub>2</sub> from fossil fuel combustion increased at an  
 12 average annual rate of 1 percent from 1990 to 2008. The fundamental factors influencing this trend include (1) a  
 13 generally growing domestic economy over the last 18 years, and (2) significant overall growth in emissions from  
 14 electricity generation and transportation activities. Between 1990 and 2008, CO<sub>2</sub> emissions from fossil fuel  
 15 combustion increased from 4,718.9 Tg CO<sub>2</sub> Eq. to 5,552.3 Tg CO<sub>2</sub> Eq.—an 18 percent total increase over the  
 16 eighteen-year period. From 2007 to 2008, these emissions decreased by 184.2 Tg CO<sub>2</sub> Eq. (3.2 percent).

17 Historically, changes in emissions from fossil fuel combustion have been the dominant factor affecting U.S.  
 18 emission trends. Changes in CO<sub>2</sub> emissions from fossil fuel combustion are influenced by many long-term and  
 19 short-term factors, including population and economic growth, energy price fluctuations, technological changes, and  
 20 seasonal temperatures. On an annual basis, the overall consumption of fossil fuels in the United States generally  
 21 fluctuates in response to changes in general economic conditions, energy prices, weather, and the availability of non-  
 22 fossil alternatives. For example, in a year with increased consumption of goods and services, low fuel prices, severe  
 23 summer and winter weather conditions, nuclear plant closures, and lower precipitation feeding hydroelectric dams,  
 24 there would likely be proportionally greater fossil fuel consumption than a year with poor economic performance,  
 25 high fuel prices, mild temperatures, and increased output from nuclear and hydroelectric plants.

27 Figure ES- 6: 2008 CO<sub>2</sub> Emissions from Fossil Fuel Combustion by Sector and Fuel Type

29 Figure ES- 7: 2008 End-Use Sector Emissions of CO<sub>2</sub>, CH<sub>4</sub>, and N<sub>2</sub>O from Fossil Fuel Combustion

31 The five major fuel consuming sectors contributing to CO<sub>2</sub> emissions from fossil fuel combustion are electricity  
 32 generation, transportation, industrial, residential, and commercial. CO<sub>2</sub> emissions are produced by the electricity  
 33 generation sector as they consume fossil fuel to provide electricity to one of the other four sectors, or “end-use”  
 34 sectors. For the discussion below, electricity generation emissions have been distributed to each end-use sector on  
 35 the basis of each sector’s share of aggregate electricity consumption. This method of distributing emissions assumes  
 36 that each end-use sector consumes electricity that is generated from the national average mix of fuels according to  
 37 their carbon intensity. Emissions from electricity generation are also addressed separately after the end-use sectors  
 38 have been discussed.

39 Note that emissions from U.S. territories are calculated separately due to a lack of specific consumption data for the  
 40 individual end-use sectors.

41 Figure ES- 6, Figure ES- 7, and Table ES-3 summarize CO<sub>2</sub> emissions from fossil fuel combustion by end-use  
 42 sector.

43 Table ES-3: CO<sub>2</sub> Emissions from Fossil Fuel Combustion by Fuel Consuming End-Use Sector (Tg CO<sub>2</sub> Eq.)

<b>End-Use Sector</b>	<b>1990</b>	<b>1995</b>	<b>2000</b>	<b>2005</b>	<b>2006</b>	<b>2007</b>	<b>2008</b>
-----------------------	-------------	-------------	-------------	-------------	-------------	-------------	-------------

<sup>10</sup> Global CO<sub>2</sub> emissions from fossil fuel combustion were taken from Energy Information Administration *International Energy Statistics 2009* < <http://tonto.eia.doe.gov/cfapps/ipdbproject/IEDIndex3.cfm> > EIA (2009).

<b>Transportation</b>	<b>1,488.8</b>	<b>1,611.0</b>	<b>1,813.0</b>	<b>1,900.0</b>	<b>1,881.2</b>	<b>1,898.8</b>	<b>1,789.9</b>
Combustion	1,485.8	1,608.0	1,809.5	1,895.4	1,876.7	1,893.8	1,785.3
Electricity	3.0	3.0	3.4	4.7	4.5	5.0	4.6
<b>Industrial</b>	<b>1,525.2</b>	<b>1,573.7</b>	<b>1,635.6</b>	<b>1,554.6</b>	<b>1,555.9</b>	<b>1,566.2</b>	<b>1,505.1</b>
Combustion	844.5	861.9	851.8	825.2	850.1	842.8	819.8
Electricity	680.6	711.8	783.8	729.3	705.7	723.4	685.3
<b>Residential</b>	<b>927.2</b>	<b>991.3</b>	<b>1,127.9</b>	<b>1,206.6</b>	<b>1,145.7</b>	<b>1,190.5</b>	<b>1,177.1</b>
Combustion	339.4	353.4	371.3	358.7	322.2	342.0	343.0
Electricity	587.7	637.8	756.6	847.9	823.5	848.5	834.1
<b>Commercial</b>	<b>749.9</b>	<b>806.4</b>	<b>963.4</b>	<b>1,016.8</b>	<b>998.0</b>	<b>1,031.9</b>	<b>1,037.6</b>
Combustion	216.7	223.2	227.7	221.4	206.1	217.5	219.7
Electricity	533.2	583.1	735.6	795.4	792.0	814.4	817.9
<b>U.S. Territories<sup>a</sup></b>	<b>27.9</b>	<b>34.5</b>	<b>35.9</b>	<b>50.6</b>	<b>50.9</b>	<b>49.1</b>	<b>42.5</b>
<b>Total</b>	<b>4,718.9</b>	<b>5,016.9</b>	<b>5,575.7</b>	<b>5,728.6</b>	<b>5,631.8</b>	<b>5,736.5</b>	<b>5,552.3</b>
<b>Electricity Generation</b>	<b>1,804.6</b>	<b>1,935.8</b>	<b>2,279.5</b>	<b>2,377.3</b>	<b>2,325.7</b>	<b>2,391.3</b>	<b>2,342.0</b>

Note: Totals may not sum due to independent rounding. Combustion-related emissions from electricity generation are allocated based on aggregate national electricity consumption by each end-use sector.

<sup>a</sup> Fuel consumption by U.S. territories (i.e., American Samoa, Guam, Puerto Rico, U.S. Virgin Islands, Wake Island, and other U.S. Pacific Islands) is included in this report.

*Transportation End-Use Sector.* Transportation activities (excluding international bunker fuels) accounted for 32 percent of CO<sub>2</sub> emissions from fossil fuel combustion in 2008.<sup>11</sup> Virtually all of the energy consumed in this end-use sector came from petroleum products. Nearly 60 percent of the emissions resulted from gasoline consumption for personal vehicle use. The remaining emissions came from other transportation activities, including the combustion of diesel fuel in heavy-duty vehicles and jet fuel in aircraft.

*Industrial End-Use Sector.* Industrial CO<sub>2</sub> emissions, resulting both directly from the combustion of fossil fuels and indirectly from the generation of electricity that is consumed by industry, accounted for 27 percent of CO<sub>2</sub> from fossil fuel combustion in 2008. Approximately 54 percent of these emissions resulted from direct fossil fuel combustion to produce steam and/or heat for industrial processes. The remaining emissions resulted from consuming electricity for motors, electric furnaces, ovens, lighting, and other applications.

*Residential and Commercial End-Use Sectors.* The residential and commercial end-use sectors accounted for 21 and 19 percent, respectively, of CO<sub>2</sub> emissions from fossil fuel combustion in 2008. Both sectors relied heavily on electricity for meeting energy demands, with 71 and 79 percent, respectively, of their emissions attributable to electricity consumption for lighting, heating, cooling, and operating appliances. The remaining emissions were due to the consumption of natural gas and petroleum for heating and cooking.

*Electricity Generation.* The United States relies on electricity to meet a significant portion of its energy demands, especially for lighting, electric motors, heating, and air conditioning. Electricity generators consumed 37 percent of U.S. energy from fossil fuels and emitted 42 percent of the CO<sub>2</sub> from fossil fuel combustion in 2008. The type of fuel combusted by electricity generators has a significant effect on their emissions. For example, some electricity is generated with low CO<sub>2</sub> emitting energy technologies, particularly non-fossil options such as nuclear, hydroelectric, or geothermal energy. However, electricity generators rely on coal for over half of their total energy requirements and accounted for 94 percent of all coal consumed for energy in the United States in 2008. Consequently, changes in electricity demand have a significant impact on coal consumption and associated CO<sub>2</sub> emissions.

Other significant CO<sub>2</sub> trends included the following:

- CO<sub>2</sub> emissions from non-energy use of fossil fuels have increased 14.5 Tg CO<sub>2</sub> Eq. (12.3 percent) from 1990 through 2008. Emissions from non-energy uses of fossil fuels were 132.9 Tg CO<sub>2</sub> Eq. in 2008, which constituted 2.3 percent of total national CO<sub>2</sub> emissions, approximately the same proportion as in 1990.
- CO<sub>2</sub> emissions from iron and steel production and metallurgical coke production decreased from 2007 to

<sup>11</sup> If emissions from international bunker fuels are included, the transportation end-use sector accounted for 35 percent of U.S. emissions from fossil fuel combustion in 2008.



1 2008 (2.9 Tg CO<sub>2</sub> Eq.), continuing a trend of decreasing emissions from 1990 through 2008 of 32 percent.  
2 This decline is due to the restructuring of the industry, technological improvements, and increased scrap  
3 utilization.

- 4 • In 2008, CO<sub>2</sub> emissions from cement production decreased by 4.1 Tg CO<sub>2</sub> Eq. (9.0 percent) from 2007.  
5 After decreasing in 1991 by two percent from 1990 levels, cement production emissions grew every year  
6 through 2006; emissions decreased in the last two years. Overall, from 1990 to 2008, emissions from  
7 cement production increased by 24 percent, an increase of 7.9 Tg CO<sub>2</sub> Eq.
- 8 • Net CO<sub>2</sub> flux from Land Use, Land-Use Change, and Forestry increased by 30.9 Tg CO<sub>2</sub> Eq. (3 percent)  
9 from 1990 through 2008. This increase was primarily due to an increase in the rate of net carbon  
10 accumulation in forest carbon stocks, particularly in aboveground and belowground tree biomass, and  
11 harvested wood pools. Annual carbon accumulation in landfilled yard trimmings and food scraps slowed  
12 over this period, while the rate of carbon accumulation in urban trees increased.

### 13 Methane Emissions

14 According to the IPCC, CH<sub>4</sub> is more than 20 times as effective as CO<sub>2</sub> at trapping heat in the atmosphere. Over the  
15 last two hundred and fifty years, the concentration of CH<sub>4</sub> in the atmosphere increased by 148 percent (IPCC 2007).  
16 Anthropogenic sources of CH<sub>4</sub> include landfills, natural gas and petroleum systems, agricultural activities, coal  
17 mining, wastewater treatment, stationary and mobile combustion, and certain industrial processes (see Figure ES- 8).

18  
19 Figure ES- 8: 2008 Sources of CH<sub>4</sub> Emissions

20  
21 Some significant trends in U.S. emissions of CH<sub>4</sub> include the following:

- 22 • Enteric Fermentation is the largest anthropogenic source of CH<sub>4</sub> emissions in the United States. In 2008,  
23 enteric fermentation CH<sub>4</sub> emissions were 140.8 Tg CO<sub>2</sub> Eq. (25 percent of total CH<sub>4</sub> emissions), which  
24 represents an increase of 8.5 Tg CO<sub>2</sub> Eq. (6.4 percent) since 1990.
- 25 • Landfills are the second largest anthropogenic source of CH<sub>4</sub> emissions in the United States, accounting for  
26 22 percent of total CH<sub>4</sub> emissions (126.3 Tg CO<sub>2</sub> Eq.) in 2008. From 1990 to 2008, net CH<sub>4</sub> emissions  
27 from landfills decreased by 23.0 Tg CO<sub>2</sub> Eq. (15 percent), with small increases occurring in some interim  
28 years. This downward trend in overall emissions is the result of increases in the amount of landfill gas  
29 collected and combusted,<sup>12</sup> which has more than offset the additional CH<sub>4</sub> emissions resulting from an  
30 increase in the amount of municipal solid waste landfilled.
- 31 • CH<sub>4</sub> emissions from natural gas systems were 96.4 Tg CO<sub>2</sub> Eq. in 2008; emissions have declined by 33.1  
32 Tg CO<sub>2</sub> Eq. (26 percent) since 1990. This decline is due to improvements in technology and management  
33 practices, as well as some replacement of old equipment.
- 34 • In 2008, CH<sub>4</sub> emissions from coal mining were 67.3 Tg CO<sub>2</sub> Eq., a 9.2 Tg CO<sub>2</sub> Eq. (16 percent) increase  
35 over 2007 emission levels. The overall decline of 16.7 Tg CO<sub>2</sub> Eq. (20 percent) from 1990 results from the  
36 mining of less gassy coal from underground mines and the increased use of CH<sub>4</sub> collected from  
37 degasification systems.
- 38 • CH<sub>4</sub> emissions from manure management increased by 54 percent since 1990, from 29.3 Tg CO<sub>2</sub> Eq. in  
39 1990 to 45.0 Tg CO<sub>2</sub> Eq. in 2008. The majority of this increase was from swine and dairy cow manure,  
40 since the general trend in manure management is one of increasing use of liquid systems, which tends to  
41 produce greater CH<sub>4</sub> emissions. The increase in liquid systems is the combined result of a shift to larger  
42 facilities, and to facilities in the West and Southwest, all of which tend to use liquid systems. Also, new  
43 regulations limiting the application of manure nutrients have shifted manure management practices at  
44 smaller dairies from daily spread to manure managed and stored on site.

---

<sup>12</sup> The CO<sub>2</sub> produced from combusted landfill CH<sub>4</sub> at landfills is not counted in national inventories as it is considered part of the natural C cycle of decomposition.

## 1 Nitrous Oxide Emissions

2 N<sub>2</sub>O is produced by biological processes that occur in soil and water and by a variety of anthropogenic activities in  
3 the agricultural, energy-related, industrial, and waste management fields. While total N<sub>2</sub>O emissions are much  
4 lower than CO<sub>2</sub> emissions, N<sub>2</sub>O is approximately 300 times more powerful than CO<sub>2</sub> at trapping heat in the  
5 atmosphere. Since 1750, the global atmospheric concentration of N<sub>2</sub>O has risen by approximately 18 percent (IPCC  
6 2007). The main anthropogenic activities producing N<sub>2</sub>O in the United States are agricultural soil management, fuel  
7 combustion in motor vehicles, nitric acid production, stationary fuel combustion, manure management, and adipic  
8 acid production (see Figure ES-9).

10 Figure ES-9: 2008 Sources of N<sub>2</sub>O Emissions

12 Some significant trends in U.S. emissions of N<sub>2</sub>O include the following:

- 13 • Agricultural soils accounted for approximately 68 percent of N<sub>2</sub>O emissions in the United States in 2008.  
14 Estimated emissions from this source in 2008 were 215.9 Tg CO<sub>2</sub> Eq. Annual N<sub>2</sub>O emissions from  
15 agricultural soils fluctuated between 1990 and 2008, although overall emissions were 6.1 percent higher in  
16 2008 than in 1990. N<sub>2</sub>O emissions from this source have not shown any significant long-term trend, as  
17 they are highly sensitive to the amount of N applied to soils (which has not changed significantly over the  
18 time-period), and to weather patterns and crop type.
- 19 • In 2008, N<sub>2</sub>O emissions from mobile combustion were 26.1 Tg CO<sub>2</sub> Eq. (approximately 8 percent of U.S.  
20 N<sub>2</sub>O emissions). From 1990 to 2008, N<sub>2</sub>O emissions from mobile combustion decreased by 40 percent.  
21 However, from 1990 to 1998 emissions increased by 26 percent, due to control technologies that reduced  
22 NO<sub>x</sub> emissions while increasing N<sub>2</sub>O emissions. Since 1998, newer control technologies have led to a  
23 steady decline in N<sub>2</sub>O from this source.
- 24 • N<sub>2</sub>O emissions from adipic acid production were 2.0 Tg CO<sub>2</sub> Eq. in 2008, and have decreased significantly  
25 since 1996 from the widespread installation of pollution control measures. Emissions from adipic acid  
26 production have decreased by 87 percent since 1990, and emissions from adipic acid production have  
27 remained consistently lower than pre-1996 levels since 1998.

## 28 HFC, PFC, and SF<sub>6</sub> Emissions

29 HFCs and PFCs are families of synthetic chemicals that are used as alternatives to ODS, which are being phased out  
30 under the Montreal Protocol and Clean Air Act Amendments of 1990. HFCs and PFCs do not deplete the  
31 stratospheric ozone layer, and are therefore acceptable alternatives under the Montreal Protocol.

32 These compounds, however, along with SF<sub>6</sub>, are potent greenhouse gases. In addition to having high global  
33 warming potentials, SF<sub>6</sub> and PFCs have extremely long atmospheric lifetimes, resulting in their essentially  
34 irreversible accumulation in the atmosphere once emitted. Sulfur hexafluoride is the most potent greenhouse gas the  
35 IPCC has evaluated.

36 Other emissive sources of these gases include HCFC-22 production, electrical transmission and distribution systems,  
37 semiconductor manufacturing, aluminum production, and magnesium production and processing (see Figure ES-10).

39 Figure ES-10: 2008 Sources of HFCs, PFCs, and SF<sub>6</sub> Emissions

41 Some significant trends in U.S. HFC, PFC, and SF<sub>6</sub> emissions include the following:

- 42 • Emissions resulting from the substitution of ODS (e.g., CFCs) have been consistently increasing, from  
43 small amounts in 1990 to 113.0 Tg CO<sub>2</sub> Eq. in 2008. Emissions from ODS substitutes are both the largest  
44 and the fastest growing source of HFC, PFC, and SF<sub>6</sub> emissions. These emissions have been increasing as  
45 phase-outs required under the Montreal Protocol come into effect, especially after 1994, when full market  
46 penetration was made for the first generation of new technologies featuring ODS substitutes.

- HFC emissions from the production of HCFC-22 decreased by 53 percent (19.4 Tg CO<sub>2</sub> Eq.) from 1990 through 2008, due to a steady decline in the emission rate of HFC-23 (i.e., the amount of HFC-23 emitted per kilogram of HCFC-22 manufactured) and the use of thermal oxidation at some plants to reduce HFC-23 emissions.
- SF<sub>6</sub> emissions from electric power transmission and distribution systems decreased by 53 percent (14.1 Tg CO<sub>2</sub> Eq.) from 1990 to 2008, primarily because of higher purchase prices for SF<sub>6</sub> and efforts by industry to reduce emissions.
- PFC emissions from aluminum production decreased by 79 percent (14.7 Tg CO<sub>2</sub> Eq.) from 1990 to 2008, due to both industry emission reduction efforts and lower domestic aluminum production.

## Overview of Sector Emissions and Trends

In accordance with the Revised 1996 IPCC Guidelines for National Greenhouse Gas Inventories (IPCC/UNEP/OECD/IEA 1997), and the 2003 UNFCCC Guidelines on Reporting and Review (UNFCCC 2003), Figure ES-11 and Table ES-4 aggregate emissions and sinks by these chapters. Emissions of all gases can be summed from each source category from Intergovernmental Panel on Climate Change (IPCC) guidance. Over the eighteen-year period of 1990 to 2008, total emissions in the Energy, Industrial Processes, and Agriculture sectors climbed by 770.9 Tg CO<sub>2</sub> Eq. (15 percent), 19.7 Tg CO<sub>2</sub> Eq. (6 percent), and 39.7 Tg CO<sub>2</sub> Eq. (10 percent), respectively. Emissions decreased in the Waste and Solvent and Other Product Use sectors by 18.1 Tg CO<sub>2</sub> Eq. (10 percent) and less than 0.1 Tg CO<sub>2</sub> Eq. (0.4 percent), respectively. Over the same period, estimates of net C sequestration in the Land Use, Land-Use Change, and Forestry sector (magnitude of emissions plus CO<sub>2</sub> flux from all LULUCF source categories) increased by 13.7 Tg CO<sub>2</sub> Eq. (1.5 percent).

Figure ES-11: U.S. Greenhouse Gas Emissions and Sinks by Chapter/IPCC Sector

Table ES-4: Recent Trends in U.S. Greenhouse Gas Emissions and Sinks by Chapter/IPCC Sector (Tg CO<sub>2</sub> Eq.)

Chapter/IPCC Sector	1990	1995	2000	2005	2006	2007	2008
Energy	5,206.1	5,528.4	6,068.8	6,163.0	6,068.2	6,162.6	5,977.0
Industrial Processes	326.1	347.3	359.9	341.3	346.1	355.3	345.8
Solvent and Other Product Use	4.4	4.6	4.9	4.4	4.4	4.4	4.4
Agriculture	387.8	407.7	410.9	419.7	417.2	423.0	427.5
Land Use, Land-Use Change, and Forestry (Emissions)	15.0	17.2	36.3	28.6	49.8	47.6	32.2
Waste	177.2	174.5	153.0	158.0	159.7	159.3	159.1
<b>Total Emissions</b>	<b>6,116.6</b>	<b>6,479.7</b>	<b>7,033.7</b>	<b>7,114.9</b>	<b>7,045.4</b>	<b>7,152.1</b>	<b>6,946.1</b>
Net CO <sub>2</sub> Flux from Land Use, Land-Use Change, and Forestry (Sinks)*	(909.4)	(842.9)	(664.2)	(950.4)	(959.2)	(955.4)	(940.3)
<b>Net Emissions (Sources and Sinks)</b>	<b>5,207.2</b>	<b>5,636.9</b>	<b>6,369.5</b>	<b>6,164.5</b>	<b>6,086.3</b>	<b>6,196.7</b>	<b>6,005.7</b>

\* The net CO<sub>2</sub> flux total includes both emissions and sequestration, and constitutes a sink in the United States. Sinks are only included in net emissions total.

Note: Totals may not sum due to independent rounding. Parentheses indicate negative values or sequestration.

## Energy

The Energy chapter contains emissions of all greenhouse gases resulting from stationary and mobile energy activities including fuel combustion and fugitive fuel emissions. Energy-related activities, primarily fossil fuel combustion, accounted for the vast majority of U.S. CO<sub>2</sub> emissions for the period of 1990 through 2008. In 2008, approximately 80 percent of the energy consumed in the United States (on a Btu basis) was produced through the combustion of fossil fuels. The remaining 20 percent came from other energy sources such as hydropower, biomass, nuclear, wind, and solar energy (see Figure ES-12). Energy-related activities are also responsible for CH<sub>4</sub> and N<sub>2</sub>O emissions (37 percent and 13 percent of total U.S. emissions of each gas, respectively). Overall, emission sources in the Energy chapter account for a combined 86 percent of total U.S. greenhouse gas emissions in 2008.

1  
2  
3  
4  
5  
6  
7  
8  
9  
10  
11  
12  
13  
14  
15  
16  
17  
18  
19  
20  
21  
22  
23  
24  
25  
26  
27  
28  
29  
30  
31  
32  
33  
34  
35  
36  
37  
38  
39  
40  
41  
42  
43  
44  
45  
46  
47

Figure ES-12: 2008 U.S. Energy Consumption by Energy Source

## Industrial Processes

The Industrial Processes chapter contains by-product or fugitive emissions of greenhouse gases from industrial processes not directly related to energy activities such as fossil fuel combustion. For example, industrial processes can chemically transform raw materials, which often release waste gases such as CO<sub>2</sub>, CH<sub>4</sub>, and N<sub>2</sub>O. These processes include iron and steel production and metallurgical coke production, cement production, ammonia production and urea consumption, lime production, limestone and dolomite use (e.g., flux stone, flue gas desulfurization, and glass manufacturing), soda ash production and consumption, titanium dioxide production, phosphoric acid production, ferroalloy production, CO<sub>2</sub> consumption, silicon carbide production and consumption, aluminum production, petrochemical production, nitric acid production, adipic acid production, lead production, and zinc production. Additionally, emissions from industrial processes release HFCs, PFCs, and SF<sub>6</sub>. Overall, emission sources in the Industrial Process chapter account for 5 percent of U.S. greenhouse gas emissions in 2008.

## Solvent and Other Product Use

The Solvent and Other Product Use chapter contains greenhouse gas emissions that are produced as a by-product of various solvent and other product uses. In the United States, emissions from N<sub>2</sub>O from product uses, the only source of greenhouse gas emissions from this sector, accounted for 0.1 percent of total U.S. anthropogenic greenhouse gas emissions on a carbon equivalent basis in 2008.

## Agriculture

The Agricultural chapter contains anthropogenic emissions from agricultural activities (except fuel combustion, which is addressed in the Energy chapter, and agricultural CO<sub>2</sub> fluxes, which are addressed in the Land Use, Land-Use Change, and Forestry Chapter). Agricultural activities contribute directly to emissions of greenhouse gases through a variety of processes, including the following source categories: enteric fermentation in domestic livestock, livestock manure management, rice cultivation, agricultural soil management, and field burning of agricultural residues. CH<sub>4</sub> and N<sub>2</sub>O were the primary greenhouse gases emitted by agricultural activities. CH<sub>4</sub> emissions from enteric fermentation and manure management represented 25 percent and 8 percent of total CH<sub>4</sub> emissions from anthropogenic activities, respectively, in 2008. Agricultural soil management activities such as fertilizer application and other cropping practices were the largest source of U.S. N<sub>2</sub>O emissions in 2008, accounting for 68 percent. In 2008, emission sources accounted for in the Agricultural chapters were responsible for 6.2 percent of total U.S. greenhouse gas emissions.

## Land Use, Land-Use Change, and Forestry

The Land Use, Land-Use Change, and Forestry chapter contains emissions of CH<sub>4</sub> and N<sub>2</sub>O, and emissions and removals of CO<sub>2</sub> from forest management, other land-use activities, and land-use change. Forest management practices, tree planting in urban areas, the management of agricultural soils, and the landfilling of yard trimmings and food scraps have resulted in a net uptake (sequestration) of C in the United States. Forests (including vegetation, soils, and harvested wood) accounted for 84 percent of total 2008 net CO<sub>2</sub> flux, urban trees accounted for 10 percent, mineral and organic soil carbon stock changes accounted for 5 percent, and landfilled yard trimmings and food scraps accounted for 1 percent of the total net flux in 2008. The net forest sequestration is a result of net forest growth and increasing forest area, as well as a net accumulation of carbon stocks in harvested wood pools. The net sequestration in urban forests is a result of net tree growth in these areas. In agricultural soils, mineral and organic soils sequester approximately 70 percent more C than is emitted through these soils, liming, and urea fertilization, combined. The mineral soil C sequestration is largely due to the conversion of cropland to permanent pastures and hay production, a reduction in summer fallow areas in semi-arid areas, an increase in the adoption of conservation tillage practices, and an increase in the amounts of organic fertilizers (i.e., manure and sewage sludge) applied to agriculture lands. The landfilled yard trimmings and food scraps net sequestration is due to the long-term accumulation of yard trimming carbon and food scraps in landfills.

1 Land use, land-use change, and forestry activities in 2008 resulted in a net C sequestration of 940.3 Tg CO<sub>2</sub> Eq.  
 2 (Table ES- 5). This represents an offset of 16 percent of total U.S. CO<sub>2</sub> emissions, or 14 percent of total greenhouse  
 3 gas emissions in 2008. Between 1990 and 2008, total land use, land-use change, and forestry net C flux resulted in a  
 4 3.4 percent increase in CO<sub>2</sub> sequestration, primarily due to an increase in the rate of net C accumulation in forest C  
 5 stocks, particularly in aboveground and belowground tree biomass, and harvested wood pools. Annual C  
 6 accumulation in landfilled yard trimmings and food scraps slowed over this period, while the rate of annual C  
 7 accumulation increased in urban trees.

8 Table ES- 5: Net CO<sub>2</sub> Flux from Land Use, Land-Use Change, and Forestry (Tg CO<sub>2</sub> Eq.)

<b>Sink Category</b>	<b>1990</b>	<b>1995</b>	<b>2000</b>	<b>2005</b>	<b>2006</b>	<b>2007</b>	<b>2008</b>
Forest Land Remaining Forest							
Land <sup>1</sup>	(729.8)	(692.6)	(467.7)	(806.6)	(812.5)	(806.9)	(791.9)
Cropland Remaining Cropland	(29.4)	(22.9)	(30.2)	(18.3)	(19.1)	(19.7)	(18.1)
Land Converted to Cropland	2.2	2.9	2.4	5.9	5.9	5.9	5.9
Grassland Remaining							
Grassland	(52.0)	(26.7)	(52.6)	(9.0)	(8.9)	(8.8)	(8.7)
Land Converted to Grassland	(19.8)	(22.3)	(27.3)	(24.6)	(24.5)	(24.3)	(24.2)
Settlements Remaining							
Settlements <sup>2</sup>	(57.1)	(67.3)	(77.5)	(87.8)	(89.8)	(91.9)	(93.9)
Other (Landfilled Yard							
Trimmings and Food Scraps)	(23.5)	(13.9)	(11.3)	(10.1)	(10.3)	(9.8)	(9.5)
<b>Total</b>	<b>(909.4)</b>	<b>(842.9)</b>	<b>(664.2)</b>	<b>(950.4)</b>	<b>(959.2)</b>	<b>(955.4)</b>	<b>(940.3)</b>

9 Note: Totals may not sum due to independent rounding. Parentheses indicate net sequestration.

11 Emissions from Land Use, Land-Use Change, and Forestry are shown in Table ES-6. The application of crushed  
 12 limestone and dolomite to managed land (i.e., liming of agricultural soils) and urea fertilization resulted in CO<sub>2</sub>  
 13 emissions of 7.6 Tg CO<sub>2</sub> Eq. in 2008, an increase of 8 percent relative to 1990. The application of synthetic  
 14 fertilizers to forest and settlement soils in 2008 resulted in direct N<sub>2</sub>O emissions of 1.9 Tg CO<sub>2</sub> Eq. Direct N<sub>2</sub>O  
 15 emissions from fertilizer application to forest soils have increased by 455 percent since 1990, but still account for a  
 16 relatively small portion of overall emissions. Additionally, direct N<sub>2</sub>O emissions from fertilizer application to  
 17 settlement soils increased of 61 percent since 1990. Non-CO<sub>2</sub> emissions from forest fires in 2008 resulted in CH<sub>4</sub>  
 18 emissions of 11.9 Tg CO<sub>2</sub> Eq., and in N<sub>2</sub>O emissions of 9.7 Tg CO<sub>2</sub> Eq. CO<sub>2</sub> and N<sub>2</sub>O emissions from peatlands  
 19 totaled 0.9 Tg CO<sub>2</sub> Eq. and less than 0.01 Tg CO<sub>2</sub> Eq. in 2008, respectively.

20 Table ES-6. Emissions from Land Use, Land-Use Change, and Forestry (Tg CO<sub>2</sub> Eq.)

<b>Source Category</b>	<b>1990</b>	<b>1995</b>	<b>2000</b>	<b>2005</b>	<b>2006</b>	<b>2007</b>	<b>2008</b>
<b>CO<sub>2</sub></b>	<b>8.1</b>	<b>8.1</b>	<b>8.8</b>	<b>8.9</b>	<b>8.8</b>	<b>9.3</b>	<b>8.6</b>
Cropland Remaining Cropland:							
Liming of Agricultural Soils	4.7	4.4	4.3	4.3	4.2	4.5	3.8
Urea Fertilization	2.4	2.7	3.2	3.5	3.7	3.8	3.8
Wetlands Remaining Wetlands:							
Peatlands Remaining Peatlands	1.0	1.0	1.2	1.1	0.9	1.0	0.9
<b>CH<sub>4</sub></b>	<b>3.2</b>	<b>4.3</b>	<b>14.3</b>	<b>9.8</b>	<b>21.6</b>	<b>20.0</b>	<b>11.9</b>
Forest Land Remaining Forest							
Land: Forest Fires	3.2	4.3	14.3	9.8	21.6	20.0	11.9
<b>N<sub>2</sub>O</b>	<b>3.7</b>	<b>4.9</b>	<b>13.2</b>	<b>9.8</b>	<b>19.5</b>	<b>18.3</b>	<b>11.7</b>
Forest Land Remaining Forest							
Land: Forest Fires	2.6	3.5	11.7	8.0	17.6	16.3	9.7
Forest Land Remaining Forest							
Land: Forest Soils <sup>1</sup>	0.1	0.2	0.4	0.4	0.4	0.4	0.4
Settlements Remaining							
Settlements: Settlement Soils <sup>2</sup>	1.0	1.2	1.1	1.5	1.5	1.6	1.6
Wetlands Remaining Wetlands:							
Peatlands Remaining Peatlands	+	+	+	+	+	+	+
<b>Total</b>	<b>15.0</b>	<b>17.2</b>	<b>36.3</b>	<b>28.6</b>	<b>49.8</b>	<b>47.6</b>	<b>32.2</b>

21 + Less than 0.05 Tg CO<sub>2</sub> Eq.

1 Note: Totals may not sum due to independent rounding.

## 2 Waste

3 The Waste chapter contains emissions from waste management activities (except incineration of waste, which is  
4 addressed in the Energy chapter). Landfills were the largest source of anthropogenic greenhouse gas emissions in  
5 the Waste chapter, accounting for almost 80 percent of this chapter's emissions, and 22 percent of total U.S. CH<sub>4</sub>  
6 emissions.<sup>13</sup> Additionally, wastewater treatment accounts for 18 percent of Waste emissions, 4 percent of U.S. CH<sub>4</sub>  
7 emissions, and 2 percent of U.S. N<sub>2</sub>O emissions. Emissions of CH<sub>4</sub> and N<sub>2</sub>O from composting are also accounted  
8 for in this chapter; generating emissions of 1.7 Tg CO<sub>2</sub> Eq. and 1.8 Tg CO<sub>2</sub> Eq., respectively. Overall, emission  
9 sources accounted for in the Waste chapter generated 2.3 percent of total U.S. greenhouse gas emissions in 2008.

## 10 Other Information

### 11 Emissions by Economic Sector

12 Throughout the Inventory of U.S. Greenhouse Gas Emissions and Sinks report, emission estimates are grouped into  
13 six sectors (i.e., chapters) defined by the IPCC: Energy; Industrial Processes; Solvent Use; Agriculture; Land Use,  
14 Land-Use Change, and Forestry; and Waste. While it is important to use this characterization for consistency with  
15 UNFCCC reporting guidelines, it is also useful to allocate emissions into more commonly used sectoral categories.  
16 This section reports emissions by the following economic sectors: Residential, Commercial, Industry,  
17 Transportation, Electricity Generation, Agriculture, and U.S. Territories.

18 Table ES-7 summarizes emissions from each of these sectors, and Figure ES-13 shows the trend in emissions by  
19 sector from 1990 to 2008.

20

21 Figure ES-13: Emissions Allocated to Economic Sectors

22

23 Table ES-7: U.S. Greenhouse Gas Emissions Allocated to Economic Sectors (Tg CO<sub>2</sub> Eq.)

<b>Implied Sectors</b>	<b>1990</b>	<b>1995</b>	<b>2000</b>	<b>2005</b>	<b>2006</b>	<b>2007</b>	<b>2008</b>
Electric Power Industry	1,851.2	1,981.7	2,319.4	2,418.8	2,366.7	2,431.7	2,382.5
Transportation	1,545.1	1,695.2	1,932.3	2,016.1	1,993.0	2,003.5	1,886.1
Industry	1,512.1	1,534.0	1,475.5	1,356.9	1,386.2	1,380.1	1,352.8
Agriculture	433.2	460.8	485.3	494.1	515.1	518.0	504.1
Commercial	395.2	399.6	387.4	399.1	389.3	404.6	411.2
Residential	346.2	367.7	386.8	371.0	335.1	356.4	359.5
U.S. Territories	33.7	40.7	46.9	58.9	60.0	57.8	49.9
<b>Total Emissions</b>	<b>6,116.6</b>	<b>6,479.7</b>	<b>7,033.7</b>	<b>7,114.9</b>	<b>7,045.4</b>	<b>7,152.1</b>	<b>6,946.1</b>
Land Use, Land-Use Change, and Forestry (Sinks)	(909.4)	(842.9)	(664.2)	(950.4)	(959.2)	(955.4)	(940.3)
<b>Net Emissions (Sources and Sinks)</b>	<b>5,207.2</b>	<b>5,636.9</b>	<b>6,369.5</b>	<b>6,164.5</b>	<b>6,086.3</b>	<b>6,196.7</b>	<b>6,005.7</b>

24 Note: Totals may not sum due to independent rounding. Emissions include CO<sub>2</sub>, CH<sub>4</sub>, N<sub>2</sub>O, HFCs, PFCs, and SF<sub>6</sub>.  
25 See Table 2-12 for more detailed data.

26

27 Using this categorization, emissions from electricity generation accounted for the largest portion (34 percent) of  
28 U.S. greenhouse gas emissions in 2008. Transportation activities, in aggregate, accounted for the second largest  
29 portion (27 percent), while emissions from industry accounted for the third largest portion (19 percent) of U.S.  
30 greenhouse gas emissions in 2008. In contrast to electricity generation and transportation, emissions from industry  
31 have in general declined over the past decade. The long-term decline in these emissions has been due to structural  
32 changes in the U.S. economy (i.e., shifts from a manufacturing-based to a service-based economy), fuel switching,

---

<sup>13</sup> Landfills also store carbon, due to incomplete degradation of organic materials such as wood products and yard trimmings, as described in the Land-Use, Land-Use Change, and Forestry chapter of the Inventory report.

1 and energy efficiency improvements. The remaining 19 percent of U.S. greenhouse gas emissions were contributed  
 2 by, in order of importance, the agriculture, commercial, and residential sectors, plus emissions from U.S. territories.  
 3 Activities related to agriculture accounted for 7 percent of U.S. emissions; unlike other economic sectors,  
 4 agricultural sector emissions were dominated by N<sub>2</sub>O emissions from agricultural soil management and CH<sub>4</sub>  
 5 emissions from enteric fermentation. The commercial sector accounted for 6 percent of emissions while the  
 6 residential sector accounted for 5 percent of emissions and U.S. territories accounted for 1 percent of emissions;  
 7 emissions from these sectors primarily consisted of CO<sub>2</sub> emissions from fossil fuel combustion.

8 CO<sub>2</sub> was also emitted and sequestered by a variety of activities related to forest management practices, tree planting  
 9 in urban areas, the management of agricultural soils, and landfilling of yard trimmings.

10 Electricity is ultimately consumed in the economic sectors described above. Table ES-8 presents greenhouse gas  
 11 emissions from economic sectors with emissions related to electricity generation distributed into end-use categories  
 12 (i.e., emissions from electricity generation are allocated to the economic sectors in which the electricity is  
 13 consumed). To distribute electricity emissions among end-use sectors, emissions from the source categories  
 14 assigned to electricity generation were allocated to the residential, commercial, industry, transportation, and  
 15 agriculture economic sectors according to retail sales of electricity.<sup>14</sup> These source categories include CO<sub>2</sub> from  
 16 fossil fuel combustion and the use of limestone and dolomite for flue gas desulfurization, CO<sub>2</sub> and N<sub>2</sub>O from  
 17 incineration of waste, CH<sub>4</sub> and N<sub>2</sub>O from stationary sources, and SF<sub>6</sub> from electrical transmission and distribution  
 18 systems.

19 When emissions from electricity are distributed among these sectors, industry accounts for the largest share of U.S.  
 20 greenhouse gas emissions (29 percent) in 2008. Emissions from the residential and commercial sectors also increase  
 21 substantially when emissions from electricity are included, due to their relatively large share of electricity  
 22 consumption (e.g., lighting, appliances, etc.). Transportation activities remain the second largest contributor to total  
 23 U.S. emissions (27 percent) despite the considerable decline in emissions from this sector during the past year. In  
 24 all sectors except agriculture, CO<sub>2</sub> accounts for more than 80 percent of greenhouse gas emissions, primarily from  
 25 the combustion of fossil fuels. Figure ES-14 shows the trend in these emissions by sector from 1990 to 2008.

26 Table ES-8: U.S Greenhouse Gas Emissions by Economic Sector with Electricity-Related Emissions Distributed  
 27 (Tg CO<sub>2</sub> Eq.)

<b>Implied Sectors</b>	<b>1990</b>	<b>1995</b>	<b>2000</b>	<b>2005</b>	<b>2006</b>	<b>2007</b>	<b>2008</b>
Industry	2,179.8	2,226.8	2,240.2	2,070.1	2,077.5	2,088.9	2,023.2
Transportation	1,548.2	1,698.3	1,935.8	2,020.9	1,997.5	2,008.6	1,890.8
Commercial	942.1	996.6	1,135.9	1,208.4	1,195.2	1,232.7	1,243.2
Residential	949.1	1,020.7	1,156.7	1,233.7	1,173.1	1,219.2	1,208.1
Agriculture	463.7	496.7	518.2	523.0	542.0	544.9	530.8
U.S. Territories	33.7	40.7	46.9	58.9	60.0	57.8	49.9
<b>Total Emissions</b>	<b>6,116.6</b>	<b>6,479.7</b>	<b>7,033.7</b>	<b>7,114.9</b>	<b>7,045.4</b>	<b>7,152.1</b>	<b>6,946.1</b>
Land Use, Land-Use Change, and Forestry (Sinks)	(909.4)	(842.9)	(664.2)	(950.4)	(959.2)	(955.4)	(940.3)
<b>Net Emissions (Sources and Sinks)</b>	<b>5,207.2</b>	<b>5,636.9</b>	<b>6,369.5</b>	<b>6,164.5</b>	<b>6,086.3</b>	<b>6,196.7</b>	<b>6,005.7</b>

28 See Table 2-14 for more detailed data.  
 29

30  
 31 Figure ES-14: Emissions with Electricity Distributed to Economic Sectors  
 32  
 33  
 34 [BEGIN BOX]

<sup>14</sup> Emissions were not distributed to U.S. territories, since the electricity generation sector only includes emissions related to the generation of electricity in the 50 states and the District of Columbia.

1  
2 **Box ES-2: Recent Trends in Various U.S. Greenhouse Gas Emissions-Related Data**

3  
4 Total emissions can be compared to other economic and social indices to highlight changes over time. These  
5 comparisons include: (1) emissions per unit of aggregate energy consumption, because energy-related activities are  
6 the largest sources of emissions; (2) emissions per unit of fossil fuel consumption, because almost all energy-related  
7 emissions involve the combustion of fossil fuels; (3) emissions per unit of electricity consumption, because the  
8 electric power industry—utilities and nonutilities combined—was the largest source of U.S. greenhouse gas  
9 emissions in 2008; (4) emissions per unit of total gross domestic product as a measure of national economic activity;  
10 and (5) emissions per capita.

11 Table ES-9 provides data on various statistics related to U.S. greenhouse gas emissions normalized to 1990 as a  
12 baseline year. Greenhouse gas emissions in the United States have grown at an average annual rate of 0.7 percent  
13 since 1990. This rate is slightly slower than that for total energy, approximately the same as for fossil fuel  
14 consumption, and much slower than that for either electricity consumption or overall gross domestic product. Total  
15 U.S. greenhouse gas emissions have also grown slightly slower than national population since 1990 (see Figure ES-  
16 15).

17 **Table ES-9: Recent Trends in Various U.S. Data (Index 1990 = 100)**

<b>Variable</b>	<b>1990</b>	<b>1995</b>	<b>2000</b>	<b>2005</b>	<b>2006</b>	<b>2007</b>	<b>2008</b>	<b>Growth Rate<sup>a</sup></b>
GDP <sup>b</sup>	100	113	140	157	162	165	166	2.9%
Electricity Consumption <sup>c</sup>	100	112	127	134	135	138	136	1.8%
Fossil Fuel Consumption <sup>c</sup>	100	107	117	119	117	119	115	0.8%
Energy Consumption <sup>c</sup>	100	107	116	119	118	120	118	0.9%
Population <sup>d</sup>	100	107	113	118	119	120	121	1.1%
Greenhouse Gas Emissions <sup>e</sup>	100	106	115	116	115	117	114	0.7%

18 <sup>a</sup> Average annual growth rate

19 <sup>b</sup> Gross Domestic Product in chained 2000 dollars (BEA 2008)

20 <sup>c</sup> Energy content-weighted values (EIA 2008a)

21 <sup>d</sup> U.S. Census Bureau (2008)

22 <sup>e</sup> GWP-weighted values

23  
24 **Figure ES-15: U.S. Greenhouse Gas Emissions Per Capita and Per Dollar of Gross Domestic Product**  
25 Source: BEA (2008), U.S. Census Bureau (2008), and emission estimates in this report.

26  
27 [END BOX]

28  
29 **Indirect Greenhouse Gases (CO, NO<sub>x</sub>, NMVOCs, and SO<sub>2</sub>)**

30 The reporting requirements of the UNFCCC<sup>15</sup> request that information be provided on indirect greenhouse gases,  
31 which include CO, NO<sub>x</sub>, NMVOCs, and SO<sub>2</sub>. These gases do not have a direct global warming effect, but indirectly  
32 affect terrestrial radiation absorption by influencing the formation and destruction of tropospheric and stratospheric  
33 ozone, or, in the case of SO<sub>2</sub>, by affecting the absorptive characteristics of the atmosphere. Additionally, some of  
34 these gases may react with other chemical compounds in the atmosphere to form compounds that are greenhouse  
35 gases.

36 Since 1970, the United States has published estimates of annual emissions of CO, NO<sub>x</sub>, NMVOCs, and SO<sub>2</sub> (EPA

<sup>15</sup> See <<http://unfccc.int/resource/docs/cop8/08.pdf>>.



2008),<sup>16</sup> which are regulated under the Clean Air Act. Table ES- 10 shows that fuel combustion accounts for the majority of emissions of these indirect greenhouse gases. Industrial processes—such as the manufacture of chemical and allied products, metals processing, and industrial uses of solvents—are also significant sources of CO, NO<sub>x</sub>, and NMVOCs.

Table ES- 10: Emissions of NO<sub>x</sub>, CO, NMVOCs, and SO<sub>2</sub> (Gg)

<b>Gas/Activity</b>	<b>1990</b>	<b>1995</b>	<b>2000</b>	<b>2005</b>	<b>2006</b>	<b>2007</b>	<b>2008</b>
<b>NO<sub>x</sub></b>	<b>21,728</b>	<b>21,227</b>	<b>19,145</b>	<b>15,933</b>	<b>15,071</b>	<b>14,410</b>	<b>13,578</b>
Mobile Fossil Fuel Combustion	10,862	10,536	10,199	9,012	8,488	7,965	7,441
Stationary Fossil Fuel Combustion	10,023	9,862	8,053	5,858	5,545	5,432	5,148
Industrial Processes	591	607	626	569	553	537	520
Oil and Gas Activities	139	100	111	321	319	318	318
Incineration of Waste	82	88	114	129	121	114	106
Agricultural Burning	30	30	37	40	40	38	40
Solvent Use	1	3	3	3	4	4	4
Waste	0	1	2	2	2	2	2
<b>CO</b>	<b>130,536</b>	<b>109,114</b>	<b>92,872</b>	<b>71,555</b>	<b>67,909</b>	<b>64,348</b>	<b>60,739</b>
Mobile Fossil Fuel Combustion	119,360	97,630	83,559	62,692	58,972	55,253	51,533
Stationary Fossil Fuel Combustion	5,000	5,383	4,340	4,649	4,695	4,744	4,792
Industrial Processes	4,125	3,959	2,216	1,555	1,597	1,640	1,682
Incineration of Waste	978	1,073	1,670	1,403	1,412	1,421	1,430
Agricultural Burning	766	745	888	930	905	960	970
Oil and Gas Activities	302	316	146	318	319	320	322
Waste	1	2	8	7	7	7	7
Solvent Use	5	5	45	2	2	2	2
<b>NMVOCs</b>	<b>20,930</b>	<b>19,520</b>	<b>15,227</b>	<b>13,761</b>	<b>13,594</b>	<b>13,423</b>	<b>13,254</b>
Mobile Fossil Fuel Combustion	10,932	8,745	7,229	6,330	6,037	5,742	5,447
Solvent Use	5,216	5,609	4,384	3,851	3,846	3,839	3,834
Industrial Processes	2,422	2,642	1,773	1,997	1,933	1,869	1,804
Stationary Fossil Fuel Combustion	912	973	1,077	716	918	1,120	1,321
Oil and Gas Activities	554	582	388	510	510	509	509
Incineration of Waste	222	237	257	241	238	234	230
Waste	673	731	119	114	113	111	109
Agricultural Burning	NA	NA	NA	NA	NA	NA	NA
<b>SO<sub>2</sub></b>	<b>20,935</b>	<b>16,891</b>	<b>14,830</b>	<b>13,466</b>	<b>12,388</b>	<b>11,799</b>	<b>10,368</b>
Stationary Fossil Fuel Combustion	18,407	14,724	12,849	11,541	10,612	10,172	8,891
Industrial Processes	1,307	1,117	1,031	831	818	807	795
Mobile Fossil Fuel Combustion	793	672	632	889	750	611	472
Oil and Gas Activities	390	335	287	181	182	184	187
Incineration of Waste	38	42	29	24	24	24	23
Waste	0	1	1	1	1	1	1
Solvent Use	0	1	1	0	0	0	0
Agricultural Burning	NA	NA	NA	NA	NA	NA	NA

Source: (EPA 2009, disaggregated based on EPA 2003) except for estimates from field burning of agricultural residues.

NA (Not Available)

Note: Totals may not sum due to independent rounding.

## Key Categories

The IPCC's Good Practice Guidance (IPCC 2000) defines a key category as a "[source or sink category] that is prioritized within the national inventory system because its estimate has a significant influence on a country's total

<sup>16</sup> NO<sub>x</sub> and CO emission estimates from field burning of agricultural residues were estimated separately, and therefore not taken from EPA (2008).

1 inventory of direct greenhouse gases in terms of the absolute level of emissions, the trend in emissions, or both.”<sup>17</sup>  
2 By definition, key categories are sources or sinks that have the greatest contribution to the absolute overall level of  
3 national emissions in any of the years covered by the time series. In addition, when an entire time series of emission  
4 estimates is prepared, a thorough investigation of key categories must also account for the influence of trends of  
5 individual source and sink categories. Finally, a qualitative evaluation of key categories should be performed, in  
6 order to capture any key categories that were not identified in either of the quantitative analyses.

7 Figure ES-16 presents 2008 emission estimates for the key categories as defined by a level analysis (i.e., the  
8 contribution of each source or sink category to the total inventory level). The UNFCCC reporting guidelines request  
9 that key category analyses be reported at an appropriate level of disaggregation, which may lead to source and sink  
10 category names which differ from those used elsewhere in the inventory report. For more information regarding key  
11 categories, see section 1.5 and Annex 1 of the inventory report.

12  
13 Figure ES-16: 2008 Key Categories  
14

## 15 Quality Assurance and Quality Control (QA/QC)

16 The United States seeks to continually improve the quality, transparency, and credibility of the Inventory of U.S.  
17 Greenhouse Gas Emissions and Sinks. To assist in these efforts, the United States implemented a systematic  
18 approach to QA/QC. While QA/QC has always been an integral part of the U.S. national system for inventory  
19 development, the procedures followed for the current inventory have been formalized in accordance with the  
20 QA/QC plan and the UNFCCC reporting guidelines.

## 21 Uncertainty Analysis of Emission Estimates

22 While the current U.S. emissions inventory provides a solid foundation for the development of a more detailed and  
23 comprehensive national inventory, there are uncertainties associated with the emission estimates. Some of the  
24 current estimates, such as those for CO<sub>2</sub> emissions from energy-related activities and cement processing, are  
25 considered to have low uncertainties. For some other categories of emissions, however, a lack of data or an  
26 incomplete understanding of how emissions are generated increases the uncertainty associated with the estimates  
27 presented. Acquiring a better understanding of the uncertainty associated with inventory estimates is an important  
28 step in helping to prioritize future work and improve the overall quality of the Inventory. Recognizing the benefit of  
29 conducting an uncertainty analysis, the UNFCCC reporting guidelines follow the recommendations of the IPCC  
30 Good Practice Guidance (IPCC 2000) and require that countries provide single estimates of uncertainty for source  
31 and sink categories.

32 Currently, a qualitative discussion of uncertainty is presented for all source and sink categories. Within the  
33 discussion of each emission source, specific factors affecting the uncertainty surrounding the estimates are  
34 discussed. Most sources also contain a quantitative uncertainty assessment, in accordance with UNFCCC reporting  
35 guidelines.

---

<sup>17</sup> See Chapter 7 “Methodological Choice and Recalculation” in IPCC (2000). <<http://www.ipcc-nggip.iges.or.jp/public/gp/gpgaum.htm>>

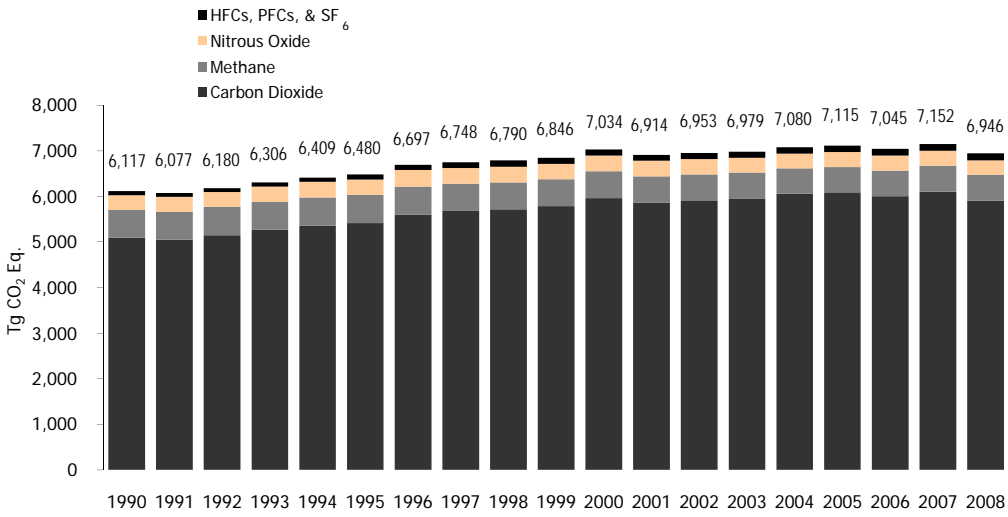


Figure ES-1: U.S. Greenhouse Gas Emissions by Gas

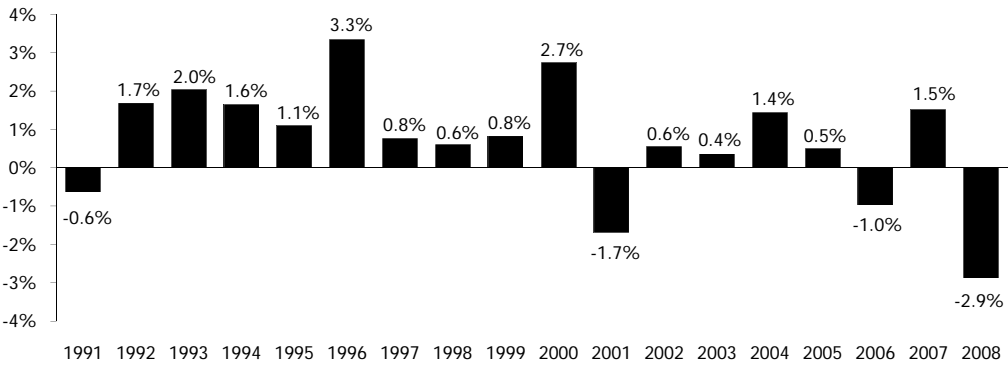


Figure ES-2: Annual Percent Change in U.S. Greenhouse Gas Emissions

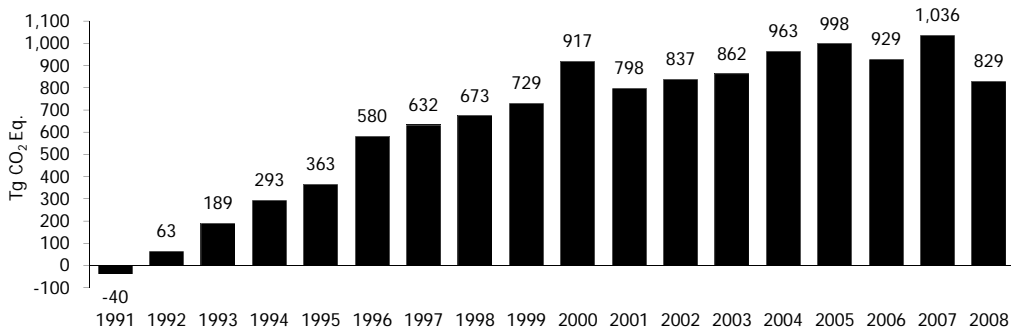


Figure ES-3: Cumulative Change in Annual U.S. Greenhouse Gas Emissions Relative to 1990

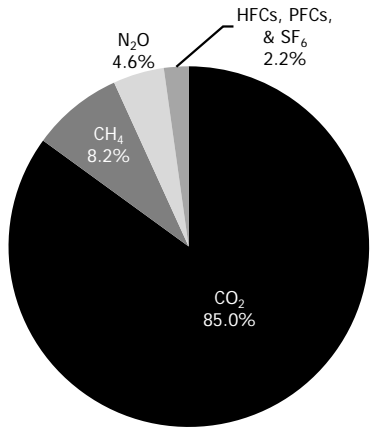


Figure ES-4: 2008 Greenhouse Gas Emissions by Gas (percents based on Tg CO<sub>2</sub> Eq.)

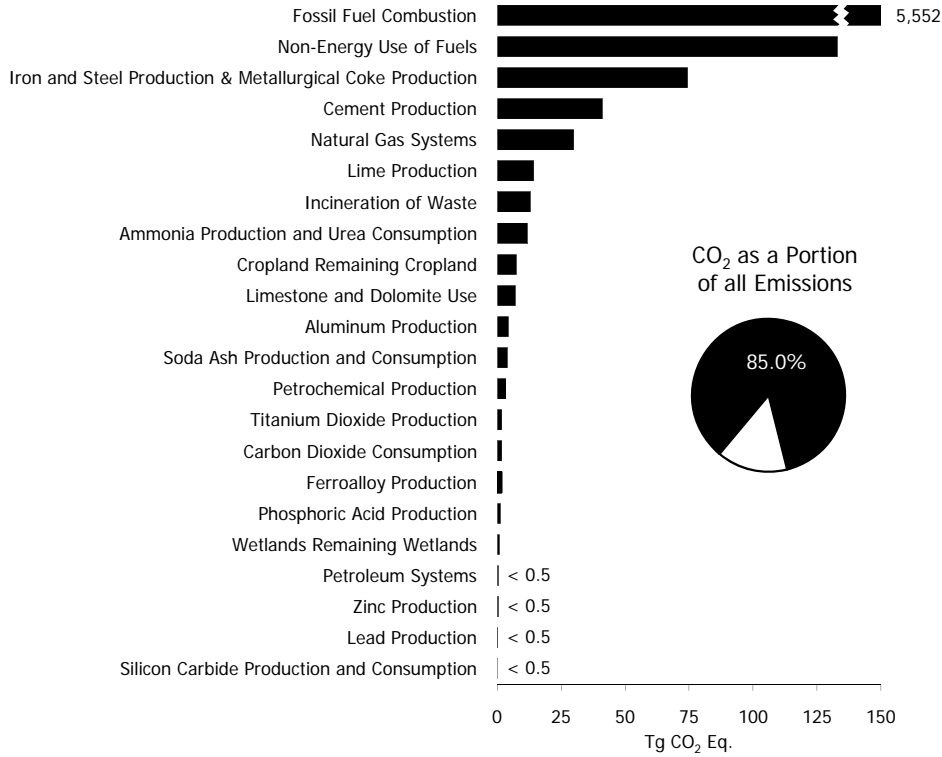


Figure ES-5: 2008 Sources of CO<sub>2</sub> Emissions

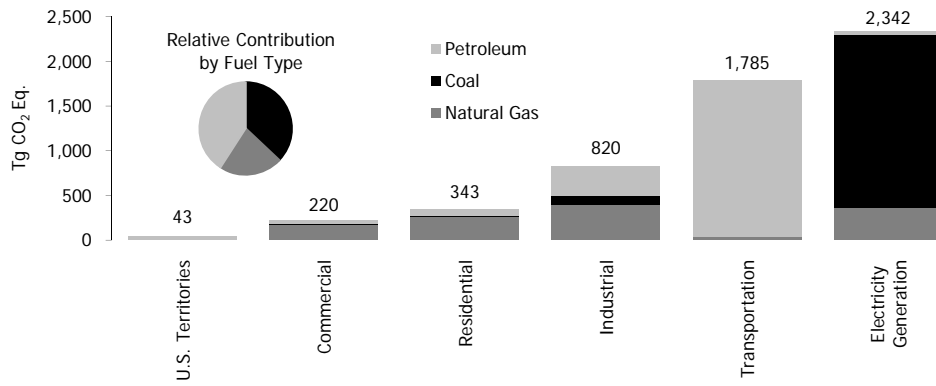


Figure ES-6: 2008 CO<sub>2</sub> Emissions from Fossil Fuel Combustion by Sector and Fuel Type  
 Note: Electricity generation also includes emissions of less than 0.5 Tg CO<sub>2</sub> Eq. from geothermal-based electricity generation.

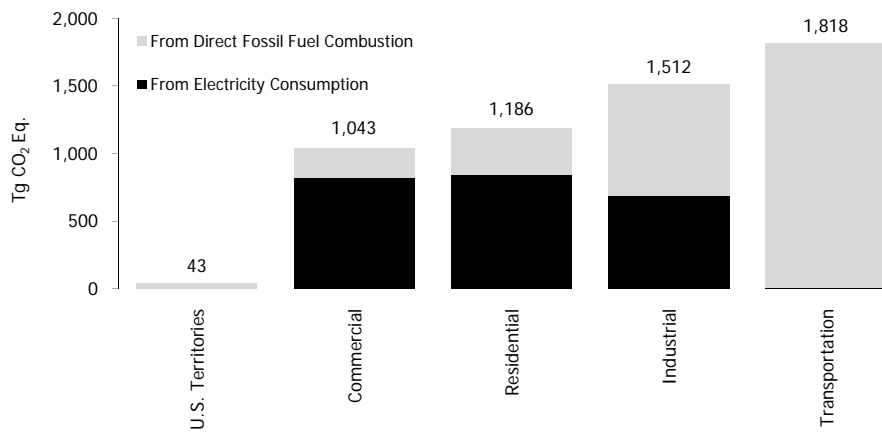


Figure ES-7: 2008 End-Use Sector Emissions of CO<sub>2</sub>, CH<sub>4</sub>, and N<sub>2</sub>O from Fossil Fuel Combustion

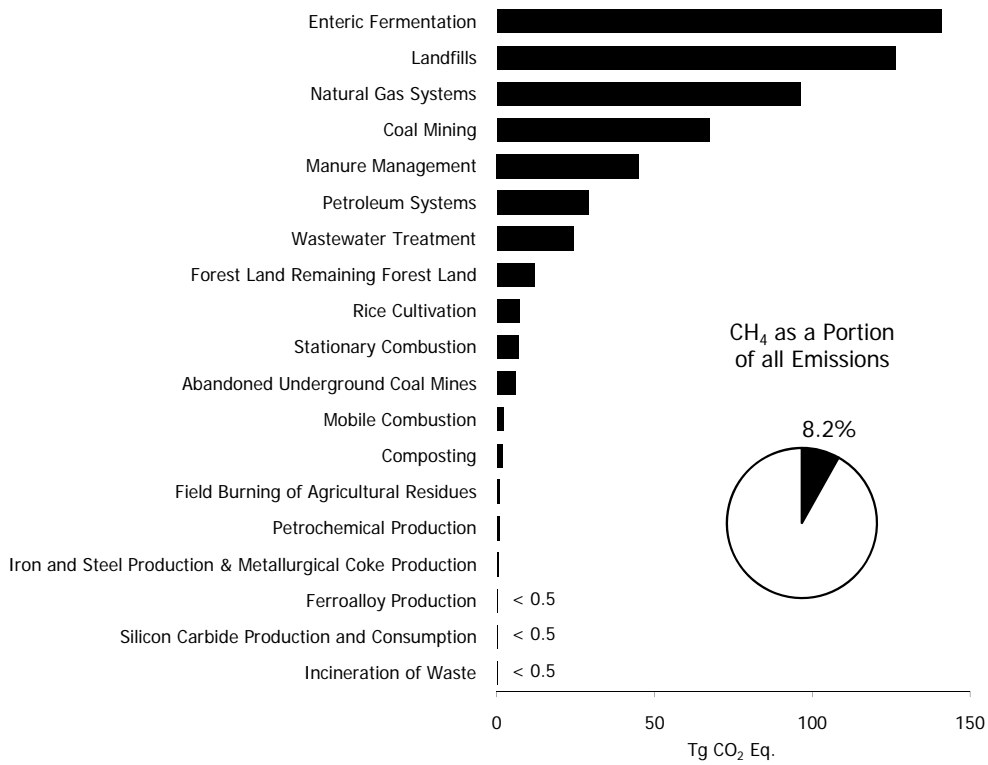


Figure ES-8: 2008 Sources of CH<sub>4</sub> Emissions

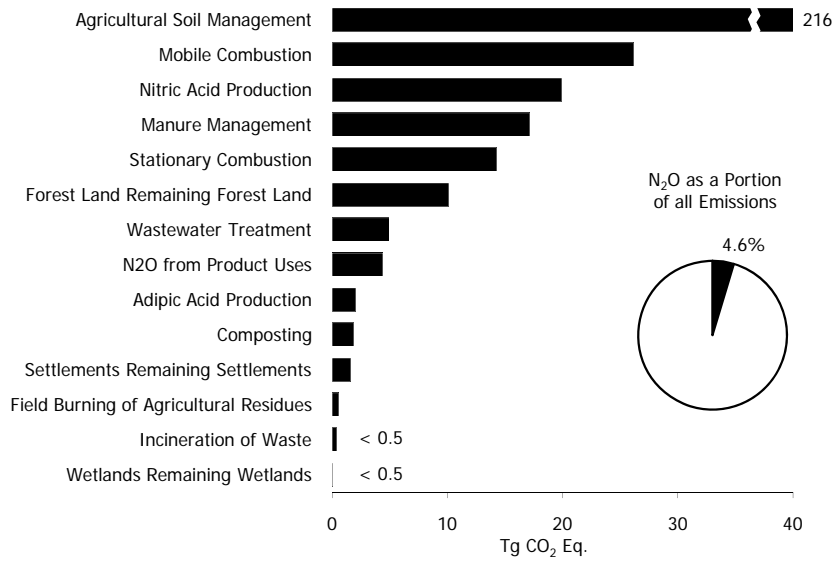


Figure ES-9: 2008 Sources of N<sub>2</sub>O Emissions

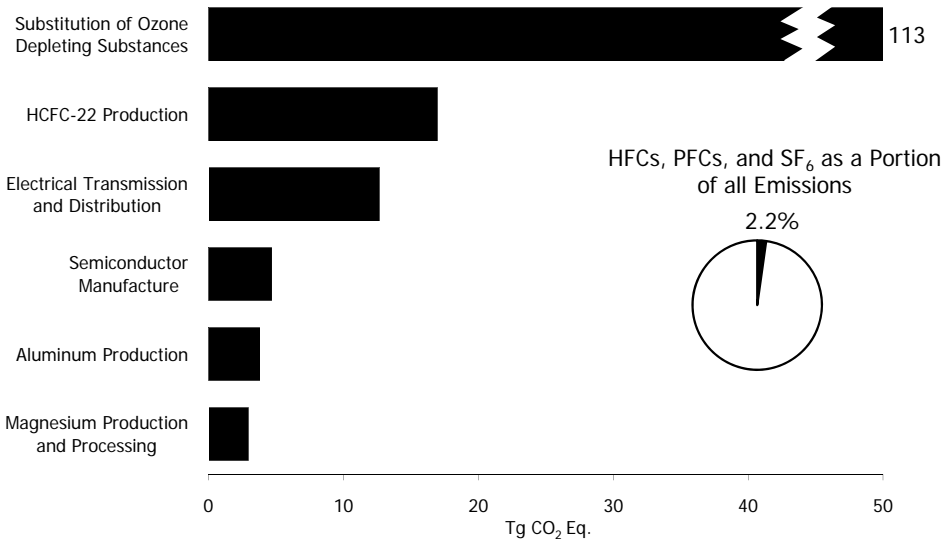
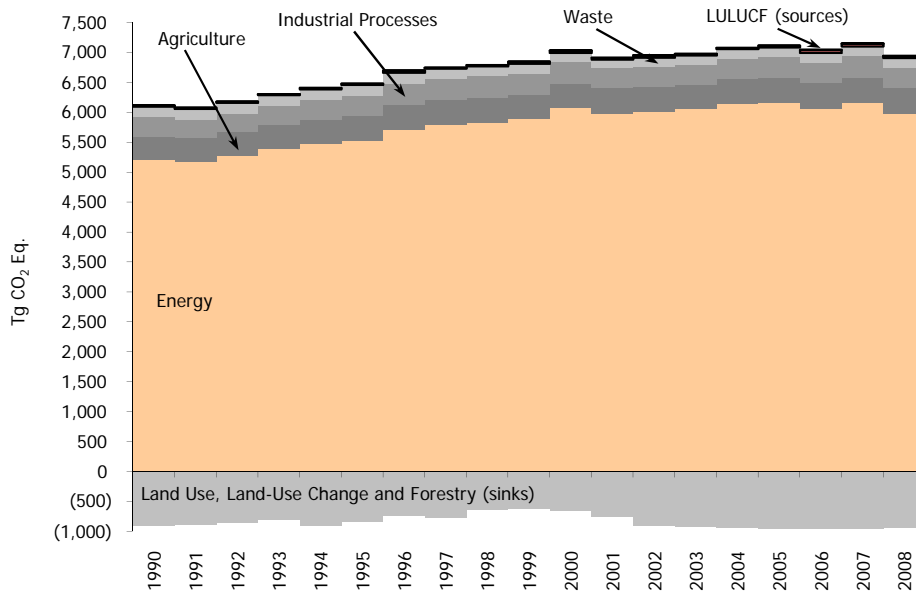


Figure ES-10: 2008 Sources of HFCs, PFCs, and SF<sub>6</sub> Emissions



Note: Relatively smaller amounts of GWP-weighted emissions are also emitted from the Solvent and Other Product Use sectors

Figure ES-11: U.S. Greenhouse Gas Emissions and Sinks by Chapter/IPCC Sector

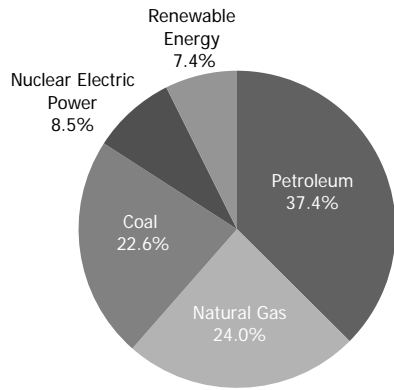


Figure ES-12: 2008 U.S. Energy Consumption by Energy Source

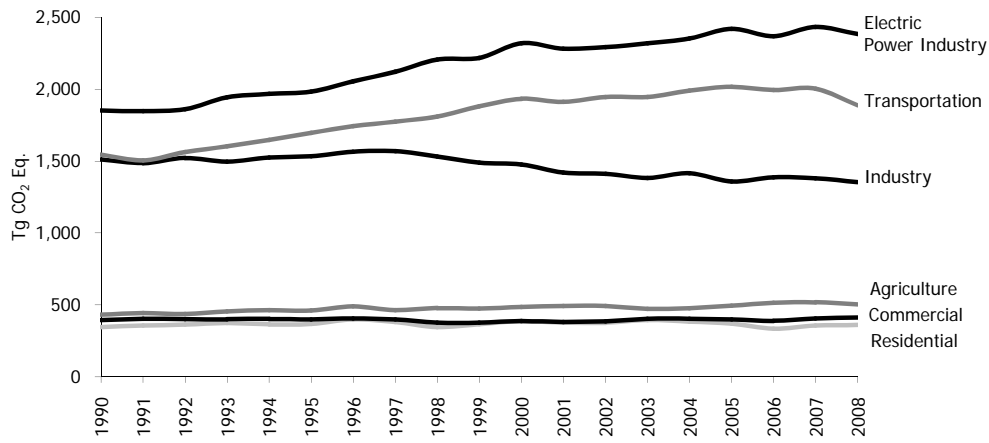


Figure ES-13: Emissions Allocated to Economic Sectors  
 Note: Does not include U.S. Territories.



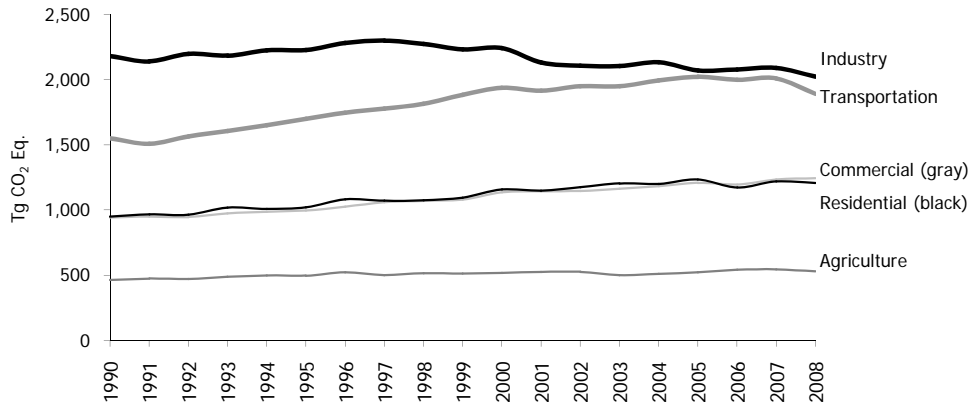


Figure ES-14: Emissions with Electricity Distributed to Economic Sectors  
 Note: Does not include U.S. Territories.

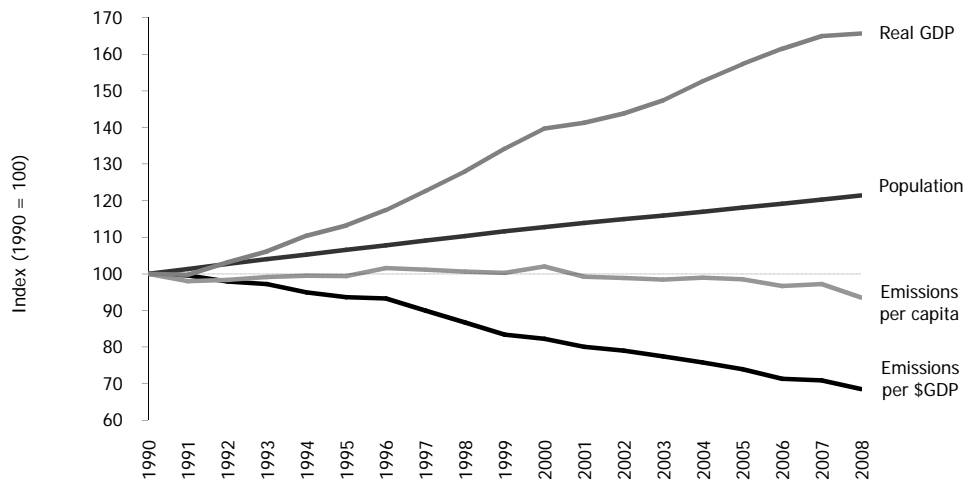


Figure ES-15: U.S. Greenhouse Gas Emissions Per Capita and Per Dollar of Gross Domestic Product

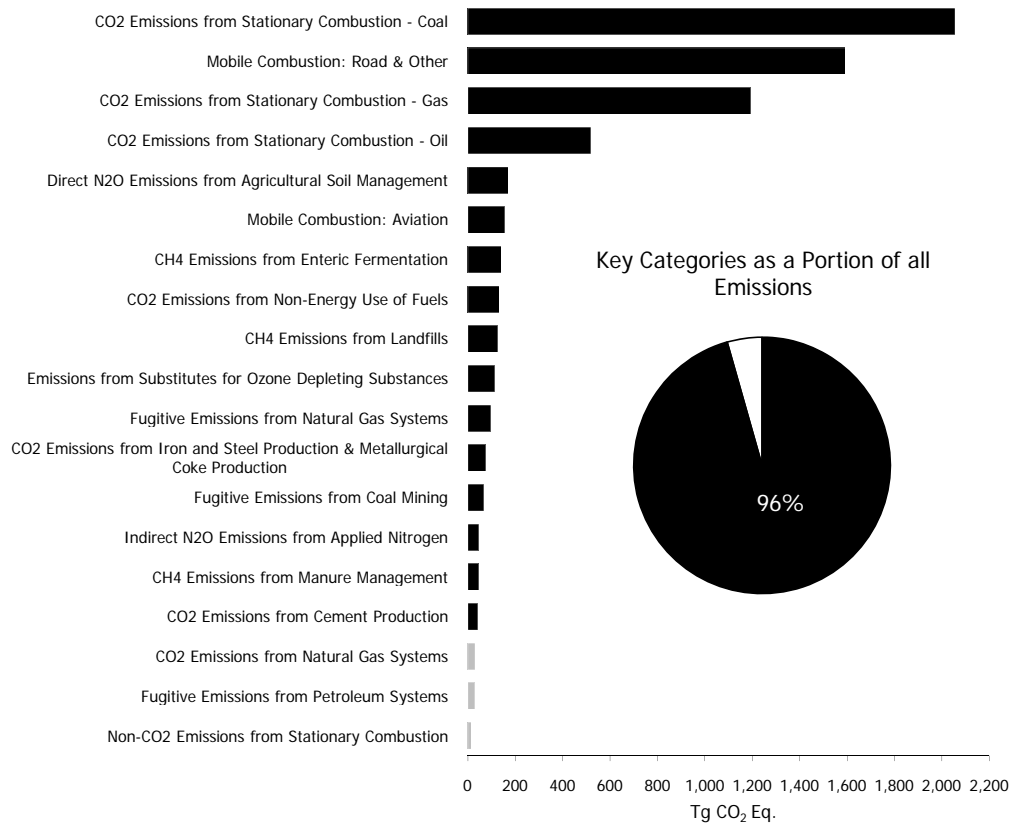


Figure ES-16: 2008 Key Categories

Notes: For a complete discussion of the key category analysis, see Annex 1.

Black bars indicate a Tier 1 level assessment key category.

Gray bars indicate a Tier 2 level assessment key category.