

# Portland Cement Concrete Pavement

# 3.4



PCCP highway.

Photo Source: Golder Associates Inc.



PCCP surfacing.

Photo Source: Golder Associates Inc.

# Portland Cement Concrete Pavement

# 3.4



PCCP construction: dowel bar placement.

Photo Source: Golder Associates Inc.

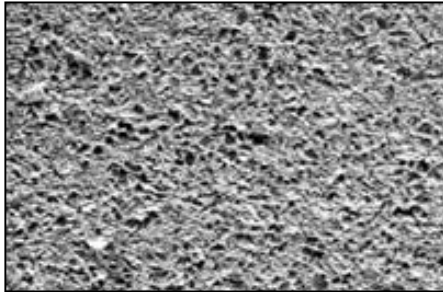


PCCP construction: concrete paving.

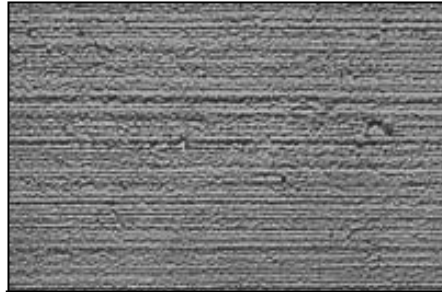
Photo Source: American Concrete Pavement Association

# Portland Cement Concrete Pavement

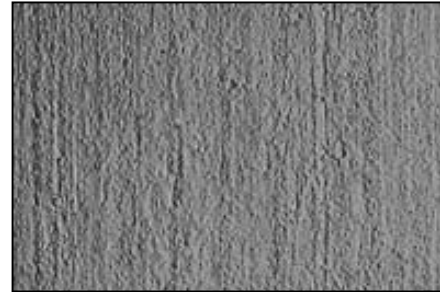
# 3.4



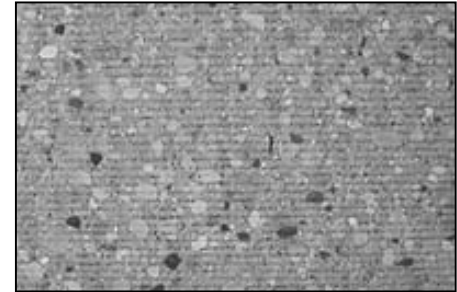
**Abraded Finish.**



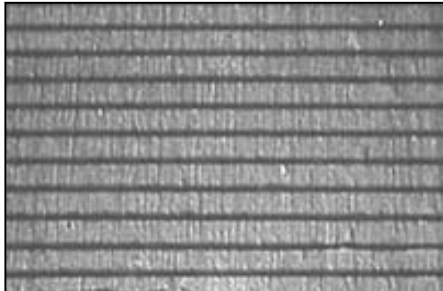
**Broom Finish.**



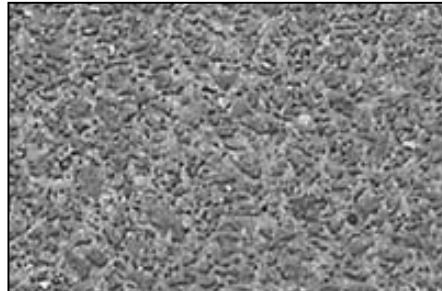
**Burlap Finish.**



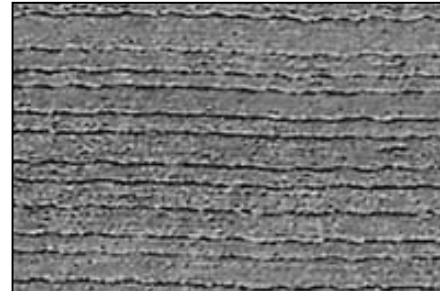
**Diamond Grind Finish.**



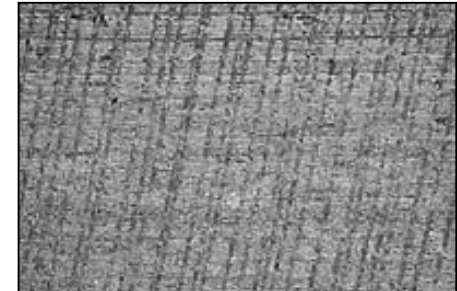
**Diamond Groove Finish.**



**Exposed Aggregate Finish.**



**Longitudinal Tine Finish.**



**Transverse Tine Finish.**

PCCP surfacing textures.

Photo Source: American Concrete Pavement Association



# Porous PCCP

# 3.5



Porous PCCP parking lot.

Photo Source: Southeast  
Cement Association

## Traffic Range:

Typical AADT < 1,000.

## Life Expectancy:

Typically 20 years.

## Unit Price:

Material & Installation: \$44 to \$70/m<sup>2</sup> (\$37 to \$59/yd<sup>2</sup>) for 100 mm (4 in.) thick PCC layer.

## Appearance:

PCCP typically has a coarse surface texture and light gray color. Surface color can be modified by using pigments or stains.

## Advantages:

Allows surface water infiltration and reduces surface runoff compared to conventional PCCP.

## Limitations:

Not recommended for high traffic volumes or heavy truck traffic; Frequent maintenance required.

**Product Description:** Porous PCCP is a paved surface and subbase comprised of PCC and gravel or crushed aggregate, formed in a manner that results in a permeable surface. Stormwater that passes through the pavement may completely or partially infiltrate the underlying soil with the excess being collected and routed to an overflow facility.

# Porous PCCP

# 3.5



Porous PCCP parking lot.

Photo Source: Cahill Associates

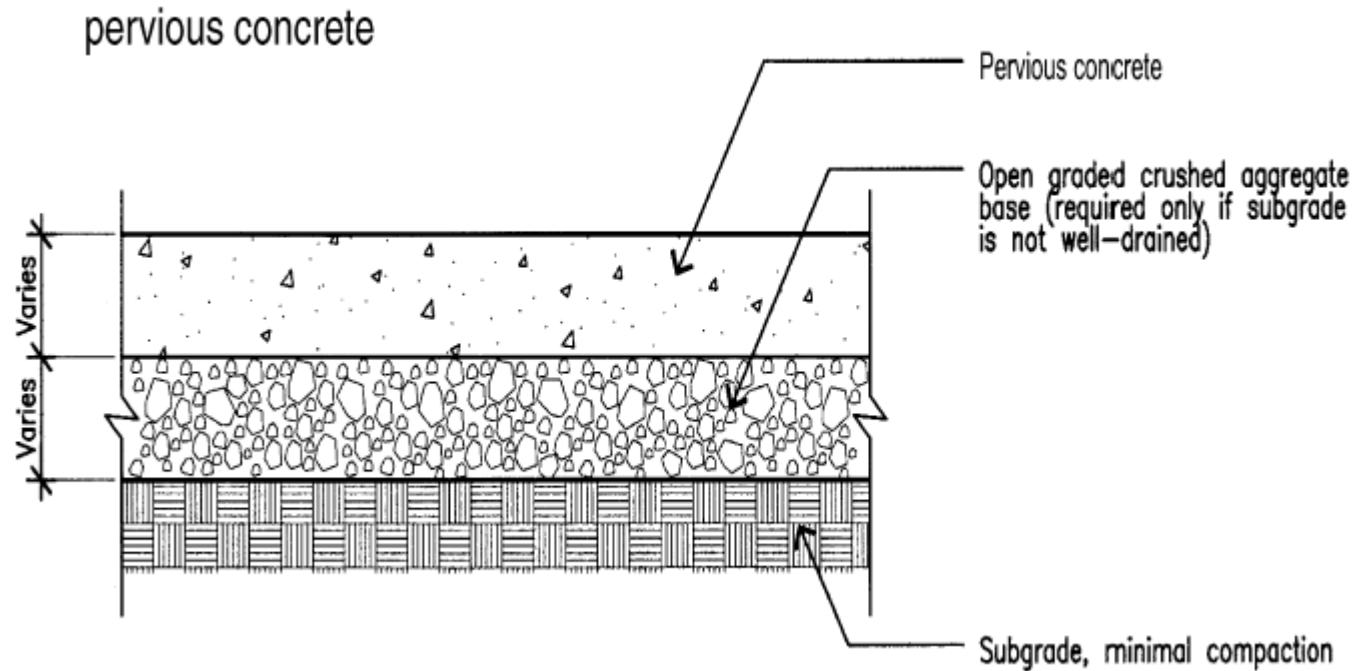


Porous PCCP construction.

Photo Source: City of Portland, OR

# Porous PCCP

# 3.5



Porous PCCP schematic.

Photo Source: City of Portland, OR