

**APPENDIX A – PLAN AND PROFILE MAPS FROM DULCE, NEW MEXICO.**





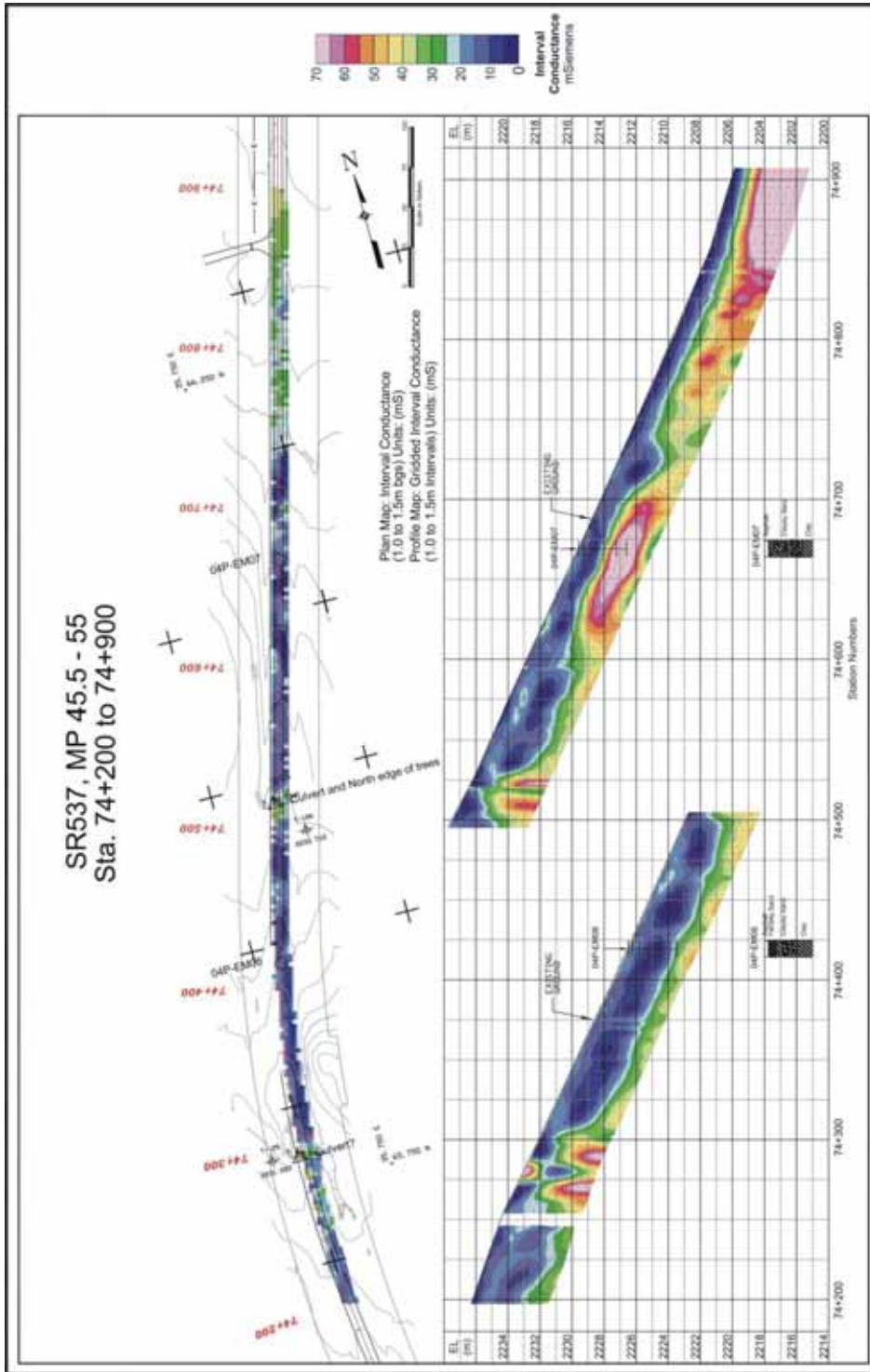


Figure 13. Plan and Profile Maps. Inverted EM31 –3 Data (Stat. 74+200 to 74+900).

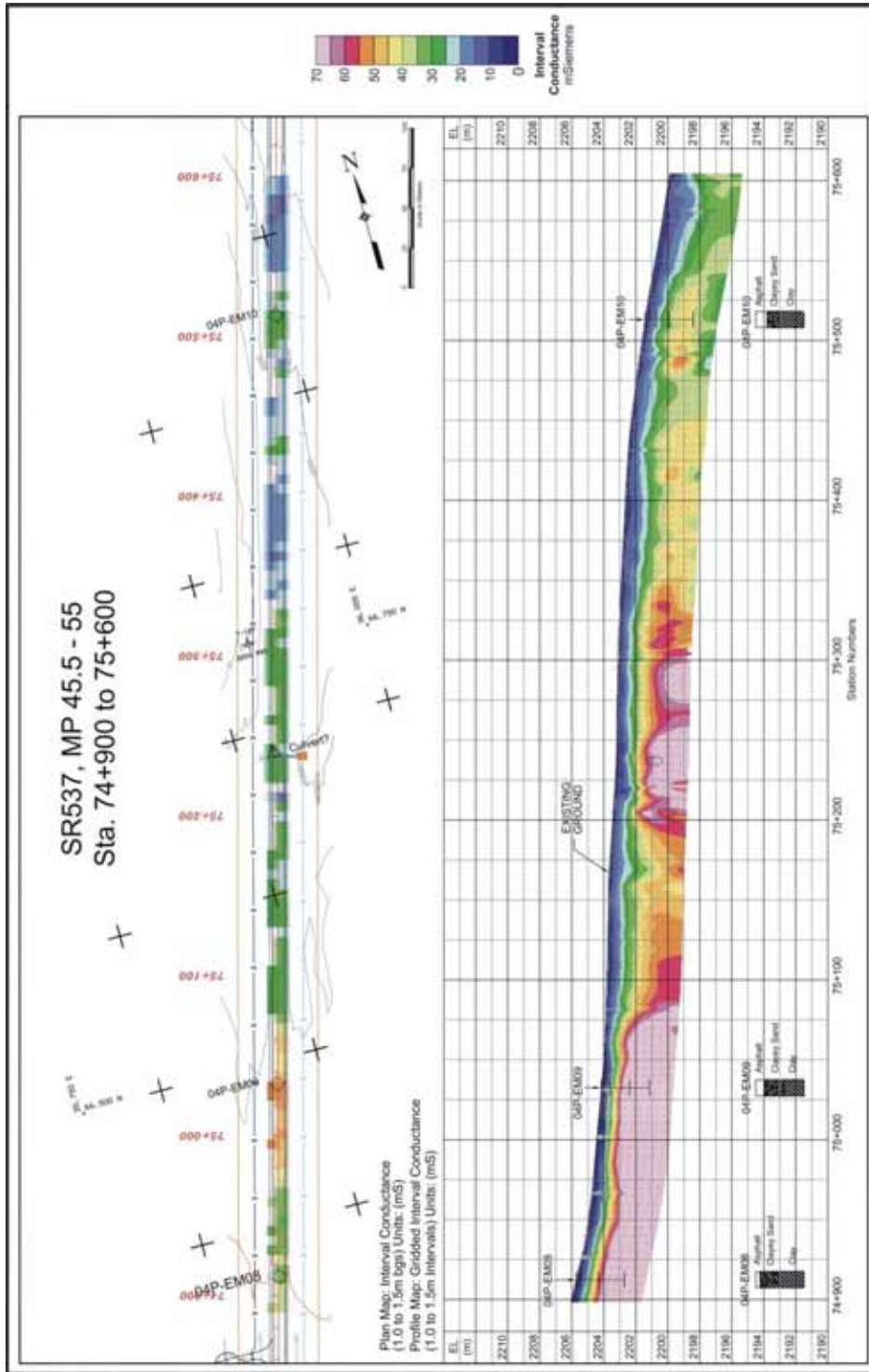


Figure 14. Plan and Profile Maps. Inverted EM31 –3 Data (Stat. 74+900 to 75+600).

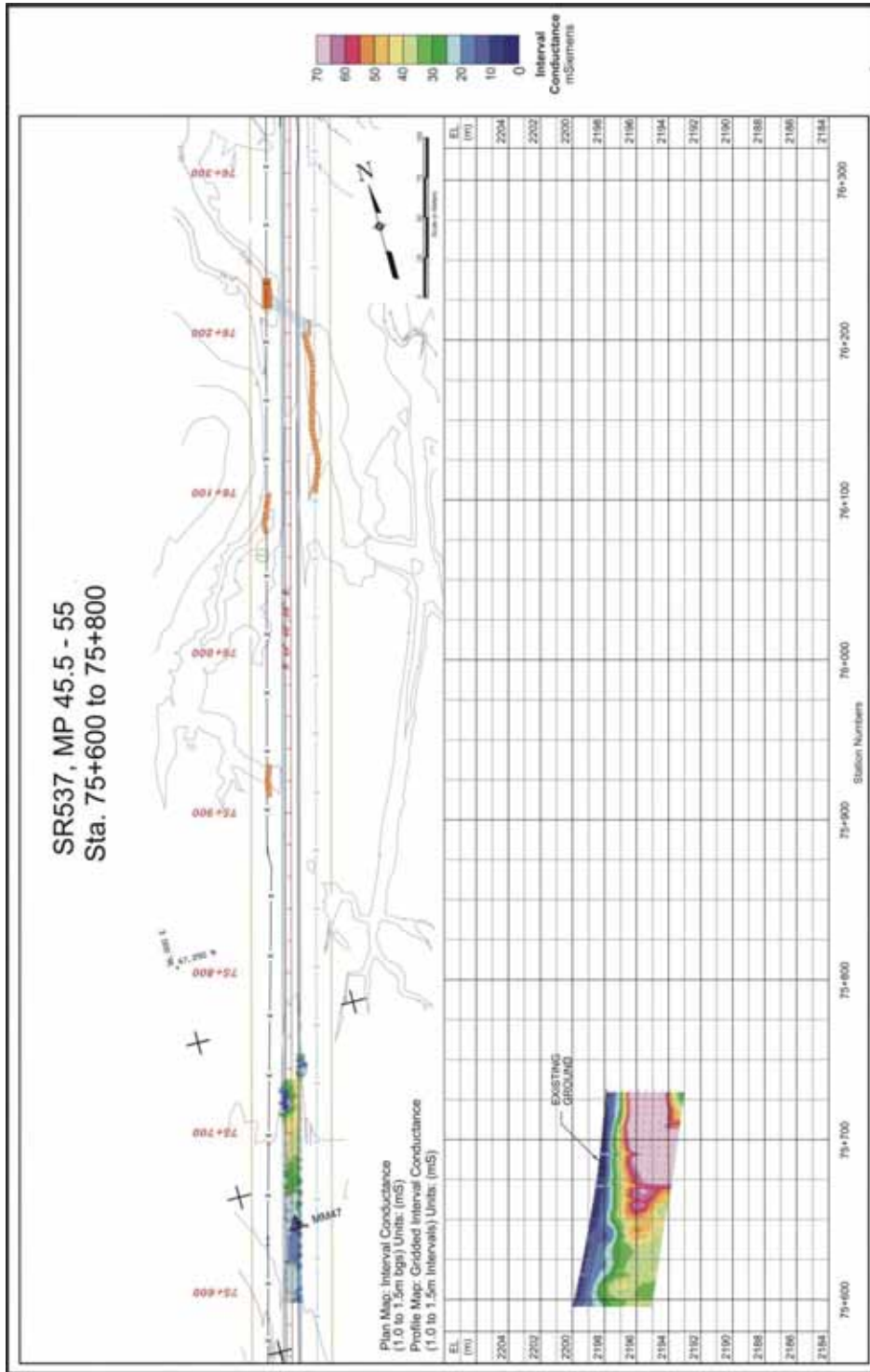


Figure 15. Plan and Profile Maps. Inverted EM31 –3 Data (Stat. 75+600 to 75+800).



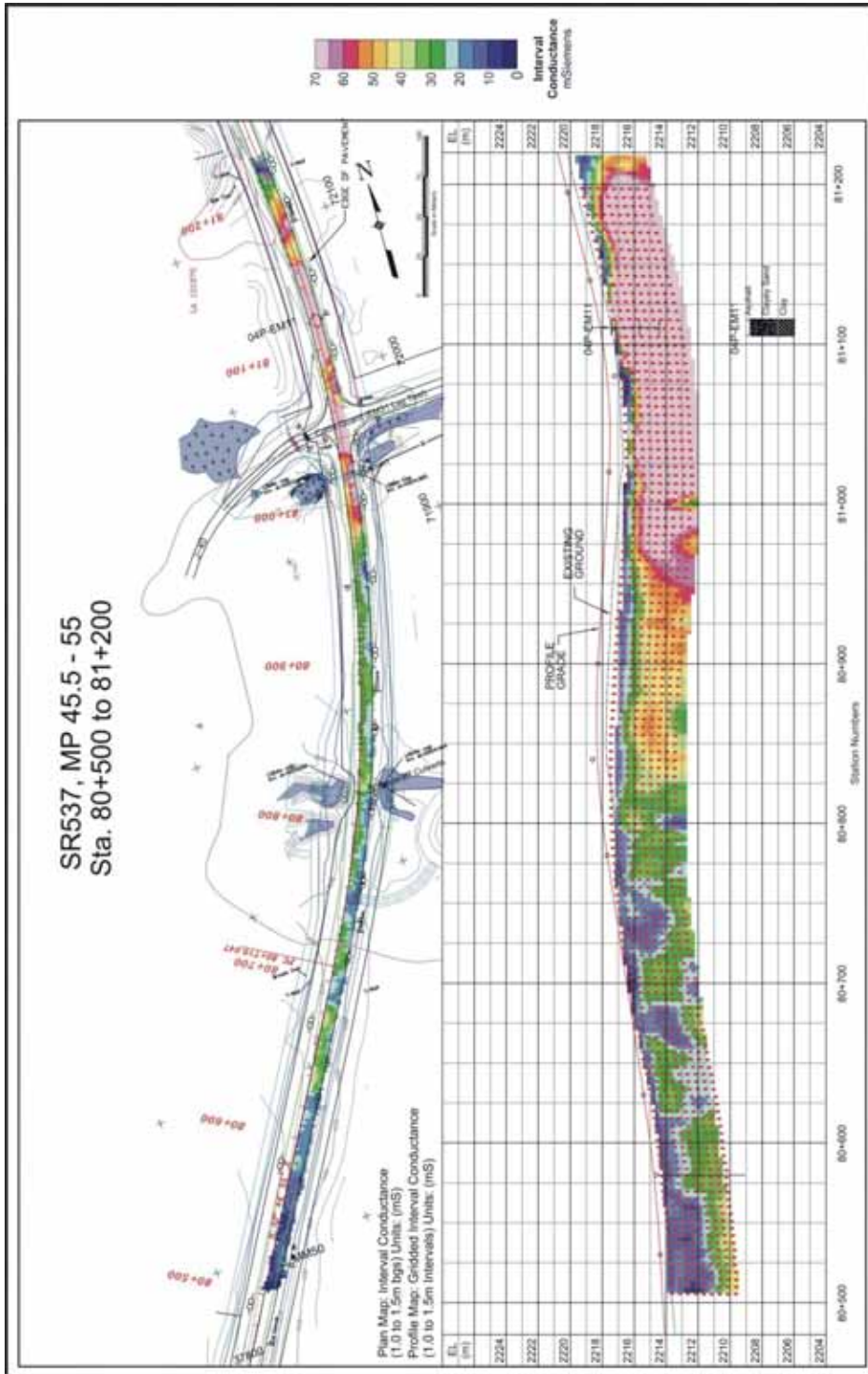


Figure 16. Plan and Profile Maps. Inverted EM31 –3 Data (Stat. 80+500 to 81+200).





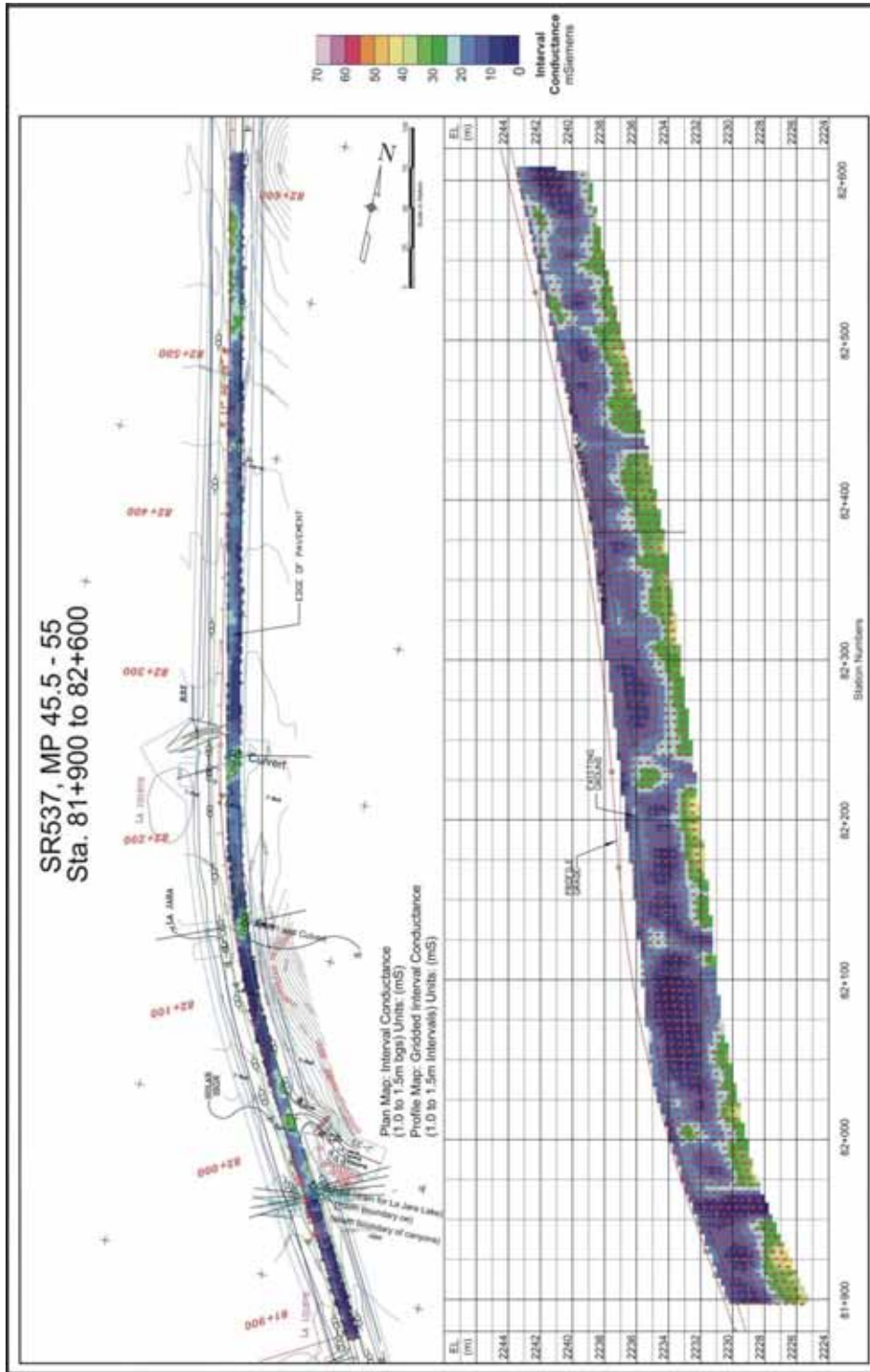


Figure 18. Plan and Profile Maps. Inverted EM31 –3 Data (Stat. 81+900 to 82+600).

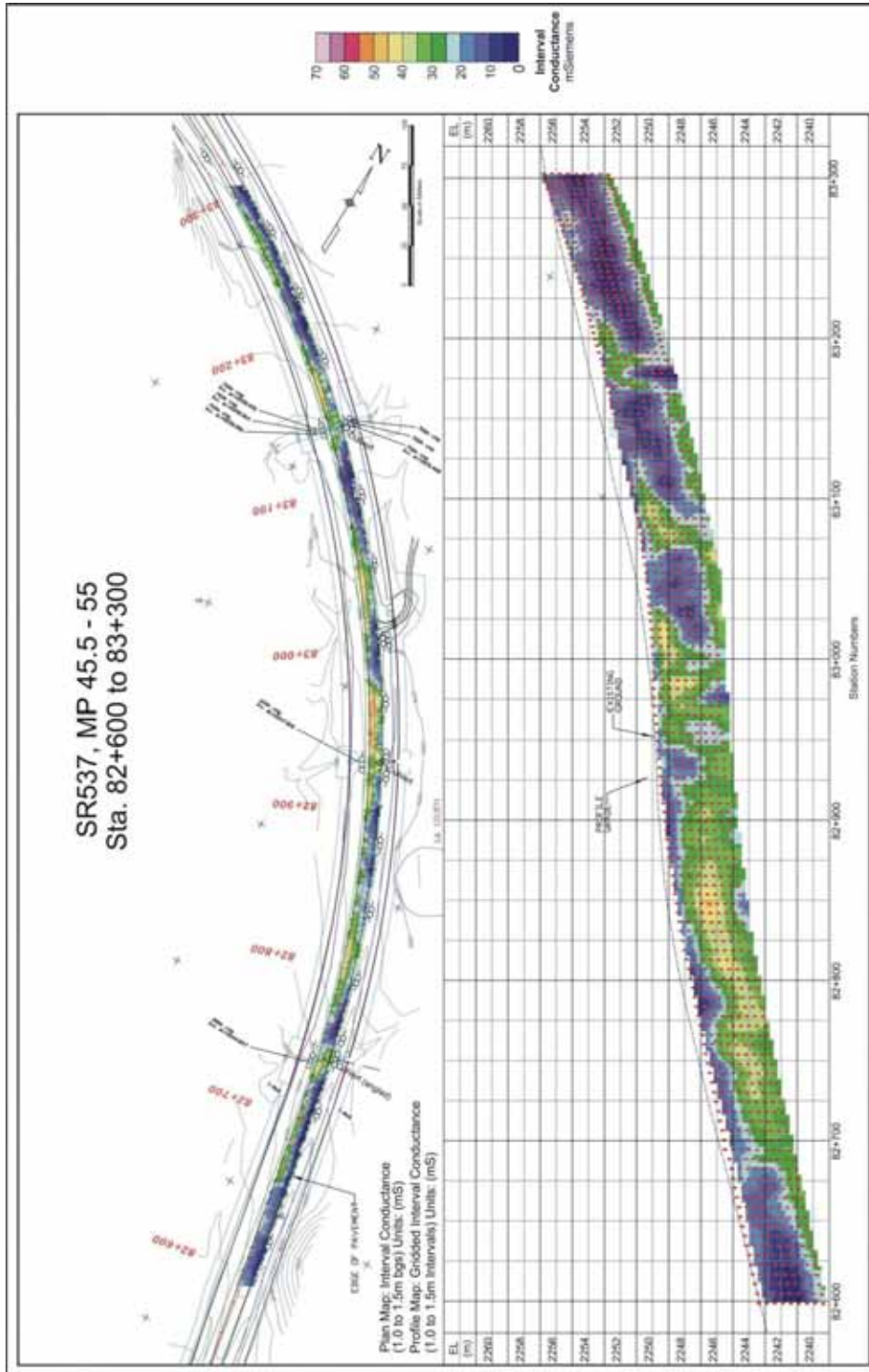


Figure 19. Plan and Profile Maps. Inverted EM31 –3 Data (Stat. 82+600 to 83+300).

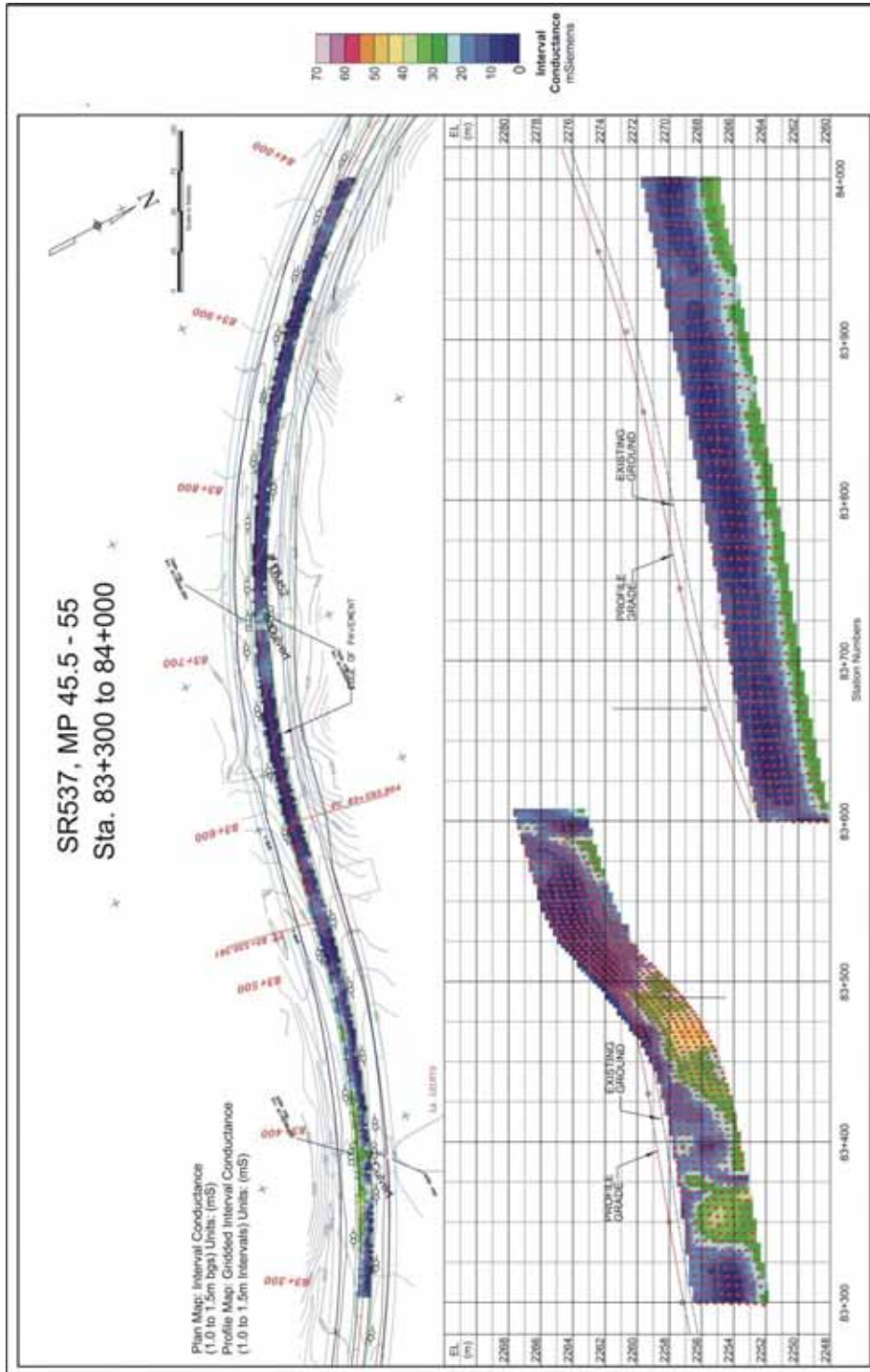


Figure 20. Plan and Profile Maps. Inverted EM31 –3 Data (Stat. 83+300 to 84+000).

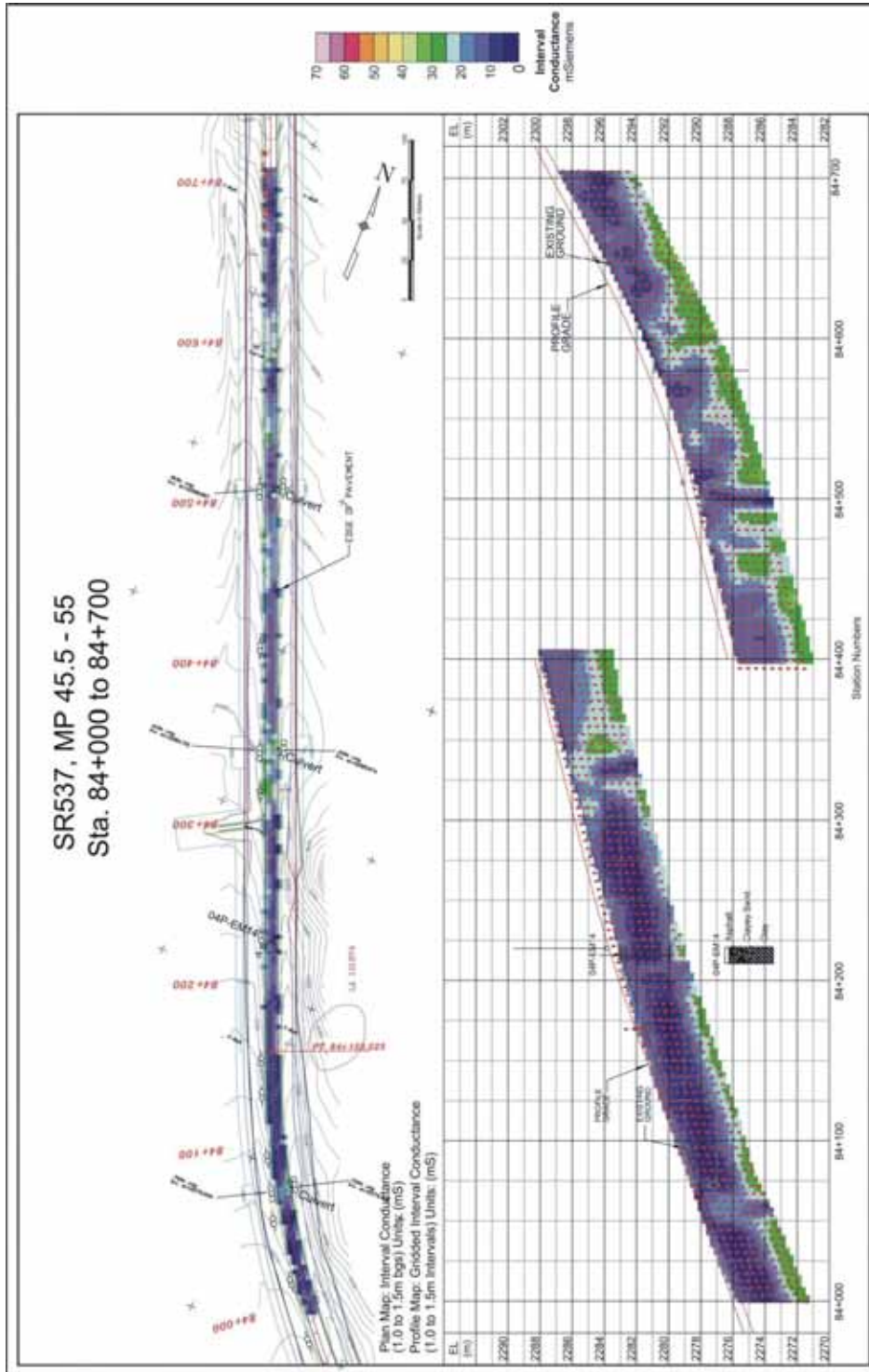


Figure 21. Plan and Profile Maps. Inverted EM31 –3 Data (Stat. 84+000 to 84+700).



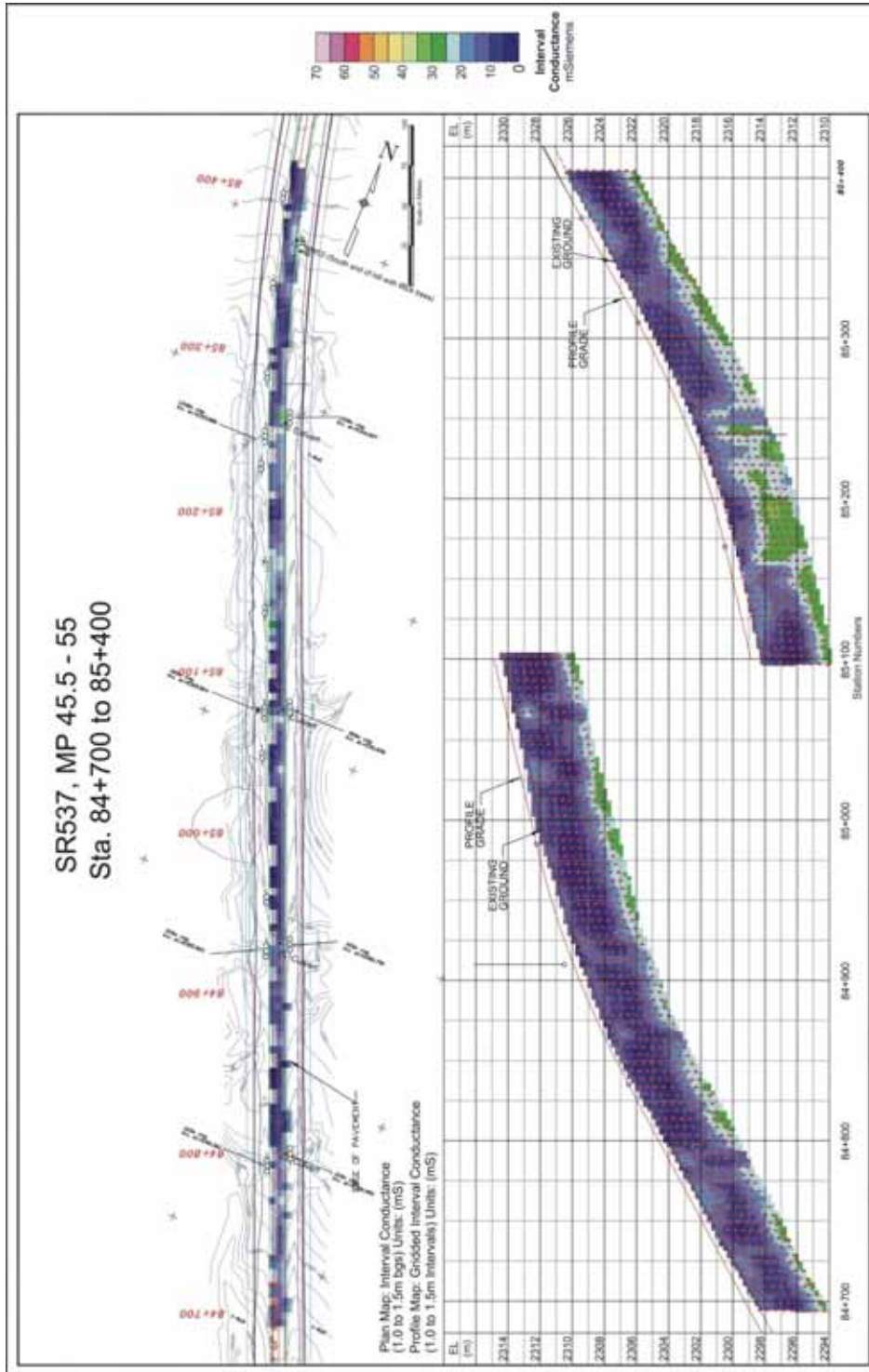


Figure 22. Plan and Profile Maps. Inverted EM31 –3 Data (Stat. 84+700 to 85+400).



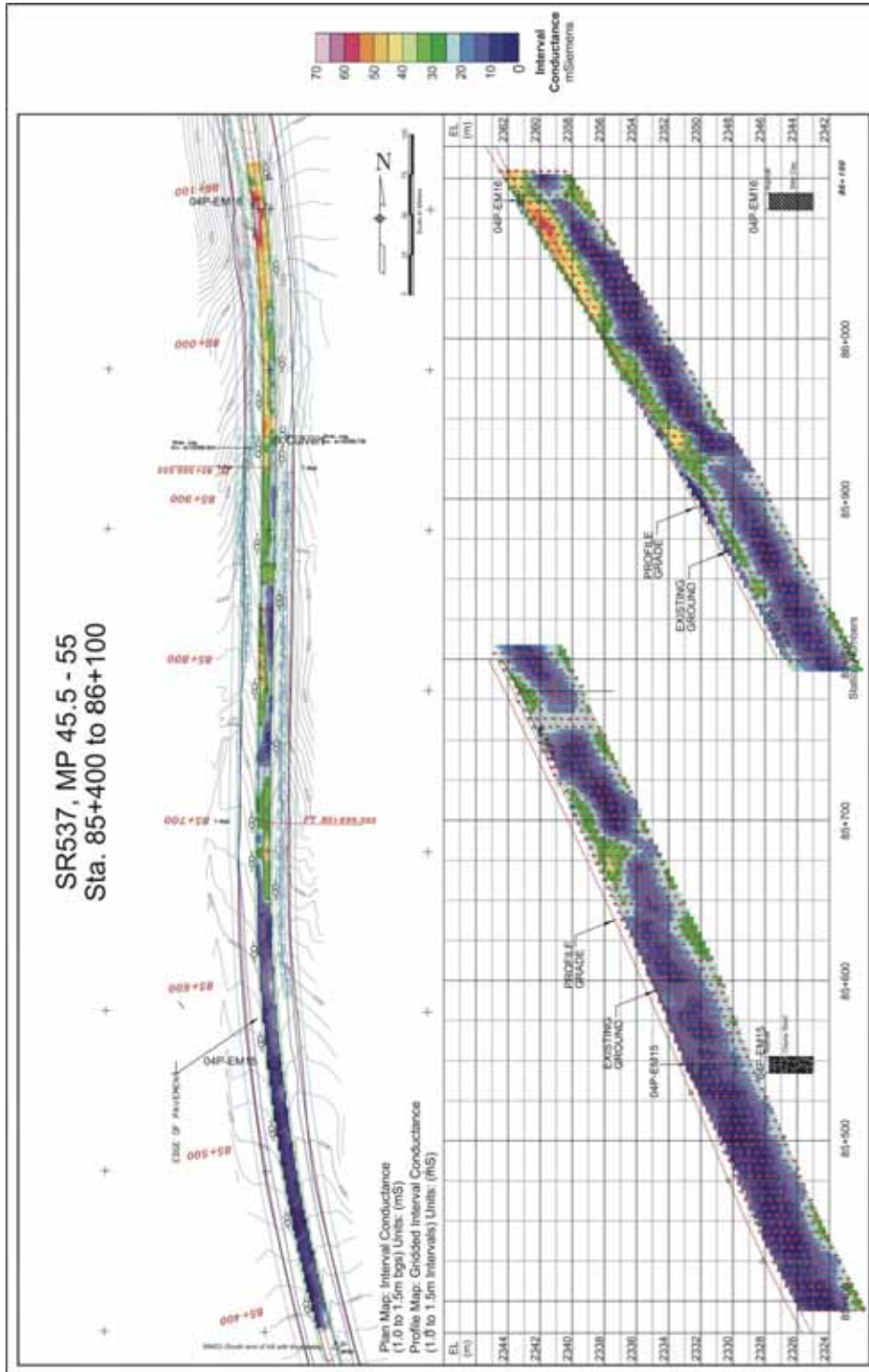


Figure 23. Plan and Profile Maps. Inverted EM31 –3 Data (Stat. 85+400 to 86+100).

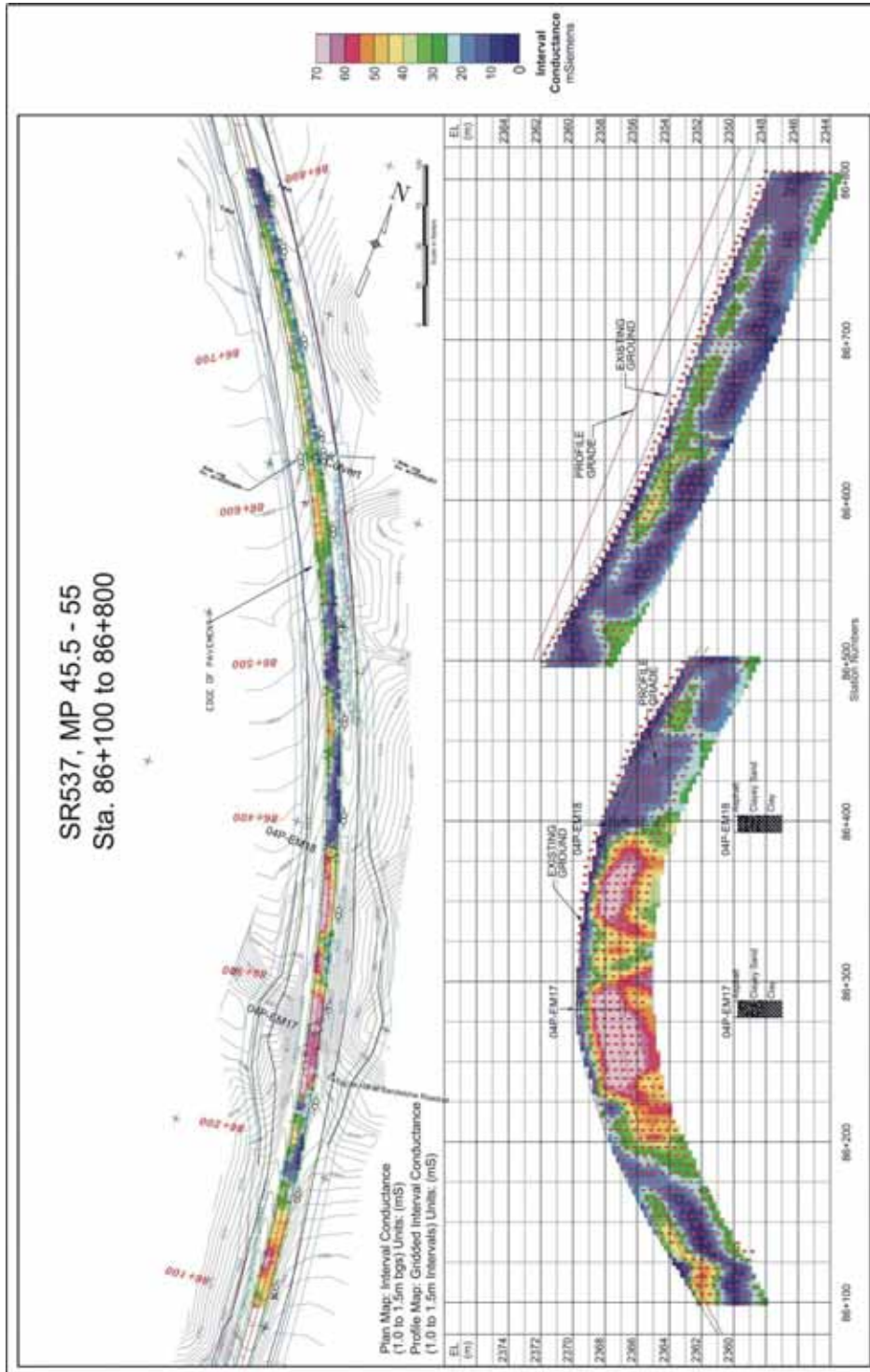


Figure 24. Plan and Profile Maps. Inverted EM31 –3 Data (Stat. 86+100 to 86+800).

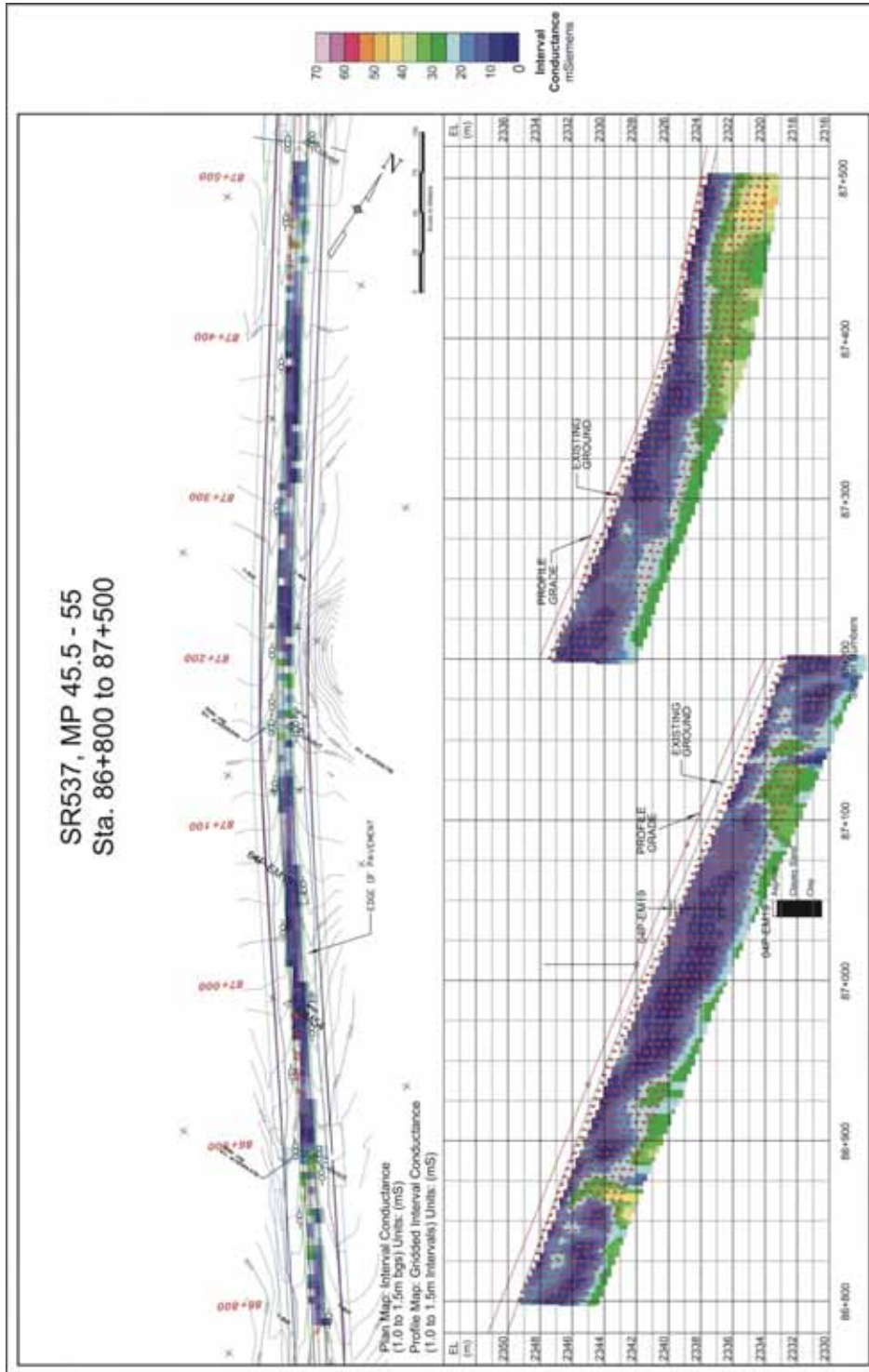


Figure 25. Plan and Profile Maps. Inverted EM31 –3 Data (Stat. 86+800 to 87+500).

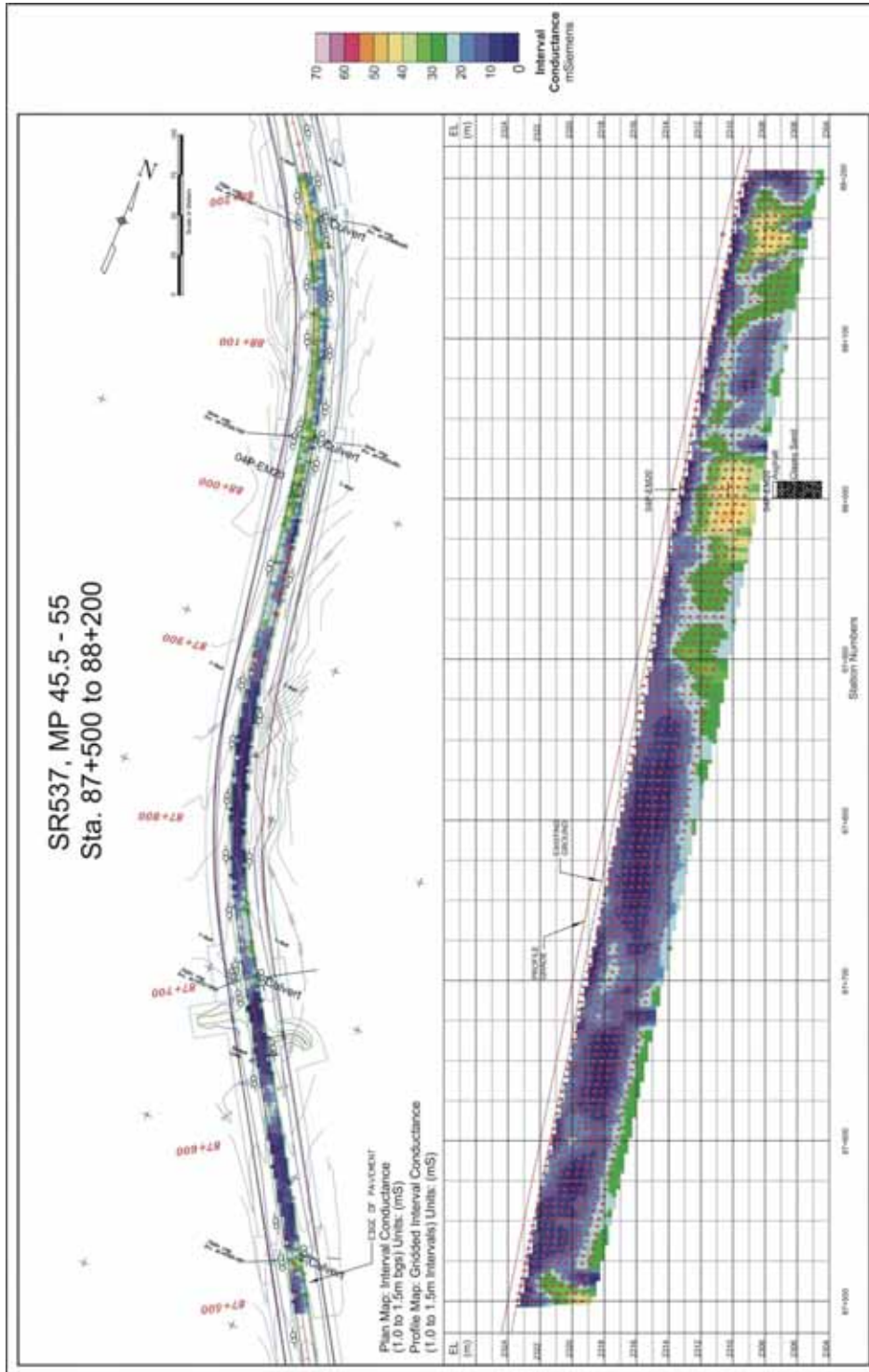


Figure 26. Plan and Profile Maps. Inverted EM31 –3 Data (Stat. 87+500 to 88+200).



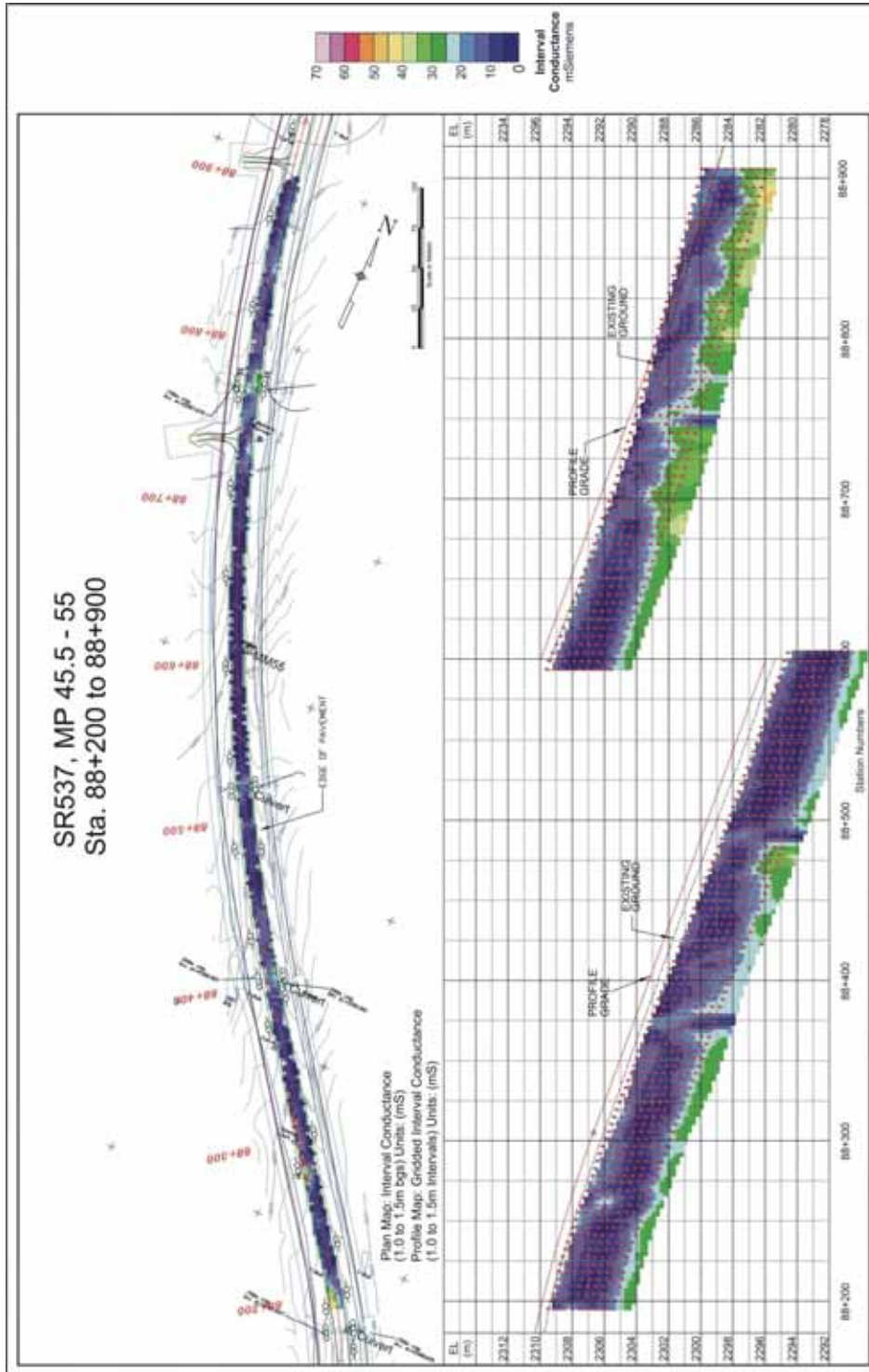


Figure 27. Plan and Profile Maps. Inverted EM31 –3 Data (Stat. 88+200 to 88+900).



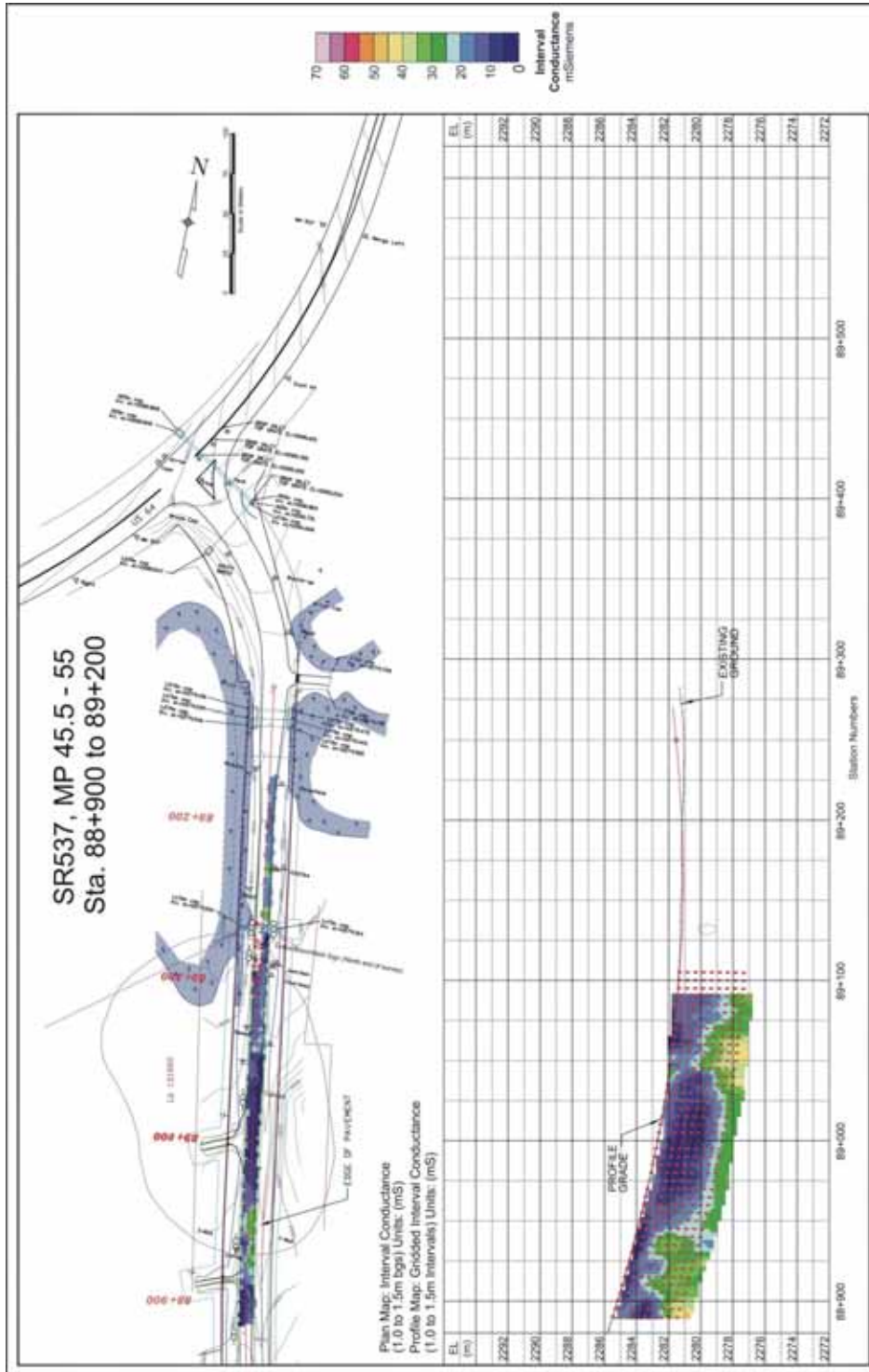


Figure 28. Plan and Profile Maps. Inverted EM31 –3 Data (Stat. 88+900 to 89+200).

