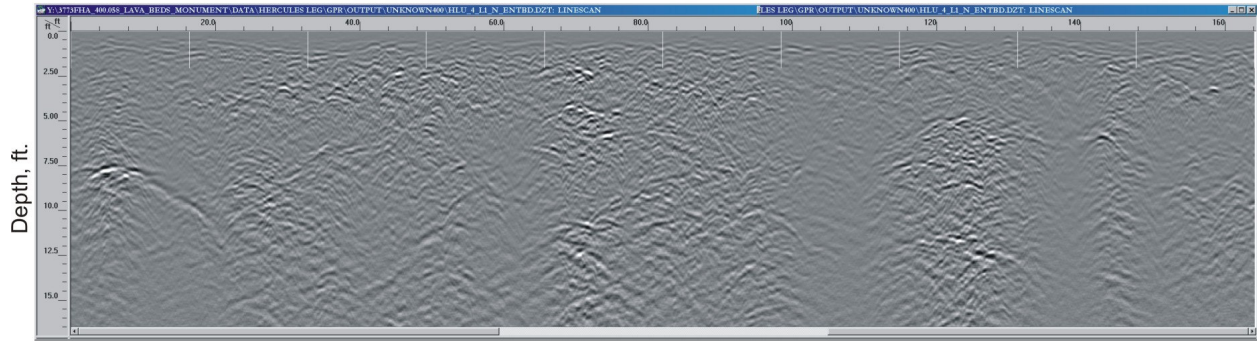


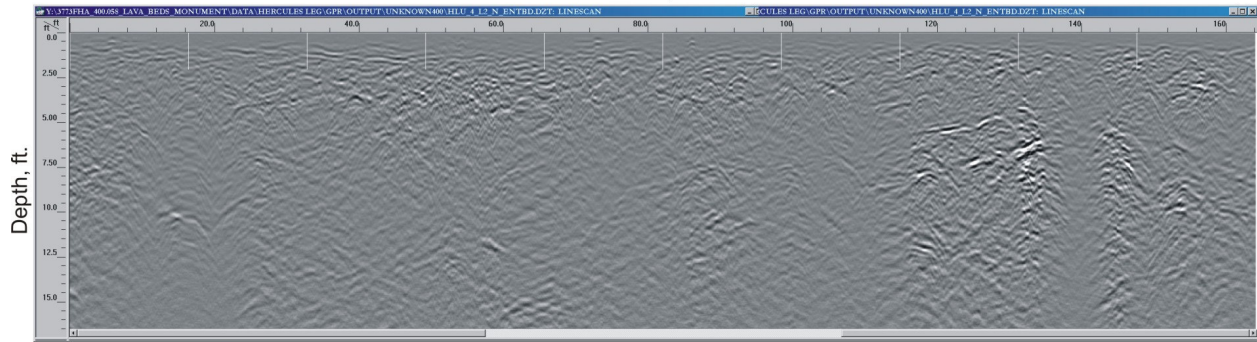
Processed GPR Data 400 MHz Antenna - Line 1  
Hercules Leg Cave - Part 2  
Distance, ft.



Note: 1 foot = .3048 meters

**Figure 81. Cross Section. GPR data.**

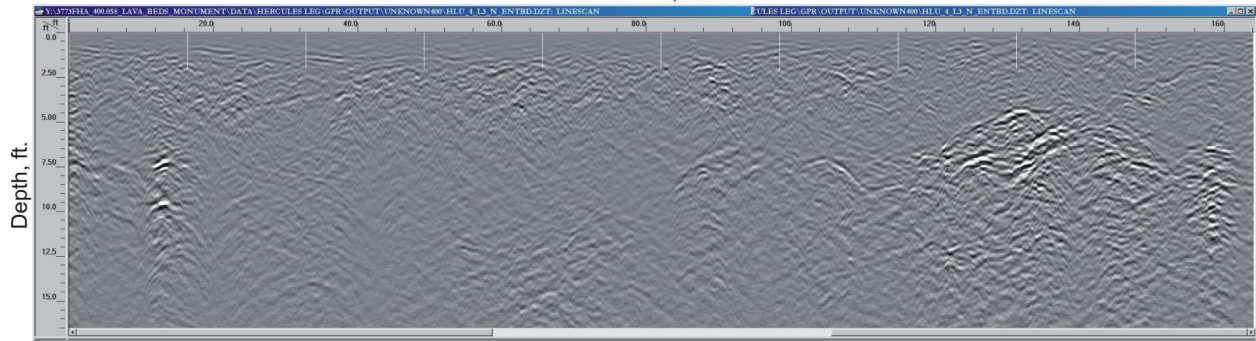
Processed GPR Data 400 MHz Antenna - Line 2  
Hercules Leg Cave - Part 2  
Distance, ft.



Note: 1 foot = .3048 meters

**Figure 82. Cross Section. GPR data.**

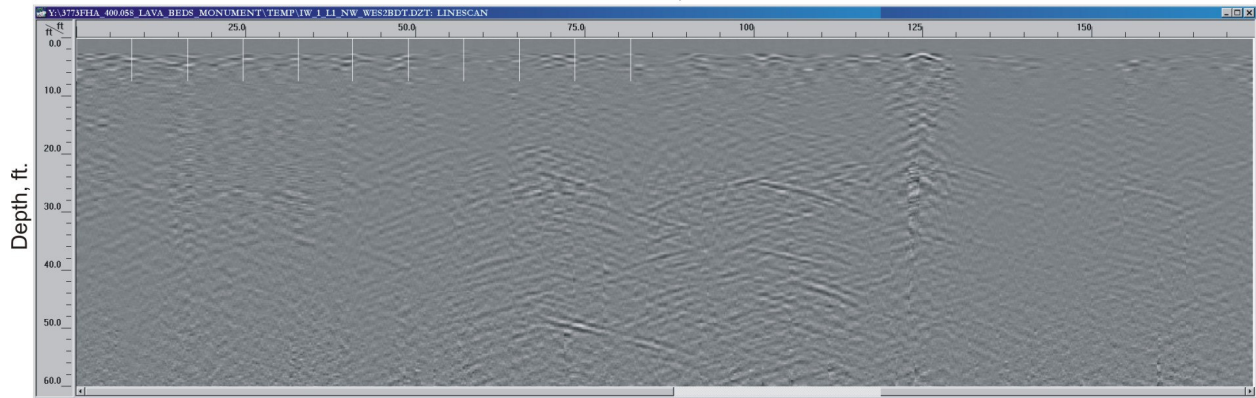
Processed GPR Data 400 MHz Antenna - Line 3  
Hercules Leg Cave - Part 2  
Distance, ft.



Note: 1 foot = .3048 meters

**Figure 83. Cross Section. GPR data.**

Processed GPR Data 100 MHz Antenna - Line 1  
Indian Well Cave  
Distance, ft.



Note: 1 foot = .3048 meters

**Figure 84. Cross Section. GPR data.**