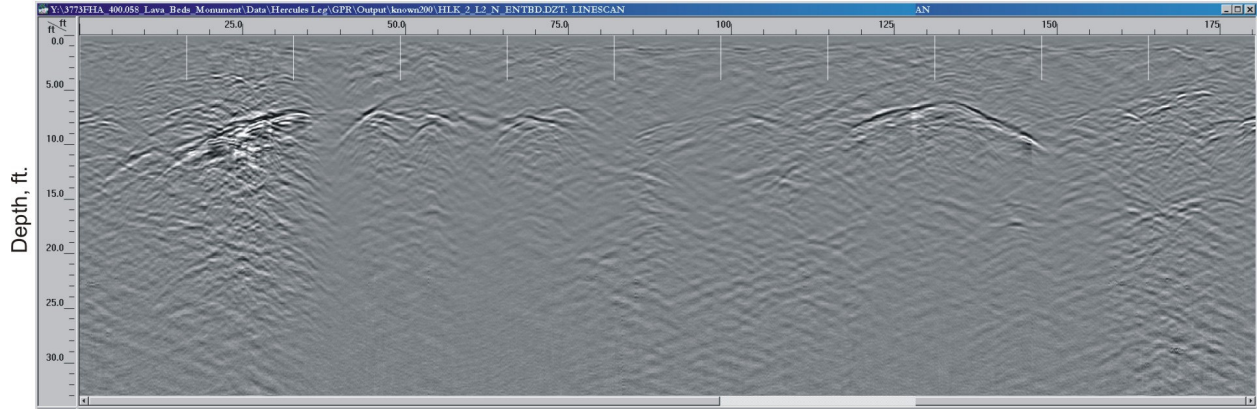


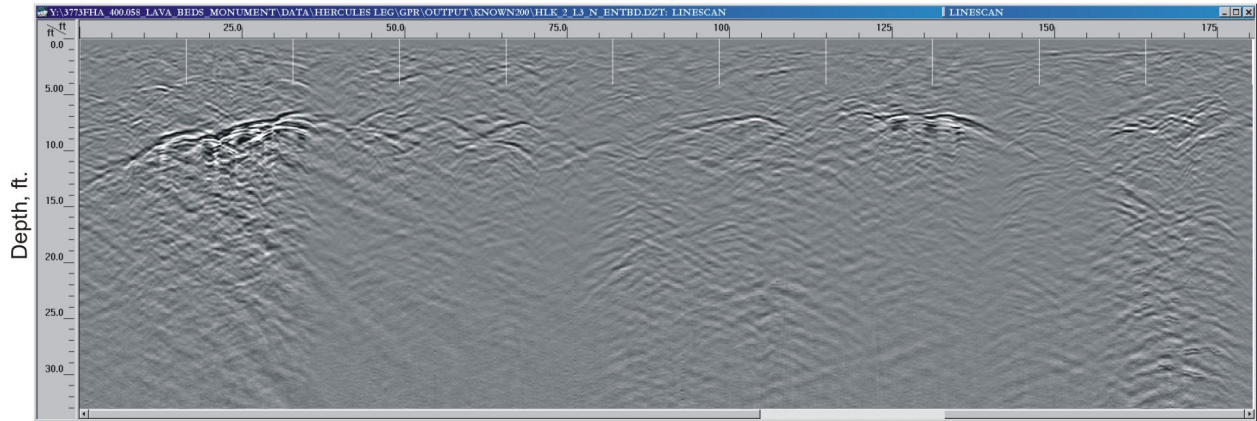
Processed GPR Data 200 MHz Antenna - Line 2
Hercules Leg Cave - Part 1
Distance, ft.



Note: 1 foot = .3048 meters

Figure 73. Cross Section. GPR data.

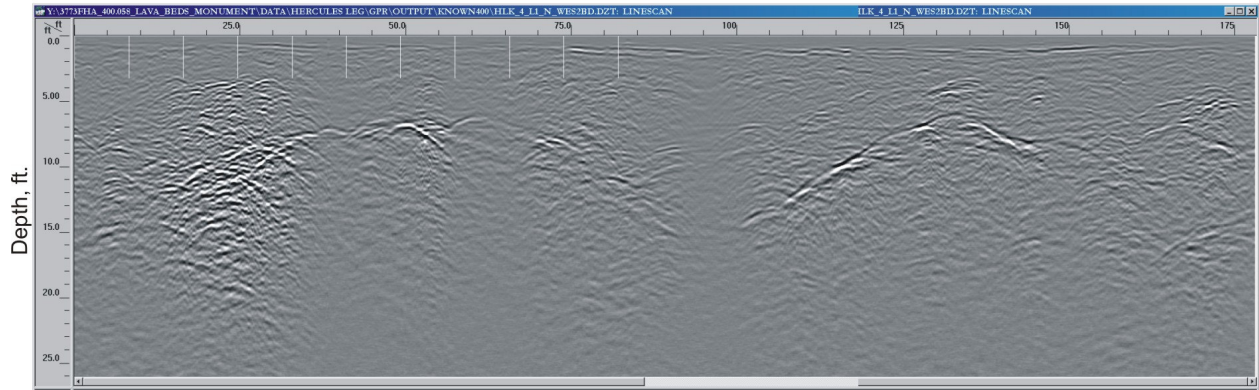
Processed GPR Data 200 MHz Antenna - Line 3
Hercules Leg Cave - Part 1
Distance, ft.



Note: 1 foot = .3048 meters

Figure 74. Cross Section. GPR data.

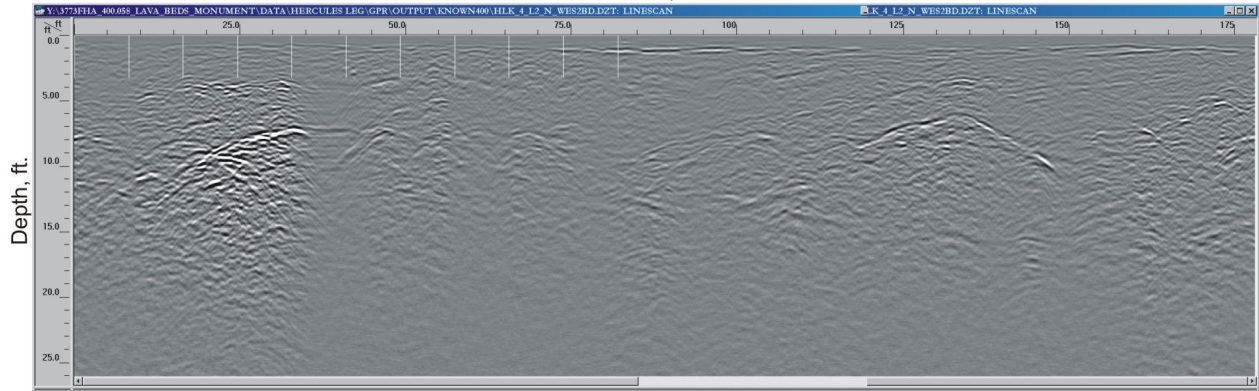
Processed GPR Data 400 MHz Antenna - Line 1
Hercules Leg Cave - Part 1
Distance, ft.



Note: 1 foot = .3048 meters

Figure 75. Cross Section. GPR data.

Processed GPR Data 400 MHz Antenna - Line 2
Hercules Leg Cave - Part 1
Distance, ft.



Note: 1 foot = .3048 meters

Figure 76. Cross Section. GPR data.