

APPENDIX B — INDUCED POLARIZATION AND RESISTIVITY SECTIONS:
EAST FORK LANDSLIDE (146 pages on CD-ROM)

TABLE OF CONTENTS

Location Maps189
Refraction Seismic Velocity Volume Images193
Refraction Seismic Velocity Cross-sections195
GAP Tomograms205

This appendix contains four location maps, a series of seismic velocity cross-sections and depth slices, and the GAP tomography. The cross-sections are keyed to the location maps. The Geostructural Analysis Package (GAP) was used by Summit Peak Technologies to create the 3D refraction tomograms.



Figure B1. Image. Outline of East Fork Landslide.

**APPENDIX B — INDUCED POLARIZATION AND RESISTIVITY SECTIONS:
EAST FORK LANDSLIDE (146 pages on CD-ROM)**



Figure B2. Image. Yellow X's are the receiver (geophone) locations for the East Fork survey.

APPENDIX B — INDUCED POLARIZATION AND RESISTIVITY SECTIONS:
EAST FORK LANDSLIDE (146 pages on CD-ROM)



Figure B3. Image. Location of cross-sections based on receiver locations.

APPENDIX B — INDUCED POLARIZATION AND RESISTIVITY SECTIONS:
EAST FORK LANDSLIDE (146 pages on CD-ROM)



Figure B4. Image. Pipeline and borehole (purple circle) locations relative to the cross-sections locations.

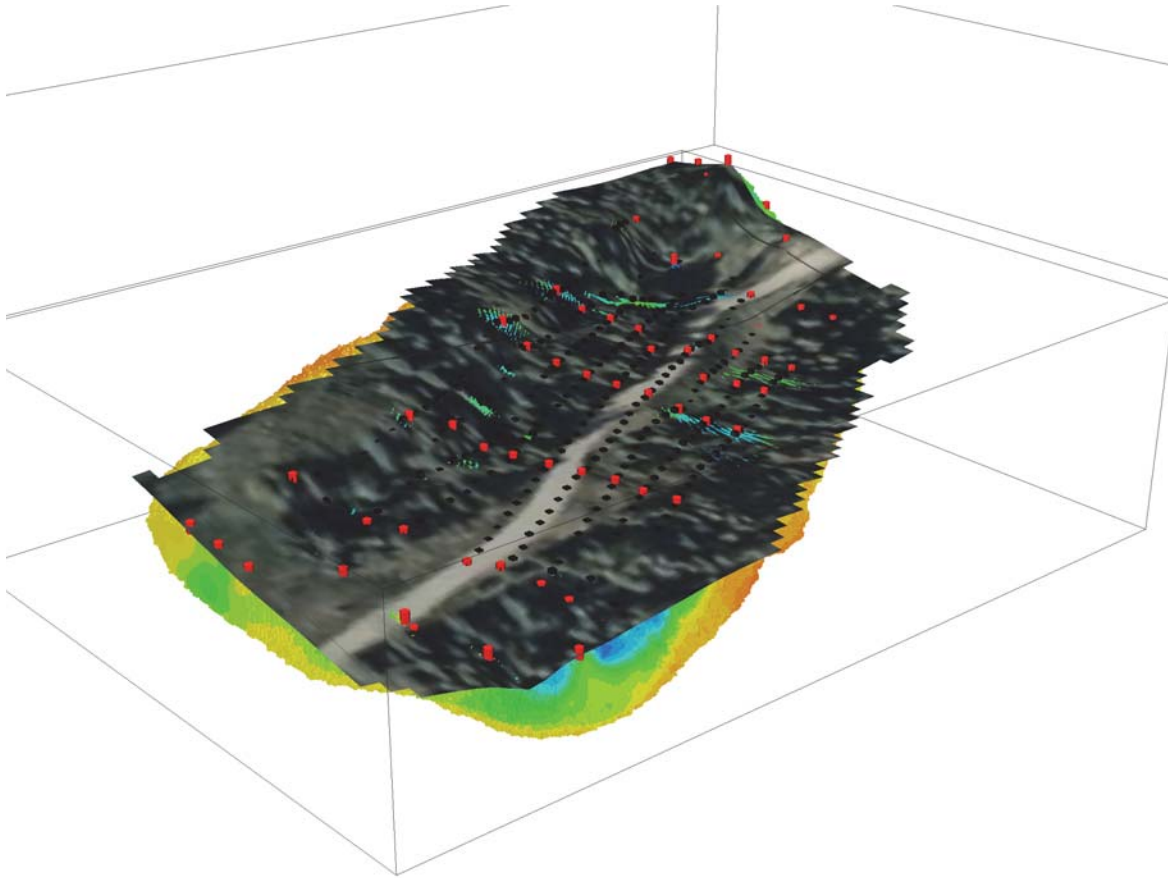


Figure B5. Image. Surface image with receiver locations draped over seismic refraction velocity volume.

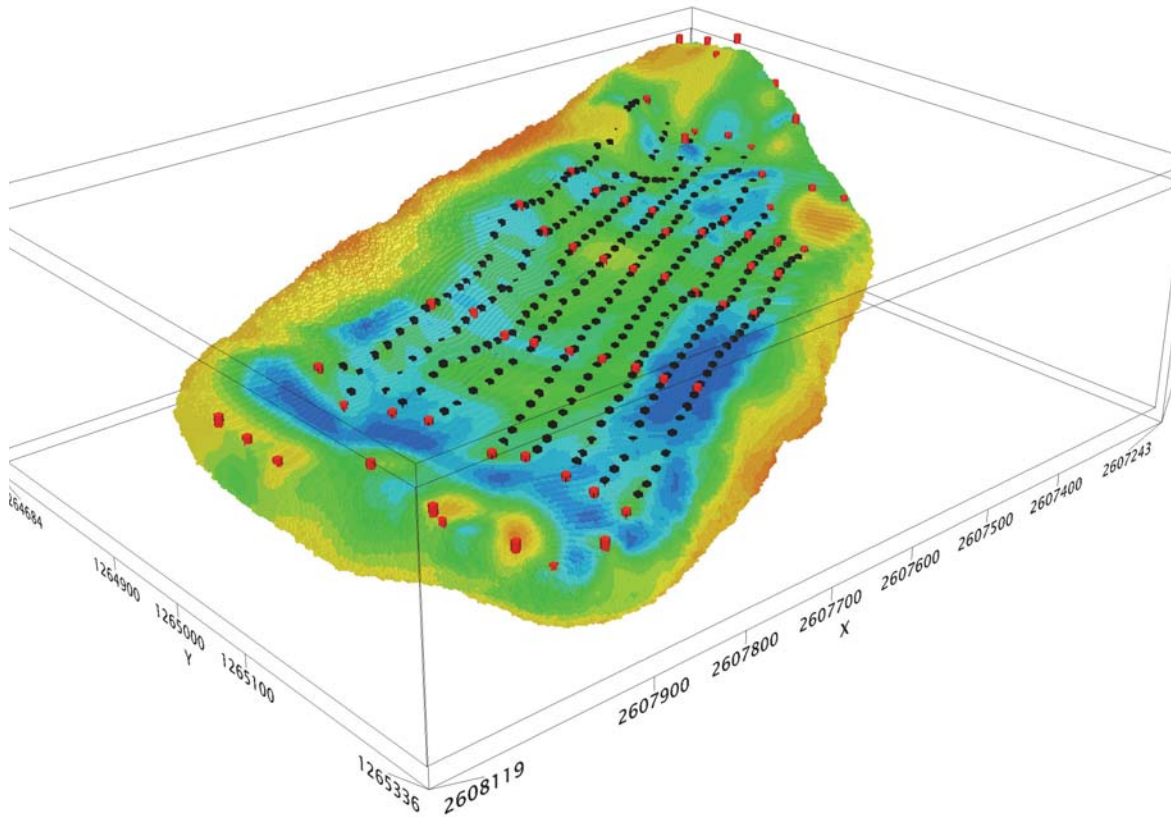


Figure B6. Image. Seismic refraction velocity volume with receiver locations.

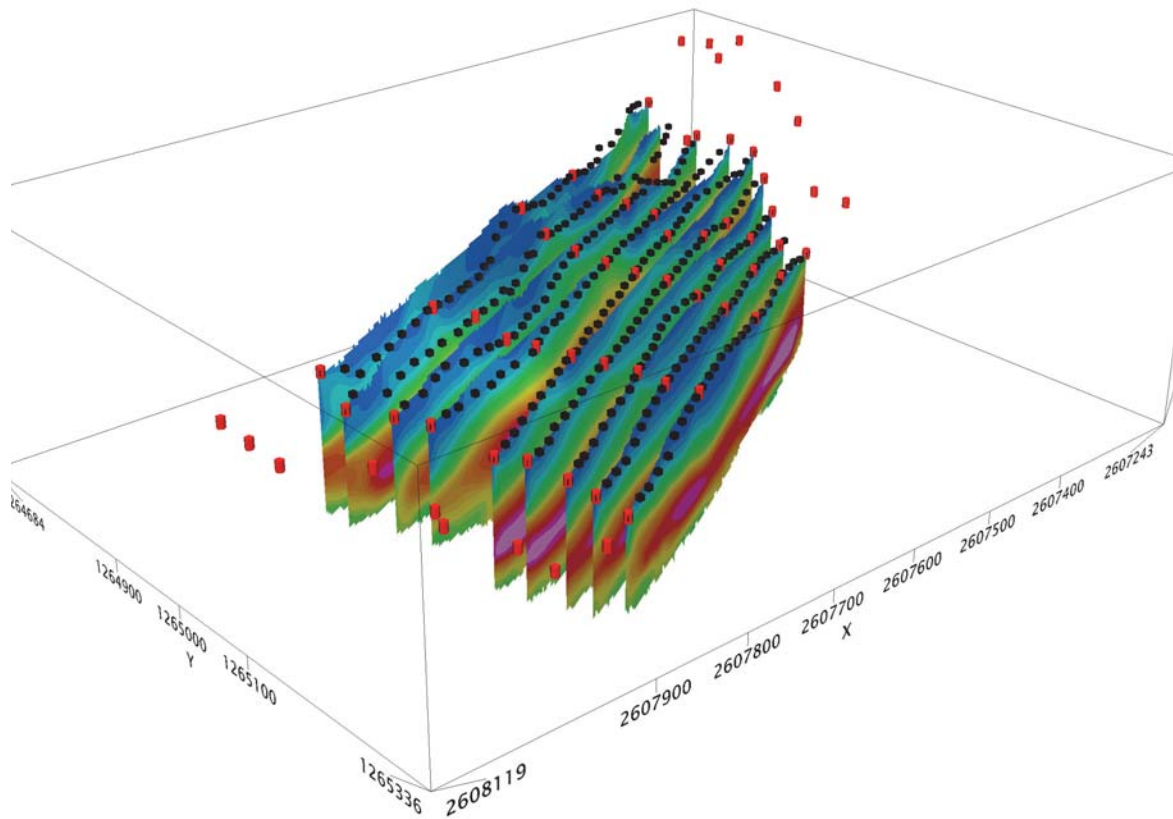
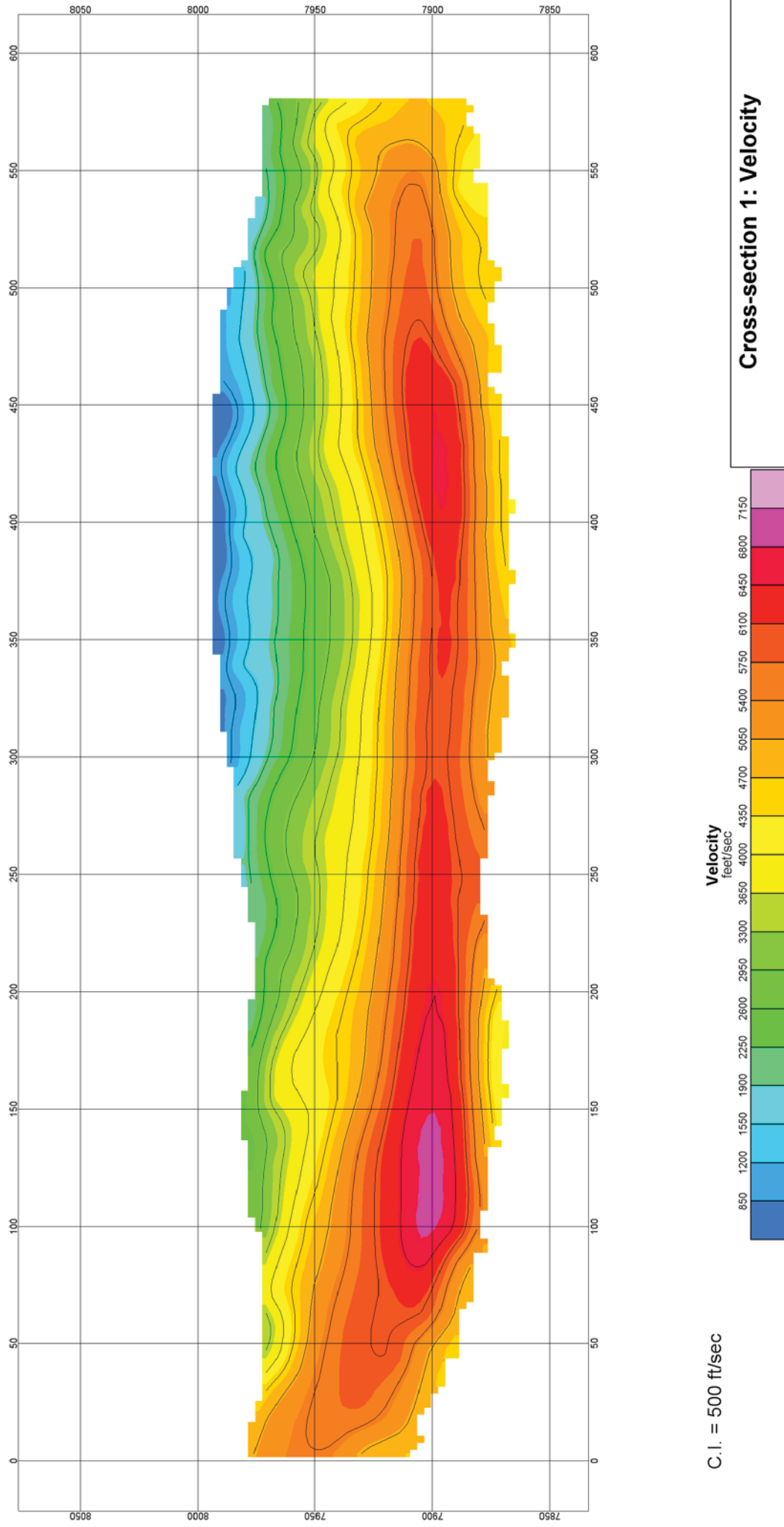
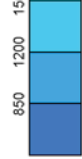


Figure B7. Image. Location of cross-sections based on receiver locations.

APPENDIX B — INDUCED POLARIZATION AND RESISTIVITY SECTIONS:
EAST FORK LANDSLIDE (146 pages on CD-ROM)



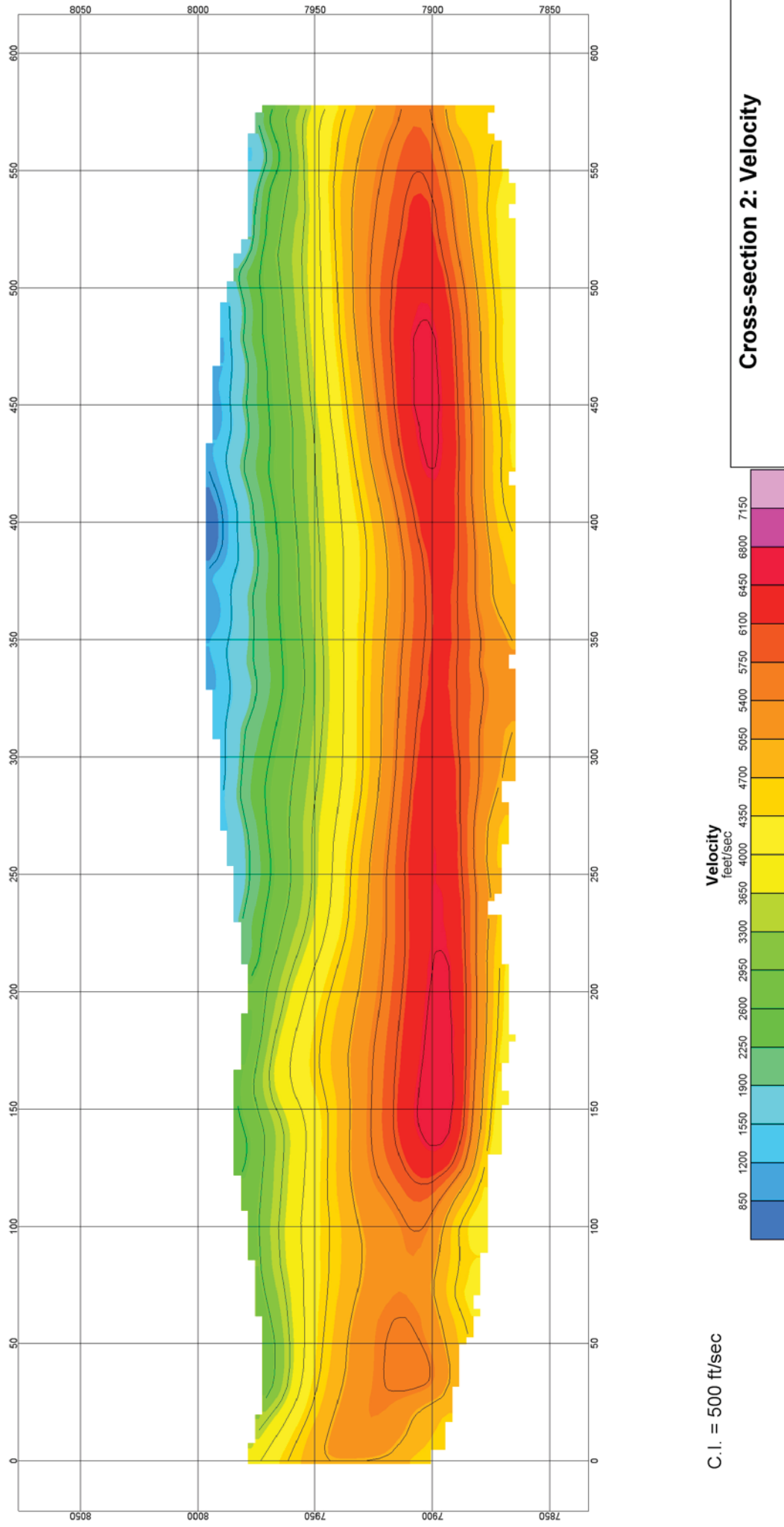
C.I. = 500 ft/sec



Cross-section 1: Velocity

East Fork Slide / Wolf Creek Pass
Induced Polarization and Seismic for Subsurface Investigation
Central Federal Lands Highway Division

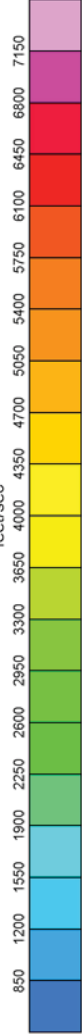
APPENDIX B — INDUCED POLARIZATION AND RESISTIVITY SECTIONS:
EAST FORK LANDSLIDE (146 pages on CD-ROM)



C.I. = 500 ft/sec



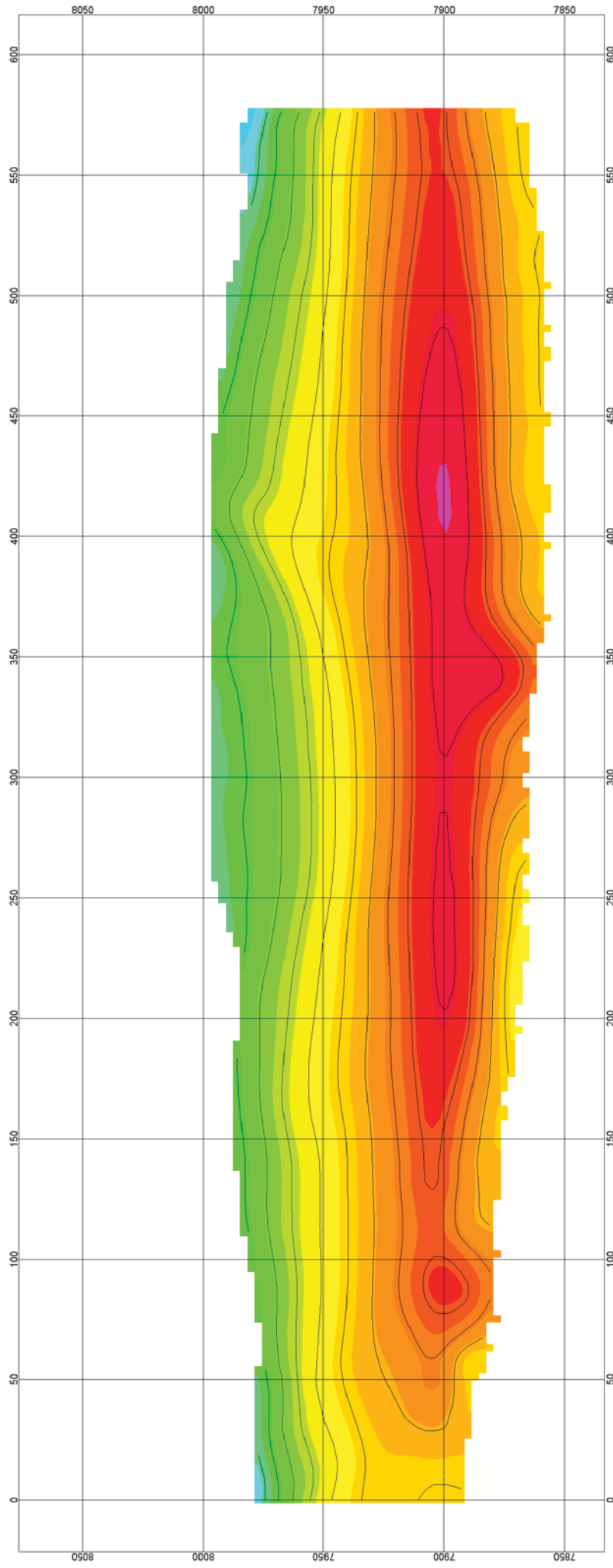
Velocity
feet/sec



Cross-section 2: Velocity

East Fork Slide / Wolf Creek Pass
Induced Polarization and Seismic for Subsurface Investigation
Central Federal Lands Highway Division

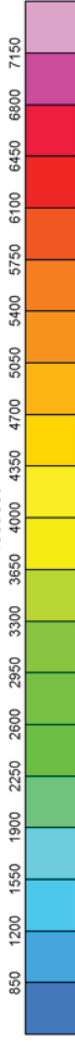
APPENDIX B — INDUCED POLARIZATION AND RESISTIVITY SECTIONS:
EAST FORK LANDSLIDE (146 pages on CD-ROM)



C.I. = 500 ft/sec



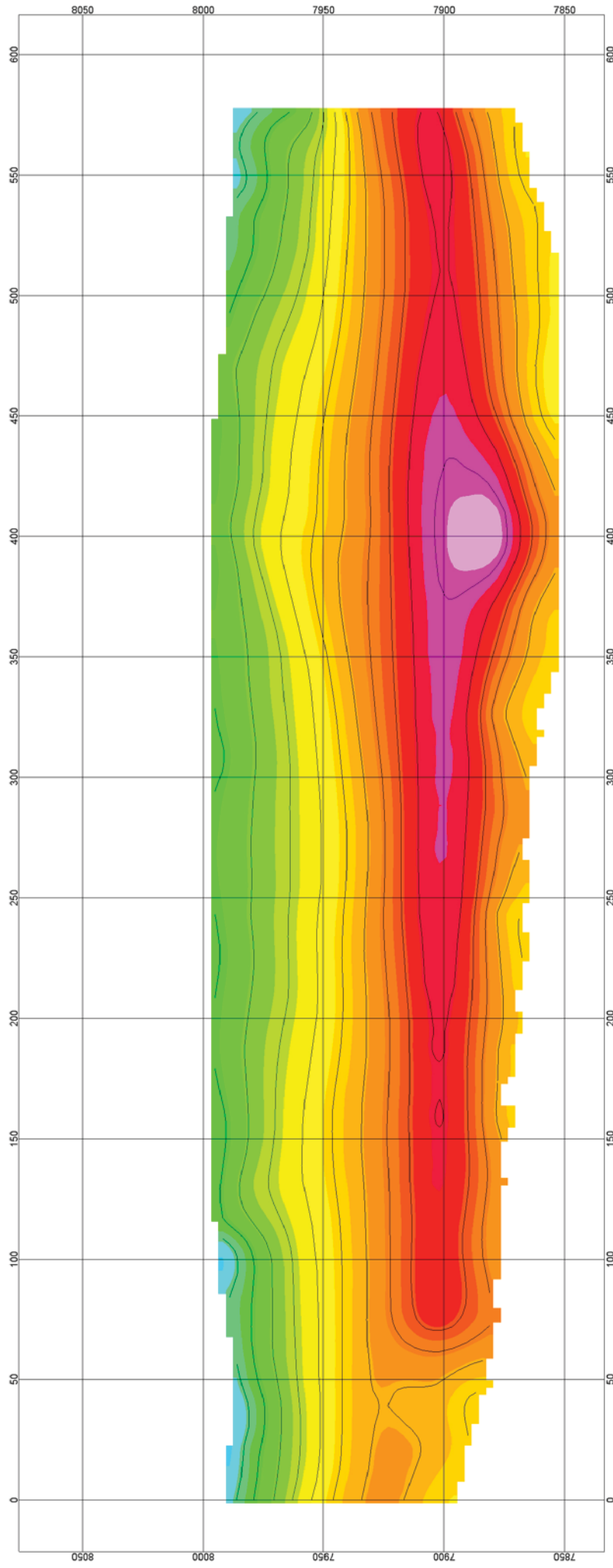
Velocity
feet/sec



Cross-section 3: Velocity

East Fork Slide / Wolf Creek Pass
Induced Polarization and Seismic for Subsurface Investigation
Central Federal Lands Highway Division

APPENDIX B — INDUCED POLARIZATION AND RESISTIVITY SECTIONS:
EAST FORK LANDSLIDE (146 pages on CD-ROM)



C.I. = 500 ft/sec



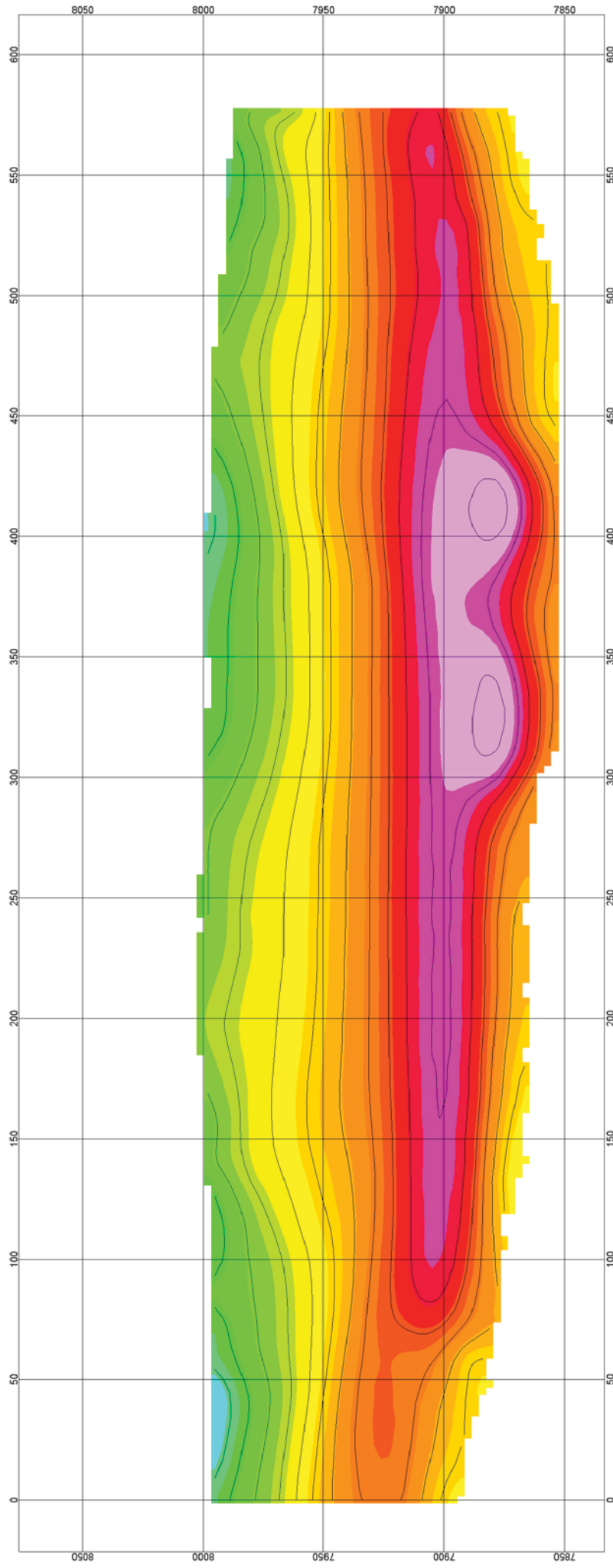
Velocity
feet/sec



Cross-section 4: Velocity

East Fork Slide / Wolf Creek Pass
Induced Polarization and Seismic for Subsurface Investigation
Central Federal Lands Highway Division

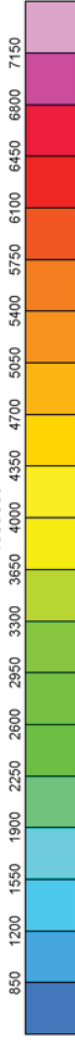
APPENDIX B — INDUCED POLARIZATION AND RESISTIVITY SECTIONS:
EAST FORK LANDSLIDE (146 pages on CD-ROM)



C.I. = 500 ft/sec



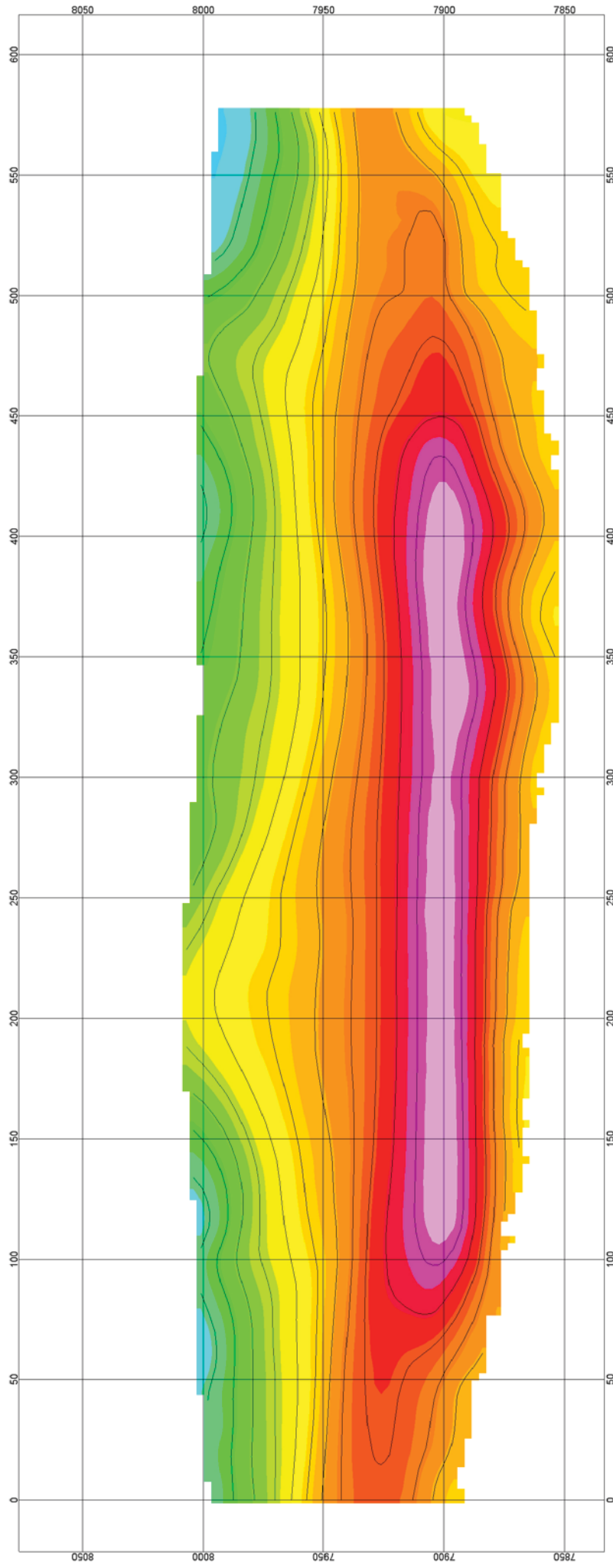
Velocity
feet/sec



Cross-section 5: Velocity

East Fork Slide / Wolf Creek Pass
Induced Polarization and Seismic for Subsurface Investigation
Central Federal Lands Highway Division

APPENDIX B — INDUCED POLARIZATION AND RESISTIVITY SECTIONS:
EAST FORK LANDSLIDE (146 pages on CD-ROM)



C.I. = 500 ft/sec



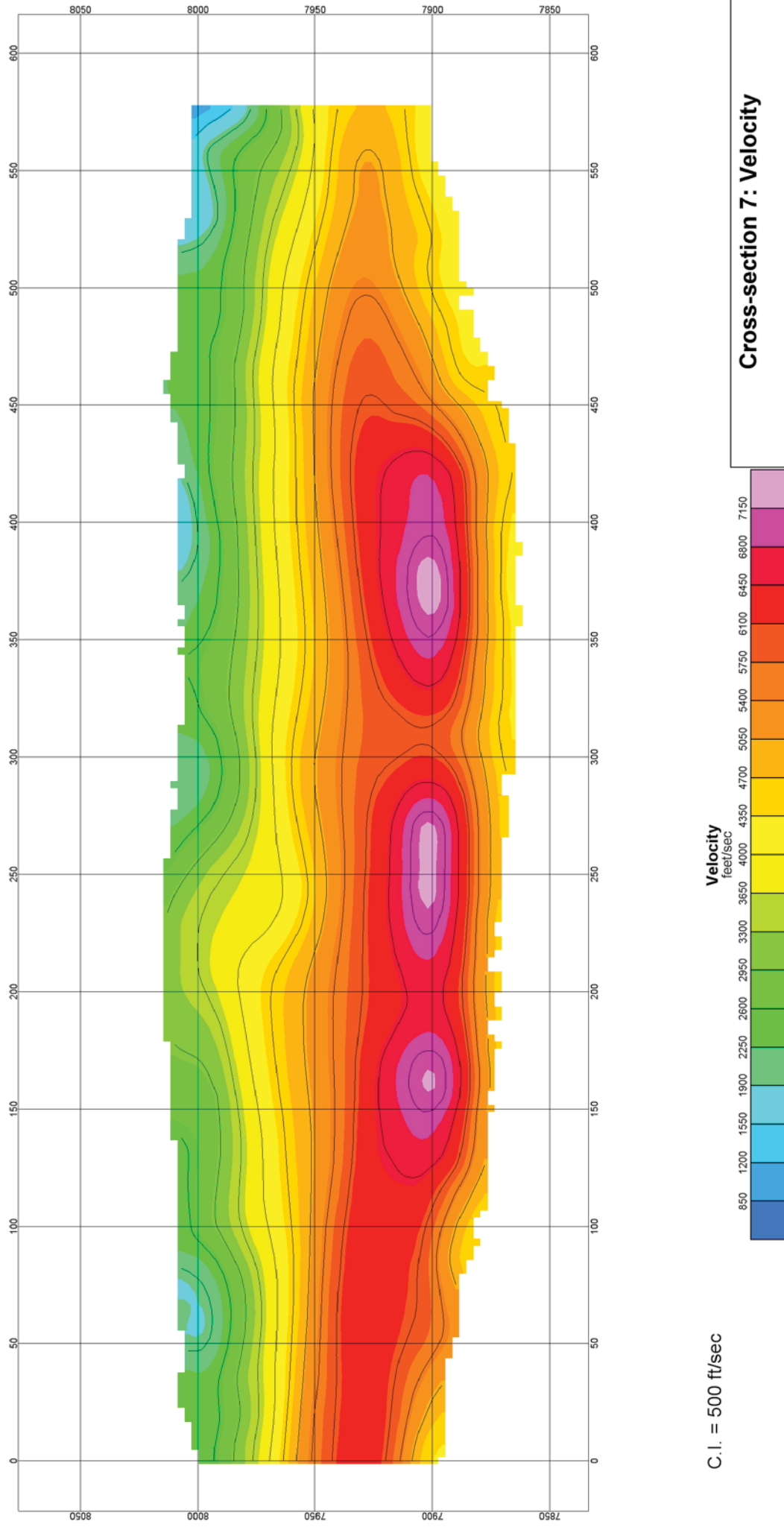
Velocity
feet/sec



Cross-section 6: Velocity

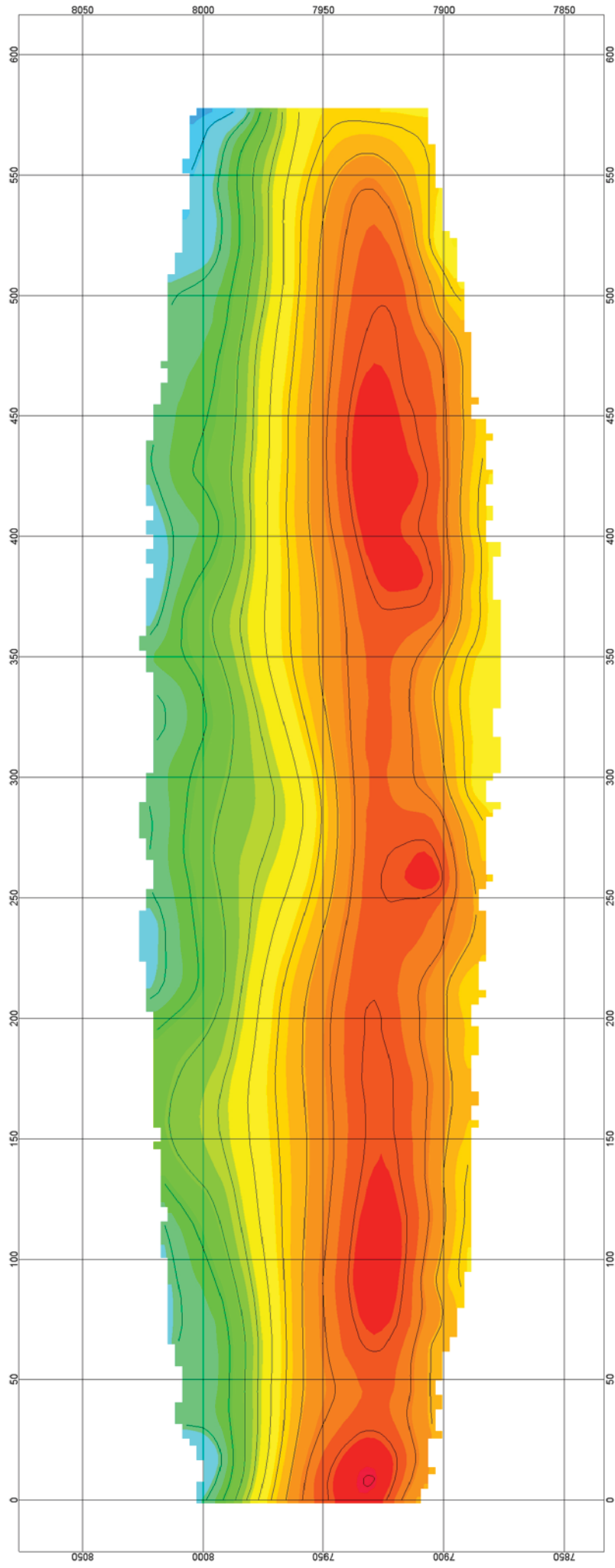
East Fork Slide / Wolf Creek Pass
Induced Polarization and Seismic for Subsurface Investigation
Central Federal Lands Highway Division

APPENDIX B — INDUCED POLARIZATION AND RESISTIVITY SECTIONS:
EAST FORK LANDSLIDE (146 pages on CD-ROM)



Cross-section 7: Velocity
 East Fork Slide / Wolf Creek Pass
 Induced Polarization and Seismic for Subsurface Investigation
 Central Federal Lands Highway Division

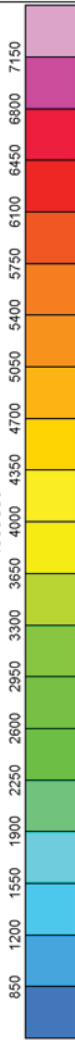
APPENDIX B — INDUCED POLARIZATION AND RESISTIVITY SECTIONS:
EAST FORK LANDSLIDE (146 pages on CD-ROM)



C.I. = 500 ft/sec



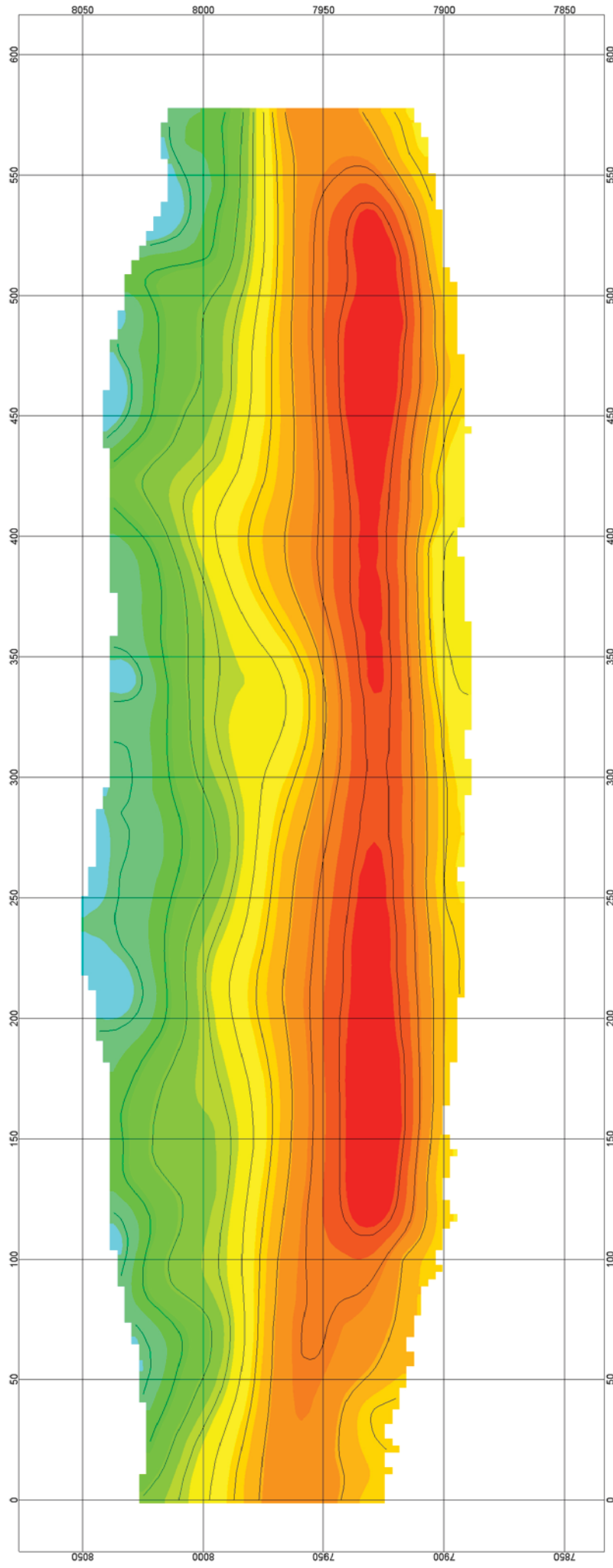
Velocity
feet/sec



Cross-section 8: Velocity

East Fork Slide / Wolf Creek Pass
Induced Polarization and Seismic for Subsurface Investigation
Central Federal Lands Highway Division

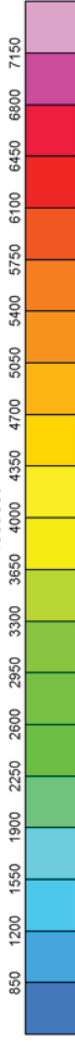
APPENDIX B — INDUCED POLARIZATION AND RESISTIVITY SECTIONS:
EAST FORK LANDSLIDE (146 pages on CD-ROM)



C.I. = 500 ft/sec



Velocity
feet/sec



Cross-section 9: Velocity

East Fork Slide / Wolf Creek Pass
Induced Polarization and Seismic for Subsurface Investigation
Central Federal Lands Highway Division

