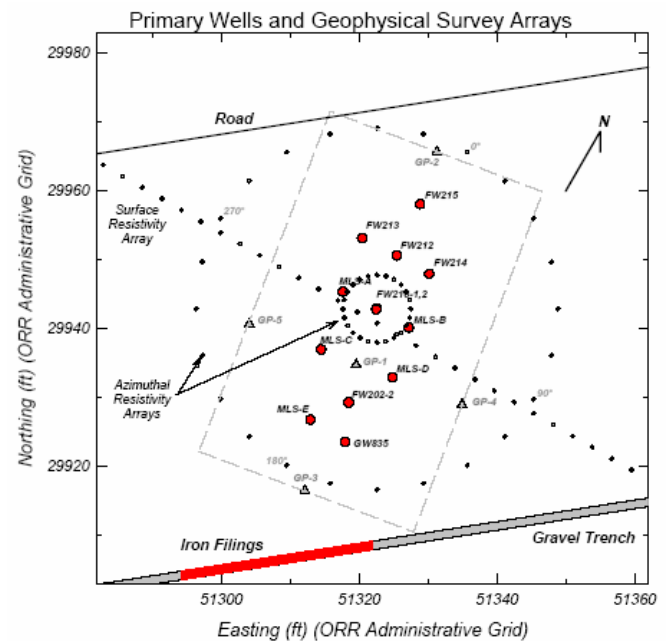
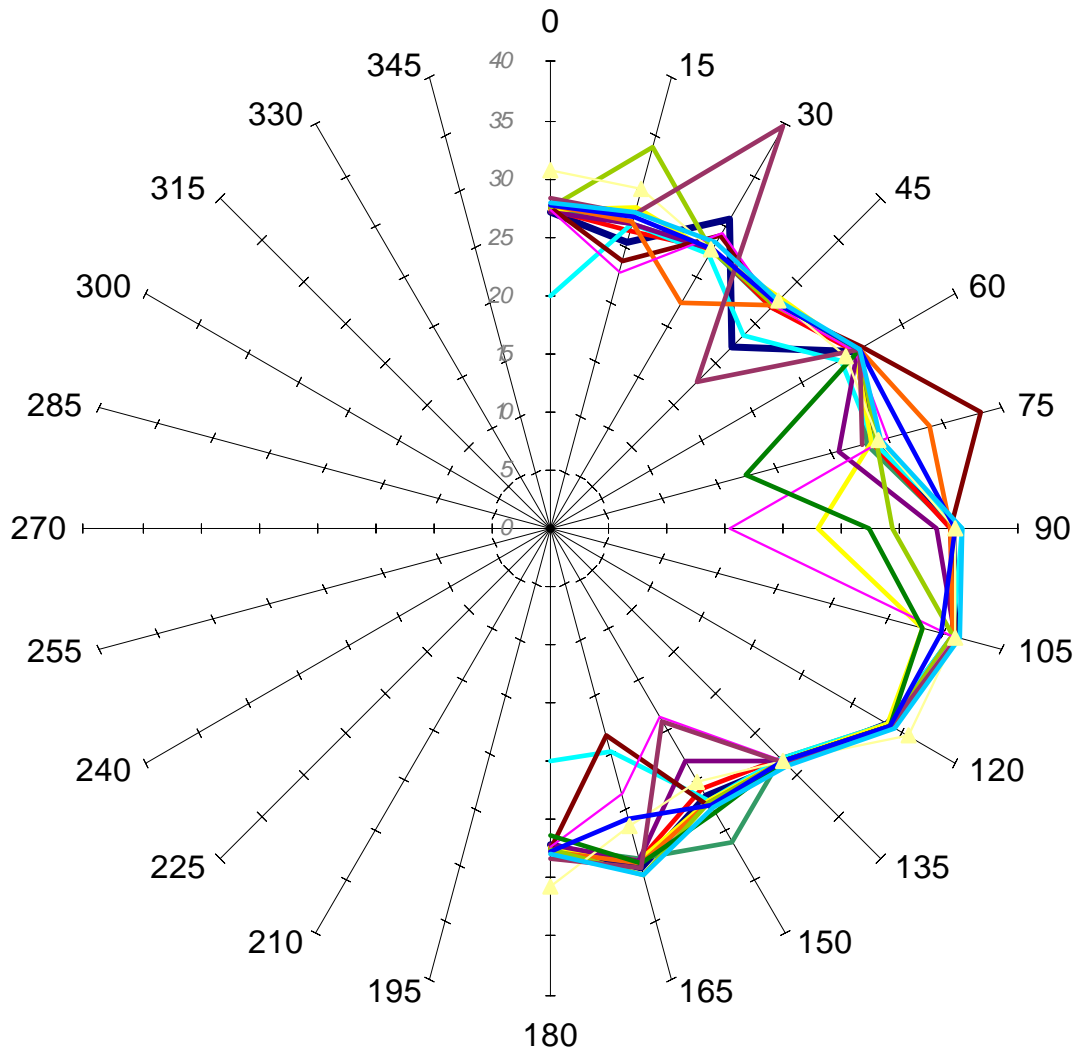


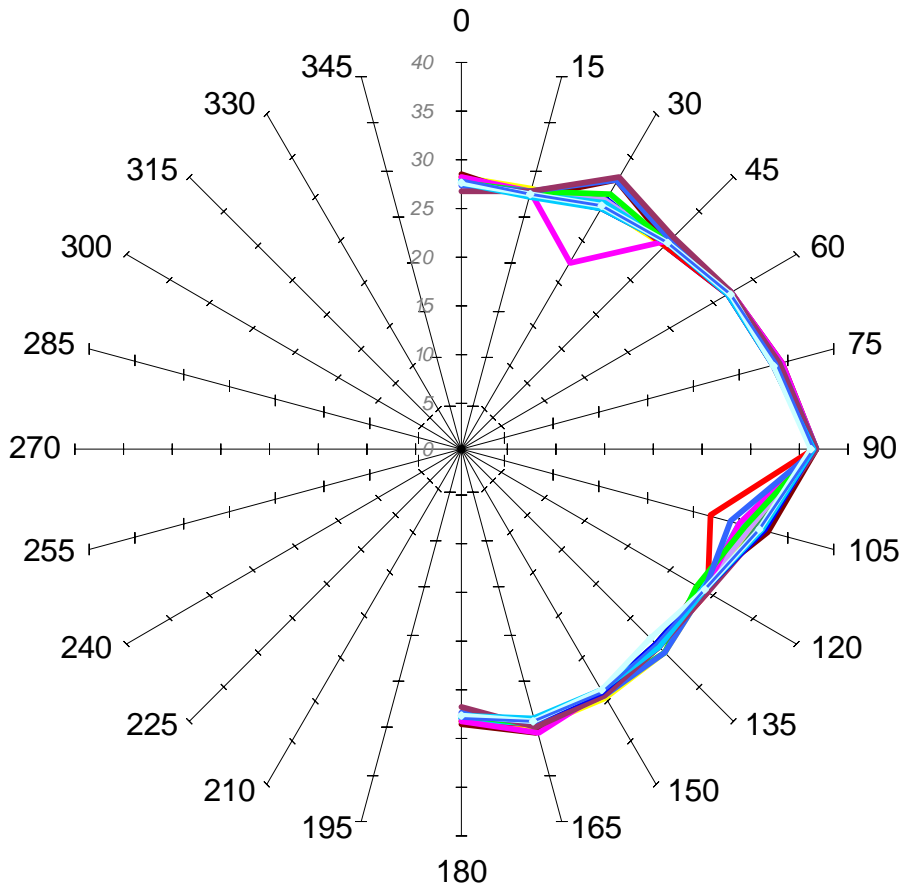
Azimuthal Resistivity



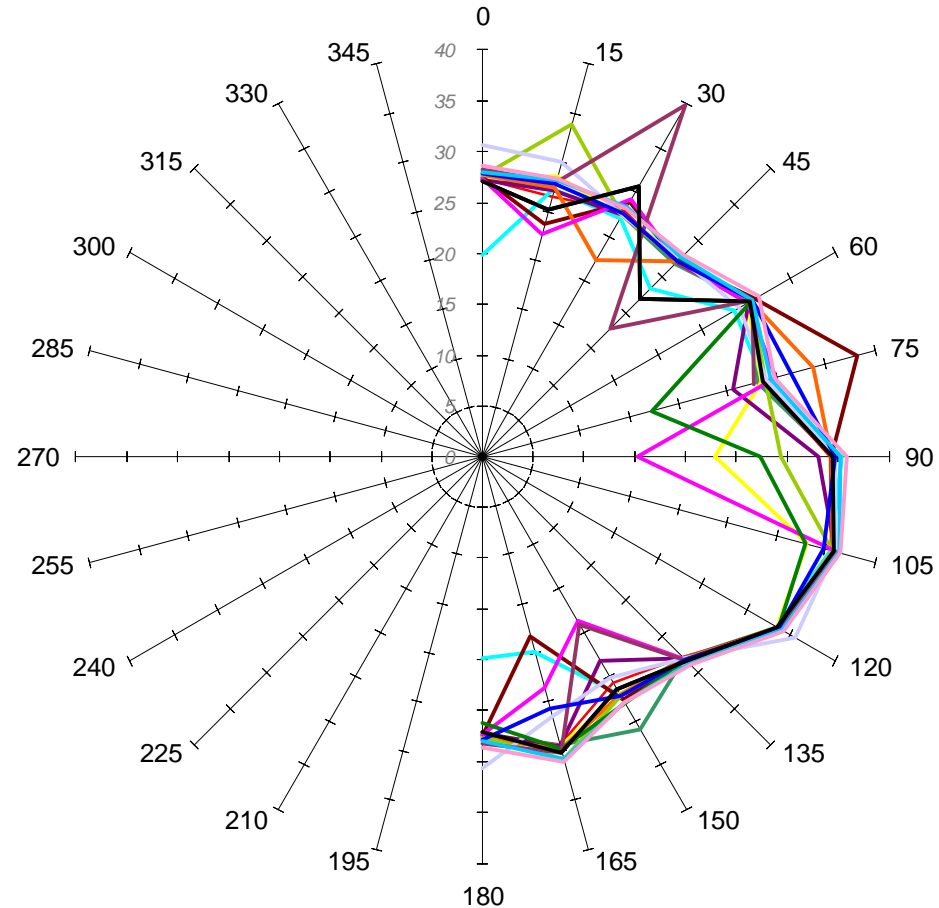
Bromide (~400 ppm) and ethanol (~10 mmolar) were injected at a combined rate of 9 L/min (3 L/min in each of three wells) for 24 hours and subsequently for one-hour intervals every 24 hours.

2004 and 2005 azimuthal results

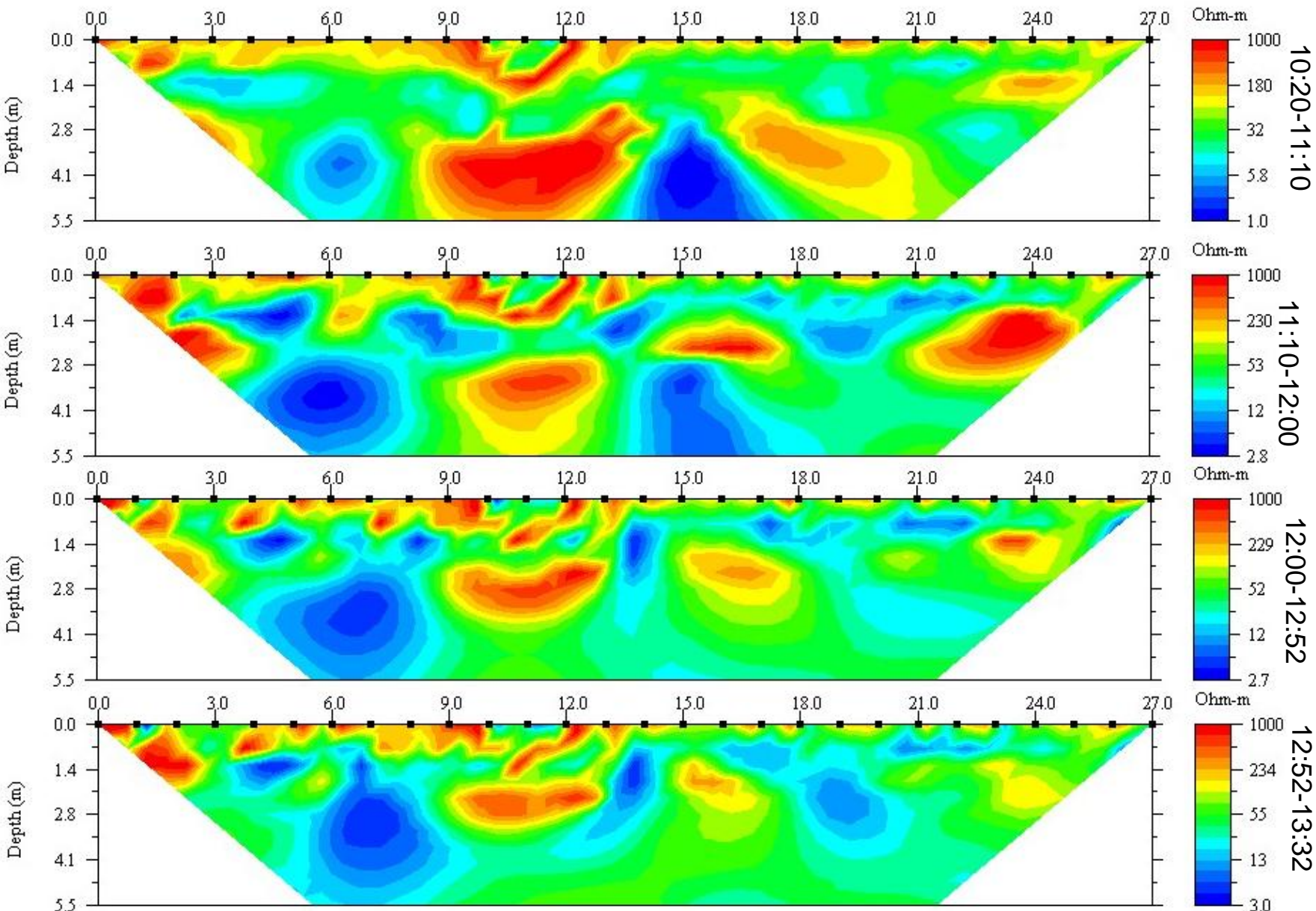
2004



2005



Surface Resistivity (taken Oct 12, 2005)

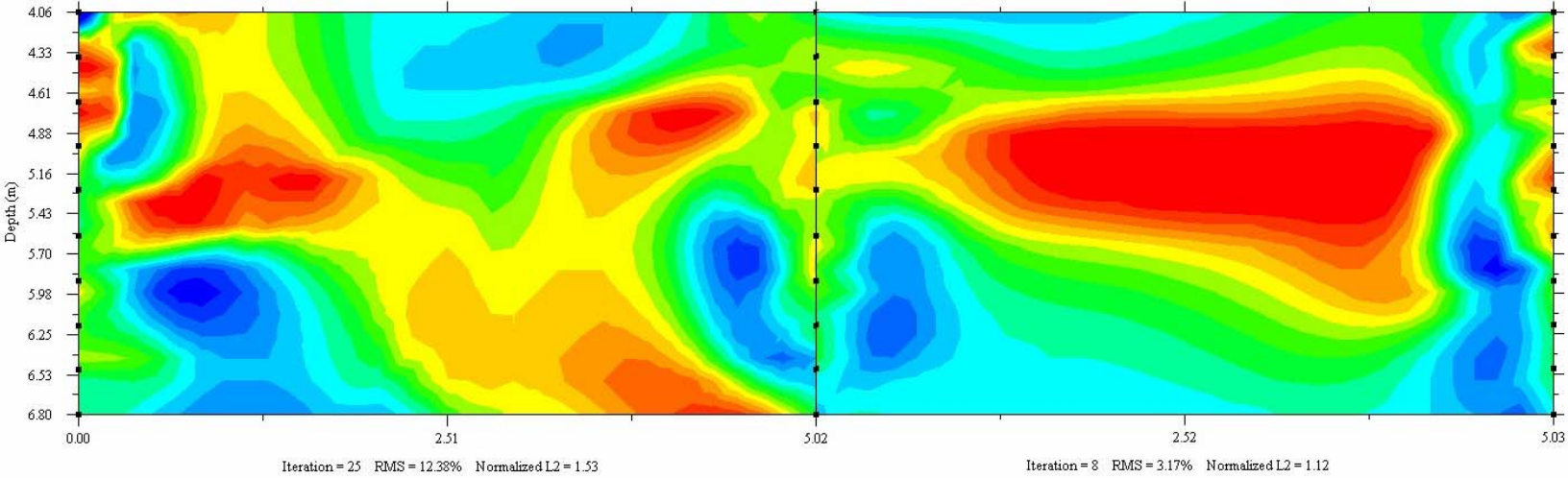


Crosshole Resistivity

Inverted Resistivity Section

Inverted Resistivity Section

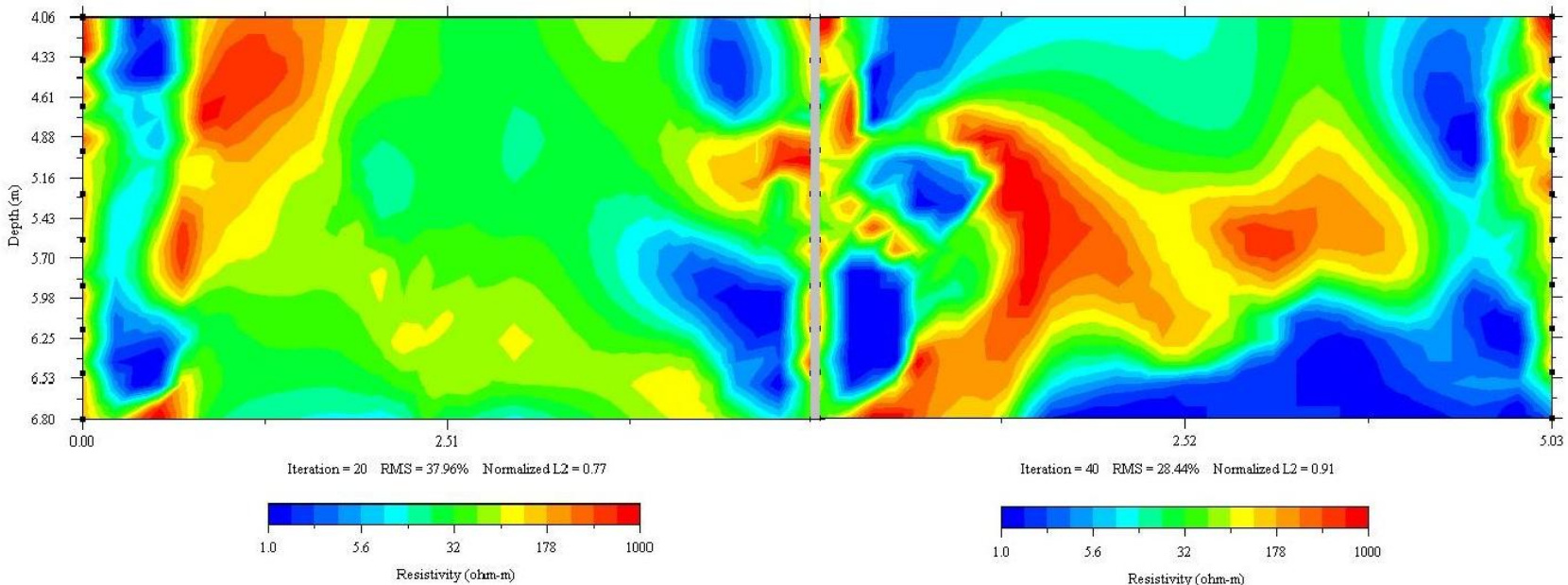
Sept 28, 2005



Inverted Resistivity Section

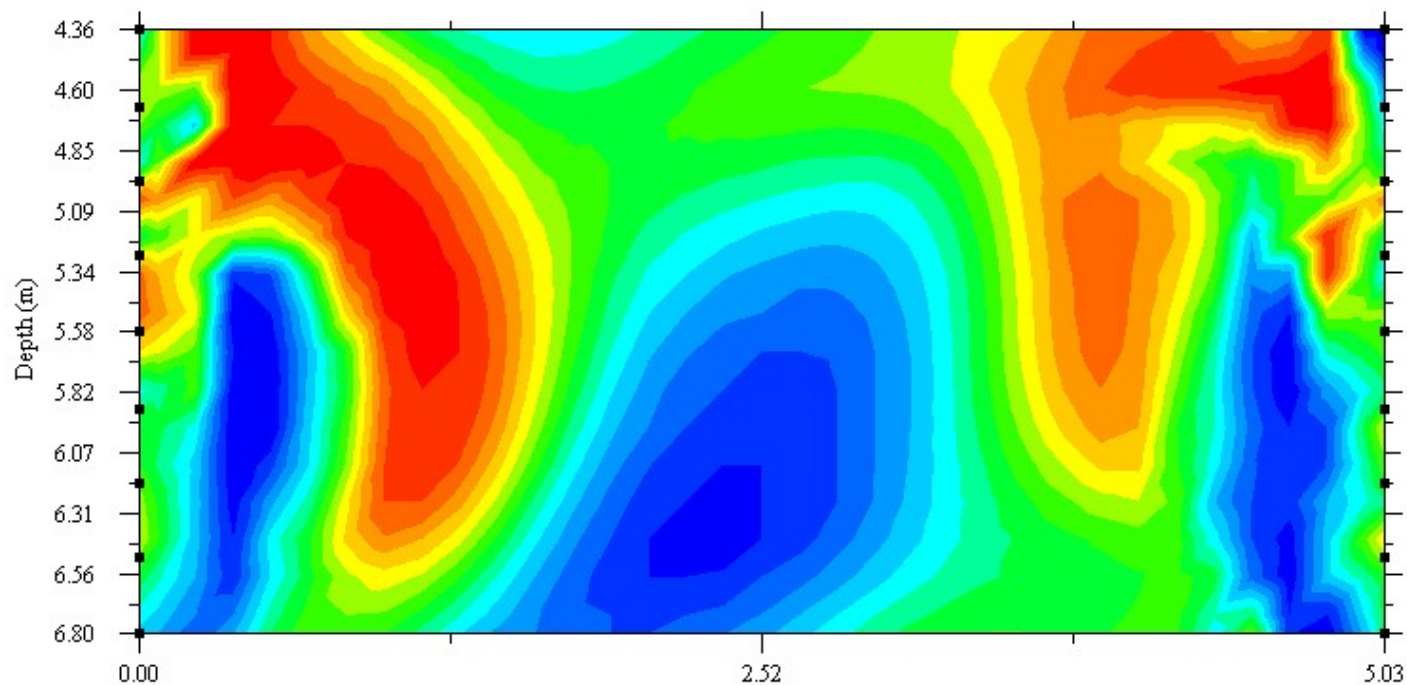
Inverted Resistivity Section

Oct 12, 2005

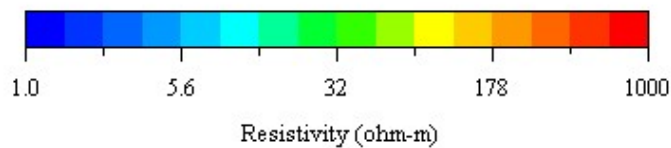


Oct. 20th, 10:15-11:10

Inverted Resistivity Section

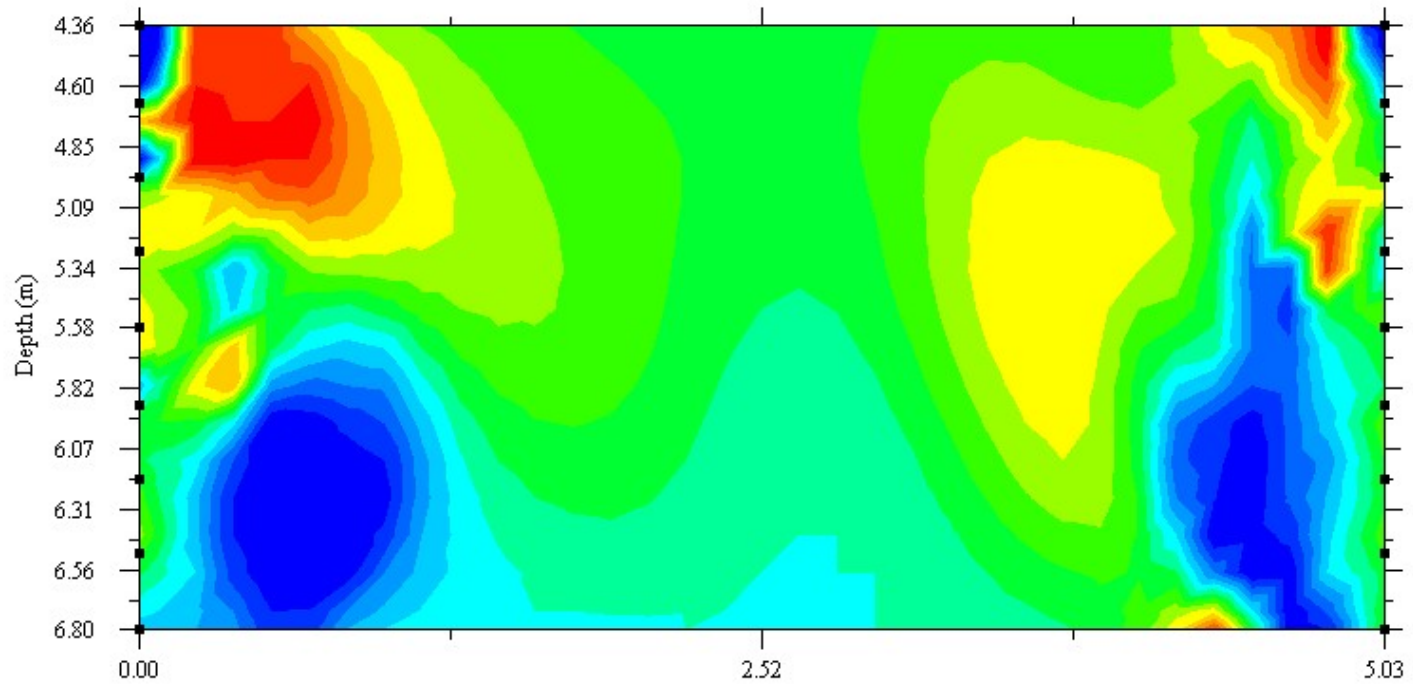


Iteration = 30 RMS = 13.67% Normalized L2 = 1.12

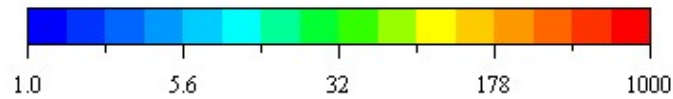


11:20-12:10

Inverted Resistivity Section



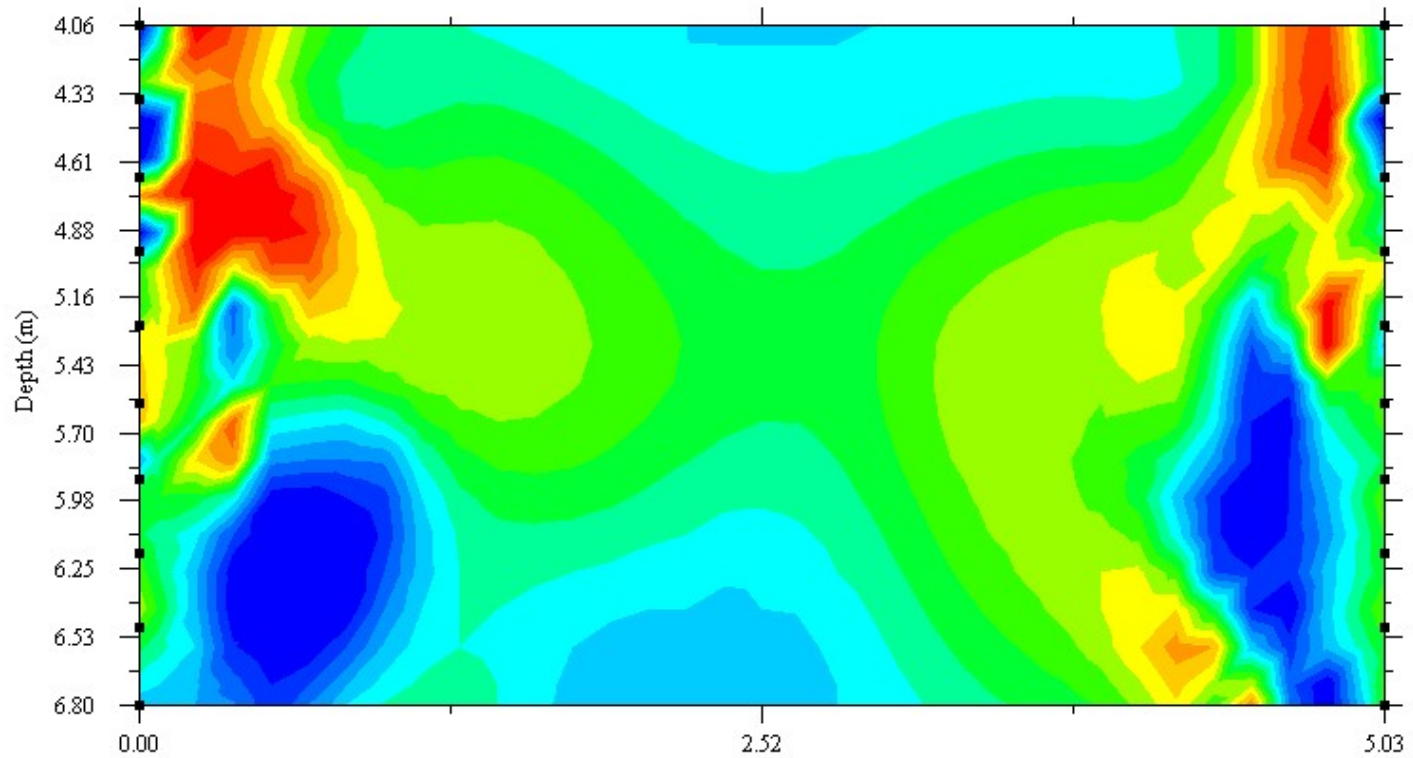
Iteration = 22 RMS = 8.43% Normalized L2 = 0.88



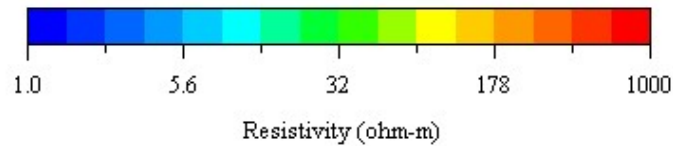
Resistivity (ohm-m)

12:10-13:00

Inverted Resistivity Section

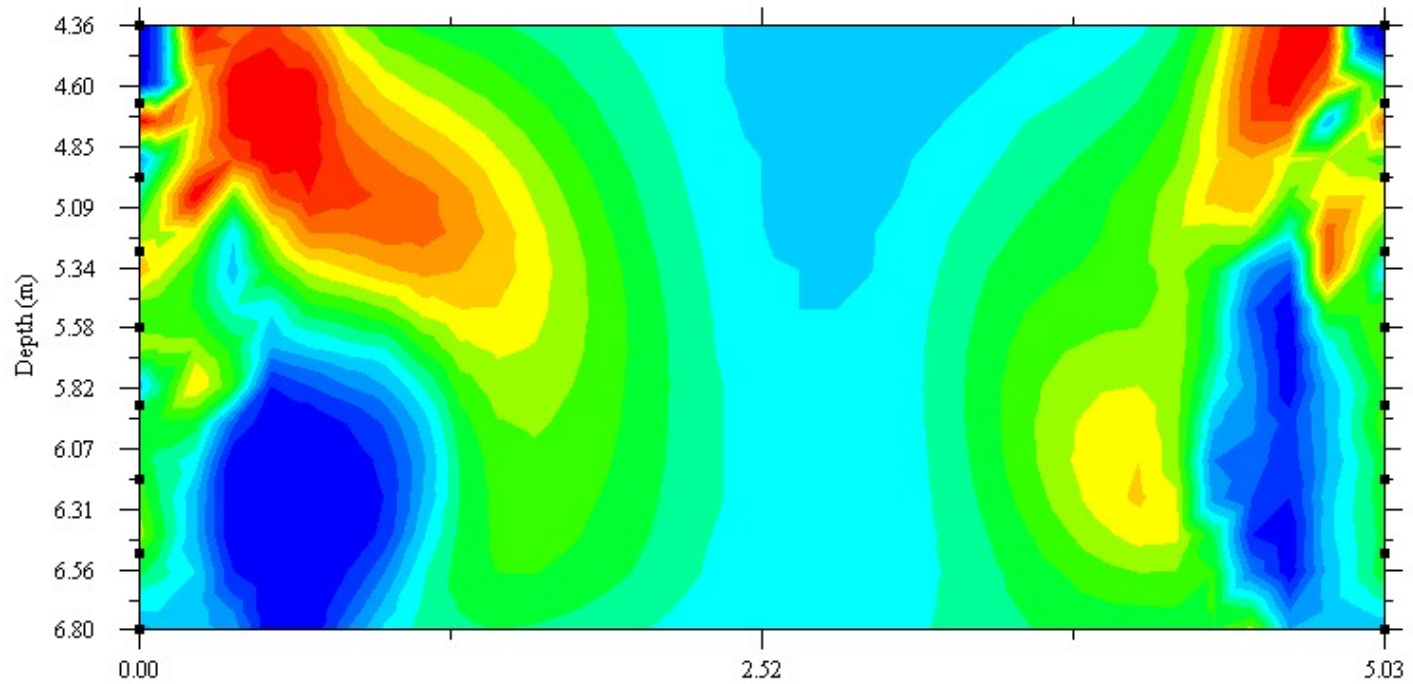


Iteration = 24 RMS = 7.80% Normalized L2 = 0.94

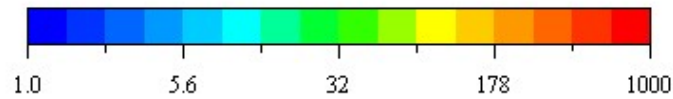


14:40:15:30

Inverted Resistivity Section



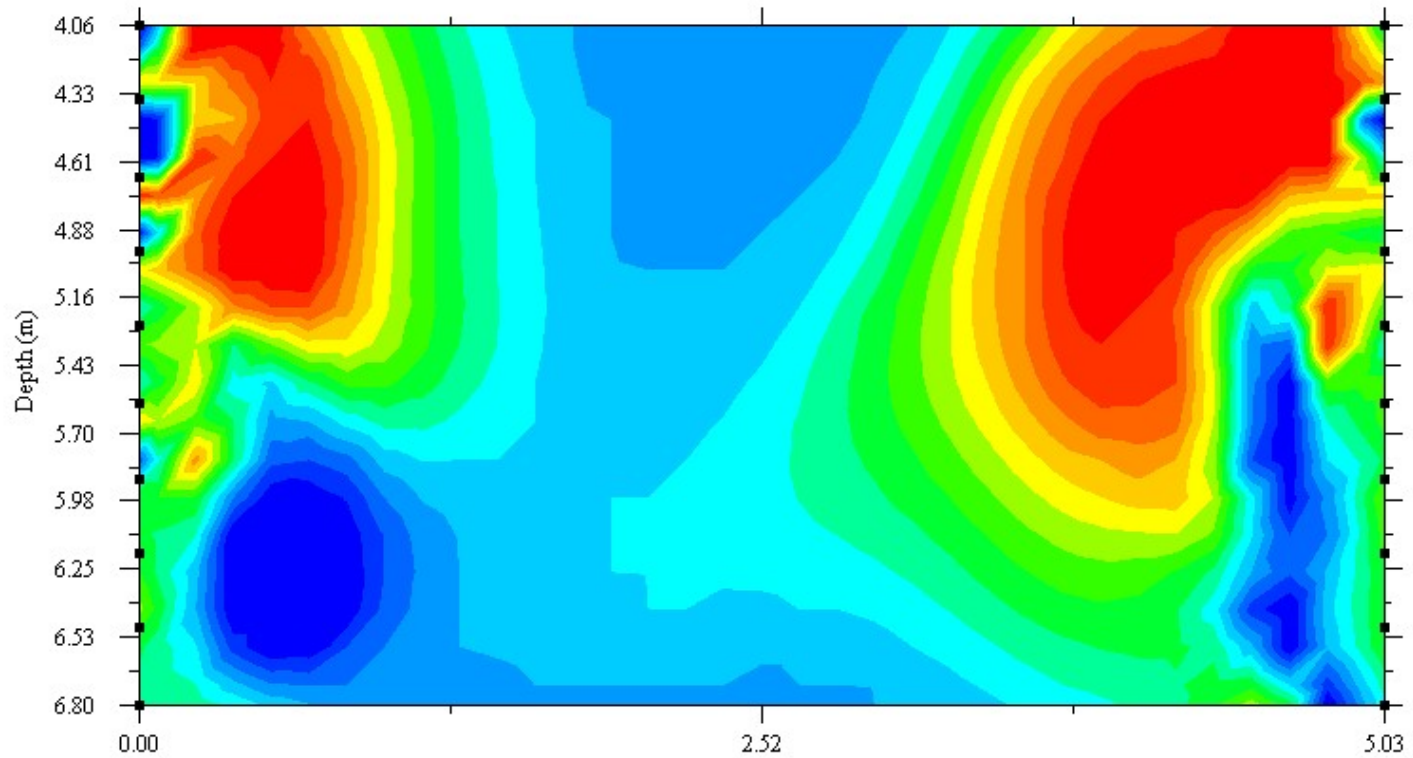
Iteration = 21 RMS = 7.31% Normalized L2 = 0.96



Resistivity (ohm-m)

15:30-16:20

Inverted Resistivity Section



Iteration = 22 RMS = 14.33% Normalized L2 = 0.97

