



Northern Bering Sea Research Area Research Plan Community and Subsistence Workshop

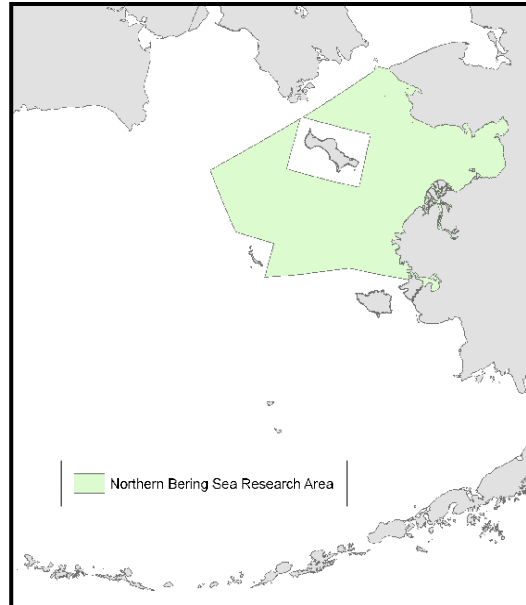
February 24 - 25, 2010

**Anchorage Chamber of Commerce Conference Room
1016 West Sixth Avenue, Suite 304, Anchorage, AK**

The Alaska Fisheries Science Center (AFSC), at the request of the Council, is developing a scientific research plan for the Northern Bering Sea Research Area (NBSRA) to study the effects of bottom trawling on the benthic community. The NBSRA was established by the Council, became effective in 2008, and is currently closed to bottom trawl fishing. The primary goals of the plan would be to use the research area to investigate the effects of bottom trawling on bottom habitat, and provide information to help with developing future protection measures in the NBSRA for crab, marine mammals, endangered species, and the subsistence needs of western Alaska communities.

Purpose of workshop

Communication with local communities is necessary to ensure their interests are represented in enacting policies and managing resources in the NBSRA. The purpose of this meeting is to gather input from subsistence fishing communities for the development of the NBSRA research plan. The purpose is to delineate areas of subsistence harvest or habitat of marine species in the NBSRA, understand the nature of subsistence activities, register concerns about the impact of commercial bottom trawling, and collect ecological knowledge of the NBSRA. The workshop is open to the public.



For more information on the research plan outline and schedule, visit our website:

http://www.fakr.noaa.gov/npfmc/current_issues/ecosystem/NBSRA.htm

Or contact:

Dr. Cynthia Yeung, Alaska Fisheries Science Center, project lead, cynthia.yeung@noaa.gov

Diana Evans, North Pacific Fishery Management Council, diana.evans@noaa.gov

Nicole Kimball, North Pacific Fishery Management Council, nicole.kimball@noaa.gov

Melanie Brown, National Marine Fisheries Service, melanie.brown@noaa.gov

(See a draft agenda for the Community and Subsistence Workshop on the back of this flyer.)

Northern Bering Sea Research Area Research Plan Community and Subsistence Workshop

Anchorage Chamber of Commerce Conference Room, 1016 West Sixth Avenue, Suite 304
(corner of 6th Ave & K Street in downtown Anchorage)

AGENDA

Wednesday, February 24 8:30 am – 4:30 pm

8:30 - 9 AM COFFEE

I. Introduction

II. Overview of NBSRA concept and planning (AFSC)

- Establishment of the NBSRA *Melanie Brown, National Marine Fisheries Service, Alaska Region*
- Research planning *Cynthia Yeung, Alaska Fisheries Science Center*
- Current scientific knowledge
 - Managed species
 - Crabs *Dan Urban, Alaska Fisheries Science Center*
 - Ice-associated seals *Mike Cameron, NOAA National Marine Mammal Laboratory*
 - Walrus *Jonathan Snyder, US Fish and Wildlife Service*
 - Seabirds *Tamara Zeller, US Fish and Wildlife Service*

BREAK

- Bottom trawling
 - Trawl surveys *Bob Lauth, Alaska Fisheries Science Center*
 - Gear modifications *Craig Rose, Alaska Fisheries Science Center*
 - Trawl impact studies *Bob McConnaughey, Alaska Fisheries Science Center*

12 - 1 PM LUNCH

III. Comments and questions on the morning's topics (open)

IV. Subsistence activities and traditional knowledge (communities)

- Overview of communities by representatives
- Open dialogue with community members
 - Descriptions of communities
 - *populations, economy, activities, culture and traditions*
 - Information to aid research and management planning
 - *species distributions / habitats; harvest methods, effort and catch; ecological observations*

Thursday, February 25 9 am – 12 pm

V. Open Discussion on Community Concerns

- Possible topics:
 - Ecology
 - Critical habitats
 - Potential impacts of bottom trawling
 - Management and economic considerations
 - Research priorities
 - Ecosystem monitoring
 - Partnership and cooperation in research and management
 - Communications and outreach
 - Timing for future comment/feedback
 - NBSRA Research Plan schedule