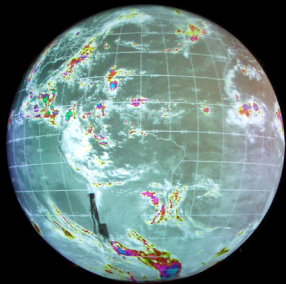


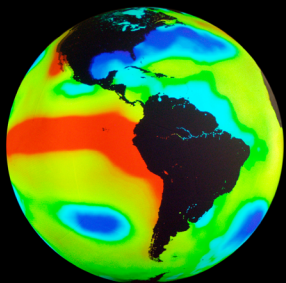
Science On a Sphere®



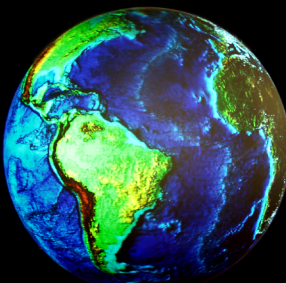
NOAA's *Science On a Sphere*® uses high-speed computers, projectors, and advanced imaging techniques to create the illusion of a planet, the Sun, a moon, or any other celestial body rotating in space. Weather and other geophysical data can also be shown moving across the surface of the Earth and other planets.



Infrared data from 5 geostationary satellites is combined and set into motion over the surface of the Earth. Massive storms are easily seen forming, rotating and moving over land and oceans.



20 years of sea surface temperature anomalies are shown forming constantly varying patterns on the world's oceans. Dramatic "El Niño" events stand out in 1982 and 1997.



Topography and bathymetry of the Earth's surface are rendered in 3-dimensional colors as the planet rotates from daylight into night, where the lights of the Earth at night come into view.

Visit www.sos.noaa.gov