

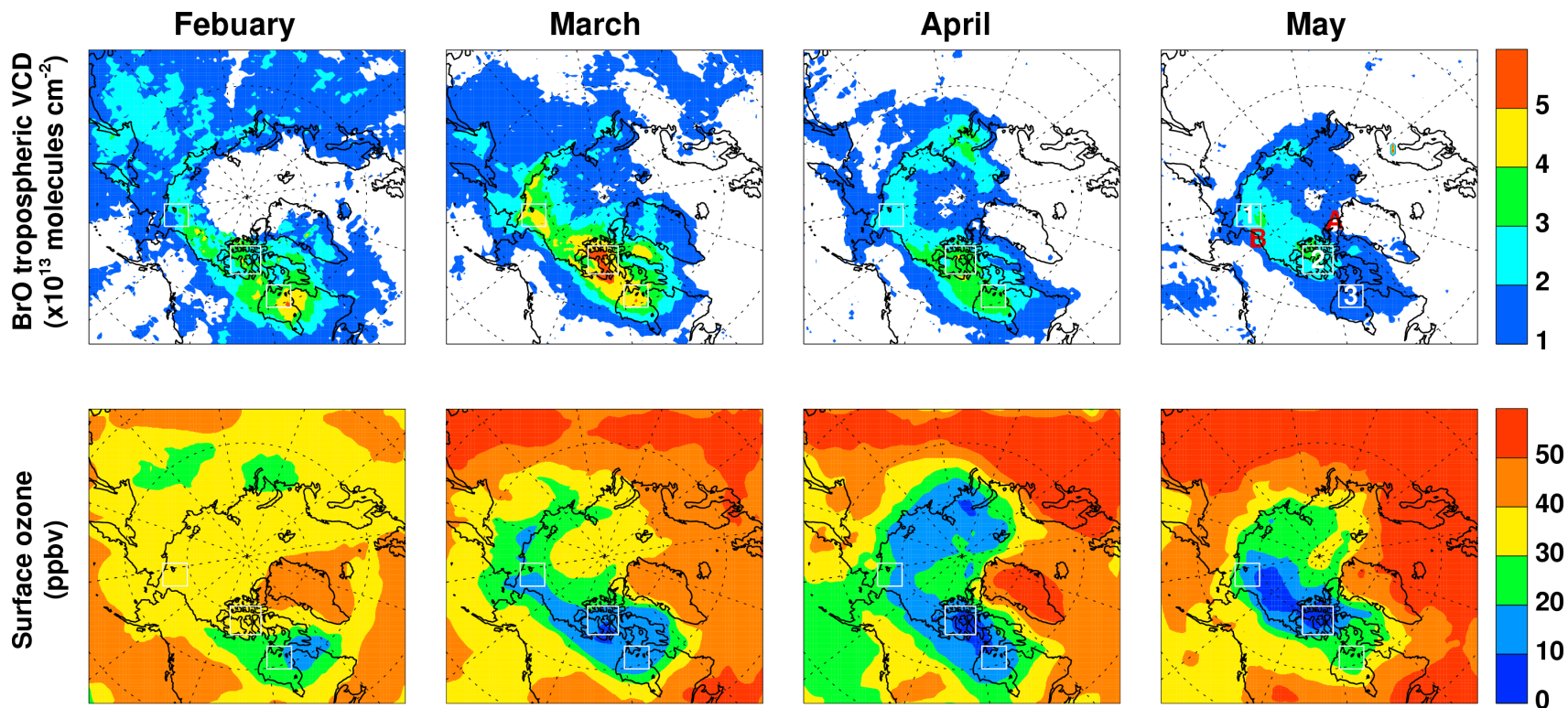
# ODE forecast in support of ARCTAS

Yuhang Wang (Georgia Tech)  
and Kelly Chance (Harvard-  
Smithsonian Center for Astrophysics)

# Forecast setup

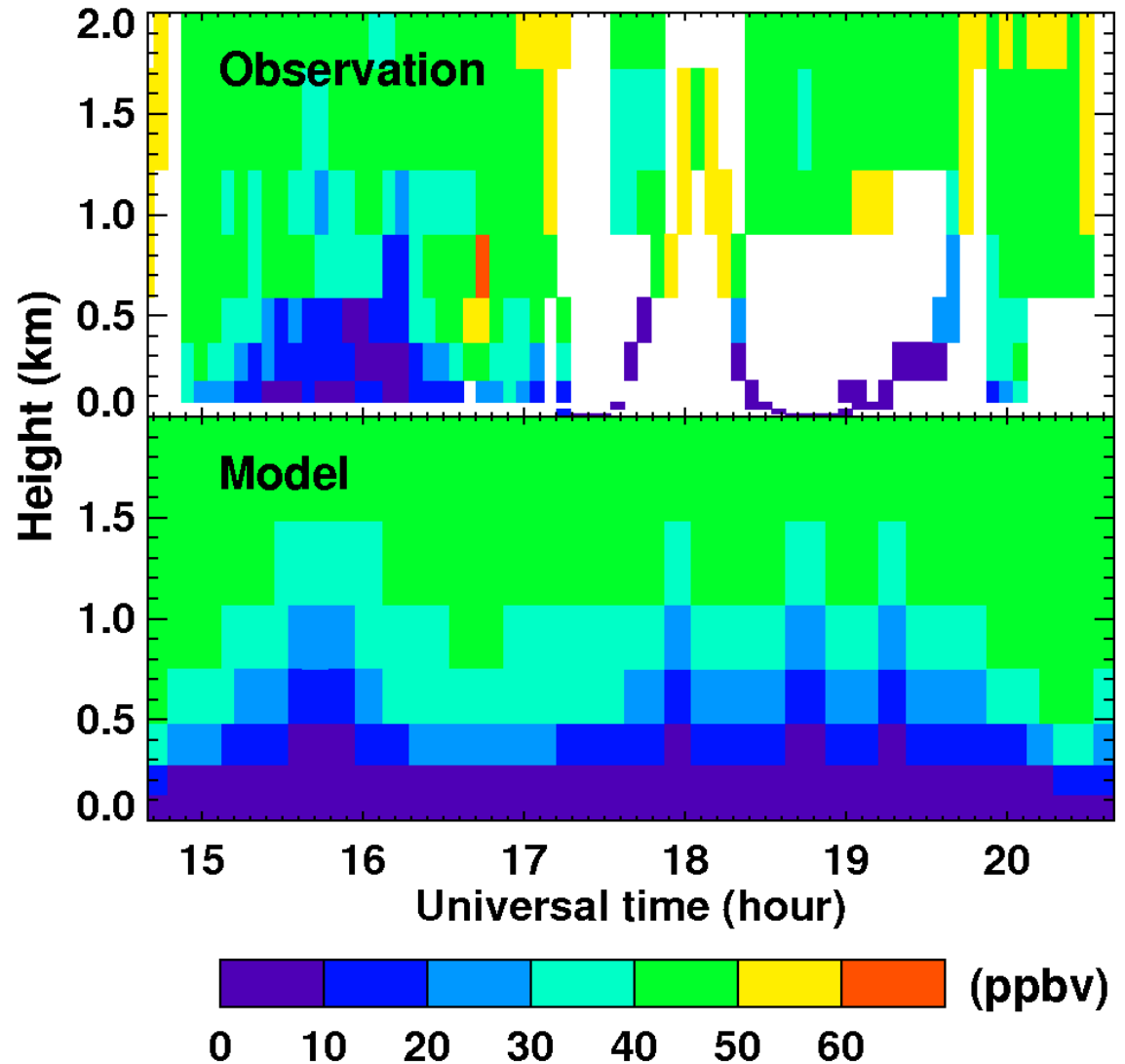
- Polar-MM5 meteorological forecast
- Composite OMI BrO (and possibly GOME-2) in the previous 3-days
- REAM regional CTM chemical forecasts
  - $O_3$  for BrO-driven ODEs
  - Pseudo- $BrO_x$  tracer
- Forecast products will be available at <http://apollo.eas.gatech.edu/forecast.html>

# GOME tropospheric BrO columns and simulated surface O<sub>3</sub> for TOPSE



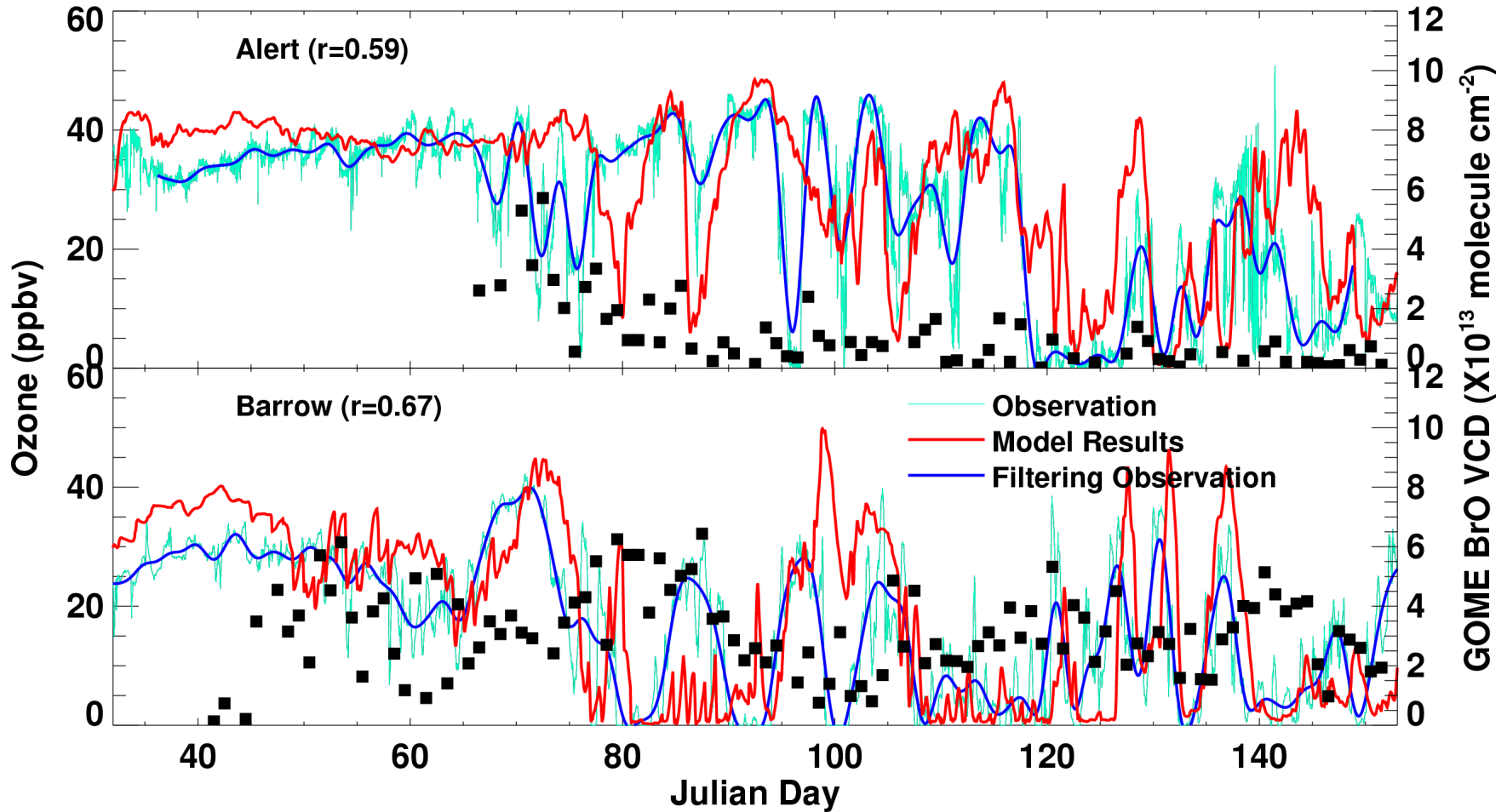
(Zeng et al., 2005)

Comparison between DIAL and in situ  $O_3$  measurements with model simulation for Flight 19 of TOPSE.



(Zeng et al., 2003)

# Comparison of surface O<sub>3</sub> measurements at Alert and Barrow with model simulation for TOPSE



(Zeng et al., 2003)