

Stellwagen Bank National Marine Sanctuary

# WhaleALERT





# Why Whale**ALERT**

- North Atlantic right whales are highly endangered (pop. ~ 400 – 500);
- Ship strikes are a leading cause of right whale mortality;
- Numerous management measures apply to mariners;
  - Compliance is best if information is streamlined;
  - Mariners have been fined up to \$92K for non-compliance



# What Ships Need to Know

## Rules & Regulations

- Right Whale Seasonal Management Areas (SMA)
- Right Whale Mandatory Ship Reporting (MSR)

## Voluntary Measures

- Right Whale Dynamic Management Areas (DMA)
- Right Whale Real-Time Acoustic Buoys
- Right Whale Areas to be Avoided (ATBA)
- Right Whale Recommended Routes



# How They Get All That Information

## Seasonal Management Areas (SMA)

- *Notice to Mariners* - *Electronic Charts ECDIS*
- *Website* - *NOAA Placard*

## Mandatory Ship Reporting (MSR)

- *Website* - *NOAA Placard*
- *MSR Telex/Phone/Email reporting required*

## Dynamic Management Areas (DMA)

- *Notice to Mariners* - *Website*
- *MSR Telex/Phone/Email response from reporting*



# How They Get All That Information

## Real-Time Acoustic Buoys

- Website

- Cornell phone Calls to LNG

## Areas to be Avoided (ATBA)

- Website

- Notice to Mariners

- MSR Telex/Phone/Email reporting required

## Recommended Routes

- Website

- Electronic Charts ECDIS

**Requires visiting multiple websites & sources, often confusing and unsure if it is most up to date information**



# Whale**ALERT** Provides

- Easy and Efficient Access to All of the most Up-to-Date Rules, Regulations & Voluntary Information
- Centralized location for all Right Whale Information displayed over Raster Nautical Charts





# WhaleALERT

v1.0

Free App for



iPad  
or



iPhone



# Whale**ALERT** Provides

- Current Ships Location (built in GPS)
- Most up to date Raster Nautical Charts
- Real-Time Acoustic Detection Buoys
- Real-Time Seasonal Management Areas
- Real-Time Dynamic Management Areas
- Real-Time Areas to be Avoided
  - Mandatory Ship Reporting Areas
  - Right Whale Sightings\*









iPad 2:03 PM 99%

Back **Whale Alert**

**Right Whale Collision Warning System**  
 Vessels servicing liquid natural gas Deepwater Ports  
**Must Slow to 10 knots or less and Increase Vigilance**  
 when within yellow active alert areas.

These actions are voluntary but encouraged for all other vessels. Whale Alerts are designed to complement rather than replace existing protection methods, such as vessel speed restrictions.

[Click here for Rules & Info](#)

**Right Whale Seasonal Management Areas**

All Vessels greater than or equal to 65 ft (19.8 m) in overall length  
**Must Slow to Speeds of 10 knots or less**  
 Within Seasonal Management Areas  
 Ship Strike Reduction Rule (50 CFR 224.105)

[Click here for Regulations](#)

**Right Whale Mandatory Ship Reporting**

Commercial Ships of 300 gross tons and greater  
**Must Report In**  
 when entering designated right whale reporting areas.

Regulated under NOAA (33 CFR Part 169)

[Click here for Regulations](#)

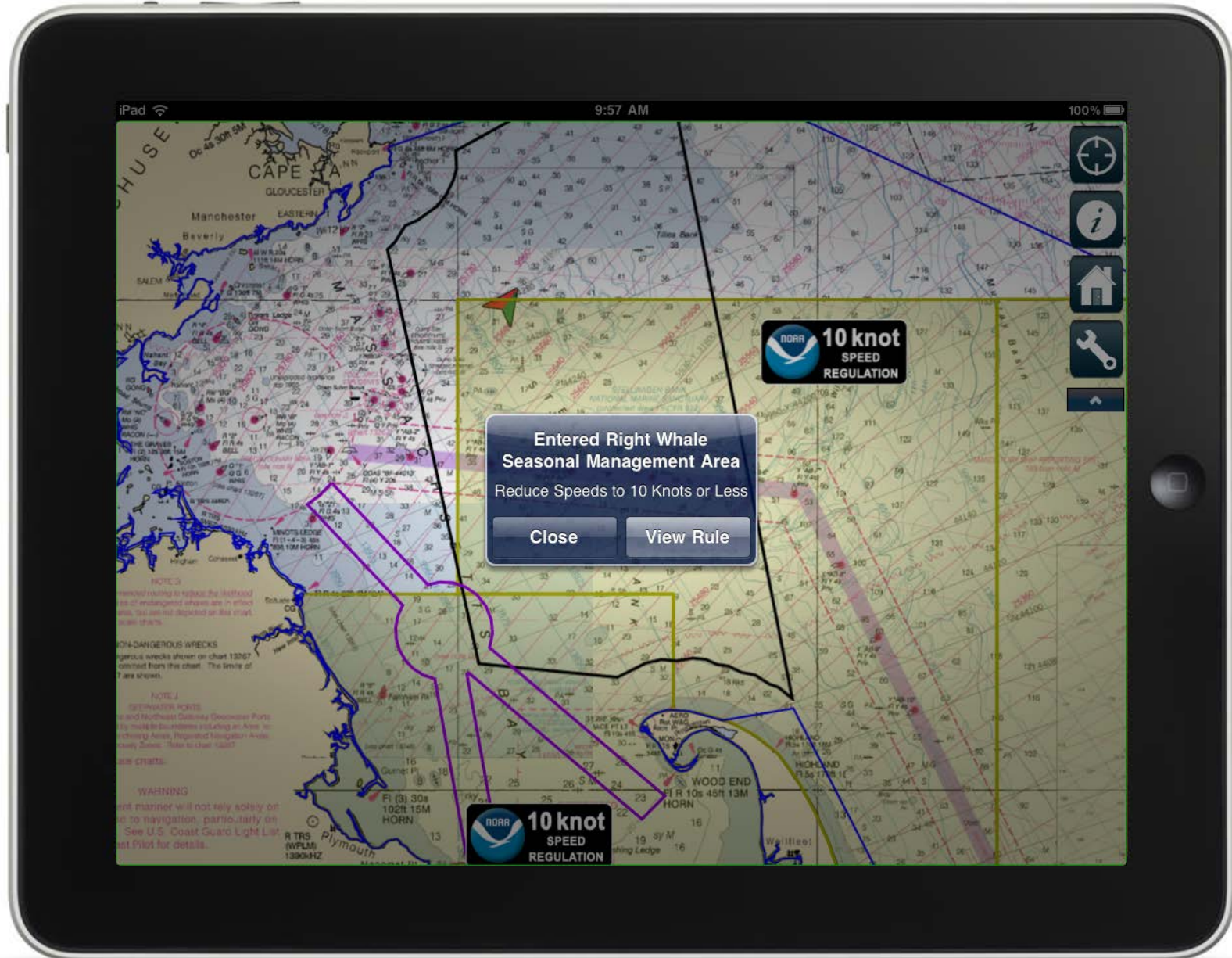
**Area To Be Avoided**

Commercial Ships of 300 gross tons and greater are recommended to  
**Avoid the Area**

These actions are voluntary but encouraged for all vessels.

[Click here for Information](#)





Entered Right Whale  
Seasonal Management Area  
Reduce Speeds to 10 Knots or Less

Close View Rule

**NOAA**  
**10 knot**  
**SPEED**  
**REGULATION**

**NOAA**  
**10 knot**  
**SPEED**  
**REGULATION**



### Right Whale Seasonal Management Areas



**NOAA FISHERIES SERVICE**

Mandatory speed restrictions of 10 knots or less are required in Seasonal Management Areas along the U.S. East Coast during times when right whales are likely to be present. The purpose of this regulation is to reduce the likelihood of deaths and serious injuries to these endangered whales that result from collisions with ships.

*For more information, visit:*  
<http://www.nmfs.noaa.gov/rightwhalestrike>  
<http://nemo.noaa.gov/rightwhalestrike>  
<http://rightwhalesouth.nmfs.noaa.gov>

#### Compliance Guide for Right Whale Ship Strike Reduction Rule (50 CFR 224.105)

**ATTENTION:** All vessels greater than or equal to 65 ft (19.8 m) in overall length and subject to the jurisdiction of the United States and all vessels greater than or equal to 65 ft in overall length entering or departing a port or place subject to the jurisdiction of the United States.

**YOU MUST SLOW TO SPEEDS OF 10 KNOTS OR LESS IN SEASONAL MANAGEMENT AREAS**

Vessels may operate at a speed greater than 10 knots only if necessary to maintain a safe maneuvering speed in an area where conditions severely restrict vessel maneuverability as determined by the pilot or master.

If a deviation from the 10 knot speed restriction is necessary, the following information must be entered into the logbook:

- Reasons for deviation
- Speed at which vessel is operated
- Latitude and longitude at time of deviation
- Time and duration of deviation
- Master of the vessel shall sign and date the logbook entry

Northeast U.S. SMA's

Mid-Atlantic U.S. SMA's

Southeast U.S. SMA's

Voluntary Dynamic DMA's

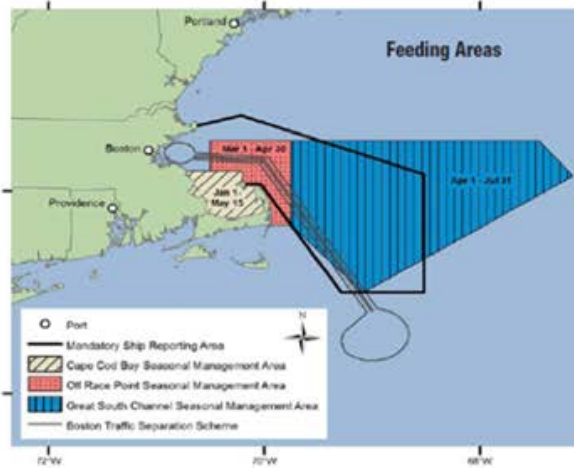


HOME




### Right Whale Seasonal Management Areas

#### Northeast U.S. Seasonal Management Areas



**Cape Cod Bay**  
January 1 – May 15

**Off Race Point**  
March 1 – April 30

**Great South Channel**  
April 1 – July 31

Coordinates

About SMA's

Mid-Atlantic U.S. SMA's

Southeast U.S. SMA's

Voluntary Dynamic DMA's

HOME





iPad

2:17 PM

95%

Back

## Whale Alert

### Right Whale Seasonal Management Areas

Cape Cod Bay

January 1 - May 15

Includes all waters of Cape Cod Bay with Northern Boundary of 42°04'56.5"N, 070°12'W to 42°12'N, 070°12'W then due west back to shore.

Off Race Point

March 1 - April 30

Waters Bounded by:  
 42°04'56.5"N 070°12'W  
 42°12'N, 070°12'W  
 42°12'N, 070°30'W  
 42°30'N, 070°30'W  
 42°30'N, 069°45'W  
 41°40'N, 069°45'W  
 then due west back to shore.

Great South Channel

April 1 - July 31

Waters Bounded by:  
 42°30'N, 069°45'W  
 42°30'N, 067°27'W  
 42°09'N, 067°08'24"W  
 41°00'N, 069°05'W  
 41°40'N, 069°45'W  
 then back to starting pt.

The rule does not apply to waters inshore of COLREGS lines.

Map

- About SMA's
- Mid-Atlantic U.S. SMA's
- Southeast U.S. SMA's
- Voluntary Dynamic DMA's

HOME

massport  
excelerate

# WhaleALERT

Right Collision Warning System



Right Whale Seasonal Management Areas



Dynamic Management Areas

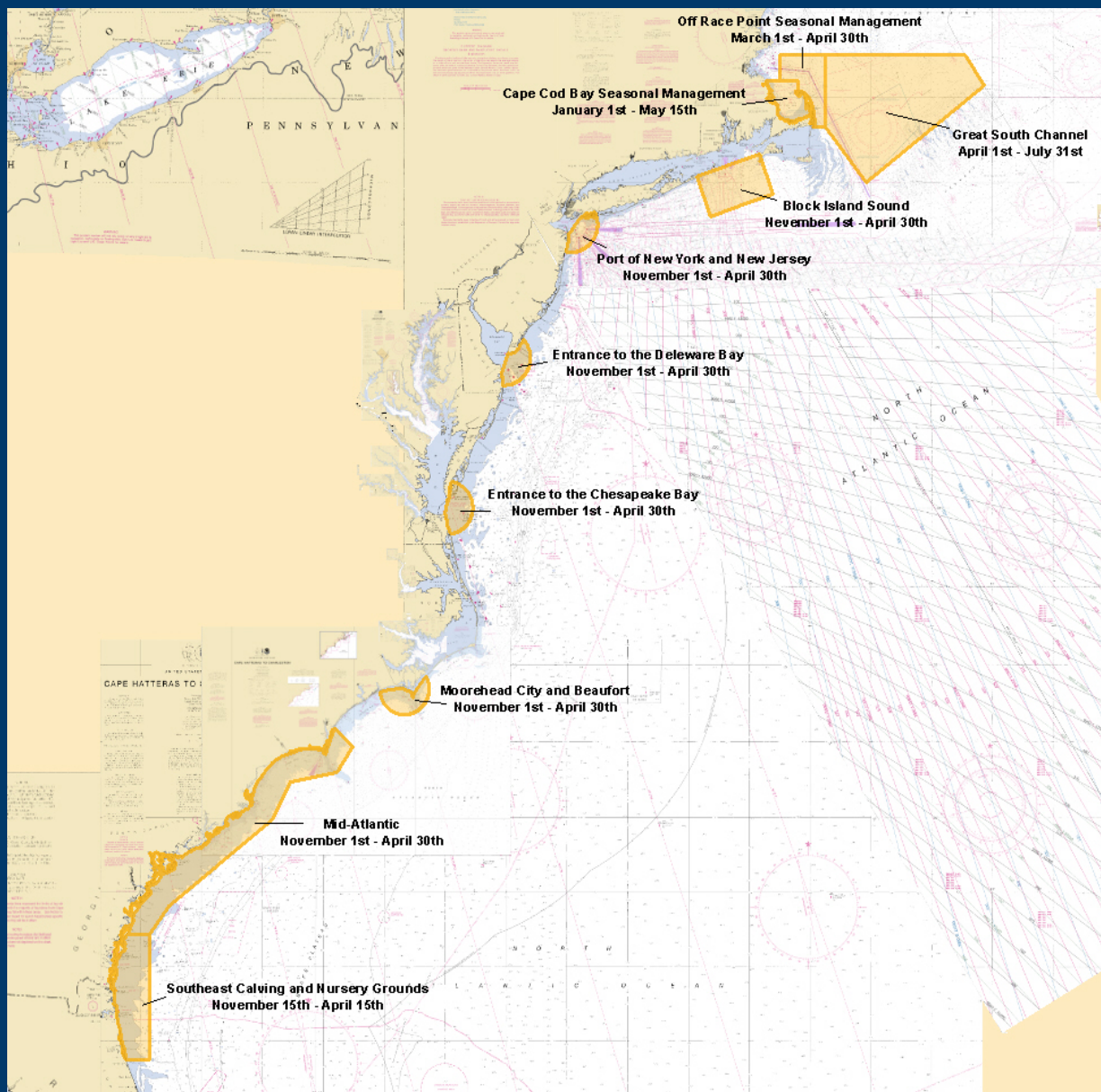


Right Whale Mandatory Ship Reporting



Area To Be Avoided





# SMAs along Eastern Seaboard



# Whale**ALERT** v1.0

Download it Now at  
The App Store

FREE



Available on the  
App Store

iPad



iPhone



# WhaleALERT v1.0

<http://stellwagen.noaa.gov/protect/whalealert.html>

GERRY E. STUDDS  
**STELLWAGEN BANK**  
NATIONAL MARINE SANCTUARY

- Home
- About the Sanctuary
- Visitor Information
- Education
- Science
- Management
- Maritime Heritage
- Resource Protection
  - Guidelines & Regulations
  - Protecting Whales from Tuna Gear
  - Enforcement
  - Incident Response
  - Contingency Plans
  - Reporting
- News & Events
- Galleries
- Library
- Get Involved

RESOURCE PROTECTION

## WhaleALERT

Aiding Mariners and Protecting Right Whales

**About the App**

*WhaleALERT is an app designed to augment existing ship navigation tools informing mariners of the safest and most current information to reduce the risk of ship and right whale collisions.*

# WhaleALERT v1.0

## Easy to Read/Print User Manual

<http://stellwagen.noaa.gov/protect/whalealert.html>

### Quick Start Manual

### Detailed Setup & FAQ

WhaleALERT is an app designed to augment existing ship navigation tools informing mariners of the safest and most current information to reduce the risk of ship & right whale collisions. Seasonal Management Areas, Recommended Routes, and Areas to be Avoided are displayed. When connected to AIS, vessels transiting the Boston TSS are able to receive near-real time warnings when right whales are detected within the TSS.

## WhaleALERT

### Quick Setup Instructions

- 1.) Plug the Digi AIS to Wi-Fi adapter into the vessel's Pilot plug.
- 2.) Insert the power adapter to the WiFi router.
- 3.) Insert the white power adapter to the iPad.
- 4.) Power on the iPad on by pushing the power button.
- 5.) Slide your finger from left to right on the "slide to unlock" switch.
- 6.) Press the WhaleAlert icon to start the app.
- 7.) Place iPad in magnetic mount and place in an area where it can be easily observed by the bridge crew.



massport  
exCelerate

**Buttons:** On the top left corner of the screen there are four buttons (if not, press the down arrow and the buttons will appear).

- Center your vessel on the screen:** Press the topmost button to center your vessel. This will lock your vessel to the center of the map. The map will follow your vessel. Press the button again to stop following your vessel. Note: You can also stop following the vessel by panning the map.
- View the rules, regulations, and information.** Press back in the top left corner of the screen to return to the map.
- Return the map to Boston:** This button will return the map to the default view: Massachusetts Bay, near Boston. This is where the right whale buoy AIS data are available.
- View the Settings:** Here you can adjust certain settings. You can enable/disable sounds, switch between AIS and Wireless Internet when available (leave it on AIS while at sea), and change the contrast colors for night navigation.

massport  
exCelerate



# WhaleALERT v1.0

## Videos

<http://stellwagen.noaa.gov/protect/whalealert.html>

### Tutorial Video



### At Sea Demo Video



# Whale**ALERT** v1.0

## Typical AIS Carrying Vessel Installation

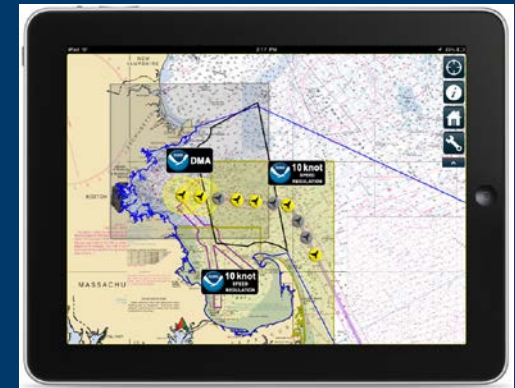
Pilot Port



WiFi Pilot Plug



iPad





# Whale**ALERT** v1.0

Features Not Available without  
Internet or WiFi Pilot Plug

- Real-Time Auto-Detection Buoys
- Real-Time Dynamic Management Areas
  - \* *WiFi AIS requires vessel to be within range of transmitter (~50-100nm from Provincetown, MA)*
  - \* *Internet will display these data using regular data rates*



# Whale**ALERT** Collaborating Partners

- National Oceanic and Atmosphere Administration
- Stellwagen Bank National Marine Sanctuary
- Northeast Fisheries Science Center
- International Fund for Animal Welfare
- EarthNC
- Bioacoustic Research Program at the Cornell Lab of Ornithology
- Center for Coastal and Oceanic Mapping / University of New Hampshire
- Gaia GPS
- Massachusetts Port Authority
- NYK Lines North America
- Woods Hole Oceanographic Institution
- Excelerate Energy
- EOM Offshore



# Whale**ALERT** v1.0

Download it Now at  
The App Store

FREE



Available on the  
App Store

iPad



iPhone



<http://stellwagen.noaa.gov/protect/whalealert.html>