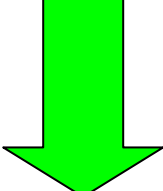
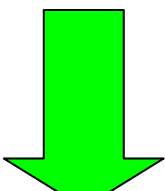
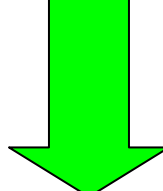
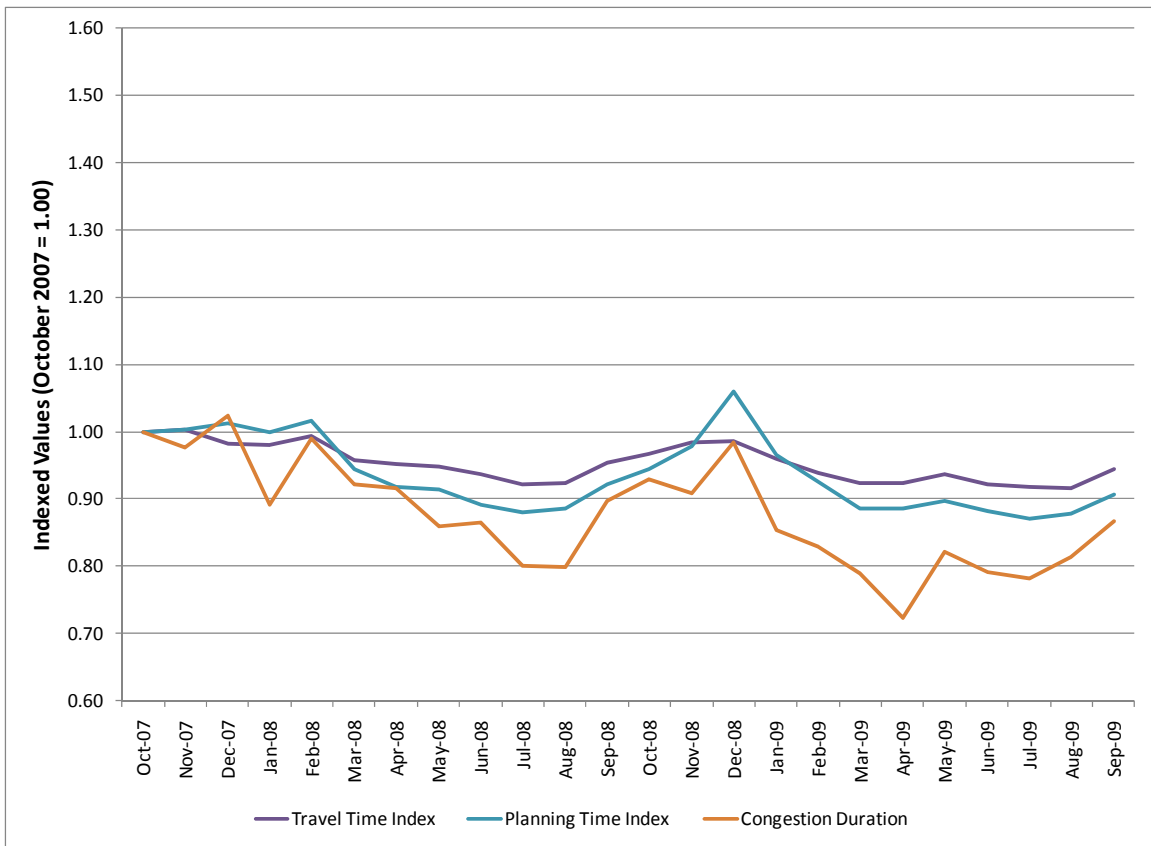


URBAN CONGESTION REPORT (UCR)

NATIONWIDE FOR JULY – SEPTEMBER 2009



Congested Hours <i>Average daily travel under congested conditions</i>	Travel Time Index <i>Peak Period vs. Non-Peak</i>	Planning Time Index <i>Reliability of Travel</i>
 <p style="text-align: center;">-4 mins. (4:16)</p>	 <p style="text-align: center;">-1% (1.17)</p>	 <p style="text-align: center;">-2% (1.41)</p>
<p style="text-align: center;">In 2008: 4:20</p>	<p style="text-align: center;">In 2008 - 1.18</p>	<p style="text-align: center;">In 2008 - 1.43</p>
<p>SUMMARY: For the three-month period ending in September 2009, all three primary measures showed slight improvements over the same three months in 2008. Ten of the 22 cities showed improvements in all three measures. Four cities showed declines in all three measures, and the remaining eight cities were stable or had mixed results.</p>		



UCR Measures for 23 Urban Areas can be found on Page 2 →

URBAN CONGESTION REPORT (UCR)

URBAN AREAS FOR JULY – SEPTEMBER 2009



Urban Area	Congested Hours		Travel Time Index		Planning Time Index		VMT Served - %change	% Usable Data
	2009	Change (2008)	2009	%Change (2008)	2009	%Change (2008)		
Atlanta, GA	5:39	0:21	1.17	0%	1.53	4%	-6%	60%
Boston, MA	4:51	-0:01	1.20	1%	1.51	0%	0%	100%
Chicago, IL	9:31	-0:63	1.30	-4%	1.68	-9%	1%	87%
Detroit, MI	3:15	-1:55	1.06	0%	1.22	2%	-6%	75%
Houston, TX	3:53	-0:38	1.23	-5%	1.53	-18%	n.a.	80%
Minneapolis-St. Paul, MN	3:15	-0:45	1.15	-4%	1.38	-7%	-1%	99%
Oklahoma City, OK	1:44	0:26	1.04	1%	1.14	4%	4%	100%
Orange County, CA	4:09	1:02	1.16	1%	1.38	2%	0%	100%
Los Angeles, CA	5:53	0:53	1.24	2%	1.50	4%	-1%	100%
Philadelphia, PA	4:45	0:52	1.18	4%	1.53	13%	-3%	93%
Phoenix, AZ	2:42	0:21	1.11	0%	1.27	-2%	-1%	98%
Pittsburgh, PA	5:25	-1:56	1.15	-7%	1.36	-11%	8%	98%
Portland, OR	1:36	-0:01	1.21	0%	1.58	8%	1%	33%
Providence, RI	2:19	-0:07	1.07	1%	1.21	-2%	5%	100%
Riverside – San Bernardino, CA	2:39	0:24	1.07	0%	1.21	1%	1%	100%
Sacramento, CA	1:45	-1:11	1.07	-6%	1.19	-15%	1%	100%
St. Louis, MO	2:19	-0:19	1.07	1%	1.21	2%	17%	99%
Salt Lake City, UT	n.a.	n.a.	n.a.	n.a.	n.a.	n.a.	n.a.	n.a.
San Antonio, TX	3:23	-0:52	1.09	1%	1.25	2%	0%	87%
San Diego, CA	1:57	-0:01	1.07	-1%	1.21	-3%	0%	100%
San Francisco, CA	2:44	-0:08	1.11	-1%	1.28	0%	1%	99%
Seattle, WA	5:35	-0:08	1.27	-2%	1.65	-1%	-1%	96%
Tampa, FL	2:18	-1:04	1.07	-2%	1.23	-1%	2%	100%

For more information on the UCR, contact Rich Taylor (Rich.Taylor@dot.gov).