

News

U.S. Department of Labor
Bureau of Labor Statistics
PO Box 193766
San Francisco, CA 94119-3766



CONTACT:

Richard J. Holden (415) 625-2270

Tom Zhu (415) 625-2282

Internet address: <http://www.bls.gov/ro9/news.htm>

BLS 09-63

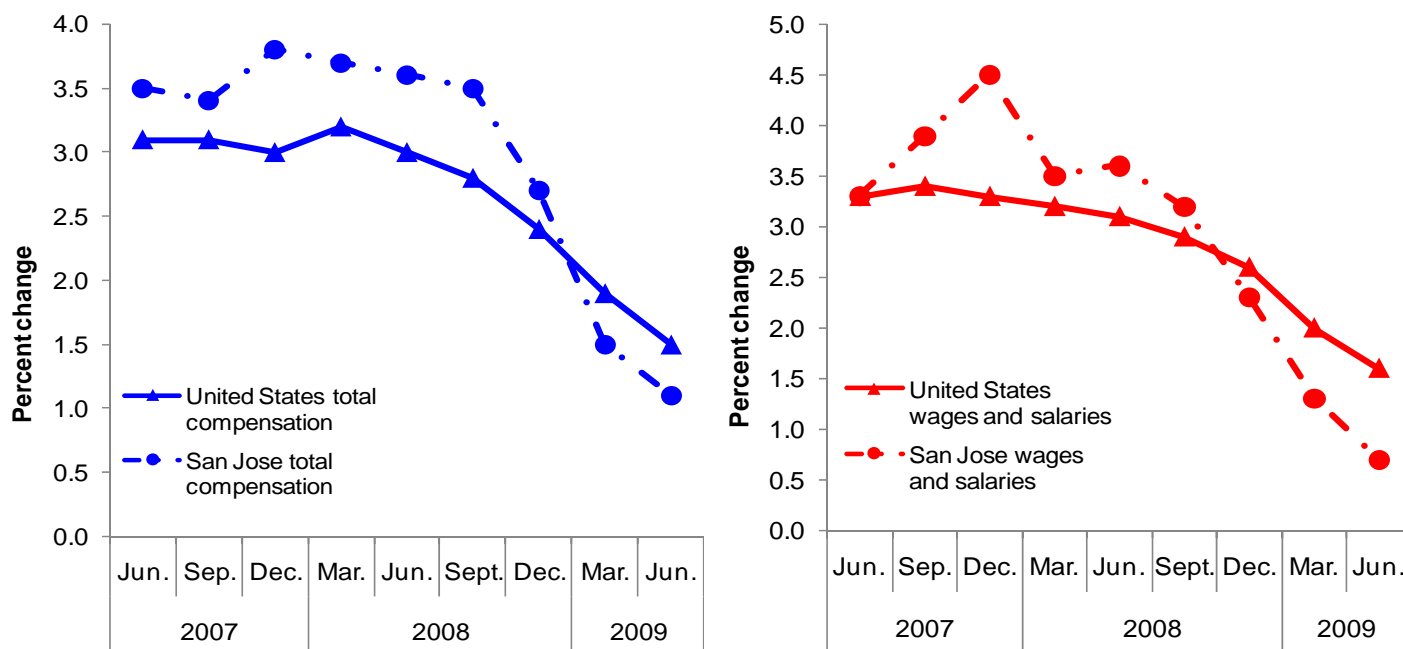
FOR RELEASE:

Wednesday, August 12, 2009

CHANGING COMPENSATION COSTS IN THE SAN JOSE METROPOLITAN AREA: JUNE 2009

Total compensation costs for private industry workers increased 1.1 percent in the San Jose-San Francisco-Oakland, Calif. metropolitan area for the year ended in June 2009, according to the Bureau of Labor Statistics of the U.S. Department of Labor. Richard J. Holden, the Bureau's regional commissioner, noted that one year ago, San Francisco experienced an annual gain of 3.6 percent in total compensation costs. Locally, wages and salaries, the largest component of total compensation costs, advanced at a 0.7 percent pace for the 12-month period ended June 2009. Nationwide, total compensation costs rose 1.5 percent and wages and salaries, 1.6 percent over the same period. (See chart A and table 1.)

Chart A. Twelve-month percent changes in the Employment Cost Index for total compensation and for wages and salaries, private industry workers, United States and the San Jose area, not seasonally adjusted, June 2007 to June 2009



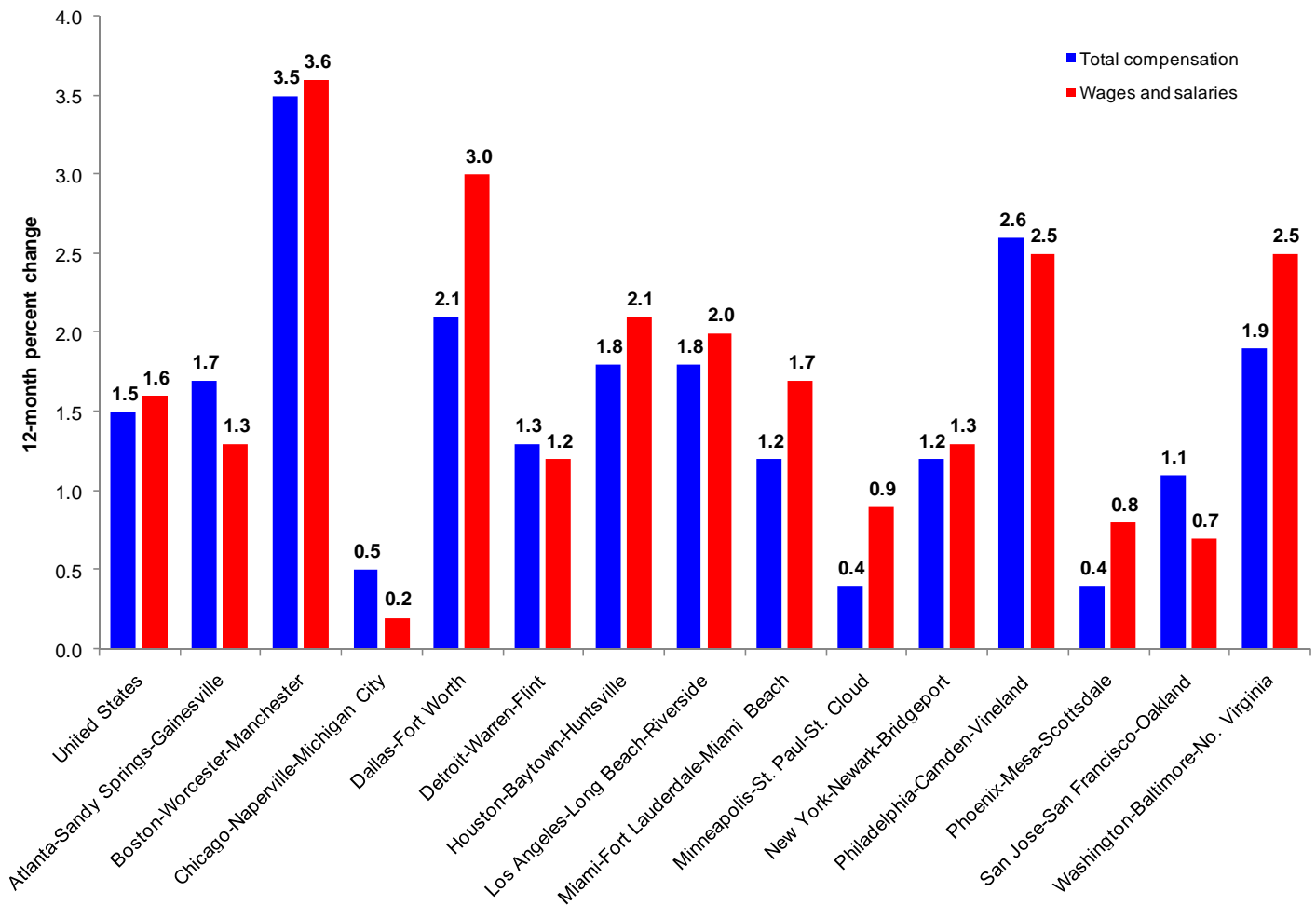
The "Employment Cost Index for the Regions" news releases have been discontinued. However, the estimates that appeared in those releases are available in table 6 (www.bls.gov/news.release/eci.t06.htm) and table 10 (www.bls.gov/news.release/eci.t10.htm) of the "Employment Cost Index" news release issued by the BLS National Office. Historical estimates for these series can be found at www.bls.gov/ncs/ect/regionaleci.htm.

San Jose is 1 of 14 metropolitan areas in the United States, and 1 of 3 areas in the West region of the country, for which locality compensation cost data are now available. Growth rates for total compensation and wages and salaries in San Jose were among the lowest when compared to changes in these other large metropolitan areas from June 2008 to June 2009. Among the 14 largest areas, over-the-year growth rates in the cost of total compensation ranged from 3.5 percent in Boston to 0.4 percent in both Minneapolis and Phoenix in June 2009; for wages and salaries, annual advances ranged from 3.6 percent in Boston to 0.2 percent in Chicago. (See chart B.)

The annual increase in total compensation costs in San Jose in June 2009, at 1.1 percent, compared to gains of 1.8 percent in Los Angeles and 0.4 percent in Phoenix, the two other metropolitan areas in the West. San Jose’s 0.7-percent gain in wages and salaries over this 12-month period compared to advances of 2.0 percent in Los Angeles and 0.8 percent in Phoenix. (See table 2.)

Locality compensation costs are part of the national Employment Cost Index (ECI), which measures quarterly changes in total compensation costs, which include wages, salaries and employer costs for employee benefits. In addition to the 14 locality estimates provided in this release, ECI data for the nation, 4 geographical regions, and 9 geographical divisions are available. (Geographical definitions for the metropolitan areas mentioned in this release are included in the Technical Note.)

Chart B. Percent change in the Employment Cost Index for total compensation and for wages and salaries, private industry workers, United States and localities, not seasonally adjusted, June 2008 to June 2009



In addition to the geographic data, a comprehensive national report is available that provides data by industry, occupational group, and union status, as well as for both private, and state and local government employees. The report on the Employment Cost Index and further technical information may be obtained from the U.S. Bureau of Labor Statistics, Western Regional Office by calling 415-625-2270. The report is also available on the Internet at <http://www.bls.gov/news.release/eci.toc.htm>. Current and historical information from other Bureau programs may be accessed via our regional homepage at www.bls.gov/ro9/. The ECI for September 2009 will be released on Friday, October 30, 2009 at 8:30 a.m. (ET). Information from the Employment Cost Index program is available to sensory impaired individuals upon request. Voice phone: 202-691-5200, Federal Relay Services: 1-800-877-8339.

Technical Note

The Employment Cost Index (ECI) is a measure of the change in the cost of labor, free from the influence of employment shifts among occupations and industries. The total compensation series includes changes in wages and salaries and employer costs for employee benefits.

Wages and salaries are defined as straight-time average hourly earnings or, for workers not paid on an hourly basis, straight-time earnings divided by the corresponding hours. Straight-time wage and salary rates are total earnings before payroll deductions, excluding premium pay for overtime, work on weekends and holidays, and shift differentials. Production bonuses, incentive earnings, commission payments, and cost-of-living adjustments are included in straight-time earnings, whereas nonproduction bonuses (such as Christmas or year-end bonuses) are excluded. Also excluded are such items as payments-in-kind, free room and board, and tips.

Selection of areas

Based on available resources and the existing ECI sample, it was determined that estimates would be published for 14 metropolitan areas. These 14 areas are located across all 4 geographic regions of the country. Since the ECI sample sizes by area are directly related to area employment, the areas with the largest private industry employment as of the year 2000 were selected. For each of these areas, 12-month percent changes and associated standard errors were computed for the periods since December 2006.

The metropolitan area definitions of the 14 published localities are listed below.

Atlanta-Sandy Springs-Gainesville, Ga.-Ala. Combined Statistical Area (CSA) includes Barrow, Bartow, Butts, Carroll, Cherokee, Clayton, Cobb, Coweta, Dawson, DeKalb, Douglas, Fayette, Forsyth, Fulton, Gwinnett, Hall, Haralson, Heard, Henry, Jasper, Lamar, Meriwether, Newton, Paulding, Pickens, Pike, Polk, Rockdale, Spalding, Troup, Upson, and Walton Counties in Georgia and Chambers County in Alabama.

Boston-Worcester-Manchester, Mass.-N.H. CSA includes Essex, Middlesex, Norfolk, Plymouth, Suffolk, and Worcester Counties in Massachusetts and Belknap, Hillsborough, Merrimack, Rockingham, and Strafford Counties in New Hampshire.

Chicago-Naperville-Michigan City, Ill.-Ind.-Wis. CSA includes Cook, DeKalb, DuPage, Grundy, Kane, Kankakee, Kendall, Lake, McHenry, and Will Counties in Illinois; Jasper, Lake, LaPorte, Newton, and Porter Counties in Indiana; and Kenosha County in Wisconsin.

Dallas-Fort Worth, Texas CSA includes Collin, Cooke, Dallas, Delta, Denton, Ellis, Henderson, Hood, Hunt, Johnson, Kaufman, Palo Pinto, Parker, Rockwall, Somervell, Tarrant, and Wise Counties in Texas.

Detroit-Warren-Flint, Mich. CSA includes Genesee, Lapeer, Livingston, Macomb, Monroe, Oakland, St. Clair, Washtenaw, and Wayne Counties in Michigan.

Houston-Baytown-Huntsville, Texas CSA includes Austin, Brazoria, Chambers, Fort Bend, Galveston, Harris, Liberty, Matagorda, Montgomery, San Jacinto, Walker, and Waller Counties in Texas.

Los Angeles-Long Beach-Riverside, Calif. CSA includes Los Angeles, Orange, Riverside, San Bernardino, and Ventura Counties in California.

Miami-Fort Lauderdale-Pompano Beach, Fla. Metropolitan Statistical Area (MSA) includes Broward, Miami-Dade, and Palm Beach Counties in Florida.

Minneapolis-St. Paul-St. Cloud, Minn.-Wis. CSA includes Anoka, Benton, Carver, Chisago, Dakota, Goodhue, Hennepin, Isanti, McLeod, Ramsey, Rice, Scott, Sherburne, Stearns, Washington, and Wright Counties in Minnesota and Pierce and St. Croix Counties in Wisconsin.

New York-Newark-Bridgeport, N.Y.-N.J.-Conn.-Pa. CSA includes Bronx, Dutchess, Kings, Nassau, New York, Orange, Putnam, Queens, Richmond, Rockland, Suffolk, Ulster, and Westchester Counties in New York; Bergen, Essex, Hudson, Hunterdon, Mercer, Middlesex, Monmouth, Morris, Ocean, Passaic, Somerset, Sussex, and Union Counties in New Jersey; Fairfield, Litchfield, and New Haven Counties in Connecticut; and Pike County in Pennsylvania.

Philadelphia-Camden-Vineland, Pa.-N.J.-Del.-Md. CSA includes Bucks, Chester, Delaware, Montgomery, and Philadelphia Counties in Pennsylvania; Burlington, Camden, Cumberland, Gloucester, and Salem Counties in New Jersey; New Castle County in Delaware; and Cecil County in Maryland.

Phoenix-Mesa-Scottsdale, Ariz. MSA includes Maricopa and Pinal Counties in Arizona.

San Jose-San Francisco-Oakland, Calif. CSA includes Alameda, Contra Costa, Marin, Napa, San Benito, San Francisco, San Mateo, Santa Clara, Santa Cruz, Sonoma, and Solano Counties in California.

Washington-Baltimore-Northern Virginia, D.C.-Md.-Va.-W.Va. CSA includes the District of Columbia; Baltimore City and Anne Arundel, Baltimore, Calvert, Carroll, Charles, Frederick, Harford, Howard, Montgomery, Prince George's, Queen Anne's, and St. Mary's Counties in Maryland; Alexandria, Fairfax, Falls Church, Fredericksburg, Manassas, Manassas Park, and Winchester Cities and Arlington, Clarke, Fairfax, Fauquier, Frederick, Loudoun, Prince William, Spotsylvania, Stafford, and Warren Counties in Virginia; and Hampshire and Jefferson Counties in West Virginia.

Definitions of the four geographic regions of the country are noted below.

Northeast: Connecticut, Maine, Massachusetts, New Hampshire, New Jersey, New York, Pennsylvania, Rhode Island, and Vermont.

South: Alabama, Arkansas, Delaware, the District of Columbia, Florida, Georgia, Kentucky, Louisiana, Maryland, Mississippi, North Carolina, Oklahoma, South Carolina, Tennessee, Texas, Virginia, and West Virginia.

Midwest: Illinois, Indiana, Iowa, Kansas, Michigan, Minnesota, Missouri, Nebraska, North Dakota, Ohio, South Dakota, and Wisconsin.

West: Alaska, Arizona, California, Colorado, Hawaii, Idaho, Montana, Nevada, New Mexico, Oregon, Utah, Washington, and Wyoming.

Table 1. Employment Cost Index for total compensation and for wages and salaries, private industry workers, United States, West region, and the San Jose area, not seasonally adjusted

Area	Total compensation				Wages and salaries			
	12-month percent changes for period ended—				12-month percent changes for period ended—			
	March	June	September	December	March	June	September	December
United States								
2007	3.2	3.1	3.1	3.0	3.6	3.3	3.4	3.3
2008	3.2	3.0	2.8	2.4	3.2	3.1	2.9	2.6
2009	1.9	1.5			2.0	1.6		
West								
2007	3.6	3.0	3.1	3.4	4.1	3.2	3.4	3.7
2008	3.5	3.3	3.4	2.7	3.3	3.3	3.5	2.9
2009	1.9	1.6			2.0	1.7		
San Jose-San Francisco-Oakland								
2007	4.7	3.2	3.4	3.8	5.1	3.3	3.9	4.5
2008	3.7	3.6	3.5	2.7	3.5	3.6	3.2	2.3
2009	1.5	1.1			1.3	0.7		

Table 2. Employment Cost Index for total compensation and for total wages and salaries, private industry workers, United States, geographical regions, and localities, not seasonally adjusted

Area	Total compensation			Wages and salaries		
	12-month percent changes for			12-month percent changes for		
	June 2008	March 2009	June 2009	June 2008	March 2009	June 2009
United States	3.0	1.9	1.5	3.1	2.0	1.6
Northeast	2.9	2.2	1.9	3.0	2.2	1.9
Boston-Worcester-Manchester	2.5	3.5	3.5	2.7	3.9	3.6
New York-Newark-Bridgeport	3.0	1.7	1.2	3.0	1.8	1.3
Philadelphia-Camden-Vineland	4.4	4.4	2.6	4.6	4.6	2.5
South	3.0	1.9	1.5	3.3	2.1	1.5
Atlanta-Sandy Springs-Gainesville	1.9	0.8	1.7	2.0	0.7	1.3
Dallas-Fort Worth	2.7	1.9	2.1	2.5	2.5	3.0
Houston-Baytown-Huntsville	2.4	2.1	1.8	2.6	2.3	2.1
Miami-Fort Lauderdale-Miami Beach	3.2	1.6	1.2	4.6	3.3	1.7
Washington-Baltimore-Northern Virginia	2.7	2.0	1.9	2.7	2.2	2.5
Midwest	2.7	1.8	1.0	3.0	2.0	1.0
Chicago-Naperville-Michigan City	3.4	1.9	0.5	3.5	1.5	0.2
Detroit-Warren-Flint	1.5	2.6	1.3	1.8	3.3	1.2
Minneapolis-St. Paul-St. Cloud	2.5	0.5	0.4	2.3	1.1	0.9
West	3.3	1.9	1.6	3.3	2.0	1.7
Los Angeles-Long Beach-Riverside	2.6	1.4	1.8	2.5	1.5	2.0
Phoenix-Mesa-Scottsdale	3.6	2.5	0.4	3.7	3.0	0.8
San Jose-San Francisco-Oakland	3.6	1.5	1.1	3.6	1.3	0.7