



# State of Alaska

## Department of Fish & Game

### Division of Sport Fish

## 2008 Saltwater Charter Logbook and Vessel Registration

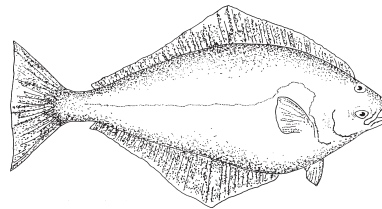
*Vessel  
Name:*

*(THIS LOGBOOK MUST REMAIN WITH THIS VESSEL)*

**AND**

*Vessel AK. #:  
or  
U.S.C.G. #:*

Please follow the **INSTRUCTIONS** carefully as they have changed.



### **LOGBOOK INSPECTION**

Upon request from any representative of the Department or any peace officer of the state, a person is required to present this *Alaska Department of Fish and Game Saltwater Sportfishing Charter Vessel Logbook* for inspection.

## 2008 Saltwater Logbook Trip Reporting Requirements.

<b><u>Monday</u> through <u>Sunday</u> Activity</b>		<b>Must be <u>Postmarked</u> OR <u>Received</u> by</b>
<b>During the <u>Week</u> of:</b>		<b>ADF&amp;G on (Mondays):</b>
Saltwater Activity from January 1 through April 6, 2008		April 14
Week 2	April 7 – April 13	April 21
Week 3	April 14 – April 20	April 28
Week 4	April 21 – April 27	May 5
Week 5	April 28 – May 4	May 12
Week 6	May 5 – May 11	May 19
Week 7	May 12 – May 18	May 26
Week 8	May 19 – May 25	June 2
Week 9	May 26 – June 1	June 9
Week 10	June 2 – June 8	June 16
Week 11	June 9 – June 15	June 23
Week 12	June 16 – June 22	June 30
Week 13	June 23 – June 29	July 7
Week 14	June 30 – July 6	July 14
Week 15	July 7 – July 13	July 21
Week 16	July 14 – July 20	July 28
Week 17	July 21 – July 27	August 4
Week 18	July 28 – August 3	August 11
Week 19	August 4 – August 10	August 18
Week 20	August 11 – August 17	August 25
Week 21	August 18 – August 24	September 1
Week 22	August 25 – August 31	September 8
Week 23	September 1 – September 7	September 15
Week 24	September 8 – September 14	September 22
Week 25	September 15 – September 21	September 29
Week 26	September 22 – September 28	October 6
Week 27	September 29 – October 5	October 13
Week 28	October 6 – October 12	October 20
Week 29	October 13 – October 19	October 27
Week 31	October 20 – October 26	November 3
Week 32	October 27 – November 2	November 10
Week 33	November 3 – November 9	November 17
Week 34	November 10 – November 16	November 24
Week 35	November 17 – November 23	December 1
Week 36	November 24 – November 30	December 8
Week 37	December 1 – December 7	December 15
Week 38	December 8 – December 14	December 22
Week 39	December 15 – December 21	December 29
Week 40	December 22 – December 31	January 12, 2009

 **ADF&G REPRESENTATIVE:**

**DO NOT ISSUE A LOGBOOK UNLESS THE APPLICANT HAS THE FOLLOWING:**

- ⇒ 2008 ADF&G Sport Fish Business and Guide License
- ⇒ Current AK Vessel Number issued by DMV or Current U.S.C.G. Vessel Documentation No.

**NONE OF THE ABOVE CAN BE "PENDING"**

A logbook issued without the above items will result in a processing delay and a return of the sign-out sheet to the issuing office for your completion and follow-up. Subsequent data sheets will NOT be processed until the information is complete.

2008 ADF&G Sport Fish Business Owner and Guide License applications are available at all ADF&G offices or online at:

<http://www.admin.adfg.state.ak.us/license/>

AK Vessel Registration # is available from Alaska Div. of Motor Vehicles at (907)269-5551 or online at:

<http://www.state.ak.us/local/akpages/ADMIN/dmv/reg/boat.htm>



State of Alaska, Department of Fish & Game  
Division of Sport Fish - RTS  
333 Raspberry Rd.  
Anchorage, AK 99518

**2008 Saltwater Sport Fish Charter Logbook Sign-Out AND Vessel Registration**

*Must be completed*

**INSTRUCTIONS TO ADF&G REPRESENTATIVE:** Please forward the white copy of this form to Sport Fish Research & Technical Services, 333 Raspberry Rd., Anchorage, AK 99518. ADF&G area offices should keep the pink copy.

**SPORT FISH BUSINESS INFORMATION:**

Name of Sport Fishing Business: \_\_\_\_\_

Sport Fish Business Owner License Number (avail. from ADF&G): 08- \_\_\_\_\_  
*(A logbook WILL NOT be issued without a current ADF&G Business License Number)*

**SPORT FISHING CHARTER VESSEL REGISTRATION:**

⇒ DMV issued AK No. or Vessel U.S.C.G. Documentation No. (**REQUIRED**): \_\_\_\_\_  
*(A logbook WILL NOT be issued without a current AK or U.S.C.G. number)*

⇒ Vessel Name: \_\_\_\_\_ *(Put vessel name and AK No. or U.S.C.G. # on cover also)*

⇒ Primary Alaska port from which this vessel will operate during 2008: \_\_\_\_\_

**DEPARTMENT USE ONLY**

⇒ Did you issue a Stat. Area Map? YES  NO  If No, Explain:

⇒ ADF&G Representative: (*print*) \_\_\_\_\_

⇒ Area Office: \_\_\_\_\_ Date of Issue: \_\_\_\_\_

# INSTRUCTIONS FOR COMPLETING THE 2008 SALTWATER SPORT FISHING CHARTER TRIP LOGBOOK FORMS

## WHEN TO COMPLETE A LOGBOOK

### CLIENT INFORMATION:

#### BEFORE A TRIP BEGINS, THE GUIDE MUST RECORD:

- The 2008 sport fishing license number, permanent identification number (PID) or disabled veteran (DAV) license number for anyone that will fish during any part of the trip, including paying and non-paying (comped) anglers and crew.
- The first and last name of each angler in the space provided below their license number.
- The birth date and first and last name and of each youth angler under the age of 16.
- For each angler, the number of Halibut kept year-to-date (YTD) in IPHC area 2C in the "YTD in 2C" box from the back side of the angler's fish license or 2008 Harvest Record card.

#### AT THE END OF A FISHING TRIP:

- The guide that leads the trip must sign and complete the logbook page at the end of each day of fishing or at the end of each trip within a day (for multiple trips within a day) as described below.

**THE GUIDE THAT LEADS THE TRIP IS REQUIRED TO FILL OUT THIS LOGBOOK THROUGH THE LAST TRIP OF THE SEASON PER THE FOLLOWING SCHEDULE:**

#### RETURNING TO A DOCK:

- **Complete the logbook before offloading any fish from the vessel. If no fish were kept, complete the logbook before offloading any clients.**

#### NO DOCKING FACILITIES (e.g., trailered vessels):

- **Complete the logbook before the vessel or guide departs the launch/landing site AND before offloading any fish from the vessel:**
- **If no fish were kept, complete the logbook before the vessel or guide departs the launch/landing site.**

#### NO VESSEL USED (aircraft, highway vehicles, walk-in, ATVs, etc.):

- **Complete the logbook before the guide leaves the fishing site. Fishing site is defined as the location where fishing activity took place.**

## WHEN TO COMPLETE A LOGBOOK (cont'd)

**A TRIP IS DEFINED** as one outing with one group of clients that ends when that group of clients OR fish (if fish were kept), are off-loaded or dropped off.

A trip that consists of no paying clients, that is, all anglers are "comped", would NOT be considered a chartered trip and a logbook data sheet should not be completed.

#### MULTIPLE TRIPS PER DAY

Each trip of multiple trips in a day should be logged on a separate logbook sheet. Complete the logbook at the end of each trip as described above.

#### MULTIPLE DAY TRIPS

Complete the logbook at day's end for each day of the trip. Use a separate logbook data sheet for each day of that trip.

**Do not complete trip information for those days when guided fishing activity did not occur. For example, if a multi-day trip of five days occurred and only three days included charter fishing, only three logbook sheets should be completed and returned.**

## RETURN THE LOGBOOK REPORTS WEEKLY

All charter fishing activity that occurs between April 7, 2008 through December 31, 2008 must be received by ADF&G offices or postmarked per the WEEKLY schedule provided on the inside cover of this logbook.

Fishing activity that occurs prior to April 7, 2008 is due to ADF&G by April 14, 2008.

## RESPONSIBILITY OF OWNER & GUIDE

It is the responsibility of the guide to ensure that daily trip activity is accurately recorded as previously described.

It is the responsibility of the business owner (owner of the sport fish operator's license) to ensure that all data for fishing activities from January 1, 2008 through December 31, 2008 is submitted to ADF&G in the manner previously described.

## VESSEL REGISTRATION

If a vessel is used in sport fishing guide activities it must be registered with ADF&G. All vessels must have a current AK number issued by the Division of Motor Vehicles (DMV) or a U.S.C.G. documentation number prior to registering with ADF&G. **If the vessel has an AK number, the AK number must be displayed during guided fishing operations.**

If a vessel is purchased, leased, or borrowed in mid-season, it must have a current AK or U.S.C.G. documentation number, and ADF&G must be notified (see contact information on page iv). New decals can be acquired from ADF&G, or decals from an unused vessel can be transferred. All vessels used in the sport fishing guide industry with clients onboard, must have two decals visibly displayed. A **new logbook** must be issued to this vessel if this vessel is intended to be used for the remainder of the season OR used for more than **seven (7) consecutive days**.

## VESSEL DECALS/RENEWAL TAGS

One set of ADF&G decals will be issued per registered vessel. Decals must be applied and visible on both sides of the vessel. Decals do not have to be applied directly to the hull of the vessel. Decals can be adhered to wood, fiberglass or "Plexiglas", which in turn is secured to both sides of the vessel. Decals can be transferred from one vessel to another, as long as the receiving vessel has a current AK number from DMV or a U.S.C.G. documentation number and has been registered with ADF&G. Decals are designed to withstand several years of use. Annual renewal stickers or tags will be issued as vessels are registered. Annual renewal tags are to be adhered directly to the decal in the designated area.

## TRANSFERRING A LOGBOOK

A logbook is issued to a specific business for a specific vessel. If a **new vessel** is added to the same business, that vessel must be registered and a new logbook will be issued from a local ADF&G office.

If another vessel is substituted for the primary vessel during a temporary period, the **substituted vessel** must have a current AK number or a U.S.C.G. documentation number and be registered with ADF&G (see contact information on page iv). Vessel decals must be displayed on the substitute vessel. The original logbook can be used on the substitute vessel for up to **seven (7) consecutive days**. A temporary vessel used for a longer period of time must be issued a new logbook. See vessel registration instructions above.

# INSTRUCTIONS FOR COMPLETING THE 2008 SALTWATER SPORT FISHING CHARTER TRIP LOGBOOK FORMS

BUSINESS INFORMATION	
<b>Business Owner License Number</b>	The 2008 license number issued to you by the Department of Fish and Game (ADF&G) upon meeting all the requirements to become a sport fish charter business.
<b>Guide License Number</b>	The 2008 guide license number issued by ADF&G to the guide that led the fishing trip.
TRIP INFORMATION	
<b>Date</b>	The date (month and day) for each trip taken. If two or more trips were taken on the same day, that date will appear on as many data sheets as there were trips. Although the date would be the same, client information and trip specifics may differ.
<b>Port or Community where fishing trip began</b>	The port or community where clients were loaded onto a vessel to begin a fishing trip. If no vessel was used, the nearest port or community from which the fishing trip started.
<b>Port or Community of Off-Loading</b>	The port or community where clients and/or fish were off-loaded at the conclusion of the trip. On a multi-day trip, indicate the community where fish and clients will be off-loaded.
<b>Total no. of clients on the vessel</b>	The total no. of paying clients on board the vessel. Include even those who did not catch anything and those that did not fish. Do <b>not</b> include crew members or “comped” anglers. A “ <b>comped</b> ” angler is an angler who is <b>not paying</b> for the trip, and can include family, friends or other acquaintances.
<b>Primary Stat Area Fished</b>	The 6-digit stat area code where most of the fish were caught or targeted on the trip. Write the code down next to either salmon or bottomfish, depending on what was primarily caught. <b>An operator must decide if gear and fishing methods were effectively targeting salmon, bottomfish, or both fishing groups.</b> If no fish were caught, write the 6-digit code for the location primarily fished on this date and trip. Refer to the maps provided by ADF&G.
<b>No. of Boat Hours Fished</b>	The number of boat hours where at least one rod/line was fished. Record only the number of hours spent fishing, NOT hours spent running to or from fishing areas. Round to the nearest whole hour.

TRIP INFORMATION (cont'd)	
<b>Circling IPHC area fished</b>	Circle the International Pacific Halibut Commission (IPHC) area fished where halibut were kept. The IPHC area fished must be circled for each trip taken. <b>SEE IPHC MAP ON PAGE V</b> If multiple IPHC areas were fished during a trip when halibut were <b>KEPT</b> , a separate logbook data sheet must be completed for each IPHC area fished.
<b>Page no.</b>	On each logsheet, record the page no. if multiple pages were necessary to fit in all the client information. Note the total no. of pages used for that trip.

INDIVIDUAL ANGLER INFORMATION	
<b>Sport Fish License No. and Angler Name</b>	Before beginning sport fishing, record the 2008 Alaska Sport Fishing License number, resident PID (permanent identification number) or DAV (disabled veteran license number) of <b>each angler, comped angler, and crew that will be fishing.</b>  Angler’s first and last name <b>MUST</b> be printed by the guide <b>below the angler’s license number.</b>  Record the <b>Date of Birth</b> and <b>First and Last Name</b> (for example: 8/28/98, Johnny Doe) for youth anglers under the age of 16.  Next to each fishing license number: <ul style="list-style-type: none"> <li>➤ circle <b>C</b> if angler is a <b>Crew member</b>,</li> <li>➤ circle <b>X</b> if angler is “<b>Comped</b>” (nonpaying),</li> <li>➤ All other anglers, circle <b>N</b> for Nonresident or <b>R</b> for Resident</li> </ul> <p style="text-align: center;"><b>DO NOT MARK RESIDENCY FOR CREW and “COMPED”, CIRCLE “C” or “X” ONLY.</b></p>
<b>Residency, Crew status and “Comped” anglers</b>	

CATCH INFORMATION	
<b>Recording Catch Information</b>	Indicate the number of fish <b>Kept</b> (retained) and <b>Released</b> (let go) by species type.
<b>EXAMPLE 1: One target Salmon</b>	If bottomfish were caught while targeting salmon <b>only</b> , record the number of bottomfish in the appropriate columns in the bottomfish section. <b>Trip Information</b> on the left should still reflect salmon as the targeted species.  If salmon were targeted but no salmon were caught, record the trip, stat area fished, and hours within the salmon section under <b>Trip Information</b> .
<b>EXAMPLE 2: One target Bottomfish (incl. Halibut)</b>	If salmon were caught while targeting bottomfish <b>only</b> , record the number of salmon in the appropriate columns in the salmon section. <b>Trip Information</b> on the left should still reflect bottomfish as the targeted species.  If bottomfish were targeted but no bottomfish were caught, record the trip, stat area fished, and hours within the bottomfish section under <b>Trip Information</b> .
<b>EXAMPLE 3: Two targets Salmon and Bottomfish</b>	Record the maximum number of boat hours spent fishing simultaneously for both salmon AND bottomfish under the <b>Trip Information, Primary Stat Area</b> section. For example, if mooching or jigging for 7 hours record 7 hours in the salmon effort row, and 7 hours in the bottomfish effort row.

CONTINUING TRIP INFORMATION
Check the box in the lower right corner if trip information is continued on extra pages. For instance; <ul style="list-style-type: none"> <li>➤ More than 8 anglers on this trip (there would be no need to repeat the Trip information, angler information would be completed).</li> <li>➤ Halibut are kept in two different IPHC areas during a trip (all angler information and IPHC and statistical areas fished must be completed).</li> </ul>

CONTACT INFORMATION
For questions or to register a vessel, please contact: <ul style="list-style-type: none"> <li>• Division of Sport Fish, Guide Licensing and Logbook Program in Anchorage, Alaska at (907) 267-2369, or</li> <li>• Email to: <a href="mailto:dfg.dsf.guides@alaska.gov">dfg.dsf.guides@alaska.gov</a></li> </ul>

# INSTRUCTIONS FOR COMPLETING THE 2008 SALTWATER SPORT FISHING CHARTER TRIP LOGBOOK FORMS

## SPECIAL NOTES AND INSTRUCTIONS

### Halibut (YTD in 2C)

**Before** beginning a fishing trip, the guide must record the number of **HALIBUT** kept, year-to-date, in IPHC Area 2C as recorded on the back of the sport fishing license or Harvest Record card in the **YTD in 2C** column of the logbook for EACH angler.

**Area 2C is defined** as all waters off Alaska that are east of a line running 340° true from Cape Spencer Light (58° 11' 54" N. lat., 135° 38' 24" W. long.) and south and east of a line running 205° true from said light.

### "Shakers"

King salmon under 28" in Southeast Alaska that must be released upon capture, unless caught in designated terminal harvest areas.

### Pelagic Rockfish

Includes black, dark and dusky rockfish (commonly called "black bass") and yellowtail rockfish.

These species of rockfish are uniformly gray, green, brown, or black (see rockfish ID chart in your regulation booklet).

### Yelloweye Rockfish

Commonly called "red snapper." Primarily orange with a pale yellow line running along the lateral line of the fish. Distinctive yellow eyes. Measure up to 36 inches.

### Other Non-pelagic Rockfish

All other rockfish not mentioned above. Includes quillback, and copper rockfish, as well as numerous other species.

### Salmon Shark

This is a single species, *Lamna ditropis*. These sharks are large, firm, dark brown or black on top, with white bellies with dark blotches. Do not include spiny dogfish ("sand shark") or sleeper sharks ("mud sharks") in this category.

### Other Fish (optional)

Record all OTHER fish kept that do not fit into any listed category of fish.

This column is **optional** and intended to assist you in keeping track of other species of fish that were kept. It is **not mandatory** that you fill this column out.

## PROXY FISHING INSTRUCTIONS

If an angler is also proxy fishing for a beneficiary, that client **MUST** have the fishing license or PID/DAV of the person for whom he/she is fishing. Write down the license number of the recipient of the fish (beneficiary), followed by a "**P**" to indicate proxy, e.g. **8123456-P**.

Use two records on the logbook data sheet, one for the angler's license number and name and the other record for the beneficiary's license number and name. Indicate **R** for Resident in the adjacent column for both. Beneficiaries and those fishing for them **must** be residents of Alaska.

For **permanent** licenses (residents only), write down the entire license number, including the preceding alpha character, which can be a **P, D, T** or **Z**, e.g. **Z50148-P**.

Federal law prohibits the taking of more than two HALIBUT per person per day. You may **NOT** take two bag limits of HALIBUT on the same day, even when proxy fishing.

## WHAT A GUIDE MUST HAVE IN POSSESSION WHILE GUIDING

While providing sport fishing guide services, a sport fishing guide shall have the following readily available for inspection by request of a representative of the Department or a peace officer of the state:

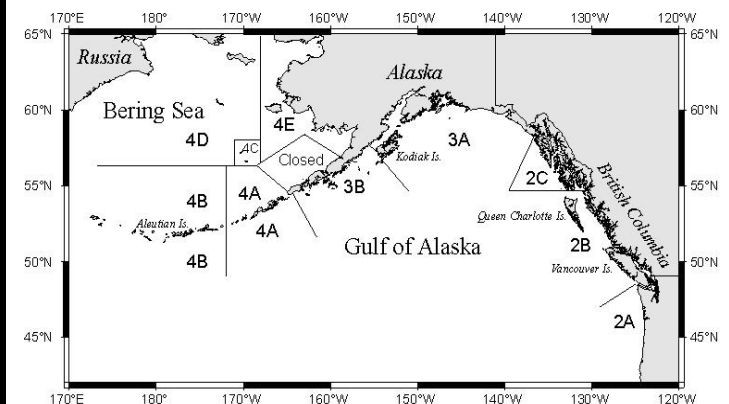
- Valid sport fishing guide license issued by ADF&G;
- Copy of the current ADF&G sport fishing operator's (business owner) license of the guide's employer;
- Valid Alaska sport fishing license, tags, stamps or permits that are required to engage in the sport fishery for which guide services are being provided;
- Identification card issued to the sport fishing guide by a state or federal agency that bears a photo of the sport fishing guide.
- **Other agencies may have additional requirements (e.g. U.S.C.G). It is your responsibility to determine what those requirements are.**

## THESE 2008 HALIBUT CHARTER CHANGES TO THE SALTWATER LOGBOOK WERE IMPLEMENTED BY THE NATIONAL MARINE FISHERIES SERVICE (NMFS)

1. **PORT OR COMMUNITY WHERE FISHING TRIP BEGAN.**
2. **IPHC AREA (2C, 3A, 3B or 4) WHERE HALIBUT WERE KEPT.**
3. **ANGLER FIRST AND LAST NAME.**
4. **FIRST AND LAST NAME AND DATE OF BIRTH OF YOUTH ANGLERS UNDER 16.**
5. **NUMBER OF HALIBUT KEPT YEAR-TO-DATE (YTD) IN IPHC AREA 2C.**
6. **ANGLER SIGNATURE ON THE BACK OF EACH LOGBOOK DATA PAGE.**

**For Additional information on new National Marine Fisheries Service charter logbook requirements for halibut, contact:**

**Marla Trollan at (907) 586-7639 or  
marla.trollan@noaa.gov**





**COMPLETE THIS SECTION FOR EVERY TRIP**

2008 FISH & GAME BUSINESS OWNER LICENSE #: 1234  
(License # assigned to you by ADF&G).

2008 FISH & GAME GUIDE LICENSE #: 5678

**TRIP INFORMATION**

DATE FISHED: MO: 7 DAY: 12, 2008.

PORT OR COMMUNITY WHERE FISHING TRIP BEGAN: Juneau  
(Port or Community where clients were loaded and trip began)

PORT OR COMMUNITY OF OFF-LOADING: Juneau  
(Port or Community where fish or clients were off-loaded from vessel)

TOTAL NO. PAYING CLIENTS ON THE VESSEL: 5  
(Include ALL paying clients, even those that did not fish and those who did not catch anything. DO NOT include "comped" anglers or crew members that fished).

PRIMARY STAT AREA & BOAT HOURS:

Targeted Species	Primary Stat. Area where most fish were caught. (6-digit Code)	No. of Boat Hours Fished this Trip
Salmon	112120	3
Bottomfish	112120	4

COMPLETE THE FOLLOWING FOR ALL TRIPS

Circle the IPHC Area Fished if HALIBUT were Kept during this trip:  2C  3A  3B  4  
(Circle Only One)

If HALIBUT were kept in more than one IPHC area during this trip, a separate logbook data sheet must be used for each IPHC area fished.

PAGE NO. 1 OF 1 (TOTAL NO. OF PAGES FOR THIS TRIP).

**INSTRUCTIONS: Complete one row below for each angler who fished on this trip.**

**INDIVIDUAL ANGLER AND CATCH INFORMATION**

Sport Fishing License Number AND printed name of each angler that fished	Circle next to each License if Resident, Nonresident, X if Comped, or C if Crew	Number of King Salmon			Number of Other Salmon			Number of Halibut		Number of Lingcod		Number of Pelagic Rockfish (black bass, etc.)		Number of Yelloweye Rockfish		Number of Nonpelagic Rockfish (not including Yelloweye)		Number of Salmon Shark	All Other Fish (optional)
		28"	30"	32"	Sockeye	Pink	Chum	Kept	Rele	Kept	Rele	Kept	Rele	Kept	Rele	Kept	Rele		
1. <u>8012345</u> <u>Larry Lure</u>	R <input checked="" type="radio"/> <input type="radio"/> <input type="radio"/> <input type="radio"/>							1	1			2							
2. <u>Z50148 - P</u> <u>Robby Norow</u>	<input checked="" type="radio"/> <input type="radio"/> <input type="radio"/> <input type="radio"/>																2	2	
3. <u>8023336</u> <u>Doug Drift</u>	<input checked="" type="radio"/> <input type="radio"/> <input type="radio"/> <input type="radio"/>	1						0	1										
4. <u>08/28/98</u> <u>Bryan Baiter</u>	<input checked="" type="radio"/> <input type="radio"/> <input type="radio"/> <input type="radio"/>		1					2	1						1	2	1		1
5. <u>8054321</u> <u>Mary Bile</u>	R <input checked="" type="radio"/> <input type="radio"/> <input type="radio"/> <input type="radio"/>	1																	
6. <u>8012346</u> <u>Jerry Jig</u>	R <input type="radio"/> <input checked="" type="radio"/> <input type="radio"/> <input type="radio"/>	2																	
7. _____																			
8. _____																			

Date that fishing took place. This date may appear more than once if multiple trips were taken in a single day.

Next to each fishing license number: Circle C if angler is a Crew member. Circle X if angler is "Comped" All other anglers, Circle N for Nonresident or R for Resident. DO NOT mark the residency for crew or "comped". Circle "C" or "X" only.

Note that two anglers had kept Halibut on previous charters in 2C. The number of Halibut previously kept on another charter in 2C is to be recorded prior to beginning sport fishing.

Note that there were 6 anglers on board but only 5 were paying clients, 1 was a "comped" angler. Of the 5 paying clients 1 angler fished by proxy (Z50148 - P).

Note that one fish not already specified on this page was kept. This column is optional, you do not need to fill it out.

Both salmon and bottomfish were targeted. This was a 7 hour trip, 3 hours were spent targeting salmon, 4 hours were spent targeting bottomfish.

The guide must sign the bottom of every logsheet for each trip he/she was in charge of.

Continue on another page if more than 8 clients, or if a different IPHC area was fished where halibut were kept.

Form 11-540 (01-2008)



**COMPLETE THIS SECTION FOR EVERY TRIP**

➔ 2008 FISH & GAME BUSINESS OWNER LICENSE #:  
\_\_\_\_\_  
*(License # assigned to you by ADF&G)*

➔ 2008 FISH & GAME GUIDE LICENSE #:  
\_\_\_\_\_

**TRIP INFORMATION**

➔ DATE FISHED: MO: \_\_\_\_\_ DAY: \_\_\_\_\_, 2008.

➔ PORT OR COMMUNITY WHERE FISHING TRIP BEGAN:  
\_\_\_\_\_  
*(Port or Community where clients were loaded and trip began)*

➔ PORT OR COMMUNITY OF OFF-LOADING:  
\_\_\_\_\_  
*(Port or Community where fish or clients were off-loaded from vessel)*

➔ TOTAL NO. PAYING CLIENTS ON THE VESSEL: \_\_\_\_\_  
*(Include ALL paying clients, even those that did not fish and those who did not catch anything)*  
*(DO NOT include "comped" anglers and crew members that fished)*

➔ PRIMARY STATAREA & BOAT HOURS:

Targeted Species	Primary Stat. Area where most fish were caught. (6-digit Code)	No. of Boat Hours Fished this Trip
Salmon		
Bottomfish		

**COMPLETE THE FOLLOWING FOR ALL TRIPS**

Circle the IPHC Area Fished if HALIBUT were Kept during this trip: 2C 3A 3B or 4  
*(Circle Only One)*

If HALIBUT were kept in more than one IPHC area during this trip, a separate logbook data sheet must be used for each IPHC area fished.

➔ PAGE NO. \_\_\_\_\_ OF \_\_\_\_\_ (TOTAL NO. OF PAGES FOR THIS TRIP).

**INSTRUCTIONS: Complete one row below for each angler who fished on this trip.**

**INDIVIDUAL ANGLER AND CATCH INFORMATION**

Sport Fishing License Number AND printed name of each angler that fished  OR Record those anglers under 16 by Birthdate (e.g., 8/28/1998) and First & Last Name.	Circle next to each License if Resident, Nonresident, X for "Comped" or Crew	Number of King Salmon						Number of Other Salmon						Number of Halibut		Number of Lingcod		Number of Pelagic Rockfish (black bass, etc.)		Number of Yelloweye Rockfish		Number of Nonpelagic Rockfish (not including Yelloweye)		Number of Salmon Shark	All Other Fish (optional)	
		28" and Larger		"Shakers" Less Than 28"		Coho		Sockeye	Pink	Chum	YTD Kept In 2C		Kept		Rele		Kept		Rele		Kept		Kept			
		Kept	Rele	Kept	Rele	Kept	Rele	Kept	Kept	Kept	Kept	Kept	Rele	Kept	Rele	Kept	Rele	Kept	Rele	Kept	Rele	Kept				
		<b>SALMON</b>												<b>BOTTOMFISH</b>												
1. LICENSE NUMBER	R N X C																									
ANGLER NAME																										
2. LICENSE NUMBER	R N X C																									
ANGLER NAME																										
3. LICENSE NUMBER	R N X C																									
ANGLER NAME																										
4. LICENSE NUMBER	R N X C																									
ANGLER NAME																										
5. LICENSE NUMBER	R N X C																									
ANGLER NAME																										
6. LICENSE NUMBER	R N X C																									
ANGLER NAME																										
7. LICENSE NUMBER	R N X C																									
ANGLER NAME																										
8. LICENSE NUMBER	R N X C																									
ANGLER NAME																										

**CERTIFICATION:** I certify that the information contained in this document is true and correct to the best of my knowledge.

X \_\_\_\_\_  
GUIDE SIGNATURE

CONTINUE ON NEXT PAGE IF MORE THAN 8 ANGLERS.

CHECK IF TRIP INFORMATION IS CONTINUED ON NEXT PAGE:



**The National Marine Fisheries Service (NMFS)** requires each angler on a charter vessel who keeps halibut caught in IPHC Area 2C to sign the back of the logbook data sheet on the line number that corresponds to the angler's information on the front of the sheet. This acknowledges that his or her information and the number of halibut kept are recorded correctly. NMFS regulations also require each angler to record the number of halibut kept in Area 2C on his or her sport fish license or harvest record card and retain this information for a period of three years.

For additional information on the new National Marine Fisheries requirements for halibut, contact:  
Marla Trollan – (907) 586-7639 or [marla.trollan@noaa.gov](mailto:marla.trollan@noaa.gov)

<u>Angler Number</u>	<u>Angler Signature</u>
1.	_____
2.	_____
3.	_____
4.	_____
5.	_____
6.	_____
7.	_____
8.	_____

**Fold and Insert into an Envelope and mail to the following address:**

**Alaska Department of Fish and Game  
Division of Sport Fish – RTS  
Logbook Program**



***Up to 3 pages can be mailed for the cost of one First Class stamp.***

**333 Raspberry Road  
Anchorage, AK 99518-1599**

(Fold here)

(Fold here)