



U.S. Department  
of Transportation  
**Federal Aviation  
Administration**

# **ADMINISTRATOR'S FACT BOOK**

## **May 2002**

(Updated quarterly)

Produced by:  
Assistant Administrator for Financial Services  
Office of Cost and Performance Management  
Standards and Information Division

Web site: <http://www.atctraining.faa.gov/factbook>



## **FAA VISION**

*To provide the safest, most efficient and responsive aerospace system in the world, and to be the best Federal employer, continuously improving service to customers and employees.*

### **FAA Mission**

*FAA provides a safe, secure, and efficient global aerospace system that contributes to national security and the promotion of US aerospace safety.*

*As the leading authority in the international aerospace community, FAA is responsive to the dynamic nature of customer needs, economic conditions, and environmental concerns.*

# ***FAA VALUES***

## ***We Believe in***

- ☆ *Trust*
- ☆ *Integrity*
- ☆ *Honesty*
- ☆ *Involvement*
- ☆ *Teamwork*
- ☆ *Diversity*
- ☆ *Respect*

## ***We Are Committed To***

- ☆ *Responsiveness*
- ☆ *Quality*
- ☆ *Timeliness*
- ☆ *Fiscal Responsibility*
- ☆ *Accountability*
- ☆ *Communication*

## ***We Will Achieve These Values By***

- ☆ *Giving people what they need, then letting them do their jobs.*
- ☆ *Making timely decisions at the lowest level and respecting them.*
- ☆ *Committing our best to our customers.*
- ☆ *Valuing our people.*
- ☆ *Being open to new ideas.*
- ☆ *Speaking out for what we believe, even when it is unpopular.*
- ☆ *Recognizing each person's contributions and realizing each person's full potential.*
- ☆ *Collaborating across organizations.*
- ☆ *Taking pride in what we do.*

# Table of Contents

<b>FAA Vision and Mission .....</b>	<b>Inside Front Cover</b>
<b>FAA Values .....</b>	<b>Inside Back Cover</b>

## **Safety**

Aviation Accidents by Type of Operations .....	3*
Aviation Accident Rates by Type of Operation .....	4*
Airspace Incidents by Incident Type .....	5*
Airspace Incident Rates by Incident Type .....	6*
NTSB U.S. Transportation Fatalities.....	7

## **FAA Air Traffic**

FAA Air Traffic Activity.....	8*
Air Route Traffic Control Center Activity .....	9*
50 Busiest FAA Air Traffic Control Towers .....	10*
50 Busiest Approach Control Facilities .....	12*
Automated Flight Service Station Activity .....	14*

## **Airports**

Number of U.S. Airports .....	16
National Airspace Systems Delays .....	17*

## **Aircraft**

U.S. Air Carrier Activity.....	18
U.S. General Aviation Activity .....	19
Aircraft Certification Service.....	20

## **Airmen**

Active Pilots and Nonpilots.....	21*
----------------------------------	-----

## **Industry Trends**

Scheduled U.S. Air Carrier Traffic & Fin. Trends.....	22*
U.S. Commercial Space Trans. Financial Trends.....	23
Aviation Forecasts.....	24*

<i>FAA Regional Boundaries Map .....</i>	<i>25</i>
--	-----------

FAA Organizational Chart .....	Center Fold*
--------------------------------	--------------

# Table of Contents (cont.)

## Commercial Space Transportation

Associate Administrator for Commercial Space Transportation (AST).....	28
AST Licensing and Industry Activity.....	29
U.S. Commercial Space Launch Schedule.....	30

## FAA Resources

FAA Employment .....	31*
FAA Percent Minority and Women Employment .....	32*
FAA Major Work Force Employment .....	33*
Labor Relations .....	34*
FAA Finances.....	35*
FAA Facilities and Aircraft.....	36

## Organization

FAA Officials–Washington Headquarters .....	37*
FAA Officials–Major Field Organizations .....	40*
FAA Officials–International Offices.....	42*
FAA Goals and Objectives .....	43*

---

For further information call APF-100 (202-267-9946)

---

\*Updated this issue

Distribution: A-WXYZE-3; A-FOF-O(STD)

## Aviation Accidents by Type of Operation

Type of Operation	Year	Jan	Feb	Mar	Apr	May	Jun	Jul	Aug	Sep	Oct	Nov	Dec	Year Total
Large Air Carrier	2001	1	4	4	4	3	1	2	6	7	2	4	2	40
	2002	3	3	6										12
Commuter	2001	1	0	0	1	1	0	1	1	0	2	0	0	7
	2002	1	0	2										3
Air Taxi	2001	7	5	6	6	7	6	8	9	5	6	1	6	72
	2002	4	3	6										13
General Aviation	2001	104	107	121	146	157	192	245	203	119	123	118	86	1,721
	2002	94	88	108										290
Rotorcraft*	2001	11	16	18	9	16	17	24	20	18	11	13	7	180
	2002	13	11	14										38

\* Part 135 and US registered general aviation rotocraft accidents.

Sep 2001 does include the 4 aircraft destroyed in the terrorist attacks of Sep. 11th

Note: Preliminary data and subject to change.

As of: 04/26/02

Source: AAI-200  
(202) 267-3279

## Aviation Accident Rates by Type of Operation

Type of Operation	1997		1998		1999		2000		% Chg 00-99	
	Number	Rate	Number	Rate	Number	Rate	Number	Rate	Number	Rate
Large Air Carriers.....	48	.31	50	.29	52	.29	57	.30	10%	3%
Commuter.....	16	1.6	8	2.3	13	4.8	12	2.18	-8%	-55%
Air Taxi.....	83	3.64	78	3.03	77	2.71	80	3.29	4%	21%
General Aviation.....	1,855	7.28	1,908	7.12	1,908	7.05	1,837	5.96	-4%	-15%

Accident Rates are per 100,000 Flight Hours

Rotocraft rates discontinued, currently under review

Note: Preliminary data and subject to change.

As of: 1/14/01

Source: AAI-200

(202) 267-3279

# Airspace Incidents by Incident Type

Incident Type	Year	Jan	Feb	Mar	Apr	May	Jun	Jul	Aug	Sep	Oct	Nov	Dec	Year Total
Near Midair Collisions	2001	16	17	19	14	29	28	15	20	17	13	11	10	209
	2002	14	9	10										33
Pilot Deviations	2001	117	112	149	144	183	154	146	178	172	230	278	136	1,999
	2002	138	133	131										402
Operational Errors	2001	69	82	111	101	112	108	122	130	87	104	91	66	1,183
	2002	89	67	109										265
Vehicle Pedestrian Deviations	2001	38	38	30	49	37	37	53	41	42	40	33	21	459
	2002	29	30	36										95
Surface Incidents	2001	95	102	103	112	124	124	107	119	99	116	96	59	1,256
	2002	62	63	87										212
Runway Incursions*	2001	24	33	39	35	37	42	37	31	23	39	25	18	383
	2002	14	18	29										61

Note: Preliminary data and subject to change.

N/A: Not available at time of update.

Source: ATX-400

(202) 385-4802

\*ATS

As of: 03/31/02

\*As of: 03/31/02

(202) 385-4788



## Airspace Incident Rates by Incident Type

Incident Type	Percent Change									
	1998		1999		2000		2001		2000 - 2001 (4)	
	Number	Rate	Number	Rate	Number	Rate	Number	Rate	Number	Rate
Operational Errors (1).....	894	.56	992	.60	1,138	.69	1,183	.74	4%	7%
Pilot Deviations (2).....	1,594	1.00	1,629	.99	1,900	1.15	1,999	1.21	5%	5%
Surface Incidents (3).....	832	1.26	1,048	1.53	1,391	2.05	1,256	1.86	-10%	-9%

(1) Per 100,000 Facility Activities

(2) Per 100,000 Flight Hours

(3) Per 1,000,000 Airport Operations

(4) Calculations use fifteen decimal places for rates (rounded two places for display).

Note: 2001 data preliminary and subject to change.

As of: 04/07/02

Source: ATX-400

(202) 385-4802

# National Transportation Safety Board

## 1999-2000 U.S. Transportation Fatalities

	1999	2000 <sup>1</sup>
<b>Highway</b> <sup>1</sup>		
Passenger cars.....	20,862	20,455
Light Trucks and Vans.....	11,265	11,439
Pedestrians.....	4,939	4,727
Motorcycles.....	2,483	2,680
Pedalcycles.....	754	738
Medium and heavy trucks.....	759	746
Buses.....	59	31
All Other.....	596	984
<b>Total.....</b>	<b>41,717</b>	<b>41,800</b>
<b>Grade Crossings</b> <sup>2</sup>	<b>(402)</b>	<b>(425)</b>
<b>Rail</b>		
Intercity <sup>3</sup>		
Trespassers and nontrespassers..... <sup>4</sup>	530	544
Employees and contractors.....	43	28
Passengers on trains.....	14	4
Transit <sup>5</sup>		
Light, heavy, and commuter rail.....	196	194
<b>Total.....</b>	<b>783</b>	<b>770</b>
<b>Marine</b>		
Recreational Boating.....	734	701
Cargo Transport.....	47	36
Commercial fishing..... <sup>6</sup>	57	41
Commercial Passengers.....	36	23
<b>Total.....</b>	<b>874</b>	<b>801</b>
<b>Aviation</b>		
General Aviation.....	630	592
Airlines.....	12	92
Air Taxi.....	38	71
Commuter.....	12	5
Foreign/Unregistered..... <sup>7</sup>	1	17
<b>Total.....</b>	<b>693</b>	<b>777</b>
<b>Pipeline</b>		
Gas.....	22	37
Liquids.....	4	1
<b>Total.....</b>	<b>26</b>	<b>38</b>
<b>GRAND TOTAL.....</b>	<b>44,093</b>	<b>44,186</b>

1 2000 figures are preliminary estimates. Aviation data come from the NTSB; all other data from DOT.

2 Grade crossing fatalities are not counted as a separate category for determining the grand totals because they are included in the highway and rail categories, as appropriate.

3 Data reported to Federal Rail Administration (FRA).

4 Does not include motor vehicle occupants killed at grade crossings.

5 Data reported to the FTA. Fatalities for commuter rail operations may also be reported to the FRA and may be included in the intercity railroad fatalities.

6 Refers to only operational fatalities.

7 Includes non-U.S. registered aircraft involved in accidents in the U.S.

# Air Traffic

## FAA Air Traffic Activity (In Thousands)

<b>Aircraft Handled by</b>	<b>Jan-Feb</b>	<b>Jan-Feb</b>	<b>Jan-Dec</b>
<b>FAA ARTCC's</b>	<b>2002*</b>	<b>2,001</b>	<b>2001</b>
Air Carrier.....	3,599	4,054	24,017
Air Taxi.....	1,414	1,356	8,408
General Aviation.....	1,244	1,250	8,005
Military.....	627	641	3,984
<b>TOTAL....</b>	<b>6,884</b>	<b>7,301</b>	<b>44,414</b>
<b>Airport Operations</b>			
<b>Logged by FAA Towers</b>			
Air Carrier.....	2,045	2,372	13,960
Air Taxi.....	1,479	1,485	9,262
General Aviation.....	3,631	3,636	24,424
Military.....	325	328	2,020
<b>TOTAL....</b>	<b>7,480</b>	<b>7,821</b>	<b>49,666</b>
<b>Instrument Operations</b>			
<b>Logged by FAA Towers</b>			
Air Carrier.....	2,181	2,567	15,198
Air Taxi.....	1,789	1,827	11,335
General Aviation.....	2,775	2,782	19,342
Military.....	565	545	3,534
<b>TOTAL....</b>	<b>7,310</b>	<b>7,721</b>	<b>49,409</b>
<b>Flight Services</b>			
<b>Logged by: **</b>			
Flight Service Stations.....	151	177	902
Automated Flight Service Stations.....	6,365	6,316	29,028
<b>TOTAL....</b>	<b>6,516</b>	<b>6,493</b>	<b>29,930</b>

\*Preliminary

As of: 04/26/02

Source: APO-130

(202) 267-3350

\*\*Source: ATX-400

(202) 385-4734

# Air Route Traffic Control Center Activity

CY 2001 Rank	Center	Aircraft Handled (000's)		
		Jan-Feb 2002*	Jan-Feb 2001	Jan-Dec 2001
1	Cleveland, OH.....	466	497	3,066
2	Atlanta, GA.....	461	476	2,910
3	Chicago, IL.....	425	442	2,820
4	New York, NY.....	425	465	2,807
5	Washington, DC.....	400	444	2,684
6	Indianapolis, IN.....	408	420	2,581
7	Miami, FL.....	389	400	2,191
8	Memphis, TN.....	339	349	2,179
9	Kansas City, KS.....	330	338	2,146
10	Jacksonville, FL.....	366	392	2,140
11	Fort Worth, TX.....	328	348	2,138
12	Los Angeles, CA.....	317	354	2,097
13	Minneapolis, MN.....	305	321	2,052
14	Houston, TX.....	322	343	2,022
15	Boston, MA.....	261	290	1,864
16	Albuquerque, NM.....	286	302	1,780
17	Denver, CO.....	266	279	1,682
18	Oakland, CA.....	251	270	1,648
19	Salt Lake City, UT.....	238	244	1,526
20	Seattle, WA.....	195	224	1,363
21	Anchorage, AK.....	85	83	589
22	Guam ** .....	19	20	128

\*Preliminary

\*\*Center Radar Approach Control (CERAP)

Source: APO-130  
(202) 267-3350

As of: 04/12/02

# 50 Busiest FAA Airport Traffic Control Towers

CY 2001 Rank	Tower and State	Airport Operations (000's)		
		Jan-Feb 2002*	Jan-Feb 2001	Jan-Dec 2001
1	Chicago/O'Hare Int'l., IL.....	139	178	912
2	Atlanta International, GA.....	140	145	887
3	Dallas/Ft. Worth Int'l., TX.....	120	137	803
4	Los Angeles Int'l, CA.....	99	128	739
5	Phoenix Sky Harbor Int'l, AZ.....	92	104	607
6	Detroit Metro Wayne Co., MI.....	77	87	523
7	Denver International, CO.....	76	84	508
8	Minneapolis-St. Paul Int'l, MN.....	76	80	501
9	Las Vegas/McCarran Int'l, NV.....	76	80	499
10	Lambert-St. Louis Int'l, MO.....	72	78	479
11	Houston/G Bush Intercont'l, TX.....	73	80	477
12	Boston/Logan Int'l, MA.....	62	76	472
13	Charlotte/Douglas Int'l, NC.....	76	77	471
14	Miami International, FL.....	74	88	470
15	Philadelphia Int'l, PA.....	73	77	467
16	Van Nuys, CA.....	80	63	457
17	Pittsburgh International, PA.....	71	72	451
18	Newark International, NJ.....	65	74	445
19	Washington Dulles Int'l, VA.....	63	68	424
20	Seattle Tacoma Int'l, WA.....	55	67	401
21	Orlando/Sanford, FL.....	62	70	398
22	Metropolitan Oakland Int'l.....	62	65	396
23	Memphis International, TN.....	63	63	394
24	San Francisco Int'l, CA.....	54	65	388
25	Covington/Cincinnati Int'l, KY.....	75	75	386

\*Preliminary

As of: 04/12/02

# 50 Busiest FAA Airport Traffic Control Towers

CY 2001 Rank	Tower and State	Airport Operations (000's)		
		Jan-Feb 2002*	Jan-Feb 2001	Jan-Dec 2001
26	Santa Ana/John Wayne, CA.....	59	57	385
27	Denver/Centennial.....	70	48	384
28	La Guardia, NY.....	56	67	377
29	Daytona Beach Int'l, FL.....	61	60	374
30	Salt Lake City Int'l, UT.....	63	56	370
31	Long Beach/Daugherty, CA.....	52	51	359
32	Phoenix-Deer Valley, AZ.....	53	69	340
33	Honolulu International, HI.....	50	56	327
34	Orlando International, FL.....	49	60	326
35	Prescott/E. A. Love Field, AZ.....	65	48	325
36	Baltimore/Wash. Int'l, MD.....	49	52	324
37	John F. Kennedy Int'l, NY.....	44	51	318
38	Anchorage International, AK.....	33	34	300
39	Portland International, OR.....	42	49	394
40	Cleveland Hopkins Int'l, OH.....	42	50	292
41	Seattle/Boeing Field, WA.....	36	46	291
42	Fort Lauderdale/Hollywood, FL.....	47	53	290
43	Pontiac/Oakland Co. Int'l, MI.....	39	41	283
44	Tulsa/Riverside, OK.....	50	32	281
45	Chicago Midway, IL.....	44	44	277
46	Raleigh/Durham Int'l, NC.....	38	48	274
47	Fresno Yosemite Int'l, CA.....	23	41	274
48	San Jose International, CA.....	38	44	272
49	Washington National, DC.....	26	54	270
50	Grand Forks International, FL.....	48	46	270

# 50 Busiest Radar Approach Control Facilities

CY 2001 Rank	Facilities/State	Instrument Ops (000s)		
		Jan-Feb 2002*	Jan-Feb 2001	Jan-Dec 2001
1	Southern Calif. TRACON, CA.....	333	368	2,274
2	New York TRACON, NY.....	293	312	2,019
3	Chicago TRACON, IL.....	108	216	1,382
4	Dallas/Ft Worth, TRACON, TX.....	202	214	1,318
5	Bay TRACON, CA.....	161	162	1,041
6	Miami International, FL.....	156	174	940
7	Atlanta TRACON, GA.....	178	1	859
8	Houston TRACON, TX.....	131	137	832
9	Phoenix TRACON, AZ.....	124	126	747
10	Denver TRACON, CO.....	109	113	705
11	Detroit TRACON, MI.....	102	111	699
12	Washington Dulles Int'l, VA.....	99	111	686
13	Philadelphia International, PA.....	111	103	664
14	Minneapolis TRACON, MN.....	93	102	660
15	San Juan CERAP, PR.....	107	120	638
16	St Louis TRACON, MO.....	98	99	635
17	Las Vegas TRACON, NV.....	93	99	631
18	Orlando International, FL.....	104	108	625
19	Boston TRACON, MA.....	82	92	617
20	Daytona Beach Int'l, FL.....	102	99	612
21	Charlotte/Douglas Int'l, NC.....	95	96	597
22	Seattle/Tacoma TRACON, WA.....	81	94	588
23	Washington National, DC.....	83	103	586
24	Tampa International, FL.....	95	103	578
25	Salt Lake City TRACON, UT.....	84	82	564

\* Preliminary    <sup>1</sup>Missing 2001 data

Source: APO-130  
(202) 267-3350

As of: 04/12/02

# 50 Busiest Radar Approach Control Facilities

CY 2001 Rank	Facilities/State	Instrument Ops (000's)		
		Jan-Feb 2002*	Jan-Feb 2001	Jan-Dec 2001
26	Pittsburgh International, PA.....	84	84	548
27	Baltimore-Washington Int'l, MD.....	76	85	539
28	Covington/Cincinnati Int'l, KY.....	93	93	513
29	Memphis International, TN.....	75	75	480
30	Jacksonville Int'l, FL.....	75	86	474
31	Sacramento TRACON, CA.....	67	64	461
32	San Antonio Int'l, TX.....	72	67	433
33	Pensacola TRACON, FL.....	73	65	424
34	Port Columbus Int'l, OH.....	60	58	391
35	Palm Beach International, FL.....	68	81	388
36	Cleveland Hopkins Int'l, OH.....	55	62	385
37	Yankee TRACON, CT.....	55	53	376
38	Corpus Christi, TX.....	56	51	372
39	Portland TRACON, OR.....	50	57	356
40	Raleigh-Durham Int'l, NC.....	50	60	355
41	Dayton International, OH.....	51	55	354
42	Indianapolis Int'l, IN.....	45	51	340
43	Milwaukee/Gen Mitchell Intl, WI....	49	48	335
44	Austin, TX.....	52	51	326
45	Kansas City International, MO.....	48	50	322
46	Anchorage TRACON, AK.....	39	40	320
47	Norfolk International, VA.....	48	46	312
48	Oklahoma City/Will Rogers, OK	53	43	306
49	Albuquerque International, NM.....	51	47	304
50	Nashville International, TN.....	46	47	303



# Automated Flight Service Stations Activity

CY 2001 Rank	AFSS/State	Flight Services (000's)		
		Jan-Mar 2002*	Jan-Mar 2001	Jan-Dec 2001*
1	Miami AIFSS, FL.....	313	353	1,266
2	St. Petersburg, FL.....	332	312	1,203
3	Fort Worth, TX.....	191	187	839
4	Lansing, MI.....	151	161	818
5	Macon, GA.....	188	149	762
6	Seattle, WA.....	117	140	741
7	Prescott, AZ.....	180	183	739
8	Bridgeport, CT.....	114	118	738
9	Denver, CO.....	171	153	697
10	Raleigh, NC.....	144	143	682
11	Kankakee, IL.....	136	128	673
12	Princeton, MN.....	122	130	659
13	Leesburg, VA.....	136	131	648
14	San Angelo, TX.....	152	159	624
15	Green Bay, WI.....	101	112	582
16	San Juan AIFSS, PR.....	136	125	574
17	Williamsport, PA.....	102	108	562
18	Millville, NJ.....	118	107	562
19	Conroe, TX.....	124	124	528
20	Anniston, AL.....	124	122	526
21	Terre Haute, IN.....	109	110	526
22	Columbia, MO.....	106	110	516
23	Mc Alester, OK.....	116	109	493
24	Gainesville, FL.....	148	100	491
25	Oakland AIFSS, CA.....	133	117	484
26	Anderson, SC.....	100	130	474
27	Kenai AIFSS, AK.....	86	91	465
28	Albuquerque, NM.....	103	111	441
29	St. Louis, MO.....	93	93	435
30	Cleveland, OH.....	83	88	433

\* Preliminary

Source: ATX-400  
(202) 385-4734

Automated International Flight Service Station--AIFSS

As of: 04/25/02

# Automated Flight Service Stations Activity

CY 2001 Rank	AFSS/State	Flight Services (000's)		
		Jan-Mar 2002*	Jan-Mar 2001	Jan-Dec 2001*
31	Altoona, PA.....	85	90	432
32	Hawthorne, CA.....	120	76	417
33	Reno, NV.....	92	100	415
34	Rancho Murieta, CA.....	80	90	411
35	Jonesboro, AR.....	91	93	405
36	Riverside, CA.....	99	106	405
37	Wichita, KS.....	81	91	387
38	Nashville, TN.....	84	81	386
39	Dayton, OH.....	77	81	383
40	San Diego, CA.....	90	83	381
41	Mc Minnville, OR.....	79	79	380
42	Grand Forks, ND.....	94	85	355
43	Bangor, ME.....	70	58	347
44	Cedar City, UT.....	77	80	342
45	De Ridder, LA.....	85	86	338
46	Burlington, VT.....	68	60	333
47	Islip AIFSS, NY.....	68	55	327
48	Fort Dodge, IA.....	61	62	309
49	Louisville, KY.....	61	65	297
50	Buffalo, NY.....	54	55	285
51	Elkins, WV.....	56	51	277
52	Honolulu, HI.....	57	60	263
53	Great Falls, MT.....	47	51	252
54	Greenwood, MS.....	60	57	251
55	Columbus, NE.....	49	53	244
56	Huron, SD.....	45	49	241
57	Jackson, TN.....	45	52	227
58	Fairbanks, AK.....	38	45	213
59	Boise, ID.....	36	41	204
60	Casper, WY.....	41	47	200
61	Juneau, AK.....	21	22	138

# Airports

## Number of U.S. Airports <sup>1</sup> (As of December 31)

	2000	1999	1998
<b>Total Airports</b> .....	19,281	19,098	18,770
Public Use Airports.....	5,317	5,324	5,352
# with Paved Runways.....	3,953	3,949	3,970
# with Unpaved Runways.....	1,364	1,375	1,382
# with Lighted Runways.....	4,035	4,051	4,005
# with Unlighted Runways.....	1,282	1,273	1,347
Private Use Airports.....	13,964	13,774	13,418
# with Paved Runways.....	4,463	4,384	4,451
# with Unpaved Runways.....	9,501	9,390	8,967
# with Lighted Runways.....	1,010	918	840
# with Unlighted Runways.....	12,954	12,856	12,578
<b>Public use airports abandoned</b> .....	13	17	24
<b>Private use airports abandoned</b> .....	156	109	92
<b>Certificated Airports*</b> .....	651	655	660
Civil .....	563	565	566
Military .....	88	90	94

<sup>1</sup> Includes civil and joint-use civil-military airports, heliports, STOLports, and seaplane bases in the U.S. and its territories.

<sup>2</sup> Preliminary

\* Certificated airports serve Air Carrier Operations with aircraft seating more than 30 passengers. (FAR Part 139).

Source: AAS-330

(202) 267-8752

As of: 12/31/00

# National Airspace Total System Delays

Year	Jan	Feb	Mar	Apr	May	Jun	Jul	Aug	Sep	Oct	Nov	Dec	YTD Total
<b>2002*</b>	14,158	13,821	20,020										47,999
<b>2001</b>	27,894	31,599	30,040	30,260	36,460	41,607	40,037	49,423	18,628	13,365	13,249	15,541	348,103
<b>2000</b>	26,015	27,208	32,205	35,332	36,570	50,114	44,430	47,893	43,357	43,794	34,365	29,006	450,289 r/
<b>1999</b>	24,345	19,851	23,180	34,046	39,533	41,602	45,162	37,189	32,833	28,223	23,330	24,822	374,116 r/
<b>1998</b>	27,623	24,855	24,159	22,563	29,187	37,093	25,672	30,549	20,194	23,988	20,439	19,912	306,234 r/

Delays of 15 minutes or longer

r/ Revised

\* Preliminary information that is subject to change

As of: 03/31/02

Source: ATT-220  
(703) 904-4470

# Aircraft

## U.S. Air Carrier Activity

	CY 1999	CY 1998	CY 1997
<b>Total Number of Aircraft<sup>1</sup>.....</b>	19,145	18,754	17,990
<b>Type of Carrier</b>			
<b>Domestic, flag, supplemental,     scheduled, cargo air carriers,     and commercial     operators.....</b>	7,094	6,959	6,681
<b>Commuter Air Carriers and Air     Taxis.....</b>	12,051	11,795	11,309
<b>Total Number of Aircraft<sup>1</sup>.....</b>	19,145	18,754	17,990
<b>Type of Aircraft</b>			
<b>Jet.....</b>	7,270	6,865	6,464
<b>Turboprop.....</b>	3,740	3,535	3,207
<b>Piston.....</b>	5,757	6,065	6,167
<b>Rotary Wing.....</b>	2,378	2,289	2,152
<b>Air Carrier Traffic Statistics<sup>2</sup> (Millions)*</b>			
<b>Passenger miles flown.....</b>	668,169	635,517	605,434
<b>Passenger enplanements.....</b>	635	613	599
<b>Ton miles.....</b>	86,800	82,304	81,057
<b>Aircraft miles flown.....</b>	6,161	5,838	5,679
<b>Passenger load factor<sup>3</sup></b>			
<b>Domestic.....</b>	68.9%	70.0%	69.1%
<b>International.....</b>	74.4%	72.8%	74.1%

<sup>1</sup> Source: Vital Information System

<sup>2</sup> Includes domestic and international scheduled service, of Certificated Route Air Carriers only.

<sup>3</sup> Proportion of aircraft seating capacity that is sold.

As of: 12/31/99

Source: AFS-40  
(202) 267-3433  
\*BTS (K-25)  
(202) 366-8513

# U.S. General Aviation and Air Taxi Activity

## (Calendar Years)

	Estimated Active Aircraft (thousands)		Estimated Hours Flown (Millions)	
	2000	1999	2000	1999
<b>Total .....</b>	217.5	219.4	31.0	31.8
<b>By Type Aircraft</b>				
Piston.....	170.5	171.9	22.2	22.9
Turboprop.....	5.8	5.7	2.0	1.8
Jet.....	7.0	7.1	2.8	2.7
Rotary Wing.....	7.2	7.4	2.3	2.7
Other.....	6.7	6.8	0.4	0.3
Experimental.....	20.4	20.5	1.3	1.2
<b>By Type Flying</b>				
Public Use.....	N/A	4.1	N/A	1.1
Corporate.....	11.0	10.8	3.8	3.6
Business.....	25.2	24.5	3.6	3.6
Personal.....	148.2	147.1	11.7	11.3
Instructional.....	14.9	16.1	5.4	5.9
Aerial Application.....	4.3	4.6	1.4	1.5
Aerial Observation.....	5.1	3.2	1.6	1.2
External Load.....	0.2	0.2	0.2	0.1
Other Work.....	1.8	2.4	0.5	0.8
Sight Seeing.....	0.9	0.8	0.2	0.2
Air Tours.....	0.3	0.3	0.2	0.1
Air Taxi.....	3.7	4.3	1.7	1.9
Other.....	1.0	N/A	0.2	N/A
<u>Air Medical Services...</u>	0.9	0.8	0.4	0.5

N/A = Not Applicable

# Aircraft Certification Service

## Aircraft Certification Mission and Program Profiles

	FY 2001	FY 2000r
Type Certificates/Supplemental Type Certificates Issued.....	917	845
Other Design Approvals Issued.....	5,900	5,294
Production Approvals (Including Amendments) Issued.....	2,729	2,639
Airworthiness Certificates Issued.....	619	1,072
New Airworthiness Directives (AD) Issued.....	529	509
New Designees (Representative of the Administrator) Appointed.....	870	975
Total Active Designees.....	4,750	4,847

r revised

As of: 9/30/01

Source: AIR-503  
(202) 267-7260

## Active Pilots and Nonpilots (As of 31 December)

	2001		2000	
	Total	Women	Total	Women
<b>Pilot-Total</b> .....	<b>612,274</b>	<b>35,776</b>	<b>625,581</b>	<b>36,757</b>
Student.....	86,731	10,230	93,064	10,809
Private.....	243,823	13,894	251,561	14,554
Commercial.....	120,502	5,932	121,858	5,807
Airline Transport.....	144,702	4,630	141,596	4,411
Other <sup>1</sup> .....	16,516	1,090	17,502	1,176
<b>Nonpilot-Total</b> <sup>2</sup> .....	<b>513,100</b>	<b>17,114</b>	<b>547,453</b>	<b>16,552</b>
Mechanic.....	310,850	5,295	344,434	5,047
Repairmen.....	40,085	1,789	38,208	1,704
Ground Instructor.....	72,261	5,169	72,326	5,154
Flight Engineer.....	65,398	2,124	65,098	2,076
Other <sup>3</sup> .....	24,506	2,737	27,387	2,571
<b>Flight Instructor</b> .....	<b>82,875</b>	<b>5,386</b>	<b>80,931</b>	<b>5,193</b>

<sup>1</sup> Includes helicopter (only) & glider (only), and recreational pilot certificates.

<sup>2</sup> Excludes non-pilots 70 years old or over in all certificate types except flight engineers and flight navigators.

<sup>3</sup> Includes flight navigators, parachute riggers, and dispatchers.

As of 12/31/01

**Source: APO-110  
(202) 267-3352**



# Industry Trends

## Scheduled U.S. Air Carrier Traffic and Financial Trends

	1st Qtr FY 2002	1st Qtr FY 2001	Numerical Change	Percent Change
<b>TRAFFIC</b>				
<b>ASM'S (in millions)</b>				
Majors.....	189,960	223,271	(33,310)	(14.9)
Nationals.....	15,465	16,183	(718)	(4.4)
Regionals.....	274	224	50	22.3
<b>Totals.....</b>	<b>205,699</b>	<b>239,677</b>	<b>14,331</b>	<b>(14.2)</b>
<b>RPM's (in millions)</b>				
Majors.....	125,472	156,734	(31,262)	(19.9)
Nationals.....	10,015	10,654	(639)	(6.0)
Regionals.....	130	101	29	28.7
<b>Totals.....</b>	<b>135,618</b>	<b>167,489</b>	<b>(31,872)</b>	<b>(19.0)</b>
<b>Load Factor (in percent)</b>				
Majors.....	66.1	70.2	(4.1)	
Nationals.....	64.8	65.8	(1.1)	
Regionals.....	47.6	45.2	2.5	
<b>Totals.....</b>	<b>65.9</b>	<b>69.9</b>	<b>(4.0)</b>	
<b>FINANCIAL</b>				
<b>Revenues (in millions)</b>				
Majors.....	\$21,163	\$29,128	(\$7,965)	(27.3)
Nationals.....	1,923	3,199	(1,277)	(39.9)
Regionals.....	181	228	(47)	(20.7)
<b>Totals.....</b>	<b>\$23,266</b>	<b>\$32,556</b>	<b>(\$9,289)</b>	<b>(28.5)</b>
<b>Expenses (in millions)</b>				
Majors.....	\$25,494	\$28,853	(\$3,360)	(11.6)
Nationals.....	2,234	3,129	(896)	(28.6)
Regionals.....	201	220	(19)	(8.6)
<b>Totals.....</b>	<b>\$27,929</b>	<b>\$32,203</b>	<b>(\$4,274)</b>	<b>(13.3)</b>
<b>Operating Profit/Loss (in millions)</b>				
Majors.....	(\$4,331)	\$275	(\$4,605)	
Nationals.....	(311)	70	(381)	
Regionals.....	(21)	8	(28)	
<b>Totals.....</b>	<b>(\$4,663)</b>	<b>\$352</b>	<b>(\$5,015)</b>	

As of: 4/18/02

Source: APO-110  
(202) 493-4236

## U.S. Commercial Space Transportation Financial Trends

---

	CY 99	CY 00	CY 01 (Projected)
<b>Commercial Launch Revenues (in Millions)</b>	\$851	\$625	\$600

---

As of: 1/19/01

Source: AST-200  
(202) 267-8308

# Aviation Forecasts

Actual    Forecast  
FY 2001    FY 2005

---

## FAA FACILITY WORKLOAD

### Aircraft Handled by FAA ARTCC's (Millions)

Air Carrier.....	24.9	25.2
Air Taxi/Commuter.....	8.3	9.7
General Aviation.....	8.0	8.6
Military.....	4.0	4.1

### Operations Logged by FAA Towers (Millions)

Airport.....	66.2	71.5
Instrument.....	50.9	53.3

### Flight Services Logged by Flight Services Stations (Millions)

	29.0	30.7
--	------	------

---

## CIVIL AVIATION ACTIVITY

### Certificated Route Air Carrier

Revenue Passenger Enplanements (Millions)*.....	649.6	701.0
Revenue Passenger Miles (Billions)*.....	682.2	752.4

### Air Carrier Aircraft.....

	5,840	6,771
--	-------	-------

### General Aviation Estimated

Hours Flown (Millions)**.....	29.0	29.3
Active Aircraft (Thousands)**.....	216.2	215.7

---

## ESTIMATED FUEL CONSUMED BY U.S. DOMESTIC CIVIL AVIATION (Millions of Gallons)

### Jet Fuel

Air Carrier.....	19,864	20,692
General Aviation.....	986	1,174

### Aviation Gas

Air Carrier.....	2	2
General Aviation.....	313	326

---

<b>Active Pilots (Thousands)**</b> .....	649,957	661,975
--	---------	---------

---

\*\* Calendar Year

Source: APO-110  
(202) 493-4236

As of: 3/18/02

# Aviation Forecasts

Actual Forecast  
FY 1999 FY 2003

---

## FAA FACILITY WORKLOAD

<b>Aircraft Handled by FAA ARTCC's (Millions)</b>	<b>44.7</b>	<b>49.0</b>
Air Carrier.....	24.0	26.9
Air Taxi/Commuter.....	7.7	8.5
General Aviation.....	8.8	9.6
Military.....	4.1	4.1
<b>Operations Logged by FAA Towers (Millions)</b>		
Airport.....	68.2	73.9
Instrument.....	51.8	56.5
<b>Flight Services Logged by Flight Services Stations (Millions)</b>	32.4	32.2

---

## CIVIL AVIATION ACTIVITY

<b>Certificated Route Air Carrier</b>		
Revenue Passenger Enplanements (Millions)....	629.4	713.3
Revenue Passenger Miles (Billions).....	642.8	756.8
<b>Air Carrier Aircraft.....</b>	5,668	6,856
<b>General Aviation Estimated</b>		
Hours Flown (Millions)*.....	29.8	32.7
Active Aircraft (Thousands)*.....	206.5	215.1

---

## ESTIMATED FUEL CONSUMED BY U.S. DOMESTIC CIVIL AVIATION (Millions of Gallons)

<b>Jet Fuel</b>		
Air Carrier.....	19,429	22,287
General Aviation.....	888	1,191
<b>Aviation Gas</b>		
Air Carrier.....	2	2
General Aviation.....	313	331
<b>Active Pilots (Thousands)*.....</b>	640.1	702.8

---

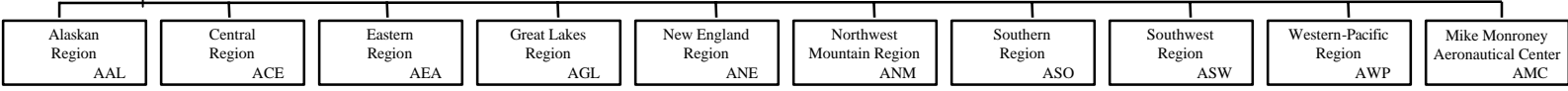
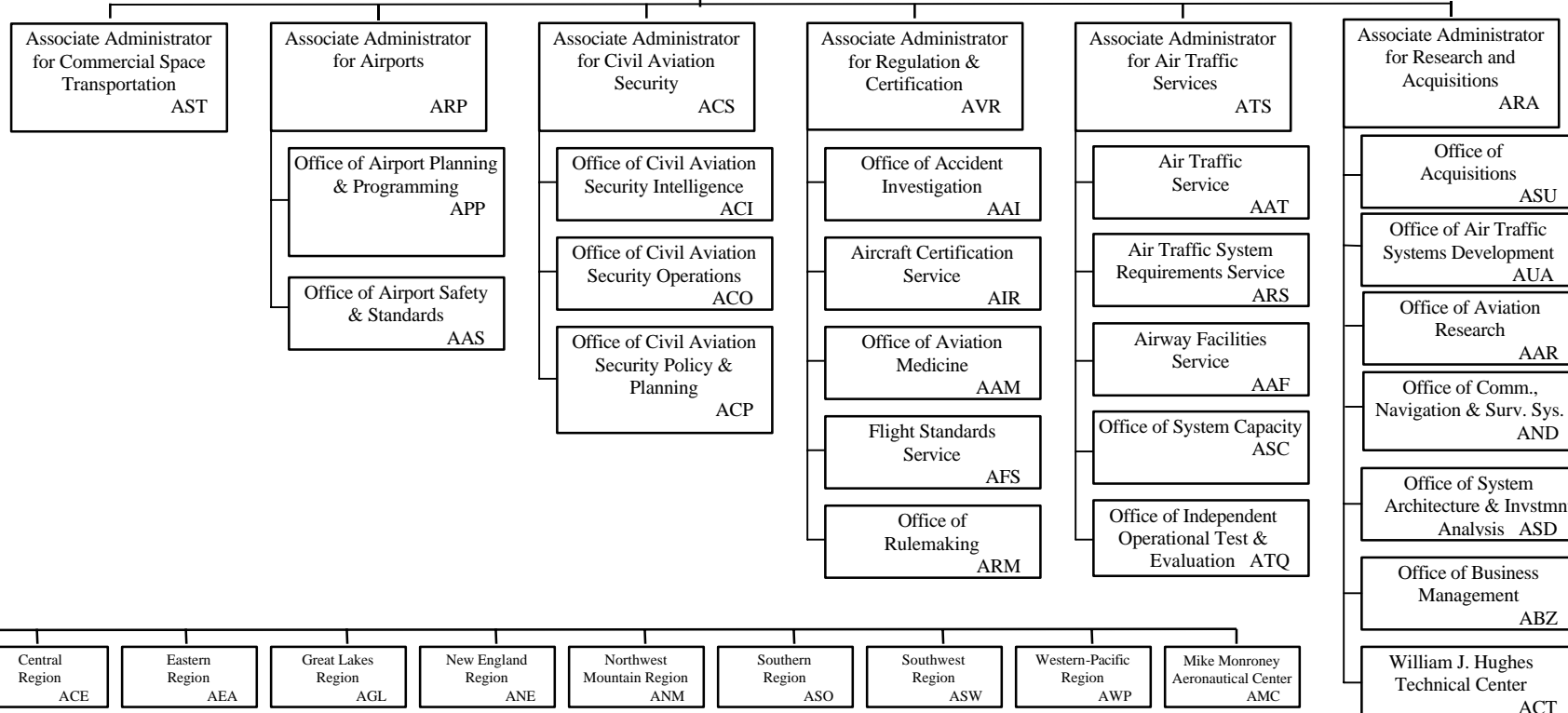
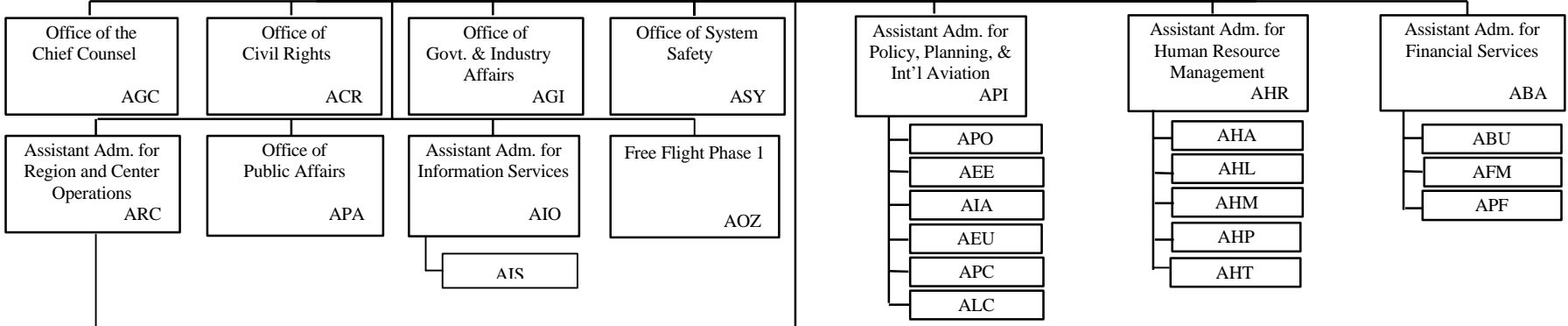
\*Calendar Year  
As of: 3/2000

Source: APO-110  
(202) 493-4236

# FEDERAL AVIATION ADMINISTRATION

Administrator  
AOA

Deputy  
Administrator  
ADA



# **The Associate Administrator for Commercial Space Transportation**

Since its establishment in 1984, the primary responsibilities of the Associate Administrator for Commercial Space Transportation (AST) have been to regulate the U.S. commercial space transportation industry and license commercial launches to protect public health and safety, safety of property, national security, and foreign policy interests of the U.S.. The Office is also responsible for encouraging, facilitating and promoting commercial launches by the private sector and for regulating non-federal or commercial space launch sites.

Licenses to conduct commercial launches are granted to commercial launch providers who demonstrate evidence of compliance with all safety regulations and other requirements for conducting commercial space launch activities. Licensees must also have sufficient insurance or financial resources to cover any probable losses from a launch mishap.

Licensed commercial launches are currently conducted at federal launch sites including Cape Canaveral Air Station, Florida; Vandenberg Air Force Base, California; Wallops Flight Facility, Wallops Island, Virginia; and White Sands Missile Range, New Mexico. Four non-federal or commercial sites are now licensed and operational to allow licensed commercial launches and other launch operations. They are the California Spaceport, located at Vandenberg Air Force Base; Florida Space Authority, located at Cape Canaveral; the Virginia Space Flight Center, located on Wallops Island, Virginia; and the Kodiak Launch Complex, located on Kodiak Island, Alaska. Several other states are developing spaceports including New Mexico, Texas, and Oklahoma.

## **AST Programs and Initiatives**

### Regulatory and Safety Program

- Licensing, Rulemaking, Insurance Determinations/Risk Assessment, Environmental Compliance, Standards, Compliance Monitoring, Enforcement, Safety Research, Reentry Spacecraft and Operations.

### Other Programs and Initiatives

- Launch Technology Development, Customer Service, Industry and Market Analysis, Federal Space Policy Development, International Launch Trade Policy, Community and Educational Outreach

### Research Areas

- Flight Safety, Launch Sites, Payload Safety, Standards, GPS, Environmental Issues, Space Safety including Orbital Debris.

**World Wide Web Address:**

**<http://AST.faa.gov/>**

# U.S. Commercial Space Transportation Activity and AST Licensing

	FY 1999	FY 2000	FY 2001 (Proj.)
<b>Licensed Commercial Launches</b>			
<b>TOTAL</b>	<b>18</b>	<b>12</b>	<b>16</b>
<b>Number of Orbital Launches</b>	18	12	15
<b>Number of Sub-Orbital Launches</b>	0	0	1
<b>By Launch Vehicle Type</b>			
Delta Family (Boeing Company)	7	2	3
Atlas Family (Lockheed Martin)	5	4	3
Pegasus (Orbital Sciences Corp.)	2	2	2
Athena 1&2 (Lockheed Martin)	3	0	1
Taurus (Orbital Sciences Corp.)	0	1	1
Zenit (KB Yuzhnoye, Ukraine)	1	3	3
Other	1	0	3
<b>By Payload Type</b>			
GEO <sup>1</sup> Communications Satellites	8	8	9
LEO <sup>2</sup> Communications Satellites	5	2	0
Scientific Satellites	3	1	1
Remote Sensing Satellites	3	0	3
Microgravity or Sub-orbital Payloads	0	0	1
Mass Simulator / Testing	1	1	2
<b>By Launch Site (Federal)</b>			
Cape Canaveral Air Station, FL	13	6	6
Vandenberg AFB, CA	4	1	3
Wallops Flight Facility, VA	0	1	0
White Sands Missile Range, NM	0	0	0
Kwajalein Missile Range	1	0	1
<b>By Launch Site (Non-Federal)</b>			
California Spaceport	0	0	0
Spaceport Florida Authority	0	0	0
Virginia Space Flight Center	0	0	0
Pacific Ocean Platform	1	3	3
Kodiak Launch Complex, AK	0	0	1
International Site	0	0	2
<b>Number of Licenses</b>			
New	3	6	8
Renewal	4	1	4
Amendments	18	5	3

<sup>1</sup> GEO: Geosynchronous Earth orbit-approx. 22,300 miles above the equator.

<sup>2</sup> LEO: Low Earth Orbit- from 100-1000 nautical miles.

## United States Commercial Space Launch Schedule, CY 2002

(launch dates are subject to change)

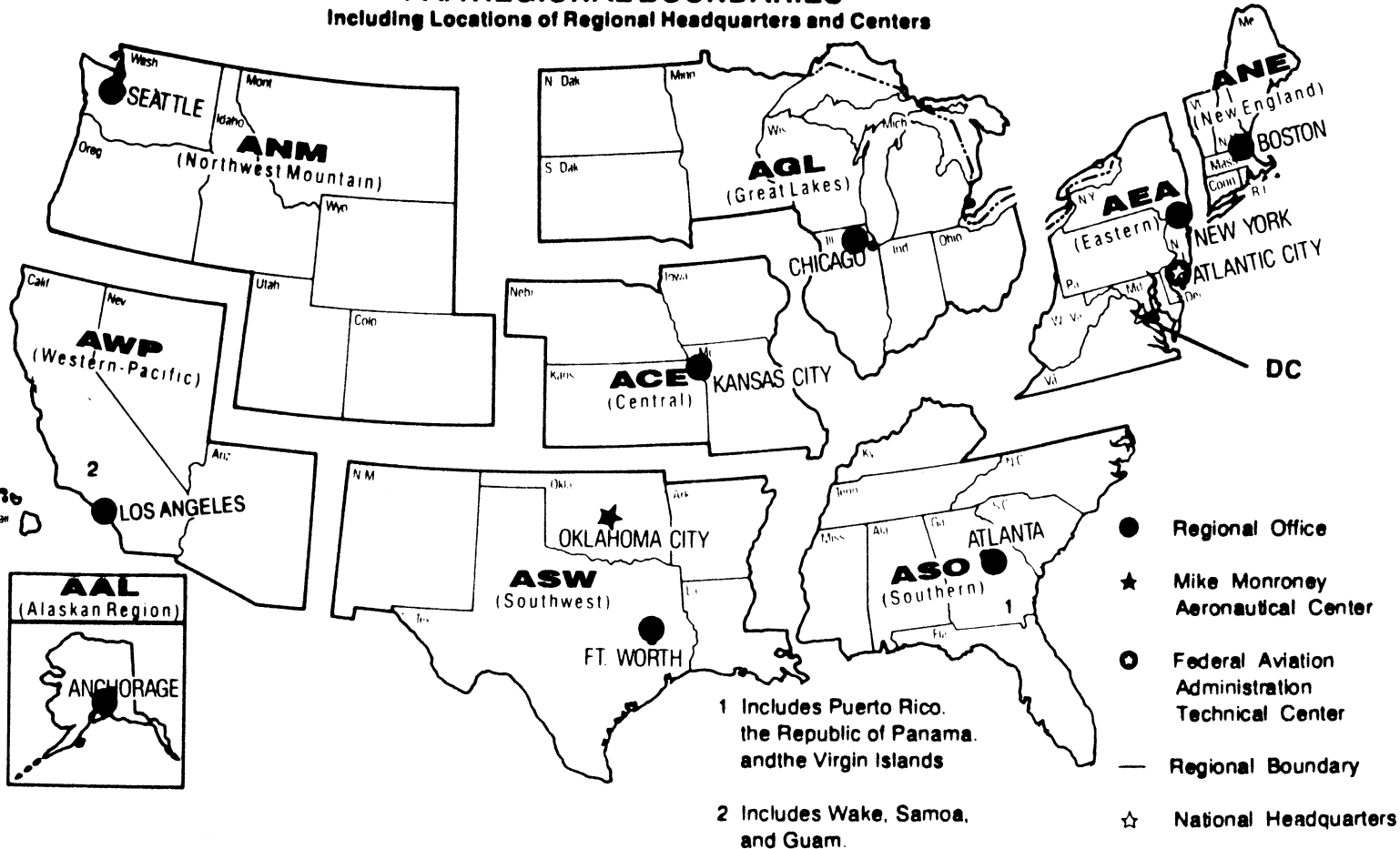
<b>Payload (Operator)/ Description</b>	<b>Launch Company/ Vehicle</b>	<b>Launch Date/ Launch Site</b>
<i>Iridium IS-1 (U.S.)</i> Comm. Satellite	The Boeing Company Delta II	February 2002 Vandenberg AFB, CA
<i>Echostar VII (U.S.)</i> Comm. Satellite	Lockheed Martin (International Launch Services, ILS) Atlas IIIB	February 2002 Cape Canaveral Air Force Station, FL
<i>HyShot 2 (Australia)</i> Hypersonic test [suborbital]	Astrotech Space Terrier-Orion	April 2002 Woomera, Australia
<i>Galaxy III C (U.S.)</i> Comm. Satellite	Sea Launch Zenit 3SL	May 2002 Pacific Ocean Platform
<i>Hotbird 6 (Europe)</i> Comm. Satellite	Lockheed Martin (ILS) Atlas V [first launch]	May 2002 Cape Canaveral Air Force Station, FL
<i>Asiasat 4 (U.S.)</i> Comm. Satellite	Lockheed Martin (ILS) Atlas IIIB	May 2002 Cape Canaveral Air Force Station, FL
<i>Unannounced (Europe)</i> Comm. Satellite	The Boeing Company Delta IV [first launch]	July 2002 Cape Canaveral Air Force Station, FL
<i>Unannounced</i>	Sea Launch Zenit 3SL	2002 Pacific Ocean Platform
<i>Hispasat 1-D (Spain)</i> Comm. Satellite	Lockheed Martin (ILS) Atlas IIAS	August 2002 Cape Canaveral Air Force Station, FL
<i>Orbview 3 (U.S.)</i> Remote Sensing	Orbital Sciences Corp. Pegasus XL	September 2002 Vandenberg AFB, CA
<i>Unannounced [suborbital]</i>	Interorbital Systems Taccyon	Fall 2002 Pacific Ocean Platform
<i>Galaxy XIII (U.S.)</i> Comm. Satellite	Sea Launch Zenit 3SL	2002 Pacific Ocean Platform
<i>NIMIQ 2 (Canada)</i> Comm. Satellite	Lockheed Martin (ILS) Atlas V	Fall 2002 Cape Canaveral Air Force Station, FL
<i>Estrela do Sol (Brazil)</i> Comm. Satellite	The Boeing Company Delta IV	Fall 2002 Cape Canaveral Air Force Station, FL

As of 1/29/02

Source: AST  
(202) 267-7989



**U.S. DEPARTMENT OF TRANSPORTATION  
Federal Aviation Administration  
FAA REGIONAL BOUNDARIES**  
Including Locations of Regional Headquarters and Centers



# FAA Resources

## FAA Employment (Permanent Employees)<sup>1</sup>

	FY 01 Revised	FY 02 Mar 02
<b>Line of Business</b>		
Air Traffic Services (ATS).....	36,349	36,216
Regulation and Certification (AVR).....	6,195	6,122
Civil Aviation Security (ACS).....	1,221	*
Airports (ARP).....	472	464
Research and Acquisitions (ARA).....	1,858	1,850
Comm. Space Transportation (AST)....	44	60
Staff Offices.....	3,762	3,794
<b>Total.....</b>	<b>49,901</b>	<b>48,506</b>
<b>Region/Center/Headquarters (included in above total)</b>		
Aeronautical Center.....	1,582	1,598
Alaskan.....	1,406	1,370
Central.....	2,587	2,511
Eastern.....	5,411	5,316
Great Lakes.....	6,588	6,448
New England.....	1,996	1,938
Northwest Mountain.....	4,224	4,082
Southern.....	7,883	7,642
Southwest.....	5,430	5,256
Western-Pacific.....	5,661	5,471
Washington Headquarters (only) <sup>2</sup> .....	4,109	3,922
Washington Headquarters Field <sup>3</sup> .....	2,055	1,992
Technical Center.....	969	960

<sup>1</sup> Full time permanent and part time permanent employees only.

<sup>2</sup> Washington Headquarters employees physically located in FOB-10A and surrounding areas (i.e. Portals, Market Square, etc.).

<sup>3</sup> Washington Headquarters employees physically located in the Field (i.e. Technical Center, Aeronautical Center, etc.)

\* ACS transferred to Transportation Security Administration (TSA). The portion of ACS that remained in FAA will be included in the totals next update.

As of: 04/26/02

Source: APF-100  
(202) 267-9946

# FAA Percent Minority & Female Employment<sup>1</sup>

Lines of Business/Region/Center/Headquarters	% Minority		%Female	
	FY 01 r	Mar 02	FY 01r	Mar-02
AirTraffic Services (ATS).....	16.8	17.1	19.1	19.2
Regulation and Certification (AVR).....	17.9	18.3	28.3	28.3
Civil Aviation Security (ACS).....	27.7	*	42.3	*
Airports (ARP).....	23.3	23.9	39.6	39.7
Research and Acquisitions (ARA).....	27.5	27.8	38.2	37.7
Commercial Space Transportation (AST).....	45.4	48.3	31.8	26.7
Staff Offices.....	32.0	31.8	54.0	53.9
<b>Total.....</b>	<b>18.9</b>	<b>18.9</b>	<b>24.3</b>	<b>23.9</b>
Aeronautical Center.....	23.7	23.5	43.4	43.6
Alaskan.....	13.8	13.6	25.3	24.4
Central.....	14.2	13.8	24.7	25.2
Eastern.....	15.4	15.1	19.4	18.9
Great Lakes.....	10.7	10.7	20.6	20.2
New England.....	7.7	7.3	21.0	20.6
Northwest Mountain.....	12.0	12.0	22.7	22.1
Southern.....	20.3	20.3	19.9	19.6
Southwest.....	21.2	22.0	20.6	20.1
Western-Pacific.....	28.6	28.6	20.8	20.6
Washington Headquarters (only) <sup>2</sup> .....	32.5	32.9	45.0	44.4
Washington Headquarters Field <sup>3</sup> .....	18.1	20.7	31.0	29.3
Technical Center.....	20.1	20.5	32.4	31.6

<sup>1</sup> Full-time permanent, and part-time permanent employees only (FTE 1111 & 1132).

<sup>2</sup> Washington Headquarters employees physically located in FOB-10A and surrounding areas (i.e. Portals, Market Square, etc.).

<sup>3</sup> Washington Headquarters employees physically located in the Field (i.e. Technical Center, Aeronautical Center, etc.).

\* ACS transferred to Transportation Security Administration(TSA). The portion of ACS that remained in FAA will be included in the totals next update.

r Revised

# Major Work Force Employment

	Employment <sup>1</sup>				
	FY 00	FY01	Mar 02	% Change	Actual Change
Air Traffic Controller Work Force	17,423	17,510	17,464	-0.3%	-46
ATCS <sup>2</sup> (bargaining unit employees)	14,904	14,997	14,991	0.0%	-6
Traffic Management Coordinators <sup>2</sup>	622	787	790	0.4%	3
Operations Supervisors <sup>2</sup>	1,897	1,726	1,683	-2.5%	-43
Flight Service Stations	2,976	2,934	2,872	-2.1%	-62
Field Maintenance (210-211 only)	7,830	8,188	8,493	3.7%	305
Security Work Force	1,136	1,172	*	*	*
Airports Work Force	440	461	454	-1.5%	-7
Research & Acquisition Work Force <sup>3</sup>	1,945	1,910	1,898	-0.6%	-12
Aircraft Certification	992	1,025	1,034	0.9%	9
Flight Standards Work Force	4,206	4,476	4,407	-1.5%	-69

<sup>1</sup> Full time permanent appointments (operations direct).

<sup>2</sup> Included in Air Traffic Controller Work Force Total.

<sup>3</sup> Includes direct operations, F&E, and R,E&D.

\* Security Work Force transferred to Transportation Security Administration.

Note: Traffic Management Supervisors (TMS) are no longer included in Controller Work Force.

Source: APF-100  
(202) 267-9946

As of: 04/26/02

# Labor Relations

	BARGAINING UNITS	LABOR AGREEMENTS	EMPLOYEES REPRESENTED
<b>Unions.....</b>	<b>48</b>	<b>21</b>	<b>38,801</b>
AFGE.....	11	7	1,540
AFSCME (HQ).....	5	0	2,035
LIUNA.....	1	1	159
NAATS.....	1	1	2,302
NAGE.....	3	2	362
NATCA (AT).....	1	2	15,214
NATCA (AF).....	5	1	1,452
NATCA (Other).....	11	0	2,895
NFFE.....	2	2	788
PAACE.....	3	2	419
PASS (AF/AEA).....	1	1	7,759
PASS (AVN).....	1	1	308
PASS (AFS).....	2	1	3,411
PASS (AIR).....	1	0	157

AFGE	--American Federation of Government Employees
AFSCME	--American Federation of State, County, and Municipal Employees
LIUNA	--Laborer's International Union of North America
NAATS	--National Association of Air Traffic Specialists
NAGE	--National Association of Government Employees
NACTA	--National Air Traffic Controllers Association
NFFE	--National Federation of Federal Employees
PAACE	--Professional Association of Aeronautical Center Employees
PASS	--Professional Airway System Specialists

As of: 5/01/02

Source: AHL-200  
(202) 267-3375

# FAA Finances

## (In Millions of Dollars)

	FY 2001	FY 2002	FY 2003
	Actual	Est.	Est.
<b>Budget Authority</b>			
Grants-In-Aid (Obligation Limitation).....	3,193	3,300	3,400
Research, Engineering, & Development....	187 <sup>1</sup>	245	127
Facilities and Equipment.....	2651 <sup>1</sup>	3024 <sup>2</sup>	3,000
Operations.....	6603 <sup>1</sup>	7,091	7,482
<b>Total.....</b>	<b>3,193</b>	<b>10,636</b>	<b>14,009</b>
<b>Obligations Incurred--Operations</b>			
<b>Appropriation by Budget Activity</b>			
Air Traffic Services.....	5,446	5,792	6,096
Regulation and Certification.....	735	810	839
Civil Aviation Security.....	150	179	9
Research and Acquisitions.....	193	199	206
Commercial Space Transportation.....	12	12	12
Regions/Center Operations.....	103	92	95
Human Resources.....	57	72	74
Financial Services.....	49	51	53
Staff Offices.....	109	114	113
Emergency Response Fund	1	473	0
Information Services/CIO	0	0	5
<b>Total.....</b>	<b>6,855</b>	<b>7,794</b>	<b>7,502</b>
<b>Airport Grant Obligations (NET)</b>			
Primary Airports & Cargo.....	1,068	1,028	1,028
States/Territories/Insular/Alaska Supp.....	743	762	766
Carryover Entitlements.....	133	315	315
Discretionary Fund.....	1,196	1,117	1,127
<b>Total.....</b>	<b>3,140</b>	<b>3,222</b>	<b>3,236</b>
<b>Total FAA Outlays.....</b>	<b>11,113</b>	<b>14,351</b>	<b># 13,724</b>
<b>Trust Fund Receipts from Excise Taxes</b>			
Passenger Ticket Tax.....	4,805	4,248	4,763
Passenger Flight Segment Tax.....	1,556	1,634	1,771
Waybill Tax.....	493	585	606
Fuel Tax.....	769	849	882
International Departure/Arrival Tax.....	1,336	1,371	1,401
Rural Airports Tax.....	82	93	96
Frequent Flyer Tax.....	150	158	162
Interest on Investment.....	882	869	623
Offsetting Collections.....	76	224	136
<b>Total.....</b>	<b>10,149</b>	<b>10,031</b>	<b>10,440</b>

Numbers may not add due to rounding.

<sup>1</sup> Reflects a reduction of 0.22% in 2001 required by P.L. 106-554.

<sup>2</sup> Includes \$15 million rescission of unobligated balances.

Source: ABU-100

(202) 267-9070

# FAA NAS Operational Facilities and FAA Aircraft (As of December 31)

	2000	1999	1998
<b>NAS Operational Facilities<sup>1</sup></b> .....	<b>40,921</b>	<b>40,360</b>	<b>38,209</b>
Communications.....	14,103	13,901	13,437
Automation.....	3,889	3,802	3,157
Environment.....	6,620	6,391	5,872
Navigation.....	11,211	11,265	11,164
Surveillance.....	1,794	1,764	1,660
Weather.....	3,304	3,237	2,919
<b>Air Traffic Control Facilities<sup>2</sup></b>			
Air Route Traffic Control Center.....	21	21	21
Airport Traffic Control Tower.....	496	492	467
Flight Service Stations.....	75	77	76
Automated Flight Service Stations	61	61	61
<b>FAA Aircraft*</b> .....	<b>50</b>	<b>49</b>	<b>48</b>

<sup>1</sup> Excludes non-federal facilities and foreign facilities.

<sup>2</sup> Included in NAS operational facilities.

Source: AOP-200  
(202) 267-5928  
ASW-280\*  
(405) 954-6231

As of: 12/31/00

# FAA Officials

## Washington Headquarters

Routing Symbol	Officials
AOA	<b>Administrator</b> <b>Jane F. Garvey, 202-267-3111</b> Thomas Zoeller, Chief of Staff, 202-267-3111
ADA	<b>Deputy Administrator</b> <b>Vacant, 202-267-8111</b> Shirley S. Miller, Executive Assistant, 202-267-8111
AOZ	<i>Free Flight</i> <i>Director, John Thornton (Actg.), 202-220-3300</i>
ABA	<b>Assistant Administrator for Financial Services</b> <b>Christoph P. Bertram, CFO, 202-267-9105</b> Deputy, John F. Hennigan, 202-267-8928
ABU*	<i>Office of Budget</i> <i>Director, JoAnn P. Horne (Atcg.), 202-267-8010</i>
AFM	<i>Office of Financial Management</i> <i>Director, David M. Zavada, 202-267-3018</i>
APF	<i>Office of Cost and Performance Management</i> <i>Director, Tim Lawler, 202-267-7140</i>
ACR	<b>Assistant Administrator for Civil Rights</b> <b>Fanny Rivera, 202-267-3254</b> Deputy, Barbara A. Edwards, 202-267-3264
AGC	<b>Chief Counsel</b> <b>David G. Leitch, 202-267-3222</b> Deputy, James Whitlow, 202-267-3773
AGI*	<b>Asst. Administrator for Government &amp; Industry Affairs</b> <b>J. Brian Riley, 202-267-3277</b> Deputy, Daivd V. Broome, 202-267-8211
AHR	<b>Asst. Administrator for Human Resource Management</b> <b>Glenda Tate, 202-267-3456</b> Deputy, Mary Ellen Dix, 202-267-3850
AHA	<i>Office of the Accountability Board</i> <i>Director, Barbara J. Smith (Actg.), 202-267-8015</i>
AHD	<i>Office of Organization, Learning &amp; Development</i> <i>Director, Paul Longanbach, 202-267-9041</i>
AHL	<i>Office of Labor &amp; Employee Relations</i> <i>Director, Melvin Harris, 202-267-3979</i>
AHM	<i>Center for Management Development</i> <i>Director, Barbara J. Smith, 386-446-7136</i>
AHP*	<i>Office of Personnel</i> <i>Director, Roger M. Edwards, 202-267-3979</i>
AIO	<b>Assistant Administrator for Information Services</b> <b>Daniel J. Mehan, CIO, 202-493-4570</b> Deputy, Arthur Pyster, 202-493-4570
AIS	<i>Office of Information Systems</i> <i>Director, Michael F. Brown, 202-267-7104</i>

\* Updated this issue

As of: 04/18/02



# FAA Officials

## Washington Headquarters--(Cont)

Routing Symbol	Officials
APA	<b>Assistant Administrator for Public Affairs</b> <b>Scott M. Brenner, 202-267-3883</b> Deputy, Laura Brown, 202-267-3883
API*	<b>Asst. Administrator for Policy, Planning, and Intl. Aviat.</b> <b>Louise E. Mailett (Actg.), 202-267-3033</b> Deputy, Louise E. Mailett, 202-267-3927
AEE	<i>Office of Environment and Energy</i> <i>Director, Carl Burtleson, 202-267-3576</i>
AIA	<i>Office of International Aviation</i> <i>Director, Ava L. Mims, 202-267-8112</i>
APO	<i>Office of Aviation Policy and Plans</i> <i>Director, John M. Rodgers, 202-267-3274</i>
ARC	<b>Assistant Administrator for Region/Center Operations</b> <b>Ruth Leverenz, 817-222-5001 / 202-267-7369</b>
ASY	<b>Assistant Administrator for System Safety</b> <b>Christopher A. Hart, 202-267-3611</b> Deputy, Daniel C. Hedges, 202-267-3611
ARA*	<b>Associate Administrator for Research and Acquisitions</b> <b>Charles E. Keegan, 202-267-7222</b> Deputy, Dennis DeGaetano, 202-267-7222
AAR	<i>Office of Aviation Research</i> <i>Director, Herman Rediess, Ph.D., 202-267-9251</i>
ABZ	<i>Office of Business Management</i> <i>Director, Lauraline Gregory, 202-267-3616</i>
AND*	<i>Office of Communications, Navigation, and Surveillance Sys.</i> <i>Director, Daniel P. Salvano, 202-267-3200</i>
ASD	<i>Office of System Architecture and Investment Analysis</i> <i>Director, John A. Scardina, 202-358-5238</i>
ASU	<i>Office of Acquisitions</i> <i>Director, Gilbert B. Devey, 202-267-8513</i>
AUA*	<i>Office of Air Traffic Systems Development</i> <i>Director, Gregory D. Burke, 202-493-0237</i>
ARP	<b>Associate Administrator for Airports</b> <b>Woodie Woodward, 202-267-9471</b> Deputy, Paul L. Galis, 202-267-8738
AAS	<i>Office of Airport Safety and Standards</i> <i>Director, David L. Bennett, 202-267-3053</i>
APP	<i>Office of Airport Planning &amp; Programming</i> <i>Director, Catherine M. Lang, 202-267-8775</i>
AST	<b>Assoc. Adm. for Commercial Space Transportation</b> <b>Patricia Grace Smith, 202-267-7793</b> Deputy, Joseph A. Hawkins, 202-267-7848

# FAA Officials

## Washington Headquarters--(Cont.)

Routing Symbol	Officials
<b>ATS</b> .....	<b>Associate Administrator for Air Traffic Services</b> <b>Monte Belger, 202-267-8111</b> <b>Steven J. Brown (Actg.), 202-267-7111</b> Deputy, Peter H. Challan, 202-267-3133
<b>AAF</b> .....	<i>Airway Facilities Service</i> Director, Alan Moore, 202-267-8181
<b>AAT</b> .....	<i>Air Traffic Service</i> Director, Bill G. Peacock, 202-267-3666
<b>ARI</b> .....	<i>Runway Safety</i> Director, William S. Davis, 202-385-4778
<b>AKS</b> .....	<i>Air Traffic System Requirements Service</i> Director, James H. Washington, 202-385-7500
<b>ASC</b> .....	<i>Office of System Capacity and Requirements</i> Director, Paula R. Lewis, 202-267-7370
<b>ATB</b> .....	<i>Terminal Business Service</i> Director, William Voss, 202-264-3500
<b>ATQ</b> .....	<i>Independent Operational Test and Evaluation</i> Director, A. Martin Phillips, 202-267-3341
<b>AVR</b> .....	<b>Associate Administrator for Regulation &amp; Certification</b> <b>Nicholas A. Sabatini, 202-267-3131</b> Deputy, Peggy Gilligan, 202-267-7804
<b>AAI</b> .....	<i>Office of Accident Investigation</i> Director, Steven B. Wallace, 202-267-9612
<b>AAM</b> .....	<i>Office of Aviation Medicine</i> Director, Jon L. Jordon, MD, 202-267-3535
<b>AFS</b> .....	<i>Flight Standards Service</i> Director, James Ballough, 202-267-8237
<b>AIR</b> .....	<i>Aircraft Certification Service</i> Director, John J. Hickey, 202-267-8235
<b>ARM</b> .....	<i>Office of Rulemaking</i> Director, Anthony F. Fazio, 202-267-9677
<b>Duty Officer</b>	<b>(202) 267-3333</b>

# FAA Officials

## Major Field Organizations

Routing Symbol	Officials
<b>AAL</b> .....	<b>Alaskan Region, Regional Administrator</b> <b>Patrick N. Poe, 907-271-5645</b> 222 West 7th Avenue, Box 14 Anchorage, Alaska 99513-7587 Duty Officer, 907-271-5936
<b>ACE</b> .....	<b>Central Region, Regional Administrator</b> <b>Christopher Blum, 816-329-3050</b> 901 Locust Kansas City, Missouri 64106 Duty Officer, 816-329-3000
<b>ACT</b> .....	<b>William J. Hughes Technical Center, Director</b> <b>Anne Harlan, Ph.D., 609-485-6641</b> Atlantic City International Airport New Jersey 08405 Duty Officer, 609-485-6482
<b>AEA</b> .....	<b>Eastern Region, Regional Administrator</b> <b>Arlene B. Feldman, 718-553-3000</b> 1 Aviation Plaza 159-30 Rockaway Blvd. Jamaica, New York 11434-4809 Duty Officer, 718-553-3100
<b>AGL</b> .....	<b>Great Lakes Region, Regional Administrator</b> <b>Cecelia Hunziker, 847-294-7294</b> 2300 East Devon Avenue Des Plaines, Illinois 60018 Duty Officer, 847-294-8400
<b>AMC</b> .....	<b>Mike Monroney Aeronautical Center, Director</b> <b>Lindy Ritz, 405-954-4521</b> 6500 South MacArthur Oklahoma City, Oklahoma 73125 Duty Officer, 405-954-3583

# FAA Officials

## Major Field Organizations--(Cont.)

Routing Symbol	Officials
<b>ANE</b> .....	<b>New England Region, Regional Administrator</b> <b>Robert S. Bartanowicz, 781-238-7020</b> 12 New England Executive Park Burlington, Massachusetts 01803 Duty Officer, 781-238-7001
<b>ANM</b> .....	<b>Northwest Mountain Region, Regional Administrator</b> <b>Larry Andriesen, 425-227-2001</b> 1601 Lind Avenue, S.W. Renton, Washington 98055-4056 Duty Officer, 425-227-2000
<b>ASO</b> .....	<b>Southern Region, Regional Administrator</b> <b>Carolyn Blum, 404-305-5000</b> 1701 Columbia Avenue College Park, Georgia 30337 Duty Officer, 404-305-5180
<b>ASW</b> .....	<b>Southwest Region, Regional Administrator</b> <b>Ruth Leverenz, 817-222-5001</b> 2601 Meacham Blvd. Ft. Worth, Texas 76137-4298 Duty Officer, 817-222-5006
<b>AWP</b> .....	<b>Western-Pacific Region, Regional Administrator</b> <b>William C. Withycombe, 310-725-3550</b> 15000 Aviation Boulevard Hawthorne, California 90261 Duty Officer, 310-725-3300

# FAA Officials

---

## International Area Offices

Routing Symbol	Officials
<b>AEU</b> .....	<b>Europe, Africa, &amp; Middle East Area Office, Director</b> <b>Paul Feldman, 011.32.2.508.2700</b> American Embassy, Brussels PSC 82 Box 002 APO AE 09724-1011
<b>ALC</b> .....	<b>Latin America &amp; Caribbean Area Office, Director</b> <b>Joaquin Archilla, 305-716-3300</b> 8600 NW 36th Street Miami, FL 33166
<b>APC</b> .....	<b>Asia-Pacific Area Office, Director</b> <b>Elizabeth E. Erickson, 011.65.543.1466</b> American Embassy 27 Napier Road Singapore 258508

# FAA STRATEGIC PLAN

## SAFETY

**GOAL:** *By 2007, reduce U.S. aviation fatal accident rates by 80% from 1996 levels.*

### **Outcome Measures:**

*Fatal Aircraft Accident Rate:* By 2007, reduce the U.S. aviation fatal accident rate per aircraft departure, as measured by a three-year moving average, by 80 percent from the three-year average of 1994-96.

*Overall Aircraft Accident Rate:* Reduce the rate per aircraft departure.

*Fatalities and Losses by Type of Accident:* Reduce the number and type of fatalities and losses from accidents that occur for each major type of accident.

*Occupant Risk:* Reduce the risk of mortality to a passenger or flight crew member on a typical flight.

### **Strategic Focus Areas:**

*Regulatory Reform:* Implement a regulatory process that is timely, responsive, and consistently applied.

*Safety information Sharing and Analysis:* Develop partnerships with the aviation community to share data and information supporting safe, secure aviation.

*Surveillance/Inspection:* Develop new approaches to working with others on inspection and surveillance and targeting FAA resources where they will do the most good.

*Accident Prevention:* Based on detailed root cause analysis, prevent accidents before they happen through appropriate, targeted, systematic interventions in the aviation system.

## **Security**

**GOAL: Prevent security incidents in the aviation system.**

### **Outcome Measures:**

*Explosive Device and Weapons Detection:* Increase ability to detect improvised explosive devices (through use of simulants) and weapons with no significant increase in operational impact - in checked and carry-on baggage and on the person.

*Compliance with Security Requirements:* Increase as measured by compliance audits.

*Risk and Vulnerability at Airports and Airway Facilities:* Reduce as measured by risk assessments.

### **Strategic Focus Areas:**

*New Security Baseline:* Continue to improve the baseline security system for civil aviation.

*Performance and Procedures:* Maximize the performance capability of people working in security for air carriers and airport operators and at FAA facilities.

*Information Security Architecture:* Develop a systematic information security architecture that describes the future NAS information security system FAA will build toward.

## SYSTEM EFFICIENCY

*GOAL: Provide an aerospace transportation system that meets the needs of users and is efficient in the application of FAA and aerospace resources.*

### ***Outcome Measures:***

*System Flexibility:* Reduce total number of published ATC preferential routes by 7%.

*User Access:* Reduce the average call waiting times for Automated Flight Service Stations (AFSS) by 20%.

*System Delays:* Reduce the rates of volume and equipment related delays by 20%.

### ***Strategic Focus Areas:***

*NAS Modernization:* Using the NAS Architecture as the guideline, continually refine and update the NAS to achieve efficient aerospace systems and operations.

*Free Flight:* Within safety consideration, work toward giving aircraft the opportunity to fly in the way that gives them the most benefit as they define it.

*Systems Integration:* Integrate airport and commercial space requirements into NAS planning and architecture.



## **ENABLING GOALS:**

### **People: The Foundation of Accomplishment**

Provide a model work environment supporting the productive, diverse, and highly skilled workforce needed to carry out the FAA mission into the twenty-first century. To accomplish this, FAA will focus on:

*Intellectual Capital*

*Managing the Diverse Work Force*

*Quality of Work Life*

### **Reform: The Framework for Accomplishment**

Fundamentally change the way the FAA operates by implementing personnel and acquisition reform and pursuing financial reform. FAA will focus on:

*Acquisition Reform*

*Personnel Reform*

*Financial Reform*

### **The Environment: Our Responsibility**

Address what may represent the single greatest challenge to the continued growth and prosperity of civil aerospace as we enter the twenty first century, focusing on:

*Understanding Aerospace Environmental Impacts*

*Reducing Aerospace Environmental Impacts of FAA Activities*

*Quantify and Mitigate Environmental Impacts of FAA Activities*

### **Global Leadership: Commitment to Worldwide Improvements**

*Improve safety, security and system efficiency globally through:*

*International Safety Oversight*

*Global Safety Action Plan*

*Global CNS/ATM Development and Implementation*

*International Regulatory Harmonization*