



UNITED STATES DEPARTMENT OF COMMERCE
National Oceanic and Atmospheric Administration
NATIONAL MARINE FISHERIES SERVICE
NORTHEAST REGION
One Blackburn Drive
Gloucester, MA 01930-2298

September 14, 1998

Dear Colleague:

Effective September 1, 1998, the Northeast Region's Sustainable Fisheries Division was restructured. The new structure was developed jointly in a series of meetings involving Division supervisors and staff. The reasons for the restructuring that are most relevant to you are to improve consistency in regulations and operational programs, and to more systematically integrate operational issues into fisheries management.

The new structure is function-based, with Division staff assigned to one of three function groups: Fishery Development, Fishery Operations and Fishery Monitoring. Staff members from each group will participate on project teams that will be set up for major tasks, such as plan amendments.

The Fishery Development Group (led by Kathi Rodrigues) will carry out fishery management plan development and review. This Group will field constituent questions about existing fishery regulations.

The Fishery Operations Group (led by John Nagle) will carry out Division programs including vessel, dealer and operator permits; experimental and exempted fishery requests; the surfclam and ocean quahog ITQ program; and all tagging programs. This Group will field questions about these programs.

The Fishery Monitoring Group (led by Hannah Goodale) will carry out inseason and annual fishery management actions that establish or adjust harvest limits, and will carry out management actions associated with harvest limits (e.g., fishery closures). This Group will field questions on these actions and will also develop public outreach materials.

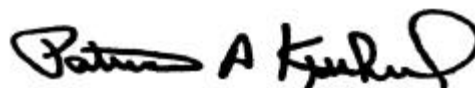
The biggest change from an external perspective is the fact that Kathi and Hannah no longer have oversight of the issues for the New England and Mid-Atlantic Councils, respectively. In addition, individual staff members no longer have ongoing, primary FMP responsibilities. This means that the lead staff for Council actions will change from action to action. This is one of the greatest adjustments for all of us, but is an outgrowth of the change to a functional focus.



The attached list of projects shows the points of contact for current tasks; it also lists individual points of contact for ongoing programs. This list will be updated regularly and distributed via email as new projects are identified. Updates will also be posted on both the NERO Bulletin Board and the NERO Homepage (<http://www.wh.who.edu/ro/doc/nero.html>).

There will be a period of adjustment as we make the transition to the new structure, but we will do our best to make this as seamless as possible.

Sincerely,

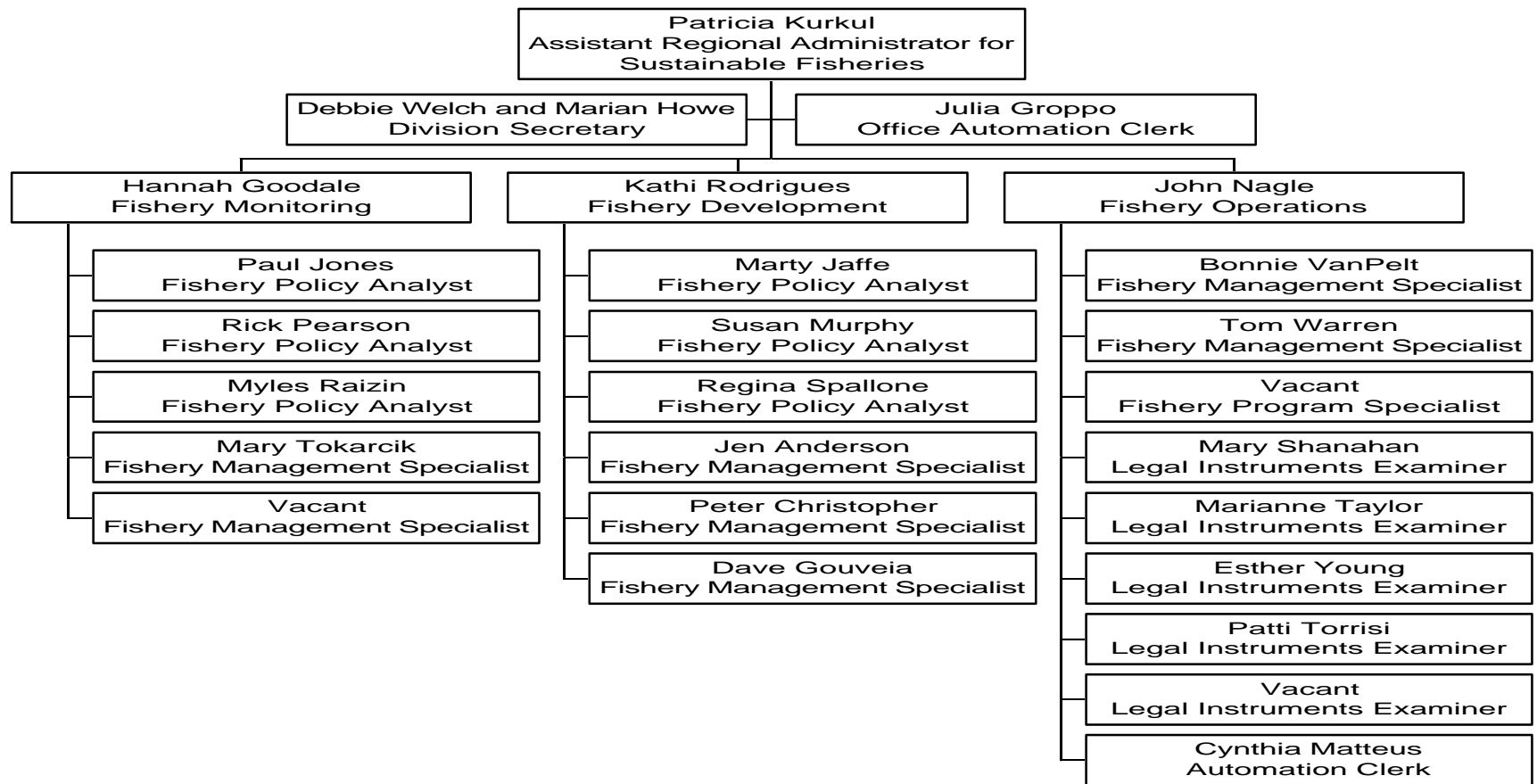
A handwritten signature in black ink that reads "Patricia A. Kurkul". The signature is written in a cursive style with a large, looped initial "P".

Patricia Kurkul, Chief
Sustainable Fisheries Division

Addressees:

Joe Brancaleone, Paul Howard
Jim Gilford, Dan Furlong
Jack Dunnigan
Maggie Hayes, Leila Afzal
Joel MacDonald, Gene Martin, Chuck Julliand
Dick Livingston, Gino Moro
Jon Rittgers, Michelle Murray
Laura Robinson
Harry Mears
Peter Colosi
Chris Mantzaris
John Witzig, Greg Power, Fisheries Statistics Agents
Leo Erwin
Mike Sissenwine
Gary Matlock, George Darcy, Mark Millikin

SUSTAINABLE FISHERIES DIVISION ORGANIZATIONAL STRUCTURE



Projects	Function Group	Supervisor	Team Leader	Primary Contact	Alternate Contact
BASELINE Audit	OPERATIONS	John Nagle x 392	Mary Tokarcik x 326	Jen Anderson x 226	Mary Tokarcik x 326
BLUEFISH Amend 1 Public Hearing Doc	DEVELOPMENT	Kathi Rodrigues x 324	Myles Raizin x 104	Myles Raizin x 104	Peter Christopher x 288
CONSISTENCY Amendment	MONITORING	Hannah Goodale x 101	Rick Pearson x 279	Rick Pearson x 279	
DOGFISH FMP Development	MONITORING	Hannah Goodale x 101	Rick Pearson x 279	Rick Pearson x 279	Dave Gouveia x 280
FLUKE/SCUP/BSB Annual Specs	MONITORING	Hannah Goodale x 101	Mary Tokarcik x 326	Regina Spallone x 221	Mary Tokarcik x 326
FLUKE/SCUP/BSB SFA Amend	DEVELOPMENT	Kathi Rodrigues x 324	Regina Spallone x 221	Regina Spallone x 221	Sue Murphy x 252
HERRING FMP Devlp & Implmnt	DEVELOPMENT	Kathi Rodrigues x 324	Marty Jaffe x 272	Marty Jaffe x 272	Myles Raizin x 104
MONKFISH FMP Development	DEVELOPMENT	Kathi Rodrigues x 324	Marty Jaffe x 272	Marty Jaffe x 272	Kathi Rodrigues x 324
MONKFISH: FMP Implementation	MONITORING	Hannah Goodale x 101	Sue Murphy x 252	Sue Murphy x 252	Jen Anderson x 226
MULTS Annual Adjstmnt: Procedures + Implmnt	MONITORING	Hannah Goodale x 101	Rick Pearson x 279	Rick Pearson x 279	Sue Murphy x 252
MULTS SFA Amendment	DEVELOPMENT	Kathi Rodrigues x 324	Sue Murphy x 252	Sue Murphy x 252	Regina Spallone x 221
ORACLE Exprm & Exmptd Prgmng (U Mass Dartmouth)	OPERATIONS	John Nagle x 392	Dave Gouveia x 280	Dave Gouveia x 280	John Nagle x 392
ORACLE Vessel Permit Conversion	OPERATIONS	John Nagle x 392	N/A		
SCALLOP Clsd Area - Exprmnt / Interim Actions	DEVELOPMENT	Kathi Rodrigues x 324	Sue Murphy x 252	Sue Murphy x 252	Paul Jones x 273
SCALLOP SFA Amendment	DEVELOPMENT	Kathi Rodrigues x 324	Paul Jones x 273	Paul Jones x 273	Dave Gouveia x 280
SMB Annual quotas	MONITORING	Hannah Goodale x 101	Paul Jones x 273	Paul Jones x 273	Marty Jaffe x 272
SMB SFA Amend	DEVELOPMENT	Kathi Rodrigues x 324	Regina Spallone x 221	Regina Spallone x 221	Sue Murphy x 252
SURF CLAM/QUAHOG SFA Amend	DEVELOPMENT	Kathi Rodrigues x 324	Regina Spallone x 221	Regina Spallone x 221	Sue Murphy x 252
SURF CLAM/QUAHOG Annual quotas	MONITORING	Hannah Goodale x 101	Dave Gouveia x 280	Dave Gouveia x 280	Myles Raizin x 104
S/K DAS Project	MONITORING	Hannah Goodale x 101	Rick Pearson x 279	Rick Pearson x 279	
TILEFISH FMP	DEVELOPMENT	Kathi Rodrigues x 324	TBA		
WHITING Amendment Development	DEVELOPMENT	Kathi Rodrigues x 324	Peter Christopher x 288	Peter Christopher x 288	Sue Murphy x 252

Programs	Function Group	Supervisor	Team Leader	Primary Contact	Alternate Contact
Confirmation of Permit History	OPERATIONS	John Nagle x 392	Tom Warren x 347	Tom Warren x 347	Cynthia Matteus x 262
Exempted Fishery Program	OPERATIONS	John Nagle x 392	Bonnie VanPelt x 244	Bonnie VanPelt x 244	Dave Gouveia x 280
Experimental Fishery Program	OPERATIONS	John Nagle x 392	Bonnie VanPelt x 244	Bonnie VanPelt x 244	Peter Christopher x 288
Exprml & Exmptd Fsh Enrollment	OPERATIONS	John Nagle x 392	Esther Young x 370	Esther Young x 370	Mary S. x 353 Patti T. x 259
ITQ Processing and Tags	OPERATIONS	John Nagle x 392	Tom Warren x 347	Tom Warren x 347	Cynthia Matteus x 262
Permitting Activities	OPERATIONS	John Nagle x 392	TBA		
Procedures Manual		TBA	TBA		
Quota Monitoring and Related Issues	MONITORING	Hannah Goodale x 101	Paul Jones x 273	Paul Jones x 273	Mary Tokarcik x 326
S/K Proposal / Experimental Fishery Review	OPERATIONS	John Nagle x 392	TBA		
Tag Programs	OPERATIONS	John Nagle x 392	TBA		
Vessel Baseline Corrections	OPERATIONS	John Nagle x 392	Tom Warren x 347	Mary Tokarcik x 326	Tom Warren x 347
Vessel Replacements and Upgrades	OPERATIONS	John Nagle x 392	Bonnie VanPelt x 244	K:/public/sfdtrack/ file total.xls for name of specific contact	Tom W. x347 Peter C. x288