

A Web Service based U.S. Cropland Visualization, Dissemination and Querying System

Rick Mueller and Zhengwei Yang
USDA/National Agricultural Statistics Service

Weiguo Han and Liping Di
GMU/Center for Spatial Information Science and Systems

ESRI Federal January 21, 2011



nassgeodata.gmu/CropScape

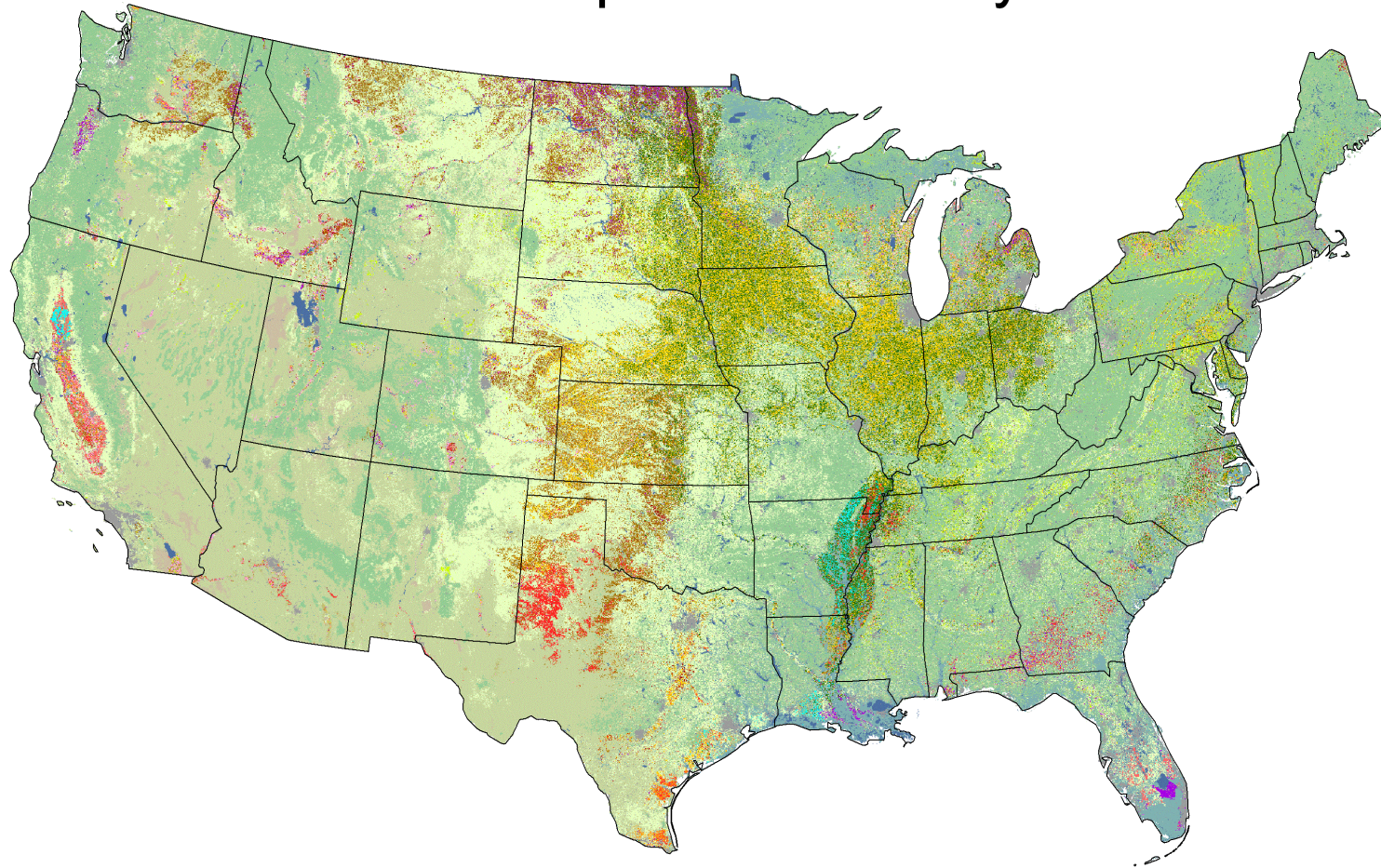




The Cropland Data Layer

- “Census by Satellite”
 - *Annually* cover major program crops and regions
 - Crops accurately geo-located
- Deliver in-season remote sensing acreage estimates
 - NASS Official Reports
 - Update planted area
 - Reduce respondent burden
- Provide timely, accurate, useful estimates
 - Measurable error
 - Unbiased/independent/robust estimator
 - State, District, County

2010 Cropland Data Layers



Major Land Cover Categories

Agriculture

- | | |
|---------------|------------------------|
| Pasture/Grass | Fallow/Idle Cropland |
| Corn | Alfalfa |
| Soybeans | Cotton |
| All Wheat | Other Crops |
| Other Hay | Vegetables/Fruits/Nuts |

- | |
|--------------------|
| Sorghum |
| Other Small Grains |
| Rice |

Non-Agriculture

- | | |
|-----------------|--------------------|
| Woodland | Barren |
| Shrubland | Perennial Ice/Snow |
| Urban/Developed | |
| Wetlands | |
| Water | |



nassgeodata.gmu.edu/CropScape





2010 Cropland Data Layer McLean County, IL

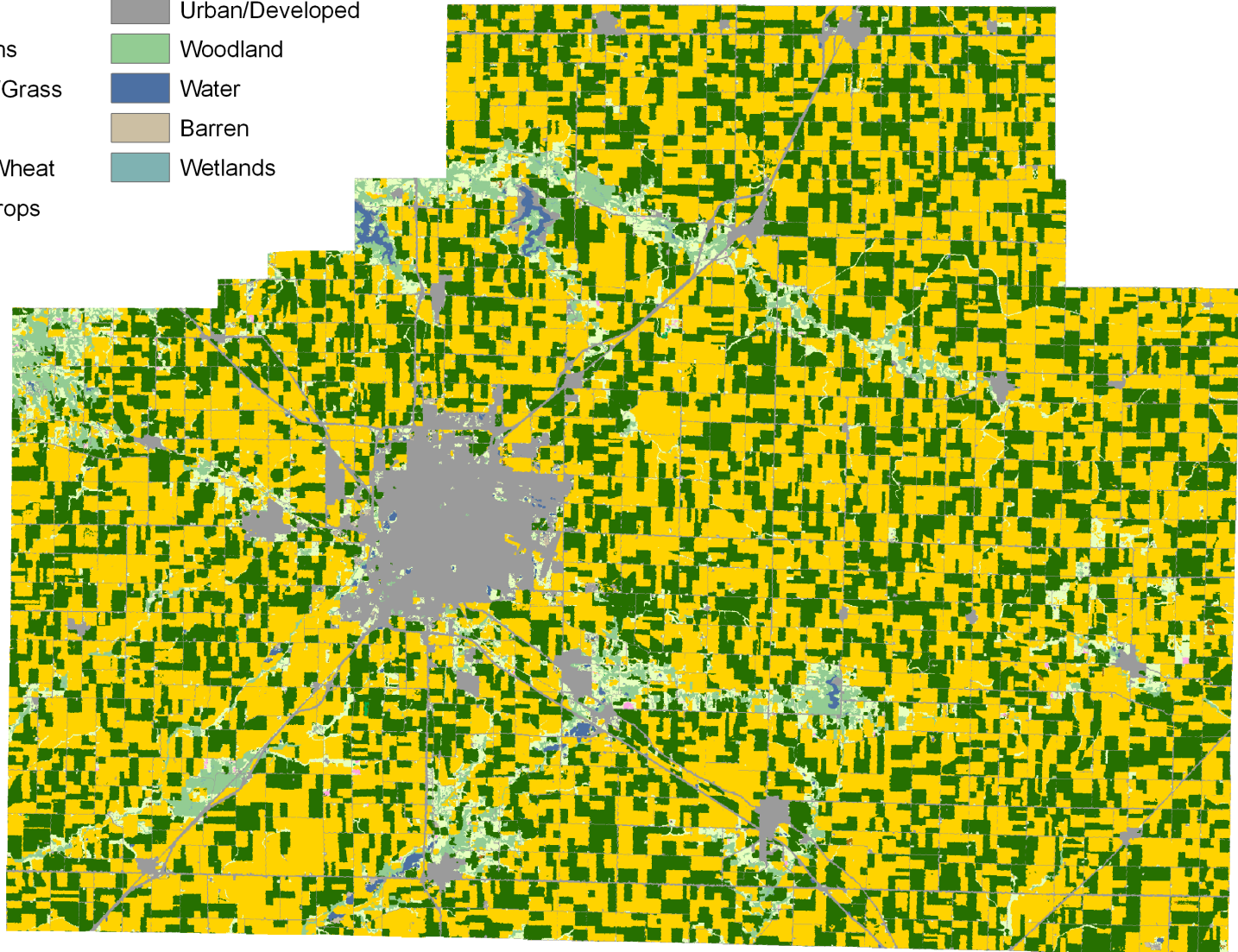
Land Cover Categories (by decreasing acreage)

Agriculture

- Corn
- Soybeans
- Pasture/Grass
- Alfalfa
- Winter Wheat
- Other Crops

Non-Agriculture

- Urban/Developed
- Woodland
- Water
- Barren
- Wetlands



nassgeodata.gmu/CropScape





CDL Visualization, Dissemination and Querying Needs

- Prior Dissemination Method:
 - Online bulk FTP downloading via NRCS Geospatial Data Gateway
 - Special request & delivery
 - Printed maps
 - CD/DVD delivery
 - Email generated
- No online geospatial information access
 - No geospatial crop visualization & browsing
 - No geospatial query capability
 - No geospatial online analytics
- NASS Needs...
 - Capabilities for on-line geospatial crop information access, geospatial query and on-line analytics via interactive maps
 - Disseminate all data to decision makers and users via real time retrieval, processing and publishing over the web through standards-based geospatial web services



nassgeodata.gmu/CropScape

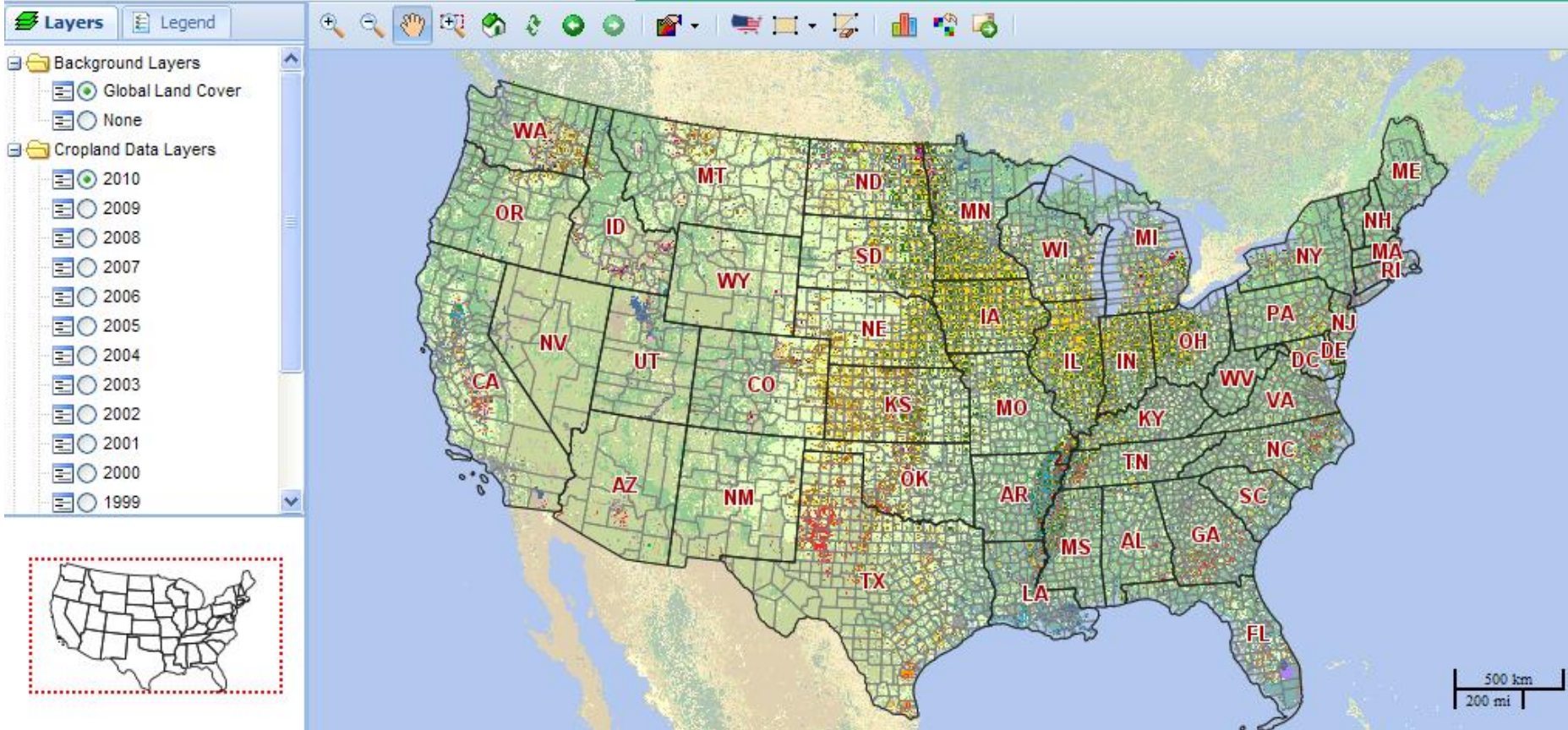


Solution - CropScape

- A web service based interactive map visualization, dissemination and querying system for U.S. cropland
 - No burden on users
 - No client software development & installation
 - No special software tools needed
 - Equitable cropland information access, automatic and timely delivery, geospatial navigation, retrieval, queries and dissemination
- Collaboration with George Mason University/ Center for Spatial Information Science and Systems



CropScope - Cropland Data Layer





Technology Under the Hood

- Open Standard Geospatial Information Science Technology
 - Adoption of specifications and standards from the OGC Sensor Web Enabled initiative: WFS, WCS, CSW, WMS, WPS etc.
 - Re-using of SEPSeb Processing Service (WPS)
- Web Service Based Service Oriented Architecture
- Service Integration
 - Support of workflows: BPEL execution engine
 - Re-use all algorithms published in WPS
- GeoBrain Technology(GMU developed)
 - Open, standards compliant, interoperable, distributed, web GIS
 - Re-use functions/algorithms developed in GeoBrain



nassgeodata.gmu.edu/CropScape



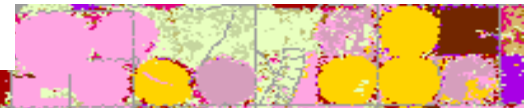


CropScape Functions

- Select any historical CDL by state and year circa 1997
- Zoom in/out & Pan
- Search by county and year
- Sub-setting by state, county, and year
- Sub-setting for any area of interest by a bounding box
- Re-projecting data to a user specified map projection
 - Albers, Geographic, UTM
- Download the CDL subset in GeoTiff format
- Exporting selected CDL subset to Google Earth (KML)



nassgeodata.gmu.edu/CropScape





CropScape Functions –Cont.

- Online pixel counting & acreage statistics
- Online statistics graphing/charting
- Maps showing the change of crop types for a state, county, or any area specified between any two years of CDL
- On-the-fly single/multi crop map generation, display and download
- Web service implemented
 - Geospatial query statistics data delivery
 - CDL map AOI data delivery



CropScape Defined

Visual Tools

Point Query

Stats/Change/Download

Layers Legend

- Background Layers
 - Global Land Cover
 - None
- Cropland Data Layers
 - 2010
 - 2009
 - 2008
 - 2007
 - 2006
 - 2005
 - 2004
 - 2003
 - 2002
 - 2001
 - 2000
 - 1999

Layer/Legend

Layers Legend

Cropland Data Layer:

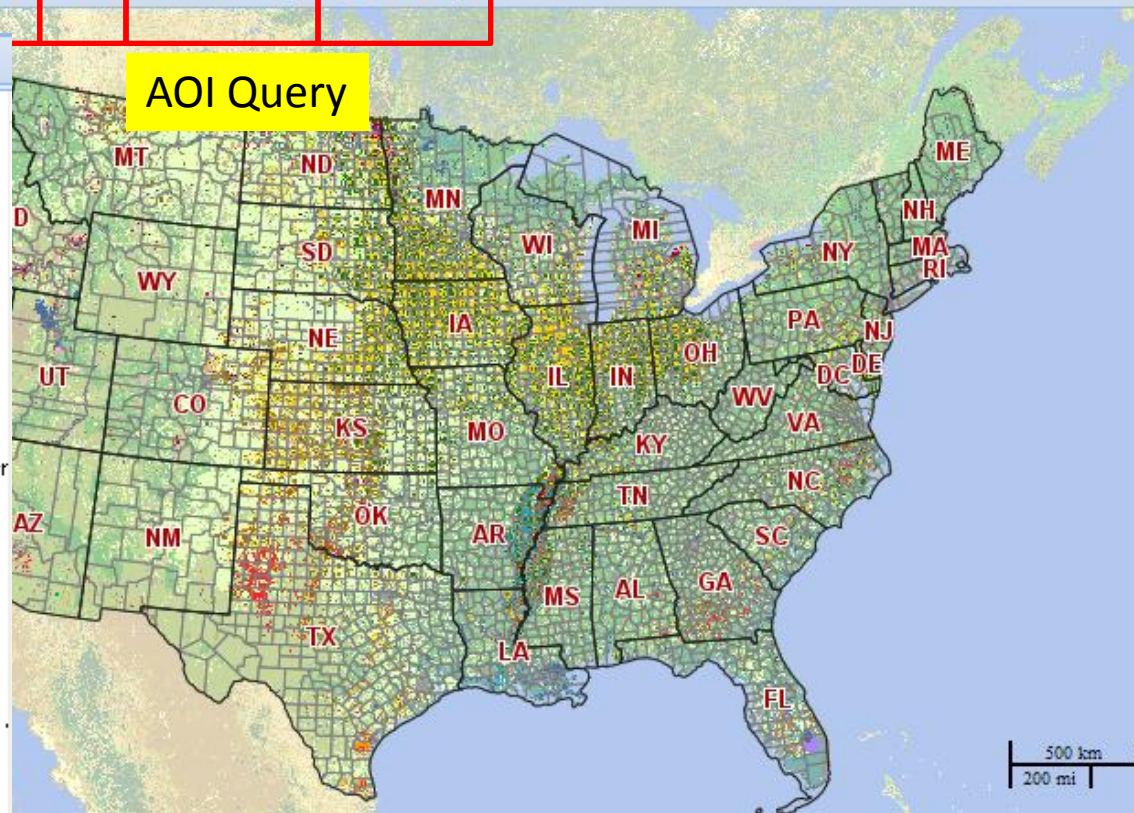
- Corn
- Cotton
- Rice
- Sorghum
- Soybeans
- Tobacco
- Sweet Corn
- Popcorn or Ornamental Cor
- Mint
- Barley
- Durum Wheat
- Spring Wheat
- Winter Wheat
- Other Small Grains
- Winter Wheat/Soybeans Db.
- Rye
- Oats
- Millet
- Speltz
- Canola
- Flaxseed
- Safflower
- Rape Seed

Visual Tools toolbar: pan, zoom, home, refresh, etc.

Point Query toolbar: point query tool, map, etc.

Stats/Change/Download toolbar: stats, change, download, etc.

AOI Query



Map Overview

Define Area of Interest By State/ASD/County

Select a State

State: Iowa

Select an ASD

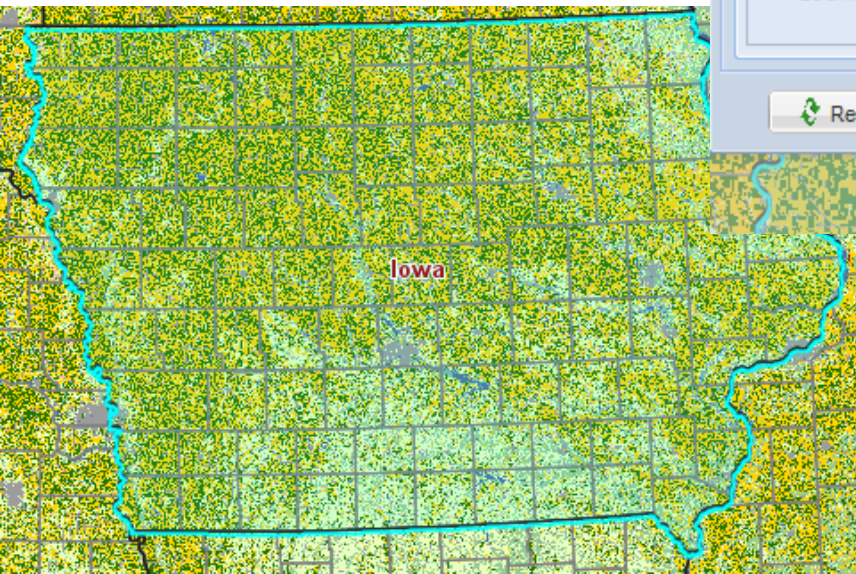
ASD: Select an ASD...

Or Select a County

County: Select a county...

Reset Submit Cancel

State



Select AOI

Define Area of Interest By State/ASD/County

Select a State

State: Iowa

Select an ASD

ASD: [dropdown menu]

Or Select a County

County: [dropdown menu]

Reset

ASD

Define Area of Interest By State/ASD/County

Select a State

State: Iowa

Select an ASD

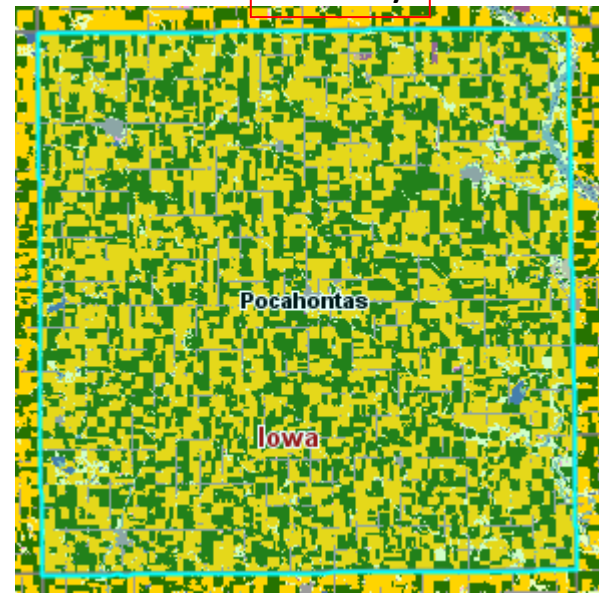
ASD: Select an ASD...

Or Select a County

County: Pocahontas

Reset Submit Cancel

County



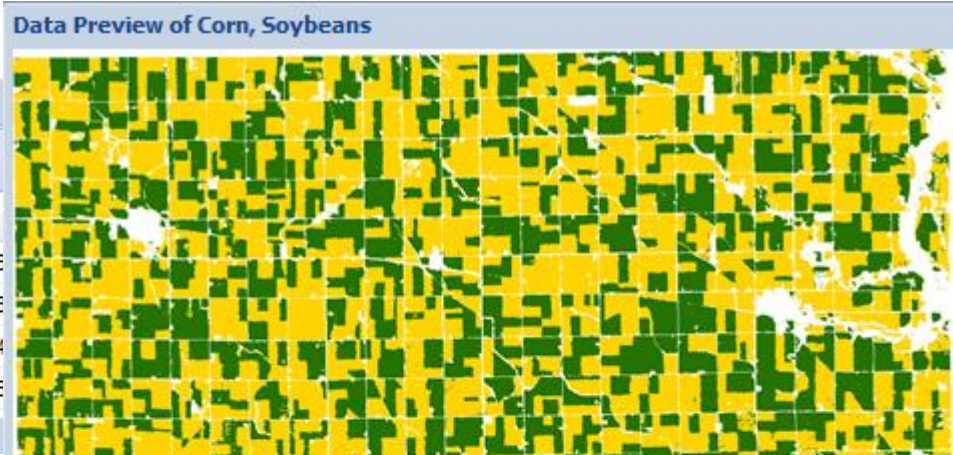
CropScape Stats

Pie/Histogram/Graphic

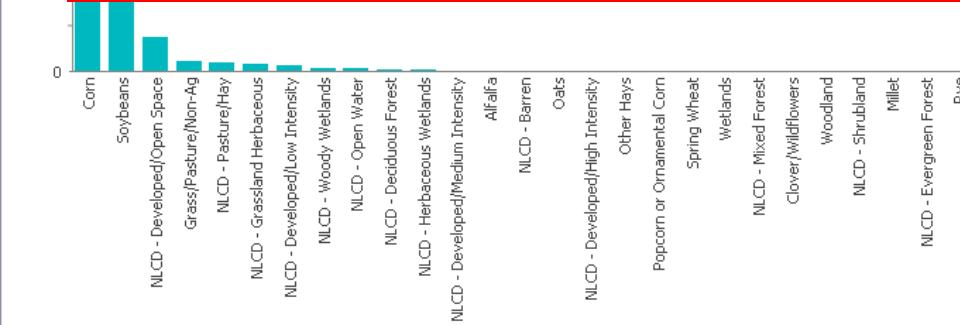
2010 Cropland Data Layer Statistics for Pocahontas, Iowa

Note: Pixel counts are not official estimates.

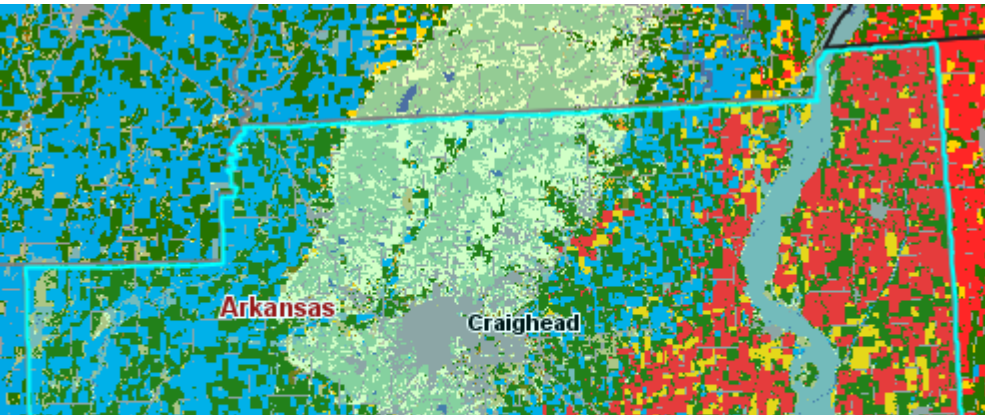
Value	Category	Pixel Counts	Acreage
1	Corn	807149	179505.6
5	Soybeans	669233	148833.8
121	NLCD - Developed/Open Space	84172	18719.4
62	Grass/Pasture/Non-Ag	23425	5209.6



Pixel counting is usually downward biased when compared to official estimates. Counting pixels and multiplying by the area of each pixel will result in biased area estimates and should be considered raw numbers needing bias correction. Official crop acreage estimates at the state and county level are available at <http://www.nass.usda.gov/>.



CropScape Change Analysis



Change Analysis ✕

Select the Reference Year: ▾

Select the Other Year: ▾

Cropland Data Layer Changes between 2009 and 2008

Note: Pixel counts are not official estimates.

<input type="checkbox"/>	2009	2008	Pixel Counts ▾	Acreage
<input type="checkbox"/>	Rice	Soybeans	133502	103453.6
<input type="checkbox"/>	Soybeans	Rice	129916	100674.7
<input type="checkbox"/>	Cotton	Cotton	120872	93666.3
<input type="checkbox"/>	Soybeans	Soybeans	106428	82473.4
<input type="checkbox"/>	NLCD - Developed/Open Space	NLCD - Developed/Open Space	85414	66189.2
<input type="checkbox"/>	NLCD - Woody Wetlands	NLCD - Woody Wetlands	83660	64830
<input type="checkbox"/>	NLCD - Deciduous Forest	NLCD - Deciduous Forest	73312	56811.1
<input type="checkbox"/>	Other Hays	Other Hays	61496	47654.6
<input type="checkbox"/>	Rice	Rice	39116	30311.8
			1177212	912239.6

CropScape Download & Export

CDL Downloading - Please specify your choice(s)

Select Year(s)

Year: 2010 2009 2008 2007
 2006 2005 2004 2003
 2002 2001 2000 1999
 1998 1997

Specify Projection

Projection: USA Contiguous Albers Equal Area Conic USG
USA Contiguous Albers Equal Area Conic USGS
Degrees Lat/Lon, WGS84 Datum
UTM Zone 15
UTM Zone 16
UTM Zone 14

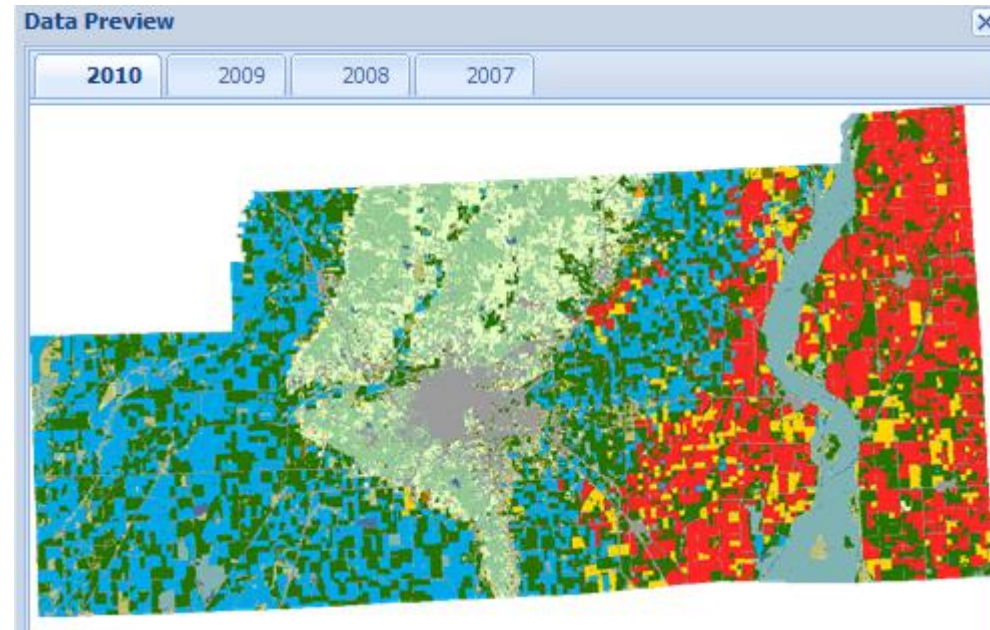
Specify Years and Projection

Download Files from Server

http://129.174.131.228/nass_data_cache/polygonclip_201101180/

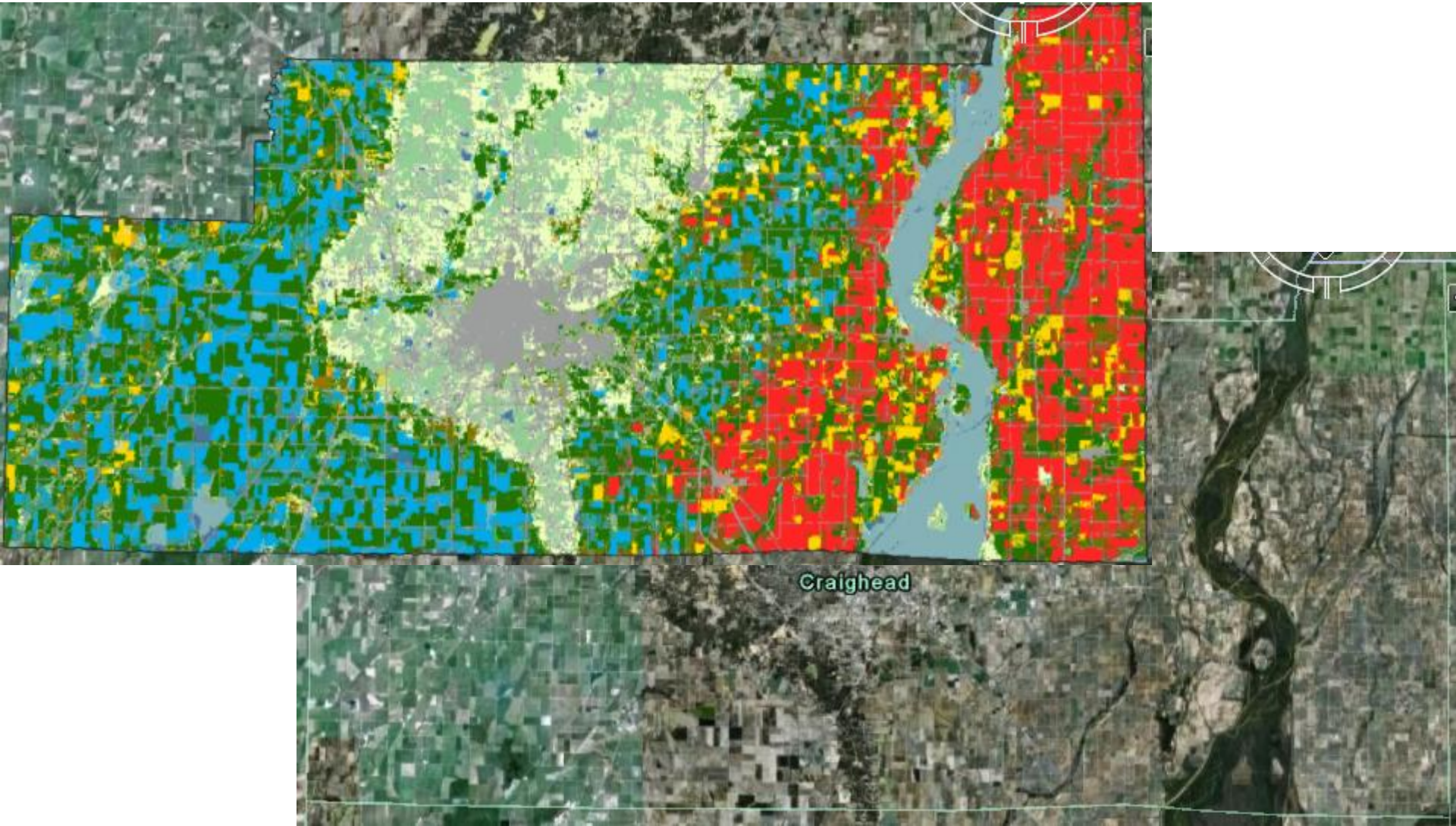
Download Preview Export as KML

Preview and Download





CropScape w/ Google Earth

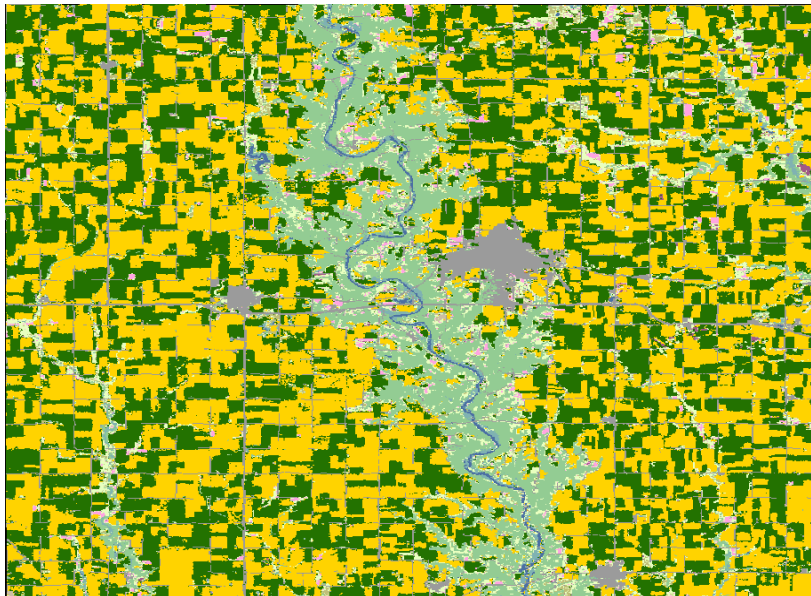


nassgeodata.gmu.edu/CropScape



Web Service Examples

- 1) <http://nassgeodata.gmu.edu/CropScape/GetCDL?year=2009&fips=19015>
- 2) <http://nassgeodata.gmu.edu/CropScape/GetNASSStatData?year=2008&fips=19015&commcode=11199199>



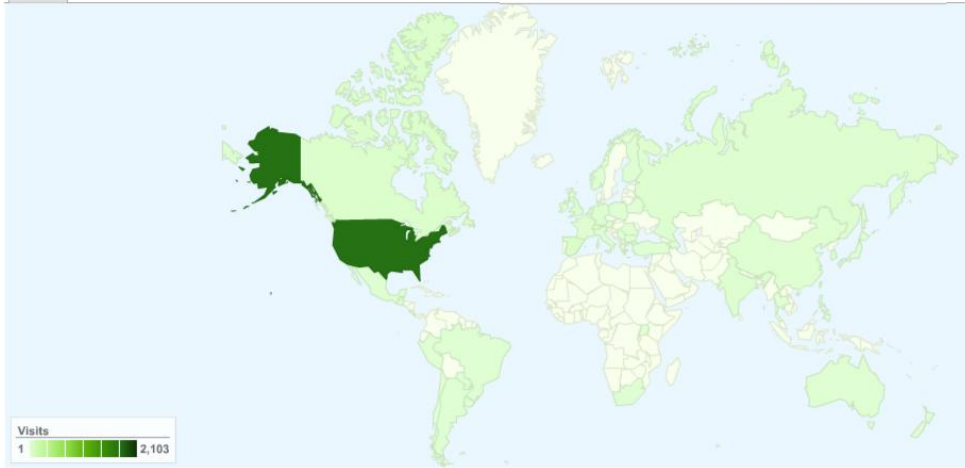
Service a)

Year: 2008
State: IA
County: Boone
Commodity: Corn For Grain
Planted: 163500
Harvested: 158500
Yield: 166.0000
Production: 26300000

Service b)

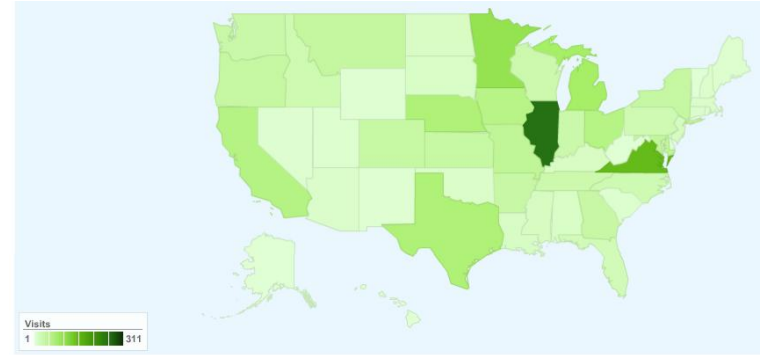


CropScape Metrics



2,413 visits came from 44 countries/territories

Detail Level: City | Country/Territory | Sub Continent Region | Continent Dimension: **None**



This country/territory sent 2,103 visits via 52 regions



- Direct Traffic
1,257.00 (52.09%)
- Referring Sites
1,096.00 (45.42%)
- Search Engines
60.00 (2.49%)



nassgeodata.gmu.edu/CropScape





CropScape Future Improvements

- Additional GIS layers
 - watershed, congressional districts, roads
- Multi-year crop acreage statistical change graphics for state, county, or area
- Change analysis mapping
- Map production/printing services
- More analysis functions





CropScape Summary

- State of the art CDL visualization, querying and dissemination tool
- Interactive geospatial statistical analysis tools
 - Online/interactive analytics, charting and mapping
 - Geospatial information access, navigation
 - CDL map and statistical result retrieval and dissemination web services
- Open geospatial standards compliant



nassgeodata.gmu.edu/CropScape



Thank you!



Spatial Analysis Research Section
USDA/NASS R&D Division

nassgeodata.gmu/CropScape