



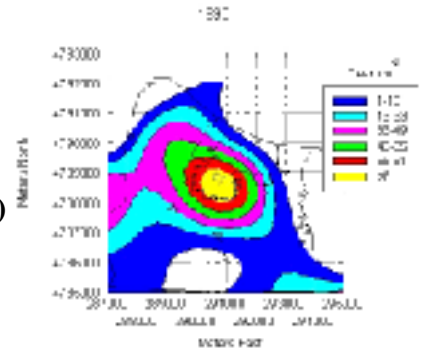
New York - Home to Patuxent Wildlife Research Center - Syracuse

Vital Statistics

- Headquartered at the College of Environmental Science & Forestry, Syracuse; established in 1992
- Subsumed the former Cooperative National Park Studies Unit
- Research focus on terrestrial fauna management, population biology, modeling and simulation, geographical information systems technology
- Has one research scientist who is also a member of the Faculty of Environmental & Forest Biology
- Since its inception, the unit has garnered nearly one million dollars in research and graduate student support

Partnership with the College of Environmental Science & Forestry (ESF)

- Collaboration with NYS Department of Environmental Conservation
- ESF is the largest institution in the world dedicated solely to the study of the natural environment
- ESF is an accredited PhD granting institution
- Highly acclaimed programs in Environmental & Forest Biology include Fisheries and Wildlife Science, Conservation Biology, Plant Sciences & Biotechnology
- Facilities and properties include the Adirondack Ecological Center, Cranberry Lake Biological Station, and the Quantitative Studies Laboratory



Current Research

Policy and Management

- Adaptive management of deer, people and plants on Fire Island National Seashore.

Conservation Biology

- The role of disturbance in the long-term viability of a coastal maritime forest fragment

Population Biology

- Bioenergetic and demographic consequences of immuno-contraception in a free-ranging white-tailed deer population.
- The role of *Peromyscus leucopus* demography in the epidemiology of Lyme Disease
- Effects of supplemental feeding on the overwinter survival and well-being of fawns in the Adirondack Mountains.

Quantitative Ecology

- Modeling variance components of distance data with emphasis on spatial and temporal variation in encounter rate.
- Estimating survival and modeling change in a white-tailed deer population exposed to 7 years of fertility control.

National and Regional Technical Assistance

- Large mammal management in National Parks
- Natural resources monitoring
- White-tailed deer abundance assessment and management in National Parks
- Wild horse and burro management

