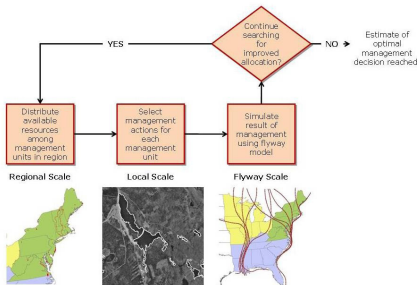


Integrated Waterbird Management and Modeling



- **The Challenge:** Sustaining healthy populations of waterbirds that migrate long distances (waterfowl, shorebirds, and wading birds) is a major challenge for land managers. How does a manager know which species to manage for at a specific site? How important is a single site in the big picture? How can many managers coordinate their actions across the landscape so that the birds have the right amount and quality of habitat, at the right time, in the right places? These questions are difficult to answer without understanding how all the pieces fit together.



Model linking habitat management decisions at three spatial scales.

- **The Science:** Managers and scientists are working together in a new project to understand and optimally manage conservation lands along the Atlantic and Mississippi Flyways to support continental populations of waterbirds. They are using adaptive management and modeling in an innovative way that incorporates their management expertise as well as new conservation planning and modeling tools.



- **The Future:** The project is an example of the partner-driven approach that will be the underpinning of the Landscape Conservation Cooperatives that are being formed. This work bridges the scientific and management communities in the pursuit of conservation by providing data, analysis, model predictions, and decision analysis, all designed in the context of management decisions.