
Bravo Company In-Brief

**BLACK
KNIGHTS**



“Leadership Starts Here”

AGENDA



- **Mission**
 - **Chain of Command**
 - **Command Initiative**
 - **UCMJ**
 - **Company Hours**
 - **Formation/Accountability**
 - **Travel Limits**
 - **Sickcall/Emergencies**
 - **Weapon Registration**
 - **MWR**
 - **Questions**
-

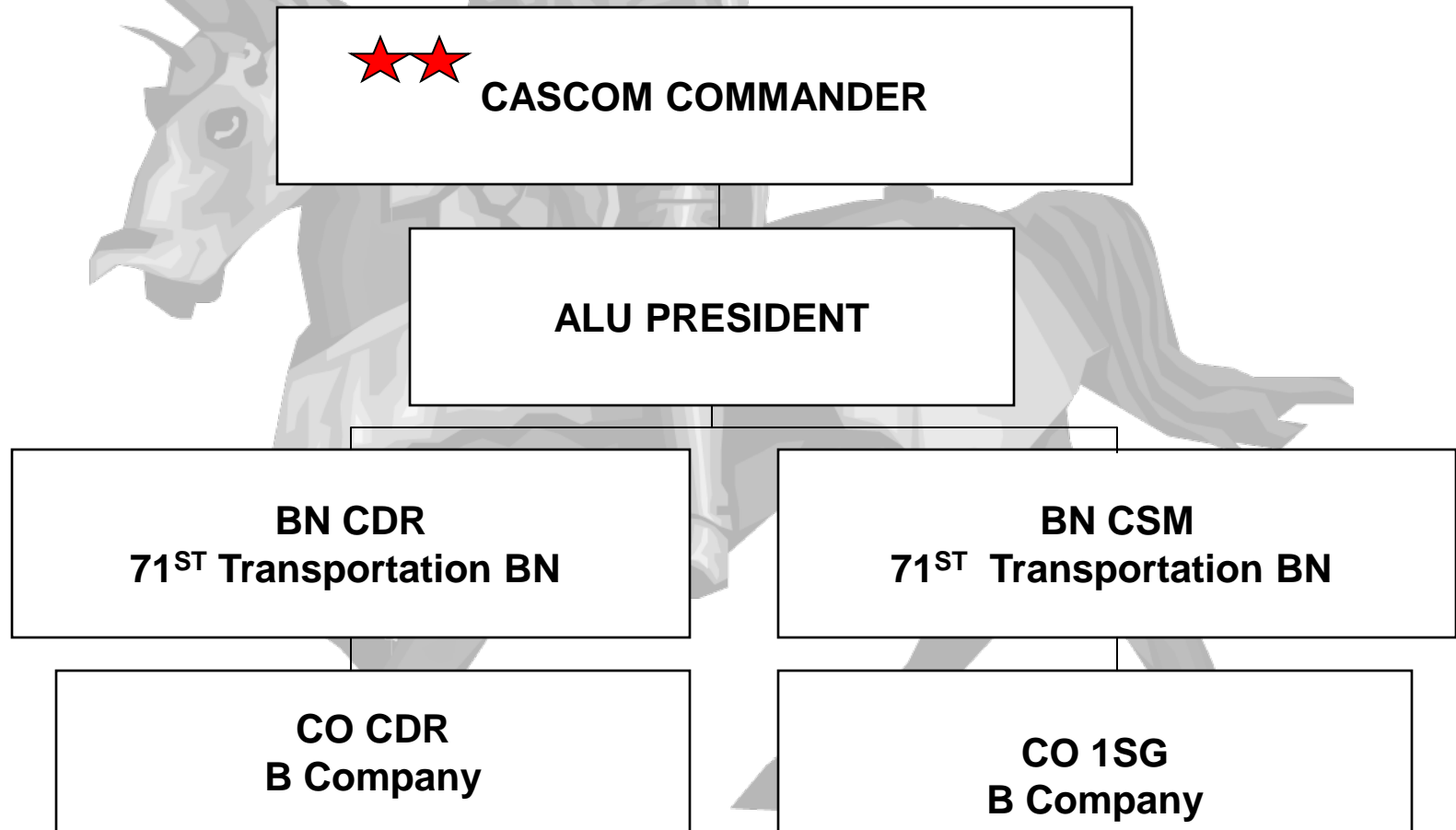
COMPANY MISSION



To support, train, and lead both US and International officers to become Quartermaster Warriors who are technically proficient, battle focused, deployment ready, and prepared to contribute and survive with a Warrior Spirit on today's non-contiguous battlefield.

CHAIN OF COMMAND

Administrative/UCMJ



COMPANY CADRE

COMMAND TEAM

Commander
804-765-8128
cell: 804-691-5156

1SG
804-765-8127
cell: 804-691-8797

Company XO

Company OPS OIC

SUPPLY TECH
765-8014

ADMIN TECH
765-8107

ADMIN TECH
765-8115

COMMAND INITIATIVE



- LEADERSHIP
 - TRAINING
 - SELF-DISCIPLINE
 - TEAMWORK
 - SAFETY
 - OPEN DOOR POLICY
 - ENJOY YOUR TIME HERE
-

COUNSELING / UCMJ

- DUI / DWI
 - DRUG USE
 - OFFICER MISCONDUCT
 - IMPROPER
RELATIONSHIPS/FRATERNIZATION
 - SPEEDING/PARKING
 - FIGHTING
 - HEIGHT/WEIGHT FAILURES
 - APFT FAILURES
 - LATE FOR FORMATION / CLASS
-



**QUESTIONS
OR
CONCERNS**

1SSG



BRAVO COMPANY HOUR OF OPERATIONS



MONDAY 0800-1630

TUESDAY 0800-1630

WEDNESDAY 0800-1630

THURSDAY 0800-1130

FRIDAY 0800-1630

**S-1 and Class Leaders
Have free range.**

**Do not use student copier
to copy course material**

**Thursday 1300-1700
Training and Admin Time**

FORMATION / ACCOUNTABILITY



- **ACCOUNTABILITY:**

- Accountability Formations:

- Mondays or 1st duty day of the week and Fridays or the last duty day of the week at 0600hrs in the courtyard of Army Logistics University. Mon-Fri, Accountability Reports due to Bravo Company Admin clerk (RM 1450) by **0830 daily**.

- **Physical Training: IAW Class Schedule.**

- Must turn-in a copy of PT schedule to the company
 - Must use safety vests and flashlights

- **Road Closures:**

- B Ave** and **Shop Road** are closed between the hours of **0500 to 0730 Monday – Friday**. You cannot drive down these roads during these times.

- If caught doing so you will receive a citation from the MP's and counseling from the commander.

TRAVEL LIMITS




- **PASS NEEDED FOR 250 MILES OR MORE**
(or for exemption of duty status)
- **MILEAGE LIMITS**
 - 250 miles for 2 day wknd
 - 350 miles for a 3 day wknd
 - 450 miles for a 4 day wknd
- **TURN-IN TYPED PASSES/LEAVES, POV INSPECTIONS AND RISK ASSESSMENT BY COB TUESDAY EACH WEEK**
- **PASS MUST BE SIGNED BY YOUR TAC AND HAVE YOUR CONTACT NUMBER**
- **MUST PHYSICALLY SIGN IN/OUT ON LEAVE AT ALU SDNCO DESK**

TRAVEL LIMITS

FLIGHTS, YOU MUST HAVE A SIGNED
DA 31 BEFORE BUYING AIRLINE
TICKETS!!!

SICK CALL



- BULL DENTAL CLINIC: 0730 – 0930
 - DENTAL APPOINTMENT 734-9609
 - (Every 2LT is required to go to dental)
 - (Initial appointment made by B co)
- MEDICAL:
 - CALL TRICARE FOR AN APPOINTMENT:
 - 1-866-533-5242 (1-866-MIL-HLTH).
 - WALK IN HOURS 0600-0800 (ACTIVE DUTY CLINIC)
- **EMERGENCIES:** GO TO THE HOSPITAL IMMEDIATELY FOR LIFE, LIMB, OR EYESIGHT!!
 - CALL (804) 734-9000 FOR TRICARE AUTHORIZATION
 - **John Randolph**
 - **Southside Regional Medical Center**

REGISTRATION

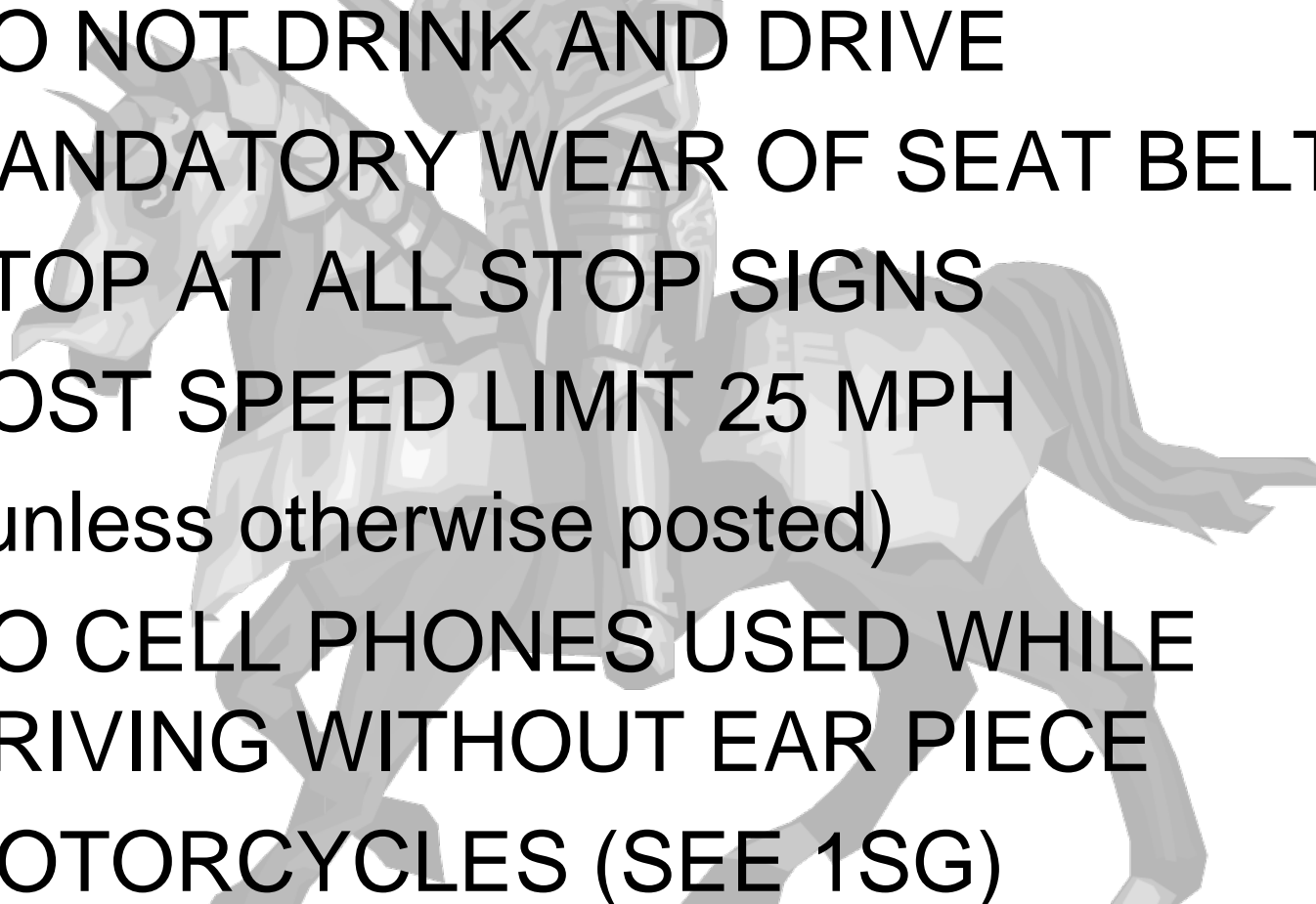
- WEAPONS

- NOTIFY CDR OR 1SG WITHIN 24 HRS OF INPROCESSING

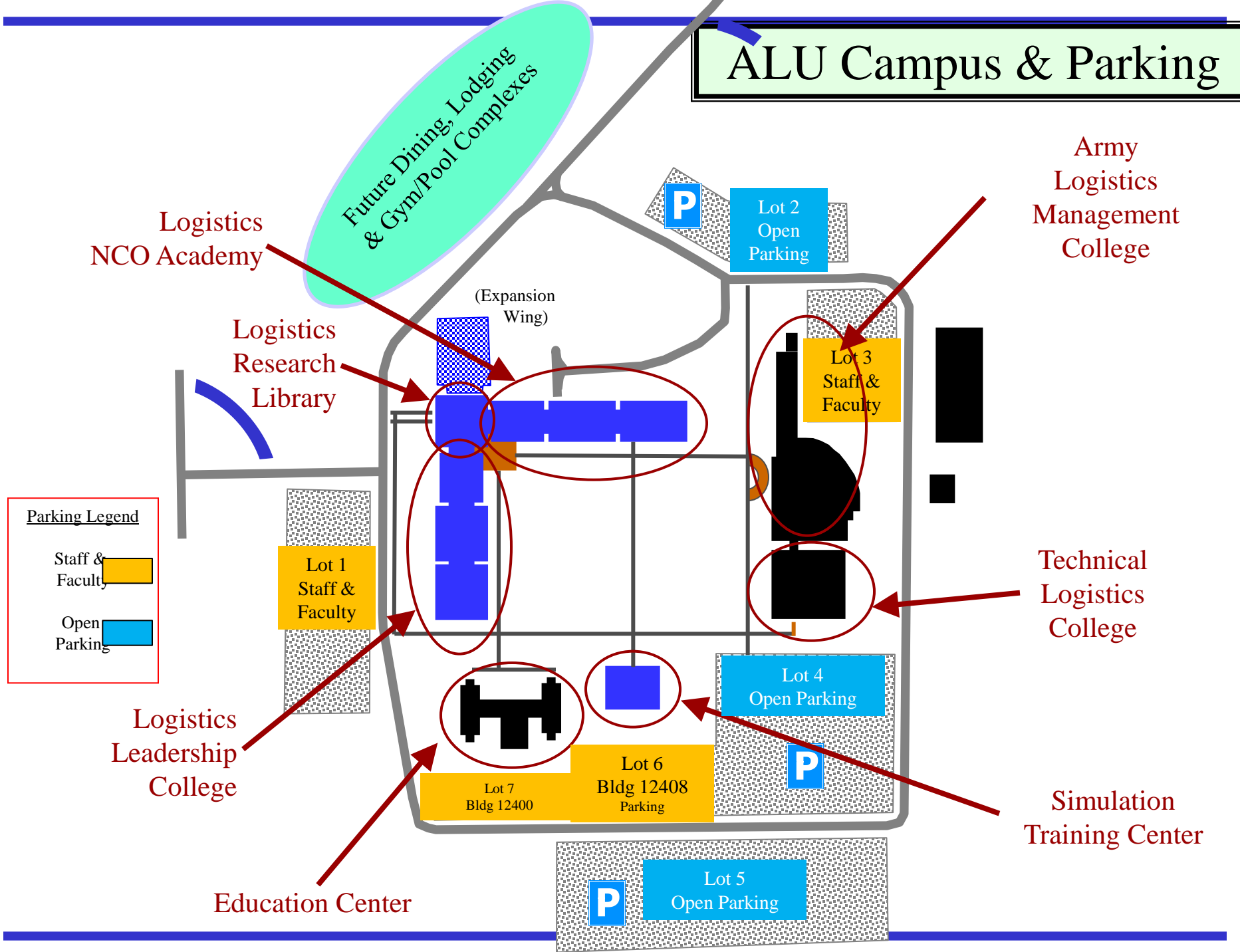
- REGISTER WITH PROVOST MARSHALL WITHIN 72 HOURS

- TURN INTO THE 23D QM BDE ARMS ROOM

TRAFFIC LAWS

- DO NOT DRINK AND DRIVE
 - MANDATORY WEAR OF SEAT BELTS
 - STOP AT ALL STOP SIGNS
 - POST SPEED LIMIT 25 MPH
(unless otherwise posted)
 - NO CELL PHONES USED WHILE DRIVING WITHOUT EAR PIECE
 - MOTORCYCLES (SEE 1SG)
- 
-

ALU Campus & Parking



MORALE WELFARE & RECREATION (MWR)

- LEE CLUB/PO OL & REGIMENTAL CLUB
(BLDG 9009/ 2609)
 - LEE PLAYHOUSE (BLDG 3600)
 - BOWLING CENTER (BLDG 9040)
 - CARDINAL GOLF COURSE (BLDG 11810)
 - CLARK & MACLAUGHLIN GYM
(BLDG 2414/ 4320)
 - ALU LIBRARY M-F 0800-2100
SAT 1000-1900 SUN 1200-1800
-

LEADERS

- STANDARDS
- PROFESSIONALISM
- ACCOUNTABILITY
- UNIFORM
- MENTORSHIP
- FLEXIBLE



OPEN DOOR POLICY



ALWAYS OPEN TO ASSIST YOU IN EVERY WAY.

- DO NOT leave Fort Lee with an issue unsolved or without an explanation on why it can not be resolved here.

QUESTIONS

