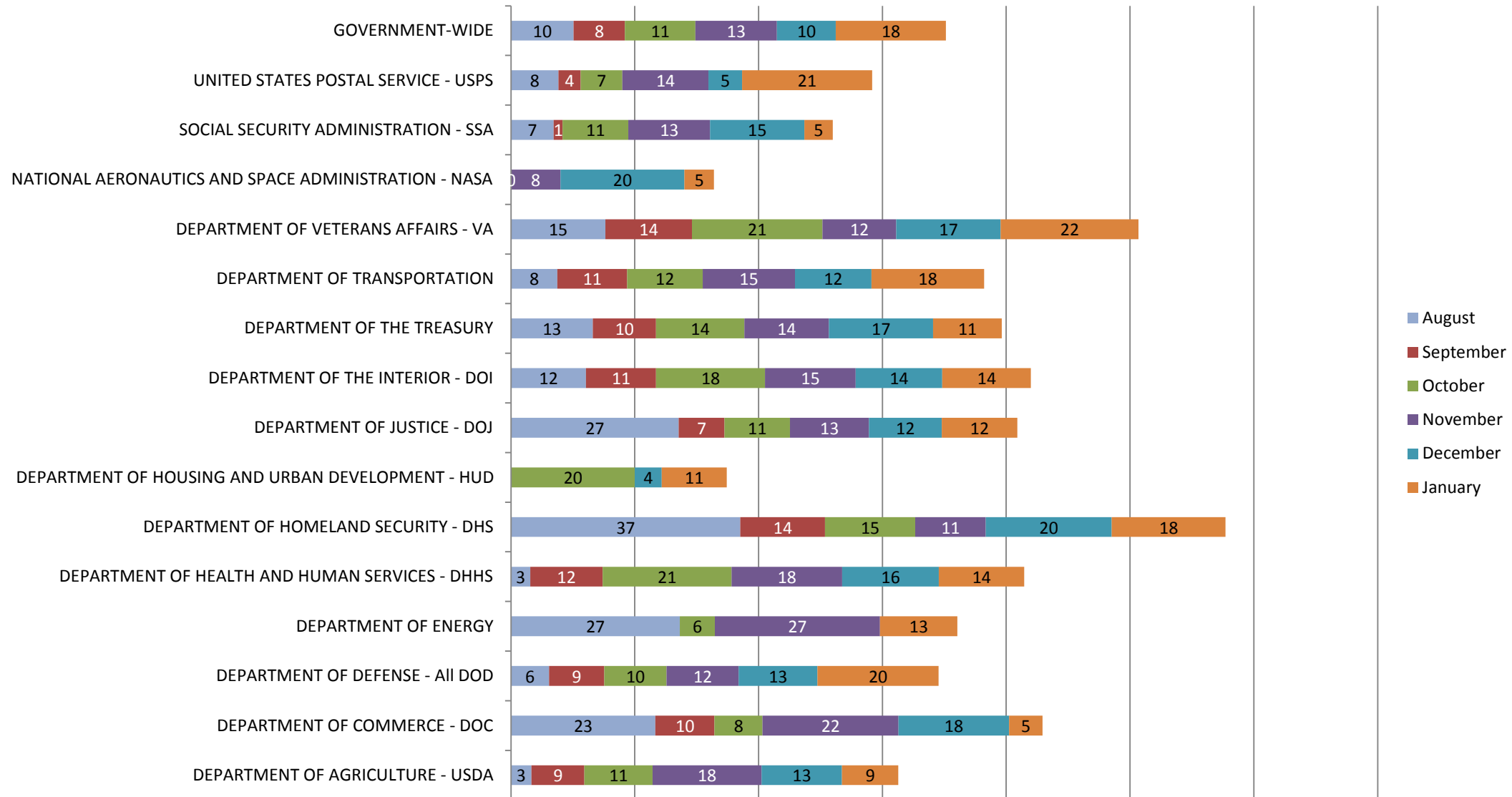


Percentage of CSRS/FERS New Claims w/ Errors by Agency



Agency	August		September		October		November		December		January	
	# of Cases	% of Cases w/ Errors	# of Cases	% of Cases w/ Errors	# of Cases	% of Cases w/ Errors	# of Cases	% of Cases w/ Errors	# of Cases	% of Cases w/ Errors	# of Cases	% of Cases w/ Errors
ADMINISTRATIVE OFFICE OF THE US COURTS - AOUSC					39	13	41	22	58	21	36	14
DEPARTMENT OF AGRICULTURE - USDA	91	3	70	9	209	11	176	18	177	13	99	9
DEPARTMENT OF COMMERCE - DOC	30	23	21	10	77	8	41	22	56	18	37	5
DEPARTMENT OF DEFENSE - All DOD	650	6	887	9	1558	10	1434	12	1168	13	729	20
DEPARTMENT OF ENERGY	22	27			53	6	30	27			16	13
DEPARTMENT OF HEALTH AND HUMAN SERVICES - DHHS	32	3	60	12	72	21	95	18	64	16	58	14
DEPARTMENT OF HOMELAND SECURITY - DHS	54	37	73	14	206	15	123	11	172	20	98	18
DEPARTMENT OF HOUSING AND URBAN DEVELOPMENT - HUD					25	20			23	4	19	11
DEPARTMENT OF JUSTICE - DOJ	48	27	54	7	161	11	141	13	170	12	131	12
DEPARTMENT OF THE INTERIOR - DOI	33	12	53	11	108	18	116	15	143	14	105	14
DEPARTMENT OF THE TREASURY	121	13	98	10	224	14	220	14	202	17	108	11
DEPARTMENT OF TRANSPORTATION	40	8	71	11	164	12	114	15	154	12	110	18
DEPARTMENT OF VETERANS AFFAIRS - VA	210	15	250	14	503	21	628	12	398	17	278	22
NATIONAL AERONAUTICS AND SPACE ADMINISTRATION - NASA			17	0			25	8	20	20	21	5
SOCIAL SECURITY ADMINISTRATION - SSA	58	7	69	1	132	11	53	13	184	15	109	5
UNITED STATES POSTAL SERVICE - USPS	431	8	417	4	1189	7	1493	14	3749	5	748	21
GOVERNMENT-WIDE	1955	10	2248	8	4977	11	4956	13	7006	10	2853	18

**The table above shows the agency by retirement application error rates for agencies in the October audit with at least 15 cases reviewed. The table shows the number of cases for the agency and the percent of cases with errors. If a case has more than one error, it is counted as a single case with an error. The Government-wide results are also shown.