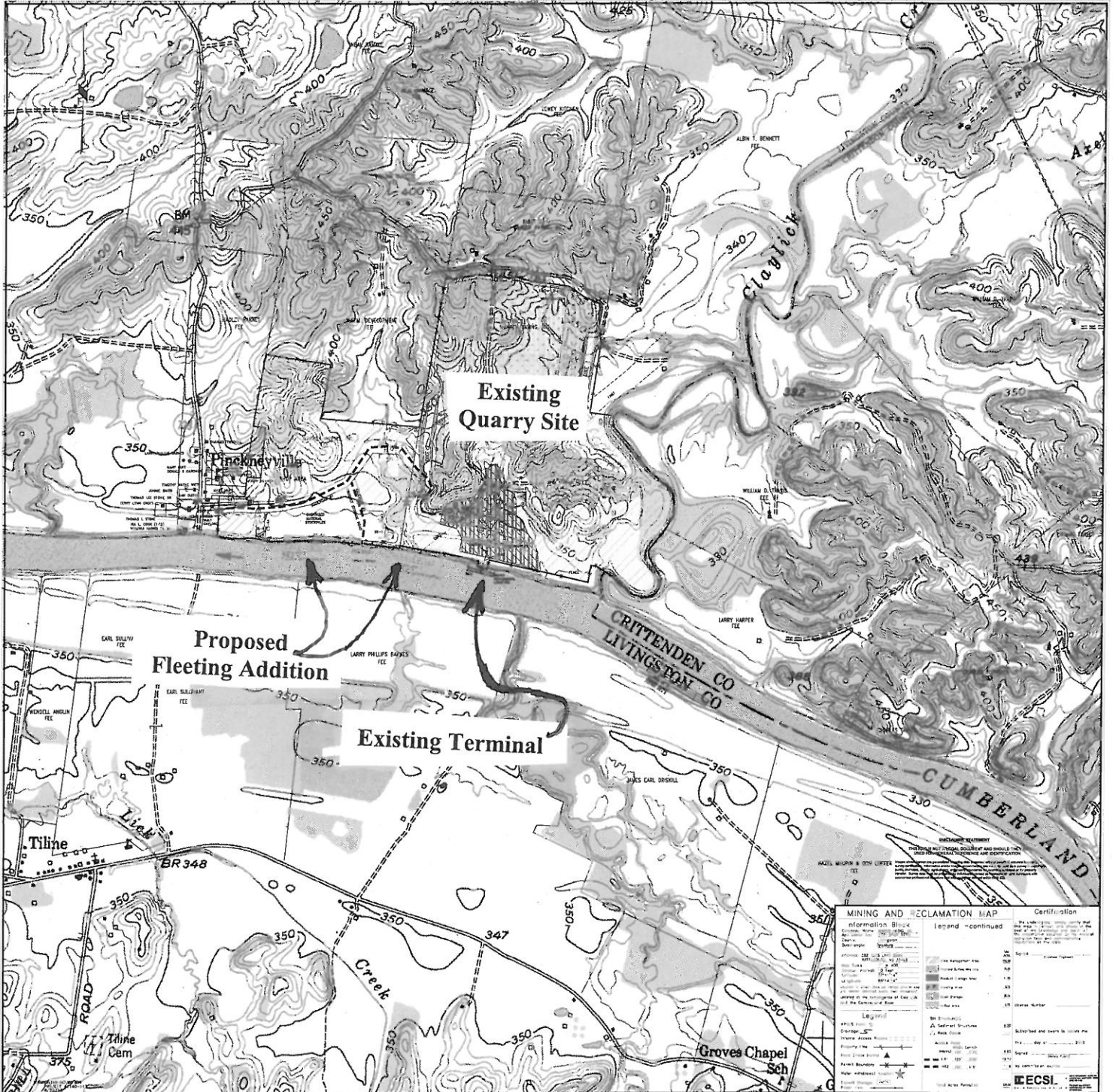


File No. 2004-02122

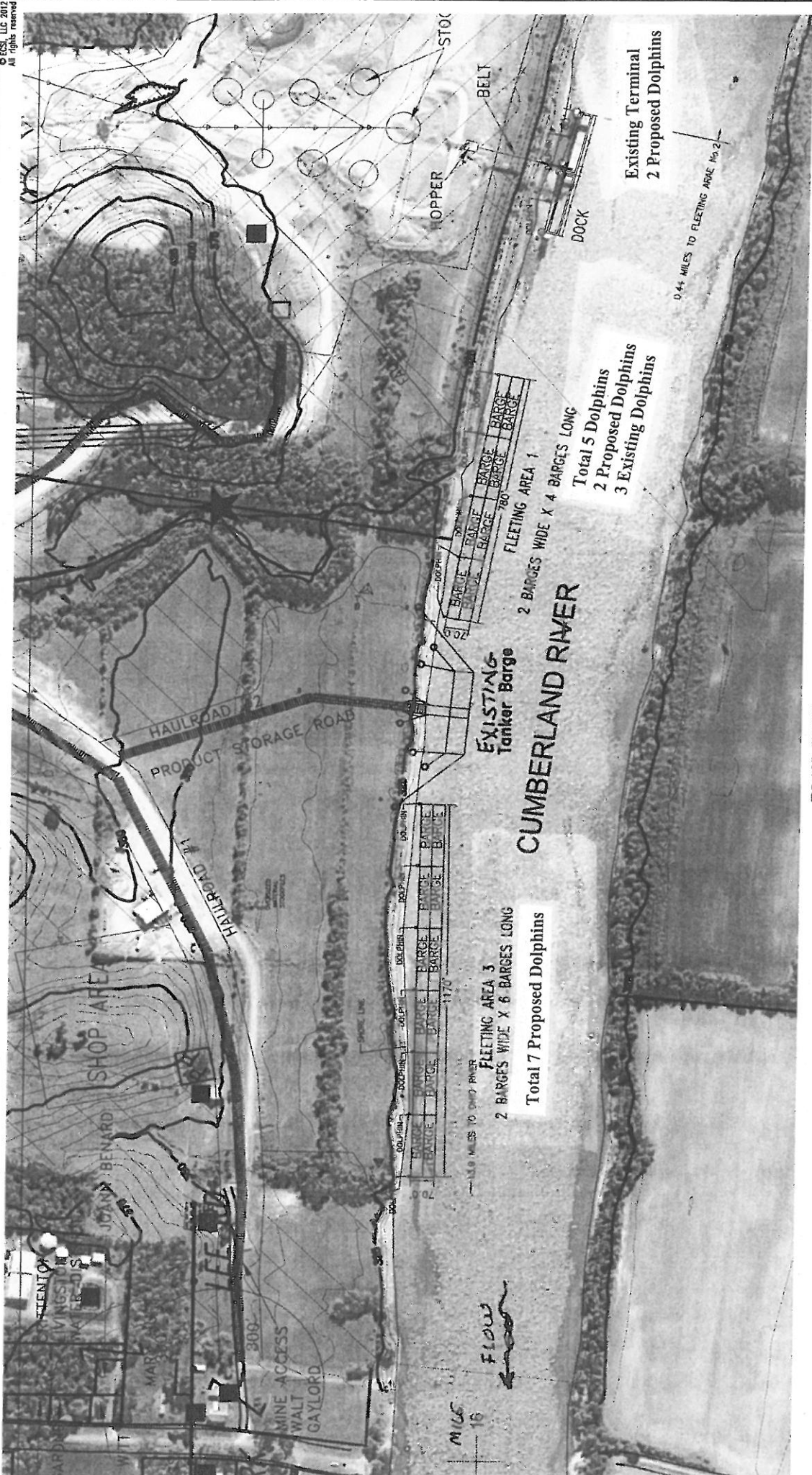
PN 13-01

Dycusburg Quad

Slats Lucas Quarry



© ECSI, LLC 2012
All rights reserved



EXISTING Terminal
2 Proposed Dolphins

Total 5 Dolphins
2 Proposed Dolphins
3 Existing Dolphins

2 BARGES WIDE X 4 BARGES LONG
Total 7 Proposed Dolphins

2 BARGES WIDE X 6 BARGES LONG
Total 7 Proposed Dolphins

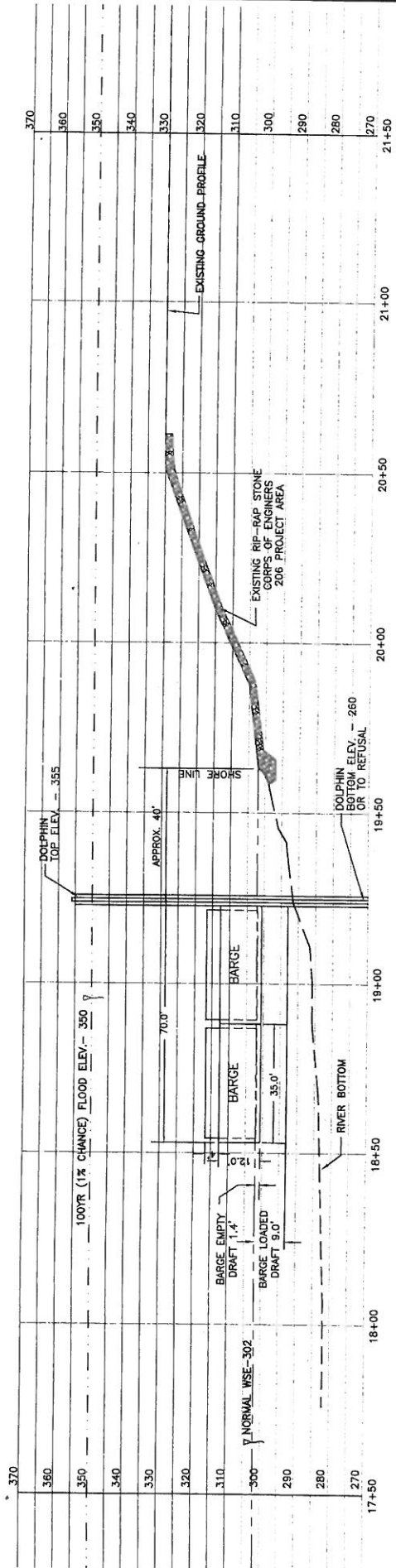
PLAN VIEW

File No. 2004-02122
PN 13-01
Slats Lucas Quarry
Dycusburg Quad



ECSI, LLC
 CIVIL ENVIRONMENTAL MINING
 WARREN PAVING
 LIVINGSTON COUNTY, KENTUCKY
 PROJECT: PROPOSED BARGE FLEETING AREA PLAN VIEW FOR AREAS 1 & 3
 DATE: 2.20.12
 SCALE: 1"=300'
 0 300' 600'

File No. 2004-02122
PN 13-01
Dycusburg Quad
Slats Lucas Quarry

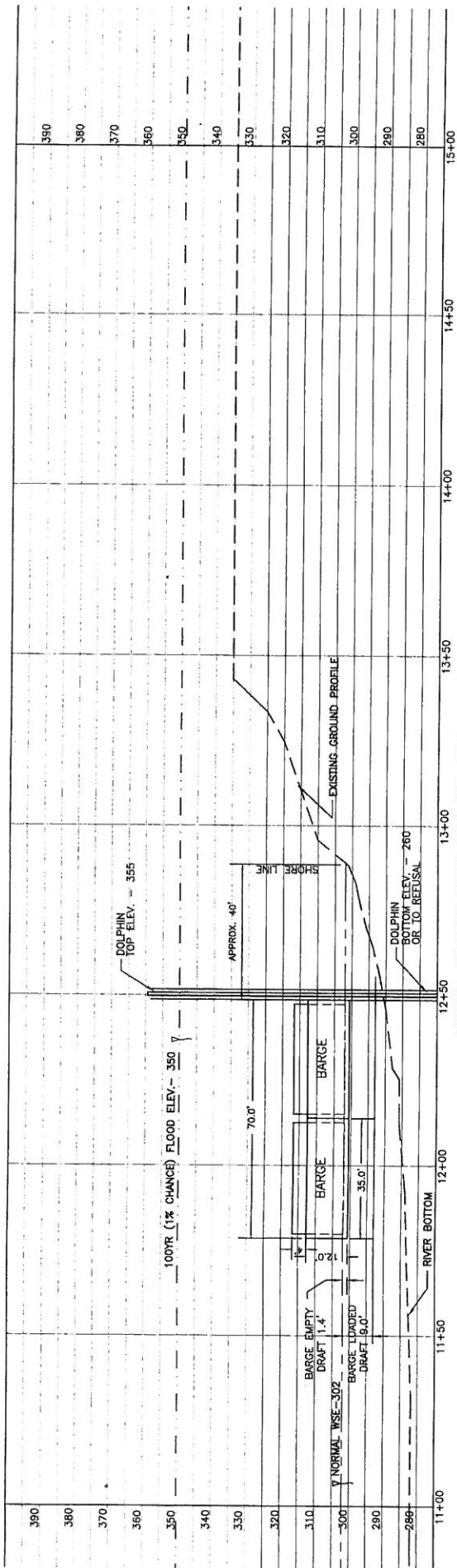


TYPICAL SECTION THRU FLEETING AREA No. 1

SCALE: HORIZ: 1"=30'
VERT: 1"=30'

ECSI, LLC	CORPORATE OFFICE 240 S. BROADWAY, SUITE 200 LEXINGTON, KENTUCKY 40508 (606) 252-1655
	208 HANLEY BOULEVARD LIVINGSTON COUNTY, KENTUCKY 41081 (606) 432-2443
CIVIL ENVIRONMENTAL MINING CLIENT: WARREN PAVING	LOCATION: LIVINGSTON COUNTY, KENTUCKY
PROJECT: FLEETING AREA No. 1 CUMBERLAND RIVER	DATE: 03/14/2012 REVISED: 01/26/2012 PROJ. NO.: 116207

FLEETING AREA #1



TYPICAL SECTION THRU FLEETING AREA No. 3

SCALE: HORIZ: 1"=30'
VERT: 1"=30'

ECSI, LLC
CORPORATE OFFICE
240 S. BROADWAY, SUITE 200
KENTON, KENTUCKY 40506
(859) 232-2100

CIVIL ENVIRONMENTAL MINING
308 HAMBLEY BOULEVARD
PIKEVILLE, KENTUCKY 41501
(606) 432-2443

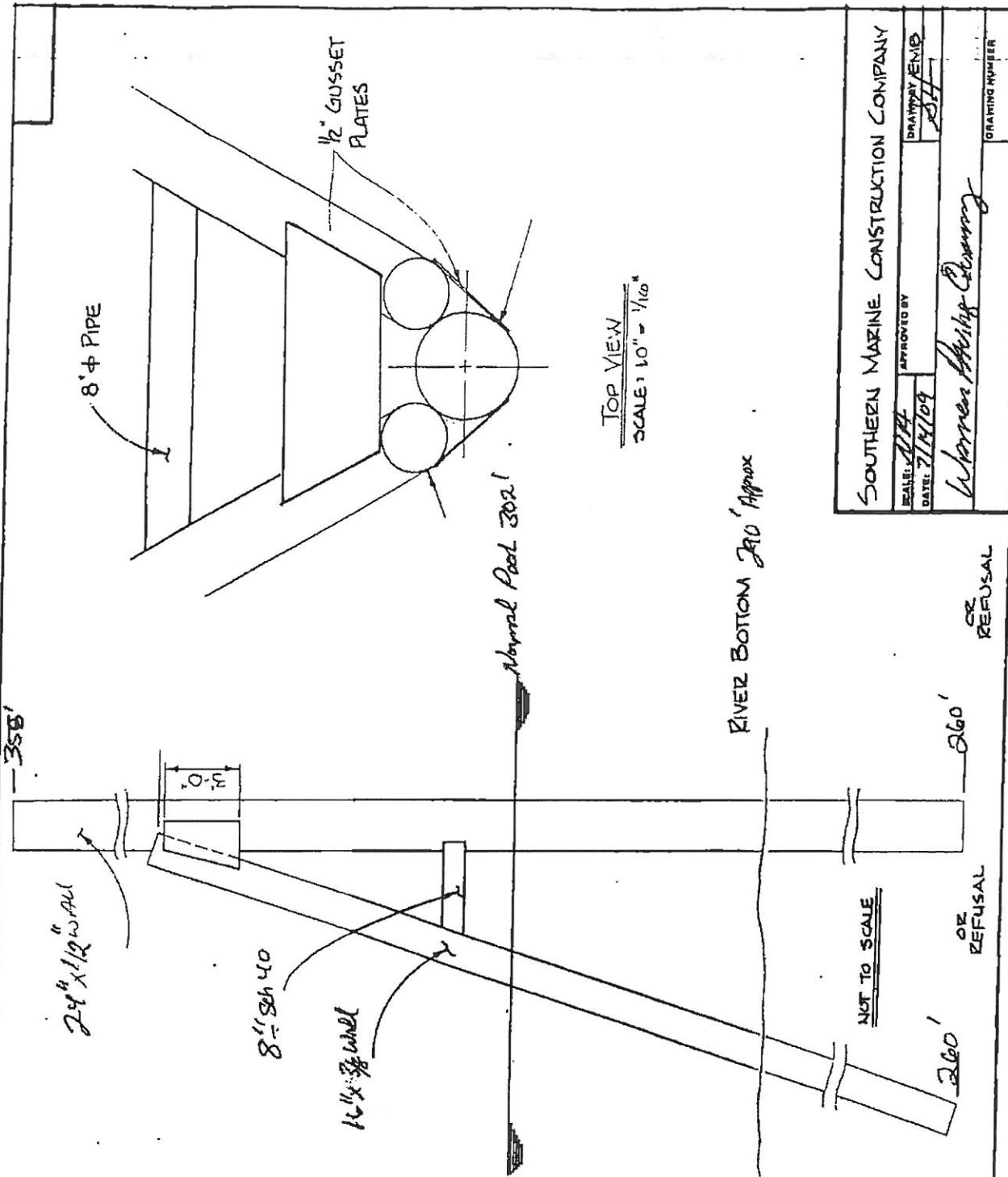
CLIENT: **WARREN PAVING**
LOCATION: LIVINGSTON COUNTY, KENTUCKY

FILEPATH: LIVINGSTON COUNTY, KENTUCKY
DATE: 02/16/2012 * REVISED: 07/19/2012
PROJECT: FLEETING AREA No. 3
CUMBERLAND RIVER
PROJ. NO.: 116307

FLEETING AREA # 3

File No. 2004-02122
PN 13-01
Slats Lucas Quarry
Dycusburg Quad

File Warner



File No. 2004-02122
 PN 13-01
 Slats Lucas Quarry