

Before and After Hurricane Ike Images—Sabine National Wildlife Refuge, Louisiana (Landsat 5 Thematic Mapper Satellite Imagery and SPOT 5 Satellite Imagery)



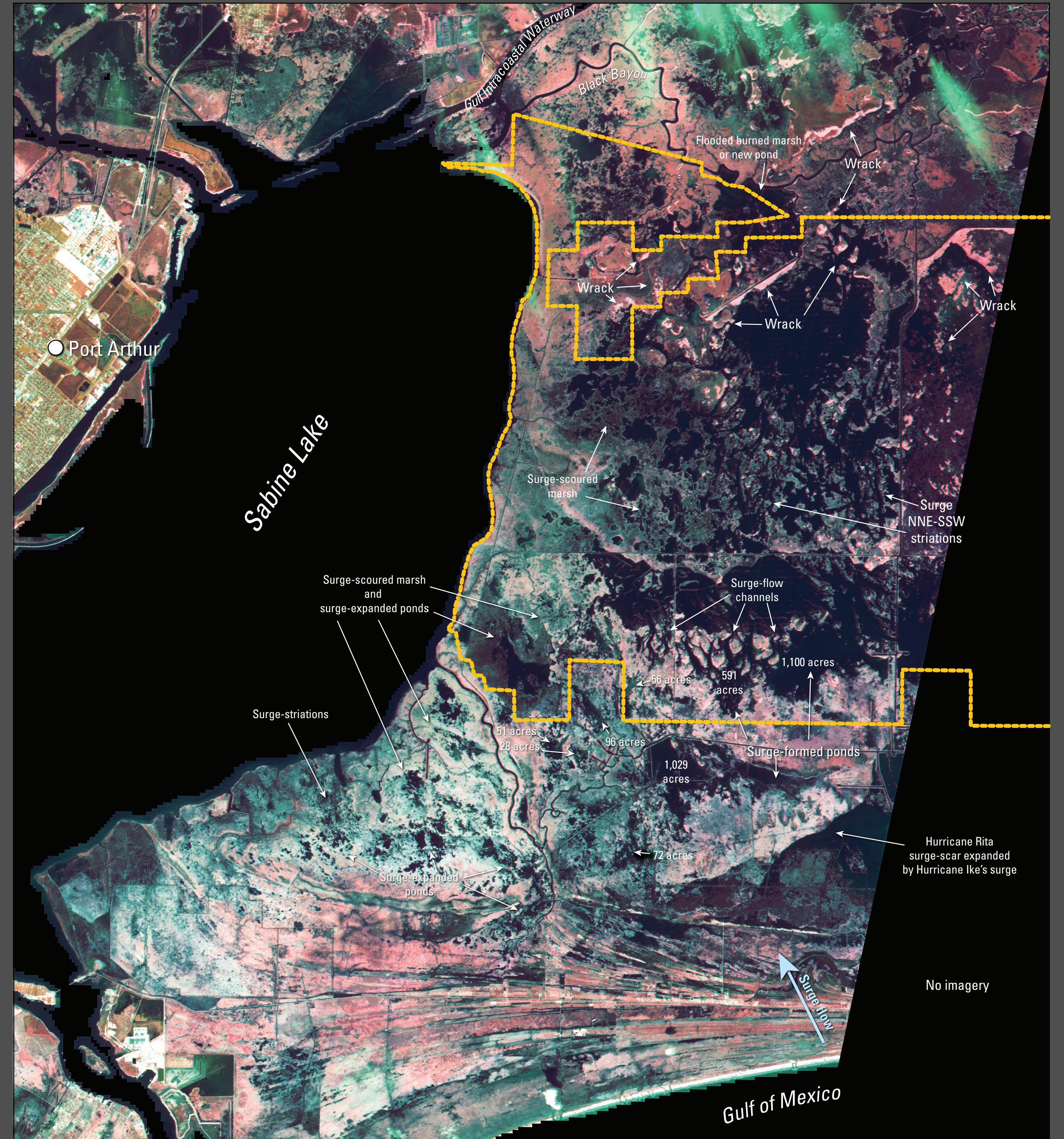
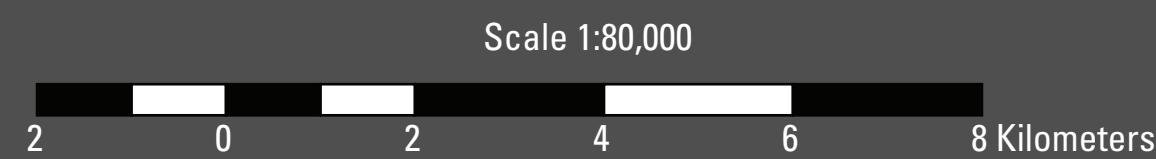
July 27, 2008 Landsat 5 TM

DRAFT DS XXX

Preliminary visual examination September 25, 2008.

U.S. Department of the Interior
U.S. Geological Survey

Contact: John Barras
barrasj@usgs.gov



September 24, 2008 SPOT 5

Vegetation damage from storm surge is indicated by a decrease in reflected near-infrared light by marsh vegetation as compared to the July 27, 2008 Landsat 5 TM image.

Landsat 5 Thematic Mapper Satellite Imagery is provided by the USGS EROS Data Center. SPOT 5 Satellite Imagery is provided by the SPOT Image Corporation for disaster relief. Bands 4 (near-ir), 3 (visible red), and 2 (visible green) are displayed.