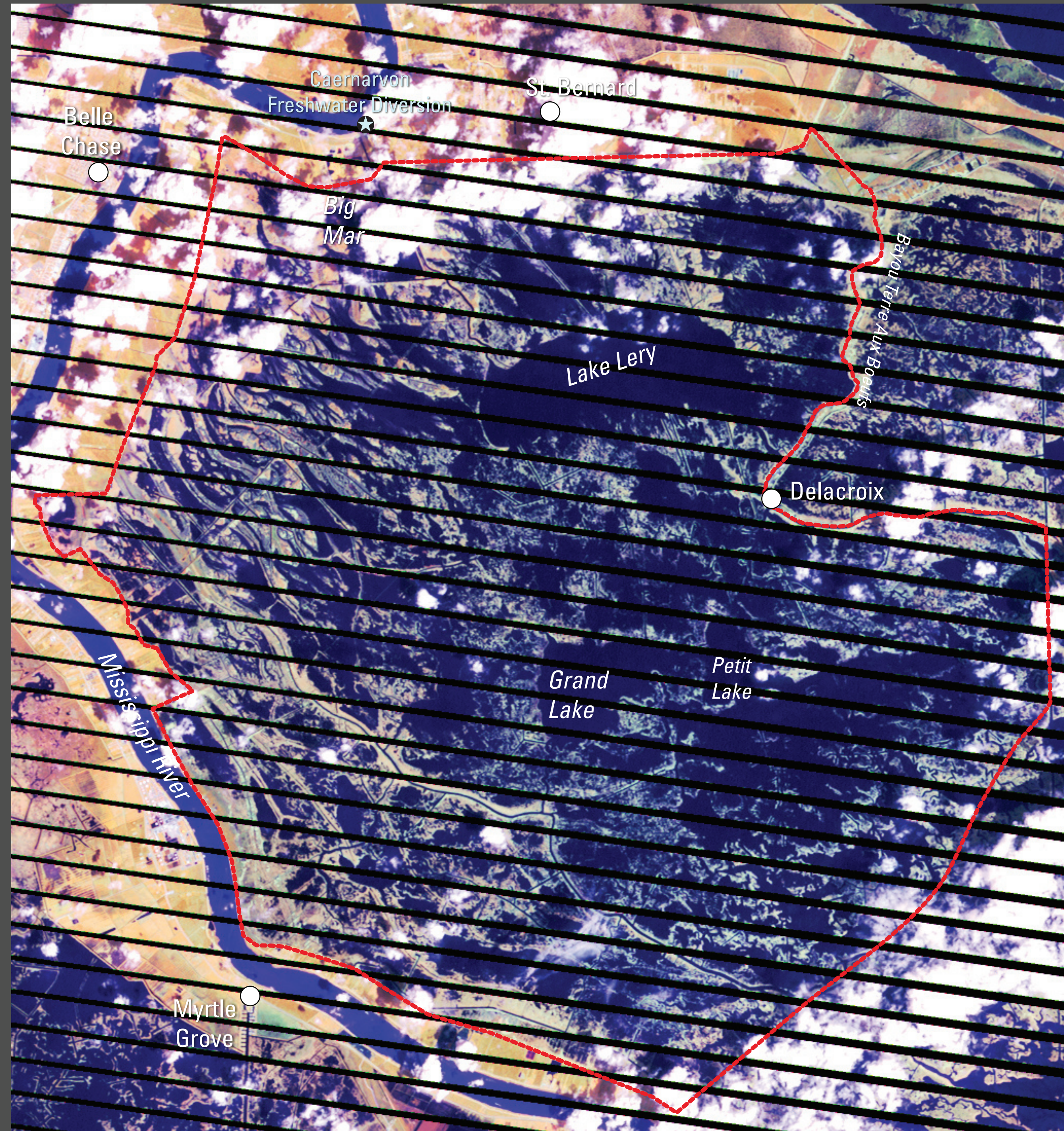


Before and After Hurricane Ike Images—Delacroix, Louisiana (Landsat Enhanced Thematic Mapper+ and Thematic Mapper Satellite Imagery)



September 7, 2008 Landsat 7 ETM+

The diagonal black lines crossing the image are caused by malfunction of Landsat 7's Scan Line Corrector (SLC-off).



October 1, 2008 Landsat 5 TM

Surge-removed floating and submerged aquatic vegetation zone. Both Hurricane Gustav's and Ike's cumulative surges appears to have removed significant amounts of aquatic and other transitory vegetation that characterized the area between the Delacroix and the Mississippi River after the surge impacts of Hurricanes Katrina and Rita in 2005. The blue cast of the October TM 5 image is caused by salt-burning of fresh and intermediate marsh vegetation from the combined surges.

DRAFT DS XXX

Preliminary visual examination October 1, 2008.

U.S. Department of the Interior
U.S. Geological Survey

Contact: John Barras
barrasj@usgs.gov



Scale 1:85,000



Image Sources:

Landsat TM and ETM+ satellite imagery is provided by the USGS EROS Data Center. Bands 4 (near-ir), 5 (mid-ir), and 3 (visible red) are displayed.